

CITY OF PICKERING LIBRARY WASHROOM RENOVATION

Interior Alterations to Second Floors

1 The Esplanade S
Pickering, ON
L1V 6K7

PHASE 2 - ISSUED FOR TENDER
FEBRUARY 24, 2026

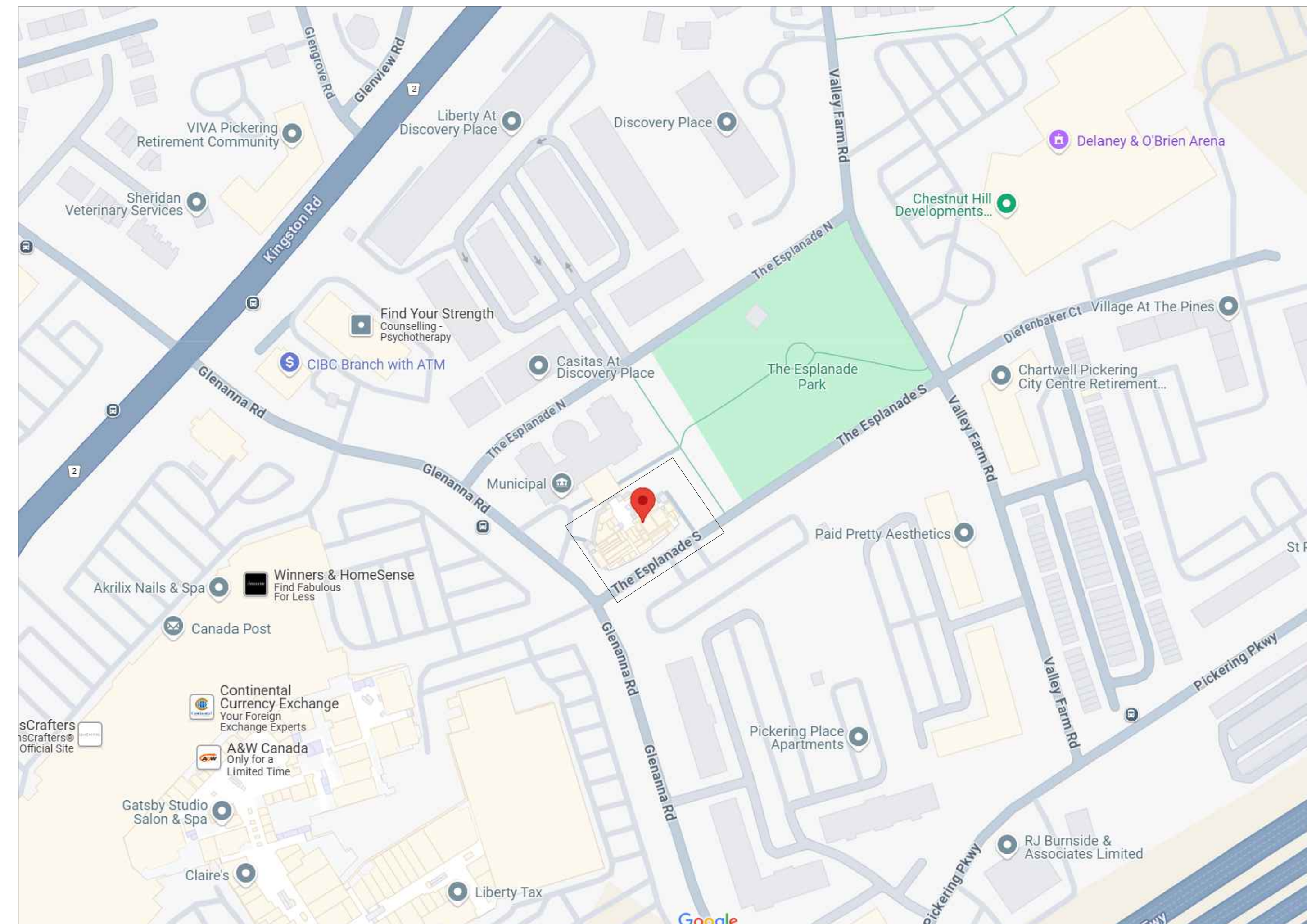
DRAWING INDEX	
ID00.00	DRAWING INDEX & LOCATION MAP
ID00.01	GENERAL NOTES
ID20.02	DEMOLITION PARTITION & RCP PLANS 2ND FLOOR
ID80.02	REFLECTED CEILING & POWER & COMMS PLANS 2ND FLOOR
ID81.02	WALL & FLOOR FINISHES PLANS 2ND FLOOR
ID82.00	INTERIOR ELEVATIONS, PLANS, AND SECTION DETAILS

CITY OF PICKERING
LIBRARY WASHROOM RENO
1 THE ESPLANADE S
PICKERING, ON
L1V 6K7
GR & 2ND FLOORS



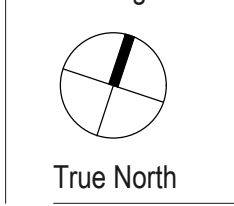
02	202204	ISSUED FOR TENDER
01	259403	ISSUED FOR CLIENT REVIEW
ISSUE	TYPMK02	DESCRIPTION

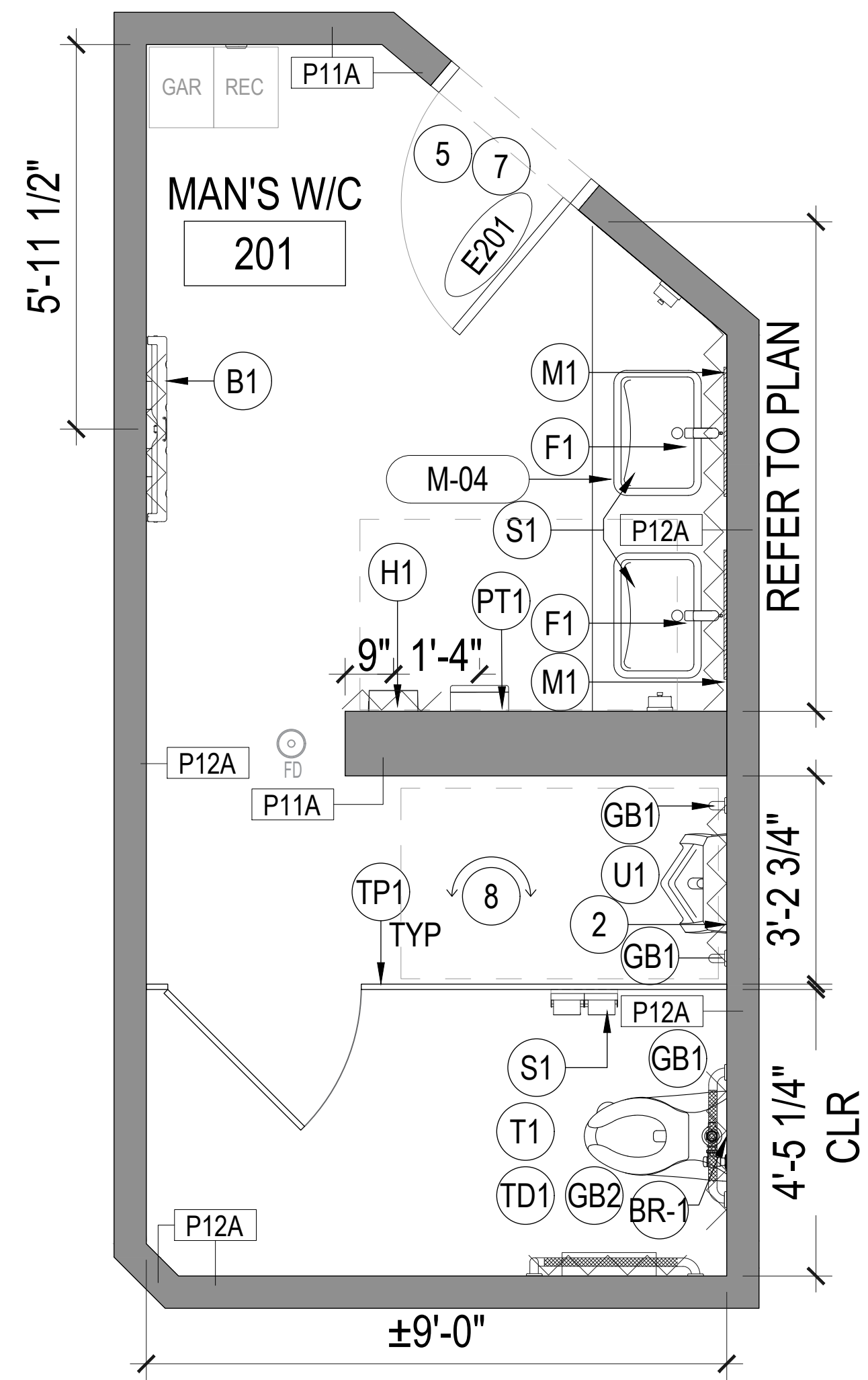
LOCATION MAP



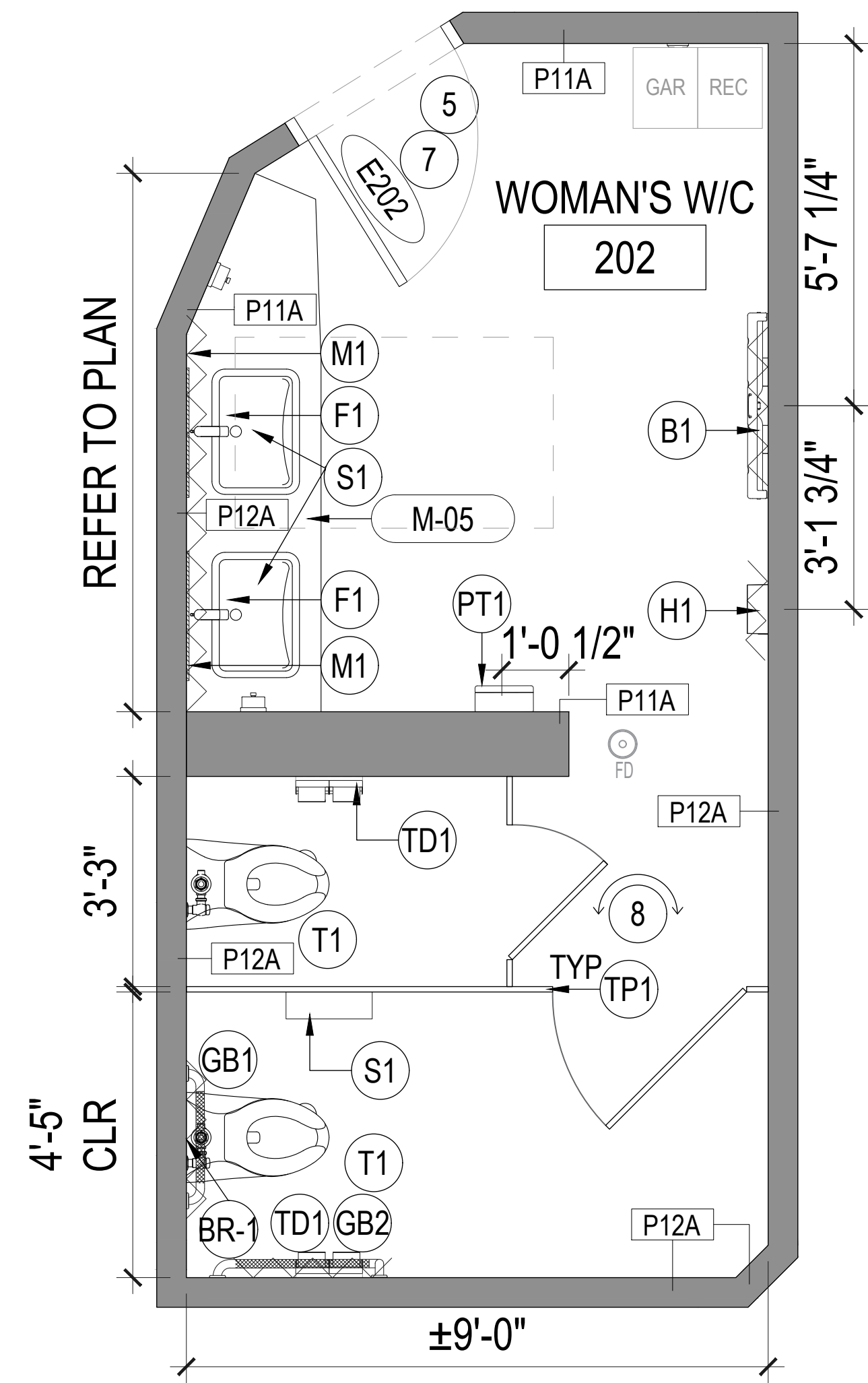
354 Davenport Road, Suite 200
Toronto, Ontario, Canada M5R 1K6
T: (416) 413-0063
email: info@instudiocreative.com

Client Name	CITY OF PICKERING
Project Name	LIBRARY WASHROOMS RENO
Project Address	1 THE ESPLANADE S PICKERING, ON
Project number	25022
Drawing Title	COVER
Drawing Scale	N.T.S.
Drawing Number	ID00.00

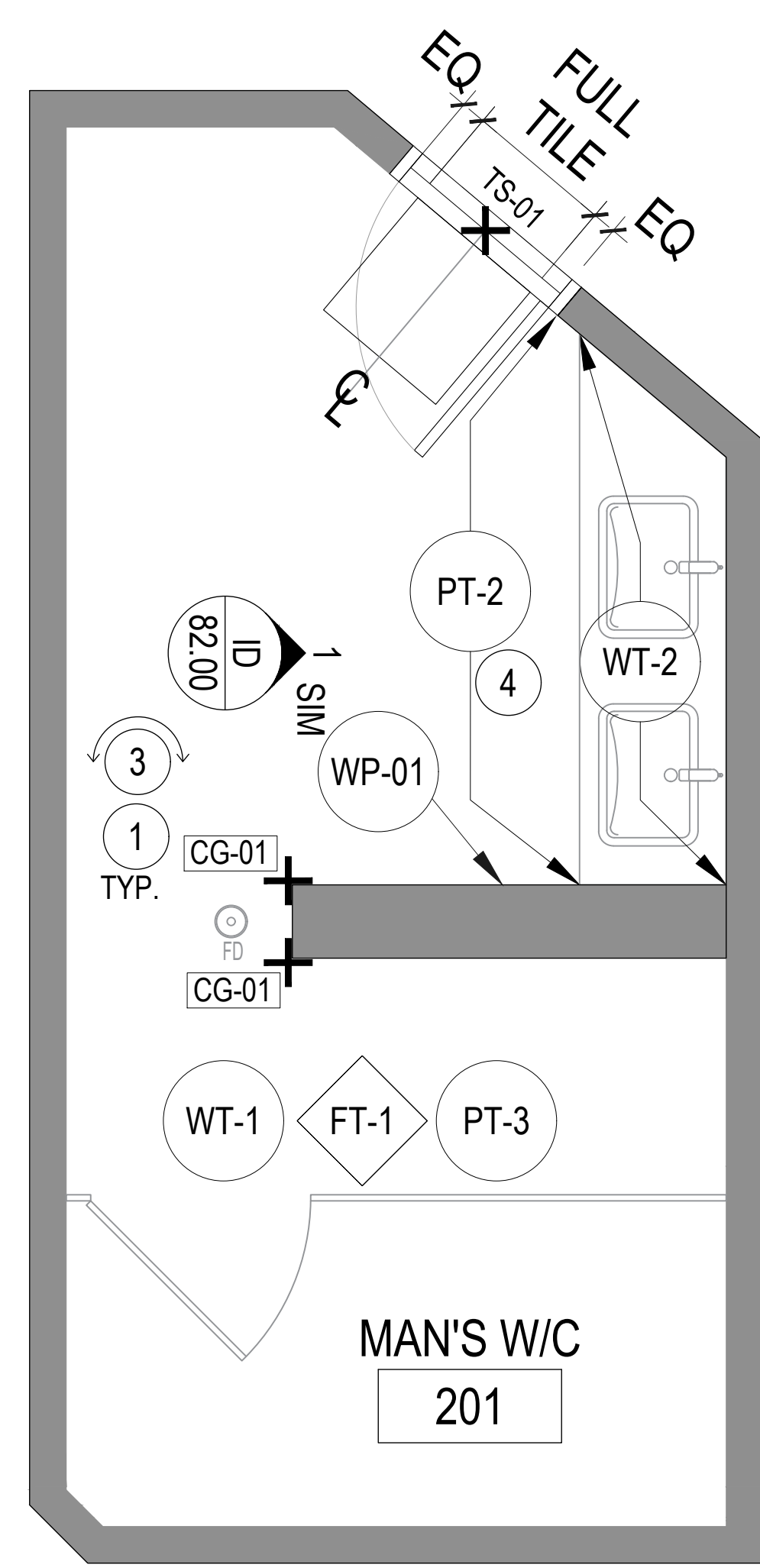




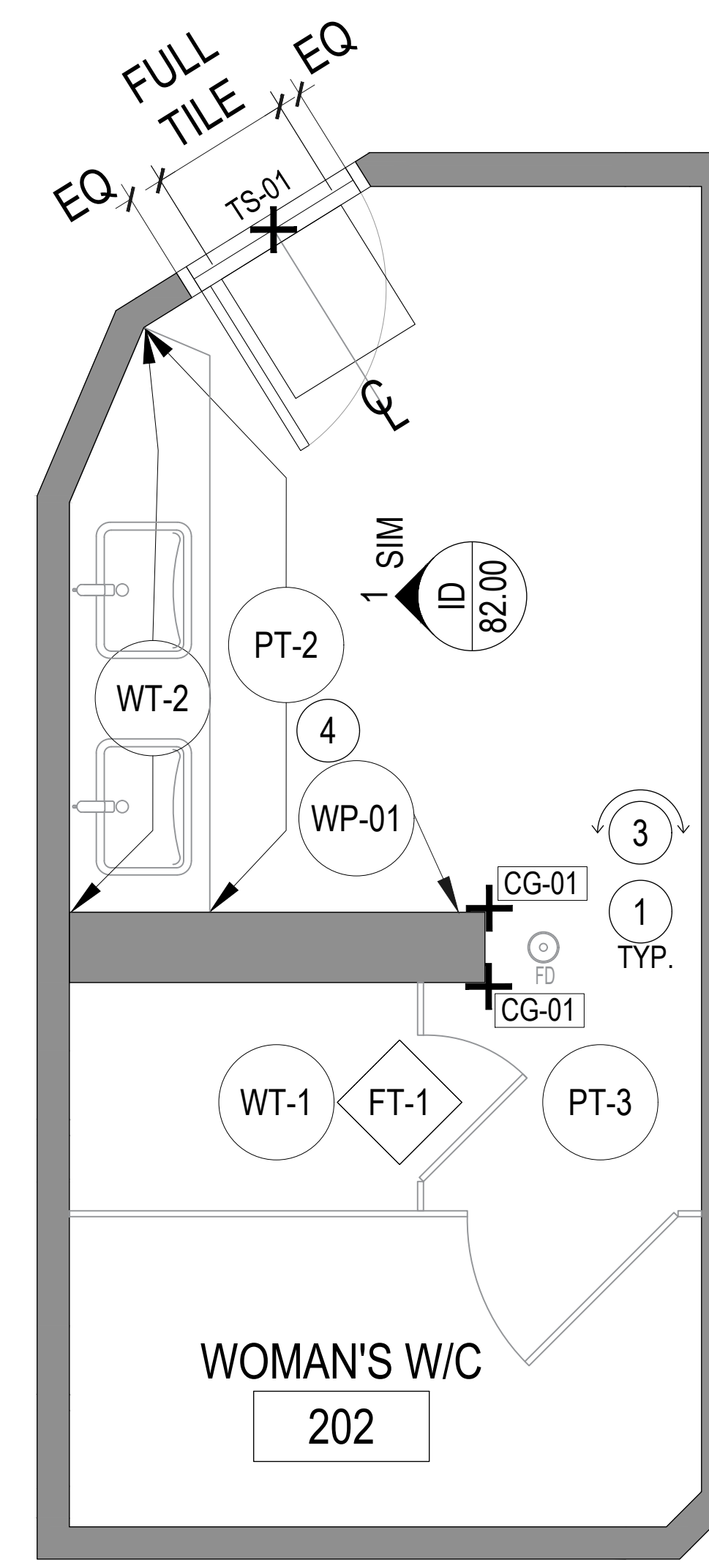
01 CONSTRUCTION PLAN MAN'S WASHROOM 2ND FL
SCALE: 1/2" = 1'-0"



02 CONSTRUCTION PLAN WOMAN'S WASH 2ND FL
SCALE: 1/2" = 1'-0"



03 WALL & FINISHES PLAN MAN'S WASH 2ND FL
SCALE: 1/2" = 1'-0"



04 WALL & FINISHES PLAN WOMAN'S WASH 2ND FL
SCALE: 1/2" = 1'-0"

LEGEND

GENERAL

- IDENTIFIED AREA BY CONTRACT
- EXISTING CONSTRUCTION TO REMAIN
- NEW FINISHES
- NEW GLASS PARTITION
- CONCRETE IN FLOOR BELOW
- LINE OF CONCRETE TOP PANELS UNLESS INDICATED OTHERWISE
- LOCATION FOR CONTIGUOUS FLOOR FINISHES TO BE MAINTAINED UNLESS NOTED
- ROOM NAME
- ROOM NUMBER
- DOOR NUMBER
- ALIGN WITH COORDINATED SURFACES
- SHEET NOTE
- SHEET NOTE APPLIES TO ENTIRE AREA
- DRAWING NUMBER TO SHEET
- SHEET NUMBER
- DESCRIPTION OF SIMILAR OR SIMILAR
- DETAIL NUMBER
- BASE FINISH SYMBOL
- DESCRIPTION OF SIMILAR OR SIMILAR
- AREA TO BE DETAIL
- REVISION REFERENCE
- IDENTIFIED TO EXIST
- IDENTIFIED TO BE RELOCATED
- IDENTIFIED AREA
- WALLON NUMBER, REFER TO WALLON SCHEDULE

FLOOR FINISHES

- SPECIAL FINISH
- FLOOR FINISH

WALL FINISHES

- SPECIAL FINISH
- WALL FINISH
- EXTENT OF FINISH
- WALL FINISH
- EXTENT OF FINISH
- WALL FINISH
- UNIFORMITY OF FINISH
- TRANSITION BETWEEN WALL PROTECTION FINISHES

PARTITION TYPES

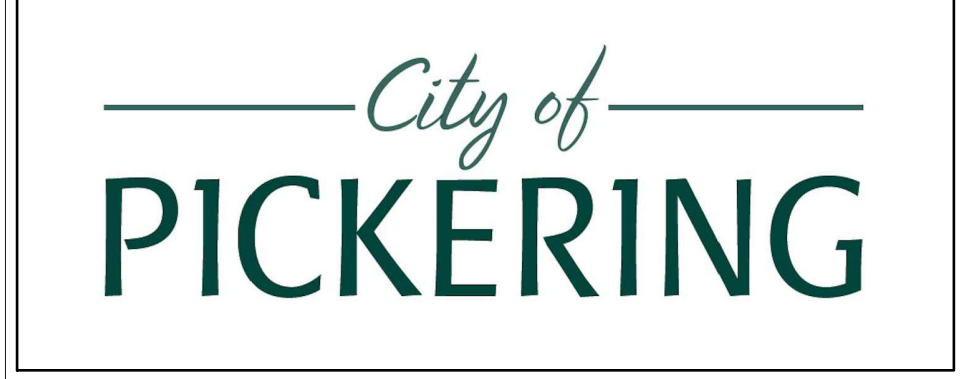
P12A PARTITION HEIGHT
PARTITION CONSTRUCTION

ISOLATION

- 1. 100% ISOLATION
- 2. 100% ISOLATION TO USE OF BLANK MESH
- 3. 100% ISOLATION TO USE OF PERFORATED MESH
- 4. 100% ISOLATION TO USE OF PERFORATED MESH WITH INSULATION BETWEEN
- 5. 100% ISOLATION TO USE OF PERFORATED MESH WITH INSULATION BETWEEN
- 6. 100% ISOLATION TO USE OF PERFORATED MESH WITH INSULATION BETWEEN
- 7. 100% ISOLATION TO USE OF PERFORATED MESH WITH INSULATION BETWEEN

STANDARD PARTITIONS	
TYPE	ASSEMBLY DETAIL
P11A	AS PER DETAILS
P12A	AS PER DETAILS

CITY OF PICKERING
LIBRARY WASHROOM RENO
1 THE ESPLANADE S
PICKERING, ON
L1V 6K7
GR & 2ND FLOORS



03	250304	ISSUED FOR TENDER
02	250403	ISSUED FOR CLIENT REVIEW
01	250314	ISSUED FOR CLIENT REVIEW
ISSUE	1	1/1/2025

PHASE 2

SHEET NOTES

- FLOOR FINISH TO SLOPE TOWARDS FLOOR DRAIN. COORDINATE WITH MECHANICAL DRAWINGS. PROVIDE NEW FLOOR DRAIN LID. REFER TO EQUIPMENT SCHEDULE FOR SPEC INFO.
- MAINTAIN ACCESS TO EXISTING ACCESS PANEL.
- EXISTING CONCRETE SLAB TO BE MADE GOOD AND LEVEL. READY TO RECEIVE NEW FINISH.
- PT-2 TO BE APPLIED TO BLANK FACE.
- DOORS AND FRAMES TO RECEIVE PAINT. REFER TO FINISHES SCHEDULE FOR INFORMATION.
- RESERVED.
- NEW KICK PLATE, D-PULL HARDWARE AND SIGNAGE. REFER TO DOOR SCHEDULE FOR DETAILS.
- PROVIDE BLOCKING AS REQUIRED FOR TOILET PARTITIONS. G.C TO ENSURE ADEQUATE SUPPORT IS PROVIDED TO TOILET PARTITIONS FOR STABILITY.

CONSTRUCTION PLAN NOTES

- CONTRACTOR TO MAKE GOOD ALL EXISTING PARTITIONS, COLUMNS AND PERIMETER WALLS TO RECEIVE NEW FINISHES.
- CONTRACTOR TO PROVIDE CEMENT PANELS FOR PARTITIONS TO RECEIVE TILE FINISH.
- ALL WORK IN THIS CONTRACT SHALL CONFORM TO THE REQUIREMENTS OF ALL EXISTING BY-LAWS, CODES, MUNICIPAL GOVERNMENTS & AUTHORITIES HAVING JURISDICTION OVER THE PROJECT. OBTAIN NECESSARY APPROVALS AND PERMITS PRIOR TO STARTING ANY WORK ON SITE.
- CONTRACTOR SHALL COMPLY WITH BASE BUILDING WORK PROCEDURES AND REGULATIONS. PROTECT ALL BASE BUILDING SYSTEMS & EQUIPMENT DURING CONSTRUCTION. THE CONTRACTOR IS RESPONSIBLE FOR THE REPAIRS OF ANY DAMAGES TO THE BASE BUILDING CAUSED BY CONTRACTOR AND/OR BY HIS/HER SUB-CONSTRUCTORS.
- CONTRACTOR SHALL BE RESPONSIBLE FOR PROVIDING CITY OF PICKERING WITH SET OF RECORD DRAWINGS UPON COMPLETION OF WORK.
- WHERE APPLICABLE, THE CONTRACTOR IS TO FOLLOW EACH PHASE AS INDICATED. ACCESS TO WASHROOMS, ELEVATORS, STAIRS, ETC. MUST REMAIN IN CONSTANT OPERATION.
- THIS DRAWING IS TO BE READ IN CONJUNCTION WITH MECHANICAL, ELECTRICAL, AND STRUCTURAL ENGINEERS DRAWINGS AND SPECIFICATIONS. REPORT ANY CONFLICTS BETWEEN CONSULTANTS DRAWINGS TO THE STUDIO FOR CLARIFICATION. ANY CONFLICTS, OMISSIONS OR DISCREPANCIES IN INTERIOR DESIGN DRAWINGS AND SPECIFICATIONS SHALL BE REPORTED TO THE STUDIO PRIOR TO ANY WORK PROCEEDING FOR CLARIFICATION AND INSTRUCTIONS.
- U.N.O. ON PLAN OR DETAIL DRAWING, ALL PARTITIONS ARE TO BE CENTERED ON CEILING GRID, CEILING TILE OR WINDOW MULLION. ALL PARTITIONS SHOWN IN LINE WITH ONE FACE OF BASE BUILDING WALL OR COLUMN SHALL BE CONSTRUCTED TO FINISH FLUSH AS ONE CONTINUOUS SURFACE. WHERE NEW PARTITIONS ABUT COLUMNS, RUN OVER PAINT FACE OF COLUMN. OBTAIN PARTITION CHALK LINE LAYOUT APPROVAL FROM IN STUDIO PRIOR TO ANY PARTITION ERECTIONS.
- REVIEW PLANS, ELEVATIONS AND DETAILS FOR MILLWORK. ENSURE ADEQUATE BLOCKING, AND/OR CONCEALED STEEL ANGLED SUPPORT IS PROVIDED WITHIN PARTITIONS AND CEILINGS AS REQUIRED.
- CONTRACTOR TO PROVIDE ALL NECESSARY FASTENING, ANCHORS, BRACKET, ACCESSORIES AND SUPPORTS REQUIRED FOR FABRICATION OF THE WORK.
- CHECK & VERIFY FLOOR LEVEL PRIOR TO ANY PARTITION LAYOUT. PROVIDE SIM COAT ON FLOOR IF NECESSARY.
- ALL NEW AND EXISTING GWB PARTITIONS TO BE FILLED, TAPED, SANDED AND PRIMED TO RECEIVE FINISHES AS INDICATED ON FINISHES PLAN.
- CONTRACTOR IS TO SUBMIT SHOP DRAWINGS FOR ALL MILLWORK ITEMS AND OTHER FABRICATED ITEMS FOR DESIGNER'S APPROVAL PRIOR TO WORK.
- INSTALL DOOR OPENING AT 30mm FROM ADJACENT PERPENDICULAR PARTITION.
- PROVIDE ADEQUATE BLOCKING IN PARTITIONS AND CEILINGS WHERE APPARENT LOADS IS PRESENT. (IE: MILLWORK ITEMS OR OTHER WALL HUNG ITEMS) PROVIDE ANY VERTICAL OR HORIZONTAL BLOCKING FOR SEPARABLE AS REQUIRED. REFER TO D10.01 FOR TYPICAL BLOCKING DETAILS.
- WHERE CONTINUOUS PIPING PENETRATES A PARTITION, IT IS TO BE SLEEVED AND SEALED. ONE LAYER OF 16 GA. SHEET METAL WITH 40 MM BATT INSULATION TO BE INSTALLED PENETRATES A PARTITION AT THE CONNECTOR CABINETS. IT IS TO BE SLEEVED INSIDE THE RADIATOR AT THE PARTITION LOCATION TO COMPLETE THE ACOUSTIC SEPARATION.
- CONTRACTOR TO ENSURE QUALITY TRANSITION FROM PARTITION BASE FINISH TO CONNECTOR.
- CONTRACTOR TO MAKE GOOD OF ANY DAMAGE/PLAUS TO THE CONNECTOR COVER PLATE & BASE.
- CONTRACTOR TO REPAIR ANY DAMAGED FIREPROOFING TO EXISTING STRUCTURE DUE TO NEW CONSTRUCTION.

WALL FINISHES

- ALL PARTITIONS TO BE PAINTED PT-03 UNLESS OTHERWISE NOTED.
- REFER TO CORRESPONDING ELEVATIONS FOR EXTENT OF ALL WALL TILE APPLICATIONS.
- PROVIDE TILE FINISHING EDGE PROTECTION TS-01 IN ALL AREAS WHERE EDGE OF WALL TILE WILL BE EXPOSED. REFER TO MATERIAL SCHEDULE FOR SPEC.
- REFER TO DOOR SCHEDULE AND MATERIAL & FINISHES SCHEDULE FOR DOOR FINISHES.
- REFER TO MATERIALS SCHEDULE FOR FINISHES DETAILS.

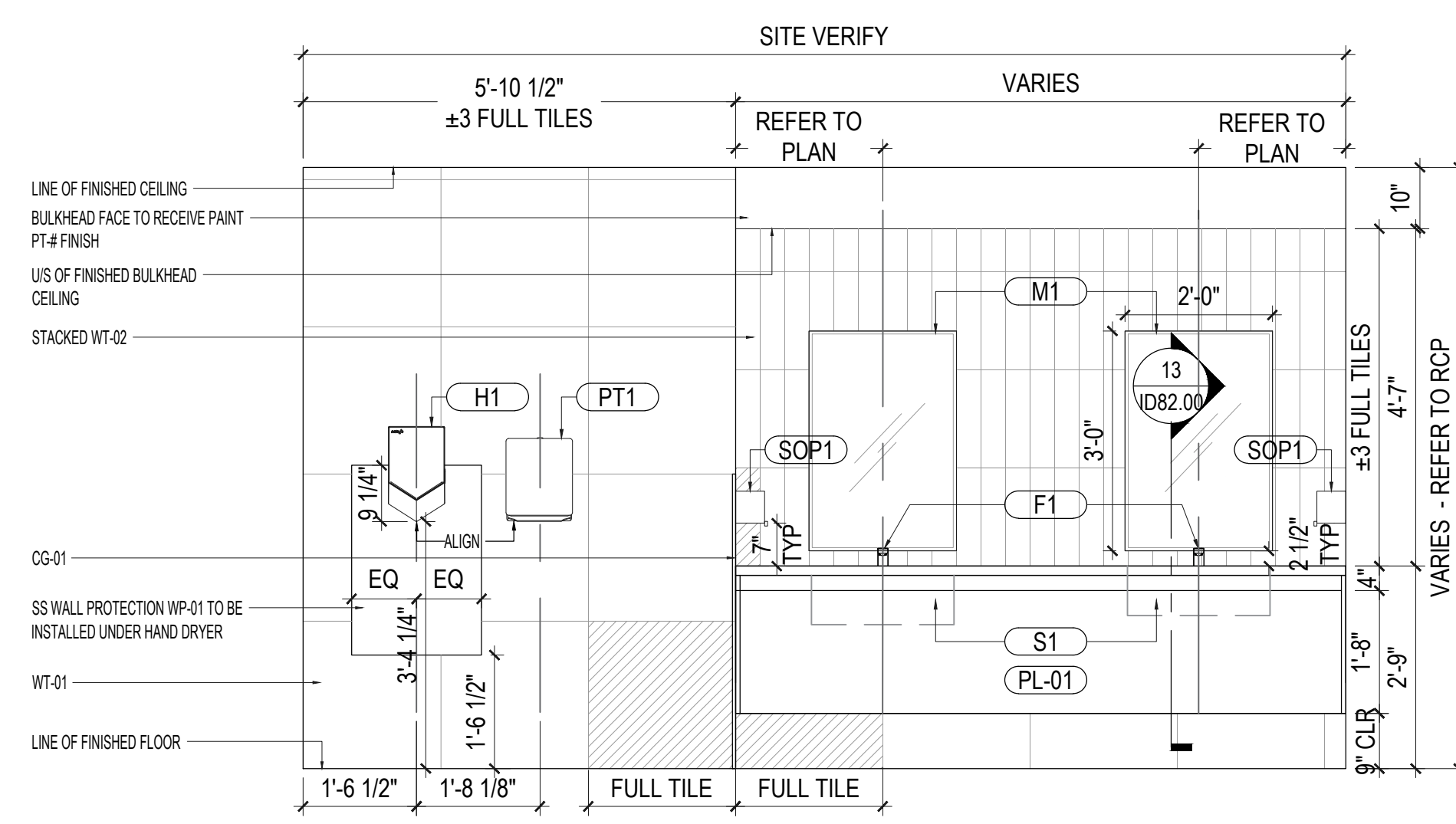
FLOOR FINISHES

- REFER TO 03.01 FOR WEAR, ABBREVIATIONS AND MOUNTING HEIGHTS.
- ENSURE SURFACES TO RECEIVE FINISHES ARE CLEAN, TRUE AND FREE OF IRREGULARITIES. DO NOT PROCEED WITH WORK UNTIL UNSATISFACTORY CONDITIONS HAVE BEEN CORRECTED.
- FEATHER FLOORING AND/OR BUILD UP OF SLAB DEPRESSION AS REQUIRED TO PROVIDE A SMOOTH TRANSITION TO SLIT CHANGE IN FLOOR THICKNESS THROUGHOUT. REPAIR EXISTING SURFACES FOR APPLICATION OF NEW FINISHES.
- REFER TO MATERIALS SCHEDULE FOR ALL TRANSITION TYPES AND DETAILS. SEE PROJECT MANUAL FOR FINISH SCHEDULE.
- REFER TO WALL FINISHES PLANS FOR BASE SPECIFICATIONS.
- ALL FLOORING TO BE FT-01, U.N.O.
- LEGEND IS FOR GRAPHICAL PROPOSES ONLY AND SHOULD NOT BE VIEWED AS ACTUAL PATTERN.
- ALL FLOOR FINISH CHANGES OCCUR AT CENTERLINE OF DOOR FRAME, U.N.O.
- FLOOR FINISHES TO CONTINUE BELOW ALL EQUIPMENTS, U.N.O.
- PROVIDE FLOOR TRANSITIONS.
- PROVIDE ALLOWANCE FOR FLOOR FLATTENING FOR 10% OF THE FLOOR AREA.

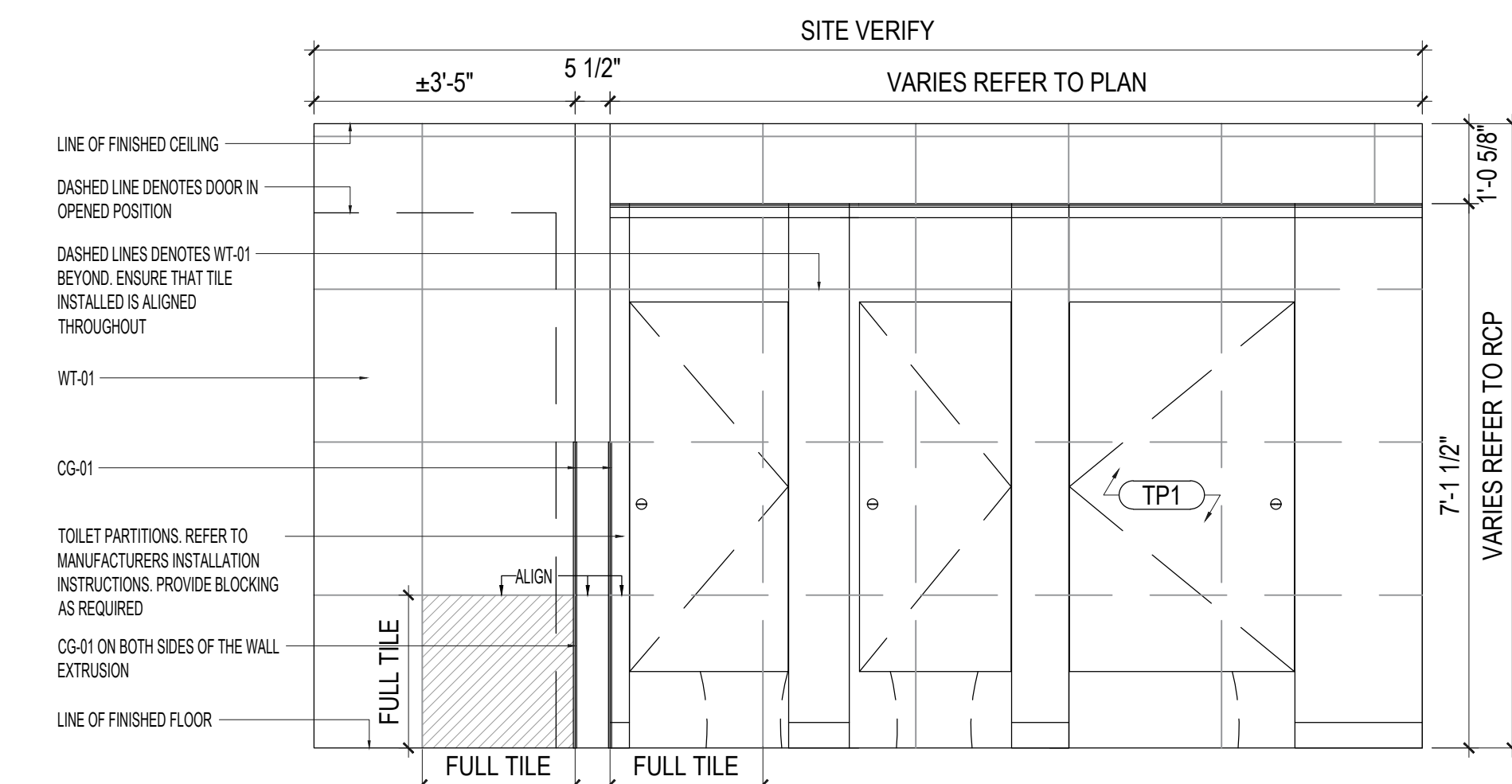


354 Davenport Road, Suite 200
Toronto, Ontario, Canada M5R 1K6
T: (416) 413-0063
email: info@instudiocreative.com

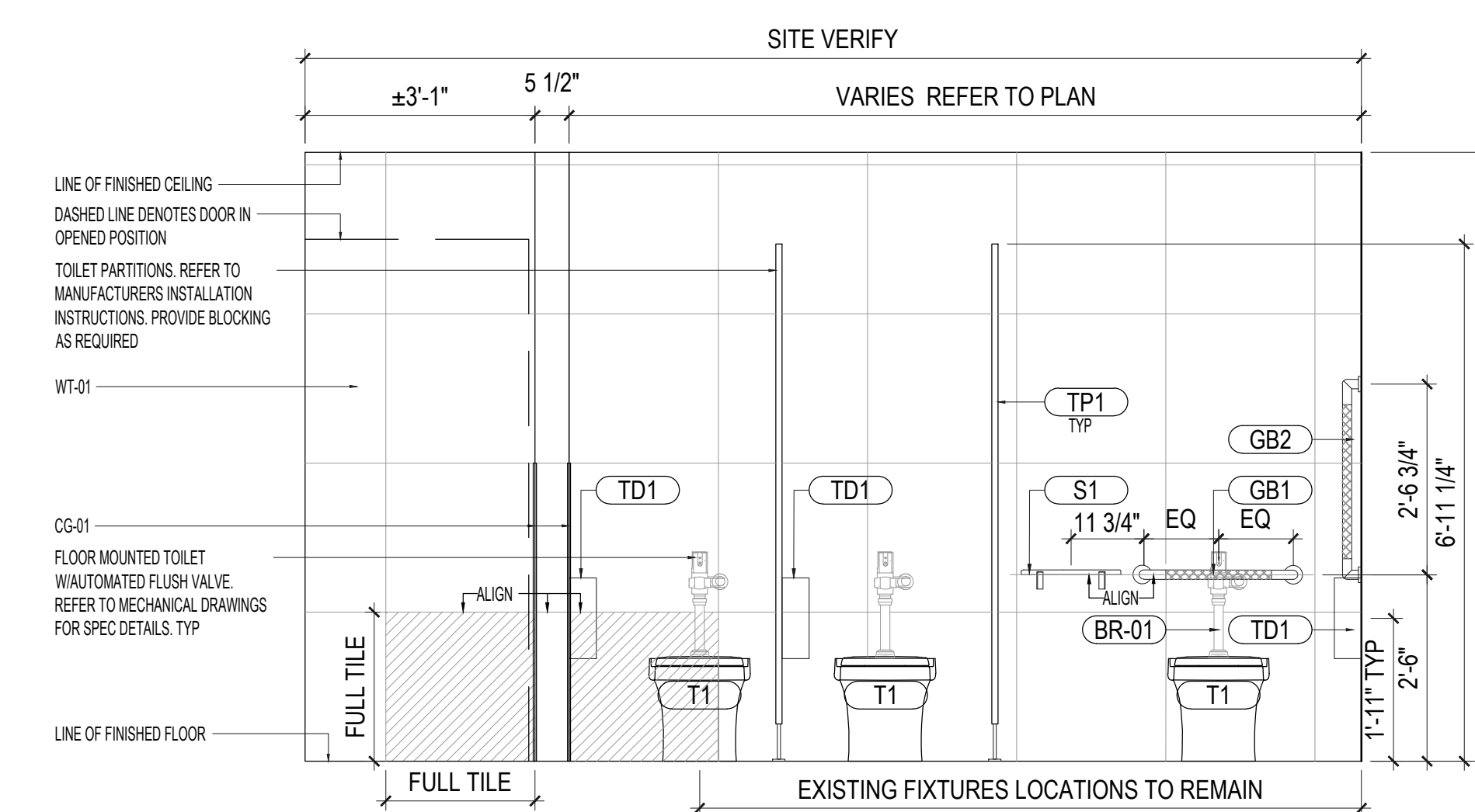
Client Name	CITY OF PICKERING
Project Name	LIBRARY WASHROOMS RENO
Project Address	1 THE ESPLANADE S PICKERING, ON
Project number	25022
Drawing Title	CONSTRUCTION, WALL, & FLOOR FINISHES PLANS 2ND FLOOR
Drawing Scale	1/8" = 1'-0"
Drawing Number	ID 81.02



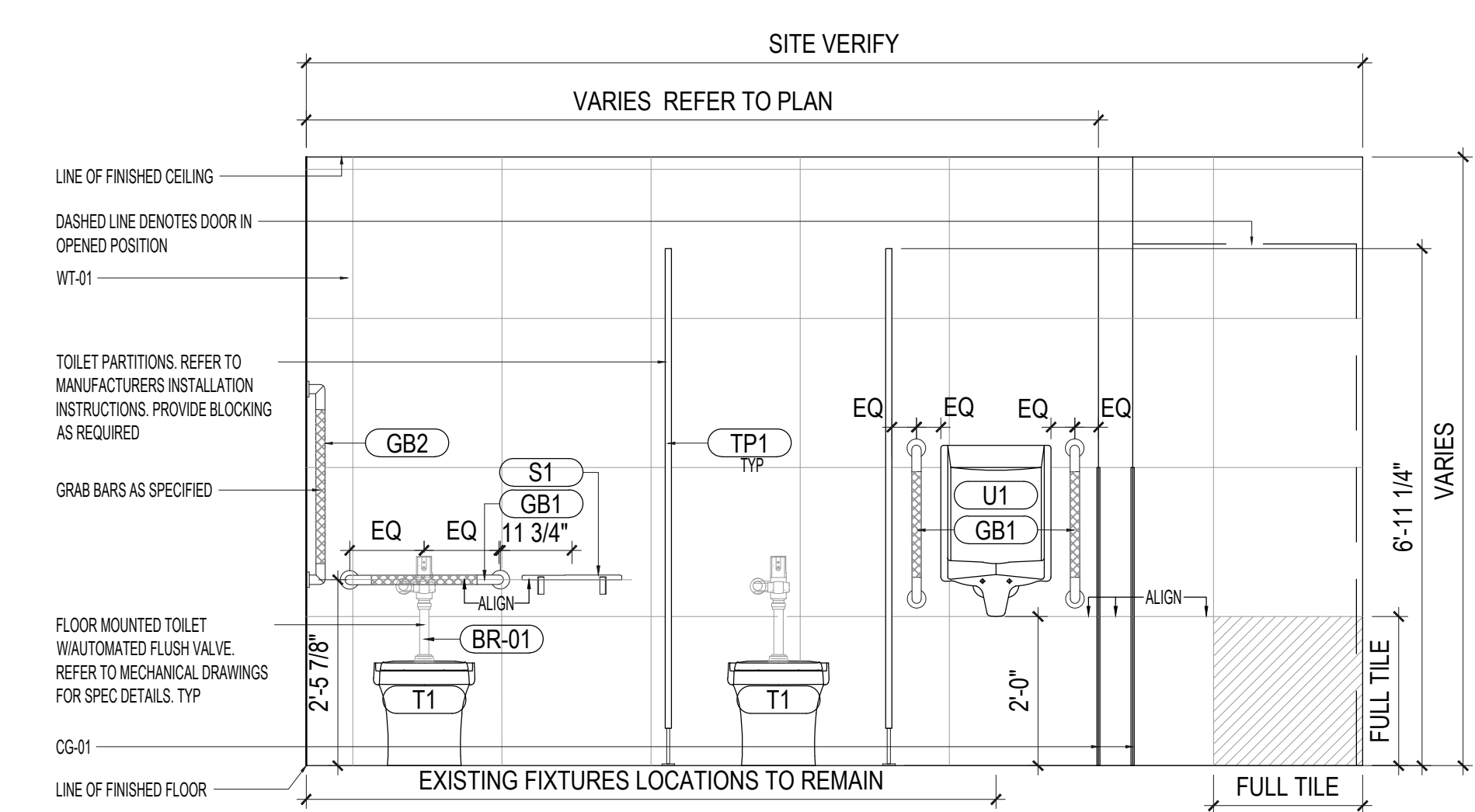
04 TYPICAL VANITY WASHROOM ELEVATION
SCALE: 1/2" = 1'-0"



03 TYPICAL TOILET PARTITION FRONTS
SCALE: 1/2" = 1'-0"



02 TYPICAL WOMAN'S WASHROOM ELEVATION
SCALE: 1/2" = 1'-0"



01 TYPICAL MAN'S WASHROOM ELEVATION
SCALE: 1/2" = 1'-0"

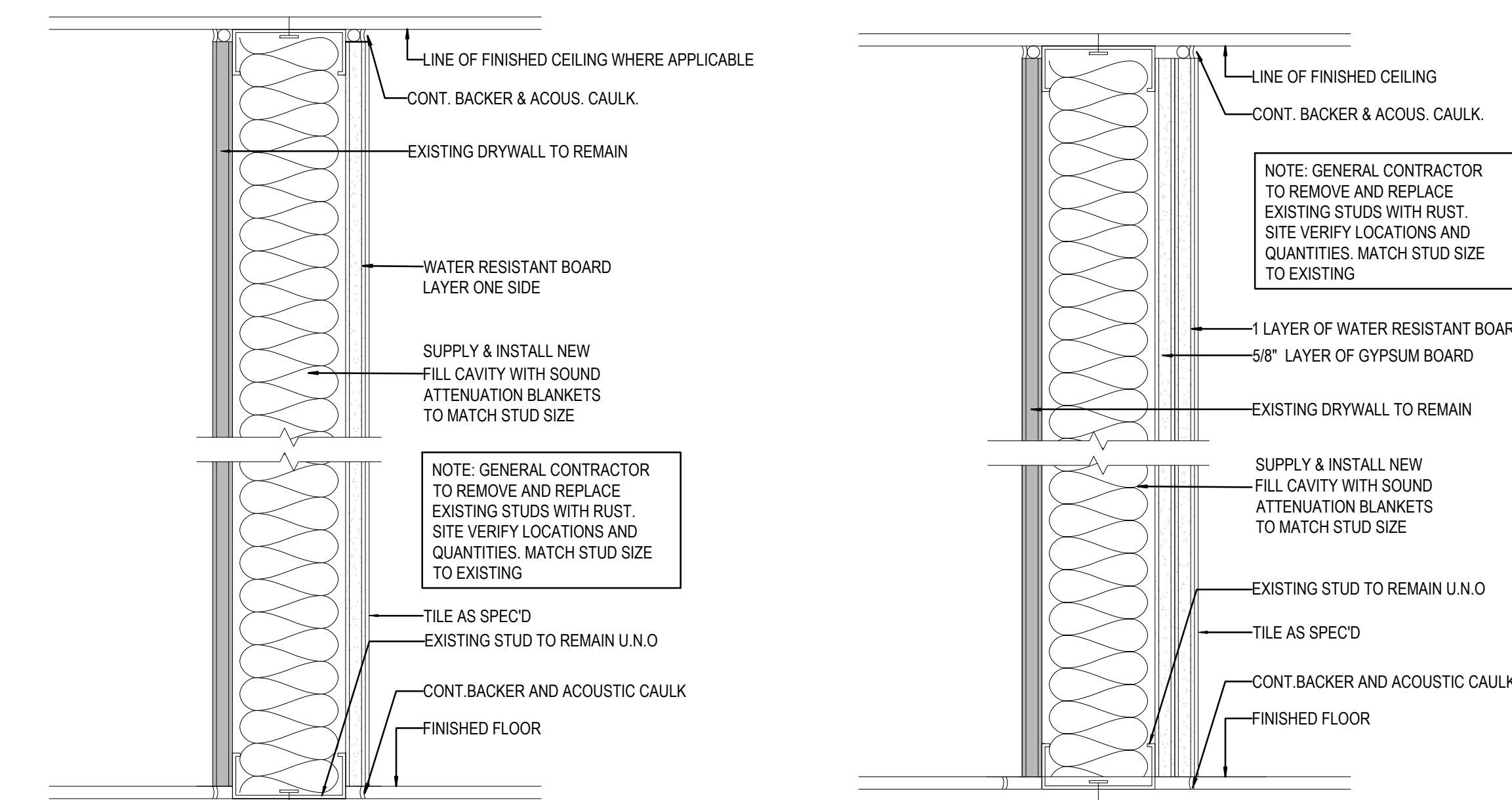
08 RESERVED
SCALE:

09 RESERVED
SCALE:

07 RESERVED
SCALE:

06 RESERVED
SCALE:

05 RESERVED
SCALE:

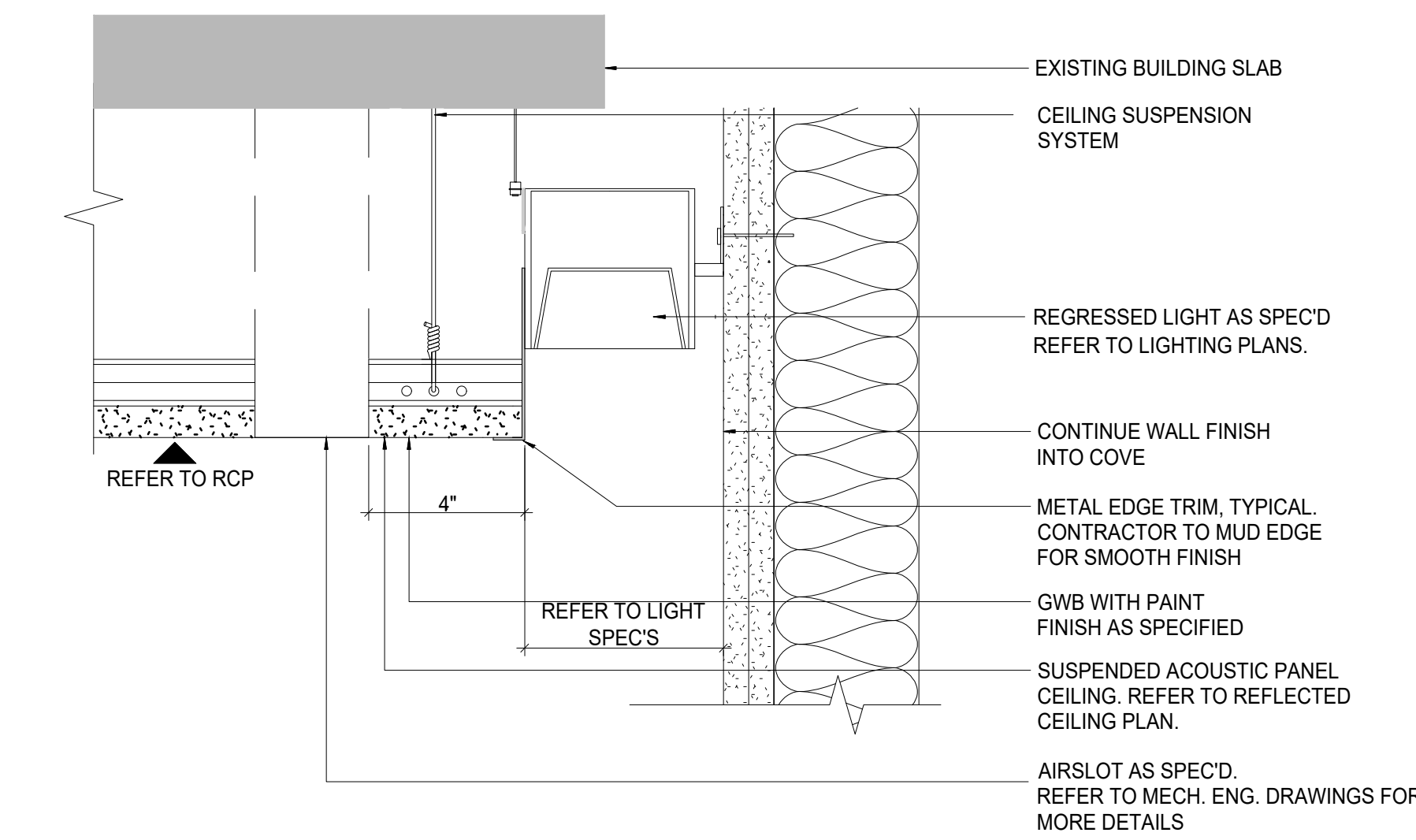


15 PARTITION DETAIL - P11A
SCALE: 3" = 1'-0"

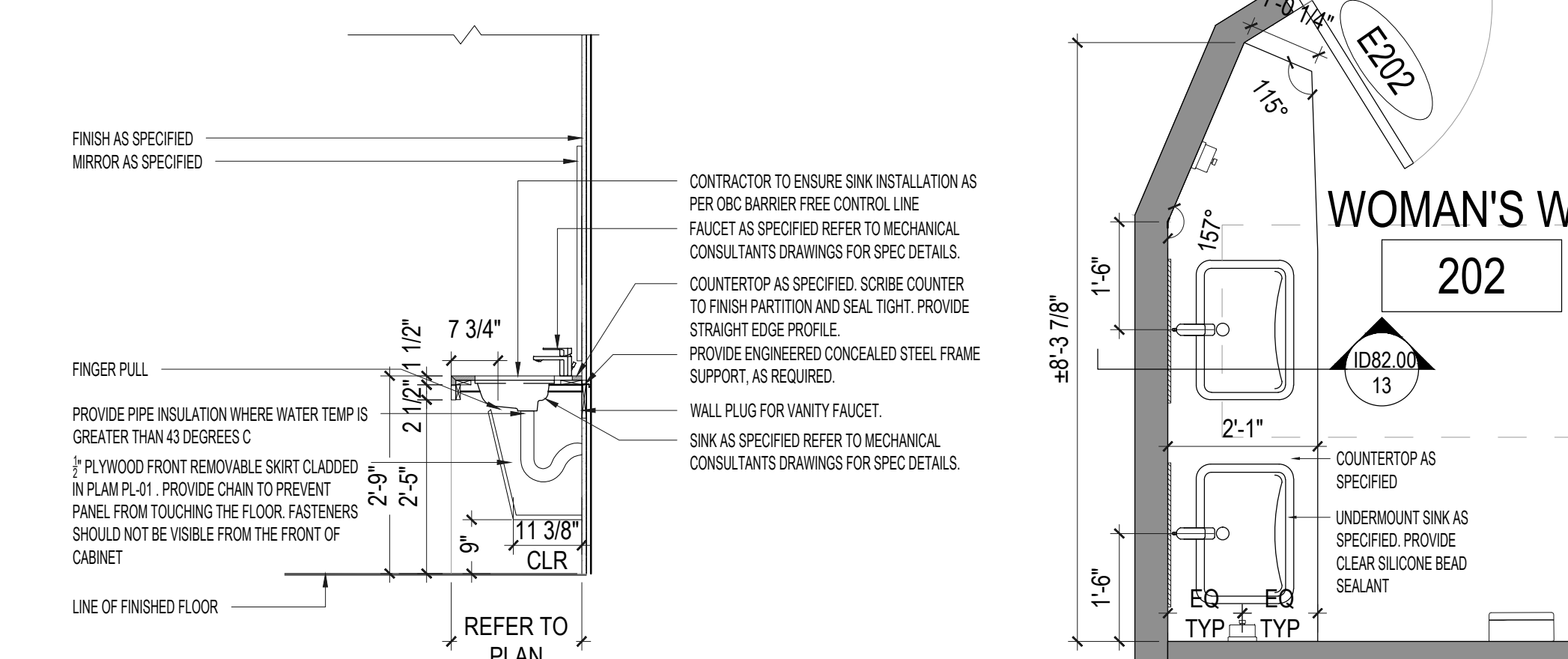
16 PARTITION DETAIL - P12A
SCALE: 3" = 1'-0"

WALL TYPE	SIZE	GA.	SPAC'G	GYP. BD.	WALL THICK.	REMARKS
P11A	EX	EX	EX	16MM [5/8"] - ONE SIDE		STC45 BATT INSULATION

WALL TYPE	SIZE	GA.	SPAC'G	GYP. BD.	WALL THICK.	REMARKS
P12A	EX	EX	EX	16MM [5/8"] - ONE SIDE		STC45 BATT INSULATION

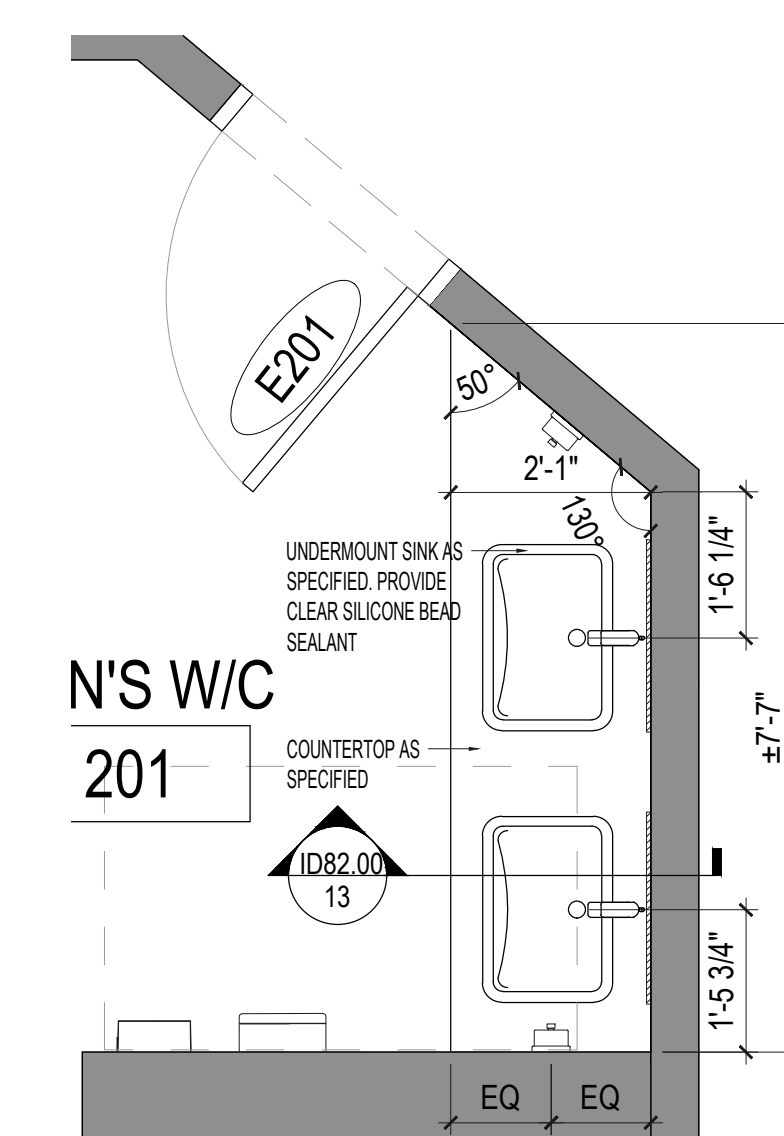


14 TYPICAL COVE LIGHTING DETAIL AT WASHROOMS
SCALE: N.T.S



13 TYP. VANITY SECTION
SCALE: 1/2" = 1'-0"

12 M5 VANITY PLAN 202
SCALE: 1/2" = 1'-0"



11 M4 VANITY PLAN 201
SCALE: 1/2" = 1'-0"