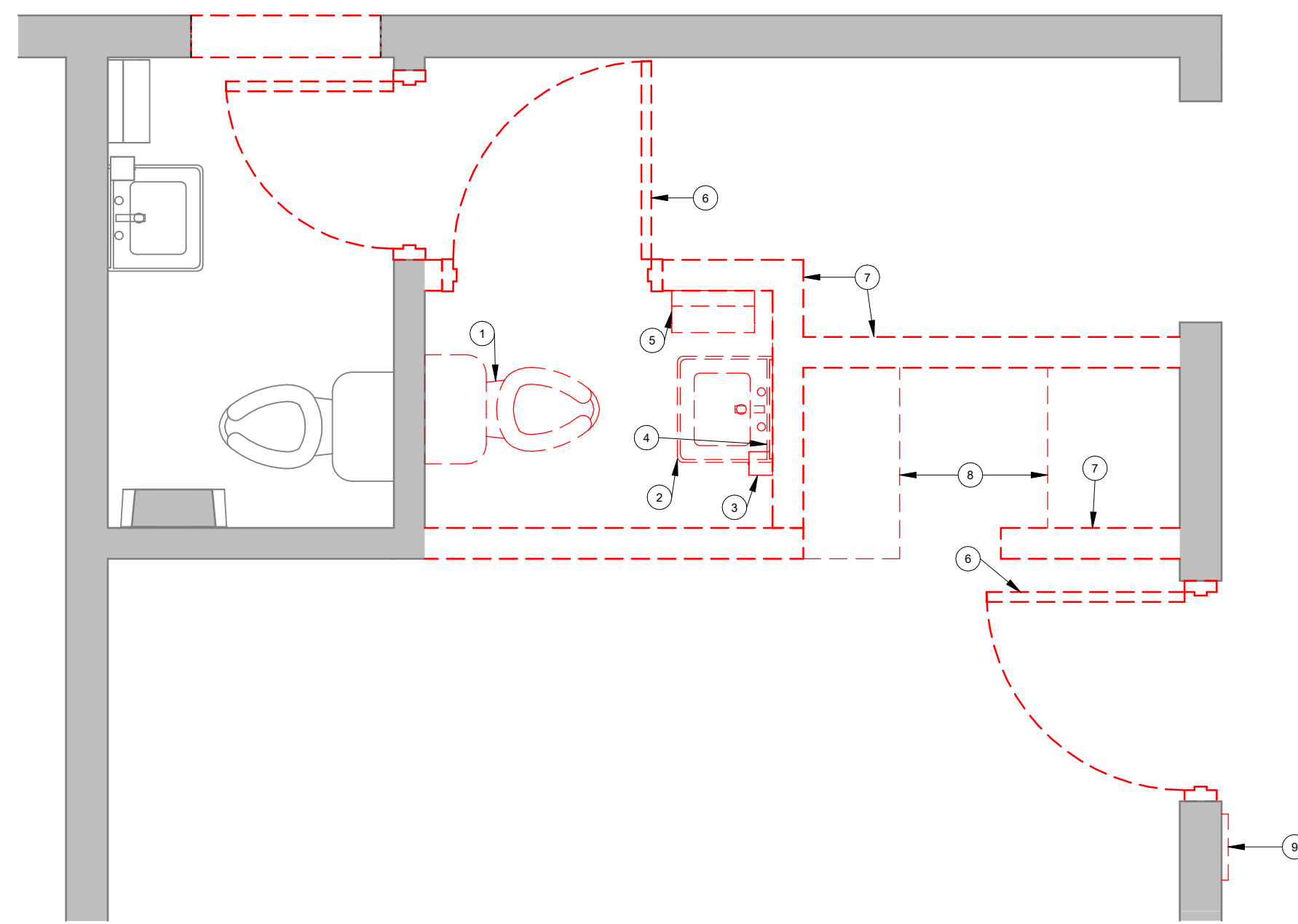
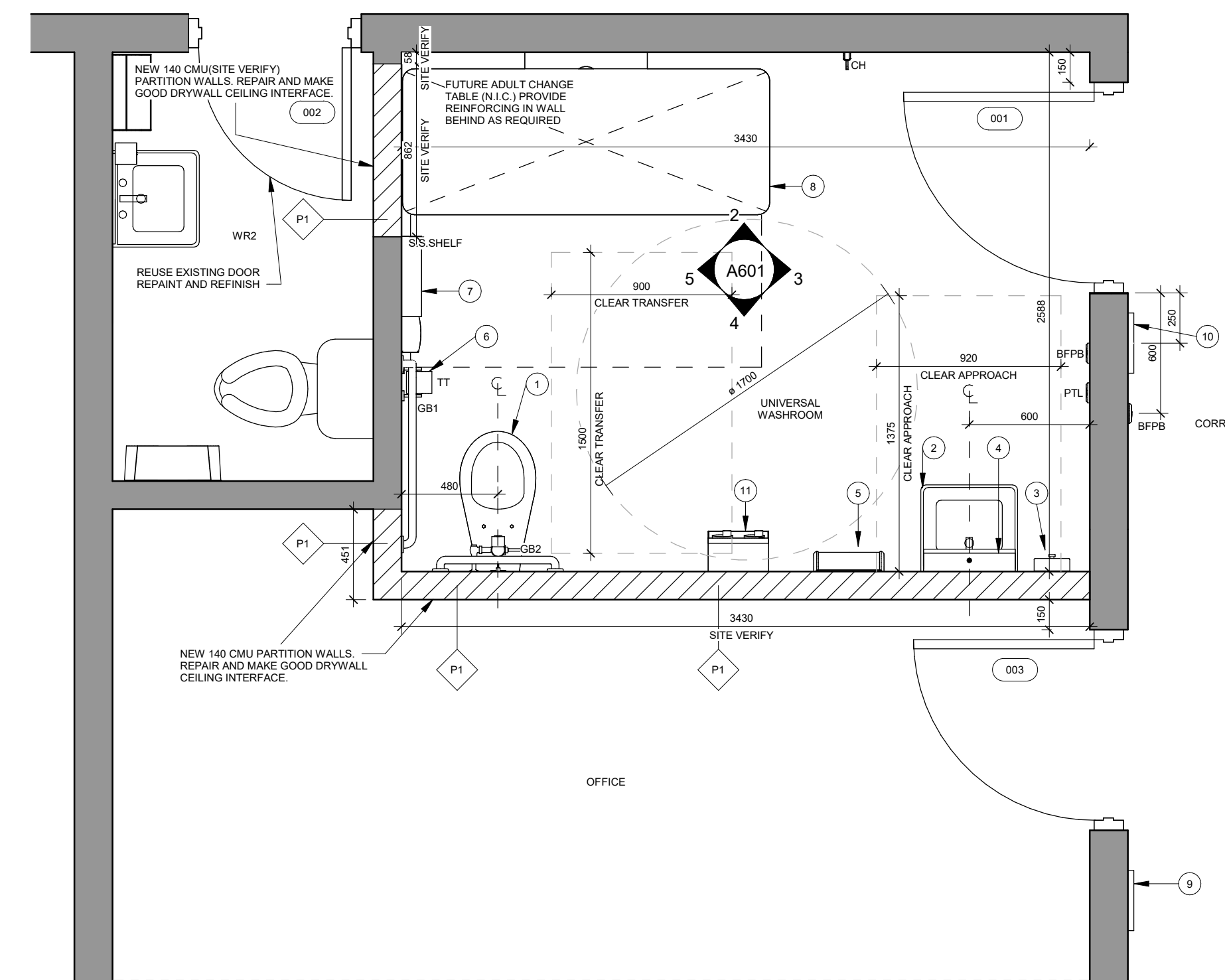


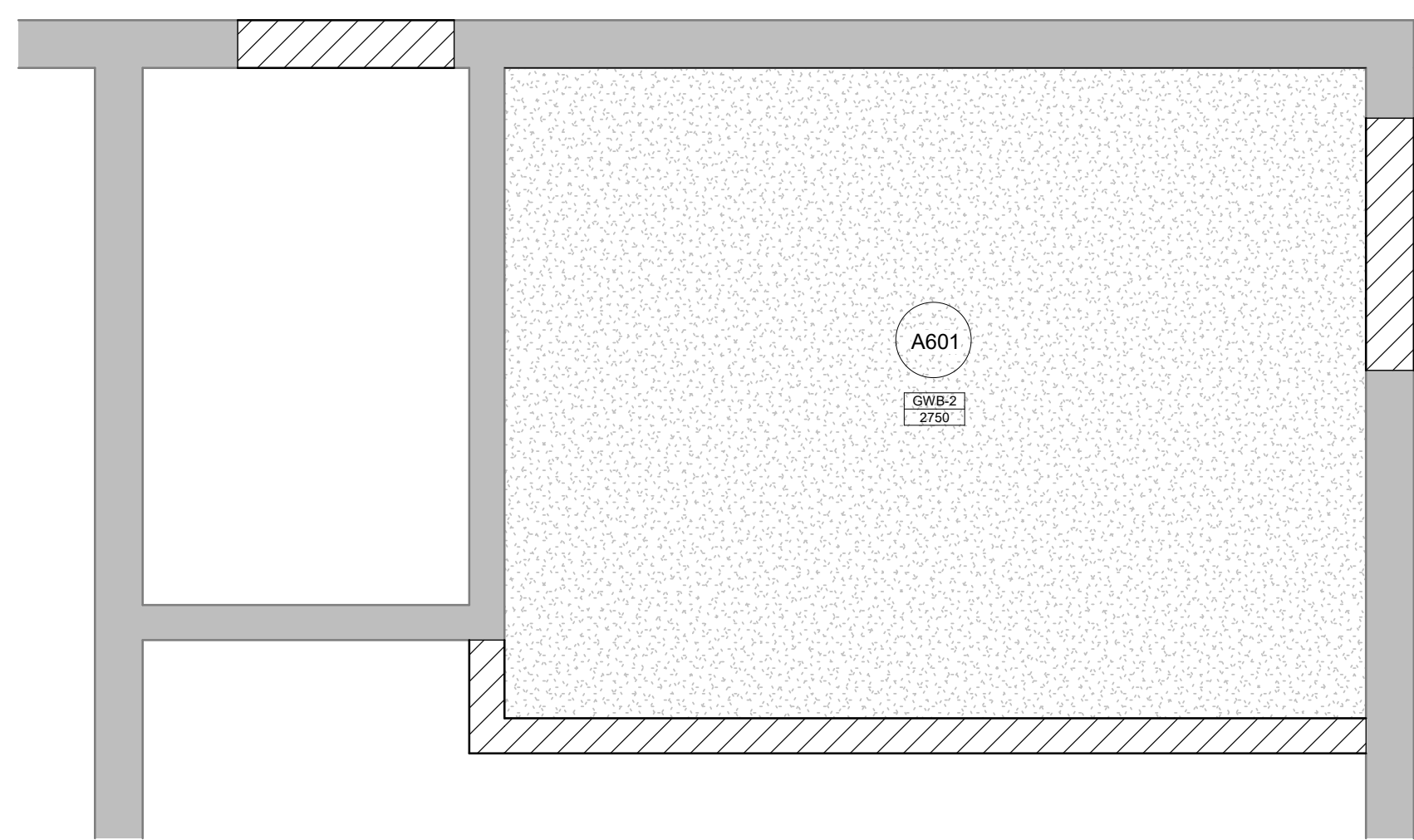
1 Level 1 Floor Plan - Existing
A202 1 : 25



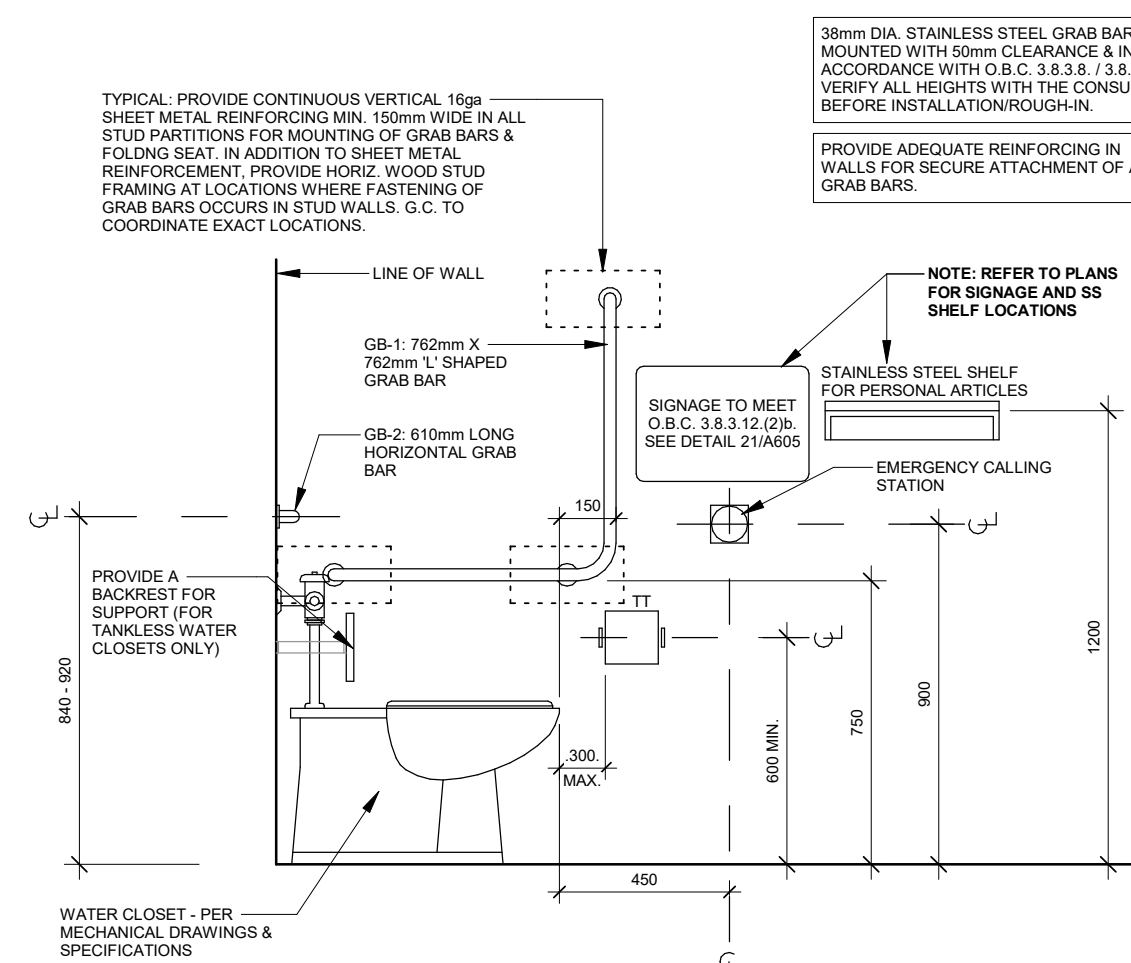
2 Universal Washroom - Demolition
A202 1 : 25



3 Universal Washroom - Alteration
A202 1 : 25



4 Universal Washroom
A202 1 : 25



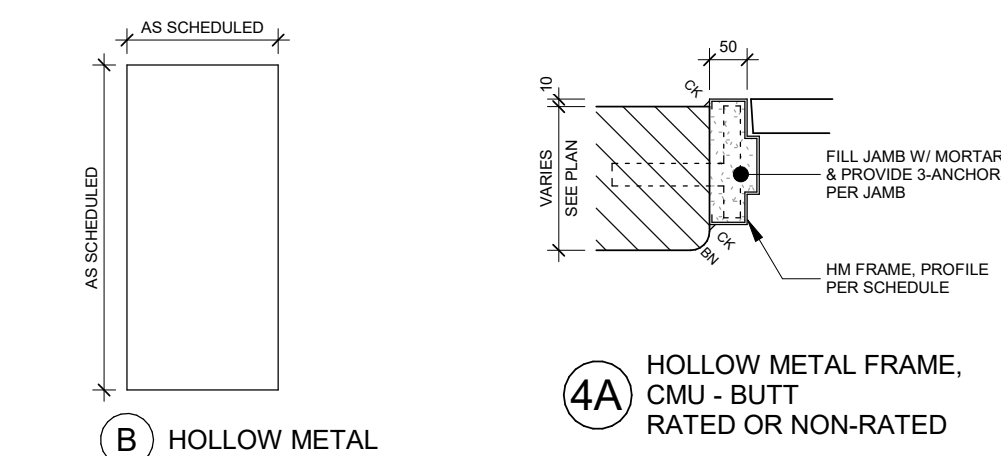
5 BF GRAB BAR DETAIL
A202 1 : 20

IN THE EVENT OF AN EMERGENCY PUSH EMERGENCY BUTTON AND AUDIBLE AND VISUAL SIGNAL WILL ACTIVATE

- WALL SIGN GENERAL NOTES:
- ALL TEXT SHALL BE TITLESIA SIGN FONT, CENTERED VERTICALLY AND HORIZONTALLY ON SIGN.
 - ALL TEXT SHALL BE RED IN COLOUR AND 25mm HIGH.
 - SIGN BODY SHALL BE WHITE RIGID PVC OR ACRYLIC AND ADHERED TO WALL WITH DOUBLE SIDED TAPE AND SILICONE ADHESIVE.
 - SIGN SHALL BE DESIGNED AND MOUNTED IN ACCORDANCE WITH O.B.C. 3.8.3.12 (2P).

6 EMERGENCY SIGNAGE
A202 1 : 4

Door & Frame Schedules											
NUMBER	TYPE	SIZE (WxH)	DOOR PANEL			FRAME			HARDWARE	REMARKS	
			MATERIAL	FINISH	GLAZING	F.R.R.	PROFILE	FINISH			MATERIAL
001	B	800 x 2150 x 45	HM	PT	-	-	4A	PT	HM	LOCKSET	PRESS CALL BUTTON FOR ASSISTANCE
002	B	760 x 2150 x 45	HM	PT	-	-	4A	PT	HM	LOCKSET	REUSE EXISTING DOOR, REPAIR AND REFINISH
003	B	800 x 2150 x 45	HM	PT	-	-	4A	PT	HM	LOCKSET	



- HOLLOW METAL FRAME, CMU - BUTT RATED OR NON-RATED

GENERAL UNIVERSAL WASHROOM NOTES:
ALL WASHROOM ACCESSORIES TO BE INSTALLED WITHIN ACCESSIBLE REACH: NOT LESS THAN 900mm AND NOT MORE THAN 1100mm ABOVE FINISHED FLOOR UNLESS OTHERWISE NOTED.
BARRIER FREE PUSH BUTTON
CONTROLS FOR THE OPERATION OF THE SAFETY DEVICES, INCLUDING BUT NOT LIMITED TO EMERGENCY NURSE CALL CONTROL SWITCH SHALL BE OPERABLE USING A CLOSED FIST, WITH A FORCE OF NOT MORE THAN 22.2N AND BE MOUNTED NOT LESS THAN 900mm AND NOT MORE THAN 1100mm ABOVE FINISHED FLOOR.

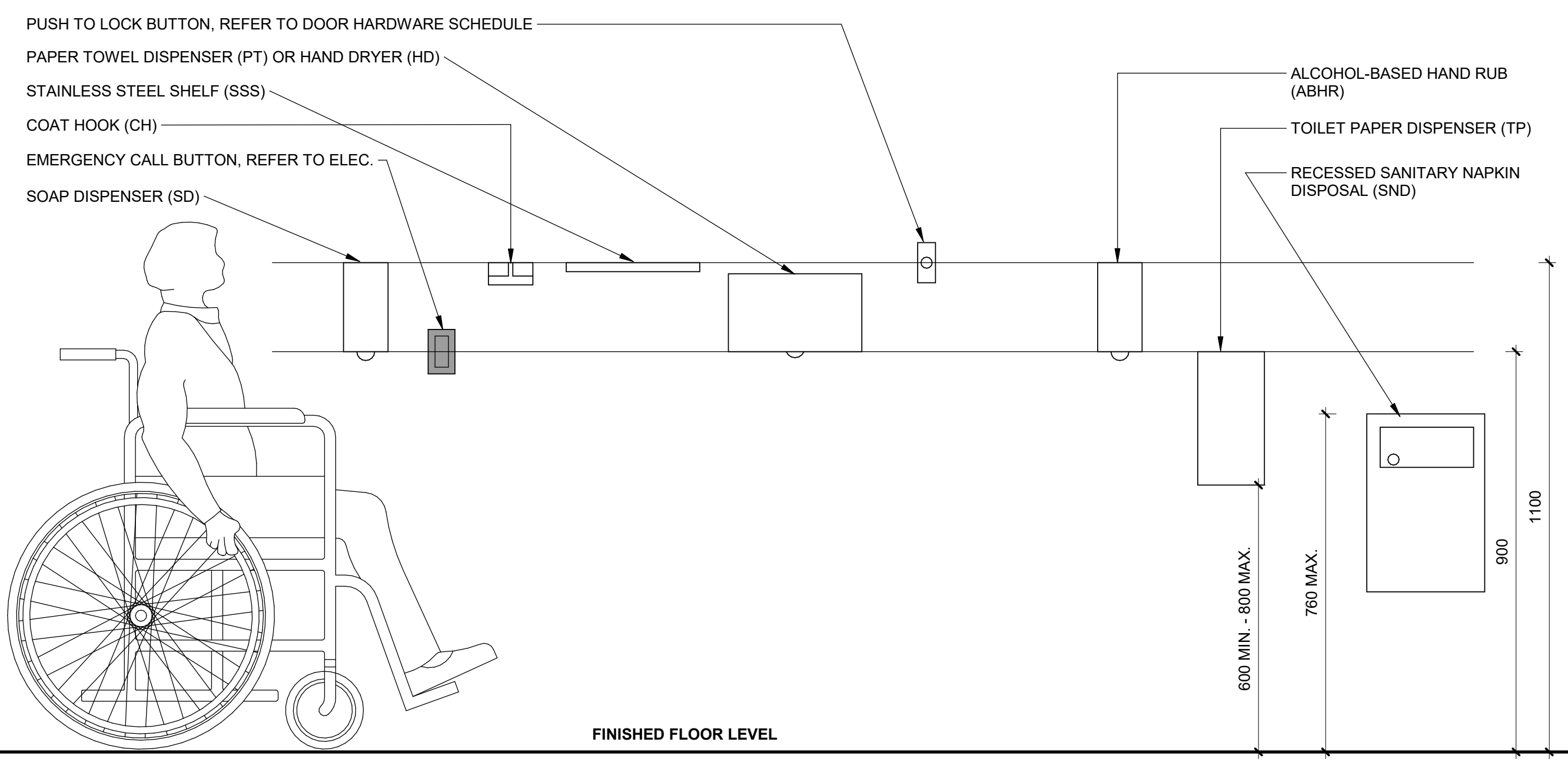
TOWEL DISPENSER OR OTHER HAND DRYING EQUIPMENT SHALL BE OPERABLE WITH ONE HAND AND IS TO BE INSTALLED NOT MORE THAN 1100mm ABOVE FINISHED FLOOR AND NOT MORE THAN 610mm FROM THE EDGE OF THE LAVATORY.
SOAP DISPENSERS TO BE INSTALLED SO THAT THE DISPENSING HEIGHT IS NOT MORE THAN 1100mm ABOVE FINISHED FLOOR AND WITHIN 500mm FROM THE FRONT OF THE LAVATORY.
WHERE A SHELF IS INSTALLED ABOVE A LAVATORY, IT SHALL BE LOCATED NOT MORE THAN 200mm ABOVE THE TOP OF THE LAVATORY AND NOT MORE THAN 1100mm ABOVE FINISHED FLOOR. IT SHALL NOT PROJECT MORE THAN 100mm FROM THE WALL.
COAT HOOKS SHALL BE MOUNTED ON A SIDE WALL AND PROJECT NOT MORE THAN 40mm FROM THE WALL.

NOTE: SITE VERIFY ALL WASHROOM ITEMS TO BE REMOVED

DEMOLITION NOTES	
1	REMOVE EXISTING FLOOR MOUNTED TOILETS PER MECHANICAL DRAWINGS AND SPECIFICATIONS
2	REMOVE EXISTING SINK AND FAUCET PER MECHANICAL DWGS AND SPECIFICATIONS
3	REMOVE EXISTING SOAP DISPENSER
4	REMOVE AND DISPOSE OF EXISTING MIRROR
5	REMOVE EXISTING HAND DRYERS AND TURN OVER TO THE OWNER
6	REMOVE EXISTING DOOR
7	REMOVE EXISTING CMU WALL
8	REMOVE EXISTING CUPBOARD AND RE-INSTALL AS AND WHERE REQUIRED
9	REMOVE EXISTING SIGN AND RE-LOCATE TO NEW DOOR LOCATION

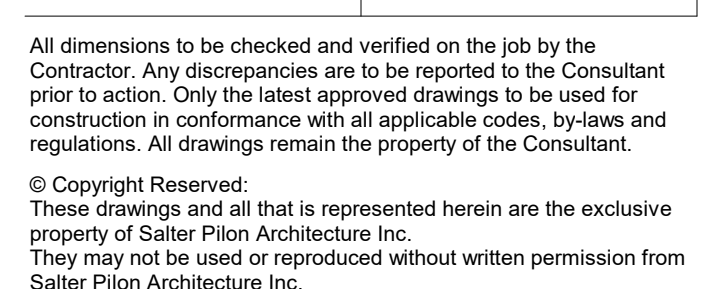
Alteration Room Finish Schedule														
Number	Name	Base		North		East		South		West		Ceiling		Finish Notes
		Material	Material	Material	Finish	Material	Finish	Material	Finish	Material	Finish	Material	Finish	
1	WR2	EX	EX	PT-3/PT-1	CMU	PT-3	CMU	PT-3	CMU	PT-3	CMU	PT-2	EX	
2	UNIVERSAL WASHROOM	T-1	-	WT-1	CMU	WT-1	CMU	WT-1	CMU	WT-1	CMU	PT-2	GWB	
3	OFFICE	EX	EX	PT-3	CMU	PT-3/PT-1	CMU	EX	EX	EX	EX	EX	EX	

RENOVATION NOTES	
1	INSTALL NEW FLOOR MOUNTED TANK TOILET PER MECHANICAL DWGS AND SPECIFICATIONS
2	INSTALL NEW SINK AND FAUCET PER MECHANICAL DWGS AND SPECIFICATIONS
3	INSTALL SOAP DISPENSER SUPPLIED BY OWNER
4	INSTALL NEW MIRRORS AS PER SPECIFICATIONS
5	INSTALL NEW HAND DRYER AS SPECIFIED BY MECHANICAL DWGS
6	INSTALL TOILET PAPER DISPENSER SUPPLIED BY OWNER
7	INSTALL NEW STAINLESS STEEL SHELF AS SPECIFIED
8	FUTURE ADULT CHANGE TABLE (N.I.C.)
9	RE-INSTALL SIGN
10	INSTALL NEW SIGN
11	INSTALL SANITARY NAPKIN DISPENSER SUPPLIED BY OWNER



7 Typ. Accessible Mounting Heights - Washroom accessories
A202 1 : 10

No.	Revision	Date
2	Issued for Tender	2026-03-27
1	Issued for Permit	2026-03-26



salterpilon architecture

151 Ferris Lane, Suite 400 Barrie, Ontario L4M 6C1
salterpilon.com t: 705.737.3530

Project Information
St. John Evangelist Catholic School
1103 Giffard Street, Whitby Ontario
Owner
Drawing Title
Enlarged Plan - Existing/Demolition/Alteration
Date: 2026-03-27 Project No: 25030B Drawing No: A202
Drawn by: BS Scale: As indicated

