



September 2, 2025

Durham Catholic District School Board
652 Rossland Road West
Oshawa, Ontario, L1J 8M7

Re: Asbestos Reassessment

St. John the Evangelist Catholic Element, 1103 Giffard Street, Whitby, Ontario
Pinchin File: 358839.000

Durham Catholic District School Board (DCDSB, Client) retained Pinchin Ltd. (Pinchin) to conduct an asbestos-containing materials (ACM) reassessment of St. John the Evangelist Catholic Element located at 1103 Giffard Street, Whitby, Ontario.

Pinchin performed the assessment on July 29, 2025. The assessor was unaccompanied during the assessment. The assessed area was occupied at the time of the assessment.

The objective of the reassessment was to evaluate the condition and quantity of previously reported ACM and develop corrective action plans as required. This assessment is only to be used for the purposes of long-term management and routine maintenance. The results of this assessment are not to be used for construction, renovation, demolition, or project tendering purposes.

The **assessed area** consisted of all accessible interior and exterior portions of the building where ACM were previously identified.

The scope included the following:

- Assessment of any rooms/areas that were inaccessible during the previous assessment (where access could be obtained).
- Sampling any new suspected ACM.
- Documentation of any asbestos abatement that was performed since the last reassessment.

Building materials outside the defined **assessed area** are not discussed in this report.



1.0 SUMMARY OF FINDINGS

The following asbestos-containing materials are present:

- Vinyl floor tiles and mastic
- Drywall joint compound
- Asbestos cement (Transite) panels on exterior fascia
- Vermiculite
- Thin set behind ceramic floor and wall tiles (presumed)
- Terrazzo (presumed)

2.0 RECOMMENDATIONS

2.1 Remedial Work

Remedial work is not required.

2.2 On-going Management and Maintenance

The following recommendations are provided regarding on-going management and maintenance work involving the ACM identified:

- Inspect all confirmed and presumed ACM at reasonable intervals and update the written documentation on annually as required by Ontario Regulation 278/05.
- Update the asbestos inventory report for all new information obtained (i.e., new materials, change of condition, abatement performed).
- Remove ACM before alteration or maintenance work if ACM may be disturbed. Follow appropriate asbestos precautions for the classification of work as per applicable regulations and guidelines.

2.3 Construction and Demolition

This assessment report does not provide sufficient detail to support renovation and demolition work. Therefore, perform a detailed intrusive assessment before building renovation or demolition operations. The assessment should include destructive testing (e.g., coring, removal of building finishes and components), sampling of other hazardous materials (e.g., lead, mercury, PCBs, mould, etc.), and any other materials not tested (e.g. roofing materials, caulking, mastics).



3.0 FINDINGS

3.1 Assessed Area Description Summary

Description Item	Details
Building Use	Elementary School
Floors	One Storey
Total Area (square feet)	30,800
Year of Construction	1955
Additions	1970
Structure	Concrete block foundation, Structural steel
Exterior Cladding	Brick
HVAC	Forced air HVAC, boiler, and hot water heating to radiators
Roof	Built-up roofing
Flooring	Vinyl floor tile, carpet, terrazzo, concrete, ceramic floor tile
Wall and Ceiling Finishes	Drywall, plaster, wood, concrete block, Transite panels, ceiling tiles, ceramic wall tiles

3.2 Existing Reports

3.2.1 Review of Previous Reports

Pinchin reviewed the following reports and included relevant results as appropriate:

- “Asbestos Building Materials Survey, St. John the Evangelist Catholic School, 1103 Giffard Street, Whitby, Ontario” dated October 2005, Pinchin File 30169.1103.
- “Hazardous Building Materials Assessment, St. John the Evangelist Catholic School, 1101 Gifford Street, Whitby, Ontario”, dated April 27, 2012, Pinchin File 75132.
- “Asbestos Reassessment, St. John the Evangelist Catholic Element, 1103 Giffard Street, Whitby, Ontario” dated August 28, 2024, Pinchin File: 345109.000.

3.2.2 Summary of New Information since the Previous Assessment

Based on a review of the above-noted reports, and observations made during the reassessment, the following is new information:

- 12” x 12” orange vinyl floor tiles were sampled from Classroom 118 (Loc. 33) and Classroom 113 (Loc. 44) and do not contain asbestos (samples S0032A-C). Quantities of these tiles replaced previously asbestos-containing vinyl floor tiles in Classroom 113 (sample S0019B) which was not analysed due to a positive result in a similar tile.



3.3 Summary of Building Materials

The following table summarizes the materials evaluated for asbestos in the assessed area. For details on locations, condition and approximate quantities of asbestos materials, refer to the Confirmed/Presumed ACM Report in Appendix V.

Sample Number	Material Description	Type of Asbestos	Confirmed Hazard	Approximate Quantity Present	Material Specific Notes
V0002	9" x 9" Beige with white streaks vinyl floor tiles and mastic	Chrysotile	Yes	400 SF	
S0003	12" x 12" Tan with white and brown flecks vinyl floor tiles and mastic	Chrysotile	Yes	3,305 SF	Mastic is presumed to contain asbestos
S0010	12" x 12" Tan with white and brown flecks vinyl floor tiles and mastic	Chrysotile	Yes	1,066 SF	Mastic is presumed to contain asbestos
S0017	9" x 9" Grey with black streaks vinyl floor tiles and mastic	Chrysotile	Yes	465 SF	Mastic is presumed to contain asbestos
S0018	9" x 9" Red with white streaks vinyl floor tiles and mastic	Chrysotile	Yes	400 SF	Mastic is presumed to contain asbestos
S0019	12" x 12" Orange-brown vinyl floor tiles and mastic	Chrysotile	Yes	2,550 SF	Mastic is confirmed to contain asbestos
S0020	12" x 12" Beige with dark streaks vinyl floor tiles and mastic	Chrysotile	Yes	3,062 SF	Mastic is presumed to contain asbestos
S0021	9" x 9" Red with dark red streaks vinyl floor tiles and mastic	Chrysotile	Yes	465 SF	Mastic is presumed to contain asbestos
V0028	Ceiling, Wall Drywall and joint compound	Chrysotile	Yes	2,736 SF	Drywall joint compound on ceilings and walls
V9000	Cement product (Transite)	Confirmed Asbestos	Yes	500 SF	Exterior fascia above the front entrance and surrounding the gym.



Sample Number	Material Description	Type of Asbestos	Confirmed Hazard	Approximate Quantity Present	Material Specific Notes
V9000	Vermiculite/concrete block walls	Confirmed Asbestos	Yes	400 SF	Vermiculite found in the Offices (Loc. 30) by client and confirmed to contain asbestos
V9500	Vermiculite/concrete block walls	Presumed Asbestos	Yes	19,650 SF	See Material Specific Note 1
V9500	Thin set beneath ceramic floor tiles	Presumed Asbestos	Yes	1,295 SF	
V9500	Terrazzo flooring	Presumed Asbestos	Yes	4,998 SF	
V9500	12" x 12" Light beige with white mottle vinyl floor tiles and mastic	Presumed Asbestos	Yes	20 SF	Mastic is presumed to contain asbestos
V9500	12" x 12" Beige with brown fleck vinyl floor tiles and mastic	Presumed Asbestos	Yes	90 SF	Mastic is presumed to contain asbestos
V9500	Mortar behind ceramic wall tiles	Presumed Asbestos	Yes	800 SF	

Any quantities listed in this report or data tables are estimated based on visual approximations only and are subject to variation.

Material Specific Notes:

1. Vermiculite containing asbestos is presumed to be present in all block wall and brick façade cavities until additional investigations is completed.

General Notes:

Materials identified as Sample Number V9500 were either observed to be present or based on the construction of the building/equipment are likely present in concealed locations. These materials have not been sampled and are presumed to contain asbestos based on historical known use of asbestos.

Sampling of these materials may be completed prior to disturbance.

Materials identified as Sample Number V9000 were observed to be present and were determined to contain asbestos based on previous analytical results, or labelling (e.g., Transite clearly labelled by the manufacturer).



3.3.1 *Excluded Asbestos Materials*

The following is a list of materials which may contain asbestos and was excluded from the assessment. These materials are presumed to contain asbestos until otherwise proven to be non-asbestos by sampling and analysis:

- Roofing felts and tar, mastics
- Floor levelling compound
- Electrical components
- Refractory materials and insulations in boilers, incinerators, and stacks
- Insulation under metal clad boilers and vessels
- Mechanical packing, ropes, and gaskets
- Adhesives and duct mastics
- Fire resistant doors
- Vibration dampers on HVAC equipment
- Ropes and gaskets in cast-iron bell and spigot joints
- Sealants on pipe threads

4.0 **METHODOLOGY**

Pinchin conducted an assessment to evaluate the current condition of all accessible ACM identified in the most recent assessment. The assessor made reference to any existing assessment or abatement reports (as provided by the Client).

As per the original scope of work, concealed locations such as ceiling spaces above solid ceilings, shafts and chases were accessed via existing access panels. Our investigation did not include demolition of drywall or plaster walls to view concealed conditions. Structural items or exterior building finishes were not removed to determine the presence of concealed materials.

Sampling, assessment, or verification of materials listed as exclusions in previous reports was not conducted unless otherwise indicated.

For further details on the methodology including test methods, refer to Appendix III.



5.0 REFERENCES

The following legislation and documents were referenced in completing the assessment and this report:

1. Asbestos on Construction Projects and in Buildings and Repair Operations, Ontario Regulation 278/05.
2. Designated Substances, Ontario Regulation 490/09.
3. Ministry of the Environment Regulation, R.R.O. 1990 Reg. 347 as amended.

6.0 TERMS AND LIMITATIONS

This work was performed subject to the Terms and Limitations presented or referenced in the proposal for this project.

Information provided by Pinchin is intended for Client use only. Pinchin will not provide results or information to any party unless disclosure by Pinchin is required by law. Any use by a third party of reports or documents authored by Pinchin or any reliance by a third party on or decisions made by a third party based on the findings described in said documents, is the sole responsibility of such third parties. Pinchin accepts no responsibility for damages suffered by any third party as a result of decisions made or actions conducted. No other warranties are implied or expressed.

7.0 CLOSURE

The data presented in the appendices is prepared by Pinchin's Hazardous Materials Inventory System (HMIS). The information contained within this report was current at the time of this report issue, and is provided as a summary; however, HMIS should be accessed for the most current data.

Should you have any questions or concerns regarding the contents of this letter, please contact the Project Manager, Mike Horobin at 905.245.0691 or mhorobin@pinchin.com.



Asbestos Reassessment

St. John the Evangelist Catholic Element, 1103 Giffard Street, Whitby, Ontario
Durham Catholic District School Board

September 2, 2025
Pinchin File: 358839.000

Sincerely,

Pinchin Ltd.

Prepared by:

Project Managed by:

Cole Reynolds, B.Sc.
Project Technologist

Mike Horobin, C.E.T., EP
Team Leader / Senior Project Manager

Reviewed by:

Dustin Copeland, C.Tech.
Director

- | | | |
|-------|--------------|----------------------------------|
| Encl: | APPENDIX I | Drawings |
| | APPENDIX II | Asbestos Analytical Certificates |
| | APPENDIX III | Methodology |
| | APPENDIX IV | Location Summary Report |
| | APPENDIX V | Confirmed / Presumed ACM Report |
| | APPENDIX VI | Photographs |








\\pinchin.com\pet\Job\358000s\0358839.000 DCDSB,2025AnnualReassessment,ASB,REASM\Deliverables\St. John the Evangelist\358839 Asb Rsmnt St John the Evangelist CS 1103 Giffard DCDSB Sep 2 2025.docx

Template: Master Template Asbestos Reassessment, HMIS, HAZ, March 13, 2024

APPENDIX I
Drawings



LEGEND

-  PINCHIN LOCATION NUMBER
-  ASBESTOS BULK SAMPLE
-  VERMICULITE DRILLHOLE
-  ORIGINAL PHASE OF CONSTRUCTION
-  1970 PHASE OF CONSTRUCTION
- ASBESTOS-CONTAINING MATERIALS:**
-  VINYL FLOOR TILES
-  VERMICULITE

NOT ALL KNOWN OR SUSPECTED ASBESTOS-CONTAINING BUILDING MATERIALS MAY BE DEPICTED ON THE DRAWING. REFER TO THE ASBESTOS REASSESSMENT REPORT FOR A COMPLETE LIST OF KNOWN AND SUSPECTED ASBESTOS-CONTAINING BUILDING MATERIALS.

LEGEND IS COLOUR DEPENDENT. NON-COLOUR COPIES MAY ALTER INTERPRETATION.

BASE PLAN PROVIDED BY CLIENT.



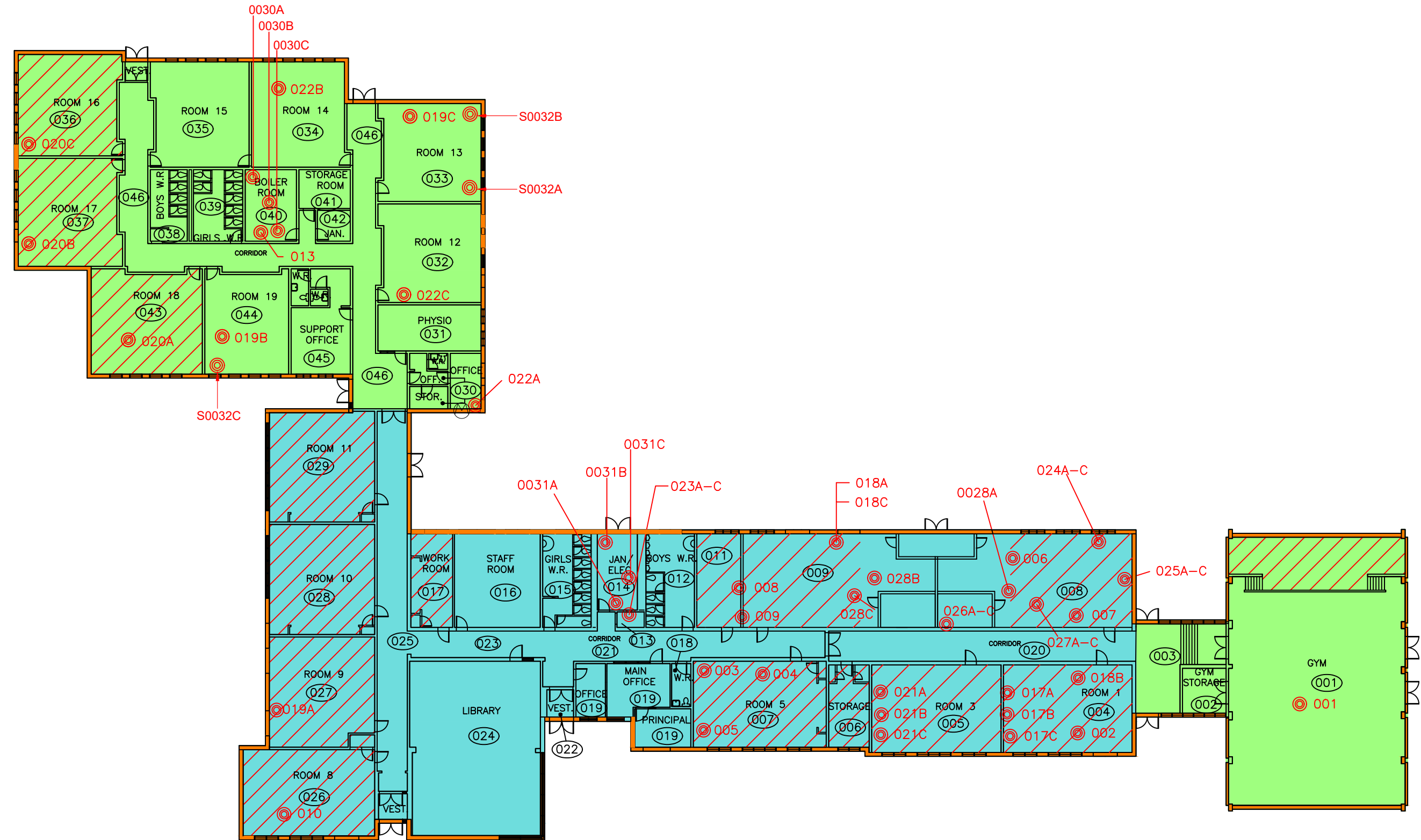
PROJECT NAME:
ASBESTOS REASSESSMENT

CLIENT NAME:
DURHAM CATHOLIC DISTRICT SCHOOL BOARD

PROJECT LOCATION:
**ST. JOHN THE EVANGELIST
1103 GIFFARD STREET
WHITBY, ON**

FIGURE NAME:
GROUND FLOOR

PROJECT NUMBER: 358839.000	SCALE: NOT TO SCALE
DRAWN BY: DP	REVIEWED BY: CR
DATE: AUGUST 2025	FIGURE NUMBER: 1 OF 1



APPENDIX II
Asbestos Analytical Certificates



Pinchin Environmental Asbestos Laboratory Certificate of Analysis

Project Name:	Durham Catholic School Board, St. John the Evangelist	Date Received:	September 2, 2005
Project No.:	30169	Date Analyzed:	September 9, 2005
Lab Reference No.:	b33068	# Samples submitted:	16
Analyst(s):	K. Bertuzzi	# Phases analyzed:	17

Bulk samples are checked visually and scanned under a stereomicroscope. Slides are prepared and observed under a Polarized Light Microscope (PLM) at magnifications of 40X, 100X or 400X as appropriate. Asbestos fibres are identified by a combination of morphology, colour, refractive index, extinction, sign of elongation, birefringence and dispersion staining colours. A visual estimate is made of the volume percentage of asbestos present. A reported concentration of less than (<) the regulatory threshold indicates the presence of confirmed asbestos in trace quantities limited to only a few fibres or fibre bundles in an entire sample. Refer to the chart below for the provincial regulatory thresholds. Multiple phases within a sample are analyzed separately.

All bulk samples submitted to this laboratory for asbestos analysis are retained for a minimum of one year. Samples may be retrieved, upon request, for re-examination at any time during that period.

Pinchin Environmental Ltd. is accredited by the National Institute of Standards and Technology, National Voluntary Laboratory Accreditation Program (NVLAP Code 101270-0) for selected test methods for the identification of asbestos in bulk samples and meets all requirements of ISO/IEC 17025:1999 and relevant requirements of ISO 9002:1994.

Provincial Jurisdiction	Regulatory Threshold	Methods of Analysis	
Ontario	0.5%	EPA 600/R-93/116	OHSD MOL
Quebec	0.1%	EPA 600/R-93/116	IRSST 244-2
Manitoba	0.1%	EPA 600/R-93/116	NIOSH 9002
British Columbia	1.0%	EPA 600/R-93/116	OHSD MOL
Alberta, Saskatchewan	Unstated, likely 1.0%	EPA 600/R-93/116	OHSD MOL
Atlantic Provinces (NL, NS, PEI, NB)	1.0%	EPA 600/R-93/116	OHSD MOL

Methods of Analysis:

EPA 600/R-93/116 - Method for the Determination of Asbestos in Bulk Building Materials dated July, 1993

OHSD MOL – Code for the Determination of Asbestos from Bulk Insulation Samples dated 23rd of August, 1985 issued by the Occupational Health and Safety Division of the Ontario Ministry of Labour

IRSST 244-2 - Characterization of fibres in settled dust or in bulk materials. Institut de recherche en santé et en sécurité du travail du Québec, Issued 1999

NIOSH 9002 Method – Bulk Asbestos Method, Issue 2 dated the 15th, August 1994

NOTE: *This test report may not be reproduced, except in full, without the written approval of the laboratory. The client may not use this report to claim product endorsement by NVLAP or any agency of the U.S. Government. This report is valid only when signed in blue ink by the analyst and the laboratory manager.*



Pinchin Environmental Asbestos Laboratory Certificate of Analysis

Project Name: Durham Catholic School Board, St. John the Evangelist
Project No.: 30169
Prepared For: Juliette McIntyre

Lab Reference No.: b33068
Date Analyzed: September 9, 2005

BULK SAMPLE ANALYSIS

SAMPLE IDENTIFICATION	SAMPLE DESCRIPTION	% COMPOSITION (VISUAL ESTIMATE)	
		ASBESTOS	OTHER
001 12" floor tile, white with beige markings, location #1	Homogeneous, white, consolidated material.	None Detected	Non-Fibrous Material > 75%
Comments:	Vinyl floor tiles may contain very fine asbestos fibres which are not visible using the PLM method. For confirmation of the absence of asbestos, analysis by Transmission Electron Microscopy (TEM) is recommended.		
002 9" floor tile, beige/white, location #4	Homogeneous, beige, consolidated material.	Chrysotile 5-10%	Non-Fibrous Material > 75%
Comments:	Vinyl floor tiles may contain very fine asbestos fibres which are not visible using the PLM method, therefore the estimated percentage of asbestos in this sample should be treated as a minimum value only.		
003 12" floor tile, off-white with beige markings, location #7	Homogeneous, off-white, consolidated material.	Chrysotile 0.5-5%	Non-Fibrous Material > 75%
Comments:	Vinyl floor tiles may contain very fine asbestos fibres which are not visible using the PLM method, therefore the estimated percentage of asbestos in this sample should be treated as a minimum value only.		
004 AT-05, Glued-on ceiling tile, location #7	Homogeneous, beige, layered, compressed, fibrous material.	None Detected	Cellulose > 75% Perlite 5-10% Other Non-Fibrous 0.5-5%

REVIEWED BY: K. Idlaye

ANALYST: K. Rorhingi



Pinchin Environmental Asbestos Laboratory Certificate of Analysis

Project Name: Durham Catholic School Board, St. John the Evangelist
Project No.: 30169
Prepared For: Juliette McIntyre

Lab Reference No.: b33068
Date Analyzed: September 9, 2005

BULK SAMPLE ANALYSIS

SAMPLE IDENTIFICATION	SAMPLE DESCRIPTION	% COMPOSITION (VISUAL ESTIMATE)	
		ASBESTOS	OTHER
005 Brown fibreboard and tar paper, location #7	a) Homogeneous, tan, compressed, fibrous material.	None Detected	Cellulose > 75% Non-Fibrous Material 0.5-5%
	b) Homogeneous, black, tar material.	None Detected	Tar and other non-fibrous > 75%
006 9" floor tile, green, location #8	Homogeneous, green, consolidated material.	Chrysotile 0.5-5%	Non-Fibrous Material > 75%
Comments:	Vinyl floor tiles may contain very fine asbestos fibres which are not visible using the PLM method, therefore the estimated percentage of asbestos in this sample should be treated as a minimum value only.		
007 9" floor tile, yellow, location #8	Homogeneous, yellow, consolidated material.	Chrysotile 0.5-5%	Non-Fibrous Material > 75%
Comments:	Vinyl floor tiles may contain very fine asbestos fibres which are not visible using the PLM method, therefore the estimated percentage of asbestos in this sample should be treated as a minimum value only.		
008 AT-06, Glued-on ceiling tile, location #11	Homogeneous, tan, compressed, fibrous material.	None Detected	Cellulose > 75%
009 AT-06, Glued-on ceiling tile, location #16	Homogeneous, tan, compressed, fibrous material.	None Detected	Cellulose > 75%

REVIEWED BY: K. Klayner

ANALYST: K. Restung



Pinchin Environmental Asbestos Laboratory Certificate of Analysis

Project Name: Durham Catholic School Board, St. John the Evangelist
Project No.: 30169
Prepared For: Juliette McIntyre

Lab Reference No.: b33068
Date Analyzed: September 9, 2005

BULK SAMPLE ANALYSIS

SAMPLE IDENTIFICATION	SAMPLE DESCRIPTION	% COMPOSITION (VISUAL ESTIMATE)	
		ASBESTOS	OTHER
010 12" floor tile, off-white/ beige, location 26	Homogeneous, beige, consolidated material.	Chrysotile 0.5-5%	Non-Fibrous Material > 75%
Comments:	Vinyl floor tiles may contain very fine asbestos fibres which are not visible using the PLM method, therefore the estimated percentage of asbestos in this sample should be treated as a minimum value only.		
011 Texture coat, location #40	Homogeneous, off-white, soft, cementitious material.	None Detected	Perlite Other Non-Fibrous 10-25% > 75%
012 Texture coat, location #40	Homogeneous, off-white, soft, cementitious material.	None Detected	Perlite Other Non-Fibrous 10-25% > 75%
013 Texture coat, location #40	Homogeneous, off-white, soft, cementitious material.	None Detected	Perlite Other Non-Fibrous 10-25% > 75%
014 Texture coat, location #47	Homogeneous, white, hard, cementitious material.	None Detected	Non-Fibrous Material > 75%
015 Texture coat, location #47	Homogeneous, white, hard, cementitious material.	None Detected	Non-Fibrous Material > 75%
016 Texture coat, location #47	Homogeneous, white, hard, cementitious material.	None Detected	Non-Fibrous Material > 75%

REVIEWED BY: Keddy

ANALYST: K. Bontempi

CERTIFICATE OF ANALYSIS

Client: Pinchin Environmental
5749 Coopers Ave
Mississauga ON L4Z-1R9

Report Date: 2/22/2006
Project: St.JohnEvangelist, Bldg1103
Project No.: 30169.1103

BULK SAMPLE ANALYSIS SUMMARY

Lab No.: 2499712	Description / Location: Tan Floor Tile; 9"			
Client No.: S017a	Loc 4			
<u>% Asbestos</u>	<u>Type</u>	<u>% Non-Asbestos Fibrous Material</u>	<u>Type</u>	<u>% Non-Fibrous Material</u>
PC 4.2	Chrysotile	None Detected	None Detected	PC 95.8

Lab No.: 2499713	Description / Location: Sample Not Analyzed			
Client No.: S017b				
<u>% Asbestos</u>	<u>Type</u>	<u>% Non-Asbestos Fibrous Material</u>	<u>Type</u>	<u>% Non-Fibrous Material</u>
Sample Not Analyzed		Sample Not Analyzed		

Lab No.: 2499714	Description / Location: Sample Not Analyzed			
Client No.: S017c				
<u>% Asbestos</u>	<u>Type</u>	<u>% Non-Asbestos Fibrous Material</u>	<u>Type</u>	<u>% Non-Fibrous Material</u>
Sample Not Analyzed		Sample Not Analyzed		

Lab No.: 2499715	Description / Location: Red Floor Tile; 9"			
Client No.: S018a	Loc 10			
<u>% Asbestos</u>	<u>Type</u>	<u>% Non-Asbestos Fibrous Material</u>	<u>Type</u>	<u>% Non-Fibrous Material</u>
PC 2.1	Chrysotile	None Detected	None Detected	PC 97.9

NIST-NVLAP No. 101165-0

NY-DOH No. 11021

AIHA Lab No. 100188

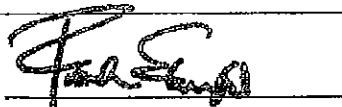
This confidential report relates only to those item(s) tested and does not represent an endorsement by NIST-NVLAP, AIHA or any agency of the U.S. government. This report shall not be reproduced except in full, without written approval of the laboratory.

Analysis Method: EPA 600/R-93/116

Comments: (PC) Indicates Stratified Point Count Method performed. Method not performed unless stated. Small asbestos fibers may be missed by PLM due to resolution limitations of the optical microscope. Therefore, negative PLM results cannot be guaranteed. Electron Microscopy can be used as a confirming technique. Regulatory Limit is based upon the sample matrix. Quantification at <1% by volume is possible with this method. Analysis includes all distinct separable layers in accordance with EPA 600 Method. If not reported or otherwise noted, layer is either not present or the client has specifically requested that it not be analyzed.

Analysis Performed By: B. Faulseit

Approved By:



Frank E. Ehrenfeld, III
Laboratory Director

Date: 2/21/2006

CERTIFICATE OF ANALYSIS

Client:	Pinchin Environmental	Report Date:	2/22/2006
	5749 Coopers Ave	Project:	St.JohnEvangelist, Bldg1103
	Mississauga ON L4Z-1R9	Project No.:	30169.1103

BULK SAMPLE ANALYSIS SUMMARY

Lab No.:	2499716	Description / Location:	Sample Not Analyzed	
Client No.:	S018b			
<u>% Asbestos</u>	<u>Type</u>	<u>% Non-Asbestos Fibrous Material</u>	<u>Type</u>	<u>% Non-Fibrous Material</u>
Sample Not Analyzed		Sample Not Analyzed		

Lab No.:	2499717	Description / Location:	Sample Not Analyzed	
Client No.:	S018c			
<u>% Asbestos</u>	<u>Type</u>	<u>% Non-Asbestos Fibrous Material</u>	<u>Type</u>	<u>% Non-Fibrous Material</u>
Sample Not Analyzed		Sample Not Analyzed		

Lab No.:	2499718	Description / Location:	Tan Floor Tile; 12"	
Client No.:	S019a		Loc 27	
<u>% Asbestos</u>	<u>Type</u>	<u>% Non-Asbestos Fibrous Material</u>	<u>Type</u>	<u>% Non-Fibrous Material</u>
None Detected	None Detected	None Detected	None Detected	100

Lab No.:	2499718	Description / Location:	Black Mastic	Layer No.:	2
Client No.:	S019a		Loc 27		
<u>% Asbestos</u>	<u>Type</u>	<u>% Non-Asbestos Fibrous Material</u>	<u>Type</u>	<u>% Non-Fibrous Material</u>	
PC 2.5	Chrysotile	None Detected	None Detected	PC 97.5	

NIST-NVLAP No. 101165-0

NY-DOH No. 11021

AIHA Lab No. 100188

*This confidential report relates only to those item(s) tested and does not represent an endorsement by NIST-NVLAP, AIHA or any agency of the U.S. government
This report shall not be reproduced except in full, without written approval of the laboratory.*

Analysis Method: EPA 600/R-93/116

Comments: (PC) Indicates Stratified Point Count Method performed. Method not performed unless stated. Small asbestos fibers may be missed by PLM due to resolution limitations of the optical microscope. Therefore, negative PLM results cannot be guaranteed. Electron Microscopy can be used as a confirming technique. Regulatory Limit is based upon the sample matrix. Quantification at <1% by volume is possible with this method. Analysis includes all distinct separable layers in accordance with EPA 600 Method. If not reported or otherwise noted, layer is either not present or the client has specifically requested that it not be analyzed.

Analysis Performed By: B. Faulseit

Date: 2/21/2006

CERTIFICATE OF ANALYSIS

Client:	Pinchin Environmental	Report Date:	2/22/2006
	5749 Coopers Ave	Project:	St.JohnEvangelist, Bldg1103
	Mississauga ON L4Z-1R9	Project No.:	30169.1103

BULK SAMPLE ANALYSIS SUMMARY

Lab No.:	2499719	Description / Location:	Tan Floor Tile; 12"	
Client No.:	S019b		Loc 44	
<u>% Asbestos</u>	<u>Type</u>	<u>% Non-Asbestos Fibrous Material</u>	<u>Type</u>	<u>% Non-Fibrous Material</u>
None Detected	None Detected	None Detected	None Detected	100

Lab No.:	2499720	Description / Location:	Tan Floor Tile; 12"	
Client No.:	S019c		Loc 33	
<u>% Asbestos</u>	<u>Type</u>	<u>% Non-Asbestos Fibrous Material</u>	<u>Type</u>	<u>% Non-Fibrous Material</u>
None Detected	None Detected	None Detected	None Detected	100

Lab No.:	2499721	Description / Location:	Tan Floor Tile; 12"	
Client No.:	S020a		Loc 43	
<u>% Asbestos</u>	<u>Type</u>	<u>% Non-Asbestos Fibrous Material</u>	<u>Type</u>	<u>% Non-Fibrous Material</u>
PC 3.2	Chrysotile	None Detected	None Detected	PC 96.8

Lab No.:	2499722	Description / Location:	Sample Not Analyzed	
Client No.:	S020b			
<u>% Asbestos</u>	<u>Type</u>	<u>% Non-Asbestos Fibrous Material</u>	<u>Type</u>	<u>% Non-Fibrous Material</u>
Sample Not Analyzed		Sample Not Analyzed		

NIST-NVLAP No. 101165-0

NY-DOH No. 11021

AIHA Lab No. 100188

This confidential report relates only to those item(s) tested and does not represent an endorsement by NIST-NVLAP, AIHA or any agency of the U.S. government

This report shall not be reproduced except in full, without written approval of the laboratory.

Analysis Method: EPA 600/R-93/116

Comments: (PC) Indicates Stratified Point Count Method performed. Method not performed unless stated. Small asbestos fibers may be missed by PLM due to resolution limitations of the optical microscope. Therefore, negative PLM results cannot be guaranteed. Electron Microscopy can be used as a confirming technique. Regulatory Limit is based upon the sample matrix. Quantification at <1% by volume is possible with this method. Analysis includes all distinct separable layers in accordance with EPA 600 Method. If not reported or otherwise noted, layer is either not present or the client has specifically requested that it not be analyzed.

Analysis Performed By: B. Faulseit

Date: 2/21/2006

CERTIFICATE OF ANALYSIS

Client: Pinchin Environmental
5749 Coopers Ave
Mississauga ON L4Z-1R9

Report Date: 2/22/2006
Project: St. John Evangelist, Bldg 1103
Project No.: 30169.1103

BULK SAMPLE ANALYSIS SUMMARY

Lab No.: 2499723 **Description / Location:** Sample Not Analyzed
Client No.: S020c

<u>% Asbestos</u>	<u>Type</u>	<u>% Non-Asbestos Fibrous Material</u>	<u>Type</u>	<u>% Non-Fibrous Material</u>
Sample Not Analyzed		Sample Not Analyzed		

Lab No.: 2499724 **Description / Location:** Red Floor Tile; 9"
Client No.: S021a Loc 5

<u>% Asbestos</u>	<u>Type</u>	<u>% Non-Asbestos Fibrous Material</u>	<u>Type</u>	<u>% Non-Fibrous Material</u>
PC 3.5	Chrysotile	None Detected	None Detected	PC 96.5

Lab No.: 2499725 **Description / Location:** Sample Not Analyzed
Client No.: S021b

<u>% Asbestos</u>	<u>Type</u>	<u>% Non-Asbestos Fibrous Material</u>	<u>Type</u>	<u>% Non-Fibrous Material</u>
Sample Not Analyzed		Sample Not Analyzed		

Lab No.: 2499726 **Description / Location:** Sample Not Analyzed
Client No.: S021c

<u>% Asbestos</u>	<u>Type</u>	<u>% Non-Asbestos Fibrous Material</u>	<u>Type</u>	<u>% Non-Fibrous Material</u>
Sample Not Analyzed		Sample Not Analyzed		

NIST-NVLAP No. 101165-0

NY-DOH No. 11021

AIHA Lab No. 100188

*This confidential report relates only to those item(s) tested and does not represent an endorsement by NIST-NVLAP, AIHA or any agency of the U.S. government
This report shall not be reproduced except in full, without written approval of the laboratory.*

Analysis Method: EPA 600/R-93/116

Comments: (PC) Indicates Stratified Point Count Method performed. Method not performed unless stated. Small asbestos fibers may be missed by PLM due to resolution limitations of the optical microscope. Therefore, negative PLM results cannot be guaranteed. Electron Microscopy can be used as a confirming technique. Regulatory Limit is based upon the sample matrix. Quantification at <1% by volume is possible with this method. Analysis includes all distinct separable layers in accordance with EPA 600 Method. If not reported or otherwise noted, layer is either not present or the client has specifically requested that it not be analyzed.

Analysis Performed By: B. Faulseit

Date: 2/21/2006

CERTIFICATE OF ANALYSIS

Client: Pinchin Environmental
5749 Coopers Ave
Mississauga ON L4Z-1R9

Report Date: 2/22/2006
Project: St.JohnEvangelist, Bldg1103
Project No.: 30169.1103

BULK SAMPLE ANALYSIS SUMMARY

Lab No.: 2499727 **Description / Location:** White Floor Tile; 12"
Client No.: S022a Loc 30

<u>% Asbestos</u>	<u>Type</u>	<u>% Non-Asbestos Fibrous Material</u>	<u>Type</u>	<u>% Non-Fibrous Material</u>
None Detected	None Detected	None Detected	None Detected	100

Lab No.: 2499727 **Description / Location:** Black Mastic **Layer No.:** 2
Client No.: S022a Loc 30

<u>% Asbestos</u>	<u>Type</u>	<u>% Non-Asbestos Fibrous Material</u>	<u>Type</u>	<u>% Non-Fibrous Material</u>
None Detected	None Detected	5	Cellulose	95

Lab No.: 2499728 **Description / Location:** White Floor Tile; 12"
Client No.: S022b Loc 34

<u>% Asbestos</u>	<u>Type</u>	<u>% Non-Asbestos Fibrous Material</u>	<u>Type</u>	<u>% Non-Fibrous Material</u>
None Detected	None Detected	None Detected	None Detected	100

NIST-NVLAP No. 101165-0

NY-DOH No. 11021

AIHA Lab No. 100188

*This confidential report relates only to those item(s) tested and does not represent an endorsement by NIST-NVLAP, AIHA or any agency of the U.S. government
This report shall not be reproduced except in full, without written approval of the laboratory.*

Analysis Method: EPA 600/R-93/116

Comments: (PC) Indicates Stratified Point Count Method performed. Method not performed unless stated. Small asbestos fibers may be missed by PLM due to resolution limitations of the optical microscope. Therefore, negative PLM results cannot be guaranteed. Electron Microscopy can be used as a confirming technique. Regulatory Limit is based upon the sample matrix. Quantification at <1% by volume is possible with this method. Analysis includes all distinct separable layers in accordance with EPA 600 Method. If not reported or otherwise noted, layer is either not present or the client has specifically requested that it not be analyzed.

Analysis Performed By: B. Faulseit

Date: 2/21/2006

CERTIFICATE OF ANALYSIS

Client: Pinchin Environmental
5749 Coopers Ave
Mississauga ON L4Z-1R9

Report Date: 2/22/2006
Project: St.JohnEvangelist, Bldg1103
Project No.: 30169.1103

BULK SAMPLE ANALYSIS SUMMARY

Lab No.: 2499729 **Description / Location:** White Floor Tile; 12"
Client No.: S022c Loc 32

<u>% Asbestos</u>	<u>Type</u>	<u>% Non-Asbestos Fibrous Material</u>	<u>Type</u>	<u>% Non-Fibrous Material</u>
None Detected	None Detected	None Detected	None Detected	100

Lab No.: 2499729 **Description / Location:** Black Mastic **Layer No.:** 2
Client No.: S022c Loc 32

<u>% Asbestos</u>	<u>Type</u>	<u>% Non-Asbestos Fibrous Material</u>	<u>Type</u>	<u>% Non-Fibrous Material</u>
None Detected	None Detected	2	Cellulose	98

NIST-NVLAP No. 101165-0

NY-DOH No. 11021

AIHA Lab No. 100188

*This confidential report relates only to those item(s) tested and does not represent an endorsement by NIST-NVLAP, AIHA or any agency of the U.S. government
This report shall not be reproduced except in full, without written approval of the laboratory.*

Analysis Method: EPA 600/R-93/116

Comments: (PC) Indicates Stratified Point Count Method performed. Method not performed unless stated. Small asbestos fibers may be missed by PLM due to resolution limitations of the optical microscope. Therefore, negative PLM results cannot be guaranteed. Electron Microscopy can be used as a confirming technique. Regulatory Limit is based upon the sample matrix. Quantification at <1% by volume is possible with this method. Analysis includes all distinct separable layers in accordance with EPA 600 Method. If not reported or otherwise noted, layer is either not present or the client has specifically requested that it not be analyzed.

Analysis Performed By: B. Faulseit

Date: 2/21/2006



BULK SAMPLE TRANSMITTAL FORM

5749 Coopers Ave.
Mississauga, ON L4Z 1R9

Project Name: St. John The Evangelist		Results To: Rebecca Dixon	
		Phone: 905-683-0202 Fax: 906-683-8186	
		Email: rdixon@pinchin.com	
Project #: 30169.1103	Building #: 1103	Copy To: Juliette McIntyre	
Submitted By: Rebecca Dixon		Phone: 905-683-0202 Fax: 905-683-8186	
		Email: jmcintyre@pinchin.com	
Date: 02/17/06	P.O. #:	Invoice Required	<input type="checkbox"/> Yes <input type="checkbox"/> No
# of Samples: 18	Date Required: Tuesday, Feb. 21, 2006	Priority:	<input type="checkbox"/> Reg <input type="checkbox"/> Rush

SAMPLE NUMBER	MATERIAL / SYSTEM / LOCATION	RESULT
S017a	Vinyl floor tile, 9 inch grey with black, location 4	
S017b	Vinyl floor tile, 9 inch grey with black, location 4	
S017c	Vinyl floor tile, 9 inch grey with black, location 4	
S018a	Vinyl floor tile, 9 inch red with white, location 10	
S018b	Vinyl floor tile, 9 inch red with white, location 4	
S018c	Vinyl floor tile, 9 inch red with white, location 10	
S019a	Vinyl floor tile, 12 inch orange-brown, location 27	
S019b	Vinyl floor tile, 12 inch orange-brown, location 44	
S019c	Vinyl floor tile, 12 inch orange-brown, location 33	
S020a	Vinyl floor tile, 12 inch off-white with grey streaks, location 43	

E.g. Vinyl floor tile, beige and white, Managers Office, 2nd Floor, Room 123, Location 22.

E.g. Parging cement insulation on pipe fitting, domestic hot water system, Basement, Boiler Room, Room B1, Location 1.

TO BE COMPLETED BY LAB PERSONNEL ONLY	LAB REF. #:
Analyzed By:	Date:



BULK SAMPLE TRANSMITTAL FORM

5749 Coopers Ave.
Mississauga, ON L4Z 1R9

Project Name: St. John The Evangelist		Results To: Rebecca Dixon	
		Phone: 905-683-0202 Fax: 906-683-8186	
		Email: rdixon@pinchin.com	
Project #: 30169.1103	Building #: 1103	Copy To: Juliette McIntyre	
Submitted By: Rebecca Dixon		Phone: 905-683-0202 Fax: 905-683-8186	
		Email: jmcintyre@pinchin.com	
Date: 02/17/06	P.O. #:	Invoice Required	<input type="checkbox"/> Yes <input type="checkbox"/> No
# of Samples: 18	Date Required: Tuesday, Feb. 21, 2006	Priority:	<input type="checkbox"/> Reg <input type="checkbox"/> Rush

SAMPLE NUMBER	MATERIAL / SYSTEM / LOCATION	RESULT
S020b	Vinyl floor tile, 12 inch off-white with grey streaks, location 37	
S020c	Vinyl floor tile, 12 inch off-white with grey streaks, location 36	
S021a	Vinyl floor tile, 9 inch red, location 5	
S021b	Vinyl floor tile, 9 inch red, location 5	
S021c	Vinyl floor tile, 9 inch red, location 5	
S022a	Vinyl floor tile, 12 inch white, location 30	
S022b	Vinyl floor tile, 12 inch white, location 34	
S022c	Vinyl floor tile, 12 inch white, location 32	

E.g. Vinyl floor tile, beige and white, Managers Office, 2nd Floor, Room 123, Location 22.

E.g. Parging cement insulation on pipe fitting, domestic hot water system, Basement, Boiler Room, Room B1, Location 1.

TO BE COMPLETED BY LAB PERSONNEL ONLY	LAB REF. #:
Analyzed By:	Date:



Pinchin Environmental Asbestos Laboratory Certificate of Analysis

Project Name:	St. John The Evangelist, Building 1103	Date Received:	August 15, 2008
Project No.:	47831	Date Analyzed:	August 18, 2008
Lab Reference No.:	b54807	# Samples submitted:	3
Analyst(s):	D. Aiken	# Phases analyzed:	1

Method of Analysis:

EPA 600/R-93/116 - Method for the Determination of Asbestos in Bulk Building Materials dated July, 1993

Bulk samples are checked visually and scanned under a stereomicroscope. Slides are prepared and observed under a Polarized Light Microscope (PLM) at magnifications of 40X, 100X or 400X as appropriate. Asbestos fibres are identified by a combination of morphology, colour, refractive index, extinction, sign of elongation, birefringence and dispersion staining colours. A visual estimate is made of the percentage of asbestos present. The percentage range category reported reflects the level of uncertainty of the method for estimating quantities of asbestos in bulk samples. A reported concentration of less than (<) the regulatory threshold (see chart below) indicates the presence of confirmed asbestos in trace quantities, limited to only a few fibres or fibre bundles in an entire sample. This method complies with all provincial regulatory requirements (NIOSH 9002, I.R.S.S.T. 244-2). Multiple phases within a sample are analyzed separately.

Provincial Jurisdiction	Regulatory Threshold	Provincial Jurisdiction	Regulatory Threshold
Ontario	0.5%	Manitoba	0.1% friable 1% non-friable
Quebec	0.1%	Saskatchewan	Unstated, likely 1.0%
Alberta, British Columbia, NWT, Yukon, Nunavut	1.0%	Atlantic Provinces (NL, NS, PEI, NB)	1.0%

All bulk samples submitted to this laboratory for asbestos analysis are retained for a minimum of three months. Samples may be retrieved, upon request, for re-examination at any time during that period.

Pinchin Environmental Ltd. is accredited by the National Institute of Standards and Technology, National Voluntary Laboratory Accreditation Program (NVLAP Lab Code 101270-0 and 200795-0) for selected test methods for the identification of asbestos in bulk samples and meets all requirements of ISO/IEC 17025:1999 and relevant requirements of ISO 9002:1994.

NOTE: *This test report may not be reproduced, except in full, without the written approval of the laboratory. The client may not use this report to claim product endorsement by NVLAP or any agency of the U.S. Government. This report is valid only when signed in blue ink by the analyst and the laboratory manager.*



**Pinchin Environmental Asbestos Laboratory
Certificate of Analysis**

Project Name: St. John The Evangelist, Building 1103
Project No.: 47831
Prepared For: Mike Wilson

Lab Reference No.: b54807
Date Analyzed: August 18, 2008

BULK SAMPLE ANALYSIS

SAMPLE IDENTIFICATION	SAMPLE DESCRIPTION	% COMPOSITION (VISUAL ESTIMATE)	
		ASBESTOS	OTHER
S023a Vinyl Sheet Flooring - Janitor Closet, Brick Pattern	Homogeneous, beige, consolidated, fibrous material on the back of vinyl sheet flooring.	Chrysotile 50-75%	Cellulose Non-Fibrous Material 25-50% 5-10%
S023b Vinyl Sheet Flooring - Janitor Closet, Brick Pattern			Not Analyzed
Comments:	Analysis was stopped due to a previous positive result.		
S023c Vinyl Sheet Flooring - Janitor Closet, Brick Pattern			Not Analyzed
Comments:	Analysis was stopped due to a previous positive result.		

ANALYST: Dyl al



Bulk Asbestos Analysis

By Polarized Light Microscopy
EPA Method: 600/R-93/116 and 600/M4-82-020



Customer: Pinchin Environmental Ltd
2470 Milltower Court
Mississauga, ONT L5N 7W5

Attn: Christopher Richardson

Lab Order ID: 1206832

Analysis ID: 1206832PLM

Date Received: 4/23/2012

Date Reported: 4/26/2012

Project: 75132-DCSB St John the Evangelist

Sample ID	Description	Asbestos	Fibrous Components	Non-Fibrous Components	Attributes
Lab Sample ID	Lab Notes				Treatment
0024A	VFT-9" x 9" Yellow w/ yellow streaks. Room 2 (HMIS location 008)	3% Chrysotile		97% Other	Yellow Non Fibrous Heterogeneous
1206832PLM_1	tile only				
0024B - A	VFT-9" x 9" Yellow w/ yellow streaks. Room 2 (HMIS location 008)	Not Analyzed			
1206832PLM_2	tile				
0024B - B	VFT-9" x 9" Yellow w/ yellow streaks. Room 2 (HMIS location 008)	None Detected		100% Other	Black Non Fibrous Heterogeneous
1206832PLM_16	mastic				
0024C - A	VFT-9" x 9" Yellow w/ yellow streaks. Room 2 (HMIS location 008)	Not Analyzed			
1206832PLM_3	tile				
0024C - B	VFT-9" x 9" Yellow w/ yellow streaks. Room 2 (HMIS location 008)	None Detected		100% Other	Black Non Fibrous Heterogeneous
1206832PLM_17	mastic				
0025A	VFT-9" x 9" Blue w/ blue streaks. Room 2 (HMIS location 008)	5% Chrysotile		95% Other	Blue Non Fibrous Heterogeneous
1206832PLM_4	tile only				
0025B	VFT-9" x 9" Blue w/ blue streaks. Room 2 (HMIS location 008)	Not Analyzed			
1206832PLM_5	tile only				
0025C	VFT-9" x 9" Blue w/ blue streaks. Room 2 (HMIS location 008)	Not Analyzed			
1206832PLM_6	tile only				

Disclaimer: Due to the nature of the EPA 600 method, asbestos may not be detected in samples containing low levels of asbestos. We strongly recommend that analysis of floor tiles, vermiculite, and/or heterogeneous soil samples be conducted by TEM for confirmation of "None Detected" by PLM. This report relates only to the samples tested and may not be reproduced, except in full, without the written approval of SAI. This report may not be used by the client to claim product endorsement by NVLAP or any other agency of the U.S. government. Estimated MDL is 0.1%.

Ired Gulley (20)

Analyst

Scientific Analytical Institute, Inc. 302-L Pomona Dr. Greensboro, NC 27407 (336) 292-3888

Nathaniel Durham, MS or Approved Signatory



Bulk Asbestos Analysis

By Polarized Light Microscopy
EPA Method: 600/R-93/116 and 600/M4-82-020



Customer: Pinchin Environmental Ltd
2470 Milltower Court
Mississauga, ONT L5N 7W5

Attn: Christopher Richardson

Lab Order ID: 1206832

Analysis ID: 1206832PLM

Date Received: 4/23/2012

Date Reported: 4/26/2012

Project: 75132-DCSB St John the Evangelist

Sample ID	Description	Asbestos	Fibrous Components	Non-Fibrous Components	Attributes
Lab Sample ID	Lab Notes				
0026A - A	VCT- 12" x 12" White w/ grey streaks. Room 4 (HMIS Location 009)	None Detected		100% Other	White Non Fibrous Heterogeneous
1206832PLM_7	tile				
0026A - B	VCT- 12" x 12" White w/ grey streaks. Room 4 (HMIS Location 009)	None Detected	5% Cellulose	95% Other	Black Non Fibrous Heterogeneous
1206832PLM_18	mastic				
0026B - A	VCT- 12" x 12" White w/ grey streaks. Room 4 (HMIS Location 009)	None Detected		100% Other	White Non Fibrous Heterogeneous
1206832PLM_8	tile				
0026B - B	VCT- 12" x 12" White w/ grey streaks. Room 4 (HMIS Location 009)	None Detected	5% Cellulose	95% Other	Black Non Fibrous Heterogeneous
1206832PLM_19	mastic				
0026C - A	VCT- 12" x 12" White w/ grey streaks. Room 4 (HMIS Location 009)	None Detected		100% Other	White Non Fibrous Heterogeneous
1206832PLM_9	tile				
0026C - B	VCT- 12" x 12" White w/ grey streaks. Room 4 (HMIS Location 009)	None Detected	3% Cellulose	97% Other	Black Non Fibrous Heterogeneous
1206832PLM_20	mastic				
0027A	2'x 4' white ACT w/ long fissures Room 2 (HMIS location 008)	None Detected	40% Cellulose	10% Perlite	White Fibrous Heterogeneous
1206832PLM_10			40% Fiber Glass	10% Other	
0027B	2'x 4' white ACT w/ long fissures Room 2 (HMIS location 008)	None Detected	40% Cellulose	10% Perlite	White Fibrous Heterogeneous
1206832PLM_11			40% Fiber Glass	10% Other	

Disclaimer: Due to the nature of the EPA 600 method, asbestos may not be detected in samples containing low levels of asbestos. We strongly recommended that analysis of floor tiles, vermiculite, and/or heterogeneous soil samples be conducted by TEM for confirmation of "None Detected" by PLM. This report relates only to the samples tested and may not be reproduced, except in full, without the written approval of SAI. This report may not be used by the client to claim product endorsement by NVLAP or any other agency of the U.S. government. Estimated MDL is 0.1%.

Ired Gulley (20)

Analyst

Nathaniel Durham, MS or Approved Signatory



Bulk Asbestos Analysis

By Polarized Light Microscopy
EPA Method: 600/R-93/116 and 600/M4-82-020



Customer: Pinchin Environmental Ltd
2470 Milltower Court
Mississauga, ONT L5N 7W5

Attn: Christopher Richardson

Lab Order ID: 1206832

Analysis ID: 1206832PLM

Date Received: 4/23/2012

Date Reported: 4/26/2012

Project: 75132-DCSB St John the Evangelist

Sample ID	Description	Asbestos	Fibrous Components	Non-Fibrous Components	Attributes
Lab Sample ID	Lab Notes				Treatment
0027C	2'x 4' white ACT w/ long fissures Room 2 (HMIS location 008)	None Detected	40% Cellulose 40% Fiber Glass	10% Perlite 10% Other	White Fibrous Heterogeneous
1206832PLM_12					Teased
0028A	Drywall compound. Room 2 (HMIS location 008)	None Detected		100% Other	White Non Fibrous Heterogeneous
1206832PLM_13					Teased
0028B	Drywall compound. Room 4 (HMIS location 009)	None Detected		100% Other	White Non Fibrous Heterogeneous
1206832PLM_14					Teased
0028C	Drywall compound. Storage Room (HMIS location 010)	3% Chrysotile		97% Other	White Non Fibrous Heterogeneous
1206832PLM_15					Teased

Disclaimer: Due to the nature of the EPA 600 method, asbestos may not be detected in samples containing low levels of asbestos. We strongly recommend that analysis of floor tiles, vermiculite, and/or heterogeneous soil samples be conducted by TEM for confirmation of "None Detected" by PLM. This report relates only to the samples tested and may not be reproduced, except in full, without the written approval of SAI. This report may not be used by the client to claim product endorsement by NVLAP or any other agency of the U.S. government. Estimated MDL is 0.1%.

Ired Gulley (20)

Analyst

Nathaniel Durham, MS or Approved Signatory

1206832

Version 1-15-2012

Client:	Pinchin Environmental Ltd.
Contact:	Christopher Richardson
Address:	2470 Milltower court
Phone:	905-363-0678
Fax:	905-363-0681
Email:	crichardson@pinchin.com
Project:	75132-DCSB St. John the Evangelist
Client Notes:	[Enter Client Notes Here]
P.O. #:	[Enter P.O. # Here]
Date Submitted:	4/20/2012 0:00
Analysis:	3 Day

***Instructions:**
Use Column "B" for your contact info

To See an Example Click the bottom Example Tab.

Enter samples between "<<" and ">>"
Begin Samples with a "<<" above the first sample and end with a ">>" below the last sample.
Only Enter your data on the first sheet "Sheet1"

Note: Data 1 and Data 2 are optional fields that do not show up on the official report, however they will be included in the electronic data returned to you for your reintegration of the report data.

Scientific Analytical Institute



4604 Dundas Dr.
Greensboro, NC 27407
Phone: 336.292.3888
Fax: 336.292.3313
Email: lab@sailab.com

Sample Number	Date (Lab use only)	Sample Description	Data 2 (Lab use only)
<<			
0024A		VFT-9" x 9" Yellow w/ yellow streaks. Room 2 (HMIS location 008)	
0024B		VFT-9" x 9" Yellow w/ yellow streaks. Room 2 (HMIS location 008)	
0024C		VFT-9" x 9" Yellow w/ yellow streaks. Room 2 (HMIS location 008)	
0025A		VFT-9" x 9" Blue w/ blue streaks. Room 2 (HMIS location 008)	
0025B		VFT-9" x 9" Blue w/ blue streaks. Room 2 (HMIS location 008)	
0025C		VFT-9" x 9" Blue w/ blue streaks. Room 2 (HMIS location 008)	
0026A		VCT- 12" x 12" White w/ grey streaks. Room 4 (HMIS Location 009)	
0026B		VCT- 12" x 12" White w/ grey streaks. Room 4 (HMIS Location 009)	

Accepted

Rejected

Handwritten signature
4-23 10AM

1206832

0026C

VCT- 12" x 12" White w/ grey streaks. Room 4 (HMIS Location 009)

0027A

2'x 4' white ACT w/ long fissures Room 2 (HMIS location 008)

0027B

2'x 4' white ACT w/ long fissures Room 2 (HMIS location 008)

0027C

2'x 4' white ACT w/ long fissures Room 2 (HMIS location 008)

0028A

Drywall compound. Room 2 (HMIS location 008)

0028B

Drywall compound. Room 4 (HMIS location 009)

0028C

Drywall compound. Storage Room (HMIS location 010)

>>



Pinchin Environmental Asbestos Laboratory Certificate of Analysis

Project Name:	Durham Catholic District School Board, St. John the Evangelist, 1103 Giffard Street, Whitby ON		
Project No.:	115999		
Prepared For:	C. Moose / M. Wilson	Date Received:	November 8, 2012
Lab Reference No.:	b93813 Revised	Date Analyzed:	November 13, 2012
Analyst(s):	J. Raisch-Berkoff	# Samples submitted:	3
		# Phases analyzed:	3

Method of Analysis:

EPA 600/R-93/116 - Method for the Determination of Asbestos in Bulk Building Materials dated July, 1993

Bulk samples are checked visually and scanned under a stereomicroscope. Slides are prepared and observed under a Polarized Light Microscope (PLM) at magnifications of 40X, 100X or 400X as appropriate. Asbestos fibres are identified by a combination of morphology, colour, refractive index, extinction, sign of elongation, birefringence and dispersion staining colours. A visual estimate is made of the percentage of asbestos present. A reported concentration of less than (<) the regulatory threshold (see chart below) indicates the presence of confirmed asbestos in trace quantities, limited to only a few fibres or fibre bundles in an entire sample. This method complies with all provincial regulatory requirements (NIOSH 9002, I.R.S.S.T. 244-2). Multiple phases within a sample are analyzed and reported separately.

Provincial Jurisdiction	Regulatory Threshold	Provincial Jurisdiction	Regulatory Threshold
Ontario, British Columbia	0.5%	Manitoba	0.1% friable 1% non-friable
Quebec	0.1%	Saskatchewan	0.1% friable 1% non-friable
Alberta, NWT, Yukon, Nunavut	1%	Atlantic Provinces	1%

All bulk samples submitted to this laboratory for asbestos analysis are retained for a minimum of three months. Samples may be retrieved, upon request, for re-examination at any time during that period.

Pinchin Environmental Ltd. is accredited by the National Institute of Standards and Technology, National Voluntary Laboratory Accreditation Program (NVLAP Lab Code 101270-0) for the 'EPA-600/M4-82-020: Interim Method for the Determination of Asbestos in Bulk Insulation Samples' and meets all requirements of ISO/IEC 17025:2005.

This report relates only to the items tested.

NOTE: *This test report may not be reproduced, except in full, without the written approval of the laboratory. The client may not use this report to claim product endorsement by NVLAP or any agency of the U.S. Government. This report is valid only when signed in blue ink by the analyst. Vinyl asbestos floor tiles contain very fine fibres of asbestos and may be missed by some laboratories using the PLM method. Internal verification studies performed by Pinchin indicate that the chance of missing asbestos in floor tiles is no higher than about 2%. The vinyl tile study and laboratory documentation on measurement uncertainty is available upon request. The analysis of dust samples by PLM cannot be used as an indicator of past or present airborne asbestos fibre levels.*



**Pinchin Environmental Asbestos Laboratory
Certificate of Analysis**

Project Name: Durham Catholic District School Board,
St. John the Evangelist, 1103 Giffard Street, Whitby ON

Project No.: 115999

Prepared For: C. Moose / M. Wilson

Lab Reference No.: b93813 Revised

Date Analyzed: November 13, 2012

BULK SAMPLE ANALYSIS

SAMPLE IDENTIFICATION	SAMPLE DESCRIPTION	% COMPOSITION (VISUAL ESTIMATE)	
		ASBESTOS	OTHER
0029A Textured Plaster - Located in the Boiler Room	Homogeneous, off-white, finishing or texture coat.	None Detected	Perlite 10-25% Other Non-Fibrous > 75%
0029B Textured Plaster - Located in the Boiler Room	Homogeneous, off-white, finishing or texture coat.	None Detected	Perlite 10-25% Other Non-Fibrous > 75%
0029C Textured Plaster - Located in the Boiler Room	Homogeneous, off-white, finishing or texture coat.	None Detected	Perlite 10-25% Other Non-Fibrous > 75%
Comments:	Drywall is present on the surface of this sample.		

ANALYST



Pinchin Ltd. Asbestos Laboratory Certificate of Analysis

Project Name: DCDSB, St. John the Evangelist, 1103 Giffard Street, Whitby, ON
Project No.: 0223639.000
Prepared For: G. Gigliotti / M. Horobin

Lab Reference No.: b194934 Revised
Date Analyzed: August 21, 2018

BULK SAMPLE ANALYSIS

SAMPLE IDENTIFICATION	SAMPLE DESCRIPTION	% COMPOSITION (VISUAL ESTIMATE)	
		ASBESTOS	OTHER
0030A Plaster - Location 40 - Mechanical Room	Homogeneous, grey, hard, cementitious, plaster.	None Detected	Perlite 10-25% Other Non-Fibrous > 75%
Comments:	Cellulose is present on the surface of this sample.		
0030B Plaster - Location 40 - Mechanical Room	Homogeneous, grey, hard, cementitious, plaster.	None Detected	Perlite 10-25% Other Non-Fibrous > 75%
0030C Plaster - Location 40 - Mechanical Room	Homogeneous, grey, hard, cementitious, plaster.	None Detected	Perlite 10-25% Other Non-Fibrous > 75%
Comments:	Drywall is present on the surface of this sample.		
0031A Plaster - Location 14 - Boiler Room	Homogeneous, grey, hard, cementitious, plaster.	None Detected	Cellulose < 0.5% Non-Fibrous Material > 75%
Comments:	Cellulose is present on the surface of this sample.		
0031B Plaster - Location 14 - Boiler Room	Homogeneous, grey, hard, cementitious, plaster.	None Detected	Cellulose < 0.5% Non-Fibrous Material > 75%
Comments:	Cellulose is present on the surface of this sample.		
0031C Plaster - Location 14 - Boiler Room	Homogeneous, grey, hard, cementitious, plaster.	None Detected	Cellulose < 0.5% Non-Fibrous Material > 75%
Comments:	Drywall is present on the surface of this sample.		

Reviewed by:

Digitally signed by
Eileen Luong
Date: 2018.08.23
13:47:42 -04'00'

Reporting Analyst:

Digitally signed by
Eileen Luong
Date: 2018.08.23
13:48:04 -04'00'



Pinchin Ltd. Asbestos Laboratory Certificate of Analysis

Project Name: Durham Catholic District School Board, ON
Project No.: 0358839.000
Prepared For: C. Reynolds

Lab Reference No.: b343813
Analyst(s): H. Ainesaz / K. Cockburn

Date Received: July 30, 2025 **Samples Submitted:** 3
Date Analyzed: August 7, 2025 **Phases Analyzed:** 6

The Pinchin Ltd. Mississauga asbestos laboratory is accredited by the National Institute of Standards and Technology, National Voluntary Laboratory Accreditation Program (NVLAP Lab Code 101270-0) for the 'EPA – 40 CFR Appendix E to Subpart E of Part 763, Interim Method of the Determination of Asbestos in Bulk Insulation Samples,' and the 'EPA 600/R-93/116: Method for the Determination of Asbestos in Bulk Building Materials'; and meets all requirements of ISO/IEC 17025:2017. The Pinchin asbestos laboratory uses the aforementioned methods of analysis for all bulk materials. Please be advised that bulk materials do not include debris, dust, and tape-lift samples, and the analysis and reporting of these materials does not conform with Pinchin Ltd.'s NVLAP accreditation.

Bulk samples are checked visually and scanned under a stereomicroscope. Slides are prepared and observed under a Polarized Light Microscope (PLM) at magnifications of 40X, 100X or 400X as appropriate. Asbestos fibres are identified by a combination of morphology, colour, refractive index, extinction, sign of elongation, birefringence and dispersion staining colours. A visual estimate is made of the percentage of asbestos present. A reported concentration of less than (<) the regulatory threshold indicates the presence of confirmed asbestos in trace quantities, limited to only a few fibres or fibre bundles in an entire sample. This method complies with provincial regulatory requirements where applicable. Multiple phases within a sample are analyzed and reported separately.

All bulk samples submitted to this laboratory for asbestos analysis are retained for a minimum of three months. Samples may be retrieved, upon request, for re-examination at any time during that period.

This report relates only to the items tested.

This report relates only to the items tested and is valid only when signed with a protected, authorized, electronic signature. This report may not be reproduced, except in full, without the written approval of Pinchin Ltd. The client may not use this report to claim product endorsement by NVLAP or any agency of the U.S. Government. Internal verification studies, quality assurance / control data and laboratory documentation on measurement uncertainty are available upon request.



Pinchin Ltd. Asbestos Laboratory Certificate of Analysis

Project Name: Durham Catholic District School Board, ON
 Project No.: 0358839.000
 Prepared For: C. Reynolds

Lab Reference No.: b343813
 Date Analyzed: August 7, 2025

BULK SAMPLE ANALYSIS

SAMPLE IDENTIFICATION	SAMPLE DESCRIPTION	% COMPOSITION (VISUAL ESTIMATE)	
		ASBESTOS	OTHER
S0032A Floor, Vinyl Floor Tile And Mastic, 12" X 12" Orange, Loc:33, Classroom 118	2 Phases: a) Homogeneous, beige, consolidated, vinyl floor tile.	None Detected	Non-Fibrous Material > 75%
	b) Homogeneous, black, soft, sticky material on the back of vinyl floor tile.	None Detected	Tar and other non-fibrous > 75%
S0032B Floor, Vinyl Floor Tile And Mastic, 12" X 12" Orange, Loc:33, Classroom 118	2 Phases: a) Homogeneous, beige, consolidated, vinyl floor tile.	None Detected	Non-Fibrous Material > 75%
	b) Homogeneous, black, soft, sticky material on the back of vinyl floor tile.	None Detected	Tar and other non-fibrous > 75%
S0032C Floor, Vinyl Floor Tile And Mastic, 12" X 12" Orange, Loc:44, Classroom 113	2 Phases: a) Homogeneous, beige, consolidated, vinyl floor tile.	None Detected	Non-Fibrous Material > 75%
	b) Homogeneous, black, soft, sticky material on the back of vinyl floor tile.	None Detected	Tar and other non-fibrous > 75%

Reviewed by:

Digitally signed
by Pinchin Ltd.
Date: 2025.08.07
14:16:19-04'00'

Reporting Analyst:

Digitally signed
by Pinchin Ltd.
Date: 2025.08.07
14:16:27-04'00'

Haleh Ainesaz

Analyzed by: H.A.I.K.C. 08, 07, 2025
 Reviewed by: _____
 Report Sent by: _____

**Pinchin Ltd. - Asbestos Laboratory
 Internal Asbestos Bulk Sample Chain of Custody**

Special Instructions:

Client Name:	Durham Catholic District School Board	Project Address:	ON
Portfolio/Building No:		Pinchin File:	358839
Submitted by:	Cole Reynolds	Email:	ccreynolds@pinchin.com
CC Email:	Michael Horobin	CC Email:	mhorobin@pinchin.com
Date Submitted:	July 29 2025	Required by:	August 5 2025
# of Samples:	3	Priority:	5 Day Turnaround
Year of Building Construction (Mandatory, Years ONLY):	1955		
Do NOT Stop on Positive (Sample Numbers):			
Pinchin Group Company (Mandatory Field):	Pinchin		
HMIS2 Building Reference #:	152447/202562871221820		
To be Completed by Lab Personnel Only:	b343813		
Lab Reference #:		Time:	24 hour clock
Received by:	JUL 30 2025 H.A.I.K.C.	Date:	Month Day Year
Name(s) of Analyst(s):	H.A.I.K.C.		

Sample Prefix	Sample No.	Sample Suffix	Sample Description/Location (Mandatory)
S	0032	A	Floor, Vinyl Floor Tile And Mastic, 12" X 12" Orange, Loc:33, Classroom 118 a) N.D. b) N.D.
S	0032	B	Floor, Vinyl Floor Tile And Mastic, 12" X 12" Orange, Loc:33, Classroom 118 a) N.D. b) N.D.
S	0032	C	Floor, Vinyl Floor Tile And Mastic, 12" X 12" Orange, Loc:44, Classroom 113 a) N.D. b) N.D.

APPENDIX III
Methodology



1.0 GENERAL

Pinchin conducted an investigation of previously identified asbestos-containing materials (ACM) to evaluate the current condition of all accessible ACM identified in the most recent assessment.

The surveyor made reference to any existing assessment or abatement reports (as provided by the Client).

Materials listed as exclusions in the previous reports have remained as exclusions. Sampling, assessment or verification of excluded materials was not conducted.

Existing sampling data, where available, was reviewed and relied upon.

Where sampling was conducted, sample collection was conducted in accordance with our Standard Operating Procedures.

A separate set of samples was collected of each type of homogenous material suspected to contain asbestos. A homogenous material is defined by the US EPA as material that is uniform in texture and appearance, was installed at one time, and is unlikely to consist of more than one type or formulation of material. The homogeneous materials were determined by visual examination and available information on the phases of construction and prior renovations.

Samples were collected at a rate that is in compliance with the requirements of local regulations and guidelines. The sampling strategy was also based on known ban dates and phase out dates of the use of asbestos; sampling of certain building materials is not conducted after specific construction dates. In addition, to be conservative, several years past these dates are added to account for some uncertainty in the exact start / finish date of construction and associated usage of ACM. In some cases, manufactured products such as asbestos cement pipe were visually identified without sample confirmation.

The asbestos analysis for select materials was completed using a stop-positive approach. Only one result meeting the regulated criteria was required to determine that a material is asbestos-containing, but all samples must be analyzed to conclusively determine that a material is non-asbestos. The laboratory stopped analyzing samples from a homogeneous material once a result equal to or greater than the regulated criteria is detected in any of the samples of that material. All samples of a homogeneous material were analyzed if no asbestos is detected. In some cases, all samples were analyzed in the sample set regardless of result.

The analysis was performed in accordance with Test Method EPA/600/R-93/116: Method for the Determination of Asbestos in Bulk Building Materials, July 1993.

Analytical results were compared to the following criteria:



Jurisdiction	Friable	Non-Friable
Ontario	0.5%	0.5%

Where building materials are described in the report as “non-asbestos” or “does not contain asbestos”, this means that either no asbestos was detected by the analytical method utilized in any of the multiple samples or, if detected, it is below the lower limit of an asbestos-containing material in the applicable regulation. Additionally, these terms are used for materials which historically are known to not include asbestos in their manufacturing.

Asbestos materials are evaluated in order to make recommendations regarding remedial work. The priority for remedial action is based on several factors:

- Friability (friable or non-friable)
- Condition (good, fair, poor, debris)
- Accessibility (ranking from accessible to all building users to inaccessible)
- Visibility (whether the material is obscured by other building components)
- Efficiency of the work (for example, if damaged ACM is being removed in an area, it may be most practical to remove all ACM in the area even if it is in good condition)

For a complete description of the Evaluation Criteria and Basis of Recommendations, refer to Annex A.

Template: Methodology for Asbestos Reassessment, HAZ, November 13, 2024

METHODOLOGY ANNEX A EVALUATION CRITERIA

1.0 EVALUATION CRITERIA AND BASIS OF RECOMMENDATIONS

The detailed asbestos assessment provides information regarding the location, condition, accessibility and friability of the asbestos-containing materials (ACM). In order to make recommendations for compliance with current regulations, Pinchin developed the following criteria.

2.0 EVALUATION OF CONDITION

2.1 Friable Sprayed or Trowelled Fireproofing, Thermal Insulation and Texture Finishes (Surfacing Materials)

To evaluate the condition of ACM sprayed or trowelled on fireproofing, sprayed or trowelled thermal insulation (non-mechanical), or texture, decorative or acoustic finishes, the following criteria are applied:

Good	Surface of material shows no significant signs of damage, deterioration or delamination. Good condition includes unencapsulated or unpainted fireproofing or texture finishes, where no or limited delamination or damage is observed, or encapsulated fireproofing or texture finishes where the encapsulant or paint has been applied after the damage or fallout occurred.
Poor	A sprayed material that shows signs of significant damage or is significantly delaminating or deteriorating. This may be limited to surface delamination or some portion of the substrate may be exposed.

In Locations where damage exists in isolated areas, both good and poor condition may be applicable. The extent of each condition will be recorded. Fair condition is not utilized in the evaluation of ACM sprayed or trowelled fireproofing, sprayed or trowelled thermal insulation (non-mechanical), or texture, decorative or acoustic finishes.

The evaluation of the above products above ceilings may be limited by the number of observations and by building components such as ducts or full height walls that obstruct the above ceiling observations.

2.2 Friable Mechanical or Thermal System Insulation (TSI)

To evaluate the condition of mechanical insulation on vessels, boilers, breeching, ducts, pipes, fan units, equipment etc. the following criteria are applied:

Good	Insulation is completely covered in jacketing and exhibits no evidence of damage or deterioration. No insulation is exposed. Includes conditions where the jacketing has minor damage (i.e. scuffs or stains), but the jacketing is not penetrated.
-------------	---

Fair	Minor penetrating damage to jacketed insulation (cuts, tears, nicks, deterioration or delamination) or undamaged insulation that has never been jacketed. Insulation is exposed but not showing surface disintegration. The extent of missing insulation ranges from minor to none. Damage can be repaired.
Poor	Original insulation jacket is missing, damaged, deteriorated or delaminated. Insulation is exposed and significant areas have been dislodged. Damage cannot be readily repaired. Includes components where insulation may have been removed incompletely.

The evaluation of mechanical insulation may be limited by the number of observations made and building components such as ducts or full height walls that obstruct observations. It is often not possible to observe each foot of mechanical insulation from all angles.

2.3 Potentially Friable Materials and Miscellaneous Friable Materials

Potentially friable ACM are products that are basically non-friable while in place but have the potential to generate friable dust upon removal or if significantly disturbed without appropriate procedures. These products may become friable if damaged. Potentially friable materials include materials such as acoustic ceiling tiles and plaster. To evaluate the condition of potentially friable materials, the following criteria are applied:

Good	No significant damage or deterioration. Still serving its intended use as a building material or finish.
Fair	Showing signs of some cracking or breakage, but is not deteriorating (e.g. cracked plaster, broken but in place ceiling tile, missing tile or section of plaster etc.). The condition is such that it is still serving its intended use as a building material or finish but may require repair for mainly cosmetic purposes.
Poor	Significant deterioration or breaking apart of the material. Material has deteriorated to the point it is not serving its intended use as building material or finish. Material has deteriorated to a point it has become friable. Normally potentially friable ACM in Poor condition is not repairable and requires at least localized removal and replacement.

2.4 Non-Friable Materials

Non-friable ACM cover a wide range of products with a wide variation in their tendency to release dust or asbestos fibres to the air. Many of these materials, (particularly where the matrix is an unweathered bitumen, asphalt or tar material) do not release fibres except in very unusual circumstances or during significant disturbance (e.g. use of abrasive power tools). Others with a cementitious matrix (asbestos-cement products) can more readily release dust due to abrasion, demolition, weathering, etc. The

potential for asbestos release from non-friable ACM is always lower than from friable ACM. To evaluate the condition of non-friable Materials, the following criteria are applied:

Good	No significant damage or deterioration. Still serving its intended use as a building material or finish.
Fair	Showing signs of some cracking or breakage but is not deteriorating (e.g. cracked vinyl floor tile, missing piece of tile or transite, etc.). The condition is such that it is still serving its intended use as a building material or finish but may require repair for mainly cosmetic purposes.
Poor	Significant deterioration or breaking apart of the material to the point at which it cannot be repaired, and it will require at least local removal. Material has deteriorated to the point it is not serving its intended use as building material or finish. Material may have deteriorated to a point where traffic or disturbance may cause it to become friable.

2.5 Evaluation of ACM Debris

The identification of the exact location or presence of debris on the top of ceiling tiles is limited by the number of observations made and the presence of building components such as ducts or full height walls that obstruct observations.

The presence of fallen or dislodged ACM is noted separately from the ACM source and is referred to as Debris. Debris may be friable if from a friable ACM source or a badly deteriorated non-friable ACM source. Debris may also be non-friable (such as fallen pieces of transite sheet or mastic fittings, or broken, dislodged floor tiles).

Debris	Debris may be friable or non-friable but is always identified as “debris” as the component of an observation and quantified as Poor condition.
---------------	--

2.6 Evaluation of Presumed Asbestos-Containing Material (PACM)

Presumed asbestos-containing materials (PACM), are building materials that may contain asbestos but were not sampled or analyzed due to inaccessibility or the need to perform destructive testing to obtain a reasonable sample set. Evaluation of these materials is based on the assumption that these PACM are asbestos-containing.

A list of PACM is provided in the report and they are generally not included in the detailed room by room reports. Typically, they are excluded because they are inaccessible or present in very small quantities. If PACM are evaluated, Pinchin uses the criteria that correspond with the type (and friability) of the material listed above.

3.0 EVALUATION OF ACCESSIBILITY

The accessibility of building materials known or suspected of being ACM is rated according to the following criteria:

Access (A)	Common areas of the building within reach of all building users (approximately 8' - 9' from floor or standard ceiling height). Includes other areas where occupant activities may result in disturbance of material that is not normally within reach from floor level, but may be disturbed by common activities (e.g. gymnasiums, workshops, warehouses.)
Access (B)	Areas of the building accessed primarily by Maintenance/Caretaking/Janitorial Staff and within reach without use of a ladder. Includes areas within reach in Boiler Rooms, Electrical Rooms, Janitors Closets, Elevator Rooms, Mechanical Rooms, etc. Includes materials within reach from fixed ladders or catwalks, mezzanines, and accessible pipe chases.
Access (C) and Visible	Areas of the building above 8' - 9' where use of a ladder or scaffold is required to reach the ACM. Only includes ACM that are visible to view without the removal or opening of other building components such as ceiling tiles or service access panels.
Access (C) and not Visible / Limited Visibility	Areas of the building above 8' - 9' where use of a ladder or scaffold is required to reach the ACM. Includes ACM that are not visible or partially visible to view and require the removal of a building component to see, such as ceilings tiles or access panels to view and access. Includes rarely entered crawl spaces, attic spaces, etc. Observations will be limited to the extent visible from the access points.
Access (D)	Areas of the building behind inaccessible solid ceiling systems, walls or equipment etc. where demolition of the ceiling, wall or equipment etc. is required to reach the ACM. Material inaccessible due to height or location or is only accessed under unusual situations. Evaluation of condition and extent of ACM is limited or impossible, depending on the surveyor's ability to visually examine materials in Access D.

4.0 ACTION MATRIX AND DEFINITIONS

Pinchin's evaluation of the viability of a specific asbestos control option is based on the consideration of the friability, condition, accessibility and visibility of a material. The logic used is that damaged ACM located in an area frequently accessed by all building occupants is of a higher priority than damaged ACM located in an infrequently accessed service area. The action matrix considers the potential for fibre release (primarily from friable ACM) and the possible concerns from regulatory bodies and many building occupants to all damaged ACM (including non-friable).

In any building with asbestos, many current regulations require an Asbestos Management Program be implemented. Depending on the condition and the accessibility, more active measures such as repair or removal may be recommended. The following matrix provides guidance for recommended Actions in the absence of renovation or demolition. In the event of construction or maintenance activity which will disturb ACM more aggressive control or removal will be required.

4.1 Action Matrix

The following tables outline the action decisions based on the relationship of assessed factors. Table I applies to friable ACM. Table II applies to non-friable ACM.

Table I Decision Matrix for Friable ACM

Access	Condition			Debris
	Good	Fair	Poor	
(A)	Action 5 ¹	Action 5 ²	Action 3	Action 1
(B)	Action 7	Action 6 ³	Action 3	Action 1
(C) Visible	Action 7	Action 6	Action 3	Action 2
(C) Not Visible / Limited Visibility	Action 7	Action 7	Action 4	Action 2
(D)	Action 7	Action 7	Action 7	Action 7

Table II Decision Matrix for Potentially Friable and Non-Friable ACM

Access	Condition			Debris
	Good	Fair	Poor	
(A)	Action 7	Action 7 ⁴	Action 3	Action 1
(B)	Action 7	Action 7	Action 3	Action 1
(C) Visible	Action 7	Action 7	Action 4	Action 2
(C) Not Visible / Limited Visibility	Action 7	Action 7	Action 4	Action 2
(D)	Action 7	Action 7	Action 7	Action 7

¹ If friable ACM in access (A)/Good condition is not proactively removed Action 7 (Manage) is recommended.

² If friable ACM in access (A)/Fair condition is not proactively removed repair is recommended.

³ If friable ACM in access (B)/Fair condition is likely to be disturbed after repair proactive removal is recommended.

⁴ Action 7 is recommended for all non-friable ACM in Fair condition however some clients may wish to repair or take some action primarily for cosmetic reasons

4.2 Action Definitions

The following are the definitions in the Action Matrix Table presented above:

Action Definitions	
Action 1	Clean-Up of ACM Debris Restrict access that is likely to cause a disturbance of the ACM Debris and clean up ACM Debris. Utilize appropriate asbestos precautions.
Action 2	Precautions for Access Which may Disturb ACM Debris Use appropriate means to isolate the debris or to limit entry to the area which may disturb the material. At locations where ACM Debris can remain in place in lieu of removal or clean-up (e.g. Debris on top of ceiling tiles or behind lockable door), Utilize appropriate asbestos precautions to enter the area if this will disturb debris. The precautions will be required until the ACM Debris has been cleaned up.
Action 3	ACM Removal Remove ACM. Utilize asbestos procedures appropriate to the scope of the removal work. Until it is removed, restrict access to the material so it is not disturbed.
Action 4	Precautions for Work Which may Disturb ACM in Poor Condition. Utilize appropriate asbestos precautions if ACM may be disturbed by work on or near ACM. This does not require restricting access to the area, only control of work which may contact or disturb the ACM. Removal is the only viable option if work will disturb ACM.
Action 5	Proactive ACM Removal Remove friable ACM where the presence of friable asbestos in Good condition is not desirable. If friable ACM in Fair condition is not removed, then Repair friable ACM.
Action 6	ACM Repair Repair friable ACM in Fair condition which is not likely to be damaged again or disturbed by normal use of the area or room. Pinchin recommends proactive removal if friable ACM is likely to be damaged or disturbed during normal use of the area or room.
Action 7	Asbestos Management Program with Routine Surveillance Implement an Asbestos Management Program, including routine surveillance of ACM. Reassess materials regularly (typically once per year).

Master Template: Methodology Annex A to Appendix I Evaluation Criteria, HAZ, April 3, 2024

APPENDIX IV
Location Summary Report

Client: Durham Catholic District School Board

Site: 1103 Giffard Street, Whitby, ON

Building Name: St. John the Evangelist Catholic Element

Survey Date:

Last Re-Assessment: 2025-07-29

Building Phases: A: 1955

Location No.	Name or Description	Area ft ²	Floor No.	Bldg. Phase	Notes
1	Gym, room no. N/A	2864	NA	A	Vermiculite insulation presumed within the block walls. Asbestos-containing floor tile on stage only.
2	Gym Storage, room no. N/A	144	NA	A	No access above ceiling room too crowded.
3	Corridor, room no. N/A	384	NA	A	
4	Room 1, room no. N/A	865	NA	A	
5	Room 3, room no. N/A	865	NA	A	
6	Storage, room no. N/A	265	NA	A	
7	Room 5, room no. N/A	865	NA	A	
8	Room 2, room no. N/A	1000	NA	A	
9	Room 4, room no. N/A	1000	NA	A	New VCT
11	Room 6, room no. N/A	500	NA	A	
12	Men's Washroom (Boys), room no. N/A	310	NA	A	No access above drywall ceiling. Ceiling tile date stamp 2002.
13	Janitor's Closet, room no. N/A	60	NA	A	Roof access.
14	Custodian/Electrical, room no. N/A	336	NA	A	
15	Girls W.R., room no. N/A	300	NA	A	Ceiling tile date stamp 2003.
16	Staff Room, room no. NA	650	NA	A	New VCT - 2010.
17	Teachers Work Room, room no. N/A	260	NA	A	
18	Staff Washroom, room no. N/A	72	NA	A	Ceiling tile, date stamp 1999.
19	Main Office, Principal, Office, room no. N/A	552	NA	A	
20	Corridor, room no. N/A	656	NA	A	
21	Corridor, room no. N/A	660	NA	A	Fiberglass batts between JST's.
22	Vestibule, room no. N/A	64	NA	A	No Access above ceiling.
23	Corridor, room no. N/A	130	NA	A	Ceiling date stamp 2000.
24	Library, room no. N/A	1825	NA	A	
25	Corridor, room no. N/A	748	NA	A	Layer of clear plastic above ceiling tiles over fiberglass batts & pipes.
26	Classroom 103, room no. N/A	805	NA	A	F2: off-white with grey smugde
27	Classroom 105, room no. N/A	840	NA	A	
28	Classroom 107, room no. N/A	840	NA	A	
29	Classroom 109, room no. N/A	840	NA	A	
30	Offices, room no. CR02	420	NA	A	
31	Physiotherapy Room, room no. CMP1	395	NA	A	
32	Classroom 116, room no. R012	600	NA	A	
33	Classroom 118, room no. R013	600	NA	A	
34	Classroom 120, room no. R014	800	NA	A	
35	Classroom 132, room no. R015	800	NA	A	Newly installed vinyl floor tile.
36	Classroom 119, room no. R016	896	NA	A	
37	Classroom 117, room no. R017	896	NA	A	
38	Boys W.R., room no. N/A	240	NA	A	
39	Girls W.R., room no. N/A	240	NA	A	
40	Boiler Room, room no. N/A	400	NA	A	
41	Storage Room, room no. N/A	200	NA	A	
42	Janitors Closet, room no. N/A	90	NA	A	Roof access.
43	Classroom 115, room no. R018	896	NA	A	
44	Classroom 113, room no. R019	784	NA	A	
45	Program Support Office, room no. N/A	640	NA	A	
46	Corridor, room no. N/A	1900	NA	A	One ceiling tile sample collected during 1990 survey found not to contain asbestos.
47	Exterior, room no. N/A	0	NA	A	

APPENDIX V
Confirmed / Presumed ACM Report

CONFIRMED AND PRESUMED HAZARDOUS MATERIALS REPORT

Client: Durham Catholic District School Board

Site: 1103 Giffard Street, Whitby, ON

Building Name: 1103 : St. John the Evangelist Catholic Element

Location: #1 : Gym

Floor: NA

Room #: N/A

Area (sqft): 2864

Survey Date: 2025-07-28

Last Re-Assessment: 2025-07-29

ASBESTOS																
System	Component	Material	Item	Covering	A*	V*	AP*	Good	Fair	Poor	Unit	Sample	Asbestos Type	Amount	Hazard	Friable
Floor ¹		Vinyl Floor Tile and Mastic, 12 x 12 off-white with brown streaks	Not Applicable		A	Y		464(7)			SF	V0020	Chrysotile	5-10%	Confirmed Asbestos	NF
Wall		Vermiculite/concrete block walls			D	N		1250(7)			SF	V9500	Presumed Asbestos		Presumed Asbestos	F

Vermiculite insulation presumed within the block walls. Asbestos-containing floor tile on stage only.

1 - Stage floor, Mastic is presumed to contain asbestos

Client: Durham Catholic District School Board

Site: 1103 Giffard Street, Whitby, ON

Building Name: 1103 : St. John the Evangelist Catholic Element

Location: #2 : Gym Storage

Floor: NA

Room #: N/A

Area (sqft): 144

Survey Date: 2025-07-28

Last Re-Assessment: 2025-07-29

ASBESTOS																
System	Component	Material	Item	Covering	A*	V*	AP*	Good	Fair	Poor	Unit	Sample	Asbestos Type	Amount	Hazard	Friable
Floor	N/a	Terrazzo	Not Applicable		A	Y		144(7)			SF	V9500	Presumed Asbestos		Presumed Asbestos	NF
Wall		Vermiculite/concrete block walls			D	N		500(7)			SF	V9500	Presumed Asbestos		Presumed Asbestos	F

No access above ceiling room too crowded.

CONFIRMED AND PRESUMED HAZARDOUS MATERIALS REPORT

Client: Durham Catholic District School Board

Site: 1103 Giffard Street, Whitby, ON

Building Name: 1103 : St. John the Evangelist Catholic Element

Location: #3 : Corridor

Floor: NA

Room #: N/A

Area (sqft): 384

Survey Date: 2025-07-28

Last Re-Assessment: 2025-07-29

ASBESTOS																
System	Component	Material	Item	Covering	A*	V*	AP*	Good	Fair	Poor	Unit	Sample	Asbestos Type	Amount	Hazard	Friable
Floor		Terrazzo	Not Applicable		A	Y		384(7)			SF	V9500	Presumed Asbestos		Presumed Asbestos	NF
Wall		Vermiculite/concrete block walls			D	N		1000(7)			SF	V9500	Presumed Asbestos		Presumed Asbestos	F

Client: Durham Catholic District School Board

Site: 1103 Giffard Street, Whitby, ON

Building Name: 1103 : St. John the Evangelist Catholic Element

Location: #4 : Room 1

Floor: NA

Room #: N/A

Area (sqft): 865

Survey Date: 2025-07-28

Last Re-Assessment: 2025-07-29

ASBESTOS																
System	Component	Material	Item	Covering	A*	V*	AP*	Good	Fair	Poor	Unit	Sample	Asbestos Type	Amount	Hazard	Friable
Floor ¹		Vinyl Floor Tile and Mastic, 9 x 9 red with white streaks	Not Applicable		A	Y		400(7)			SF	S0018	Chrysotile	5-10%	Confirmed Asbestos	NF
Floor ²		Vinyl Floor Tile and Mastic, 9 x 9 grey with black streaks			A	Y		465(7)			SF	S0017	Chrysotile	5-10%	Confirmed Asbestos	NF
Wall		Vermiculite/concrete block walls			D	N		300(7)			SF	V9500	Presumed Asbestos		Presumed Asbestos	F

1 - Mastic is presumed to contain asbestos

2 - Mastic is presumed to contain asbestos

CONFIRMED AND PRESUMED HAZARDOUS MATERIALS REPORT

Client: Durham Catholic District School Board

Site: 1103 Giffard Street, Whitby, ON

Building Name: 1103 : St. John the Evangelist
Catholic Element

Location: #5 : Room 3

Floor: NA

Room #: N/A

Area (sqft): 865

Survey Date: 2025-07-28

Last Re-Assessment: 2025-07-29

ASBESTOS																
System	Component	Material	Item	Covering	A*	V*	AP*	Good	Fair	Poor	Unit	Sample	Asbestos Type	Amount	Hazard	Friable
Floor ¹		Vinyl Floor Tile and Mastic, 9 x 9 red with dark red streaks	Not Applicable		A	Y		465(7)			SF	S0021	Chrysotile	5-10%	Confirmed Asbestos	NF
Floor ²		Vinyl Floor Tile and Mastic, 9 x 9 beige with white streaks			A	Y		400(7)			SF	V0002	Chrysotile	5-10%	Confirmed Asbestos	NF
Wall		Vermiculite/concrete block walls			D	N		300(7)			SF	V9500	Presumed Asbestos		Presumed Asbestos	F

1 - Mastic is presumed to contain asbestos

2 - Mastic is presumed to contain asbestos

Client: Durham Catholic District School Board

Site: 1103 Giffard Street, Whitby, ON

Building Name: 1103 : St. John the Evangelist
Catholic Element

Location: #6 : Storage

Floor: NA

Room #: N/A

Area (sqft): 265

Survey Date: 2025-07-28

Last Re-Assessment: 2025-07-29

ASBESTOS																
System	Component	Material	Item	Covering	A*	V*	AP*	Good	Fair	Poor	Unit	Sample	Asbestos Type	Amount	Hazard	Friable
Floor ¹		Vinyl Floor Tile and Mastic, 12 x 12 tan with white and brown flecks	Not Applicable		A	Y		265(7)			SF	V0010	Chrysotile	0.5-5%	Confirmed Asbestos	NF
Wall		Vermiculite/concrete block walls			D	N		50(7)			SF	V9500	Presumed Asbestos		Presumed Asbestos	F
Wall	N/a	Drywall and joint compound	Not Applicable		A	Y		200(7)			SF	V0028	Chrysotile	0.5-5%	Confirmed Asbestos	NF

1 - Mastic is presumed to contain asbestos

CONFIRMED AND PRESUMED HAZARDOUS MATERIALS REPORT

Client: Durham Catholic District School Board

Site: 1103 Giffard Street, Whitby, ON

Building Name: 1103 : St. John the Evangelist Catholic Element

Location: #7 : Room 5

Floor: NA

Room #: N/A

Area (sqft): 865

Survey Date: 2025-07-28

Last Re-Assessment: 2025-07-29

ASBESTOS																
System	Component	Material	Item	Covering	A*	V*	AP*	Good	Fair	Poor	Unit	Sample	Asbestos Type	Amount	Hazard	Friable
Floor ¹		Vinyl Floor Tile and Mastic, 12 x 12 tan with white and brown flecks	Not Applicable		A	Y		865(7)			SF	S0003	Chrysotile	0.5-5%	Confirmed Asbestos	NF
Wall		Vermiculite/concrete block walls			D	N		300(7)			SF	V9500	Presumed Asbestos		Presumed Asbestos	F

1 - Mastic is presumed to contain asbestos

Client: Durham Catholic District School Board

Site: 1103 Giffard Street, Whitby, ON

Building Name: 1103 : St. John the Evangelist Catholic Element

Location: #8 : Room 2

Floor: NA

Room #: N/A

Area (sqft): 1115

Survey Date: 2025-07-28

Last Re-Assessment: 2025-07-29

ASBESTOS																
System	Component	Material	Item	Covering	A*	V*	AP*	Good	Fair	Poor	Unit	Sample	Asbestos Type	Amount	Hazard	Friable
Floor ¹		Vinyl Floor Tile and Mastic, 12 x 12 orange brown	Not Applicable		A	Y		865(7)			SF	V0019	Chrysotile	0.5-5%	Confirmed Asbestos	NF
Floor ²		Mortar		Ceramic Tiles	D	N		250(7)			SF	V9500	Presumed Asbestos		Presumed Asbestos	NF
Wall		Vermiculite/concrete block walls			D	N		600(7)			SF	V9500	Presumed Asbestos		Presumed Asbestos	F

1 - Mastic is confirmed to contain asbestos

2 - Renovated space

CONFIRMED AND PRESUMED HAZARDOUS MATERIALS REPORT

Client: Durham Catholic District School Board

Site: 1103 Giffard Street, Whitby, ON

Building Name: 1103 : St. John the Evangelist Catholic Element

Location: #9 : Room 4

Floor: NA

Room #: N/A

Area (sqft): 1215

Survey Date: 2025-07-28

Last Re-Assessment: 2025-07-29

ASBESTOS																
System	Component	Material	Item	Covering	A*	V*	AP*	Good	Fair	Poor	Unit	Sample	Asbestos Type	Amount	Hazard	Friable
Floor ¹		Vinyl Floor Tile and Mastic, 12 x 12 orange brown	Not Applicable		A	Y		865(7)			SF	V0019	Chrysotile	0.5-5%	Confirmed Asbestos	NF
Floor		Mortar		Ceramic Tiles	D	N		350(7)			SF	V9500	Presumed Asbestos		Presumed Asbestos	NF
Wall		Vermiculite/concrete block walls			D	N		400(7)			SF	V9500	Presumed Asbestos		Presumed Asbestos	F

New VCT

1 - Mastic is confirmed to contain asbestos

Client: Durham Catholic District School Board

Site: 1103 Giffard Street, Whitby, ON

Building Name: 1103 : St. John the Evangelist Catholic Element

Location: #11 : Room 6

Floor: NA

Room #: N/A

Area (sqft): 500

Survey Date: 2025-07-28

Last Re-Assessment: 2025-07-29

ASBESTOS																
System	Component	Material	Item	Covering	A*	V*	AP*	Good	Fair	Poor	Unit	Sample	Asbestos Type	Amount	Hazard	Friable
Floor ¹		Vinyl Floor Tile and Mastic, 12 x 12 mottled beige	Not Applicable		A	Y		500(7)			SF	S0003	Chrysotile	0.5-5%	Confirmed Asbestos	NF
Wall		Vermiculite/concrete block walls			D	N		300(7)			SF	V9500	Presumed Asbestos		Presumed Asbestos	F

1 - Mastic is presumed to contain asbestos

CONFIRMED AND PRESUMED HAZARDOUS MATERIALS REPORT

Client: Durham Catholic District School Board

Site: 1103 Giffard Street, Whitby, ON

Building Name: 1103 : St. John the Evangelist
Catholic Element

Location: #12 : Men's Washroom (Boys)

Floor: NA

Room #: N/A

Area (sqft): 310

Survey Date: 2025-07-28

Last Re-Assessment: 2025-07-29

ASBESTOS																
System	Component	Material	Item	Covering	A*	V*	AP*	Good	Fair	Poor	Unit	Sample	Asbestos Type	Amount	Hazard	Friable
Ceiling		Drywall and joint compound	Not Applicable		C	Y		80(7)			SF	V0028	Chrysotile	0.5-5%	Confirmed Asbestos	NF
Floor		Terrazzo	Not Applicable		A	Y		310(7)			SF	V9500	Presumed Asbestos		Presumed Asbestos	NF
Wall		Mortar		Ceramic Tiles	D	N		500(7)			SF	V9500	Presumed Asbestos		Presumed Asbestos	NF
Wall		Vermiculite/concrete block walls			D	N		300(7)			SF	V9500	Presumed Asbestos		Presumed Asbestos	F

No access above drywall ceiling. Ceiling tile date stamp 2002.

Client: Durham Catholic District School Board

Site: 1103 Giffard Street, Whitby, ON

Building Name: 1103 : St. John the Evangelist
Catholic Element

Location: #14 : Custodian/Electrical

Floor: NA

Room #: N/A

Area (sqft): 336

Survey Date: 2025-07-28

Last Re-Assessment: 2025-07-29

ASBESTOS																
System	Component	Material	Item	Covering	A*	V*	AP*	Good	Fair	Poor	Unit	Sample	Asbestos Type	Amount	Hazard	Friable
Wall		Vermiculite/concrete block walls			D	N		300(7)			SF	V9500	Presumed Asbestos		Presumed Asbestos	F

CONFIRMED AND PRESUMED HAZARDOUS MATERIALS REPORT

Client: Durham Catholic District School Board

Site: 1103 Giffard Street, Whitby, ON

Building Name: 1103 : St. John the Evangelist Catholic Element

Location: #15 : Girls W.R.

Floor: NA

Room #: N/A

Area (sqft): 300

Survey Date: 2025-07-28

Last Re-Assessment: 2025-07-29

ASBESTOS																
System	Component	Material	Item	Covering	A*	V*	AP*	Good	Fair	Poor	Unit	Sample	Asbestos Type	Amount	Hazard	Friable
Ceiling		Drywall and joint compound	Not Applicable		C	Y		300(7)			SF	V0028	Chrysotile	0.5-5%	Confirmed Asbestos	NF
Floor	N/a	Terrazzo	Not Applicable		A	Y		300(7)			SF	V9500	Presumed Asbestos		Presumed Asbestos	NF
Wall		Mortar	Not Applicable	Ceramic Tiles	D	N		300(7)			SF	V9500	Presumed Asbestos		Presumed Asbestos	NF
Wall		Vermiculite/concrete block walls			D	N		3000(7)			SF	V9500	Presumed Asbestos		Presumed Asbestos	F

Ceiling tile date stamp 2003.

Client: Durham Catholic District School Board

Site: 1103 Giffard Street, Whitby, ON

Building Name: 1103 : St. John the Evangelist Catholic Element

Location: #16 : Staff Room

Floor: NA

Room #: NA

Area (sqft): 650

Survey Date: 2025-07-28

Last Re-Assessment: 2025-07-29

ASBESTOS																
System	Component	Material	Item	Covering	A*	V*	AP*	Good	Fair	Poor	Unit	Sample	Asbestos Type	Amount	Hazard	Friable
Ceiling	N/a	Drywall and joint compound	Surface		C	Y		200(7)			SF	V0028	Chrysotile	0.5-5%	Confirmed Asbestos	NF
Wall		Vermiculite/concrete block walls			D	N		400(7)			SF	V9500	Presumed Asbestos		Presumed Asbestos	F
Wall	N/a	Drywall and joint compound	Not Applicable		A	Y		100(7)			SF	V0028	Chrysotile	0.5-5%	Confirmed Asbestos	NF

New VCT - 2010.

CONFIRMED AND PRESUMED HAZARDOUS MATERIALS REPORT

Client: Durham Catholic District School Board

Site: 1103 Giffard Street, Whitby, ON

Building Name: 1103 : St. John the Evangelist Catholic Element

Location: #17 : Teachers Work Room

Floor: NA

Room #: N/A

Area (sqft): 260

Survey Date: 2025-07-28

Last Re-Assessment: 2025-07-29

ASBESTOS																
System	Component	Material	Item	Covering	A*	V*	AP*	Good	Fair	Poor	Unit	Sample	Asbestos Type	Amount	Hazard	Friable
Ceiling		Drywall and joint compound	Not Applicable		C	Y		110(7)			SF	V0028	Chrysotile	0.5-5%	Confirmed Asbestos	NF
Floor ¹		Vinyl Floor Tile and Mastic, 12 x 12 tan with white and brown flecks	Surface		A	Y		260(7)			SF	V0003	Chrysotile	0.5-5%	Confirmed Asbestos	NF
Wall		Vermiculite/concrete block walls			D	N		200(7)			SF	V9500	Presumed Asbestos		Presumed Asbestos	F
Wall	N/a	Drywall and joint compound	Not Applicable		A	Y		100(7)			SF	V0028	Chrysotile	0.5-5%	Confirmed Asbestos	NF

1 - Mastic is presumed to contain asbestos

Client: Durham Catholic District School Board

Site: 1103 Giffard Street, Whitby, ON

Building Name: 1103 : St. John the Evangelist Catholic Element

Location: #18 : Staff Washroom

Floor: NA

Room #: N/A

Area (sqft): 72

Survey Date: 2025-07-28

Last Re-Assessment: 2025-07-29

ASBESTOS																
System	Component	Material	Item	Covering	A*	V*	AP*	Good	Fair	Poor	Unit	Sample	Asbestos Type	Amount	Hazard	Friable
Floor	N/a	Mortar	Not Applicable	Ceramic Tiles	D	N		72(7)			SF	V9500	Presumed Asbestos		Presumed Asbestos	NF
Wall	N/a	Drywall and joint compound	Not Applicable		A	Y		72(7)			SF	V0028	Chrysotile	0.5-5%	Confirmed Asbestos	NF

Ceiling tile, date stamp 1999.

CONFIRMED AND PRESUMED HAZARDOUS MATERIALS REPORT

Client: Durham Catholic District School Board

Site: 1103 Giffard Street, Whitby, ON

Building Name: 1103 : St. John the Evangelist
Catholic Element

Location: #19 : Main Office, Principal, Office

Floor: NA

Room #: N/A

Area (sqft): 552

Survey Date: 2025-07-28

Last Re-Assessment: 2025-07-29

ASBESTOS																
System	Component	Material	Item	Covering	A*	V*	AP*	Good	Fair	Poor	Unit	Sample	Asbestos Type	Amount	Hazard	Friable
Floor		Mortar		Ceramic Tiles	D	N		500(7)			SF	V9500	Presumed Asbestos		Presumed Asbestos	NF
Wall		Drywall and joint compound	Not Applicable		A	Y		100(7)			SF	V0028	Chrysotile	0.5-5%	Confirmed Asbestos	NF
Wall		Vermiculite/concrete block walls			D	N		200(7)			SF	V9500	Presumed Asbestos		Presumed Asbestos	F

Client: Durham Catholic District School Board

Site: 1103 Giffard Street, Whitby, ON

Building Name: 1103 : St. John the Evangelist
Catholic Element

Location: #20 : Corridor

Floor: NA

Room #: N/A

Area (sqft): 656

Survey Date: 2025-07-28

Last Re-Assessment: 2025-07-29

ASBESTOS																
System	Component	Material	Item	Covering	A*	V*	AP*	Good	Fair	Poor	Unit	Sample	Asbestos Type	Amount	Hazard	Friable
Floor		Terrazzo	Not Applicable		A	Y		656(7)				V9500	Presumed Asbestos		Presumed Asbestos	NF

CONFIRMED AND PRESUMED HAZARDOUS MATERIALS REPORT

Client: Durham Catholic District School Board

Site: 1103 Giffard Street, Whitby, ON

Building Name: 1103 : St. John the Evangelist Catholic Element

Location: #21 : Corridor

Floor: NA

Room #: N/A

Area (sqft): 660

Survey Date: 2025-07-28

Last Re-Assessment: 2025-07-29

ASBESTOS																
System	Component	Material	Item	Covering	A*	V*	AP*	Good	Fair	Poor	Unit	Sample	Asbestos Type	Amount	Hazard	Friable
Floor	N/a	Terrazzo	Not Applicable		A	Y		660(7)			SF	V9500	Presumed Asbestos		Presumed Asbestos	NF

Fiberglass batts between JST's.

Client: Durham Catholic District School Board

Site: 1103 Giffard Street, Whitby, ON

Building Name: 1103 : St. John the Evangelist Catholic Element

Location: #22 : Vestibule

Floor: NA

Room #: N/A

Area (sqft): 64

Survey Date: 2025-07-28

Last Re-Assessment: 2025-07-29

ASBESTOS																
System	Component	Material	Item	Covering	A*	V*	AP*	Good	Fair	Poor	Unit	Sample	Asbestos Type	Amount	Hazard	Friable
Ceiling		Drywall and joint compound	Not Applicable		C	Y		64(7)			SF	V0028	Chrysotile	0.5-5%	Confirmed Asbestos	NF
Floor	N/a	Mortar	Not Applicable	Ceramic Tiles	D	N		65(7)			SF	V9500	Presumed Asbestos		Presumed Asbestos	NF
Wall		Vermiculite/concrete block walls			D	N		50(7)			SF	V9500	Presumed Asbestos		Presumed Asbestos	F

No Access above ceiling.

CONFIRMED AND PRESUMED HAZARDOUS MATERIALS REPORT

Client: Durham Catholic District School Board

Site: 1103 Giffard Street, Whitby, ON

Building Name: 1103 : St. John the Evangelist Catholic Element

Location: #23 : Corridor

Floor: NA

Room #: N/A

Area (sqft): 130

Survey Date: 2025-07-28

Last Re-Assessment: 2025-07-29

ASBESTOS																
System	Component	Material	Item	Covering	A*	V*	AP*	Good	Fair	Poor	Unit	Sample	Asbestos Type	Amount	Hazard	Friable
Floor	N/a	Terrazzo	Not Applicable		A	Y		130(7)			SF	V9500	Presumed Asbestos		Presumed Asbestos	NF

Ceiling date stamp 2000.

Client: Durham Catholic District School Board

Site: 1103 Giffard Street, Whitby, ON

Building Name: 1103 : St. John the Evangelist Catholic Element

Location: #24 : Library

Floor: NA

Room #: N/A

Area (sqft): 1825

Survey Date: 2025-07-28

Last Re-Assessment: 2025-07-29

ASBESTOS																
System	Component	Material	Item	Covering	A*	V*	AP*	Good	Fair	Poor	Unit	Sample	Asbestos Type	Amount	Hazard	Friable
Ceiling	N/a	Drywall and joint compound	Not Applicable		C	Y		260(7)			SF	V0028	Chrysotile	0.5-5%	Confirmed Asbestos	NF
Wall		Vermiculite/concrete block walls			D	N		600(7)			SF	V9500	Presumed Asbestos		Presumed Asbestos	F
Wall	N/a	Drywall and joint compound	Not Applicable		A	Y		100(7)			SF	V0028	Chrysotile	0.5-5%	Confirmed Asbestos	NF

CONFIRMED AND PRESUMED HAZARDOUS MATERIALS REPORT

Client: Durham Catholic District School Board

Site: 1103 Giffard Street, Whitby, ON

Building Name: 1103 : St. John the Evangelist Catholic Element

Location: #25 : Corridor

Floor: NA

Room #: N/A

Area (sqft): 748

Survey Date: 2025-07-28

Last Re-Assessment: 2025-07-29

ASBESTOS																
System	Component	Material	Item	Covering	A*	V*	AP*	Good	Fair	Poor	Unit	Sample	Asbestos Type	Amount	Hazard	Friable
Ceiling	N/a	Drywall and joint compound	Not Applicable		C	Y		120(7)			SF	V0028	Chrysotile	0.5-5%	Confirmed Asbestos	NF
Floor		Terrazzo	Not Applicable		A	Y		740(7)			SF	V9500	Presumed Asbestos		Presumed Asbestos	NF
Floor		Mortar	Not Applicable	Ceramic Tiles	D	N		8(7)			SF	V9500	Presumed Asbestos		Presumed Asbestos	NF
Wall		Vermiculite/concrete block walls			D	N		600(7)			SF	V9500	Presumed Asbestos		Presumed Asbestos	F

Layer of clear plastic above ceiling tiles over fiberglass batts & pipes.

Client: Durham Catholic District School Board

Site: 1103 Giffard Street, Whitby, ON

Building Name: 1103 : St. John the Evangelist Catholic Element

Location: #26 : Classroom 103

Floor: NA

Room #: N/A

Area (sqft): 805

Survey Date: 2025-07-28

Last Re-Assessment: 2025-07-29

ASBESTOS																
System	Component	Material	Item	Covering	A*	V*	AP*	Good	Fair	Poor	Unit	Sample	Asbestos Type	Amount	Hazard	Friable
Floor ¹		Vinyl Floor Tile and Mastic, 12 x 12 tan with white and brown flecks	Not Applicable		A	Y		801(7)			SF	S0010	Chrysotile	0.5-5%	Confirmed Asbestos	NF
Wall		Vermiculite/concrete block walls			D	N		400(7)			SF	V9500	Presumed Asbestos		Presumed Asbestos	F
Wall	N/a	Drywall and joint compound	Surface		A	Y		20(7)			SF	V0028	Chrysotile	0.5-5%	Confirmed Asbestos	NF

F2: off-white with grey smudge

1 - Mastic is presumed to contain asbestos

CONFIRMED AND PRESUMED HAZARDOUS MATERIALS REPORT

Client: Durham Catholic District School Board

Site: 1103 Giffard Street, Whitby, ON

Building Name: 1103 : St. John the Evangelist Catholic Element

Location: #27 : Classroom 105

Floor: NA

Room #: N/A

Area (sqft): 840

Survey Date: 2025-07-28

Last Re-Assessment: 2025-07-29

ASBESTOS																
System	Component	Material	Item	Covering	A*	V*	AP*	Good	Fair	Poor	Unit	Sample	Asbestos Type	Amount	Hazard	Friable
Floor ¹		Vinyl Floor Tile and Mastic, 12 x 12 orange	Not Applicable		A	Y		820(7)			SF	S0019	Chrysotile	0.5-5%	Confirmed Asbestos	NF
Floor ²		Vinyl Floor Tile and Mastic, 12 x 12 beige with white mottle			C	Y		20(7)			SF	V9500	Presumed Asbestos		Presumed Asbestos	NF
Wall		Vermiculite/concrete block walls			C	N		200(7)			SF	V9500	Presumed Asbestos		Presumed Asbestos	F
Wall	N/a	Drywall and joint compound	Not Applicable		A	Y		110(7)			SF	V0028	Chrysotile	0.5-5%	Confirmed Asbestos	NF

1 - Mastic is confirmed to contain asbestos

2 - Mastic is presumed to contain asbestos

Client: Durham Catholic District School Board

Site: 1103 Giffard Street, Whitby, ON

Building Name: 1103 : St. John the Evangelist Catholic Element

Location: #28 : Classroom 107

Floor: NA

Room #: N/A

Area (sqft): 840

Survey Date: 2025-07-28

Last Re-Assessment: 2025-07-29

ASBESTOS																
System	Component	Material	Item	Covering	A*	V*	AP*	Good	Fair	Poor	Unit	Sample	Asbestos Type	Amount	Hazard	Friable
Ceiling	N/a	Drywall and joint compound	Surface		C	Y		100(7)			SF	V0028	Chrysotile	0.5-5%	Confirmed Asbestos	NF
Floor ¹		Vinyl Floor Tile and Mastic, 12 x 12 tan with white and brown flecks	Not Applicable		A	Y		840(7)			SF	V0003	Chrysotile	0.5-5%	Confirmed Asbestos	NF
Wall		Vermiculite/concrete block walls			D	N		200(7)			SF	V9500	Presumed Asbestos		Presumed Asbestos	F
Wall	N/a	Drywall and joint compound	Not Applicable		A	Y		100(7)			SF	V0028	Chrysotile	0.5-5%	Confirmed Asbestos	NF

1 - Mastic is presumed to contain asbestos

CONFIRMED AND PRESUMED HAZARDOUS MATERIALS REPORT

Client: Durham Catholic District School Board

Site: 1103 Giffard Street, Whitby, ON

Building Name: 1103 : St. John the Evangelist Catholic Element

Location: #29 : Classroom 109

Floor: NA

Room #: N/A

Area (sqft): 840

Survey Date: 2025-07-28

Last Re-Assessment: 2025-07-29

ASBESTOS																
System	Component	Material	Item	Covering	A*	V*	AP*	Good	Fair	Poor	Unit	Sample	Asbestos Type	Amount	Hazard	Friable
Ceiling		Drywall and joint compound	Surface		C	Y		100(7)			SF	V0028	Chrysotile	0.5-5%	Confirmed Asbestos	NF
Floor ¹		Vinyl Floor Tile and Mastic, 12 x 12 tan with white and brown flecks	Not Applicable		A	Y		840(7)			SF	V0003	Chrysotile	0.5-5%	Confirmed Asbestos	NF
Wall		Vermiculite/concrete block walls			D	N		200(7)			SF	V9500	Presumed Asbestos		Presumed Asbestos	F
Wall	N/a	Drywall and joint compound	Not Applicable		A	Y		100(7)			SF	V0028	Chrysotile	0.5-5%	Confirmed Asbestos	NF

1 - Mastic is presumed to contain asbestos

Client: Durham Catholic District School Board

Site: 1103 Giffard Street, Whitby, ON

Building Name: 1103 : St. John the Evangelist Catholic Element

Location: #30 : Offices

Floor: NA

Room #: CR02

Area (sqft): 420

Survey Date: 2025-07-28

Last Re-Assessment: 2025-07-29

ASBESTOS																
System	Component	Material	Item	Covering	A*	V*	AP*	Good	Fair	Poor	Unit	Sample	Asbestos Type	Amount	Hazard	Friable
Wall ¹		Vermiculite/concrete block walls			D	N		400(7)			SF	V9000	Confirmed Asbestos		Confirmed Asbestos	F

1 - Vermiculite found in 2012 by client, confirmed to be asbestos containing

CONFIRMED AND PRESUMED HAZARDOUS MATERIALS REPORT

Client: Durham Catholic District School Board

Site: 1103 Giffard Street, Whitby, ON

Building Name: 1103 : St. John the Evangelist
Catholic Element

Location: #31 : Physiotherapy Room

Floor: NA

Room #: CMP1

Area (sqft): 395

Survey Date: 2025-07-28

Last Re-Assessment: 2025-07-29

ASBESTOS																
System	Component	Material	Item	Covering	A*	V*	AP*	Good	Fair	Poor	Unit	Sample	Asbestos Type	Amount	Hazard	Friable
Wall		Drywall and joint compound	Not Applicable		A	Y		400(7)			SF	V0028	Chrysotile	0.5-5%	Confirmed Asbestos	NF
Wall		Vermiculite/concrete block walls			D	N		200(7)			SF	V9500	Presumed Asbestos		Presumed Asbestos	F

Client: Durham Catholic District School Board

Site: 1103 Giffard Street, Whitby, ON

Building Name: 1103 : St. John the Evangelist
Catholic Element

Location: #32 : Classroom 116

Floor: NA

Room #: R012

Area (sqft): 600

Survey Date: 2025-07-28

Last Re-Assessment: 2025-07-29

ASBESTOS																
System	Component	Material	Item	Covering	A*	V*	AP*	Good	Fair	Poor	Unit	Sample	Asbestos Type	Amount	Hazard	Friable
Wall		Vermiculite/concrete block walls			D	N		400(7)			SF	V9500	Presumed Asbestos		Presumed Asbestos	F

CONFIRMED AND PRESUMED HAZARDOUS MATERIALS REPORT

Client: Durham Catholic District School Board

Site: 1103 Giffard Street, Whitby, ON

Building Name: 1103 : St. John the Evangelist
Catholic Element

Location: #33 : Classroom 118

Floor: NA

Room #: R013

Area (sqft): 600

Survey Date: 2025-07-29

Last Re-Assessment: 2025-07-29

ASBESTOS																
System	Component	Material	Item	Covering	A*	V*	AP*	Good	Fair	Poor	Unit	Sample	Asbestos Type	Amount	Hazard	Friable
Wall		Vermiculite/concrete block walls			D	N		1200(7)			SF	V9500	Presumed Asbestos		Presumed Asbestos	F

Client: Durham Catholic District School Board

Site: 1103 Giffard Street, Whitby, ON

Building Name: 1103 : St. John the Evangelist
Catholic Element

Location: #34 : Classroom 120

Floor: NA

Room #: R014

Area (sqft): 800

Survey Date: 2025-07-28

Last Re-Assessment: 2025-07-29

ASBESTOS																
System	Component	Material	Item	Covering	A*	V*	AP*	Good	Fair	Poor	Unit	Sample	Asbestos Type	Amount	Hazard	Friable
Wall		Vermiculite/concrete block walls			D	N		1200(7)			SF	V9500	Presumed Asbestos		Presumed Asbestos	F

CONFIRMED AND PRESUMED HAZARDOUS MATERIALS REPORT

Client: Durham Catholic District School Board

Site: 1103 Giffard Street, Whitby, ON

Building Name: 1103 : St. John the Evangelist
Catholic Element

Location: #35 : Classroom 132

Floor: NA

Room #: R015

Area (sqft): 800

Survey Date: 2025-07-28

Last Re-Assessment: 2025-07-29

ASBESTOS																
System	Component	Material	Item	Covering	A*	V*	AP*	Good	Fair	Poor	Unit	Sample	Asbestos Type	Amount	Hazard	Friable
Wall		Vermiculite/concrete block walls			D	N		400(7)			SF	V9500	Presumed Asbestos		Presumed Asbestos	F

Newly installed vinyl floor tile.

Client: Durham Catholic District School Board

Site: 1103 Giffard Street, Whitby, ON

Building Name: 1103 : St. John the Evangelist
Catholic Element

Location: #36 : Classroom 119

Floor: NA

Room #: R016

Area (sqft): 896

Survey Date: 2025-07-28

Last Re-Assessment: 2025-07-29

ASBESTOS																
System	Component	Material	Item	Covering	A*	V*	AP*	Good	Fair	Poor	Unit	Sample	Asbestos Type	Amount	Hazard	Friable
Floor ¹		Vinyl Floor Tile and Mastic, 12 x 12 beige with dark streaks	Not Applicable		A	Y		846(7)			SF	S0020	Chrysotile	5-10%	Confirmed Asbestos	NF
Floor		Vinyl Floor Tile and Mastic, 12 x 12 beige with brown flecks			A	Y		50(7)			SF	V9500	Presumed Asbestos		Presumed Asbestos	NF
Wall		Vermiculite/concrete block walls			D	N		1200(7)			SF	V9500	Presumed Asbestos		Presumed Asbestos	F

1 - Mastic is presumed to contain asbestos

CONFIRMED AND PRESUMED HAZARDOUS MATERIALS REPORT

Client: Durham Catholic District School Board

Site: 1103 Giffard Street, Whitby, ON

Building Name: 1103 : St. John the Evangelist Catholic Element

Location: #37 : Classroom 117

Floor: NA

Room #: R017

Area (sqft): 896

Survey Date: 2025-07-28

Last Re-Assessment: 2025-07-29

ASBESTOS																
System	Component	Material	Item	Covering	A*	V*	AP*	Good	Fair	Poor	Unit	Sample	Asbestos Type	Amount	Hazard	Friable
Floor ¹		Vinyl Floor Tile and Mastic, 12 x 12 beige with brown flecks			A	Y		20(7)			SF	V9500	Presumed Asbestos		Presumed Asbestos	NF
Floor ²	N/a	Vinyl Floor Tile and Mastic, 12 x 12 beige with dark streaks	Not Applicable		A	Y		876(7)			SF	V0020	Chrysotile	5-10%	Confirmed Asbestos	NF
Wall		Vermiculite/concrete block walls			D	N		1200(7)			SF	V9500	Presumed Asbestos		Presumed Asbestos	F

1 - Mastic is confirmed to contain asbestos

2 - Mastic is presumed to contain asbestos

Client: Durham Catholic District School Board

Site: 1103 Giffard Street, Whitby, ON

Building Name: 1103 : St. John the Evangelist Catholic Element

Location: #38 : Boys W.R.

Floor: NA

Room #: N/A

Area (sqft): 240

Survey Date: 2025-07-28

Last Re-Assessment: 2025-07-29

ASBESTOS																
System	Component	Material	Item	Covering	A*	V*	AP*	Good	Fair	Poor	Unit	Sample	Asbestos Type	Amount	Hazard	Friable
Floor	N/a	Terrazzo	Not Applicable		A	Y		240(7)			SF	V9500	Presumed Asbestos		Presumed Asbestos	NF

CONFIRMED AND PRESUMED HAZARDOUS MATERIALS REPORT

Client: Durham Catholic District School Board

Site: 1103 Giffard Street, Whitby, ON

Building Name: 1103 : St. John the Evangelist
Catholic Element

Location: #39 : Girls W.R.

Floor: NA

Room #: N/A

Area (sqft): 240

Survey Date: 2025-07-28

Last Re-Assessment: 2025-07-29

ASBESTOS																
System	Component	Material	Item	Covering	A*	V*	AP*	Good	Fair	Poor	Unit	Sample	Asbestos Type	Amount	Hazard	Friable
Floor	N/a	Terrazzo	Not Applicable		A	Y		240(7)			SF	V9500	Presumed Asbestos		Presumed Asbestos	NF

Client: Durham Catholic District School Board

Site: 1103 Giffard Street, Whitby, ON

Building Name: 1103 : St. John the Evangelist
Catholic Element

Location: #43 : Classroom 115

Floor: NA

Room #: R018

Area (sqft): 896

Survey Date: 2025-07-28

Last Re-Assessment: 2025-07-29

ASBESTOS																
System	Component	Material	Item	Covering	A*	V*	AP*	Good	Fair	Poor	Unit	Sample	Asbestos Type	Amount	Hazard	Friable
Floor ¹		Vinyl Floor Tile and Mastic, 12 x 12 beige with dark streaks	Not Applicable		A	Y		876(7)			SF	S0020	Chrysotile	5-10%	Confirmed Asbestos	NF
Floor ²		Vinyl Floor Tile and Mastic, 12 x 12 beige with brown flecks			A	Y		20(7)			SF	V9500	Presumed Asbestos		Presumed Asbestos	NF
Wall		Vermiculite/concrete block walls			D	N		1200(7)			SF	V9500	Presumed Asbestos		Presumed Asbestos	F

1 - Mastic is presumed to contain asbestos

2 - Mastic is confirmed to contain asbestos

CONFIRMED AND PRESUMED HAZARDOUS MATERIALS REPORT

Client: Durham Catholic District School Board

Site: 1103 Giffard Street, Whitby, ON

Building Name: 1103 : St. John the Evangelist
Catholic Element

Location: #44 : Classroom 113

Floor: NA

Room #: R019

Area (sqft): 784

Survey Date: 2025-07-28

Last Re-Assessment: 2025-07-29

ASBESTOS																
System	Component	Material	Item	Covering	A*	V*	AP*	Good	Fair	Poor	Unit	Sample	Asbestos Type	Amount	Hazard	Friable
Wall		Vermiculite/concrete block walls			D	N		400(7)			SF	V9500	Presumed Asbestos		Presumed Asbestos	F

Client: Durham Catholic District School Board

Site: 1103 Giffard Street, Whitby, ON

Building Name: 1103 : St. John the Evangelist
Catholic Element

Location: #45 : Program Support Office

Floor: NA

Room #: N/A

Area (sqft): 640

Survey Date: 2025-07-28

Last Re-Assessment: 2025-07-29

ASBESTOS																
System	Component	Material	Item	Covering	A*	V*	AP*	Good	Fair	Poor	Unit	Sample	Asbestos Type	Amount	Hazard	Friable
Wall		Vermiculite/concrete block walls			D	N		400(7)			SF	V9500	Presumed Asbestos		Presumed Asbestos	F

CONFIRMED AND PRESUMED HAZARDOUS MATERIALS REPORT

Client: Durham Catholic District School Board

Site: 1103 Giffard Street, Whitby, ON

Building Name: 1103 : St. John the Evangelist
Catholic Element

Location: #46 : Corridor

Floor: NA

Room #: N/A

Area (sqft): 1900

Survey Date: 2025-07-28

Last Re-Assessment: 2025-07-29

ASBESTOS																
System	Component	Material	Item	Covering	A*	V*	AP*	Good	Fair	Poor	Unit	Sample	Asbestos Type	Amount	Hazard	Friable
Floor		Terrazzo	Not Applicable		A	Y		1850(7)			SF	V9500	Presumed Asbestos		Presumed Asbestos	NF
Floor		Mortar	Not Applicable	Ceramic Tiles	A	Y		50(7)			SF	V9500	Presumed Asbestos		Presumed Asbestos	NF
Wall		Vermiculite/concrete block walls			D	N		200(7)			SF	V9500	Presumed Asbestos		Presumed Asbestos	F

One ceiling tile sample collected during 1990 survey found not to contain asbestos.

Client: Durham Catholic District School Board

Site: 1103 Giffard Street, Whitby, ON

Building Name: 1103 : St. John the Evangelist
Catholic Element

Location: #47 : Exterior

Floor: NA

Room #: N/A

Area (sqft): 0

Survey Date: 2025-07-28

Last Re-Assessment: 2025-07-29

ASBESTOS																
System	Component	Material	Item	Covering	A*	V*	AP*	Good	Fair	Poor	Unit	Sample	Asbestos Type	Amount	Hazard	Friable
Wall ¹	Fascia	Cement Product	Not Applicable		C	Y		500(7)			SF	V9000	Confirmed Asbestos		Confirmed Asbestos	NF

1 - Above the front entrance and on the exterior of the gym

Legend:



Sample number		Units		Other	
S####	Asbestos sample collected	SF	Square feet	A	Access
V####	Material visually similar to numbered sample collected	LF	Linear feet	V	Visible
V0000	Known non-asbestos material	EA	Each	AP	Air Plenum
V9000	Visually identified as an asbestos material	%	Percentage	F	Friable material
V9500	Material is presumed to be an asbestos material			NF	Non Friable material
				PF	Potentially Friable material

Access	
A	Accessible to all building occupants
B	Accessible to maintenance and operations staff without a ladder
C	Accessible to maintenance and operations staff with a ladder. Also rarely entered, locked areas
D	Not normally accessible

Condition	
Good	No visible damage or deterioration
Fair	Minor, repairable damage, cracking, delamination or deterioration
Poor	Irreparable damage or deterioration with exposed and missing material

Visible	
Y	The material is visible when standing on the floor of the room, without the removal or opening of other building components (e.g. ceiling tiles or access panels).
N	The material is not visible to view when standing on the floor of the room and requires the removal of a building component (e.g. ceilings tiles or access panels) to view and access. Includes rarely entered crawlspaces, attic spaces, etc. Observations will be limited to the extent visible from the access points.
L	The material is partially visible to view when standing on the floor of the room and requires the removal of a building component (e.g. ceiling system or access panels) to view completely and access. Includes partially viewed access points to crawlspaces, attic spaces, etc. without entering. Observations are limited to the extent visible from the access points.

Air Plenum	
Yes or No	The material is in a return air plenum or in a direct airstream or there is evidence of air erosion (e.g. duct for heating or cooling blowing directly on or across an ACM). This field is only completed where Air Plenum consideration is required by regulation.

Colour Coding	
	The material is a hazardous material, either by analytical results or by visible identification.
	The material is presumed to be a hazardous material, based on visual appearance, and was not sampled due to limited access or the non-destructive nature of sampling.

Action				
(1)	Clean up of ACM Debris	(2)	Precautions for Access Which may Disturb ACM Debris	(3) ACM removal
(4)	Precautions for Work Which may Disturb ACM in Poor Condition	(5)	Proactive ACM removal (Minimum repair required for fair condition)	(6) ACM repair
(7)	Management program and surveillance			

APPENDIX VI
Photographs



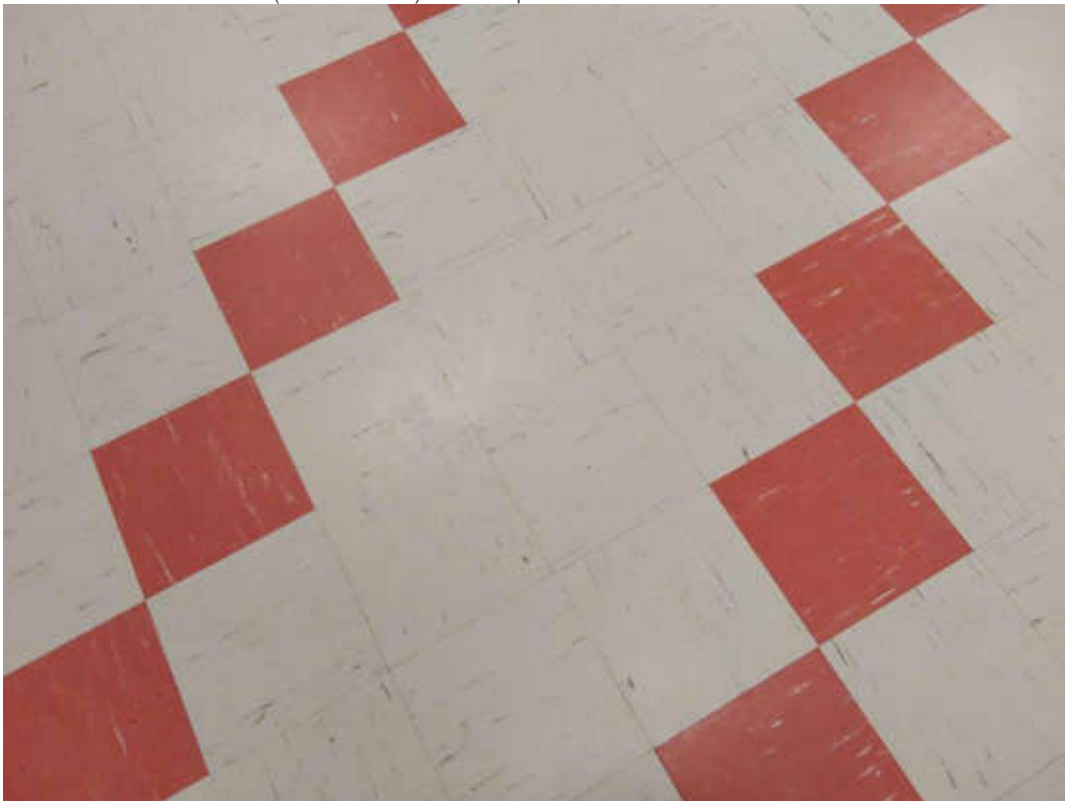
V0002 (Confirmed Asbestos), 9 x 9 beige with white streaks, Floor, Vinyl Floor Tile and Mastic, Room 3 (Location #: 5)
Mastic is presumed to contain asbestos



V0003 (Confirmed Asbestos), 12 x 12 tan with white and brown flecks, Floor, Vinyl Floor Tile and Mastic, Classroom 109
(Location #: 29) Mastic is presumed to contain asbestos



S0010 (Confirmed Asbestos), 12 x 12 tan with white and brown flecks, Floor, Vinyl Floor Tile and Mastic, Classroom 103
(Location #: 26) Mastic is presumed to contain asbestos



S0017 (Confirmed Asbestos), 9 x 9 grey with black streaks, Floor, Vinyl Floor Tile and Mastic, Room 1 (Location #: 4)
Mastic is presumed to contain asbestos



S0018 (Confirmed Asbestos), 9 x 9 red with white streaks, Floor, Vinyl Floor Tile and Mastic, Room 1 (Location #: 4)
Mastic is presumed to contain asbestos



S0019 (Confirmed Asbestos), 12 x 12 orange, Floor, Vinyl Floor Tile and Mastic, Classroom 105 (Location #: 27)
Mastic is confirmed to contain asbestos



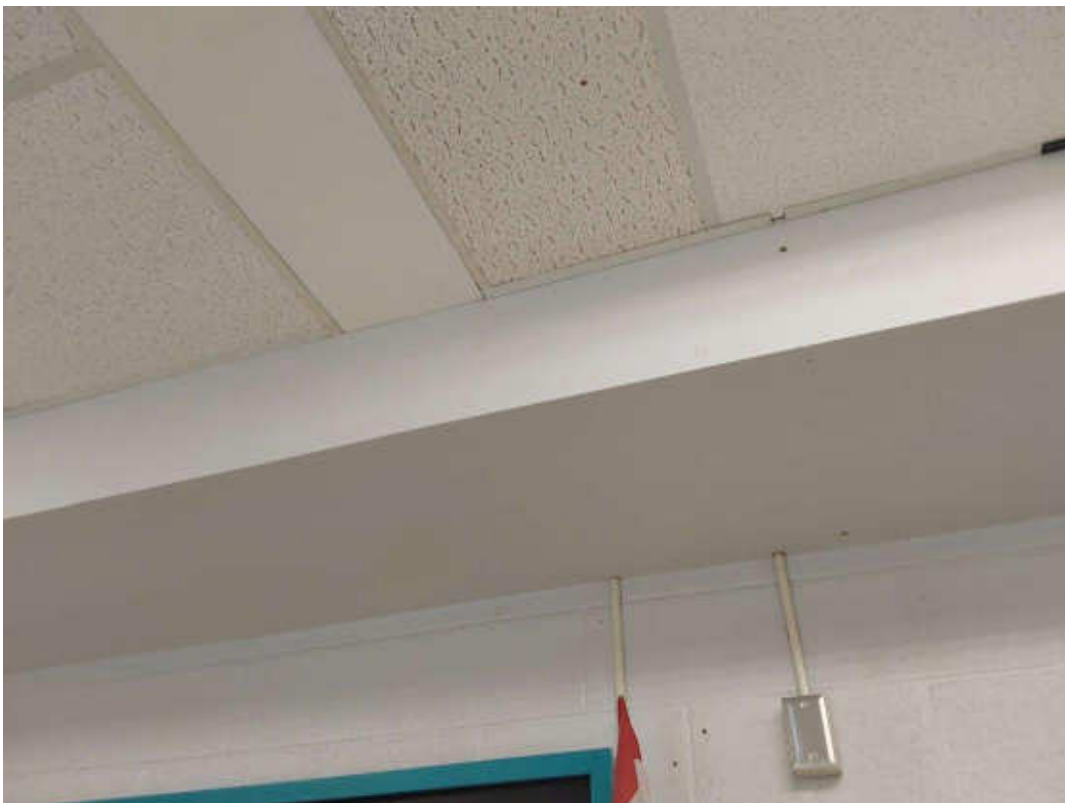
V0020 (Confirmed Asbestos), 12 x 12 off-white with brown streaks, Floor, Vinyl Floor Tile and Mastic, Gym (Location #: 1)
Stage floor, Mastic is presumed to contain asbestos



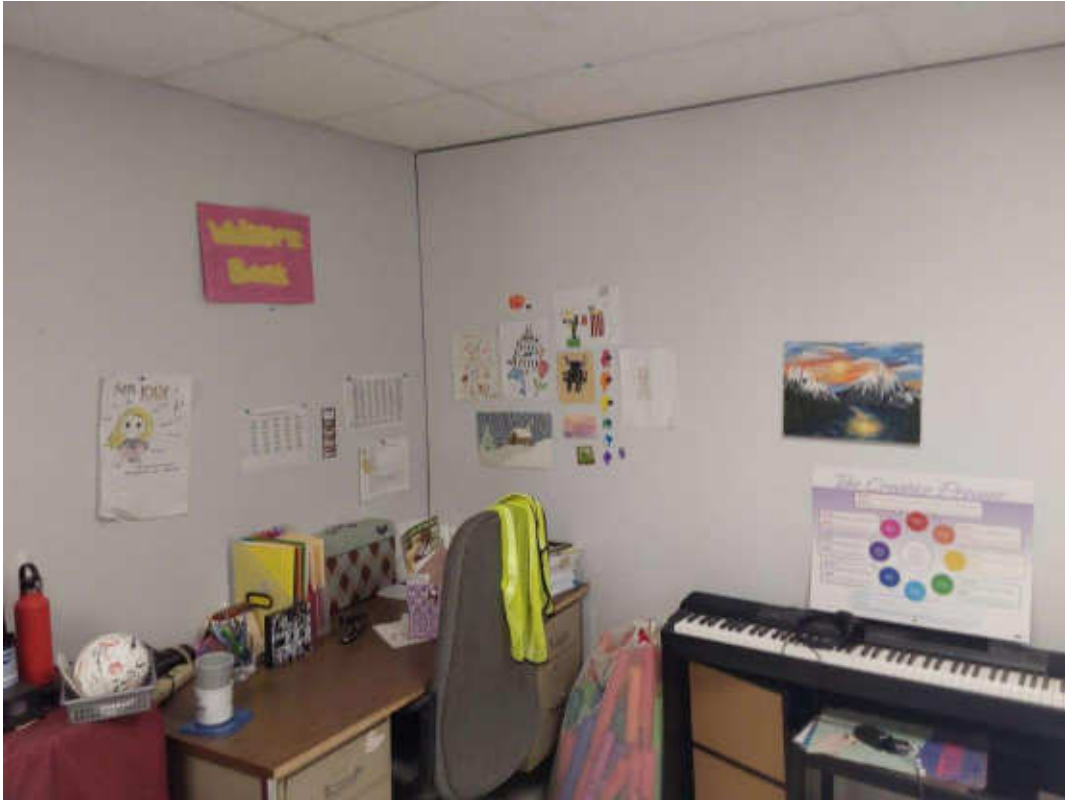
S0021 (Confirmed Asbestos), 9 x 9 red with dark red streaks, Floor, Vinyl Floor Tile and Mastic, Room 3 (Location #: 5)
Mastic is presumed to contain asbestos



V0028 (Confirmed Asbestos), Ceiling, Drywall and joint compound, Men's Washroom (Boys) (Location #: 12)



V0028 (Confirmed Asbestos), Ceiling, Drywall and joint compound, Classroom 109 (Location #: 29)



V0028 (Confirmed Asbestos), Wall, Drywall and joint compound, Physiotherapy Room (Location #: 31)



V9000 (Confirmed Asbestos), Wall, Vermiculite Investigation, Offices (Location #: 30)
Vermiculite found



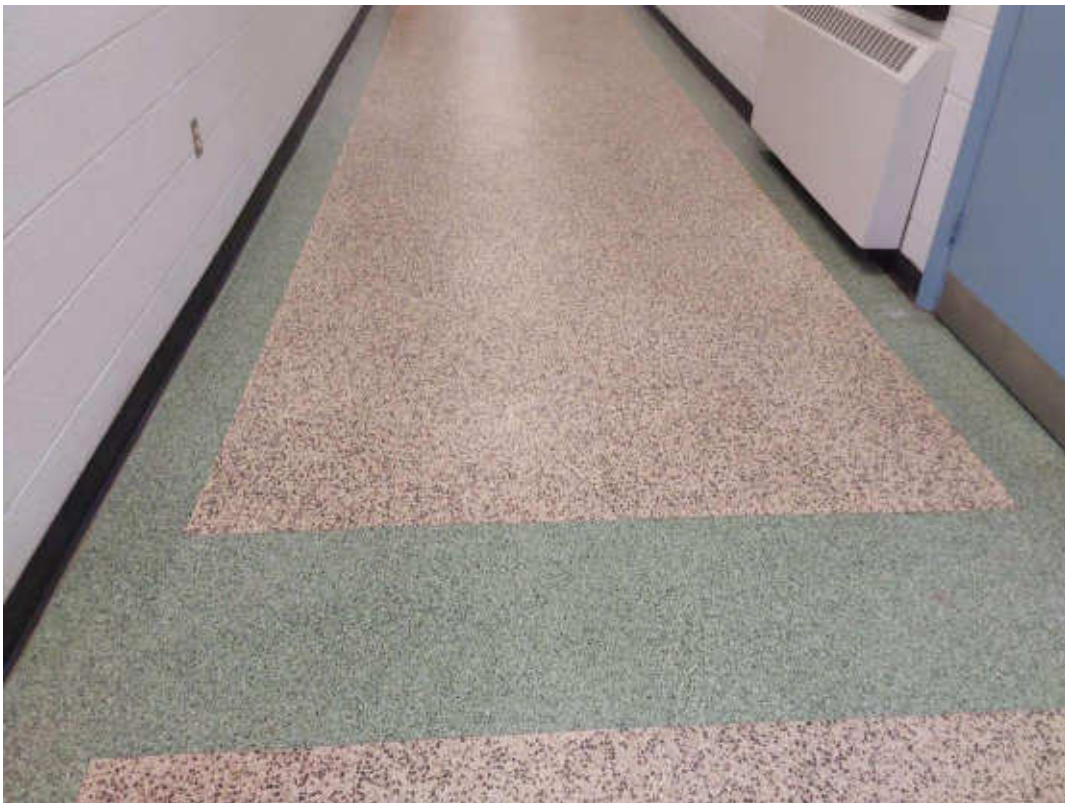
V9000 (Confirmed Asbestos), Wall, Fascia, Cement Product, Exterior (Location #: 47)
Above the front entrance and on the exterior of the gym



V9500 (Presumed Asbestos), Wall, Mortar, Men's Washroom (Boys) (Location #: 12)



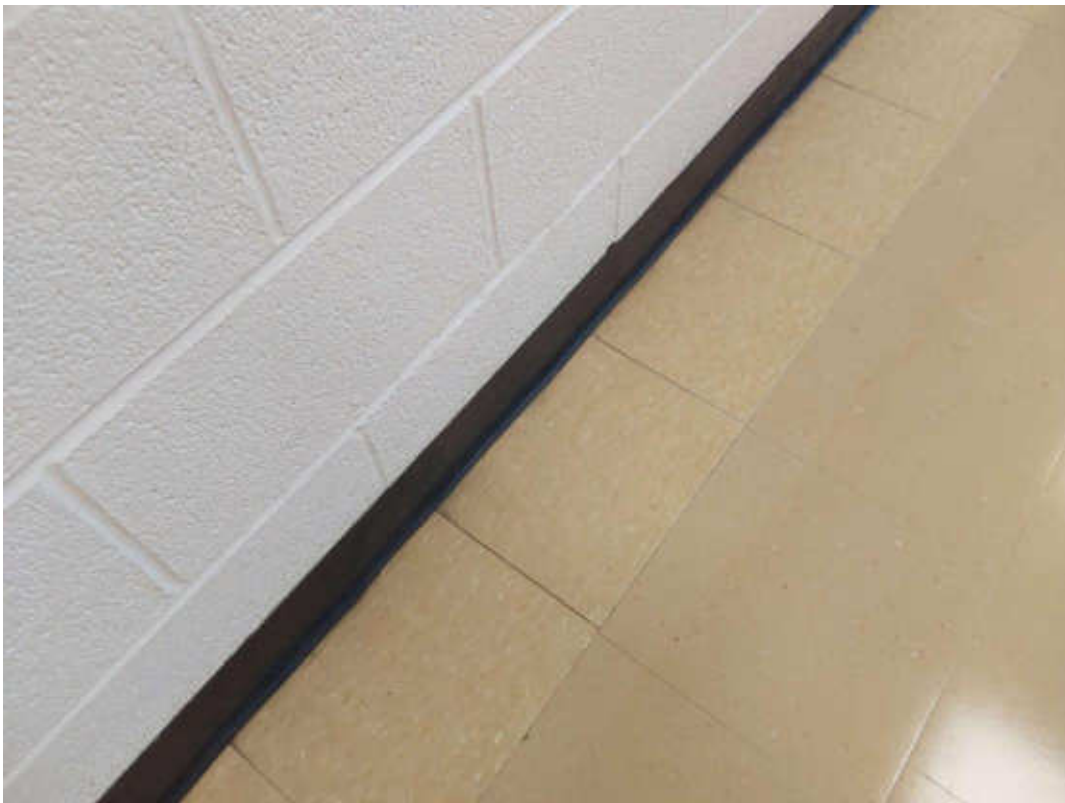
V9500 (Presumed Asbestos), Wall, Vermiculite/concrete block walls, Staff Room (Location #: 16)



V9500 (Presumed Asbestos), Floor, Terrazzo, Corridor (Location #: 25)



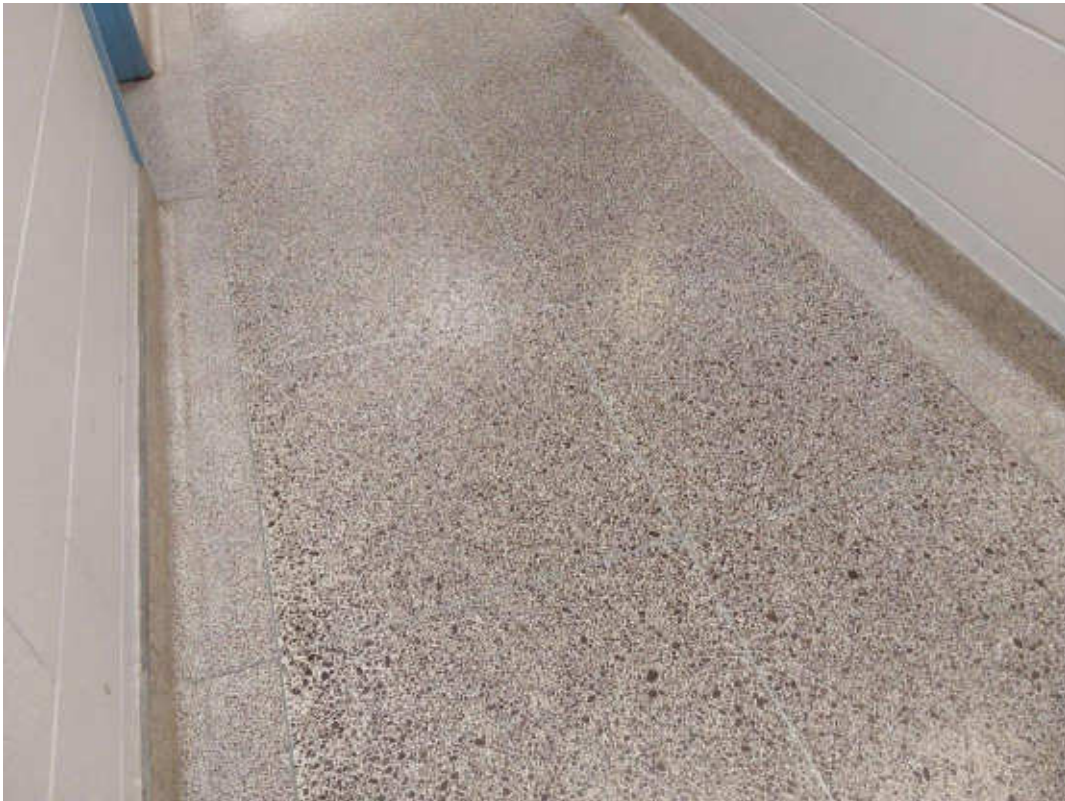
V9500 (Presumed Asbestos), Floor, Mortar, Corridor (Location #: 25)



V9500 (Presumed Asbestos), 12 x 12 beige with white mottle, Floor, Vinyl Floor Tile and Mastic, Classroom 105 (Location #: 27)
Mastic is presumed to contain asbestos



V9500 (Presumed Asbestos), 12 x 12 beige with brown flecks, Floor, Vinyl Floor Tile and Mastic, Classroom 115 (Location #: 43)
Mastic is confirmed to contain asbestos



V9500 (Presumed Asbestos), Floor, Terrazzo, Corridor (Location #: 46)



V9500 (Presumed Asbestos), Floor, Mortar, Corridor (Location #: 46)



V9500 (Presumed Asbestos), Floor, Mortar, Room 2 (Location #: 8)
Renovated space



V0000 (None), 12 x 12 grey mottled, Floor, Vinyl Floor Tile and Mastic, Classroom 132 (Location #: 35)
Post 2005 new



Building Photo