



**Addendum #1**

**Bid Opportunity: T26-23 PROJECT # 20251617 -  
Foundation Waterproofing and Drainage Repairs  
at Uxbridge Secondary School  
Closing Date: Thursday, April 9, 2026 11:00 AM**

---

The following additions, deletions and/or items of clarification shall be included as an integral part of the Tender documents and scope of work:

**12.4 General Contractors – Category GC1:**

Only these pre-qualified general contractors are eligible to be included for the interior construction work. No other general contractors are eligible for this Work.

Baycrest Project & Construction	Toronto, ON
H.N. Construction Limited	Toronto, ON
J.V.S. Construction Limited	Whitby, ON
MVW Construction & Engineering Inc.	Lindsay, ON
Norfield Construction Inc.	Bolton, ON
P & C General Contracting Ltd.	Markham, ON
RJB Construction (1989) Ltd	Newmarket, ON
Seaforth Building Group 1992 Ltd	Scarborough, ON
Snyder Construction	Ashburn, ON
Town and Country Contracting Ltd.	Oshawa, ON

## 12.5 Masonry Contractors:

Only these pre-qualified masonry contractors are eligible to be included for the Work. No other masonry contractors are eligible for this Work.

<b>Company Name</b>	<b>Company Location</b>
BRC Restoration	Uxbridge, ON
Clifford Restoration	Scarborough, ON
Colonial Building Restoration	Scarborough, ON
Eagle Restoration	Toronto, ON
Groupe Atwil-Morin	Montreal, QC
Heritage Restoration	Stouffville, ON
Historic Restoration	Toronto, ON
KIB Building Restorations	Mississauga, ON
Limen Group	Toronto, ON
Phoenix Restoration	Whitby, ON
Restorer's Group	Richmond Hill, ON
Robertson Restoration	Brantford, ON
Trinity Custom Masonry	Scarborough, ON

## 12.6 Asphalt Contractors:

Only these pre-qualified asphalt contractors are eligible to be included for the Work. No other asphalt contractors are eligible for this Work.

Company Name	Location
APPCO Paving	Ajax, ON
Ashland Paving	Concord, ON
Bevcon Construction & Paving Ltd.	Vaughan, ON
Forest Contractors Ltd.	Vaughan, ON
Onsite Contracting Inc.	Concord, ON
Pacific Paving Ltd.	Mississauga, ON
Peltar Paving & General Contracting Co. Ltd.	Concord, ON
Pylon Paving Inc.	Mississauga, ON
Roadside Paving	North York, ON
Royalcrest Paving	Toronto, ON
TriSon Contracting	Port Perry, ON
Whitby Shores Landscaping Ltd.	Whitby, ON

### **Question 1:**

The submission status for this tender shows Hard Copy Only. Will this be changed?

**Answer 1: Due to a bids&tenders system issue, DDSB could not indicate “online” submission as the method. This has been resolved now, and only online submissions will be accepted for this project. No hard copy submissions will be accepted for this tendered project.**

### **Question 2:**

Bids and Tenders notes that submission method is (Hard copy) please confirm

**Answer 2: Please see answer 1.**

**Revisions to the Scope Of Work:**

- 1.1 Add mechanical scope of work to the base bid scope of work as per the attached M1 addendum.
- 1.2 Supply and install a new double interior vestibule door and door frame to match the existing. Remove and store the existing hardware and install on the new door; existing hardware to be reused. Allow for terrazzo flooring work (removal and make good to match the existing) at the base of the frames as needed to carry out the work.

End of Addendum #1

**ADDENDUM #M1**

March 27<sup>th</sup>, 2026

Anne Floros M. Eng., P.Eng.  
Floros Concept Incorporated  
Toronto, Ontario

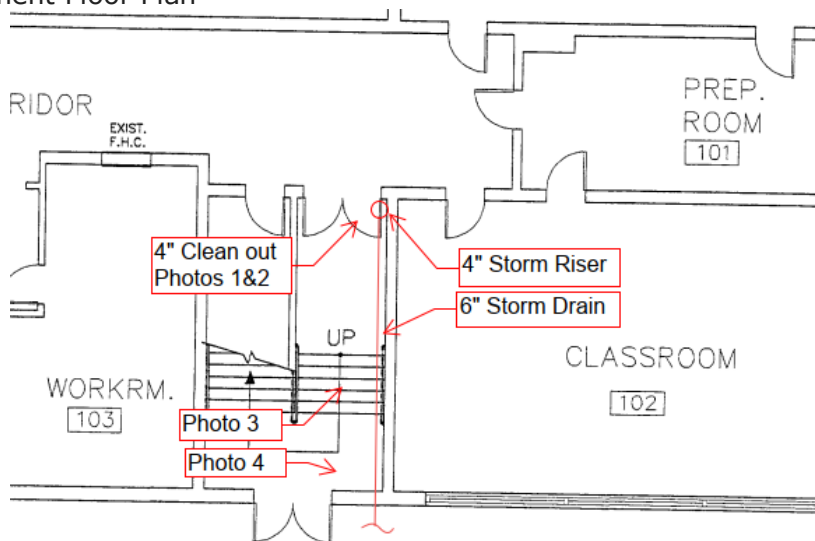
Dear Ms. Floros,

**PROJECT:** Foundation Waterproofing and Drainage Repairs at  
Uxbridge Secondary School  
**LOCATION:** 127 Planks Lane, Uxbridge, ON  
**DDSB Project#:** T26-23  
**Entrust Project #:** 26017

Regarding the above project Issued for Tender, please adjust the contract as outlined below:

**Attachments / Drawing Revisions:**

1. Reference Document:
  - 1.1. 1956 – P-1 thru P-5 PLUMBING LAYOUT(S)
  - 1.2. 2003 – PD1 thru PD5-PLUMBING AND DRAINAGE
  - 1.3. Basement Floor Plan



**2** BASEMENT FLOOR PLAN  
PD3 SCALE 1:125

1.4. Site Photos

Photo 1

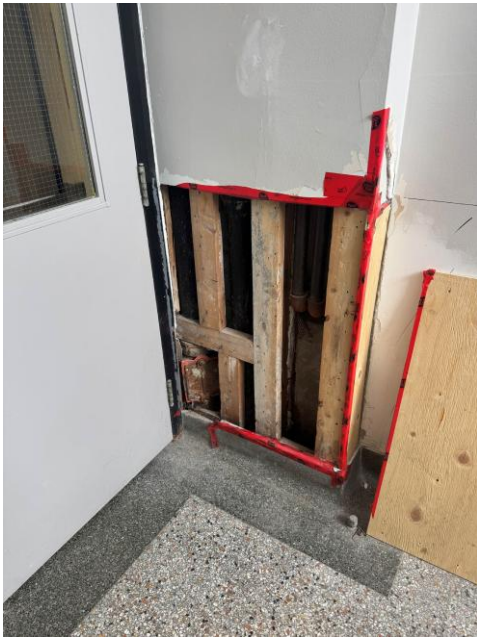


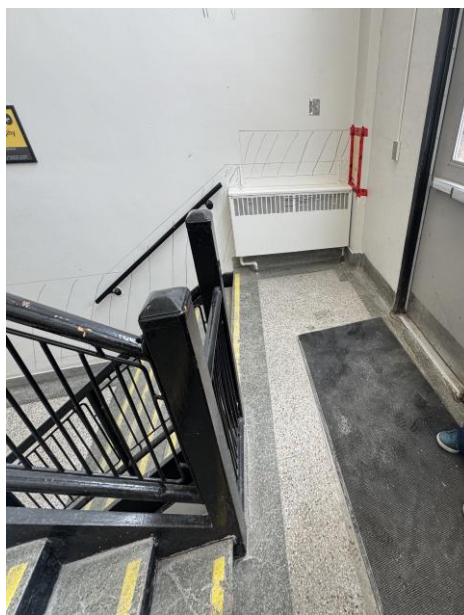
Photo 2



Photo 3



Photo 4



March 27<sup>th</sup>, 2026

2. Contractor shall provide the mechanical scope as follows
  - 2.1. Contractor shall replace 4" to 6" pipe fitting (photos 1&2) c/w watertight cleanout.
    - 2.1.1. Allow for cut/patch/repair of approx. 4ft x 5ft section of plaster/drywall/framing, painting etc... as required to complete pipe fitting modification.
  - 2.2. Site Inspection Services including:
    - 2.2.1. Camera inspection of 4"/6" storm piping through to the exterior.
    - 2.2.2. Submission requirements shall include video, pipe inverts, pipe size verification, fitting type and location, overall piping layout confirm as described in section 1.3.
    - 2.2.3. Site Locates, as required to verify 4"/6" storm piping location
  - 2.3. Contractor shall provide all tools/equipment, material, etc... required to complete a non-destructive approx. 35ft of 6" dia. storm pipe rehabilitation that satisfies the requirements of specification 22 05 83.63 – Cured-In-Place Pipe (CIPP) Lining

*Sincerely,*



---

*Entrust Engineering Inc.*  
*Daniel Nosella, P.Eng.*  
*Principal-Mechanical Engineering*

ENTRUST ENGINEERING INC.  
940 The East Mall, Suite 303,  
Toronto, ON M9B 6J7  
416 428 7923



## Part 1 General

### 1.1 SUMMARY

- .1 **Work Included:** This section covers the cost-effective trenchless rehabilitation of buried storm piping located on the interior or exterior of the building using a structural CIPP liner.
- .2 **Site Conditions:** The installation shall accommodate a hybrid access strategy: one end shall be accessed via interior cleanouts and the opposite end via an exterior excavation outside the building exit point.
- .3 **Methodology:** The system utilizes the Pull-in-Place (PIP) method to negotiate multiple bends and deteriorated sections.

### 1.2 REFERENCES

- .1 **ASTM F1743:** Standard Practice for Rehabilitation of Existing Pipelines by Pulled-in-Place Installation of Cured-in-place Thermosetting Resin pipe.
- .2 **ASTM D790 & D638:** Test methods for flexural and tensile properties of plastics.
- .3 **ASTM D5813:** Standard Specification for Cured-in-Place Thermosetting Resin Sewer Piping Systems.
- .4 **NSF/ANSI 14:** Plastic Piping Systems Components and Related Materials.
- .5 **Code Compliance:** The final product must comply with the National Plumbing Code of Canada (NPC), UPC, IPC, and IRC.

### 1.3 SUBMITTALS

- .1 **Product Data:** Manufacturer technical data for all pipe, tube, resin, and couplings.
- .2 **Shop Drawings:** Detailed lining locations, MSDS, and the exact length of piping to be treated. Contractor shall submit engineering calculation for the specific burial depth of the storm pipe line.
- .3 **Inspection Media:** Digital CCTV documentation recorded prior to cleaning, after mechanical cleaning/milling, and after final epoxy lining.
- .4 **Field Test Reports:** Documented test results interpreted for compliance with performance requirements.

### 1.4 QUALITY ASSURANCE

- .1 **Labeling:** All materials must bear the label or markings of the specified testing agency.
- .2 **Audits:** Manufacturer must provide audit certificates from IAPMO, ICC-ES, and NSF International proving facility compliance.
- .3 **NSF Compliance:** Storm/drain piping components must include markings for "NSF-drain" or "NSF-sewer".

## 1.5 WARRANTY AND PERFORMANCE GUARANTEE

- .1 **Warranty Period:** The Contractor shall warranty all work, including both materials and installation, for a period of not less than 12 months from the date of installation.
- .2 **Material and Workmanship Guarantee:** The finished Cured-In-Place Pipe (CIPP) shall be guaranteed against manufacturing defects and installation errors, including but not limited to delamination, cracks, dry spots, or excessive wrinkling that may impede flow.
- .3 **Water-Tightness and Infiltration:** The CIPP liner must provide a continuous, smooth-bore interior that creates a water-tight seal within the host pipe.
- .4 **Performance Requirement:** The guarantee shall explicitly cover the elimination of groundwater infiltration and root intrusion for the duration of the warranty period.
- .5 **Host-Pipe Bond:** The 100% solids epoxy resin system must maintain a structural bond to the cleaned and abraded host pipe to prevent the tracking of water between the liner and the original pipe wall.
- .6 **Remedial Action:** If a defect or leak is identified during the warranty period, the Contractor shall, at their own expense, perform the necessary repairs—including CCTV verification—to restore the system to the specified performance standards.

## Part 2 Products

### 2.1 CIPP LINING TUBE

- .1 **Construction:** One or more layers of flexible needled felt or equivalent nonwoven material capable of carrying resin and withstanding installation pressures.
- .2 **Impermeable Layer:** The outer layer must have a flexible plastic film compatible with the resin to contain it during impregnation.
- .3 **Integrated Bladder:** The tube must contain an internal, removable bladder that withstands required installation pressure without absorbing resin.
- .4 **Configuration:** The liner must be continuous in length with uniform wall thickness and be capable of conforming to 45 deg. and 90 deg. bends.

### 2.2 EPOXY RESIN SYSTEM

- .1 **Type:** 100% solids, solvent-free epoxy resin.
- .2 **Restrictions:** Polyester and vinyl ester resins are **strictly prohibited** to ensure no styrene odors migrate within the building.
- .3 **Chemical Resistance:** Resin must show no more than a 20% loss in structural properties when exposed to nitric acid (5%), sulfuric acid (10%), and gasoline (100%).
- .4 **Color:** The finished internal wall must be a **light blue reflective color** to facilitate clear detail CCTV inspection.

### 2.3 MINIMUM STRUCTURAL PROPERTIES (ASTM F1743)

- .1 | Property | ASTM Test Method | Minimum Value |
- .2 | **Tensile Strength** | D638 | 3,000 psi |
- .3 | **Flexural Strength** | D790 | 4,500 psi |
- .4 | **Flexural Modulus** | D790 | 250,000 psi |

**Part 3 Execution**

**3.1 PREPARATION AND ACCESS**

- .1 **Site Logistics:** The General Contractor shall provide access to buried storm lines at interior points and exterior excavation points.
- .2 **Bypass:** Provide temporary bypass pumping or relief to ensure a dry host pipe prior to and during installation.
- .3 **Initial Inspection:** Perform CCTV inspection to assess the environment, staging areas, and presence of obstructions.

**3.2 MECHANICAL CLEANING AND DESCALING**

- .1 **Restoration of Diameter:** Pipe segments shall be cleaned using mechanical milling or abrasive tools to reinstate the inside pipe diameter to its original condition.
- .2 **Removal of Build-up:** This primary stage must remove all scale, corrosion, and obstructions that interfere with lining.
- .3 **Substrate Verification:** After cleaning, the contractor must inspect the abraded pipes to confirm the system is properly prepared for the epoxy application.

**3.3 INSTALLATION (PULL-IN-PLACE)**

- .1 **Wet-out:** The resin and catalyst are accurately calculated and thoroughly mixed before saturating the felt tube using metal rollers.
- .2 **Insertion:** The impregnated liner is pulled into the specified location using cables.
- .3 **Positioning:** A CCTV camera must verify the liner is correctly positioned before inflation.
- .4 **Inflation:** The bladder is filled with air or water to an adequate pressure to form a tight fit against the internal circumference of the host pipe.

**3.4 CURING AND FINISH**

- .1 **Curing Cycle:** Curing may be ambient or accelerated using hot water.
- .2 **Visual Examination:** After curing, the epoxy coating must not contain blisters, cracks, pinholes, or wrinkles.
- .3 **Reinstatement:** Re-open any branch connections or floor drains using robotic cutting equipment.

**3.5 FIELD QUALITY CONTROL**

- .1 **Final CCTV Inspection:** Perform a high-definition CCTV inspection of the entire length of the cured liner to verify structural integrity and a smooth, obstruction-free bore.
- .2 **Leakage Testing:** The completed CIPP liner shall be tested for leaks using an air pressure test or hydrostatic test in accordance with local plumbing codes and manufacturer recommendations.
- .3 **Physical Property Verification:** If required by the Engineer, the Contractor shall provide a "cured field sample" (captured during installation) to an independent laboratory to verify that the flexural modulus and strength meet the minimums defined in Section 2.3 .
- .4 **Visual Standards:** The epoxy coating and liner must be free of blisters, chips, loose particles, oils, or pinholes.

**3.6 CLOSEOUT AND DOCUMENTATION**

- .1 **Installation Log:** Record date, diameter, length, resin mix, and curing times for each segment.
- .2 **Deliverables:** Provide the installation log and digital media containing pre-cleaning, post-cleaning, and final post-lining videos.
- .3 **O&M Training:** Provide the owner's representative with a 30-minute training session and an epoxy repair kit for future alterations.
- .4 **Warranty:** All work shall be warrantied for a minimum period of **12 months** from the date of installation.

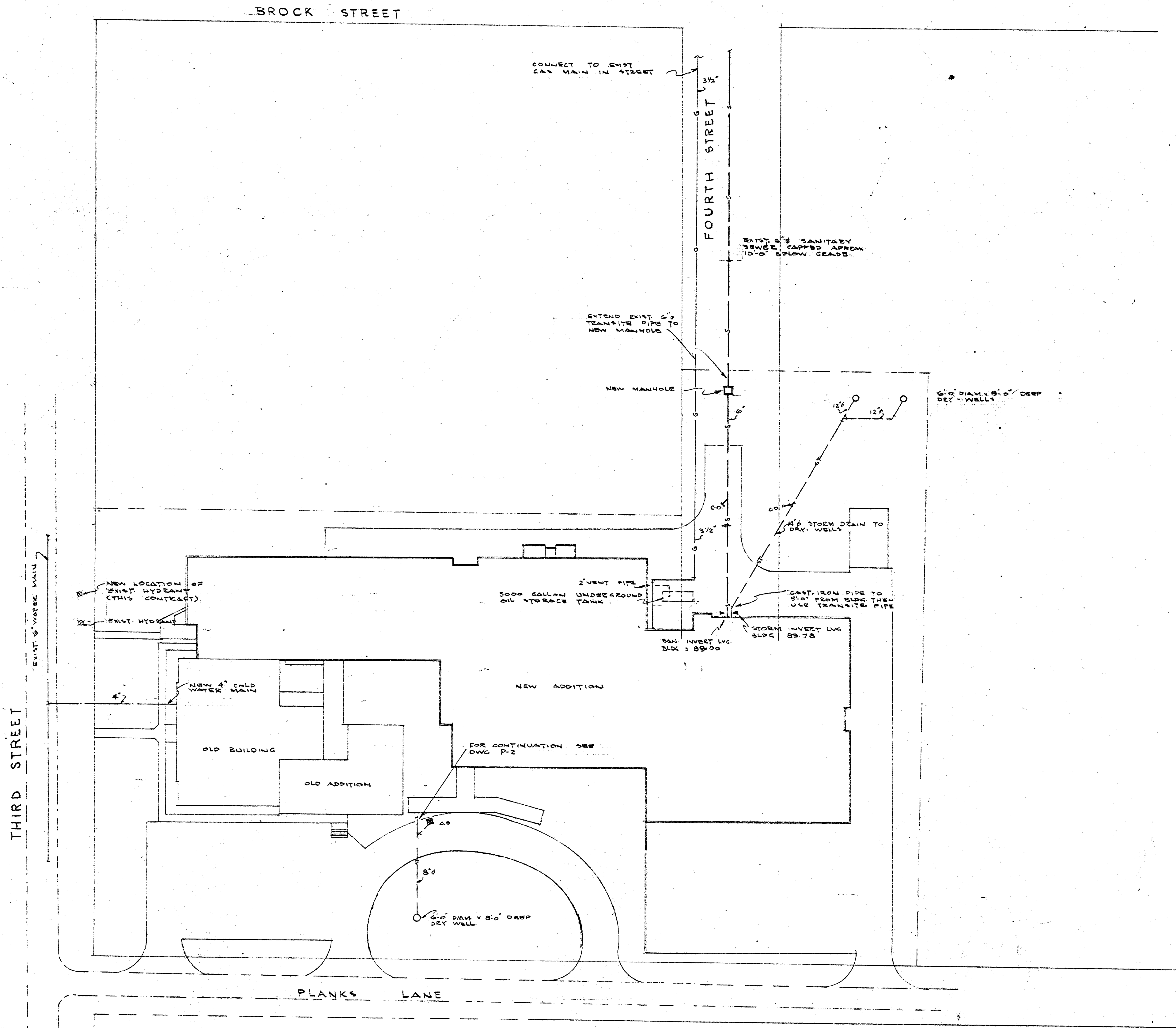
**Part 4 RECOMMENDED CONTRACTORS**

- .1 **OR approved equal**



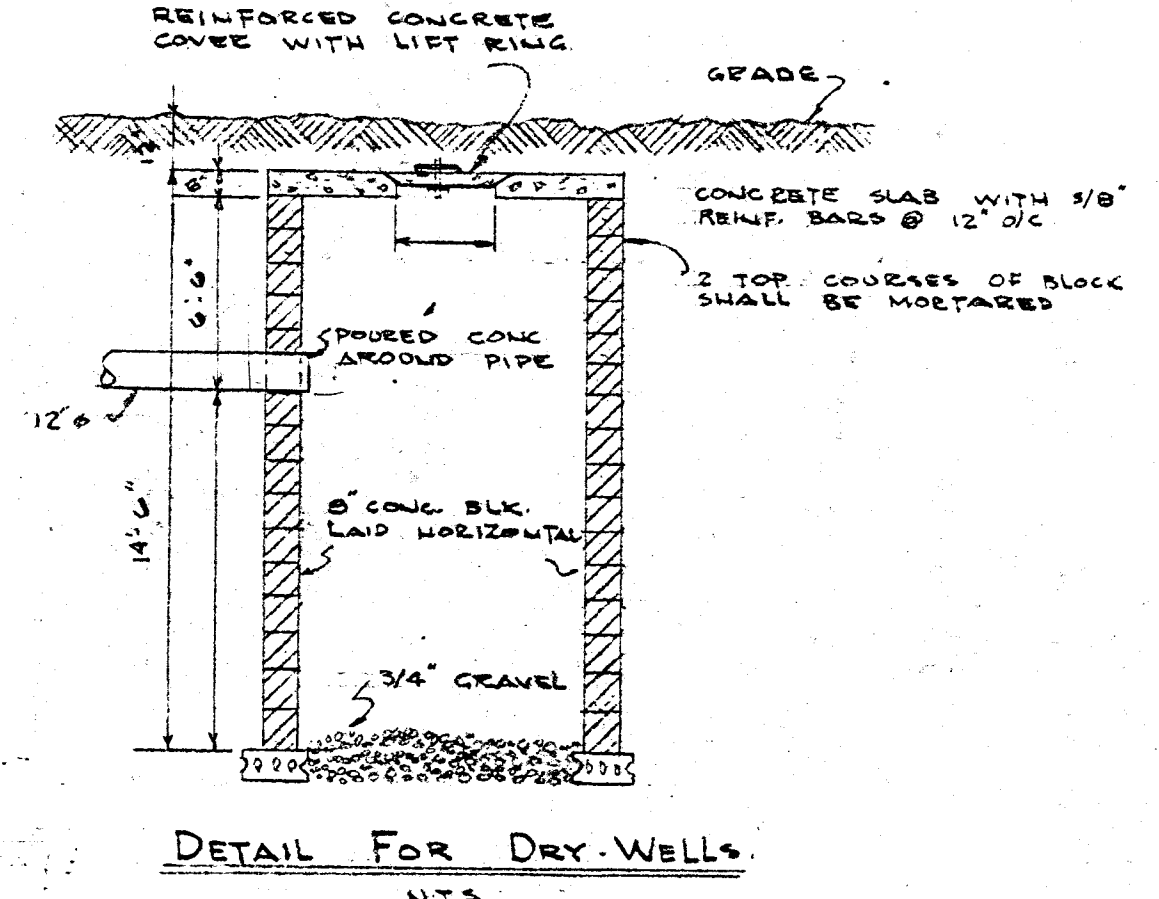
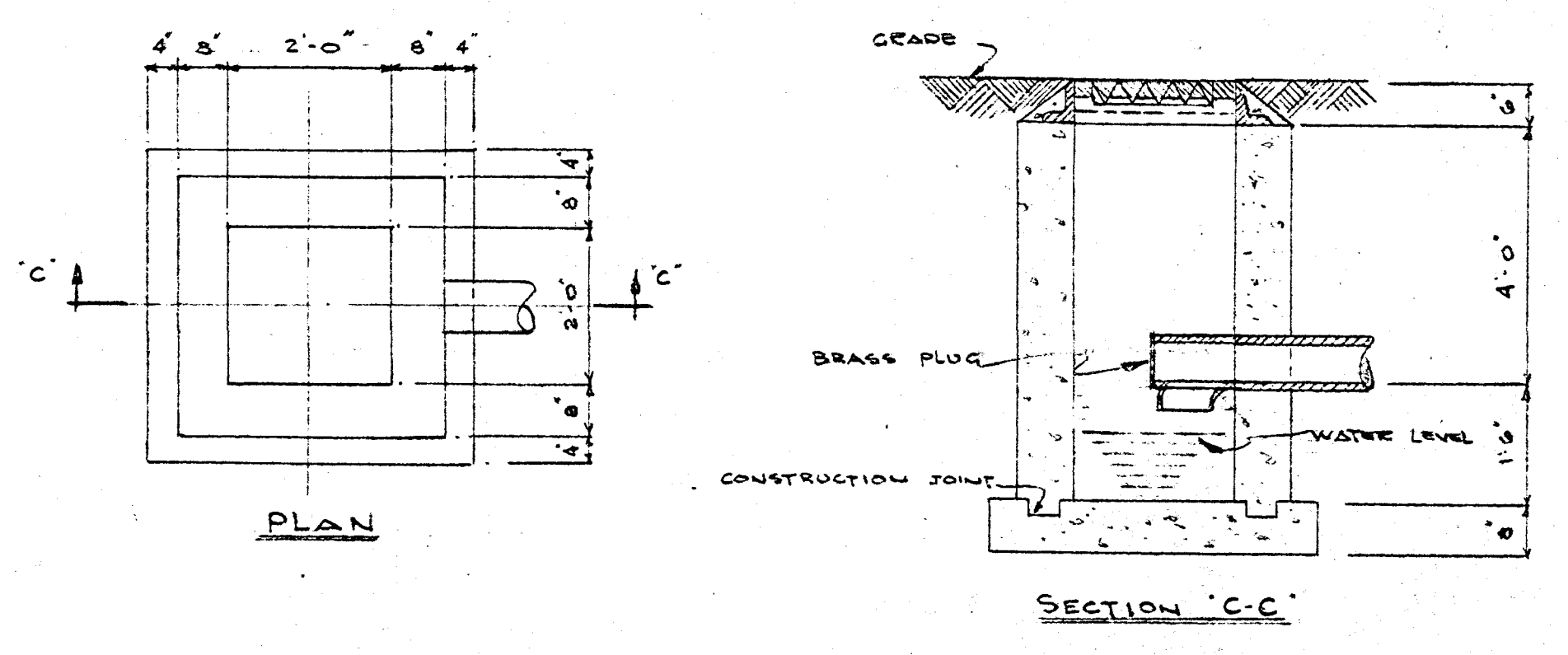
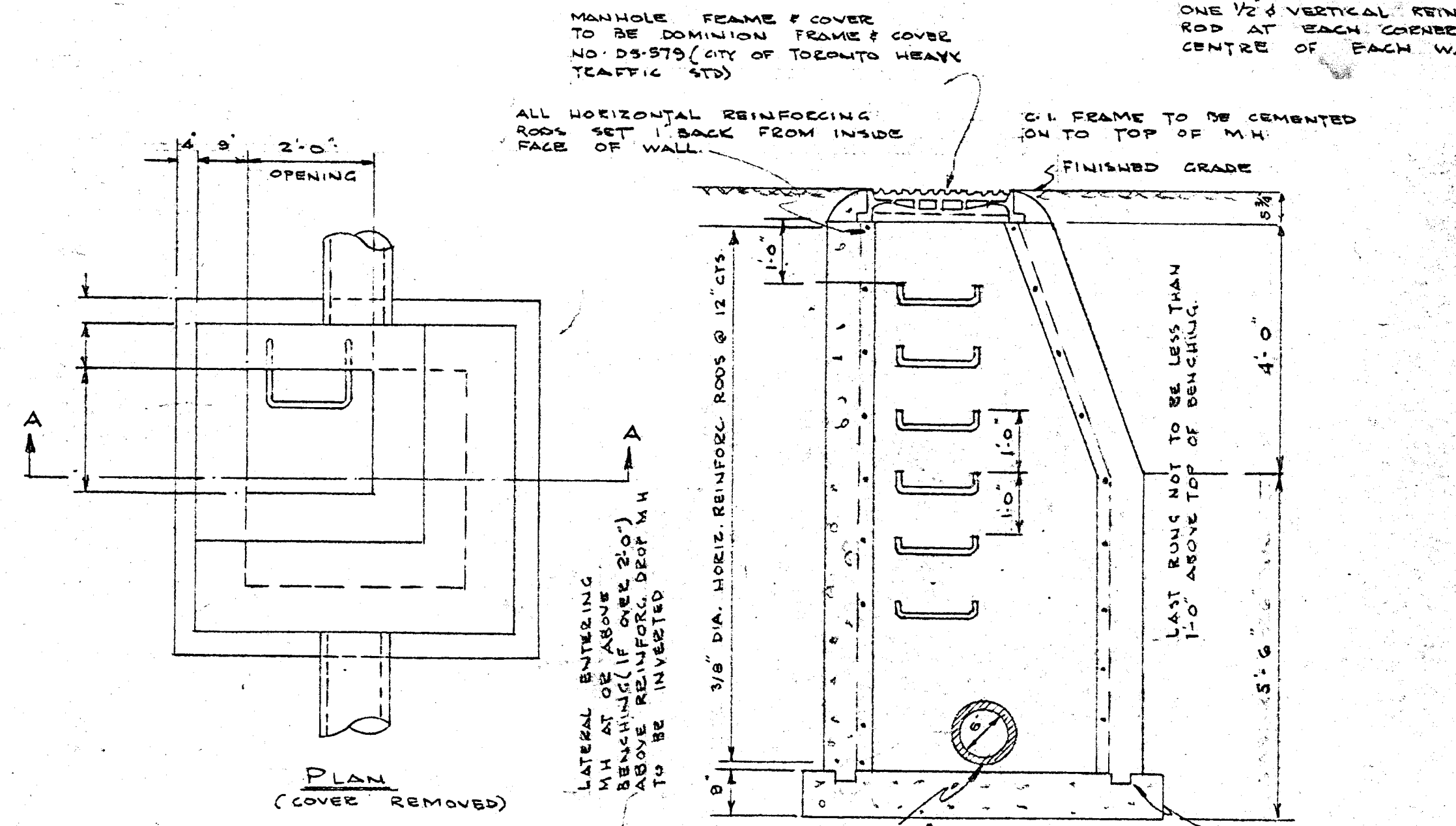
Travis Taylor [travis@ontariopipelining.com](mailto:travis@ontariopipelining.com)  
C: 905 442 5235  
[www.ontariopipelining.com](http://www.ontariopipelining.com)

**END OF SECTION**



PLOT PLAN  
SCALE 1" = 40'

NOTE: LADDER ZONES TO BE 7/8" DIA. STEEL ROD 4'-0" LONG, SPACED 12" ON CTR. AND 4" FROM SIDES.



FIXTURE SCHEDULE				
SYMBOL	FIXTURE	TRAP SIZE	VENT SIZE	WATER
WC-1	WATER CLOSET	4"	1 1/2"	1/2"
WC-2	WATER CLOSET	4"	1 1/2"	1"
L-1	LAVATORY	1 1/2"	1 1/4"	1/2"
L-2	LAVATORY	1 1/2"	1 1/4"	1/2"
L-3	LAVATORY	1 1/2"	1 1/4"	1/2"
L-4	SHOWER SINK	1 1/2"	1 1/4"	1/2"
WS-1	WASH	1 1/2"	1 1/4"	1"
WS-2	WASH	1 1/2"	1 1/4"	1"
CS-1	COUNTER SINK	1 1/4"	1 1/4"	1/2"
CS-2	"	1 1/4"	1 1/4"	1/2"
CS-3	"	1 1/4"	1 1/4"	1/2"
CS-4	"	1 1/4"	1 1/4"	1/2"
D-1	DRENAL	2"	1 1/2"	3/4"
D-2	DRENAL	2"	1 1/2"	1/2"
S-1	SHOWER	1 1/2"	1 1/4"	1/2"
S-2	SHOWER HEAD	-	1 1/2"	1/2"
D-R	DRINK ROOM	1 1/8"	1 1/8"	1/2"
SS-1	SERVICE SINK	3"	1 1/2"	1/2"

NOTE: SERVICE SINKS SHALL BE STANDARD ACCO #1105 22" x 20" ACID RESISTING ENAMEL WITH LAMINAR 1/4" x 1/4" DOUBLE FACET 1/2" TRAP STANDARD AND 1/4" x 1/4" 1/2" GRABER

PLOT PLAN & DETAILS

DATE: APRIL 6/62

DRAWN BY: B.L.

CHECKED BY:

JOHN H. ROSS  
1364

BARNETT & RIEDER ARCHITECTS

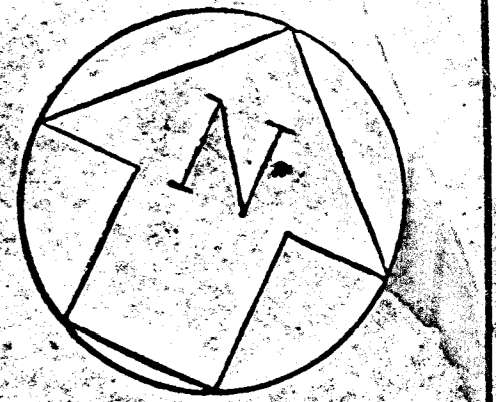
ADDITION TO UXBRIDGE COMPOSITE SCHOOL UXBRIDGE ONTARIO

SCALE: AS NOTED

JOB: 1-322-2

SHEET: P-1

1 2 3 4 5 6 7 8 9 10 11 12 13 14 15 16 17 18 19



A

B

C

D

A

Ay

Az

B

C

Cy

D

Dx

Dy

E

Ey

Ez

F

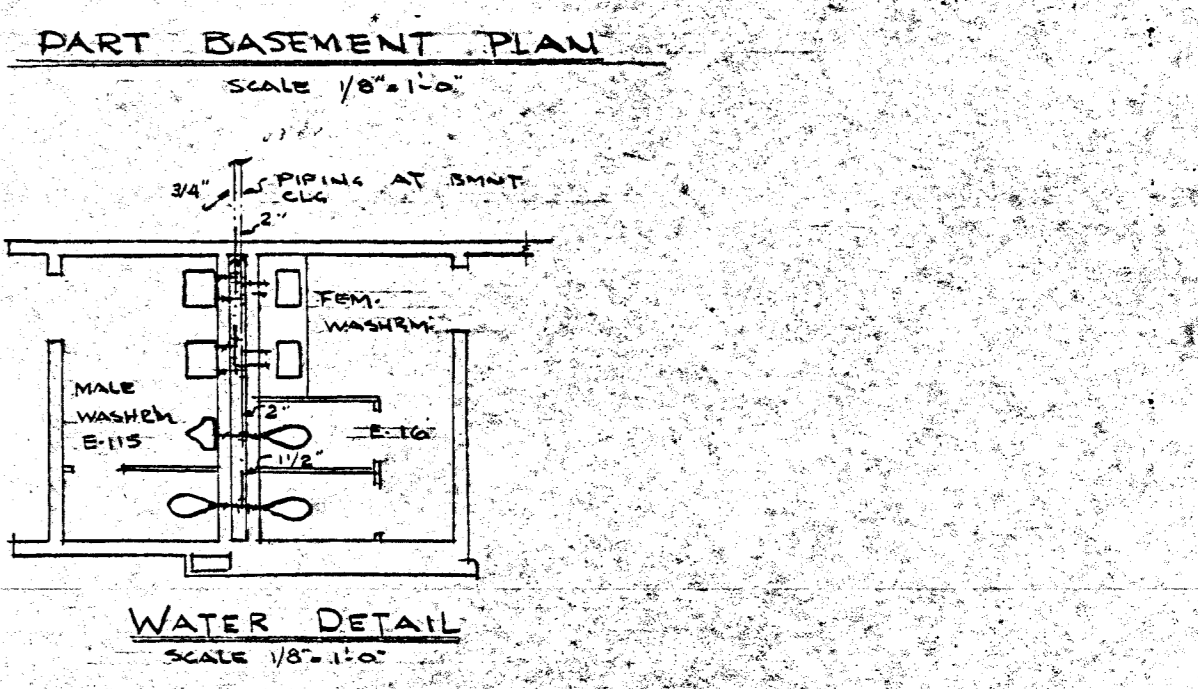
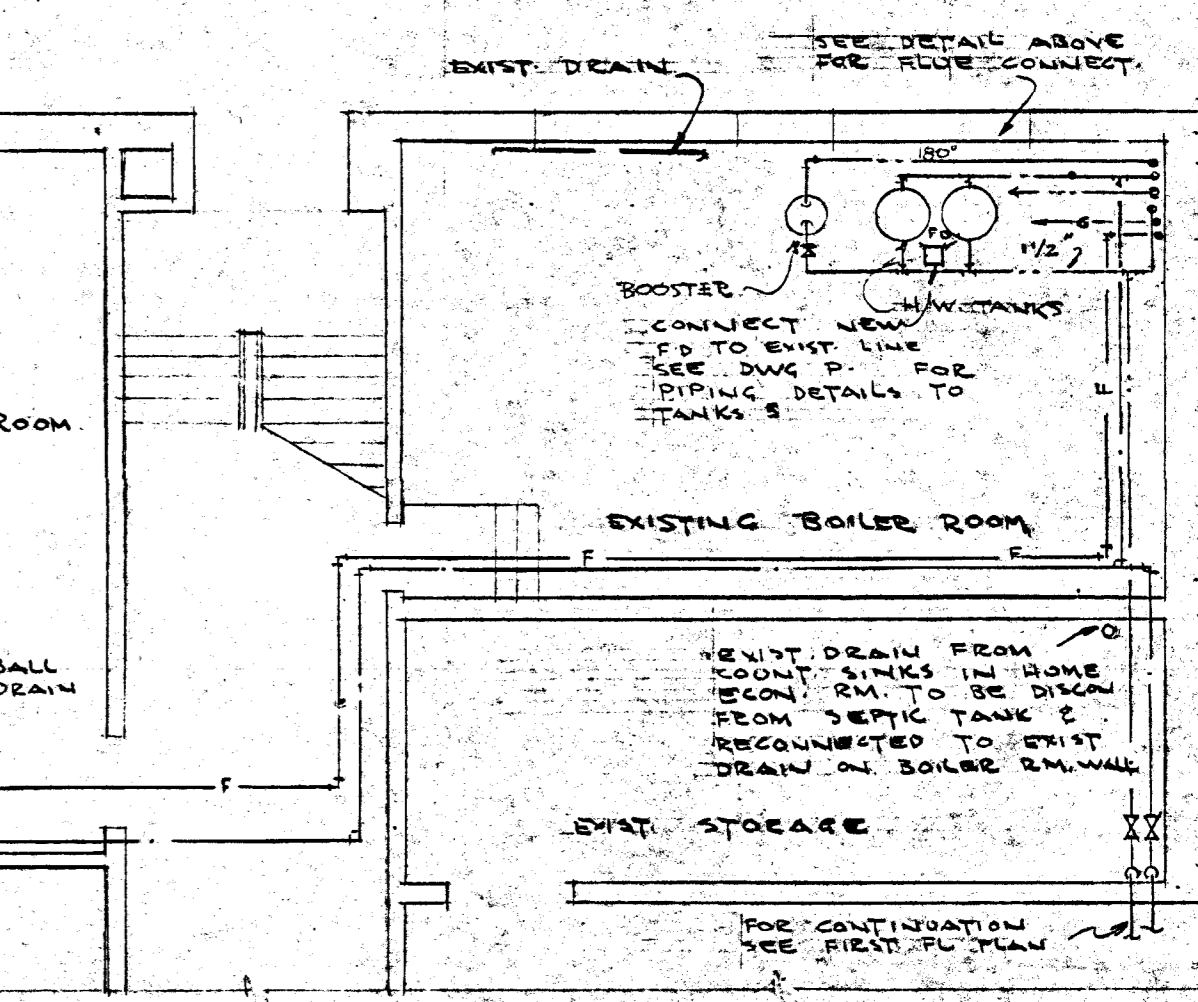
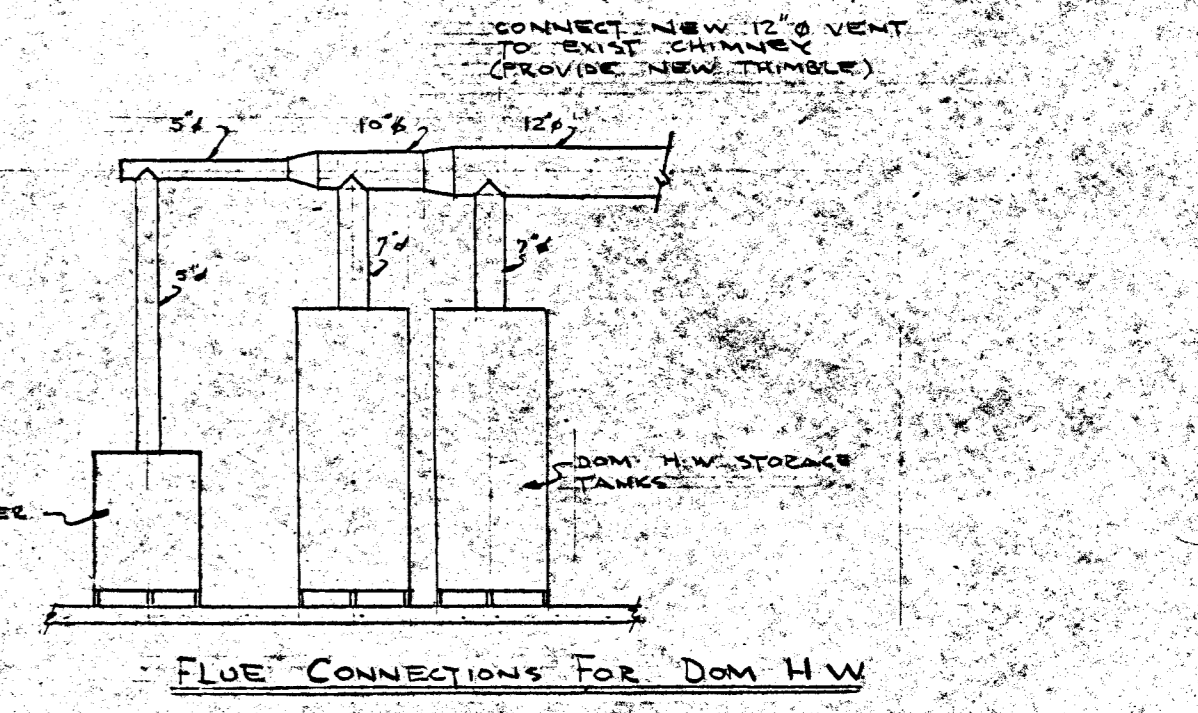
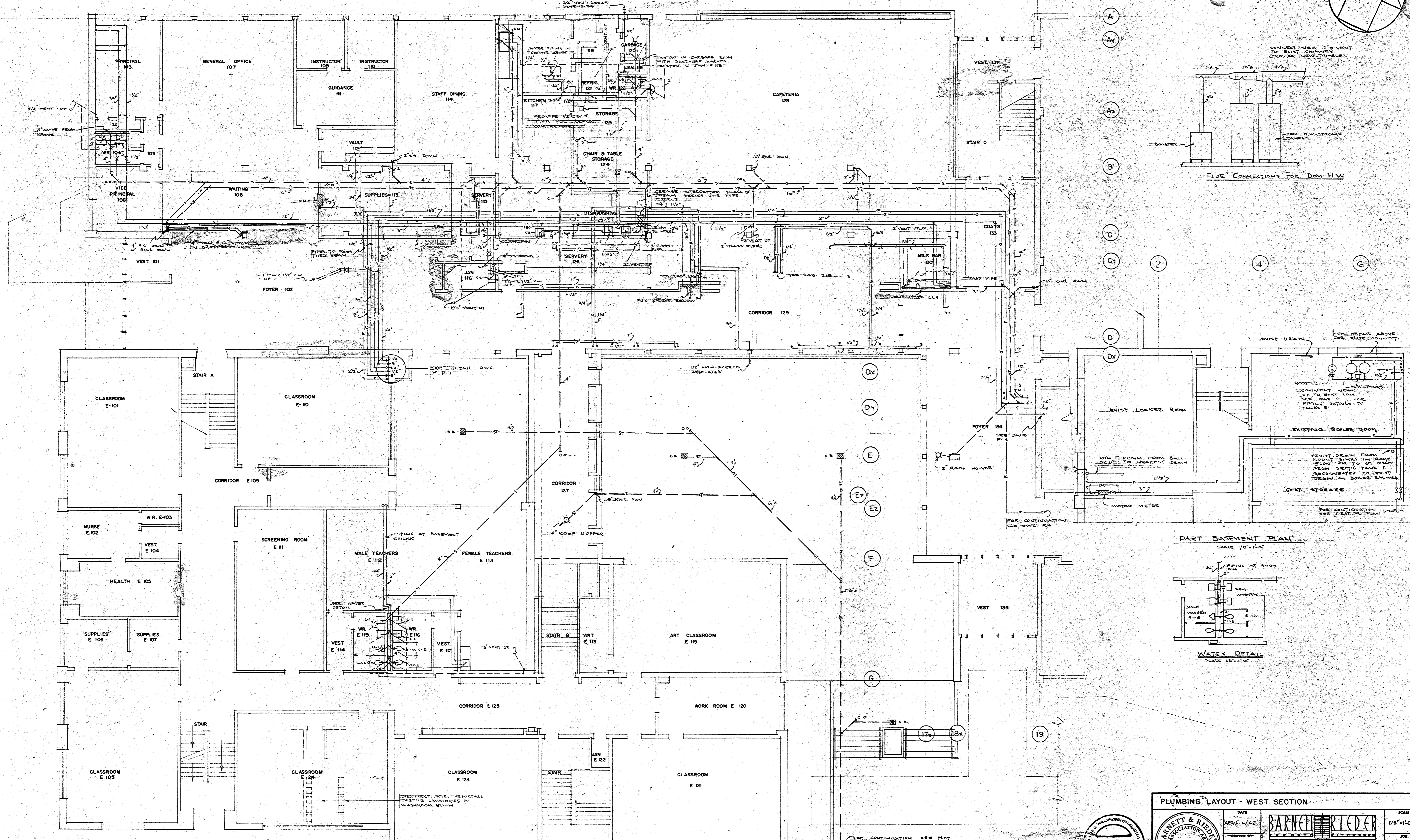
Fy

G

2

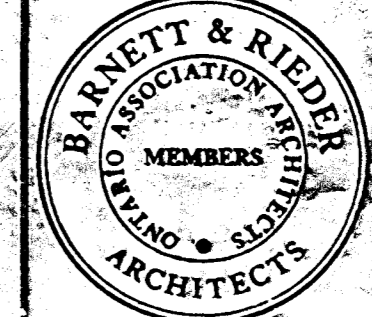
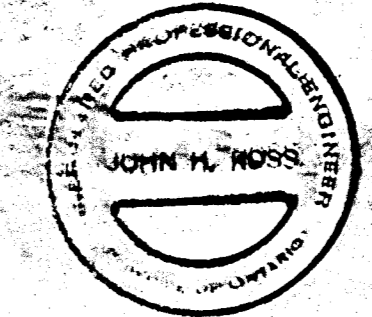
4

6



FIRST FLOOR PLAN

PLUMBING LAYOUT - WEST SECTION		DATE	APRIL 6/62	SCALE	1/8" = 1'-0"
DRAWN BY		BY	JOHN H. WOODS	JOB	J-322-2
CHECKED BY		BY	JOHN H. WOODS	SHEET	P-2
PROJECT		ADDITION TO UXBRIDGE COMPOSITE SCHOOL		UXBRIDGE ONTARIO	



1 2 3 4 5 6 7 8 9 10 11 12 13 14 15 16 17 18 18x 19

A

B

C

D

A

Az

Cy

Dx

Dy

E

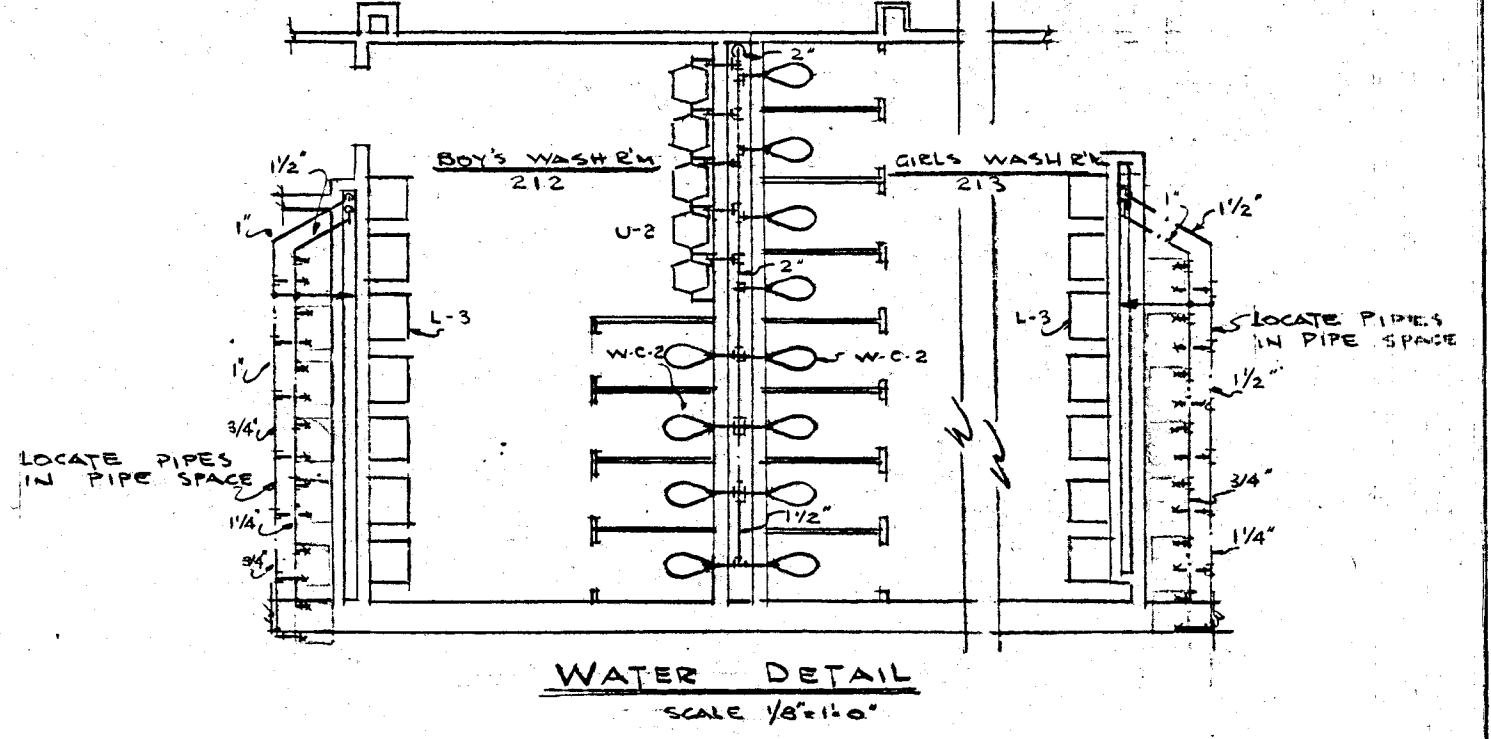
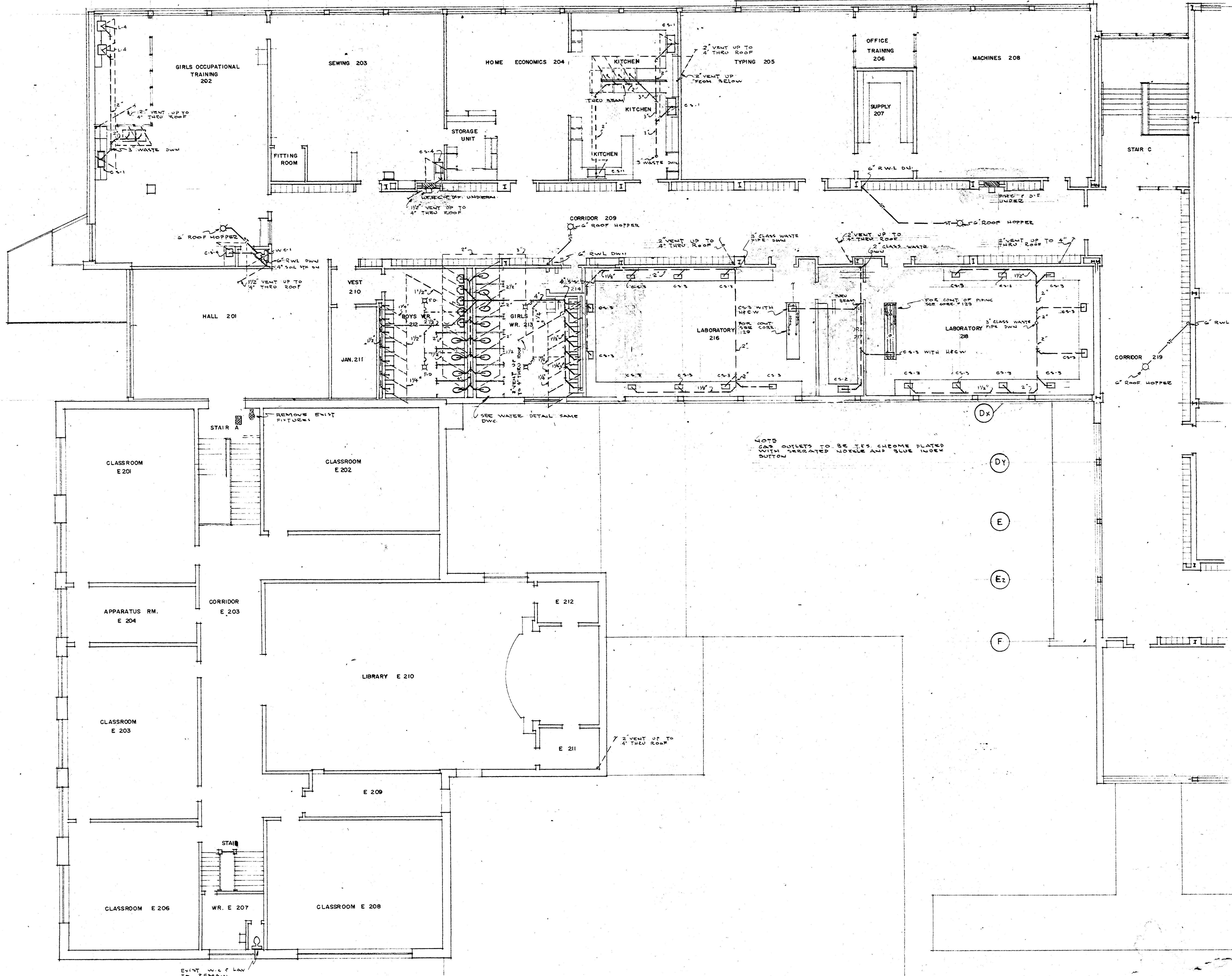
Ez

F

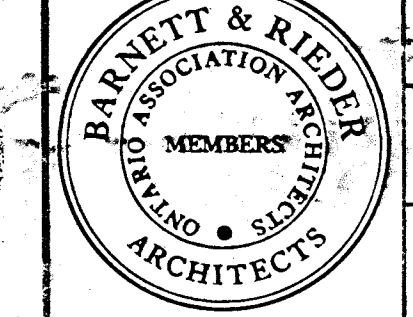
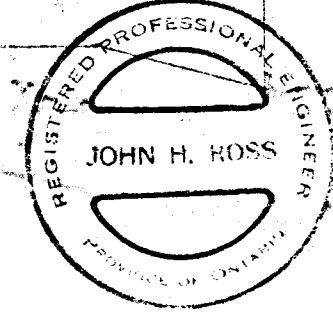
Ey

F

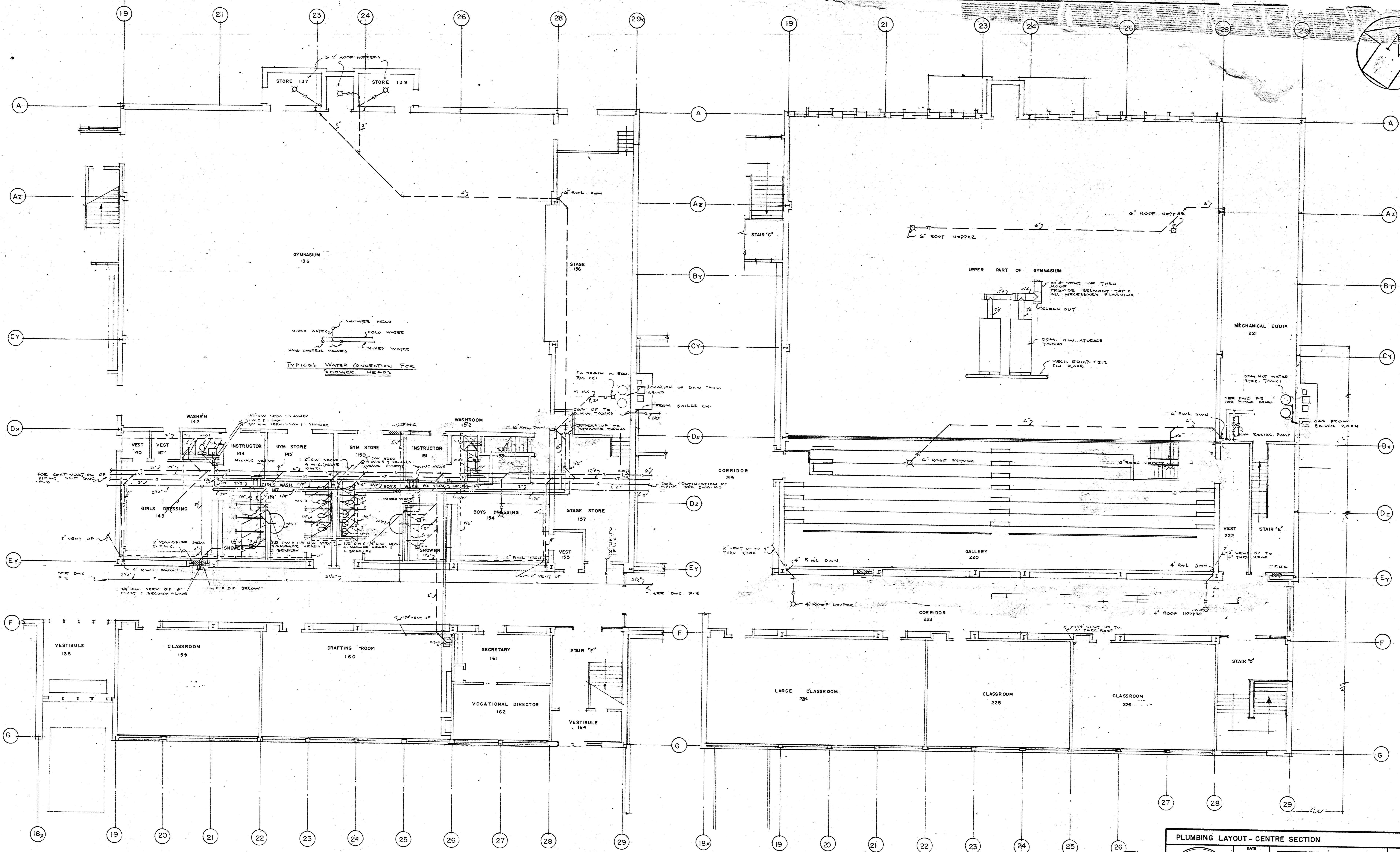
G



SECOND FLOOR PLAN



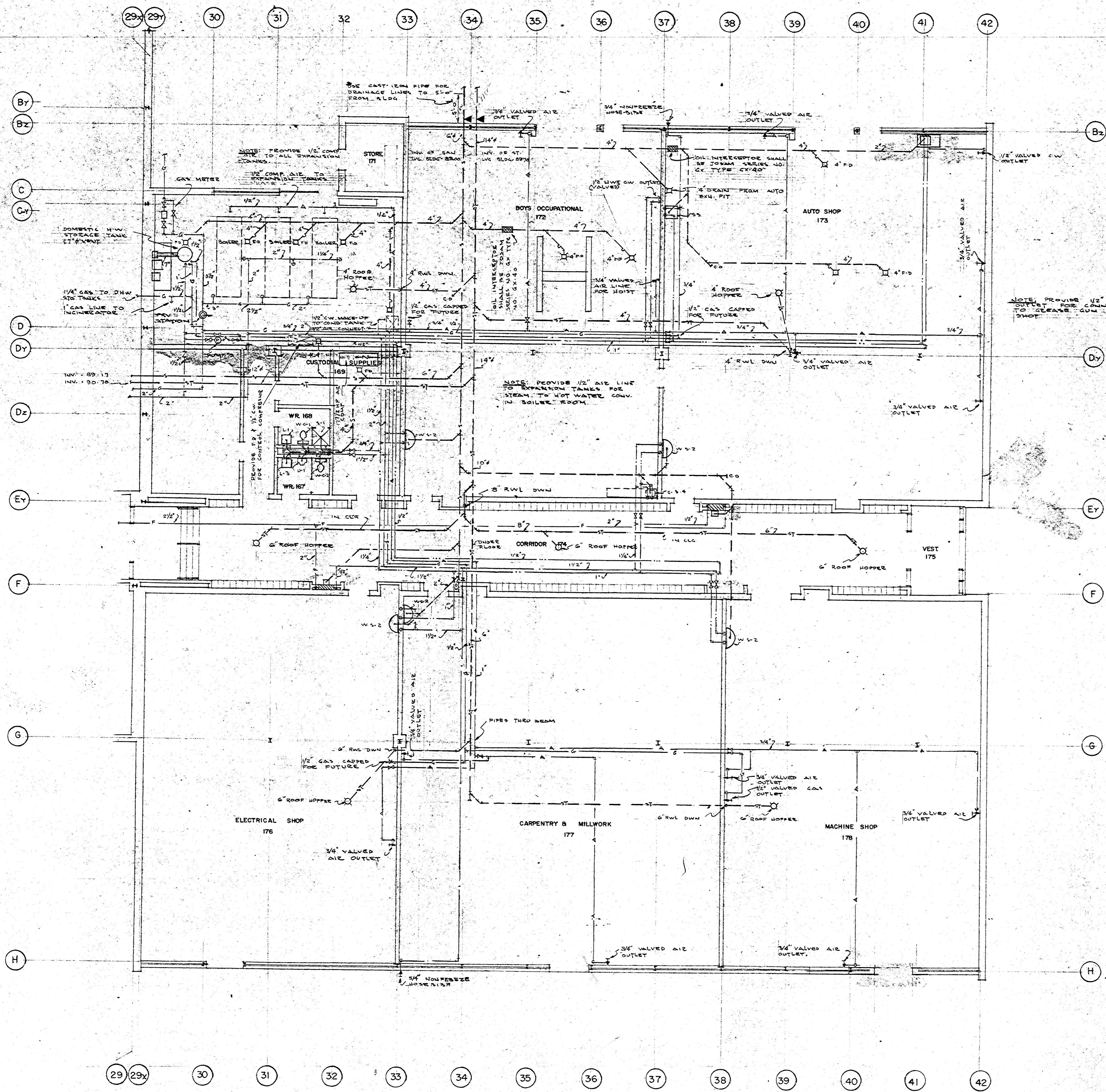
PLUMBING LAYOUT - WEST SECTION			SCALE
DATE	APRIL 6/62	DRAWN BY	DL
CHECKED BY		JOB	1-322-2
ADDITION TO UXBRIDGE COMPOSITE SCHOOL UXBRIDGE ONTARIO			SHEET
			P-3



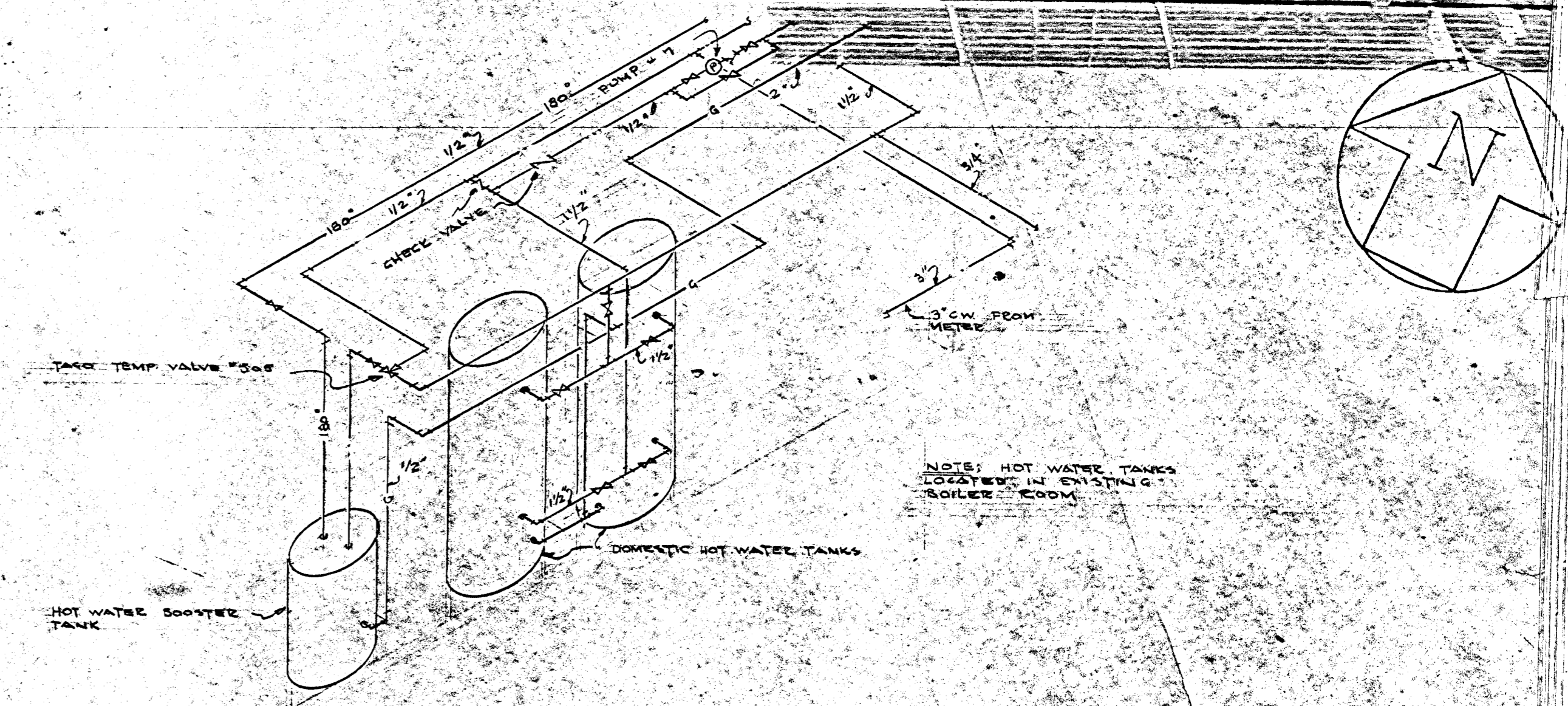
FIRST FLOOR PLAN

SECOND FLOOR PLAN

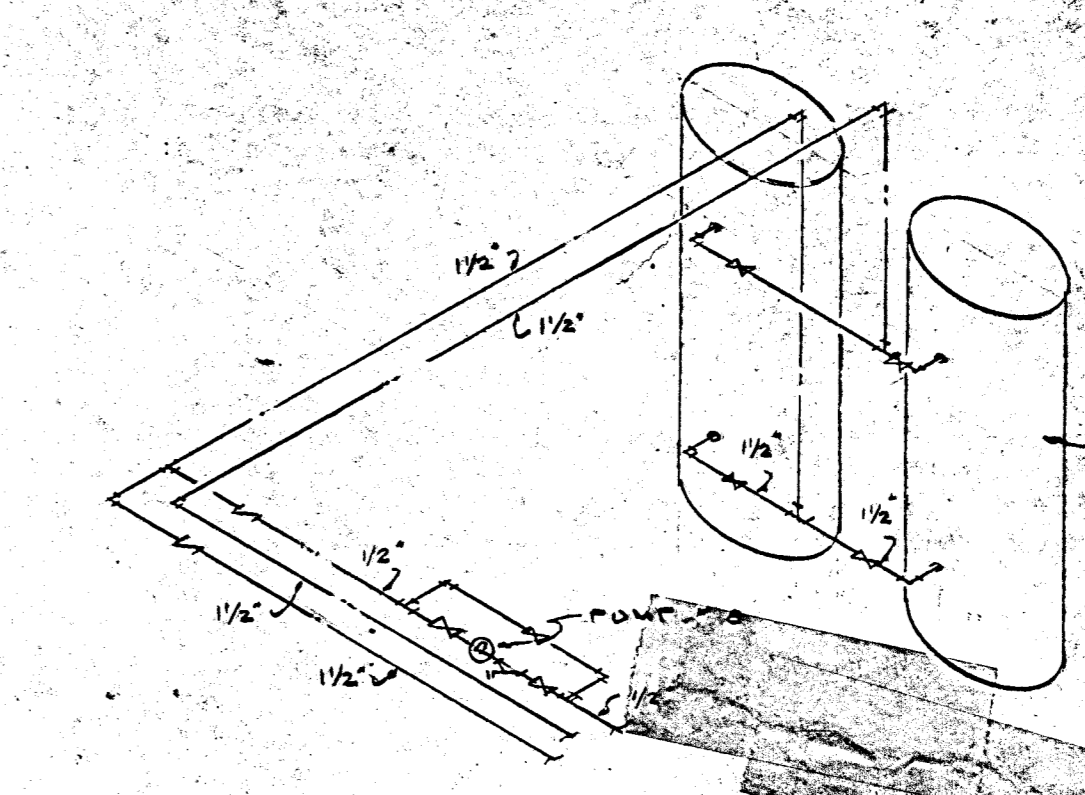
	<b>PLUMBING LAYOUT - CENTRE SECTION</b>		SCALE 1/8" = 1'-0"
	DATE APRIL 6/42		JOB 4-322-2
	DRAWN BY B.L.	CHECKED BY B.L.	SHEET P-4
	ADDITION TO UXBRIDGE COMPOSITE SCHOOL UXBRIDGE ONTARIO		



SHOP FLOOR PLAN

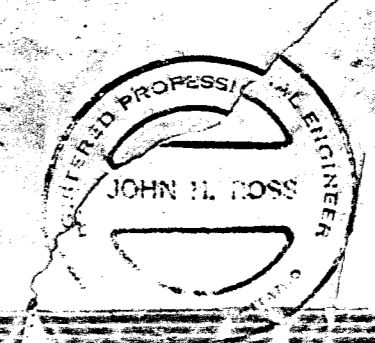


Piping Detail For New Dom Hot Water Tanks



Piping Detail For Dom Hot Water Tanks

NOTE: 7 1/2 HP AIR COMPRESSOR CAPACITY 285 CFM @ 175 LBS. 80 GALLON TANK. NO. VA. 5006. 2 1/2" SW MOTOR VALVE & BELT GUARD



PLUMBING LAYOUT - EAST SECTION

DATE: APR 12/42

DRAWN BY: B.L.L.

CHECKED BY:

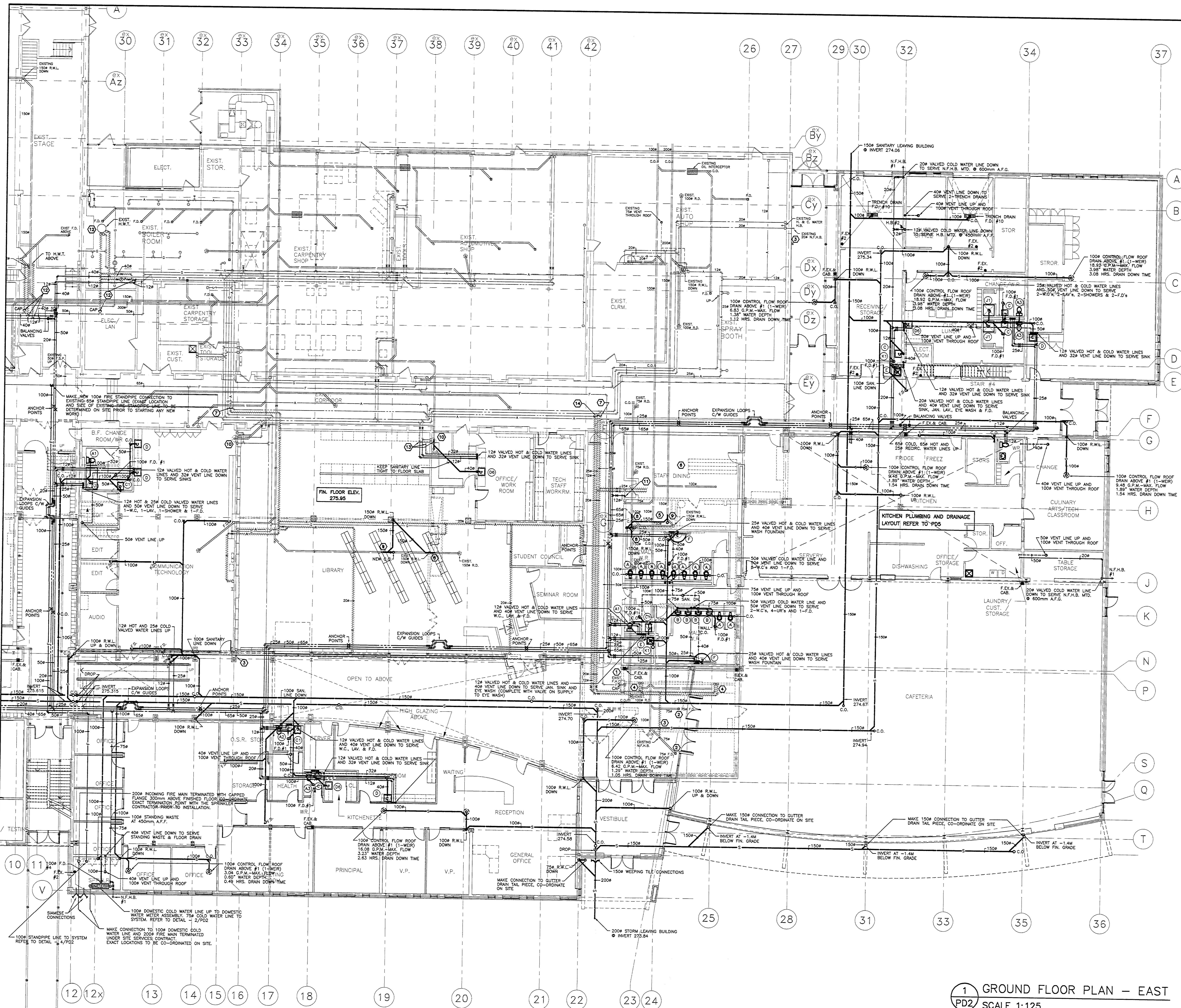
SCALE: 1/8" = 1'-0"

1-322-2

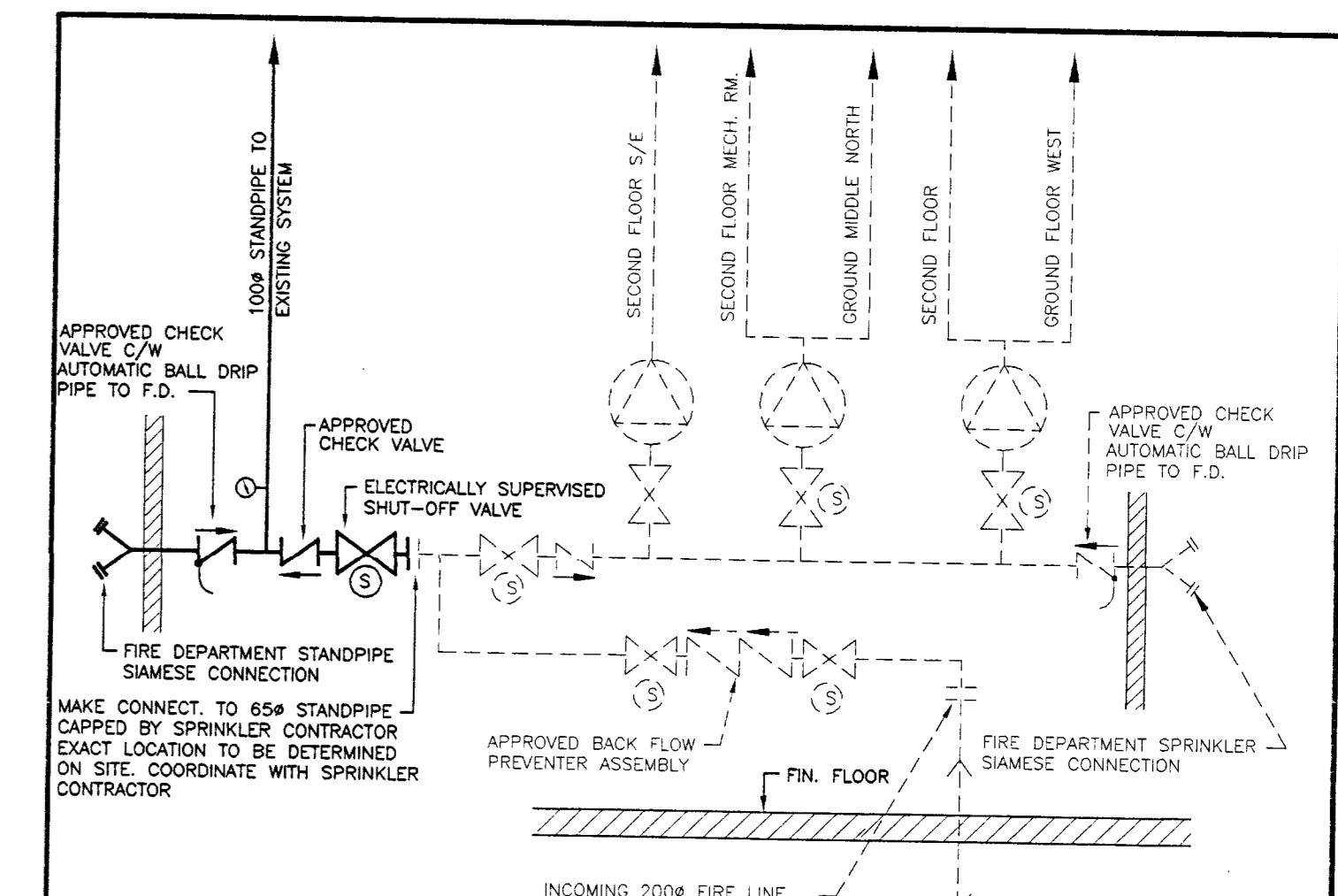
BARNETT & RIEDER ARCHITECTS

ADDITION TO UXBRIDGE COMPOSITE SCHOOL

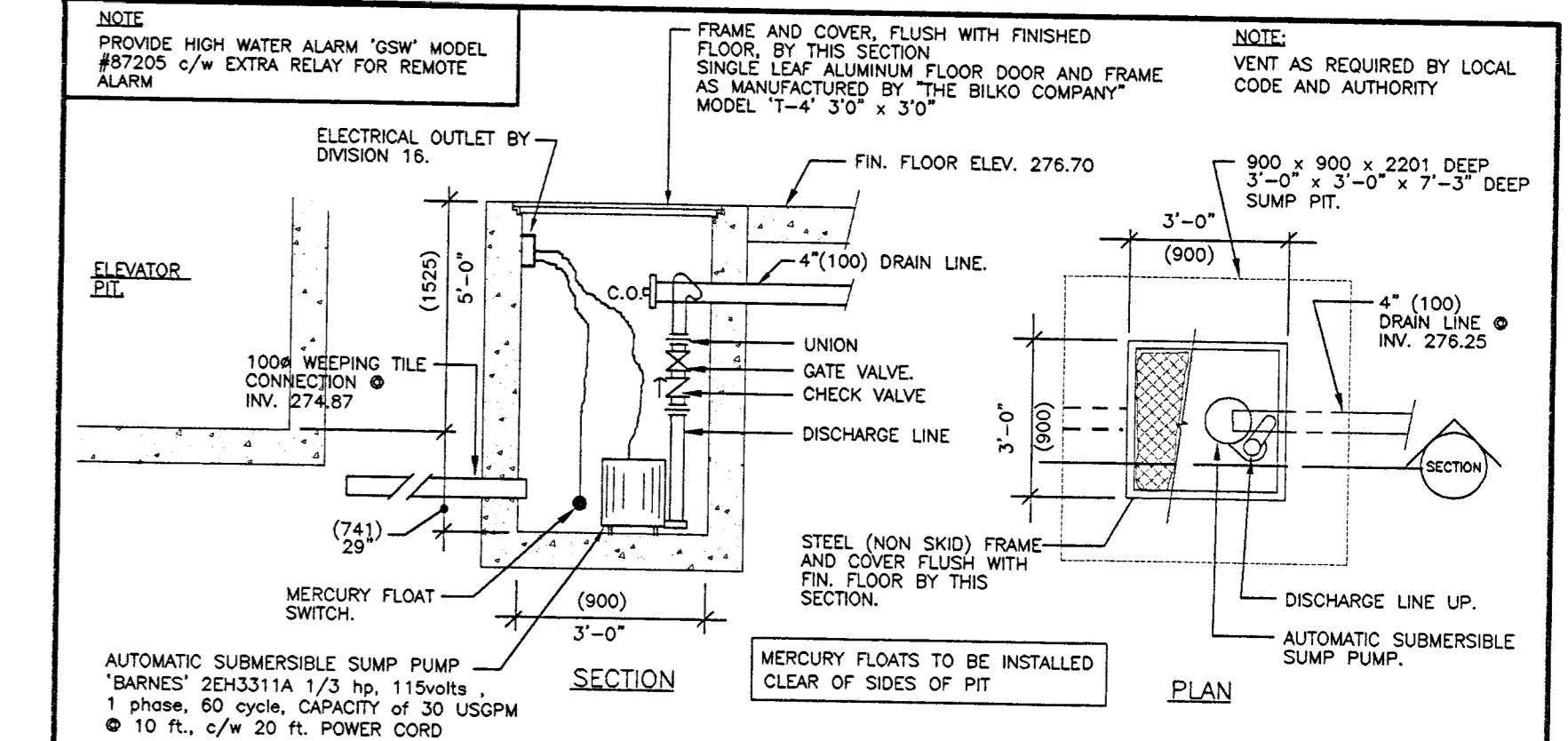




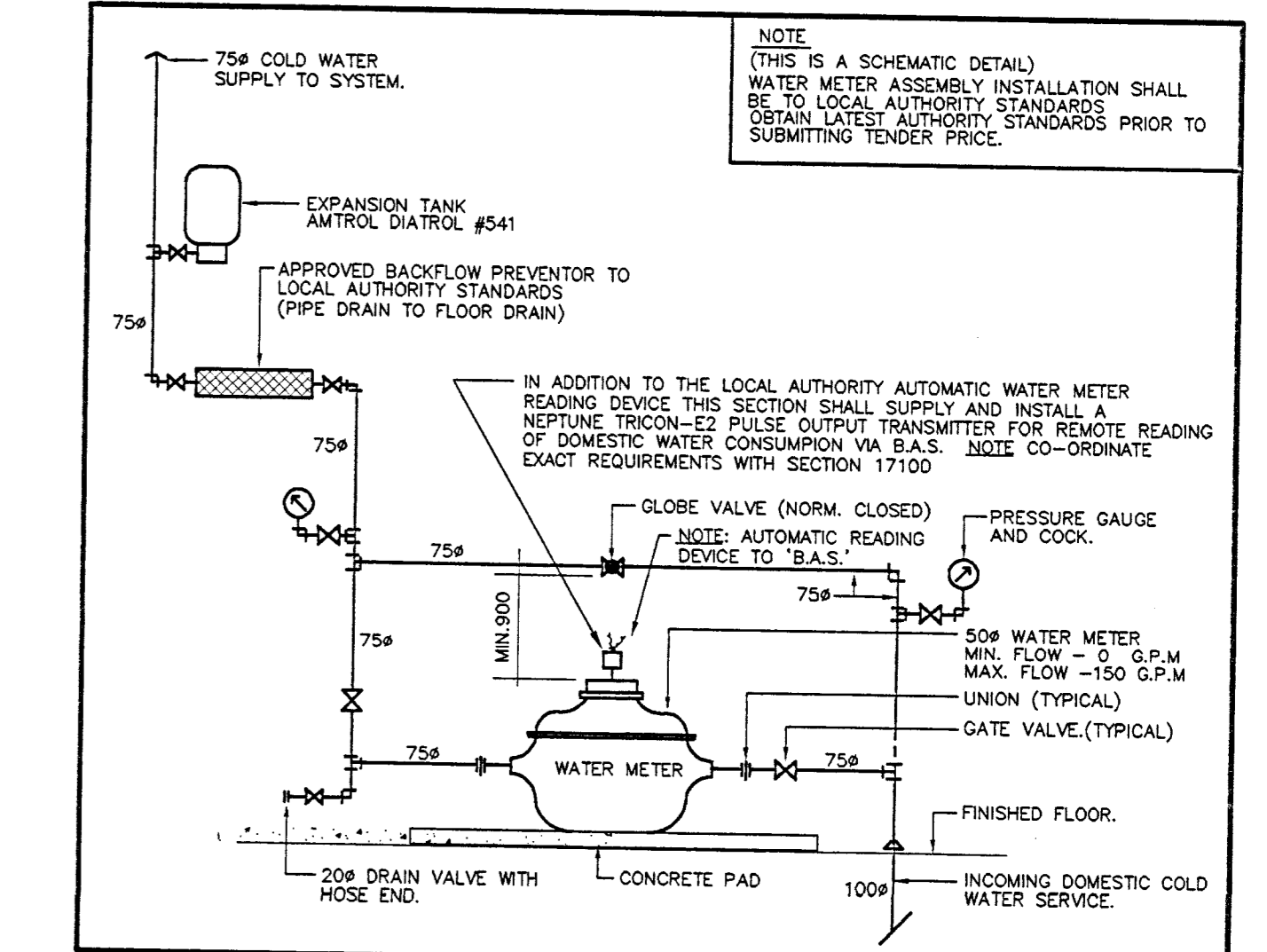
- GENERAL NOTES:**
- EXISTING P.H.C. TO BE REMOVED, CAP FIRE LINE HIGH IN CEILING SPACE AND REMOVE ALL REDUNDANT FIRE LINES (EXACT LOCATION TO BE DETERMINED ON SITE)
  - EXISTING FLOOR DRAIN TO BE REMOVED, CAP SANITARY LINE BELOW FINISHED FLOOR, CAP ASSOCIATED VENT LINE HIGH IN CEILING SPACE, REMOVE ALL REDUNDANT PIPING.
  - EXISTING HOSE BIBB TO BE REMOVED, REMOVE ALL ASSOCIATED REDUNDANT WATER PIPING.
  - EXISTING SINK AND INTERCEPTOR TO BE REMOVED, CAP SANITARY LINE FLUSH WITH FINISHED FLOOR, CAP VENT LINE HIGH IN CEILING SPACE, REMOVE ALL REDUNDANT HOT AND COLD WATER LINES.
  - REMOVE W.C., LAV., F.O., ETC. IN EXIST. WASHROOM CAP SANITARY LINES FLUSH WITH FINISHED FLOOR, CAP VENT LINE HIGH IN CEILING SPACE, REMOVE ALL REDUNDANT HOT AND COLD WATER LINES.
  - REMOVE ALL EXISTING PLUMBING FIXTURES IN ROOM (SINKS, TUBS, LAUNDRY TUB, WASHER BOX ETC.) AND CAP SANITARY LINES FLUSH WITH FINISHED FLOOR, CAP VENT AND WATER LINES HIGH IN CEILING SPACE, REMOVE ALL REDUNDANT HOT & COLD WATER LINES (VISIT SITE TO DETERMINE EXACT NUMBER OF FIXTURES)
  - CAP EXISTING SERVICES HIGH IN CEILING SPACE, REMOVE ALL REDUNDANT PIPING AS REQUIRED.
  - MAKE NEW CONNECTION TO EXISTING R.W.L. HIGH IN CEILING SPACE AND EXTEND, REMOVE ALL REDUNDANT PIPING (REFER TO DMS FOR PIPE SIZE).
  - MAKE NEW CONNECTION TO EXISTING STORM LINE COMPLETE WITH NEW CLEAN OUT, EXACT LOCATION DETERMINED ON SITE PRIOR TO STARTING ANY NEW WORK.
  - EXISTING WASH FOUNTAIN TO BE REMOVED, CAP SANITARY LINE FLUSH WITH FINISHED FLOOR, CAP VENT HOT AND COLD WATER LINES HIGH IN CEILING SPACE, REMOVE ALL REDUNDANT VENT, HOT & COLD WATER LINES.
  - MAKE NEW 1/2" VALVED HOT & COLD WATER AND 3/4" VENT LINE CONNECTIONS TO EXIST. SERVICES HIGH IN CEILING SPACE (EXACT LOCATION AND SIZE OF EXISTING SERVICES TO BE DETERMINED ON SITE PRIOR TO STARTING ANY NEW WORK)
  - MAKE NEW 1/2" VALVED HOT & COLD WATER AND 3/4" VENT LINE CONNECTIONS TO EXIST. SERVICES HIGH IN CEILING SPACE (EXACT LOCATION AND SIZE OF EXISTING SERVICES TO BE DETERMINED ON SITE PRIOR TO STARTING ANY NEW WORK)



4 SCHEMATIC DETAIL OF STANDPIPE ALARM VALVE ARRANGEMENT AT SPRINKLER HEADER N.T.S.



3 SCHEMATIC DETAIL OF ELEVATOR WEEPING TILE SUMP PIT AND PUMP N.T.S.



2 SCHEMATIC DETAIL OF DOMESTIC WATER METER ASSEMBLY N.T.S.

1 GROUND FLOOR PLAN - EAST SCALE 1:125

NO.	DATE	DESCRIPTION	NO.	DATE	DESCRIPTION
08/01/02		ISSUED FOR PERMIT & TENDER			

NO.	DATE	DESCRIPTION

**NOTES:**

CONTRACTORS MUST CHECK AND VERIFY ALL DIMENSIONS ON THE DRAWING FOR ANY DISCREPANCIES TO THE ARCHITECT BEFORE PROCEEDING WITH THE WORK.

ALL PRINTS AND SPECIFICATIONS ARE THE PROPERTY OF THE ARCHITECT AND MUST BE RETURNED AT THE COMPLETION OF THE WORK.

DRAWING SHOULD NOT BE SCALED

**CONSULTANT:**  
**ELLARD-WILSON ARCHITECTS**  
 800 TOWN CENTRE BLVD., SUITE 808  
 MARKHAM, ONTARIO L3R 9S8  
 TEL: (905) 949-3100 FAX: (905) 949-3119

**SEAL:**  
 N. C. DIZON  
 PROFESSIONAL ENGINEER  
 REG. NO. 10702  
 PROVINCE OF ONTARIO

**GREY-NOBLE & GREY-NOBLE**  
 1091 GORDON STREET  
 REXDALE, ONTARIO L3G 7X2  
 TEL: (905) 898-4050  
 FAX: (905) 898-4787

**SEAL:**

**PROJECT:**  
 UXBURGH SECONDARY SCHOOL  
 ADDITION AND RENOVATIONS  
 39 THIRD AVENUE SOUTH  
 UXBURGH, ONTARIO

**DRAWING TITLE:**  
 PLUMBING AND DRAINAGE  
 GROUND FLOOR PLAN - EAST

**PROJECT NUMBER:**  
 011113

**DRAWING NUMBER:**  
 PD2

**DATE:**  
 JULY 2002

**SCALE:**  
 1/125

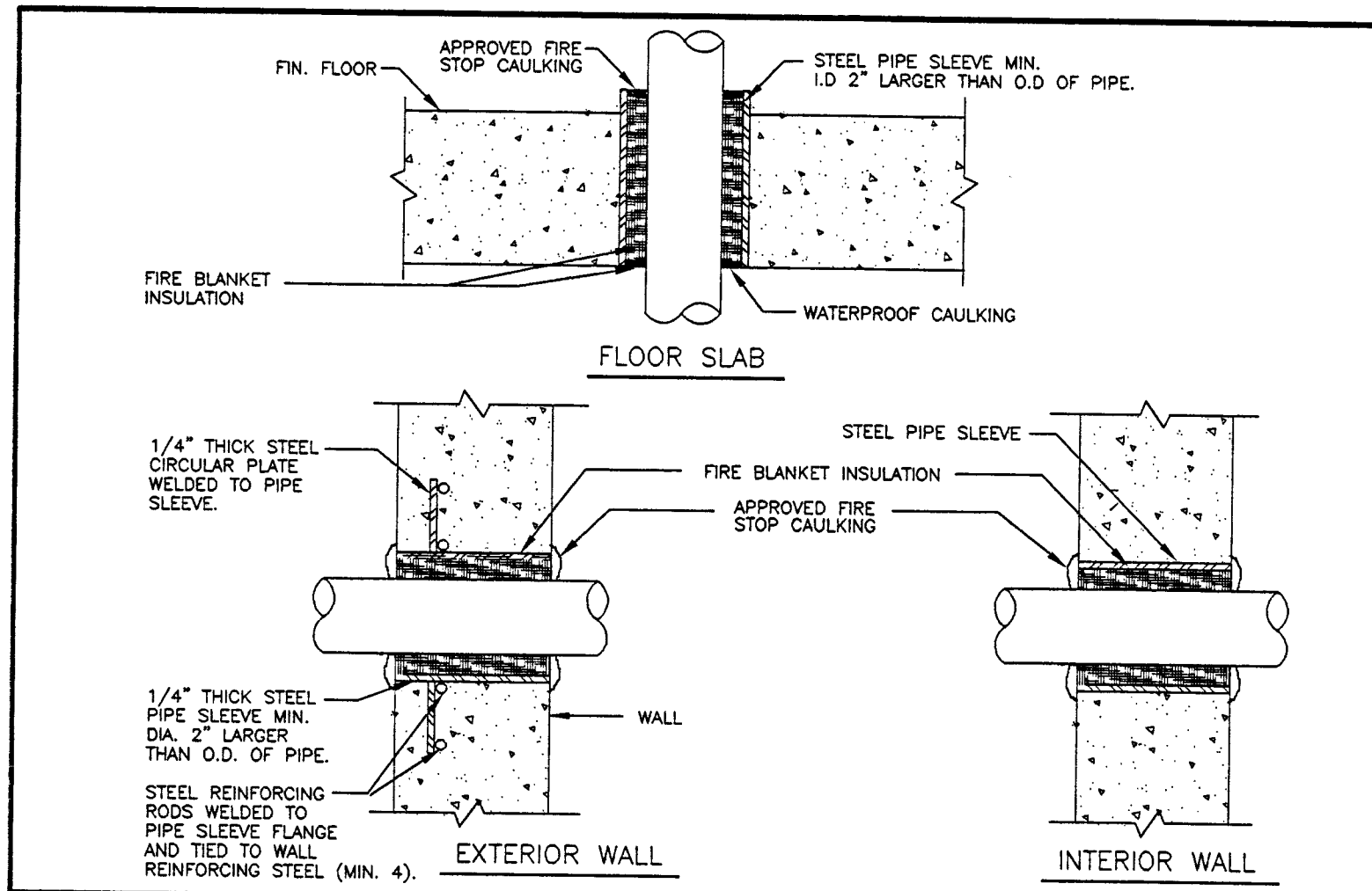
**DRAWN BY:**  
 B. K.

**CHECKED BY:**  
 N. V.

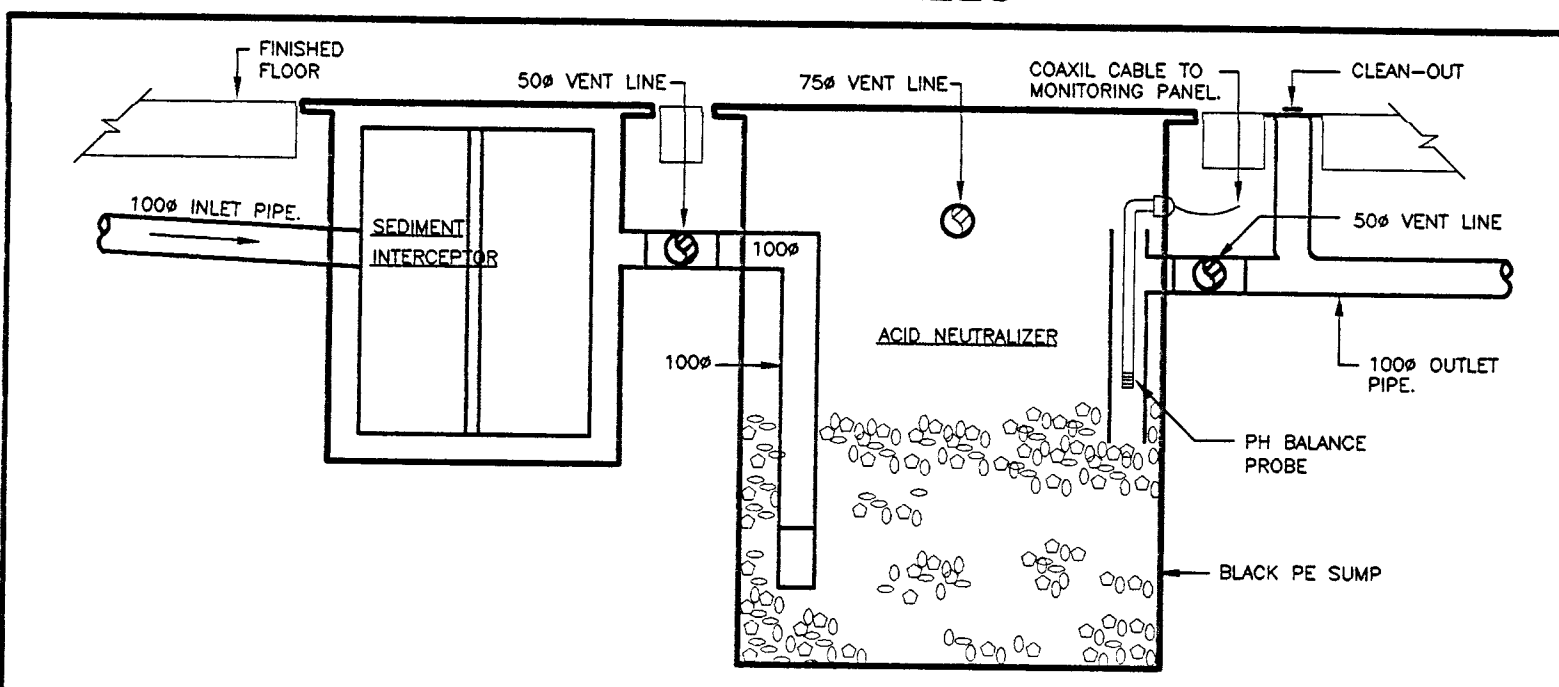
**DATE:**  
 JULY 2002

**01336**

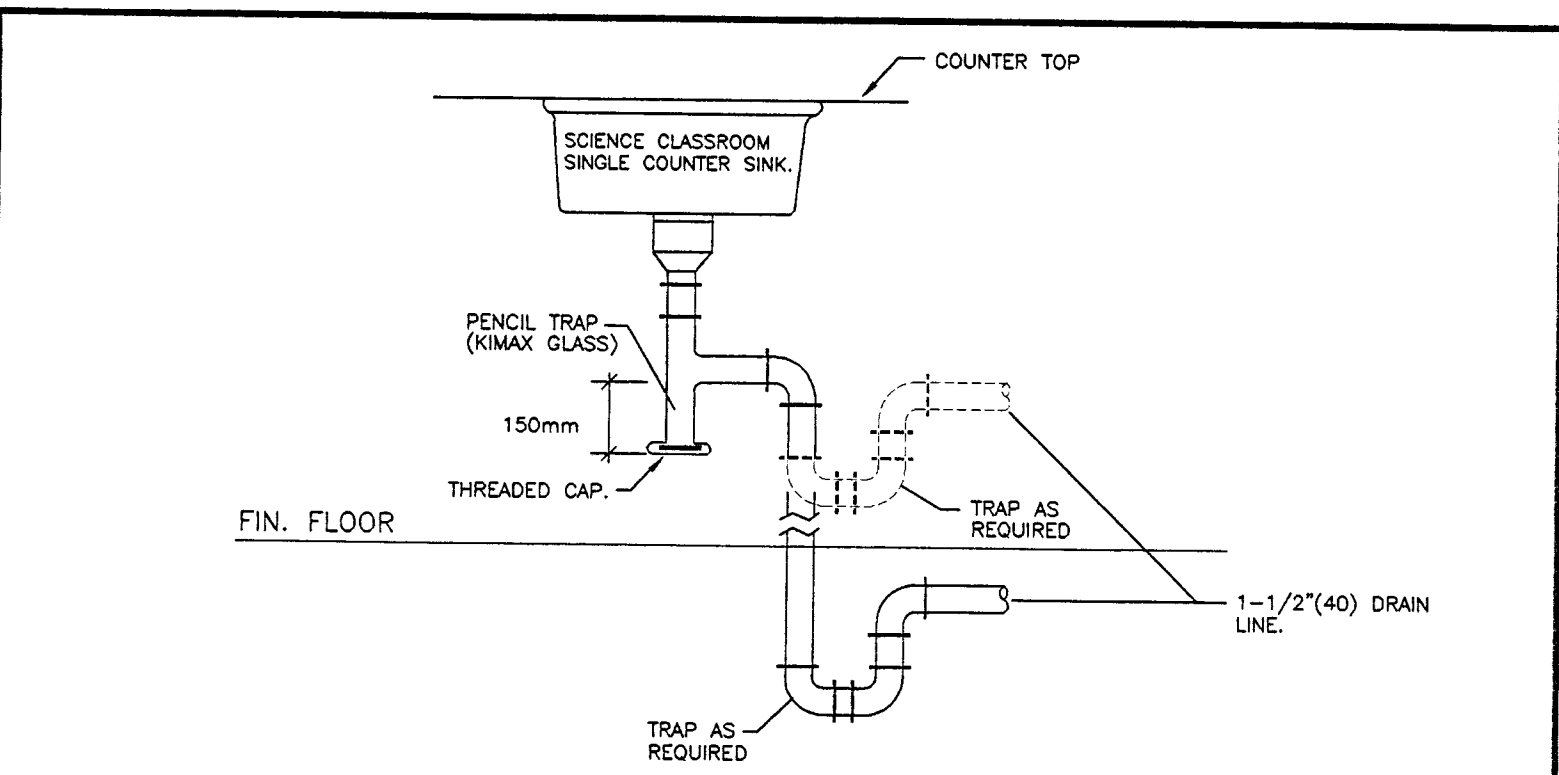
- GENERAL NOTES:**
- 12" HOT & 3/4" COLD VALVED WATER LINES UP FROM BELOW TO TEACHERS BENCH SINK AND EYEWASH AND 25# COLD WATER LINES DOWN TO SERVE STUDENT BENCHES - REFER TO DETAIL 2/PD3. SINK AND EYEWASH TRAP LOCATED IN CEILING BELOW.
  - 12" COLD WATER LINE UP FROM BELOW AND 3/4" VENT LINE DOWN TO SERVE STUDENT BENCH SINK.
  - 12" VALVED HOT & COLD WATER LINES FROM BELOW AND 3/4" VENT LINE DOWN TO SERVE SINK AND EYEWASH (COMPLETE WITH VALVE ON SUPPLY TO EYEWASH).
  - 12" COLD WATER LINE UP FROM BELOW AND 3/4" VENT LINE DOWN TO SERVE CUP SINK.
  - 100# VENT THROUGH ROOF.
  - 75# CR VENT LINE DOWN TO GROUND FLOOR.
  - REMOVE ALL EXISTING PLUMBING FIXTURES IN ROOM 3-101. LAUNDRY TUB W/ WASHER BOX ETC. AND CAP SANITARY AND WATER LINES IN GROUND FLOOR CEILING SPACE. CAP VENT LINES IN GROUND FLOOR CEILING SPACE. REMOVE ALL REDUNDANT PIPING. (VISIT SITE TO DETERMINE EXACT NUMBER OF FIXTURES).



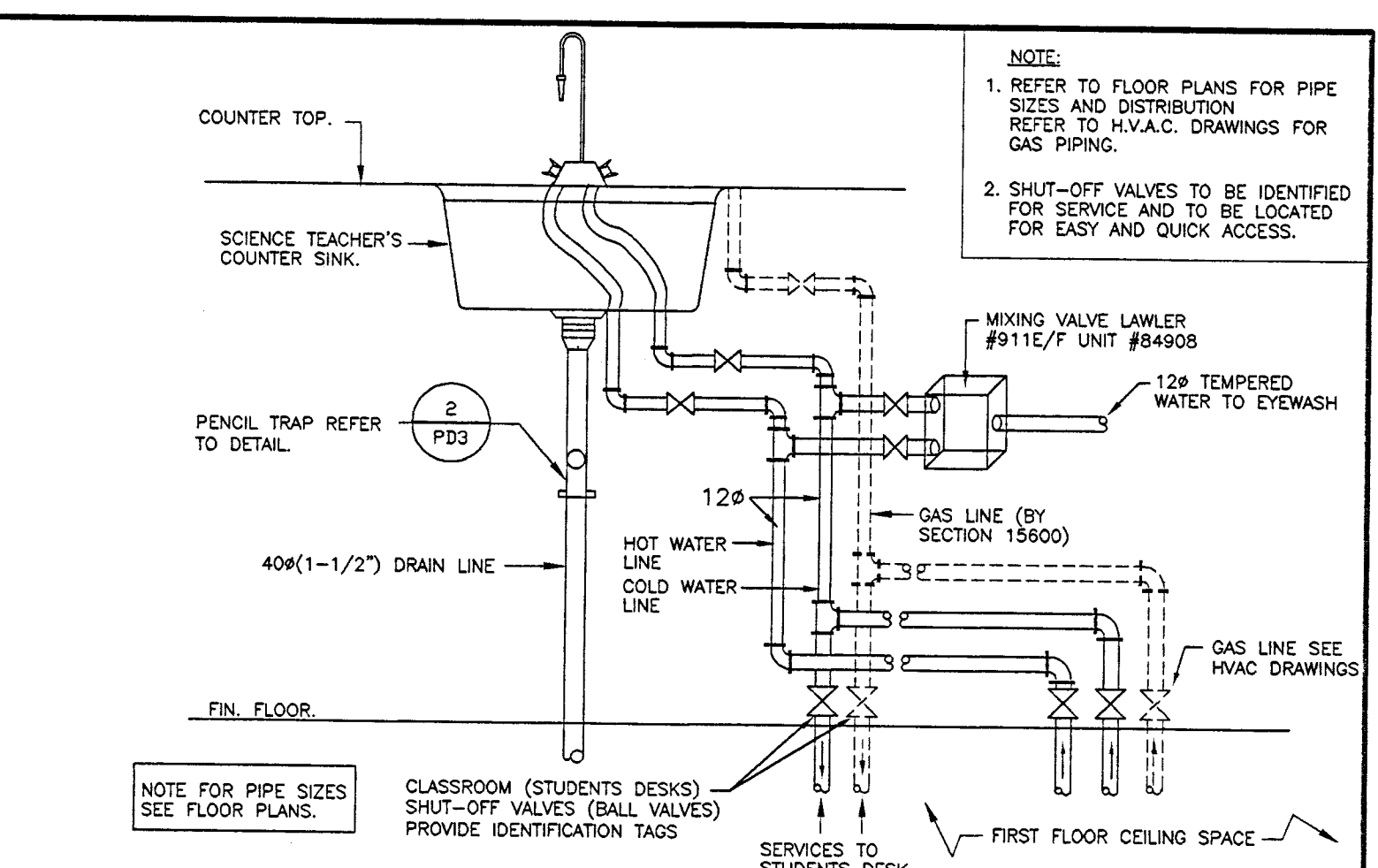
5 DETAIL OF SLEEVE THROUGH FLOOR SLAB INTERIOR AND EXTERIOR WALLS N.T.S.



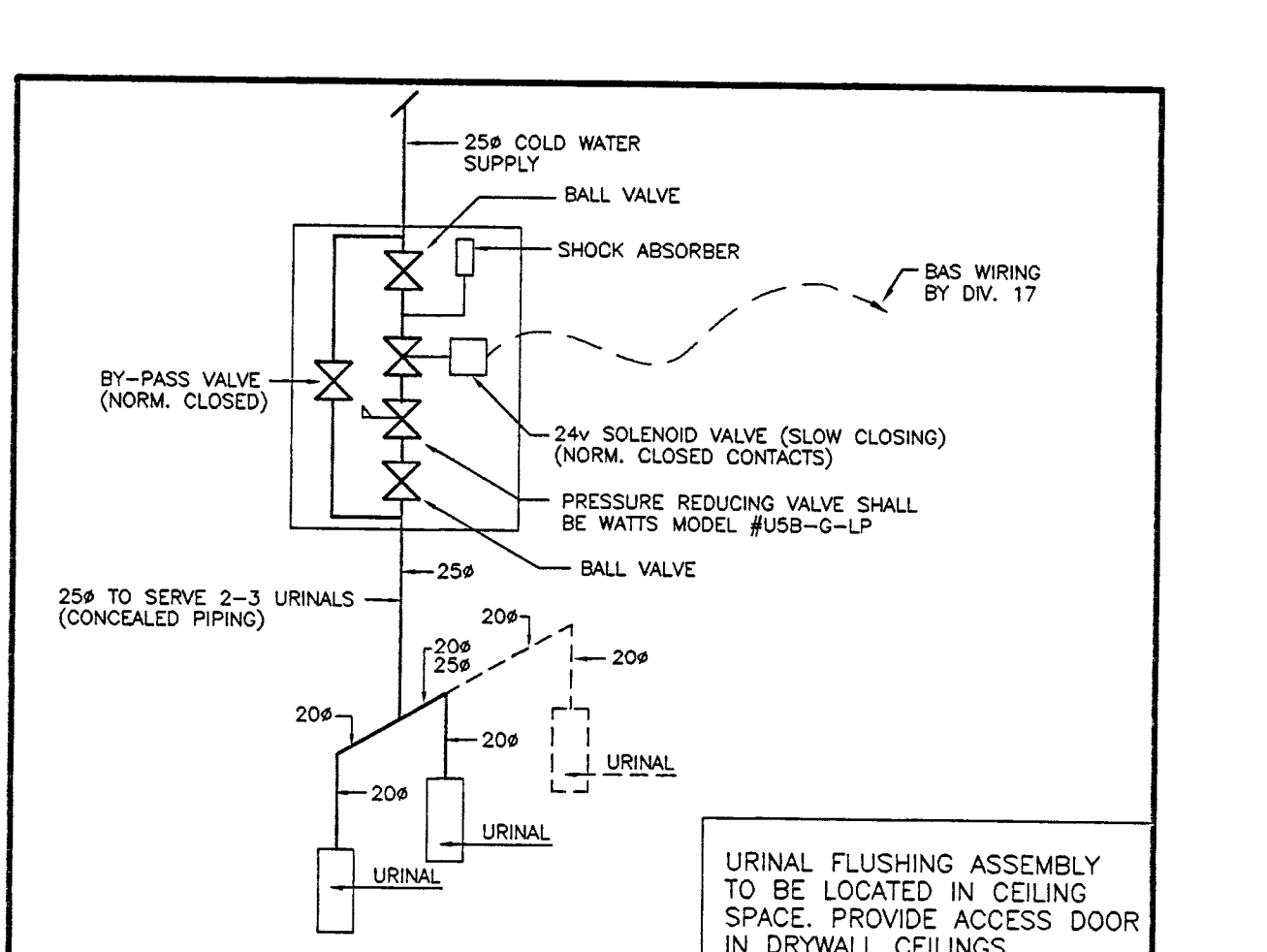
4 SCHEMATIC DETAIL OF ACID NEUTRALIZING SYSTEM N.T.S.



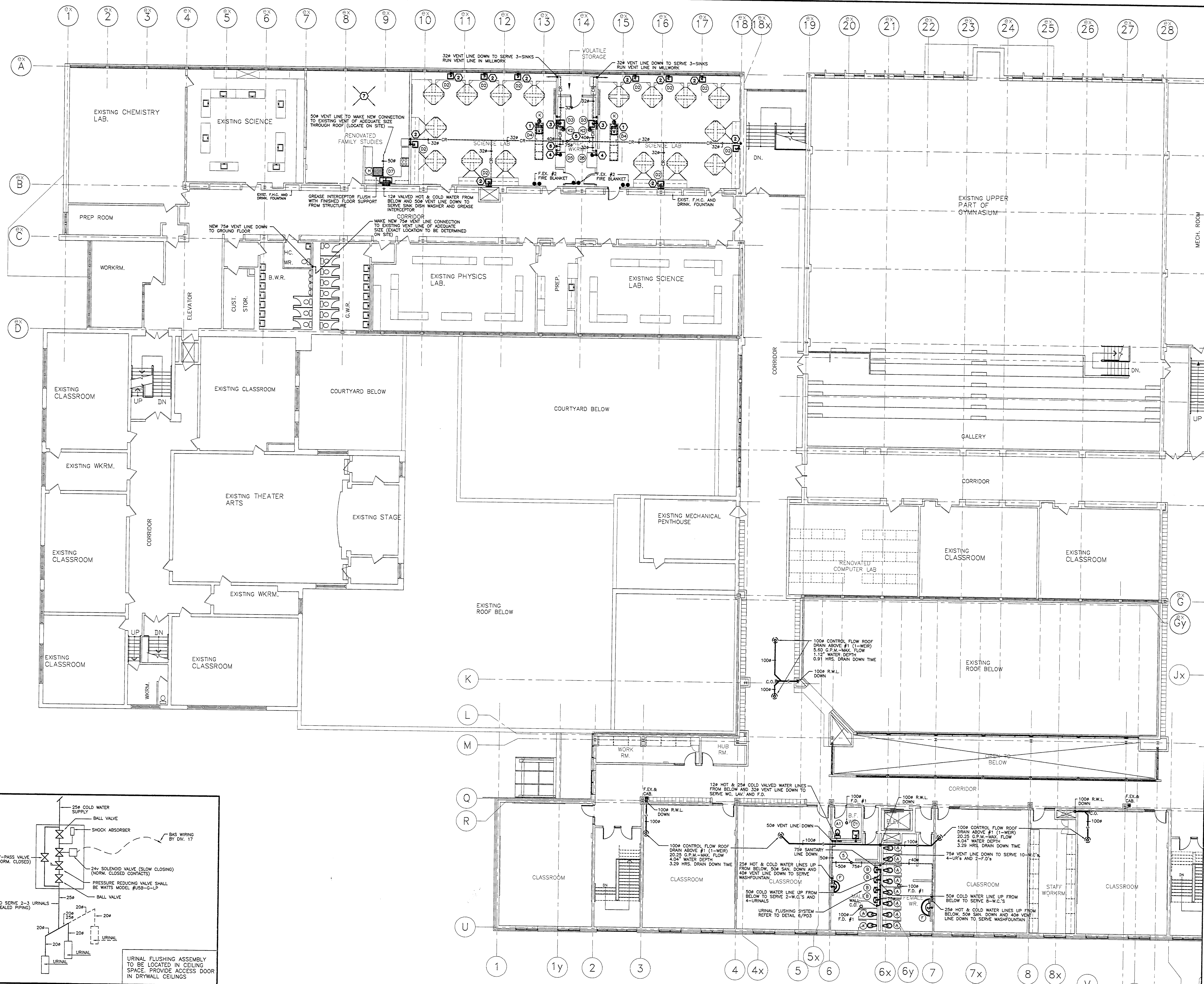
3 SCHEMATIC DETAIL OF SCIENCE CLASSROOM COUNTER SINK TRAP N.T.S.



2 DETAIL OF SCIENCE CLASSROOM SHUT-OFF VALVES AT INSTRUCTOR'S DESK N.T.S.



6 SCHEMATIC DETAIL OF SOLENOID OPERATED URINAL FLUSHING ASSEMBLY. N.T.S.



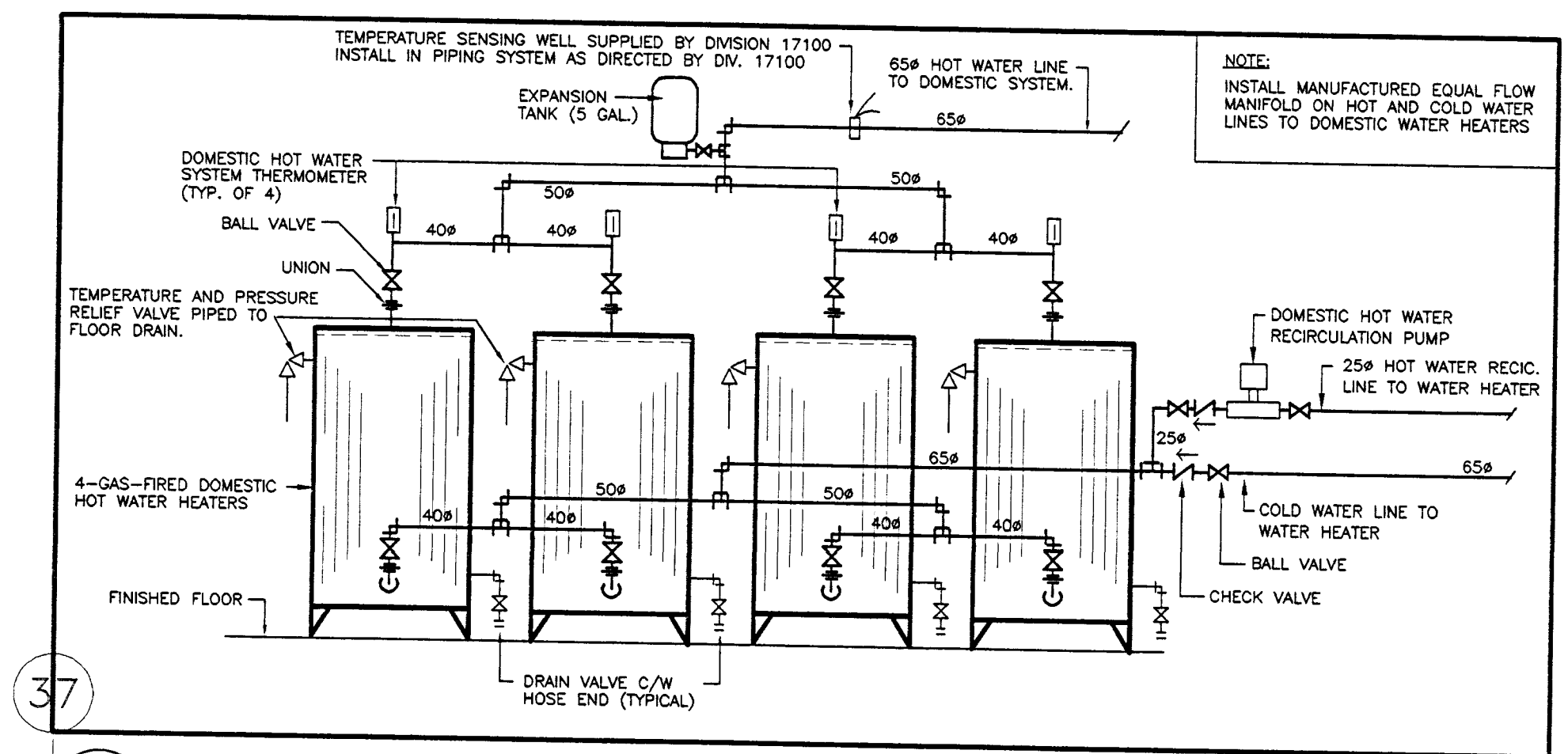
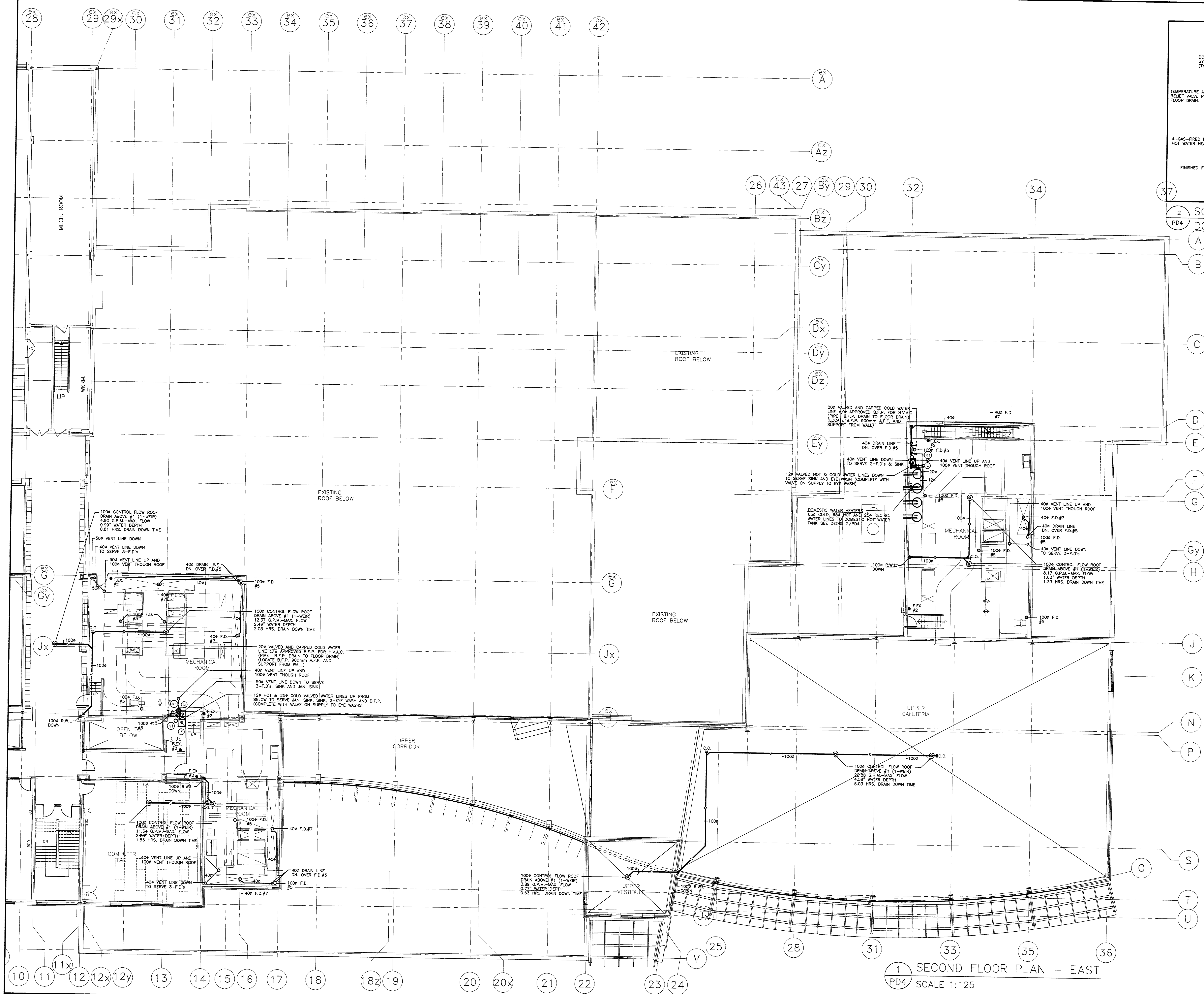
1 SECOND FLOOR PLAN - WEST SCALE 1:125

KEY TO DETAIL LOCATION		REVISIONS		LEGEND			
No.	DETAIL NUMBER	No.	Date	Description	No.	Date	Description
		08/01/02		ISSUED FOR PERMIT & TENDER			

CONTRACTOR'S CHECK AND VERIFY ALL DIMENSIONS ON THE JOB AND REPORT ANY DISCREPANCIES TO THE ARCHITECT BEFORE PROCEEDING WITH THE WORK.	
DRAWING SHOULD NOT BE SCALED	

NOTES	
CONTRACTOR'S CHECK AND VERIFY ALL DIMENSIONS ON THE JOB AND REPORT ANY DISCREPANCIES TO THE ARCHITECT BEFORE PROCEEDING WITH THE WORK.	
DRAWING SHOULD NOT BE SCALED	

<p>CONSULTANT</p> <p><b>ELLARD-WILSON ENGINEERING LTD</b></p> <p>880 TOWN CENTER BLVD., SUITE 302 MILWAUKEE, ONTARIO Tel: (905) 888-4555 Fax: (905) 888-4737</p>	<p>CONSULTANT</p> <p><b>GREY-NOBLE &amp; GREY-NOBLE ARCHITECTS</b></p> <p>1201 CORHAM STREET MILWAUKEE, ONTARIO L3G 7V2 Tel: (905) 888-4555 Fax: (905) 888-4737</p>	<p>PROJECT TITLE</p> <p><b>UXBRIDGE SECONDARY SCHOOL ADDITION AND RENOVATIONS 39 THIRD AVENUE SOUTH UXBRIDGE, ONTARIO</b></p> <p>DRAWING TITLE</p> <p><b>PLUMBING AND DRAINAGE SECOND FLOOR PLAN - WEST</b></p> <p>PROJECT NUMBER</p> <p>011113</p>	<p>DRAWING</p> <p><b>PD3</b></p> <p>01336</p>
--	---	---	---



2 SCHEMATIC DETAIL OF EQUAL FLOW PIPING TO DOMESTIC GAS-FIRED H.W.T. N.T.S.

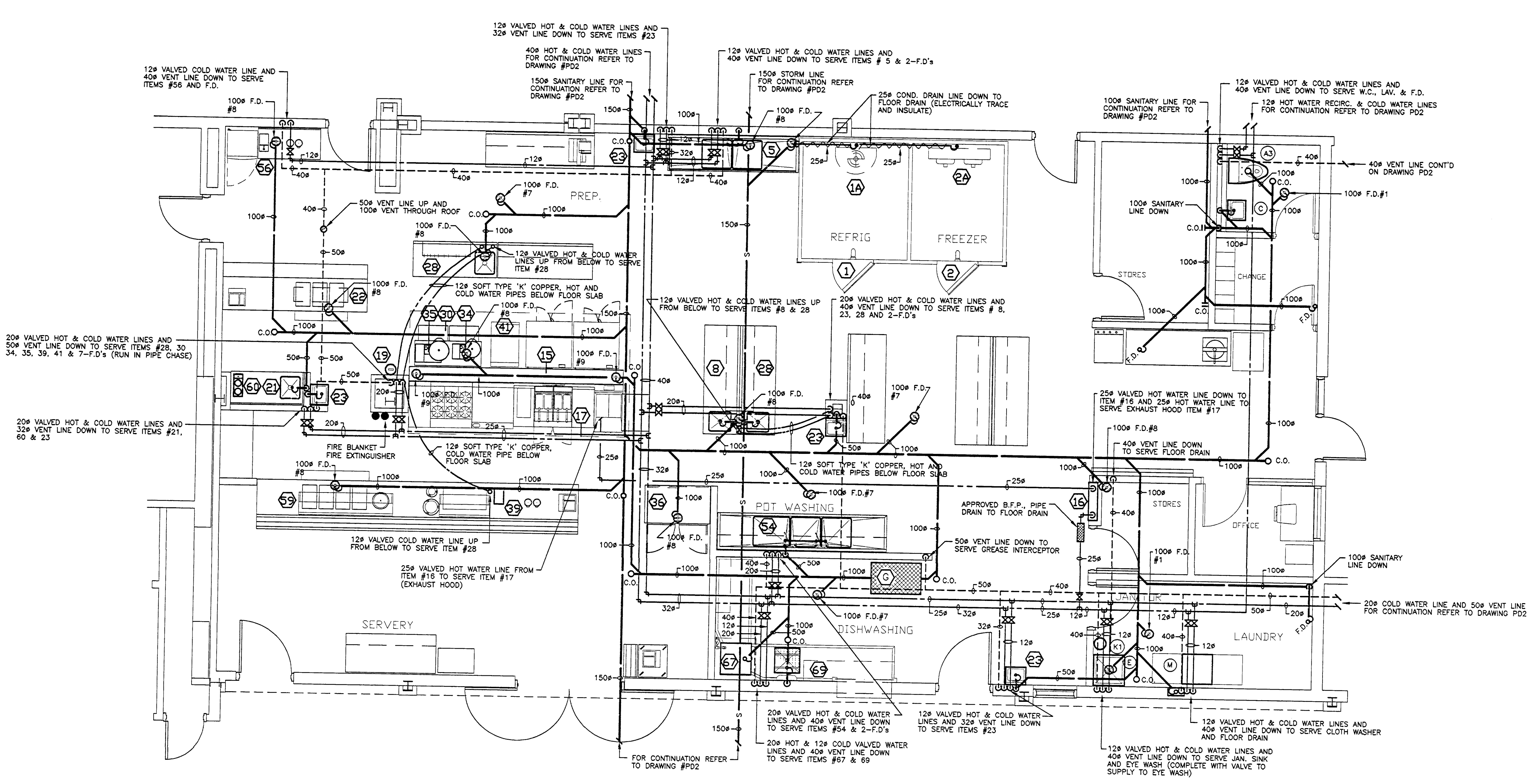
PLUMBING FIXTURE LEGEND								
FIX. REF.	FIXTURE	TEMP. WATER	HOT WATER	COLD WATER	DIR. DRAIN	INDIR. DRAIN	VENT	REMARKS
A	WATER CLOSET F.M. (F.V.)	---	---	25#	100#	---	40#	
A1	WATER CLOSET F.M. (F.V.)	---	---	25#	100#	---	40#	HANDICAPPED
A2	WATER CLOSET F.M. (F.T.)	---	---	12#	75#	---	40#	HANDICAPPED
A3	WATER CLOSET F.M. (F.T.)	---	---	12#	75#	---	40#	
B	URINAL (F.V.)	---	---	20#	50#	---	40#	
C	LAVATORY (WALL HUNG)	---	12#	12#	32#	---	32#	HANDICAPPED
C1	LAVATORY (WALL HUNG)	---	12#	12#	32#	---	32#	
D	COUNTER SINK	---	12#	12#	40#	---	32#	SINGLE COMPARTMENT
D1	COUNTER SINK	---	12#	12#	40#	---	32#	ART ROOM
D2	COUNTER SINK	---	12#	12#	40#	---	32#	SCIENCE - STUDENT
D3	COUNTER SINK	---	12#	12#	40#	---	32#	SCIENCE - TEACHER
D4	COUNTER SINK	---	12#	12#	40#	---	32#	
D5	FLAME HOOD CUP SINK	---	---	12#	40#	---	32#	
D6	COUNTER SINK	---	12#	12#	40#	---	32#	SINGLE COMPARTMENT KITCHEN
D7	COUNTER SINK	---	12#	12#	40#	---	32#	DOUBLE COMPARTMENT KITCHEN
D8	BEAUTY SINK	---	12#	12#	40#	---	32#	
E	JANITORS SINK	---	12#	12#	75#	---	40#	
F	WASHFOUNTAIN	---	25#	25#	50#	---	40#	HANDICAPPED
G	DRINKING FOUNTAIN	---	---	12#	32#	---	32#	HANDICAPPED
G1	DRINKING FOUNTAIN	---	---	12#	32#	---	32#	HANDICAPPED
H	DISHWASHER	---	12#	---	40#	---	32#	
J	SHOWER	---	12#	12#	75 F.D.	---	40#	STALL - STUDENT'S (HANDICAPPED)
J1	SHOWER	---	12#	12#	75 F.D.	---	40#	STAFF
K	EYE WASH	12#	---	---	40#	---	32#	WALL MOUNTED
K1	EYE WASH	---	---	---	12#	---	---	WALL MOUNTED - HAND HELD
K1	EYE WASH	12#	---	---	40#	---	32#	COUNTER MOUNTED
L	LAUNDRY TUB	---	12#	12#	40#	---	32#	SINGLE COMPARTMENT (MECHANICAL ROOM)
M	AUTO. CLOTH WASHER	---	12#	12#	50#	---	40#	

PLUMBING PIPING LEGEND	
SYMBOL	DESCRIPTION
---	SANITARY DRAIN LINE ABOVE FINISHED GRADE / FINISHED FLOOR
---	SANITARY DRAIN LINE BELOW FINISHED GRADE / FINISHED FLOOR
---	STORM DRAIN LINE ABOVE FINISHED GRADE / FINISHED FLOOR
---	STORM DRAIN LINE BELOW FINISHED GRADE / FINISHED FLOOR
---	CONDENSATE DRAIN LINE ABOVE FINISHED GRADE / FINISHED FLOOR
---	DOMESTIC COLD WATER LINE
---	DOMESTIC HOT WATER LINE
---	HOT WATER RECIRCULATION LINE
---	SANITARY VENT LINE
---	ELECTRICALLY TRACED LINE
---	CORROSION RESISTANT DRAIN LINE
---	CORROSION RESISTANT VENT LINE
---	EXIST. SANITARY DRAIN LINE ABOVE FIN. GRADE / FINISHED FLOOR
---	EXIST. SANITARY DRAIN LINE BELOW FIN. GRADE / FINISHED FLOOR
---	EXIST. STORM DRAIN LINE ABOVE FIN. GRADE / FINISHED FLOOR
---	EXIST. STORM DRAIN LINE BELOW FIN. GRADE / FINISHED FLOOR
---	EXIST. DOMESTIC COLD WATER LINE
---	EXIST. DOMESTIC HOT WATER LINE
---	EXIST. HOT WATER RECIRCULATION LINE
---	EXIST. SANITARY VENT LINE
---	EXISTING PIPING TO BE REMOVED

1 SECOND FLOOR PLAN - EAST SCALE 1:125

<p>KEY TO DETAIL LOCATION</p> <p>CONTRACTORS MUST CHECK AND VERIFY ALL DIMENSIONS ON THE JOB AND REPORT ANY DISCREPANCIES TO THE ARCHITECT BEFORE PROCEEDING WITH THE WORK.</p> <p>ALL PERITS AND DISPOSITIONS ARE THE PROPERTY OF THE ARCHITECT AND MUST BE RETURNED AT THE COMPLETION OF THE WORK.</p> <p>DRAWING SHOULD NOT BE SCALED</p>	<p>REVISIONS</p> <table border="1"> <thead> <tr> <th>No.</th> <th>Date</th> <th>Description</th> <th>No.</th> <th>Date</th> <th>Description</th> </tr> </thead> <tbody> <tr> <td>08/01/02</td> <td></td> <td>ISSUED FOR PERMIT &amp; TENDER</td> <td></td> <td></td> <td></td> </tr> </tbody> </table>	No.	Date	Description	No.	Date	Description	08/01/02		ISSUED FOR PERMIT & TENDER				<p>LEGEND</p>	<p>NOTES</p>	<p>CONSULTANT</p> <p><b>ELLARD-WILSON ENGINEERING LTD</b>          500 TOWN CENTRE BLVD., SUITE 202          MARKHAM, ONTARIO L3R 9B8          TEL: (905) 940-3100 FAX: (905) 940-2199</p>	<p>DESIGNED BY</p> <p><b>GREY-NOBLE &amp; GREY-NOBLE ARCHITECTS</b>          1001 GERRARD STREET EAST, 1001          NEWMARKET, ONTARIO L3Y 7V2          TEL: (905) 888-4520 FAX: (905) 888-4757</p>	<p>PROJECT TITLE</p> <p><b>UXBRIDGE SECONDARY SCHOOL ADDITION AND RENOVATIONS</b>          39 THIRD AVENUE SOUTH          UXBRIDGE, ONTARIO</p> <p>DRAWING TITLE</p> <p><b>PLUMBING AND DRAINAGE SECOND FLOOR PLAN - EAST</b></p> <p>PROJECT NUMBER</p> <p>01113</p> <p>DRAWING NUMBER</p> <p>PD4</p> <p>DATE</p> <p>JULY 2002</p>
	No.	Date	Description	No.	Date	Description												
08/01/02		ISSUED FOR PERMIT & TENDER																
<p>DATE</p> <p>JULY 2002</p>	<p>SCALE</p> <p>1:125</p> <p>DRAWN BY</p> <p>B. K.</p> <p>CHECKED BY</p> <p>M. W.</p> <p>DATE</p> <p>JULY 2002</p>	<p>PROF. ENGINEER</p> <p>N. C. DALZIEL</p> <p>PROVINCE OF ONTARIO</p>	<p>DATE</p> <p>JULY 2002</p>	<p>SCALE</p> <p>1:125</p> <p>DRAWN BY</p> <p>B. K.</p> <p>CHECKED BY</p> <p>M. W.</p> <p>DATE</p> <p>JULY 2002</p>	<p>DATE</p> <p>JULY 2002</p>													

C:\111101133-0001133-PLUMBING\01133PD4.dwg Mod: 01/31/02 15:14:2002



KITCHEN - PLUMBING FIXTURE LEGEND							
FIX. REF.	FIXTURE	HOT WATER	COLD WATER	DIR. DRAIN	INDR. DRAIN	VENT	REMARKS
1	REFRIGERATOR	-	-	-	-	-	-
1A	COOLING COIL	-	-	-	25#	-	ELECTRICALLY TRACE 25# DRAIN LINE TO F.D. (LOCATE ON SITE)
2	FREEZER	-	-	-	-	-	-
2A	COOLING COIL	-	-	-	25#	-	ELECTRICALLY TRACE 25# DRAIN LINE TO F.D. (LOCATE ON SITE)
5	VEGETABLE SINK	12#	12#	-	2-40#	32#	DRAIN TO F.D.
8	COOK'S SINK	12#	12#	-	40#	32#	DRAIN TO F.D.
15	SERVICE WALL	-	-	-	-	-	2-FLOOR DRAIN - TO GREASE INTERCEPTOR
16	EXHAUST HOOD PLUMBING BOX	25#	50#	-	-	-	HOT WATER OUTLET TO ITEM #17
17	EXHAUST HOOD	25#	-	-	50#	-	DRAIN TO F.D. (GREASE INTERCEPTOR) HOT WATER SHUT FROM ITEM #16
19	FIRE EXTINGUISHING SYSTEM	-	-	-	-	-	SUPPLIED AND INSTALLED BY KITCHEN EQUIPMENT SUPPLIER
21	BACK BAR COUNTER	12#	12#	-	40#	-	DRAIN TO F.D.
22	PICK UP COUNTER	-	-	-	3-25#	-	DRAIN TO F.D.
23	HAND BASIN	12#	12#	40#	-	32#	SUPPLIED BY KITCHEN EQUIPMENT SUPPLIER INSTALLED BY THIS SECTION
28	WORK TABLE (SINK)	12#	12#	-	40#	32#	DRAIN TO F.D.
30	KETTLE STAND	-	-	-	40#	32#	DRAIN TO GREASE INTERCEPTOR
34	KETTLE (8 GAL.)	12#	12#	-	-	-	-
35	TILT KETTLE (12 GAL.)	12#	12#	-	-	-	-
36	BEVERAGE REFRIGERATOR	-	-	-	25#	-	DRAIN TO F.D.
39	HOT CHOCOLATE MACHINE	-	12#	-	-	-	PROVIDE B.F.P. ON COLD WATER LINE
41	STEAM COOKER & STAND	12#	12#	-	40#	-	DRAIN TO F.D.
56	HOT WATER DISPENSER	-	12#	-	-	-	PROVIDE B.F.P. ON COLD WATER LINE
54	POT WASHING SINK	2-12#	2-12#	3-40#	-	40#	DRAIN TO GREASE INTERCEPTOR
59	SERVEYER COUNTER	-	-	-	5-25#	-	DRAIN TO F.D.
60	COFFEE MAKER	-	12#	-	-	-	PROVIDE B.F.P. ON COLD WATER LINE
62	SPEED LINE COUNTER	-	-	-	25#	-	DRAIN TO F.D.
67	DISHWASHER	20#	20#	-	50#	-	DRAIN TO GREASE INTERCEPTOR
69	SOILED DISH TABLE	12#	12#	-	40#	32#	DRAIN TO GREASE INTERCEPTOR
G	GREASE INTERCEPTOR	-	-	100	-	2-50	SEE SPECIFICATION

**KITCHEN PREPARATION:**

- PLUMBING AND DRAINAGE DRAWINGS ARE TO BE READ IN CONJUNCTION WITH "KITCHEN CONSULTANTS' FOOD SERVICE DRAWINGS INDICATING DIMENSIONS, ROUGH-IN AND FINAL CONNECTIONS. NO WORK SHALL BEGIN UNTIL APPROVED "KITCHEN CONSULTANTS DRAWINGS" ARE RECEIVED BY THE PLUMBING CONTRACTOR.
- PROVIDE AND INSTALL BALL VALVES ON ALL HOT AND COLD WATER SERVICE CONNECTIONS (FOR EACH ITEM).
- PLUMBING AND DRAINAGE CONTRACTOR SHALL ROUGH IN AND MAKE FINAL CONNECTIONS TO EQUIPMENT IN TWO STAGES:  
 STAGE ONE - ROUGH-IN TO 150mm (6") ABOVE FINISHED FLOOR OR 100mm (4") THROUGH WALL.  
 STAGE TWO - EXTEND SERVICES TO ALL POINTS OF FINAL CONNECTIONS AFTER EQUIPMENT IS IN PLACE (PROVIDE ALL NECESSARY FINAL CONNECTION ADAPTORS, ETC.).
- EQUIPMENT LAYOUT ON THIS DRAWING IS APPROXIMATE ONLY. SEE KITCHEN CONSULTANTS DRAWING FOR EXACT LOCATIONS.
- FINAL CONNECTIONS TO EQUIPMENT SHALL BE COMPLETE WITH ALL NECESSARY BACKFLOW PREVENTORS, VACUUM BREAKERS, ETC., AS MAY BE REQUIRED BY THE PLUMBING CODE AND LOCAL INSPECTOR.
- PIPE ALL B.F.P. DRAINS TO NEAREST FLOOR DRAIN.
- PREP. AREA LAYOUT AS SHOWN IS FOR BRACING ONLY. ALLOW FOR ADJUSTMENT TO FINAL ARRANGEMENT DRAWINGS WHEN AVAILABLE FROM KITCHEN CONSULTANTS. FOOD SERVICE NO EXTRA COST ALLOWED.

1 KITCHEN FLOOR PLAN  
 PD5 SCALE 1:50

KEY TO DETAIL LOCATION (No. in circle) DETAIL NUMBER DRAWING NUMBER CONTRACTORS MUST CHECK AND VERIFY ALL DIMENSIONS ON THE DRAWING AND NOTIFY ANY DISCREPANCIES TO THE ARCHITECT BEFORE PROCEEDING WITH THE WORK. ALL PRINTS AND SPECIFICATIONS ARE THE PROPERTY OF THE ARCHITECT AND MUST BE RETURNED AT THE COMPLETION OF THE WORK. DRAWING SHOULD NOT BE SCALED	REVISIONS <table border="1"> <thead> <tr> <th>No.</th> <th>Date</th> <th>Description</th> <th>No.</th> <th>Date</th> <th>Description</th> </tr> </thead> <tbody> <tr> <td>08/01/02</td> <td></td> <td>ISSUED FOR PERMIT &amp; TENDER</td> <td></td> <td></td> <td></td> </tr> </tbody> </table>	No.	Date	Description	No.	Date	Description	08/01/02		ISSUED FOR PERMIT & TENDER				LEGEND  NOTES	CONSULTANT <b>ELLARD-WILSON</b> <b>ENGINEERING LTD</b> 280 TOWN CENTRE BLVD. SUITE 202 MISSISSAUGA ONTARIO L4X 1L2 TEL: (905) 884-4650 FAX: (905) 884-4787	<b>GREY-NOBLE &amp; GREY-NOBLE</b> ARCHITECTS 3091 GORHAM STREET RICHMOND HILL, ONTARIO L4B 1V2 TEL: (905) 884-4650 FAX: (905) 884-4787	PROJECT TITLE <b>UXBRIDGE SECONDARY SCHOOL</b> <b>ADDITION AND RENOVATIONS</b> <b>39 THIRD AVENUE SOUTH</b> <b>UXBRIDGE, ONTARIO</b> DRAWING TITLE <b>PLUMBING AND DRAINAGE</b> <b>KITCHEN FLOOR PLAN</b> PROJECT NUMBER <b>01113</b> DRAWING <b>PD5</b> SCALE <b>1:50</b> DRAWN BY <b>B. K.</b> CHECKED BY <b>N. V.</b> DATE <b>JULY 2002</b>
	No.	Date	Description	No.	Date	Description											
08/01/02		ISSUED FOR PERMIT & TENDER															
SEAL 	SEAL 	DATE <b>JULY 2002</b>	PROJECT NUMBER <b>01113</b>	DRAWING <b>PD5</b>													

C:\M11\01335-0001\01335-PLUMBING\01335PD5.dwg, Wed Jul 31 07:36:52 2002