

# RENOVATIONS TO THE VICTORIA PARK CANTEEN

FOR THE PARKS DEPARTMENT  
740 DIVISION ST., BUILDING #7  
COBOURG, ON K9A 0H6

## DRAWING INDEX

- A001 TITLE SHEET &  
GENERAL REQUIREMENTS  
A101 PLANS & EXTERIOR ELEVATION  
A102 SECTIONS & INTERIOR ELEVATIONS  
A103 SPECIFICATIONS  
  
M1 FLOOR PLANS – MECHANICAL  
M2 SPECIFICATIONS – MECHANICAL

### ABBREVIATIONS LIST

AA	ANODIZED ALUMINUM
ADO	AUTOMATIC DOOR OPERATOR
AFF	ABOVE FINISHED FLOOR
ARA	ASSISTANCE REQUESTED ANNUNCIATOR
ARD	ASSISTANCE REQUIRED DOME LIGHT
BCS	BABY CHANGING STATION
BM	BRICK MASONRY
C	CONCRETE
CA	CLEAR ANODIZED
CB	CONCRETE BLOCK
CBS	CONCRETE BLOCK SEALER
C/C	CENTRE TO CENTRE
CH	COAT HOOK
CL	CENTRE LINE
CO	CLEAN OUT
CPT	CARPET TILE
CS	CONCRETE SEALER
CT	CERAMIC TILE
CTB	CERAMIC TILE BASE
EHD	ELECTRIC HAND DRYER
EPB	EMERGENCY PUSH BUTTON
ETR	EXISTING TO REMAIN
FD	FLOOR DRAIN
FCB	FLASH COVE BASE
FIN	FINISH
FRSG	FIRE-RATED SAFETY GLASS
FSS	FOLDING SHOWER SEAT
FTM	FIXED-TILT MIRROR
GB	GYPSUM BOARD
GC	GENERAL CONTRACTOR
GL	GRID LINE
HSD	HAND SANITIZER DISPENSER
HM	HOLLOW METAL
HR	HOUR
HVAC	HEATING VENTILATING AIR CONDITIONING
HW	HARDWOOD
HWF	HARDWOOD FLOORING
ME	MATCH EXISTING
MO	MASONRY OPENING
MR	MOISTURE RESISTANT
NIC	NOT IN CONTRACT
O	OWNER
OC	ON CENTRE
OWA	OCCUPIED WHEN-LIT ANNUNCIATOR
P	PAINT
P#	PAINT WITH # REFERRING TO SPECIFIC COLOUR
PL	PLASTIC LAMINATE
PLB	PUSH TO LOCK BUTTON
PT	PORCELAIN TILE
PTB	PORCELAIN TILE BASE
PTD	PAPER TOWEL DISPENSER
PW	PLYWOOD
Q	QUAD RECEPTACLE
RB	RESILIENT BASE
RCB	RESILIENT COVE BASE
RSD	RECESSED SOAP DISH
RSF	RESILIENT SHEET FLOORING
RSO	ROUGH STUD OPENING
RST	RESILIENT STAIR TREAD
SAP	STEEL ACCESS PANEL
SATC	SUSPENDED ACOUSTIC TILE CEILING
SCR	SHOWER CURTAIN ROD
SD	SOAP DISPENSER
SND	SANITARY NAPKIN DISPOSAL
SS	STAINLESS STEEL
SSS	STAINLESS STEEL SHELF
TBC	TO BE CONFIRMED
TG	THERMAL GLAZING
TS	TRANSITION STRIP
TSG	TEMPERED SAFETY GLASS
TTD	TOILET TISSUE DISPENSER
U/S	UNDER SIDE
UNO	UNLESS NOTED OTHERWISE
VIF	VERIFY IN FIELD
VCT	VINYL COMPOSITE TILE
VPT	VINYL PLANK TILE
WB	WOOD BASE
WBU	WATER-BASED URETHANE
WSG	WIRED SAFETY GLASS

### GENERAL REQUIREMENTS

GENERAL NOTES	
1	CONSTRUCT WORK IN COMPLIANCE WITH ONTARIO BUILDING CODE AS AMENDED & REGULATIONS & BY-LAWS OF AUTHORITIES HAVING JURISDICTION.
2	DRAWINGS ARE TO BE READ IN CONJUNCTION WITH SPECIFICATIONS & MECHANICAL DRAWINGS. ELECTRICAL WORK IS AS SHOWN ON ARCHITECTURAL DRAWINGS FOR POWER & LIGHTING REQUIREMENTS.
3	CHECK & VERIFY ALL DIMENSIONS, DRAWINGS & SPECIFICATIONS ON SITE. REPORT DISCREPANCIES TO ARCHITECT BEFORE PROCEEDING WITH WORK.
4	DO NOT SCALE DRAWINGS.
5	REPORT DISCREPANCIES BETWEEN ARCHITECTURAL & MECHANICAL DRAWINGS TO ARCHITECT BEFORE PROCEEDING WITH WORK.
6	COORDINATE WITH TOWN'S FORCES AS REQUIRED TO ENSURE CONSTRUCTION PROCEEDS EFFICIENTLY & IN A TIMELY MANNER.
7	ERECT & MAINTAIN SECURITY BARRIERS REQUIRED TO ENSURE SAFETY OF PUBLIC DURING CONSTRUCTION.
8	PROVIDE ALL ITEMS, MATERIALS, INCIDENTALS & SERVICES TO MAKE FINISHED WORK COMPLETE & FULLY OPERATIONAL, CONSISTENT WITH INTENT OF DRAWINGS, UNLESS NOTED OTHERWISE.
9	WHERE SPECIFIC PRODUCTS ARE SPECIFIED, SUPPLY & INSTALL SPECIFIED PRODUCT AS NOTED. SUBSTITUTIONS WITH PRODUCTS CONSIDERED EQUAL WILL NOT BE ACCEPTED WITHOUT ARCHITECT'S PRIOR APPROVAL.
10	APPLY ALL MATERIALS IN STRICT COMPLIANCE WITH MANUFACTURER'S INSTRUCTIONS.
11	WHERE EXECUTION OF NEW WORK AFFECTS EXISTING CONDITIONS, PATCH, REPAIR & MAKE GOOD AS REQUIRED TO MATCH EXISTING CONDITIONS.
12	INCLUDE IN SCOPE OF WORK RE-ROUTING OF EXISTING SERVICES TO AVOID INTERFERENCE WITH NEW WORK. NO CLAIMS FOR ADDITIONAL COSTS WILL BE CONSIDERED FOR RE-ROUTING EXISTING SERVICES THAT ARE VISIBLE ON SITE.
13	PROVIDE APPROPRIATE BARRIERS, SHIELDING, BLANKETS, ETC. WHEN PERFORMING CUTTING OPERATIONS TO PROTECT ADJACENT WORKERS & PUBLIC.
14	ENSURE MATERIAL STORAGE & EQUIPMENT REQUIRED TO COMPLETE WORK DOES NOT OVERFLOW BEYOND AREAS DESIGNATED FOR SAME BY TOWN.
15	LEAVE SITE/WORK AREA CLEAN AT END OF EACH WORK DAY DURING CONSTRUCTION PERIOD. REMOVE FROM SITE DEBRIS RESULTING FROM PERFORMANCE OF WORK.

### RESPONSIBILITY SCHEDULE

GENERAL CONTRACTOR (GC) IS RESPONSIBLE FOR COORDINATING WORK WITH TOWN (T) & TOWN'S FORCES AS REQUIRED TO COMPLETE PROJECT. SCOPE OF WORK INCLUDES, BUT IS NOT LIMITED TO THE FOLLOWING:	SUPPLIED BY:	INSTALLED BY:
BUILDING PERMIT APPLICATION	T	
PAYMENT OF PERMIT APPLICATION FEES	T	
GENERAL REQUIREMENTS & SITE PREPARATION	GC	GC
SELECTIVE DEMOLITION	GC	GC
POURED-IN-PLACE CONCRETE	GC	GC
REINFORCING STEEL	GC	GC
MISCELLANEOUS METALS	GC	GC
ROUGH CARPENTRY & SHEATHING PAPER	GC	GC
FINISH CARPENTRY	GC	GC
HORIZONTAL WOOD SIDING & TRIM	GC	GC
JOINT SEALANTS	GC	GC
HOLLOW METAL DOORS & FRAMES	GC	GC
FINISHING HARDWARE	GC	GC
AUTOMATIC DOOR OPERATORS	GC	GC
WASHROOM DOOR CONTROLS	GC	GC
EMERGENCY CALL SYSTEMS	GC	GC
METAL SUPPORT FRAMING FOR CEILINGS	GC	GC
GYPSUM BOARD CEILINGS	GC	GC
PORCELAIN TILE FLOORING	GC	GC
SUSPENDED T-BAR & TILE CEILING	GC	GC
PAINTING	GC	GC
PORCELAIN TILE FLOORING & BASE	GC	GC
PAINTING	GC	GC
HAND SANITIZER DISPENSER, HSD	T	GC
SOAP DISPENSER, SD	T	GC
TOILET TISSUE DISPENSER, TTD	T	GC
ALL OTHER WASHROOM ACCESSORIES	GC	GC
MECHANICAL PLUMBING & VENTILATION	GC	GC
ELECTRICAL POWER & LIGHTING	GC	GC



148 WALTON STREET, UNIT 1, PORT HOPE, ONTARIO L1A 1N6, CANADA  
TEL: (905) 885-8729 www.picciniarchitect.com

THESE DRAWINGS, DETAILS AND SPECIFICATIONS ARE A CONFIDENTIAL AND PROPRIETARY WORK PROTECTED UNDER COPYRIGHT. ALL RIGHTS ARE RESERVED. THEY ARE THE PROPERTY OF PICCINI ARCHITECT AND MAY NOT BE REPRODUCED BY ANY MEANS, ALTERED OR RE-USED WITHOUT THE EXPRESS WRITTEN PERMISSION OF PICCINI ARCHITECT.



THESE DRAWINGS, DETAILS AND SPECIFICATIONS ARE NOT TO BE USED FOR CONSTRUCTION UNTIL COUNTER SIGNED BY THE ARCHITECT.

NO.	DATE	ISSUE/REVISION FOR:	BY:
	D.M.Y.	DESCRIPTION	INIT.
1	02.12.22	CLIENT REVIEW	RP
2	30.05.25	BUILDING PERMIT & PRICING	RP

## RENOVATIONS TO THE VICTORIA PARK CANTEEN

PARKS DEPARTMENT  
740 DIVISION STREET  
BUILDING #7  
COBOURG, ON K9A 0H6

SHEET TITLE:

## TITLE SHEET & GENERAL REQUIREMENTS

DRAWN BY: RP	CHK'D BY: RP
PROJECT NO: 22.345	DATE: SEPT. 2022

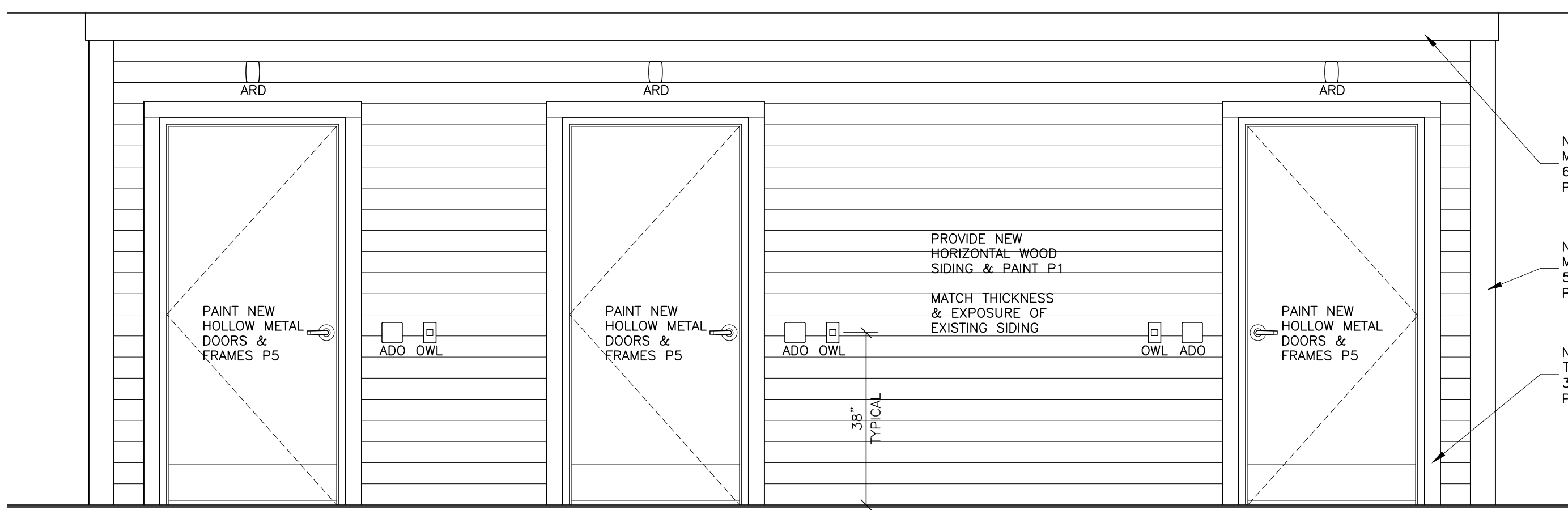
A001

**INTERIOR FINISH SCHEDULE**

P#	MATERIAL:	PAINT
	COLOUR:	SEE BELOW
	FINISH:	SEE BELOW
	MANUFACTURER:	CONTRACTOR'S CHOICE, SEE SPECIFICATION
	DISTRIBUTOR:	CONTRACTOR'S CHOICE
P1	LOCATION:	HORIZONTAL WOOD SIDING
	COLOUR:	MATCH EXISTING SIDING COLOUR, WHITE
	FINISH:	MATCH EXISTING SIDING SHEEN
P2	LOCATION:	CORNER & PERIMETER WOOD TRIM
	COLOUR:	MATCH EXISTING TRIM COLOUR, BLUE
	FINISH:	MATCH EXISTING TRIM SHEEN
P3	LOCATION:	GYPSUM BOARD CEILINGS
	COLOUR:	CEILING WHITE
	FINISH:	MATTE
P4	LOCATION:	CONCRETE BLOCK INTERIOR WALLS
	COLOUR:	MATCH EXISTING BLOCK COLOUR, CREAM
	FINISH:	MATCH EXISTING SHEEN
P5	LOCATION:	HOLLOW METAL DOORS & FRAMES
	COLOUR:	MATCH EXISTING DOOR COLOUR, BLUE
	FINISH:	MATCH EXISTING DOOR SHEEN
P6	LOCATION:	PARKS MEETING ROOM FLOOR
	COLOUR:	GRAY
	FINISH:	SATIN
PTB	MATERIAL:	PORCELAIN TILE COVE BASE
	MANUFACTURER:	OLYMPIA YORK
	DISTRIBUTOR:	SINES FLOORING, 905-372-9117
	PRODUCT:	OMNIA SERIES, UNGLAZED
	SIZE:	6"x12"x1/4" THICK
	FINISH:	CHARCOAL
PTF	MATERIAL:	PORCELAIN TILE FLOORING
	MANUFACTURER:	OLYMPIA YORK
	DISTRIBUTOR:	SINES FLOORING, 905-372-9117
	PRODUCT:	SCHOOL BOARD
	SIZE:	12" SQUARE x 1/4" THICK
	FINISH:	CHARCOAL
SATC	MATERIAL:	SUSPENDED ACOUSTIC TILE CEILING
	MANUFACTURER:	CERTANTEED
	PRODUCT:	SCHOOL BOARD
	SIZE:	24"x48"x5/8", TRIM EDGE
	COLOUR:	WHITE

**HM DOOR SCHEDULE & FINISHING HARDWARE LIST**

1010	<b>DOOR &amp; FRAME REQUIREMENTS:</b>		
	HM DOOR:	38"W x 84"H x 1 3/4"	
	HM FRAME:	5 5/8" FRAME W/4 5/8" THROAT	
		SEE ELEVATIONS FOR L/R HAND	
1020	<b>FINISHING HARDWARE REQUIREMENTS PER NEW DOOR:</b>		
	1.5 PR HINGES:	BB179 4 1/2"x4" NRP	32D
	1 STORAGE LOCK:	ALBOPD SAT	619
	1 ELECTRIC STRIKE:	CX-ED109	SS
	1 AUTO OPERATOR:	DITEC H48 41"	CA
	2 PUSH BUTTON:	4 1/2" SQUARE W/LOGO	SS
	1 EMERGENCY PUSH BUTTON KIT:	CX-WEC10K2	
	1 UNIVERSAL WR CONTROL KIT:	CX-WC11	
	1 CONTACT MAGNET:		
	1 KICKPLATE:	8"x36 1/2"	MS 630
	1 FLOOR STOP:	GSH 209	C26D
	1 THRESHOLD:	12"x42" BARRIER-FREE	CA
	1 SET WEATHERSTRIP:	W-1x17"-2"	CA
	1 DOOR SWEEP:	W-245 x 38"	CA

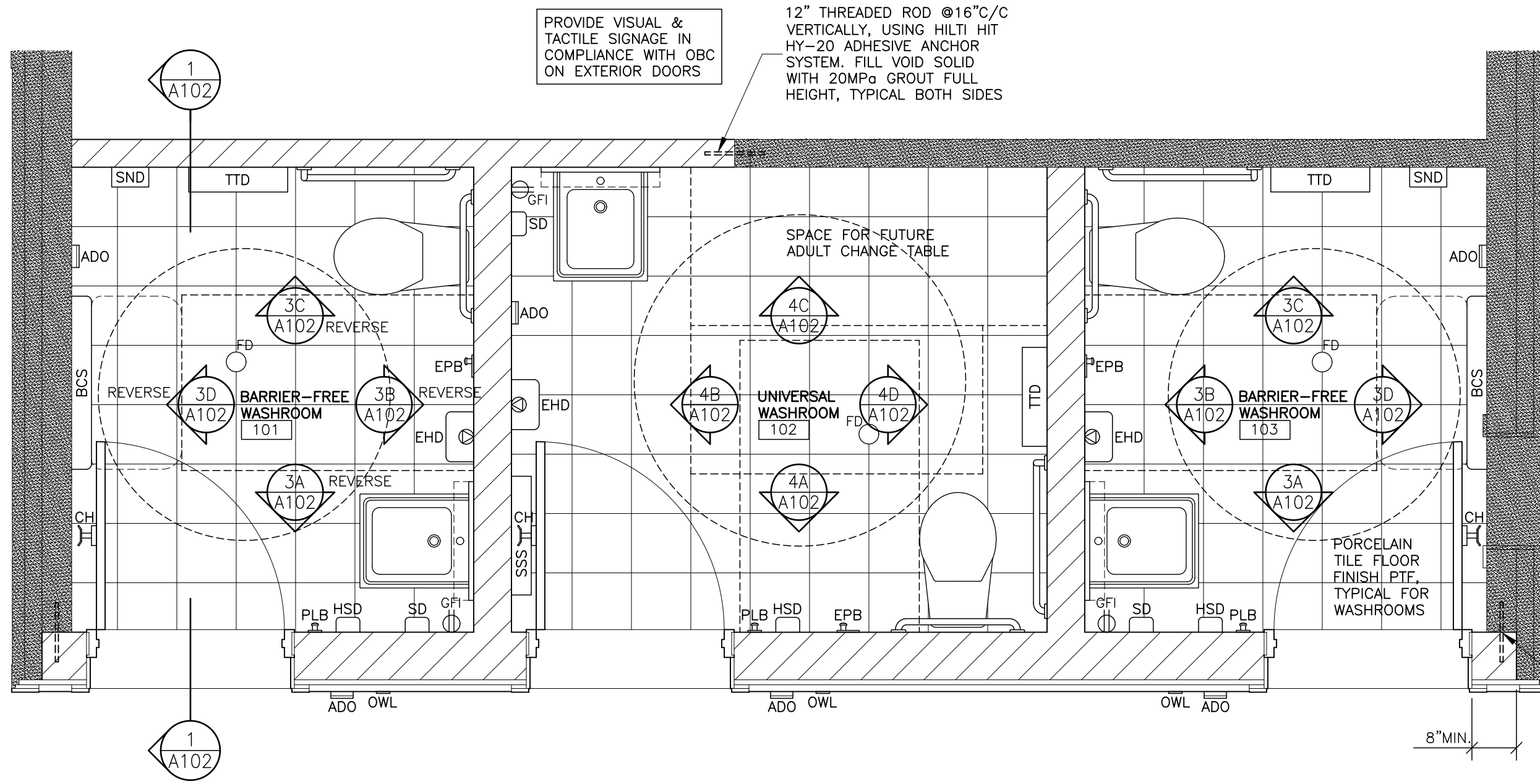


**AUTOMATIC DOOR OPERATOR & WASHRM CONTROL KIT:**  
FOR EACH WASHROOM, PROVIDE AUTOMATIC DOOR OPERATORS, WITH PUSH-TO-LOCK & OCCUPIED WHEN LIT ANNUNCIATOR KIT, AS LISTED IN FINISHING HARDWARE LIST

**EMERGENCY RESPONSE SYSTEM KIT:**  
AT EACH WASHROOM, PROVIDE EMERGENCY PUSH BUTTON, ASSISTANCE REQUESTED ANNUNCIATOR, & ASSISTANCE REQUESTED DOME LIGHT WITH AUDIBLE/VISUAL ALARM, AS LISTED IN FINISHING HARDWARE LIST

FOR BOTH SYSTEMS ABOVE, PROVIDE BACK BOXES FOR DEVICES, CONDUIT, WIRING, DOOR CONTROLLERS & TRANSFORMERS

COORDINATE EXACT LOCATION FOR ALL DEVICES WITH GENERAL CONTRACTOR & MASON PRIOR TO COMMENCING ROUGH-IN

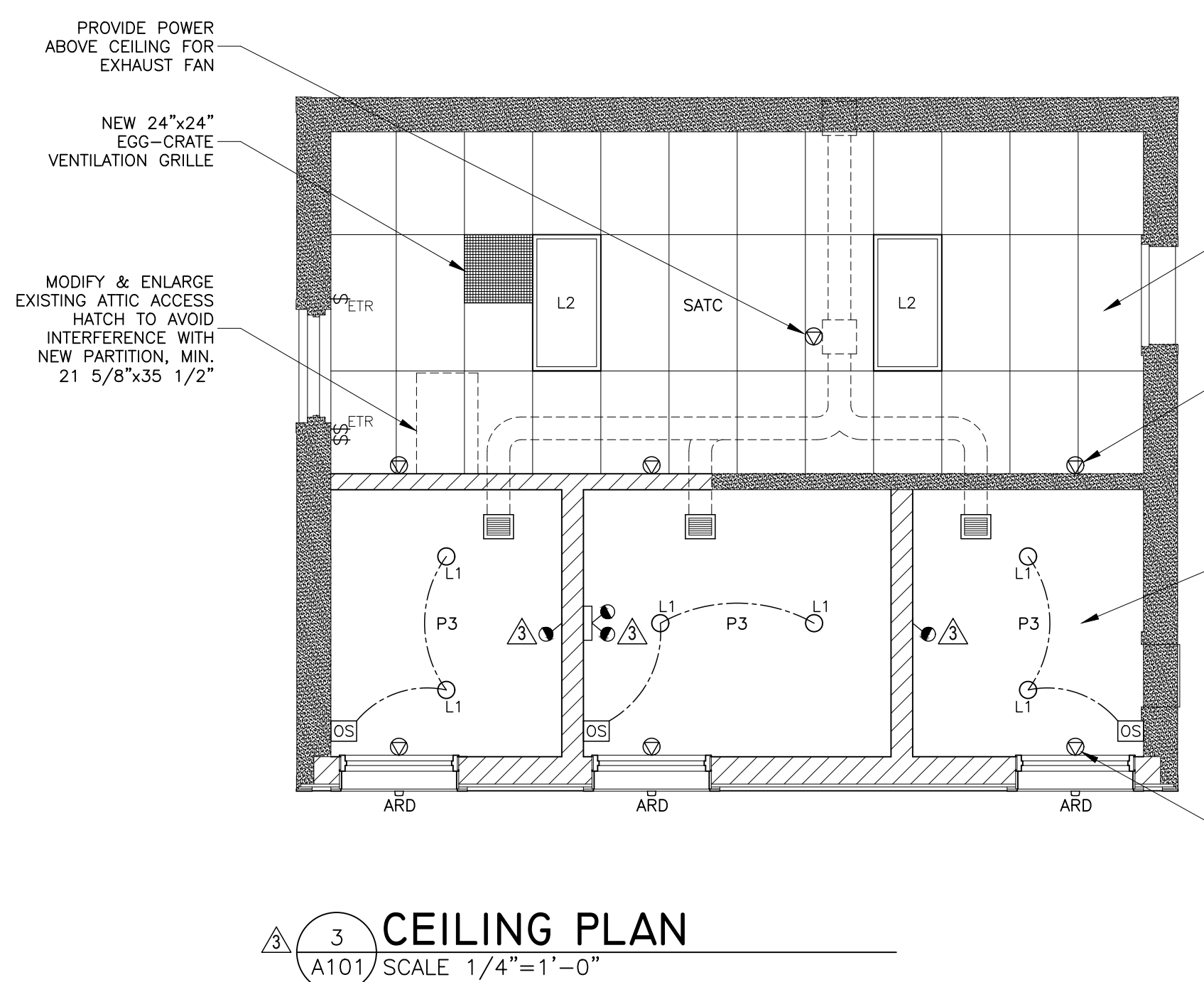


- ADO = AUTOMATIC DOOR OPERATOR
  - ARA = ASSISTANCE REQUESTED ANNUNCIATOR
  - ARD = ASSISTANCE REQUIRED DOME LIGHT
  - BCS = BABY CHANGING STATION
  - CH = COAT HOOK
  - EHD = ELECTRIC HAND DRYER
  - EPB = EMERGENCY PUSH BUTTON
  - FTM = FIXED-TILT MIRROR
  - HSD = HAND SANITIZER DISPENSER
  - OWA = OCCUPIED WHEN-LIT ANNUNCIATOR
  - PLB = PUSH TO LOCK BUTTON
  - SD = SOAP DISPENSER
  - SND = SANITARY NAPKIN DISPOSAL
  - SSS = STAINLESS STEEL SHELF
  - TTD = TOILET TISSUE DISPENSER
- SEE ELEVATIONS FOR PLAN & MOUNTING HEIGHT DIMENSIONS, TYPICAL FOR ALL WASHROOMS

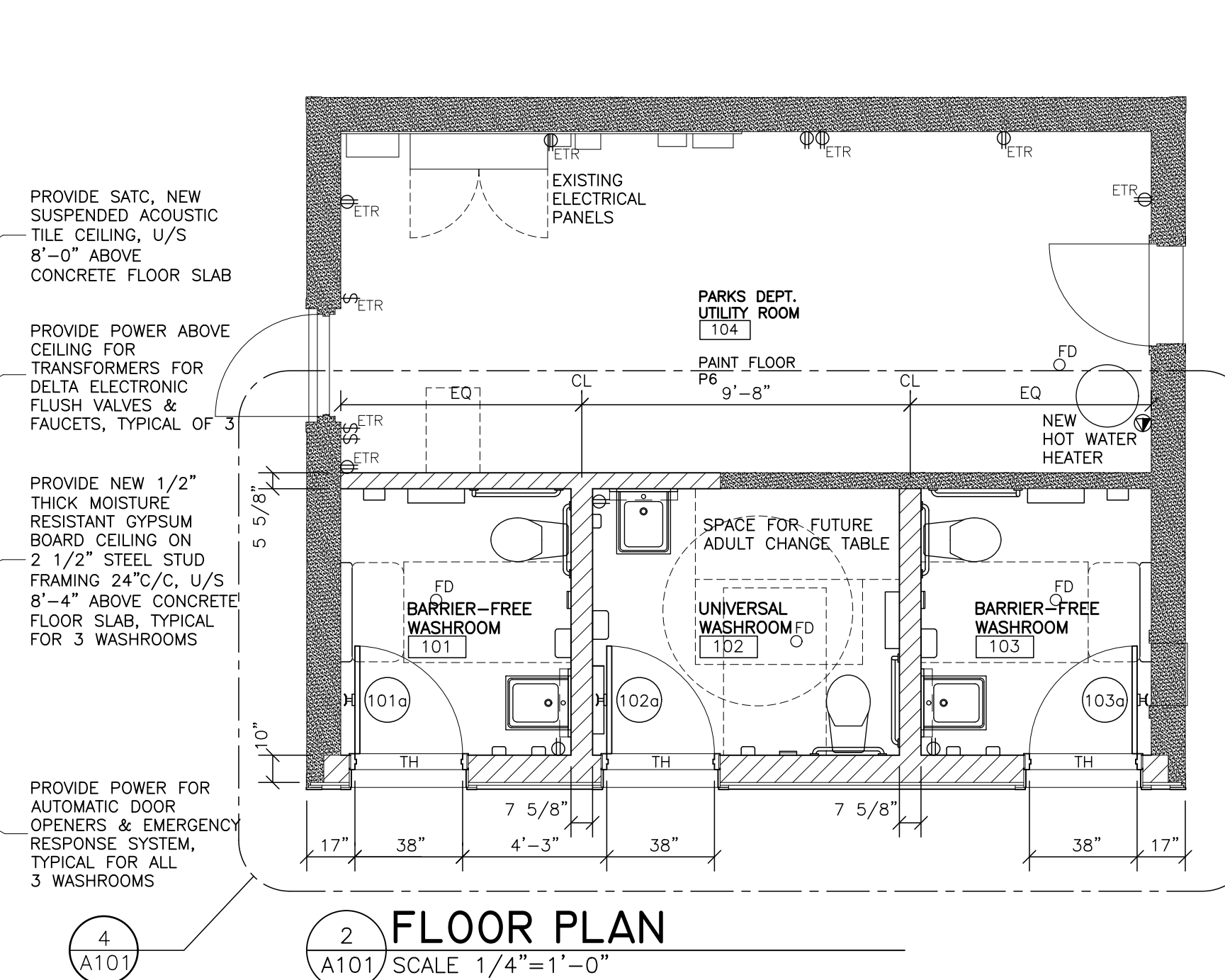
**PLAN LEGEND**

ETR	DENOTES EXISTING TO REMAIN
(Solid line)	EXISTING WALL, PARTITION, OR COLUMN TO REMAIN
(Dashed line)	WORK TO BE DEMOLISHED
(Hatched line)	NEW WALL, PARTITION, COLUMN OR CORE ELEMENT
FOR MECHANICAL SCOPE OF WORK REFER TO MECHANICAL DRAWINGS	
FD	FLOOR DRAIN, SEE MECHANICAL DRAWINGS
EG	EXHAUST FAN GRILLE, SEE MECHANICAL DRAWINGS
⊕	DUPLEX RECEPTACLE, 20A 120V 1PH, GROUND FAULT CIRCUIT INTERRUPTING, WITH STAINLESS STEEL COVER PLATE HUBBELL GF20WLA OR EQUAL
L1	LED DOWN LIGHT, 2500 LUMENS, 4000K, 80CRI, MEDIUM BEAM, 120V SIGNIFY 4RN-C4L25840M210U-C4RDCL, OR ALTERNATE BY LITHONIA, PEERLESS-ELECTRIC, VISIONEERING, PIONEER LIGHTING, CREE LIGHTING, COOPER LIGHTING
⊞	LIGHT SWITCH, 120V HUBBELL 1200 SERIES, OR ALTERNATE BY LEVITON, LEGRAND, COOPER
OS	OCCUPANCY SENSOR, 24V, CEILING/CORNER MOUNTED DUAL TECHNOLOGY, WHITE LEVITON OSW12-MOW, OR ALTERNATE BY HUBBELL, LEGRAND, ACUITY CONTROLS
L2	RECESSED FLAT PANEL 2x4 LED LUMINAIRE, DIFFUSE LENS, 3800 LUMENS, 4000K, 120V SIGNIFY 2FXP38L840-4-DS-UNV, OR ALTERNATE BY LITHONIA, PEERLESS-ELECTRIC, VISIONEERING, PIONEER LIGHTING, CREE LIGHTING, COOPER LIGHTING
EHD	ELECTRIC HAND DRYER, EXTREME AIR BY PRO-DRYERS, MODEL EXT-SS (STAINLESS STEEL COVER) UNIVERSAL VOLTAGE 100-240V 20AMP
⊕	208V 1PH GROUNDED DIRECT EQUIPMENT CONNECTION
⊕	120V 1PH GROUNDED DIRECT EQUIPMENT CONNECTION
⚡	EMERGENCY LIGHT FIXTURE, PROVIDE ILLUMINATION LEVEL OF MIN. 10 lx AT FLOOR LEVEL, WITH MIN. 30 MINUTE BATTERY POWERED BACK-UP POWER SUPPLY, DOUBLE HEAD & SINGLE HEAD SHOWN

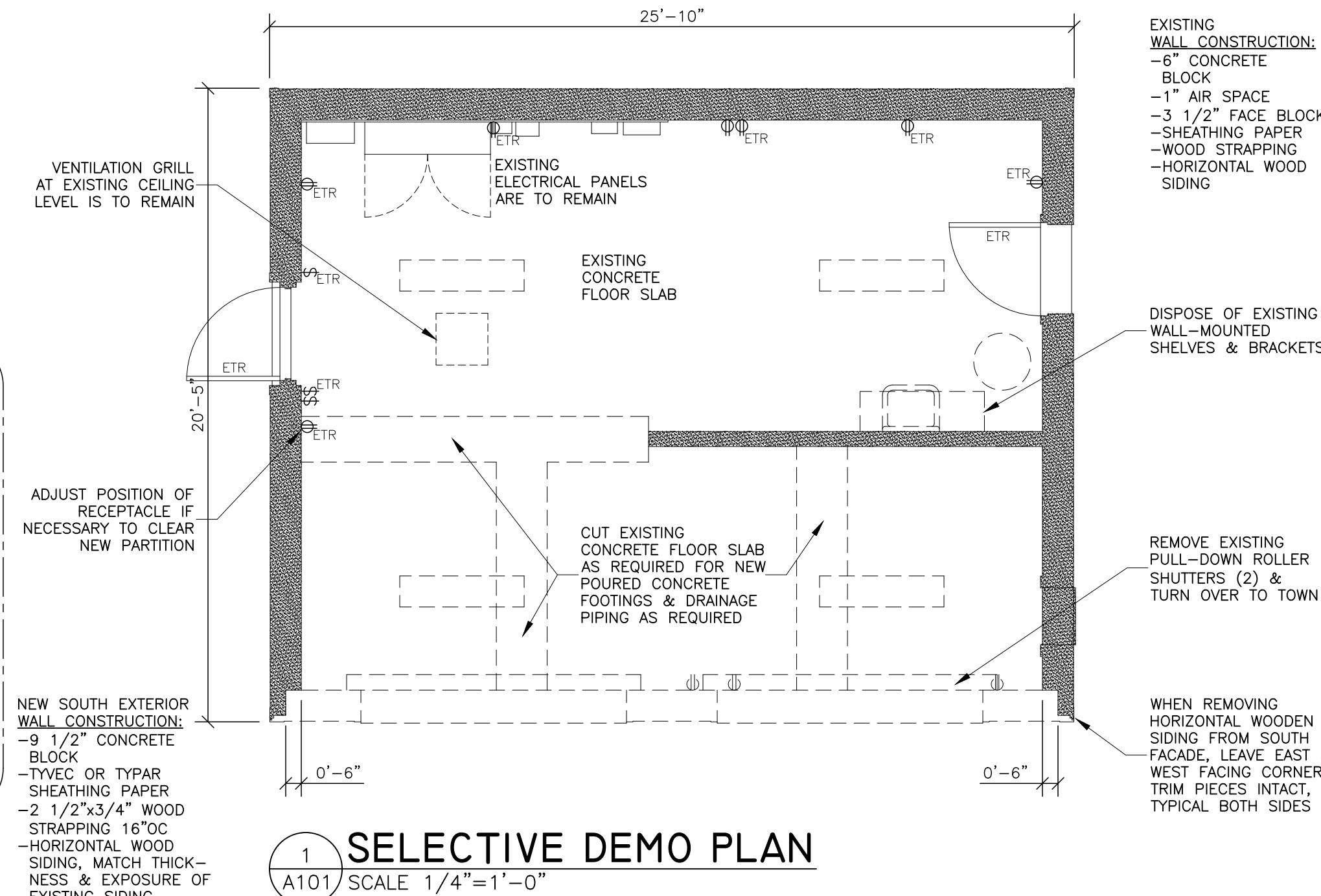
**4 DETAIL PLAN & EXTERIOR ELEVATION**  
A101 SCALE 1/2"=1'-0"



**3 CEILING PLAN**  
A101 SCALE 1/4"=1'-0"



**2 FLOOR PLAN**  
A101 SCALE 1/4"=1'-0"



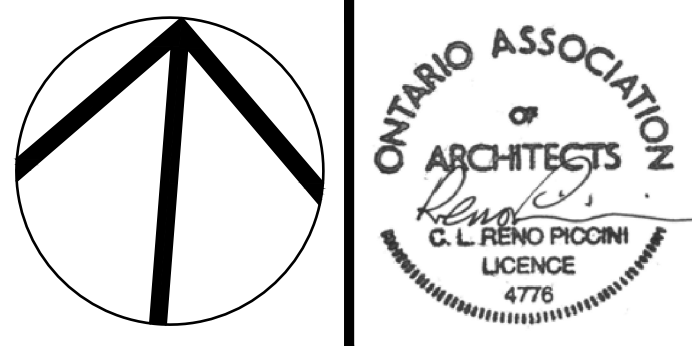
**1 SELECTIVE DEMO PLAN**  
A101 SCALE 1/4"=1'-0"

**PLANS**  
A101 SCALE 1/4"=1'-0"

**PICCINI ARCHITECT**

148 WALTON STREET, UNIT 1, PORT HOPE, ONTARIO L1A 1N6, CANADA  
TEL: (905) 885-8729 www.picciniarchitect.com

THESE DRAWINGS, DETAILS AND SPECIFICATIONS ARE A CONFIDENTIAL AND PROPRIETARY WORK PROTECTED UNDER COPYRIGHT. ALL RIGHTS ARE RESERVED. THEY ARE THE PROPERTY OF PICCINI ARCHITECT AND MAY NOT BE REPRODUCED BY ANY MEANS, ALTERED OR RE-USED WITHOUT THE EXPRESS WRITTEN PERMISSION OF PICCINI ARCHITECT.



THESE DRAWINGS, DETAILS AND SPECIFICATIONS ARE NOT TO BE USED FOR CONSTRUCTION UNTIL COUNTER SIGNED BY THE ARCHITECT.

NO.	DATE	ISSUE/REVISION FOR:	BY:
1	02.12.22	CLIENT REVIEW	RP
2	30.05.25	BUILDING PERMIT & PRICING	RP
3	09.07.25	EMERGENCY LIGHTING ADDED	RP

**RENOVATIONS TO THE VICTORIA PARK CANTEEN**

PARKS DEPARTMENT  
740 DIVISION STREET  
BUILDING #7  
COBOURG, ON K9A 0H6

**PLANS & EXTERIOR ELEVATION**

DRAWN BY: RP	CHK'D BY: RP
PROJECT NO: 22.345	DATE: SEPT. 2022

**A101**



**GENERAL SPECIFICATIONS**

<p><b>SELECTIVE DEMOLITION</b></p> <p>1 PROTECT AREA SURROUNDING SELECTIVE DEMOLITION FROM DAMAGE FROM FALLING DEBRIS &amp; OTHER CAUSES. PERFORM WORK IN ACCORDANCE WITH CSA S350-M, CODE OF PRACTICE FOR SAFETY IN DEMOLITION OF STRUCTURES.</p> <p>2 BRACE LOAD-BEARING ELEMENTS TO ENSURE WORK AT NO TIME IS IN DANGER OF COLLAPSING OR ENDANGERING SAFETY OF WORKERS OR PUBLIC.</p> <p>3 REMOVE CAREFULLY THE FOLLOWING ITEMS &amp; TURN OVER TO OWNER: -ROLLING SHUTTERS (2)</p> <p>4 DEMOLISH EXISTING EXTERIOR WALL NOTED ON DRAWINGS, SHOWN IN BROKEN LINES OR IDENTIFIED WITH NOTATIONS ON DRAWINGS.</p> <p>5 DEMOLISH WALLS IN SMALL PORTIONS, CUT MASONRY STRAIGHT WITH POWER DRIVEN ABRASIVE CUTTING DISC. WET DOWN AREA WHERE POSSIBLE TO KEEP DUST EMISSION TO MINIMUM. PREVENT DUST FROM MIGRATING BEYOND WORK AREA BY ERECTING APPROPRIATE DUST SCREENS AS REQUIRED.</p> <p>6 LEAVE EXISTING CONCRETE FLOOR SLAB CLEAN &amp; FREE OF ADHESIVES, GROUT, GREASE, ETC., READY FOR APPLICATION OF NEW FLOOR FINISHES.</p> <p>7 REPAIR &amp; MAKE GOOD DAMAGE TO EXISTING FINISHES &amp; SUBSTRATES CAUSED DURING PERFORMANCE OF SELECTIVE DEMOLITION WORK.</p> <p>8 REMOVE &amp; DISPOSE OF DEMOLITION DEBRIS, UNLESS NOTED OTHERWISE.</p>	<p><b>MASONRY</b></p> <p>1 PROVIDE MASONRY UNITS AS SHOWN ON DRAWINGS WITH UNITS COMPLYING WITH MASONRY UNIT STANDARDS LISTED IN ONTARIO BUILDING CODE.</p> <p>2 CONCRETE BLOCK IS TO BE MODULAR CONCRETE MASONRY UNITS COMPLYING WITH CAN/CSA-A165.1, "CONCRETE MASONRY UNITS" &amp; AS FOLLOWS: -5/15/4/M 75% SOLID FOR BLOCK WALLS EXPOSED TO EXTERIOR &amp; FOR LOAD-BEARING WALLS.</p> <p>3 MORTAR IS TO COMPLY WITH CSA A179 FOR MORTAR MATERIALS. ENSURE MIXES CONFORM TO ONTARIO BUILDING CODE &amp; AS FOLLOWS: -FOR BEDDING LINTELS, USE TYPE 'M' CEMENT MORTAR HAVING COMPRESSIVE STRENGTH OF 17.5 MPa OR 2,500 PSI. -FOR LOAD-BEARING &amp; NON LOAD-BEARING MASONRY UNITS, USE TYPE 'S' CEMENT MORTAR HAVING COMPRESSIVE STRENGTH OF 12.5 MPa OR 1800 PSI.</p> <p>4 PROVIDE REINFORCED MASONRY BLOCK LINTELS AS SHOWN ON DRAWINGS. SEE WALL SECTION DETAIL. EXTEND LINTEL BLOCKS FOR MIN. 200mm OR 8" BEARING AT EACH END.</p> <p>5 LAY BLOCK UNITS WITH MORTAR JOINTS OF 10mm OR 3/8" THICKNESS.</p> <p>6 WHERE LOAD BEARING MASONRY WALLS SUPPORT ROOF FRAMING MEMBERS, FILL TOP 2 COURSES SOLID WITH CONCRETE.</p> <p>7 WHEN LAYING, KEEP MASONRY AT NOT LESS THAN 4 DEG. C. OR MORE THAN 48 DEG. C. WHEN AIR TEMPERATURE IS BELOW 4 DEG. C.</p> <p>8 MAINTAIN MASONRY AT TEMPERATURE OF 4 DEG. C. MIN. FOR 72 HOURS AFTER LAYING.</p>	<p><b>HOLLOW METAL DOORS &amp; FRAMES</b></p> <p>1 PROVIDE COMMERCIAL GRADE HOLLOW METAL DOORS &amp; FRAMES AS SHOWN ON DRAWINGS, FRAMES IN CONFORMANCE WITH ASTM A568-M, CLASS 1 &amp; HOT DIP GALVANIZED TO ASTM A527-M. DESIGN &amp; CODE REQUIREMENTS ARE TO BE IN CONFORMANCE WITH CANADIAN MANUFACTURING SPECIFICATION FOR STEEL DOOR &amp; FRAME MANUFACTURER'S ASSOCIATION.</p> <p>2 SUPPLY DOORS BY FLEMING DOOR PRODUCTS, OR ALTERNATE APPROVED BY ARCHITECT PRIOR TO PROCURING.</p> <p>3 EXTERIOR DOORS ARE TO BE VERTICALLY STIFFENED, &amp; CORE FILLED WITH RIGID POLYSTYRENE OR RIGID MINERAL WOOL INSULATION.</p> <p>4 COORDINATE HOLLOW METAL DOOR &amp; FRAME PREPARATION WITH FINISH HARDWARE REQUIREMENTS. REFER TO TEMPLATES PROVIDED BY HARDWARE SUPPLIER.</p> <p>5 INSTALL HOLLOW METAL FRAMES PLUMB, SQUARE &amp; LEVEL WITH 3 STANDARD ANCHORS AT EACH JAMB, USE ANCHORS DESIGNED FOR SPECIFIC WALL CONSTRUCTION TYPE. AT MASONRY WALLS, GROUT FRAMES SOLID &amp; RAKE JOINTS.</p> <p>6 FIT DOORS ACCURATELY WITH MAX. 3mm OR 1/8" JAMB &amp; HEAD CLEARANCE, &amp; 10mm OR 3/8" CLEARANCE AT SILLS OR FLOOR.</p>	<p><b>FINISHES</b></p> <p>1 APPLY FINISHES IN STRICT COMPLIANCE WITH FINISH MANUFACTURER'S INSTRUCTIONS. REVIEW CONDITION OF ALL SUBSTRATES BEFORE COMMENCING WORK. NOTIFY ARCHITECT IF SUBSTRATES ARE NOT IN ACCEPTABLE CONDITION.</p> <p><b>METAL SUPPORT SYSTEMS</b></p> <p>1 PROVIDE METAL CEILING SUSPENSION SYSTEMS IN CONFORMANCE WITH APPLICABLE REQUIREMENTS OF CSA A82.30-M &amp; CSA-A82.31-M.</p> <p>2 PLACE FRAMING AT CENTRES NOTED ON DRAWINGS.</p> <p>3 ERECT HANGERS &amp; RUNNER CHANNELS FOR SUSPENDED GYPSUM BOARD CEILINGS IN ACCORDANCE WITH CSA A82.31. SPACE CHANNELS MAX. 1.2m OR 48" C/C &amp; MAX. OF 150mm OR 6" FROM WALLS. INSTALL TRANSVERSE CHANNELS MAX. 610mm OR 24" C/C.</p> <p><b>GYPSUM BOARD</b></p> <p>1 INSTALL GYPSUM BOARD IN ACCORDANCE WITH CAN/CSA-82.31M, TYPE CONFORMING TO CSA A82.27 FOR NON FIRE-RATED PARTITIONS &amp; MOISTURE RESISTANT BOARD, 1219mm OR 48" WIDE BY MAX. LENGTH, THICKNESS AS NOTED ON DRAWINGS.</p> <p>2 APPLY BOARD OVER METAL FRAMING AFTER APPROVAL OF MECHANICAL &amp; ELECTRICAL ROUGH-IN WORK. PROVIDE METAL FURRING, RESILIENT CHANNELS, HANGERS, TIE WIRES, INSERTS &amp; ANCHORS IN CONFORMANCE WITH CSA A82.30.</p> <p>3 FIT BOARD NEATLY AT CEILING PERIMETERS WHERE BOARD ABUTS BLOCK. FINISH EDGES WITH 'L' TYPE CASING BEADS MADE FROM COMMERCIAL GRADE SHEET STEEL WITH G90 ZINC FINISH CONFORMING TO ASTM A525-80A &amp; WITH PERFORATED FLANGES. INSTALL IN 1-PIECE LENGTHS PER LOCATION.</p> <p>4 SECURE BEADS &amp; BOARD WITH NO. 6 GAUGE TYPE S BULE-HEAD SELF-DRILLING SELF-TAPPING SCREWS, LENGTH TO SUIT BOARD THICKNESS WITH MIN. 10mm OR 3/8" PENETRATION INTO METAL FRAMING.</p> <p>5 FOLLOWING BOARD INSTALLATION, PRE-FILL ALL JOINTS WITH DURABOND 90. APPLY TAPE &amp; JOINT COMPOUND AT ALL PANEL JOINTS. DO NOT TAPE PERIMETER CORNERS WHERE BOARD ABUTS BLOCK.</p> <p>6 FINISH WORK SMOOTH, PLUMB, FLUSH &amp; FEATHERED OUT, READY FOR PRIME PAINTING.</p>	<p><b>PAINTING</b></p> <p>1 PROVIDE PAINT CONFORMING TO CGSB SPECIFICATIONS, 1-GP SERIES. USE MANUFACTURER'S FIRST GRADE EXTERIOR LINE.</p> <p>2 PROTECT ALL MATERIALS, SURFACES, &amp; ITEMS NOT LISTED TO RECEIVE PAINT FINISH, SUCH AS LIGHT FIXTURES, GRILLES, ETC., PRIOR TO COMMENCING PAINTING.</p> <p>3 PAINTING &amp; FINISHING SYSTEMS: <b>PREVIOUSLY PAINTED CONCRETE BLOCK WALLS:</b> 2 COATS LATEX EGGSHELL FINISH. <b>UNPAINTED CONCRETE BLOCK WALLS:</b> 1 COAT LATEX BLOCK FILLER. 2 COATS LATEX EGGSHELL FINISH. <b>UNPAINTED GYPSUM BOARD CEILINGS:</b> 1 COAT LATEX PRIMER. 2 COATS LATEX FLAT FINISH. <b>PREVIOUSLY PAINTED METAL DOORS &amp; FRAMES:</b> 2 COATS LATEX SATIN FINISH. <b>UNPAINTED METAL DOORS &amp; FRAMES:</b> 1 COAT LATEX PRIMER. 2 COATS LATEX EGGSHELL FINISH. <b>PAINTED &amp; UNPAINTED CONCRETE FLOORS:</b> 2 COATS ACRYLIC ENAMEL.</p> <p>4 SET NAILS &amp; FASTENERS BELOW SURFACES TO BE PAINTED. FILL WITH PATCHING COMPOUND &amp; SAND SMOOTH.</p> <p>5 CLEAN &amp; LIGHTLY SAND PREVIOUSLY PAINTED SURFACES TO BE RE-PAINTED TO REMOVE DIRT &amp; DEBRIS IMPREGNATED INTO PAINTED SURFACE.</p> <p>6 ENSURE ALL SURFACES TO BE PAINTED ARE DRY &amp; FREE OF DUST &amp; MATTER LIABLE TO INTERFERE WITH ADHESION OF PAINT, OR CAUSE BLEEDING OR STAINING IN FINISHED SURFACE.</p> <p>7 APPLY PAINT FINISHES IN ACCORDANCE WITH PAINT MANUFACTURER'S SPECIFICATIONS, PARTICULARLY WITH RESPECT TO MIN. &amp; MAX. TEMPERATURE IN WHICH PAINT CAN BE APPLIED.</p> <p>8 PROTECT PAINTED SURFACES FROM CONTACT WITH WORKERS &amp; PEDESTRIANS WITH SIGNAGE "WARNING, WET PAINT" UNTIL PAINT HAS DRIED.</p>	<p><b>MECHANICAL</b></p> <p>1 REFER TO MECHANICAL DRAWINGS FOR MECHANICAL WORK &amp; SPECIFICATION NOTES.</p>
<p><b>MECHANICAL</b></p> <p>9 REFER TO MECHANICAL DRAWINGS FOR SELECTIVE DEMOLITION SCOPE OF WORK.</p>	<p><b>ROUGH CARPENTRY</b></p> <p>1 CONFORM TO CSA 086.1 "ENGINEERING DESIGN IN WOOD", PLYWOOD HANDBOOK (BY CANADIAN PLYWOOD ASSOCIATION), ONTARIO BUILDING CODE &amp; GOOD CONSTRUCTION PRACTICE FOR DESIGN &amp; INSTALLATION OF ALL WOOD FRAMING.</p> <p>2 USE NO. 2 GRADE SPRUCE, PINE, FIR OR BETTER, KILN DRIED TO MAXIMUM 19% MOISTURE CONTENT FOR ALL WOOD-FRAME MEMBERS.</p> <p>3 PLYWOOD IS TO CONFORM TO CSA 0121 "DOUGLAS FIR PLYWOOD" &amp;/OR CSA 0151 "CANADIAN SOFTWOOD PLYWOOD" AS APPLICABLE.</p> <p>4 PROVIDE SILL GASKET AT U/S OF SILL PLATES BEARING ON MASONRY WALLS, LIGHT-WEIGHT MULTI CELLULAR CLOSED CLOSED CELL POLYETHYLENE FOAM, 6mm OR 1/4" THICK.</p> <p>5 USE NAILS CONFORMING TO CSA B111, "WIRE NAILS, SPIKES &amp; STAPLES" &amp; SCREWS CONFORMING TO ANSI B18.6.1. ROBERTSON FRAMING SCREWS ARE ACCEPTABLE.</p> <p>6 ERECT WORK PLUMB, LEVEL, SQUARE &amp; TO REQUIRED LINES. FRAME MATERIALS WITH TIGHT JOINTS RIGIDLY HELD IN PLACE.</p> <p>7 NAIL FRAMING IN CONFORMANCE WITH ONTARIO BUILDING CODE FOR LENGTH &amp; MIN. NUMBER OF NAILS, &amp; FOR MAX. SPACING OF NAILS.</p> <p>8 PROVIDE ALL REQUIRED BLOCKING, GROUNDS, FURRING &amp; STRAPPING, WHETHER SHOWN ON DRAWINGS OR NOT, FOR SATISFACTORY INSTALLATION OF EXTERIOR &amp; INTERIOR FINISHES, FIXTURES &amp; EQUIPMENT.</p> <p>9 DO NOT DRILL OR NOTCH TOP PLATES TO LESS THAN 50mm OR 2" IN WIDTH.</p> <p>10 HOLES DRILLED IN ROOF &amp; CEILING FRAMING CAN BE NO LARGER THAN 1/4 DEPTH OF MEMBER, &amp; 50mm OR 2" MIN. FROM EDGES.</p> <p>11 NOTCHES CUT IN ROOF &amp; CEILING FRAMING MUST BE LOCATED ON TOP OF MEMBER &amp; WITHIN HALF OF MEMBER DEPTH FROM EDGE OF BEARING &amp; NOT DEEPER THAN 1/3 DEPTH OF MEMBER.</p>	<p><b>FINISHING HARDWARE</b></p> <p>1 SUPPLY &amp; INSTALL FINISHING HARDWARE FOR NEW DOORS SHOWN ON FLOOR PLAN &amp; IDENTIFIED IN HOLLOW METAL DOOR SCHEDULE. ACCEPTABLE MANUFACTURER'S OF HARDWARE INCLUDE HAGER, K. N. CROWDER, BEASAM CANADA &amp; CAMDEN.</p> <p>2 PREPARE &amp; SUBMIT FINISHING HARDWARE SCHEDULE FOR REVIEW &amp; APPROVAL BY ARCHITECT PRIOR TO PROCURING MATERIAL. HARDWARE PRODUCTS ARE TO MEET REQUIREMENTS OF CAN/CGSB-69.17 TO 69.36-M.</p> <p>3 SCHEDULE IS TO INCLUDE MANUFACTURER'S NAME, LEGEND OF LETTER SYMBOLS USED, DIMENSIONED DIAGRAM SHOWING HARDWARE LOCATION ON DOOR, &amp; LIST OF HARDWARE FOR EACH SET REQUIRED. CROSS REFERENCE LIST TO DOOR NUMBERS ON DRAWINGS.</p> <p>4 PROVIDE MANUFACTURER'S INSTRUCTIONS &amp; TEMPLATES FOR PROPER PREPARATION &amp; APPLICATION OF HARDWARE.</p> <p>5 INSTALL HARDWARE AS PER MANUFACTURER'S INSTRUCTIONS, USING FULL COMPLIMENT OF SCREWS. DRAW COMPONENTS UP TIGHT &amp; PROVIDE ADJUSTMENTS WHERE NECESSARY TO LEAVE HARDWARE IN PERFECT WORKING ORDER.</p>	<p><b>PORCELAIN TILE</b></p> <p>1 PROVIDE SET-IN-PLACE PORCELAIN TILE FLOORING &amp; WALL BASE AS SPECIFIED &amp; AS SHOWN ON DRAWINGS.</p> <p>2 SUBMIT SAMPLE OF SPECIFIED FLOOR TILE, BASE TILE &amp; GROUT COLOUR TO ARCHITECT &amp; OWNER FOR APPROVAL PRIOR TO PROCURING MATERIALS &amp; COMMENCING WORK.</p> <p>3 REVIEW CONDITION OF EXISTING &amp; NEW SUBSTRATES TO RECEIVE PORCELAIN TILE. REPORT UNSATISFACTORY CONDITIONS TO ARCHITECT PRIOR TO COMMENCING WORK.</p> <p>4 PREPARE FLOOR SUBSTRATE IN ACCORDANCE WITH TILE MANUFACTURER'S INSTRUCTIONS.</p> <p>5 APPLY MATERIALS &amp; FINISHES USING METHODS SPECIFIED &amp; ILLUSTRATED IN TERRAZZO, TILE &amp; MARBLE ASSOC. MANUAL, &amp; APPLICABLE MANUFACTURER'S INSTRUCTIONS.</p> <p>6 MAINTAIN AIR &amp; SUBSTRATE TEMPERATURE ABOVE 10 DEG. C. FROM 24 HOURS BEFORE, DURING &amp; AFTER INSTALL.</p> <p>7 IF SUBSTRATE REQUIRES LEVELING COAT, USE ULTRA/PLAN BY MAPEI CANADA FOR VARIATIONS UP TO 1/2". FOR GREATER VARIATIONS, USE PLANICRETE 50 BY MAPEI MIXED WITH PORTLAND CEMENT &amp; SAND.</p> <p>8 INSTALL ALL TILE USING THIN-SET MORTAR SYSTEM MEETING ANSI A118.4, ULTRA/FLEX II BY MAPEI. BEGIN TILE PATTERN AS INDICATED ON PLANS. APPLY SETTING COMPOUND TO SUBSTRATE TO RECEIVE TILE USING NOTCHED TROWEL WITH NOTCH DEPTH AS SPECIFIED BY TILE MANUFACTURER.</p> <p>9 SMOOTH EDGES OF CUT TILES WITH CARBORUNDUM BLOCK OR OTHER MEANS TO ACHIEVE CLEAN STRAIGHT EDGES.</p> <p>10 LAY TILES WITH 1/4" WIDE JOINT BETWEEN TILES. POINT JOINTS WITH DRY CURE GROUT SYSTEM, ULTRA/COLOUR BY MAPEI CANADA. RE-POINT JOINTS AFTER CLEANING TO ELIMINATE IMPERFECTIONS.</p> <p>11 FINISHED WORK IS TO BE CLEAN &amp; FREE OF TILES WHICH ARE PITTED, CHIPPED, CRACKED OR SCRATCHED.</p> <p>12 AFTER TILE HAS BEEN POLISHED, CLEAN WITH DRY CLOTH &amp; COVER ENTIRE TILED SURFACE WITH POLYETHYLENE &amp; ALLOW TO CURE FOR 72 HOURS.</p>	<p><b>SUSPENDED ACOUSTICAL TILE CEILINGS</b></p> <p>1 PROVIDE ACOUSTICAL TILE CEILING IN PROFILE, COLOUR, SIZE &amp; TEXTURE SPECIFIED ON INTERIOR FINISH SCHEDULE.</p> <p>2 CEILING TILES ARE TO CONFORM TO CAN/CGSB-92.1-M &amp; CAN4-S102-M FOR SURFACE BURNING CHARACTERISTICS. METAL SUSPENSION GRID SYSTEM IS TO CONFORM TO ASTM C635.</p> <p>3 SUBMIT SAMPLE OF TILE &amp; GRID SYSTEM FOR APPROVAL BY ARCHITECT OR OWNER PRIOR TO PROCURING MATERIALS.</p> <p>4 INSTALL METAL SUSPENSION SYSTEM &amp; CEILING TILES IN ACCORDANCE WITH ASTM C636, HANGERS MIN. 1.2m OR 48" C/C &amp; WITHIN 150mm OR 6" FROM ENDS OF MAIN TIES. ENSURE SUPPORTING INSERTS ARE ANCHORED INTO FRAMING ABOVE EXISTING GYPSUM BOARD CEILING.</p> <p>5 SUPPORT LIGHT FIXTURES WITH ADDITIONAL HANGERS &amp; LOCATE WITHIN 150mm OR 6" OF FIXTURE CORNERS.</p> <p>6 COORDINATE WORK WITH MECHANICAL &amp; ELECTRICAL SUB-TRADES TO AVOID INTERFERENCE WITH EXHAUST FAN &amp; ASSOCIATED DUCTWORK &amp; TO ENSURE SUFFICIENT HANGERS TO SAFELY SUPPORT NEW LIGHT FIXTURES.</p> <p>7 INSTALL CEILING NEATLY &amp; SYMMETRICALLY TO TRUE LINES, EVENLY BALANCED TO PATTERN SHOWN ON DRAWINGS &amp; LEVEL TO WITHIN 1:1000.</p> <p>8 PROVIDE OWNER WITH 5 SPARE CEILING TILES.</p>	<p><b>ELECTRICAL</b></p> <p>1 REFER TO ARCHITECTURAL DRAWINGS FOR ELECTRICAL WORK &amp; SPECIFICATION NOTES.</p> <p>2 PERFORM WORK IN ACCORDANCE WITH ELECTRICAL SAFETY CODE, CURRENT EDITION, BASED UPON CANADIAN ELECTRICAL CODE, PART 1, CSA STANDARD C22.1 &amp; ALL BULLETINS ISSUED TO DATE.</p> <p>3 OBTAIN ESA INSTALLATION PERMIT PRIOR TO COMMENCING WORK, &amp; ARRANGE FOR ESA INSPECTIONS OF WORK.</p> <p>4 PROVIDE CSA APPROVED MATERIALS ONLY.</p> <p>5 PROVIDE POWER DEVICES &amp; LIGHT FIXTURES SPECIFIED IN PLAN LEGEND &amp; IN QUANTITY &amp; LOCATIONS SHOWN ON FLOOR &amp; CEILING PLANS. INCLUDE HARD WIRING FOR DEVICES REQUIRING POWER, INCLUDING EQUIPMENT SHOWN ON MECHANICAL DRAWINGS.</p> <p>6 MOUNTING HEIGHTS FOR DEVICES ARE AS SHOWN ON EXTERIOR &amp; INTERIOR ELEVATION DRAWINGS. FOR DEVICES NOT SHOWN, CONSULT WITH ARCHITECT PRIOR TO INSTALLATION TO CONFIRM LOCATIONS.</p> <p>7 COORDINATE DEVICE BOX LOCATIONS WITH MASON TO ENSURE PROVISIONS FOR DEVICES REQUIRED TO BE RECESSED INTO MASONRY ARE ACCOUNTED FOR. INSTALL ALL WORK IN ACCORDANCE WITH CODE REQUIREMENTS.</p> <p>8 PERFORM TESTING OF SYSTEMS AS REQUIRED BY CODE. AT COMPLETION OF WORK, FORWARD COPY OF ESA CERTIFICATES OF ACCEPTANCE TO ARCHITECT.</p>
<p><b>ELECTRICAL</b></p> <p>10 REMOVE EXISTING POWER OUTLETS SHOWN ON DRAWINGS TO BE REMOVED, INCLUDING ASSOCIATED WIRING &amp; CONDUIT FROM OUTLET BOXES BACK TO ELECTRICAL PANEL.</p> <p>11 DISCONNECT EXISTING LIGHT FIXTURES SHOWN ON DRAWINGS TO BE REMOVED, INCLUDING ASSOCIATED SWITCHES, WIRING &amp; CONDUIT FROM BOXES BACK TO ELECTRICAL PANEL.</p>	<p><b>CONCRETE</b></p> <p>1 PROVIDE MIXED, PLACED &amp; CURED CONCRETE IN ACCORDANCE WITH CAN3-A438-M, AS SHOWN ON DRAWINGS &amp; DETAILS.</p> <p>2 POROUS FILL UNDER SLABS IS TO CONSIST OF CLEAN, COMPACTED PIT RUN GRAVEL OR CRUSHED STONE.</p> <p>3 REINFORCE SLAB-ON-GRADE WITH WELDED WIRE MESH CONFORMING TO CSA G30.5, 6x6 6/6.</p> <p>4 PROVIDE CONCRETE WITH COMPRESSIVE STRENGTH OF 25 MPa FOR FOOTINGS &amp; FLOOR SLAB AFTER 28 DAYS.</p> <p>5 MAINTAIN CONCRETE AT MIN. TEMPERATURE OF 10 DEGREES C. FOR 72 HOURS AFTER PLACING.</p> <p>6 HAND FINISH CONCRETE FLOOR TO STEEL TROWEL FINISH TO PRODUCE SMOOTH, DENSE SURFACE, FREE FROM RIDGES, VOIDS, OR TROWEL MARKS, &amp; READY FOR FLOOR FINISH NOTED ON DRAWINGS.</p> <p>7 PROTECT FOOTINGS, SLABS-ON-GRADE &amp; ADJACENT SOIL FROM FREEZING AT ALL TIMES DURING CONSTRUCTION.</p>	<p><b>FINISH CARPENTRY</b></p> <p>1 SUPPLY &amp; INSTALL HORIZONTAL WOOD SIDING, CORNER TRIM &amp; PERIMETER TRIM AROUND DOORS TO MATCH EXISTING HORIZONTAL SIDING &amp; TRIM.</p> <p>2 PROVIDE REQUIRED WOOD BLOCKING, GROUNDS, FURRING &amp; STRAPPING, WHETHER SHOWN ON DRAWINGS OR NOT, FOR SATISFACTORY INSTALLATION OF SOLID WOOD TRIM &amp; FABRICATED ITEMS.</p>	<p><b>REINFORCING STEEL</b></p> <p>1 CONFORM TO G30.18 GRADE 400. PLACEMENT IS TO CONFORM TO RS10 MANUAL OF STANDARD PRACTICE.</p> <p>2 ENSURE EMBEDDED METALS ARE FREE OF GREASE &amp; ANY AGENT THAT MAY INHIBIT BOND WITH CONCRETE. PLACE ALL EMBEDDED METALS PRIOR TO POURING CONCRETE.</p> <p>3 EXTEND HORIZONTAL REINFORCING AROUND CORNERS USING STANDARD HOOKS.</p> <p>4 LAP SPLICES TO CONFORM TO CSA CAN3-A23.3, UNLESS NOTED OTHERWISE. ASSUME CLASS B SPLICE. -MIN. SPLICE LENGTH FOR 10M BAR, 400mm OR 16". -MIN. SPLICE LENGTH FOR 15M BAR, 600mm OR 24".</p> <p>5 PROVIDE MIN. 75mm OR 3" CLEAR CONCRETE COVER WHEN CONCRETE IS PLACED AGAINST GROUND.</p>	<p><b>MECHANICAL</b></p> <p>9 REFER TO MECHANICAL DRAWINGS FOR SELECTIVE DEMOLITION SCOPE OF WORK.</p>	<p><b>MECHANICAL</b></p> <p>9 REFER TO MECHANICAL DRAWINGS FOR SELECTIVE DEMOLITION SCOPE OF WORK.</p>



148 WALTON STREET, UNIT 1, PORT HOPE, ONTARIO L1A 1N6, CANADA  
TEL: (905) 885-8729 www.picciniarchitect.com

THESE DRAWINGS, DETAILS AND SPECIFICATIONS ARE A CONFIDENTIAL AND PROPRIETARY WORK PROTECTED UNDER COPYRIGHT. ALL RIGHTS ARE RESERVED. THEY ARE THE PROPERTY OF PICCINI ARCHITECT AND MAY NOT BE REPRODUCED BY ANY MEANS, ALTERED OR RE-USED WITHOUT THE EXPRESS WRITTEN PERMISSION OF PICCINI ARCHITECT.



THESE DRAWINGS, DETAILS AND SPECIFICATIONS ARE NOT TO BE USED FOR CONSTRUCTION UNTIL COUNTER SIGNED BY THE ARCHITECT.

NO.	DATE	ISSUE/REVISION FOR:	BY:
	D.M.Y.	DESCRIPTION	INIT.
1	02.12.22	CLIENT REVIEW	RP
2	30.05.25	BUILDING PERMIT & PRICING	RP

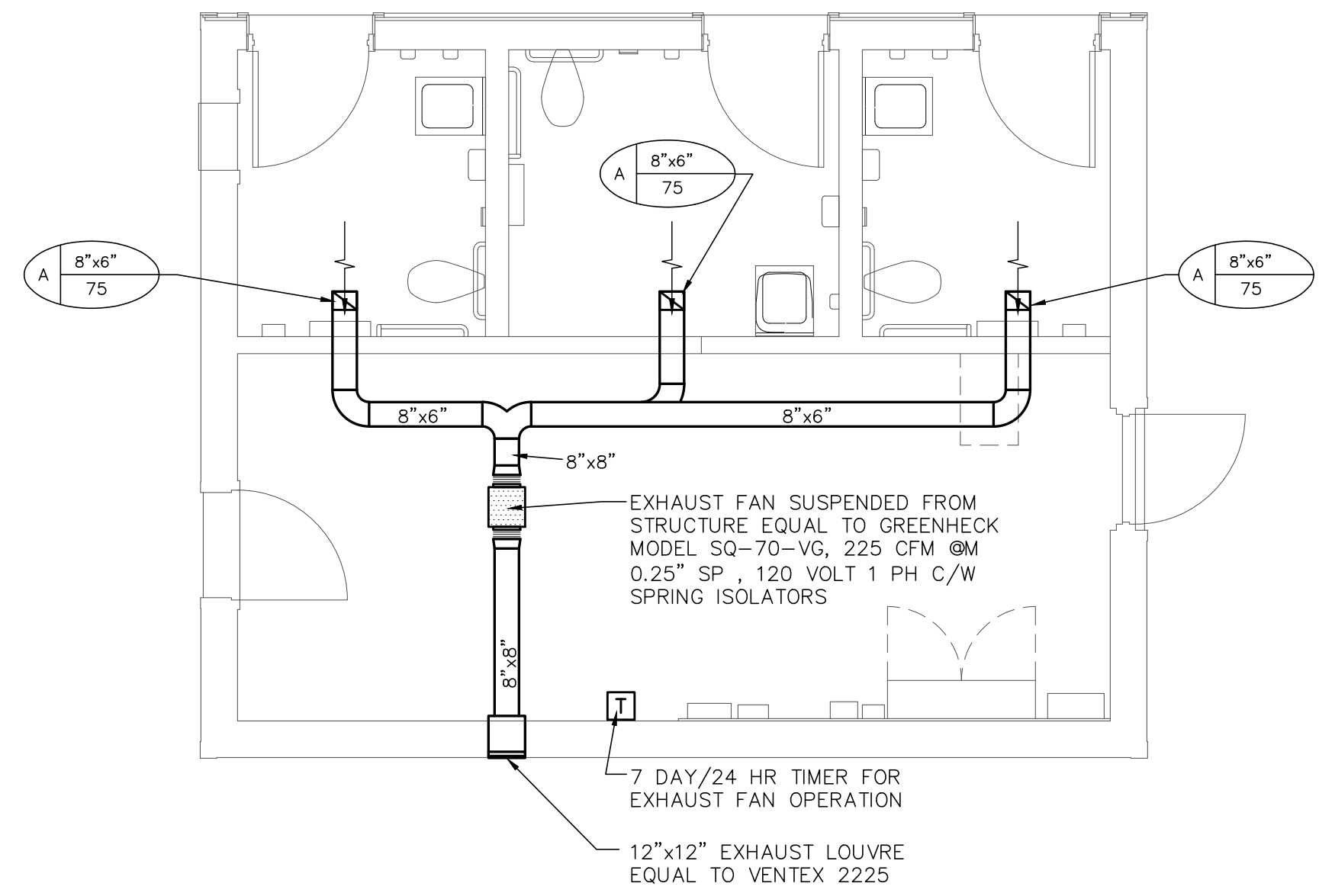
**RENOVATIONS TO THE VICTORIA PARK CANTEN**

PARKS DEPARTMENT  
740 DIVISION STREET  
BUILDING #7  
COBOURG, ON K9A 0H6

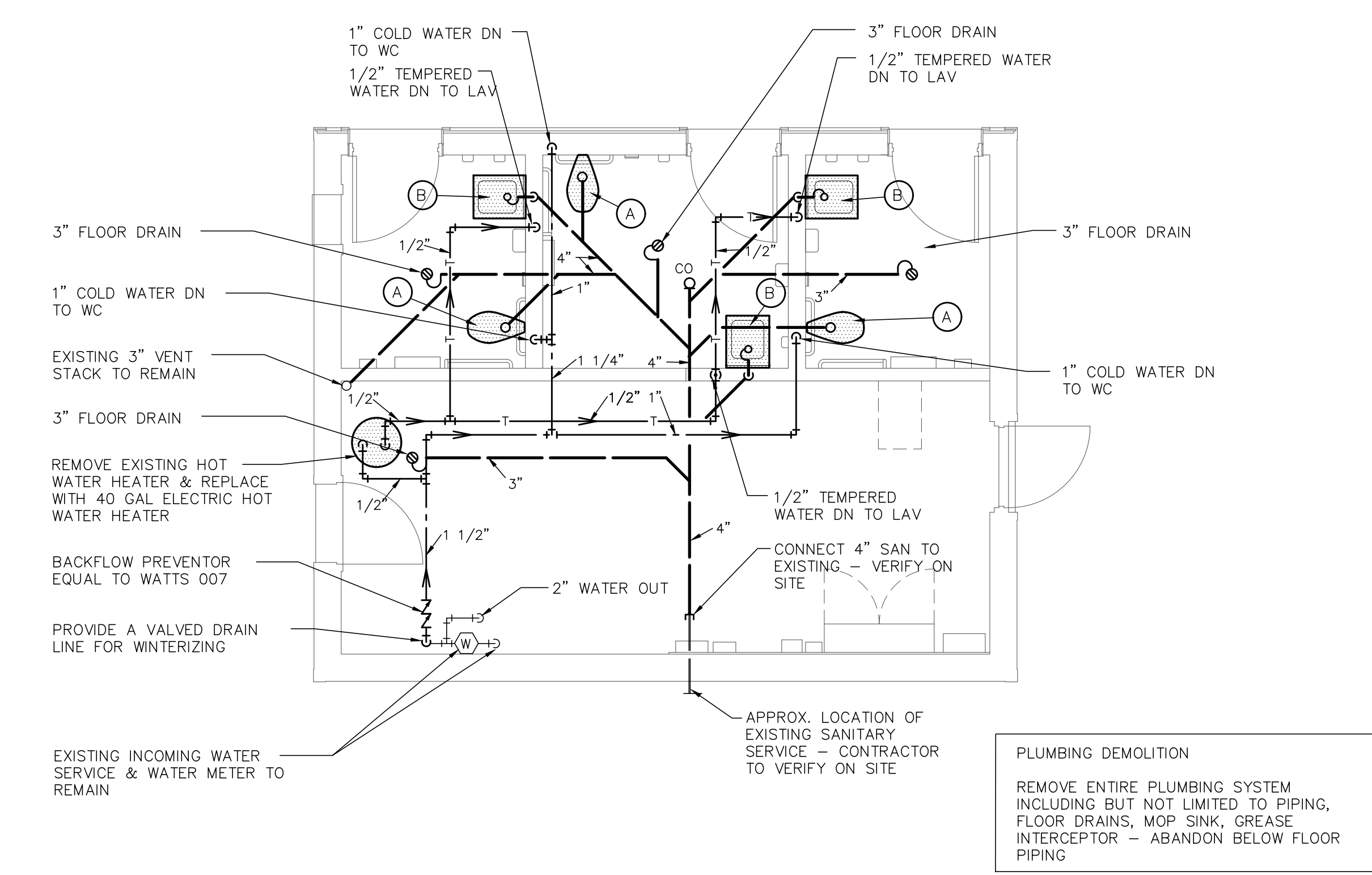
SHEET TITLE:

**SPECIFICATIONS**

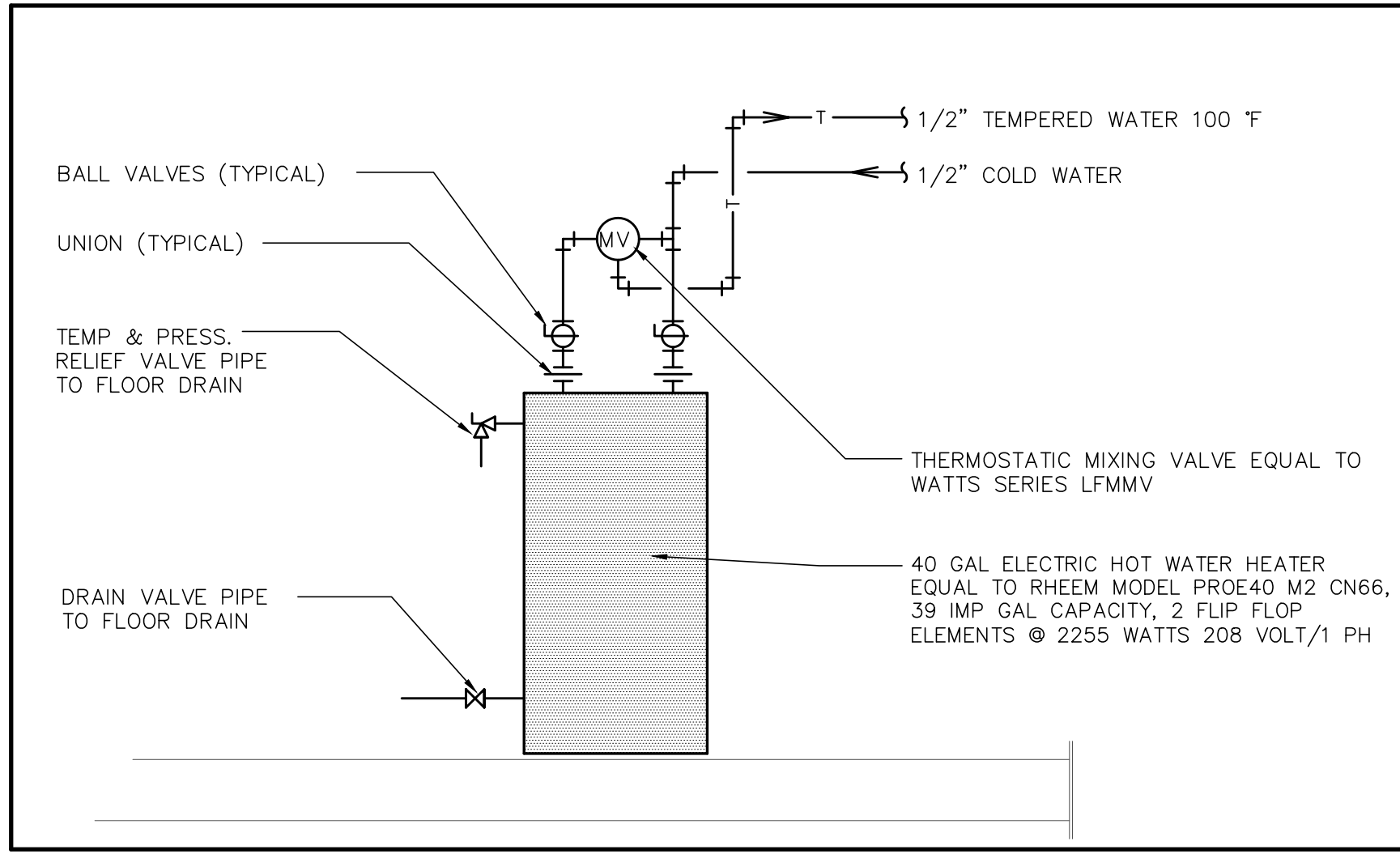
DRAWN BY: RP	CHK'D BY: RP
PROJECT NO: 22.345	DATE: SEPT. 2022



2 GROUND FLOOR PLAN - VENTILATION  
M1 SCALE: 1/4" = 1'-0"



1 GROUND FLOOR PLAN - PLUMBING & DRAINAGE  
M1 SCALE: 1/4" = 1'-0"



1 DETAIL WATER HEATER  
M1 SCALE: NTS

LEGEND	
SYMBOL	DESCRIPTION
	SANITARY ABOVE GROUND
	SANITARY BELOW GROUND
	DOMESTIC COLD WATER
	DOMESTIC HOT WATER
	TEMPERED WATER
	SANITARY VENT
	SIDEWALL SUPPLY OR RETURN GRILLE
	PLUMBING FIXTURE DESIGNATION
TYPE  SIZE  FLOW (CFM)	DIFFUSER DESIGNATION TYPE - REFER TO SCHEDULE SIZE - DIFFUSER NECK OR GRILLE SIZE

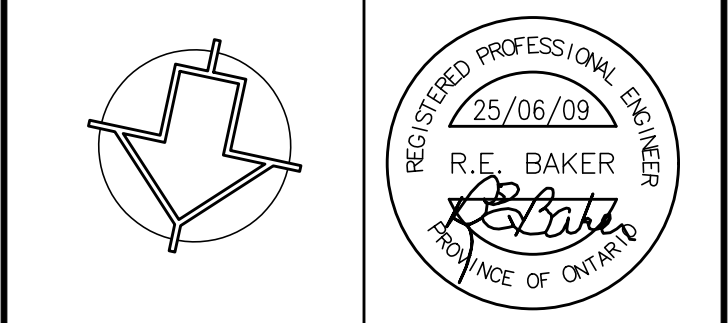
DIFFUSER & GRILLE SCHEDULE				
TYPE	MANUFACTURER	FUNCTION	MODEL	REMARKS
A	E.H. PRICE	EXHAUST	535D/F/L/A/B12	STEEL SINGLE BLADE 13mm (1/2") SPACING, 32 (1-1/4") FLAT BORDER, DRYWALL MOUNTING OPPOSED BLADE DAMPER, WHITE FINISH

PLUMBING FIXTURE SCHEDULE							APPROVED ALTERNATES: CRANE, MAAX, MOEN, MIROLIN, KHOLER		
NO.	DESCRIPTION	HOT WATER	TEMP. WATER	COLD WATER	DRAIN	VENT	FIXTURE MAKE & MODEL	TRIM MAKE & MODEL	REMARKS
A	WATER CLOSET - BARRIER FREE	-	-	1"	3"	1 1/2"	AMERICAN STANDARD "MADERA" 3461.001 ELONGATED BOWL, TOP SPUD, FLUSH VALVE HIGH EFFICIENCY ELONGATED FRONT, 1.27 GPF, (4.8 LPF) 2 1/8" GLAZED TRAPWAY, 16 1/2" HIGH	DELTA 81T221HWA-48 ELECTRONIC FLUSH VALVE, 1 1/2" TOP SPUD WITH SENSOR ON VALVE, 24" HEIGHT C/W HARD WIRE OPERATION	CENTOCO 820STS.001 HEAVY DUTY, OPEN FRONT WITH COVER FOR ELONGATED BOWL. - STAINLESS STEEL CHECK HINGES, METAL WASHERS & STAINLESS STEEL POSTS AND NUTS
B	LAVATORY - BARRIER FREE	-	1/2"	-	1 1/2"	1 1/4"	ELKAY MODEL WCLW019230SD-1, WITH REAR OVERFLOW, WALL HUNG, 18 GAUGE, 304 STAINLESS STEEL, 2 1/2" BACK SPLASH, BUFFED SATIN, SINGLE HOLE, 1 1/2" DRAIN, 19x23x4" DP	DELTA 590T0158TR, ELECTRONIC FAUCET, DECKMOUNT CAST HIGH RISE SPOUT, VANDAL RESISTANT 0.5 GPM AERATOR WITH INTEGRAL SENSOR, 12" STAINLESS STEEL COVER, DRIVER BOARD, SOLENOID, 24 VAC OPERATION, C/W ELAVT0001ARI RECESSED CONTROL BOX	FOR TEMPERED WATER C/W OPEN GRID DRAIN, OVERFLOW ASSEMBLY. FLEXIBLE SUPPLY - MOUNT CONTROL BOX IN WALL UNDER SINK - ALL EXPOSED DRAIN & TRAP TO BE CHROME PLATED

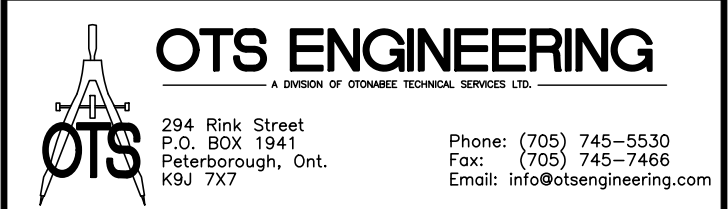
NOTE: FOR ELECTRONIC TRIM CONTRACTOR TO SIZE AND SUPPLY TRANSFORMERS TO SUIT NUMBER OF FIXTURES - SEE ELECTRICAL DRAWINGS FOR LOCATION OF POWER FOR TRANSFORMERS - PLACE TRANSFORMERS IN SERVICE SPACE IN ACCESS BOX

- GENERAL NOTES
- ALL DUCTWORK, PIPING & EQUIPMENT IS NEW UNLESS NOTED AS BEING EXISTING
  - VISIT AND EXAMINE SITE AND BECOME FAMILIAR WITH ALL EXISTING CONDITIONS AFFECTING WORK. NO ALLOWANCES WILL BE MADE BY THE OWNER FOR DIFFICULTIES ENCOUNTERED IN THE WORK ARISING OUT OF CONDITIONS EXISTING AT THE TIME OF TENDERING.
  - CONDITIONS SHOWN ON PLANS ARE RELATIVE TO THE WORK TO BE PERFORMED. DRAWINGS ARE BASED ON THE BEST INFORMATION AVAILABLE BUT ARE SUBJECT TO VERIFICATION. VERIFY EXACT LOCATION AND ELEVATION OF ALL SERVICES PRIOR TO COMMENCING ANY WORK. FAILURE TO TO PERFORM SUCH VERIFICATIONS WHICH CAUSE DEFICIENCIES SHALL BE CORRECTED AT NO EXPENSE TO OWNER
  - CO-ORDINATE INSTALLATION OF DUCTWORK, PIPING, EQUIPMENT ETC. WITH ARCHITECTURAL, STRUCTURAL, ELECTRICAL & FIRE PROTECTION TRADES PRIOR TO INSTALLATION

NO.	DESCRIPTION	ISSUES	DATE	BY
1	ISSUED FOR PERMIT		25/06/09	REB
0	ISSUED FOR CLIENT REVIEW		NOV 30/22	SMS



THIS DRAWING IS AN INSTRUMENT OF PROFESSIONAL SERVICE FOR USE EXCLUSIVELY ON THIS PROJECT. RE-USE OF ANY PORTION OF THIS DOCUMENT IS PROHIBITED. COPYRIGHT 2022 - OTONABEE TECHNICAL SERVICES LTD.



PROJECT  
VICTORIA PARK  
CANTEEN RENOVATIONS  
138 DIVISION STREET  
COBOURG ONTARIO

TITLE  
FLOOR PLANS -  
MECHANICAL

SCALE	AS NOTED	DWG NO.	
DRAWN	S. STRANAGHAN	<b>M1</b>	
DESIGNED	S. STRANAGHAN		
CHECKED	REB		
PROJECT	22046	REV.	OCT 2022 CADD FILE NO. 22046M01

Plot Date: Jun 09, 2025, 7:24 am By: rjcbaker  
 E:\projects\2022\22046 - Victoria Park Canteen Renovations\Drawings\22046M01.dwg

GENERAL SPECIFICATION

- 1. PROVIDE ALL EQUIPMENT, MATERIALS, LABOUR AND SERVICES, ETC. NECESSARY TO COMPLETE THE WORK. ALL MATERIALS AND EQUIPMENT USED ARE TO BE NEW AND ARE TO HAVE C.S.A. APPROVAL. MATERIALS AND EQUIPMENT ARE SPECIFIED BY NAME TO ESTABLISH A STANDARD OF QUALITY AND WORKMANSHIP. USE ONLY SPECIFIED EQUIPMENT OR ALTERNATES NOTED.
2. VISIT AND EXAMINE THE SITE AND BECOME FAMILIAR WITH ALL EXISTING CONDITIONS AFFECTING THE WORK PRIOR TO SUBMITTING TENDER. NO ALLOWANCES IN COST WILL BE MADE BY THE OWNER FOR ANY DIFFICULTIES ENCOUNTERED IN THE WORK ARISING OUT OF CONDITIONS EXISTING AT THE TIME OF TENDERING.
3. OBEY ALL APPLICABLE CODES AND REGULATIONS OF ALL GOVERNING AUTHORITIES HAVING JURISDICTION OVER THE WORK.
4. WHERE THE SUPPLY OF AN ITEM IS SPECIFIED GENERALLY ONLY WITHOUT EXTENSIVE DETAIL, THIS IMPLIES THE ITEM AND/OR WORK SHALL CONFORM WITH THE REQUIREMENTS OF THE GOVERNING AUTHORITY AND/OR MANUFACTURER'S RECOMMENDATIONS.
5. CONFORM TO THE BEST PRACTICES APPLICABLE TO THIS TYPE OF WORK. INSTALL ALL EQUIPMENT AND SYSTEMS IN ACCORDANCE WITH THE MANUFACTURER'S RECOMMENDATION BUT CONSISTENT WITH THE GENERAL REQUIREMENTS OF THIS SPECIFICATION.
6. ARRANGE AND PAY FOR ALL PERMITS, INSPECTION FEES, CERTIFICATES, ETC. CONNECTED WITH THE WORK.
7. OBTAIN FROM THE CONSULTANT TWO EXTRA SETS OF WHITE PRINTS ON WHICH TO NOTE AND CLEARLY MARK ANY APPROVAL DEVIATIONS FROM THE WORK SHOWN ON THE PLANS AS THE JOB PROGRESSES. THESE SETS OF PRINTS SHALL BE KEPT UP TO DATA AND RETURNED TO THE OWNER FOR RECORD PURPOSES AT THE COMPLETION OF THE JOB.
8. PERFORM ALL TESTS REQUIRED BY THE AUTHORITIES HAVING JURISDICTION, SUPPLYING THEREFORE ALL NECESSARY EQUIPMENT AND LABOUR.
9. GUARANTEE ALL WORK FOR A PERIOD OF ONE YEAR. IT SHALL BE UNDERSTOOD THAT IF ANY DEFECTS BECOME EVIDENT WITHIN THE GUARANTEE PERIOD, ALL NECESSARY REPAIRS AND REPLACEMENTS TO THE WORK SHALL BE MADE WITHOUT COST TO THE OWNER. ALSO PAY FOR MAKING GOOD ANY OTHER WORK DAMAGED THROUGH DEFECTS IN THE WORK OF THIS CONTRACT DURING BOTH CONSTRUCTION AND GUARANTEE PERIODS.
10. PROVIDE HANGERS FOR ALL PIPES AND DUCTS AND AVOID ANY DIRECT CONTACT OF DISSIMILAR METALS. SPACE HANGERS TO PREVENT SAGGING OR LOADING JOINTS.
11. HANGERS SHALL ONLY BE SUSPENDED FROM STRUCTURAL BEARINGS SUCH AS STEEL BEAMS OR TOP CHORD OF JOISTS. WHERE SUCH BEARINGS DO NOT EXIST, USE NECESSARY BRIDGING STEEL.
12. PROVIDE SUPPORTS FOR EQUIPMENT INSTALLED IN THIS CONTRACT, INCLUDING HANGER RODS AND SPRING VIBRATION ISOLATORS.
13. PROVIDE MOTORS AND DRIVES FOR ALL POWERED EQUIPMENT OF CANADIAN MAKE AND LOCALLY SERVICEABLE MANUFACTURE.
14. SUBMIT 1 ELECTRONIC ( PDF) COPY OF SHOP DRAWINGS OF EACH PIECE OF MANUFACTURED EQUIPMENT TO CONSULTANT FOR REVIEW.
15. RUN IN ADJUST AND BALANCE THE SYSTEMS FOR PROPER OPERATION.
16. ALL EQUIPMENT, PIPING, DUCTWORK, ETC. IS NEW UNLESS NOTED AS BEING EXISTING.
17. VERIFY EXACT LOCATION AND ELEVATION OF ALL EXISTING SERVICES PRIOR TO COMMENCING ANY WORK.
18. MAINTAIN ALL NECESSARY INSURANCE TO PROTECT THE OWNER AND ALL TRADES FROM ALL POSSIBLE CLAIMS DURING THE CONSTRUCTION PERIOD.
19. DO ALL NECESSARY REQUIRED CUTTING AND PATCHING AS MAY BE REQUIRED TO PERFORM THE WORKS OF THIS CONTRACT. CUTTINGS SHALL BE KEPT TO A MINIMUM, AND SHALL BE PERFORMED WITH CLEAN CUT STRAIGHT EDGES. PATCHING SHALL BE NEAT AND CLEAN AND RESTORE TO ORIGINAL FINISH CONDITIONS USING SIMILAR TYPES TO MATERIALS. USE ONLY TRADES PERSONNEL SKILLED IN THE VARIOUS TYPES OF WORK REQUIRED (i.e. MASONS, ROOFERS, ETC.).
20. UPON COMPLETION, REMOVE ALL WASTES, MATERIAL, ETC. AND LEAVE SITE IN CLEAN CONDITION.
21. AT PROJECT COMPLETION AND PRIOR TO FINAL INSPECTION DELIVER TO THE CONSULTANT THREE (3) COMPLETE SETS OF OPERATION AND MAINTENANCE DATA FOR ALL EQUIPMENT SUPPLIED. SUBMIT THREE (3) VINYL HARDED COVERED LOOSE LEAF BINDERS, INFORMATION REQUIRED IN THESE MANUALS IS DATA PERTAINING TO EFFICIENT OPERATING AND MAINTAINING OF EQUIPMENT, INCLUDING EQUIPMENT INSTALLATION INSTRUCTIONS SUPPLIED BY MANUFACTURER. INCLUDE FINAL REVIEWED SHOP DRAWINGS THAT HAVE BEEN SUBMITTED. COMPLETED SUBMISSION MUST BE INDEXED AND DIVIDED BETWEEN INDIVIDUAL COMPONENTS.
22. PROVIDE & PAY FOR SERVICES OF FULLY EXPERIENCED TECHNICIAN TO INSTRUCT PERSONNEL DESIGNATED BY THE OWNER IN THE PROPER OPERATION AND MAINTENANCE OF ALL EQUIPMENT INSTALLED UNDER THIS CONTRACT INCLUDING CONTROLS, THERMOSTATS ETC.

SYSTEM FLUSHING AND CLEANING

- 1. FLUSH AND CLEAN FLUID-CARRYING SYSTEMS AFTER COMPLETION WITH CLEAR WATER AT HIGHEST OBTAINABLE PRESSURE AND VELOCITY. DISCHARGE FLUSHING WATER THROUGH STRAINERS AND OUT THROUGH SYSTEM DRAINS WITH HOSE END CLEAN STRAINERS. REPEAT FLUSHING OPERATION TO SATISFACTION UNTIL NO FOREIGN MATTER COLLECTS IN STRAINERS, DRAIN AND CLEAN TANKS AND INSPECT TUBING AND PASSAGEWAYS IN MAJOR EQUIPMENT AND CLEAN AS NECESSARY.
2. ENSURE THAT VALVES INCLUDING CONTROL VALVES ARE FULLY OPEN DURING FLUSHING.
3. PRIOR TO STARTING FANS AND AIR HANDLING EQUIPMENT INSPECT AND CLEAN THE OUTSIDE AND INSIDE OF THE AIR HANDLING SYSTEMS INCLUDING FANS, DUCTS, COILS, AND TERMINAL UNITS TO ENSURE THAT THEY ARE COMPLETELY FREE FROM DUST AND DEBRIS. INSTALL CLEAN FILTERS IN SYSTEMS REQUIRING FILTERS.
4. CLEAN POLISHED, PAINTED AND PLATED WORK. CLEAN ALL FIXTURES. REMOVE DEBRIS, SURPLUS MATERIAL AND ALL TOOLS FROM SITE.
5. CARRY OUT ADDITIONAL CLEANING OPERATIONS AND CHEMICAL TREATMENT ON SYSTEMS SPECIFIED IN OTHER SECTIONS OF THIS DIVISION. REFER ALSO TO GENERAL REQUIREMENTS FOR GENERAL CLEANUP OF SITE.

ACCESS PANELS AND DOORS

- 1. INSTALL CONCEALED MECHANICAL EQUIPMENT REQUIRING ADJUSTMENT OR MAINTENANCE IN LOCATIONS EASILY ACCESSIBLE THROUGH ACCESS PANELS OR DOORS. INSTALL SYSTEMS AND COMPONENTS TO RESULT IN A MINIMUM NUMBER OF ACCESS PANELS. INDICATE ACCESS PANELS AND DOORS ON 'AS BUILT' DRAWINGS.
2. PROVIDE OTHER RESPECTIVE DIVISIONS WITH PANELS, DOORS OR FRAMES TOGETHER WITH PERTINENT INSTALLATION INFORMATION. ENSURE ACCESS PANELS AND DOORS ARE INSTALLED IN A MANNER TO MATCH BUILDING MATERIAL AND GRIDS WHERE APPLICABLE.
3. IN WALLS, CEILINGS, ETC. USE ACCESS DOORS CONSTRUCTED OF 12 GAUGE STEEL WITH FRAME STYLE COMPATIBLE WITH BUILDING SURFACE IN WHICH IT IS MOUNTED, EQUIPPED WITH CONTINUOUS PIANO HINGES AND SCREWDRIVER OPERATED LATCHES. USE ULG LISTED DOORS IN FIRE RATED WALLS AND CEILINGS. USE ACCESS DOORS MANUFACTURED BY ACUDOR, MIFAB OR LEHAGE. PROVIDE ACCESS DOORS AS FOLLOWS UNLESS OTHERWISE NOTED:
- FOR ACCESS TO VALVES, BALANCING DAMPERS AND ITEMS REQUIRING ONLY HAND ACCESS USE 225mm X 225mm (9"x9").
- FOR ACCESS TO EQUIPMENT REQUIRING PERSONNEL ENTRY USE 600mm X 600mm (24"x24").
4. INSTALL AT EACH FIRE DAMPER AN ACCESS DOOR IN DUCT TO ALLOW FOR INSPECTION AND RESETTING OF RELEASE DEVICE. IF DUCT IS ENCLOSED IN AN ARCHITECTURAL FINISH, ALSO PROVIDE AN ACCESS DOOR IN FINISH AS DESCRIBED ABOVE FOR DAMPER ACCESS

PLUMBING & DRAINAGE

- 1. SANITARY DRAINAGE AND VENT PIPING ABOVE FLOOR SHALL BE PVC DWV CERTIFIED TO CSAB181.2. OR TYPE DWV HARD DRAWN COPPER TUBE WITH CAST BRASS SOLDER FITTINGS (USE 95/5 SOLDER), UP TO 63mm (2-1/2") COPPER OVERCAST IRON. NO NON APPROVED PVC TO BE LOCATED IN RETURN AIR CEILING SPACE.
2. SANITARY DRAINAGE AND VENT PIPING IN PLENUM SPACE SHALL BE CERTIFIED TO CSA B181.2 AND TESTED AND LISTED IN ACCORDANCE WITH CAN/ULC S102.2 AND CLEARLY MARKED WITH CERTIFICATION LOGO INDICATING FLAME SPREAD RATING NOT MORE THAN 25 AND SMOKE-DEVELOPED CLASSIFICATION NOT EXCEEDING 50. PIPING EQUAL TO IPEX SYSTEM XFR 15-50 DWV
3. SANITARY DRAINAGE AND VENT PIPING BELOW FLOOR SHALL BE ABS-DWV PIPING WITH SOLVENT WELD JOINTS FOR SIZES UP TO 63mm (2-1/2"). FOR SIZES 3" AND LARGER USE PVC PIPING WITH RING TITE COUPLINGS TO CSA182.1 (DR35 OR 28).
4. HOT AND COLD WATER PIPING SHALL BE TYPE 'L' HARD DRAWN COPPER TUBE WITH WROUGHT COPPER SOLDER FITTINGS (USE 95/5 SOLDER).
5. DOMESTIC WATER PIPING BELOW FLOOR SHALL BE TYPE 'K' SOFT DRAWN COPPER TUBE WITH BRONZE FLARE FITTINGS FOR SIZES UP TO 50mm (2").

INSULATION

- 1. COVER COLD WATER PIPING AND ABOVE HORIZONTAL STORM PIPING WITH 25mm (1") THICK JOHNS MANVILLE MICROLOK GLASS FIBRE DUAL TEMPERATURE INSULATION WITH FACTORY APPLIED FIRE RESISTANT GLASS FIBRE REINFORCED KRAFT PAPER AND ALUMINUM FOIL VAPOUR BARRIER, AND ALL SERVICE JACKET. USE PRESSURE SENSITIVE LAP SEALING SYSTEM. INSTALL INSULATION AS PER MANUFACTURER'S RECOMMENDATIONS

Table with 2 columns: TEMPERATURE RANGE DEG F, MINIMUM HOT WATER PIPE SIZES. Rows include 105' to 140' and nominal pipe sizes from 3/4" to 1.5".

- 2. ALL EXPOSED INSULATIONS SHALL BE COVERED WITH WHITE PVC INSULATED FITTING COVERS AND JACKETING SYSTEM EQUAL TO JOHNS MANVILLE ZESTON 2000. INSTALL AS PER MANUFACTURER'S RECOMMENDATIONS

VALVES

- 1. BALL VALVES SHALL BE EQUAL TO NEWMAN HATTERSLEY FIG 1979 , FULL PORT, PTFE SEATS, O-RING STEM SEAL, SELF CLEANING CHROME PLATED BRASS BALL, VINYL GRIP ON CADMIUM PLATED STEEL HANDLE, SOLDER ENDS WITH PRESSURE RATING OF 600 LBS. ALTERNATES: WATTS, TOYO
2. GATE VALVES SHALL BE EQUAL TO NEWMAN HATTERSLEY FIG A41, BRONZE BODY, SOLID WEDGE DISC, INTERNAL SEATS, SOREW OVER BONNET, SOLDER JOINT ENDS. ALTERNATES : WATTS TOYO - KITZ.

PIPELINE SPECIALTIES

- 1. TRAP PRIMERS SHALL BE WITH BRONZE BODY, 16mm (5/8") SWEAT CONNECTIONS FOR WATER SUPPLY LINE AND 16mm (5/8") FEMALE IPS OUTLET CONNECTION TO DRAIN. CONNECT TO NEAREST PLUMBING FIXTURE WATER SUPPLY. ALTERNATES: WATTS/ANCON, J.R.SMITH, ZURN
2. ELECTRONIC TRAP PRIMING MANIFOLD SHALL BE EQUAL TO PPP INC MODEL PT SERIES (SIZE AS NUMBER OF TRAPS) 120 VOLT - INSTALL AS PER MANUFACTURER'S RECOMMENDATIONS
3. PIPELINE SHOCK ABSORBERS SHALL BE WITH 18-8 STAINLESS STEEL CONSTRUCTION, AIR CHARGED BELLOW AND THREADED MALE OUTLETS. ALTERNATES: WATTS/ANCON, J.R.SMITH, ZURN

CLEANOUTS

- 1. UNFINISHED AND FINISHED AREA CLEANOUTS SHALL BE WITH BOLTED CLEANOUT PLUG, NICKEL BRONZE FRAME, ROUND FULL OPENING NICKEL BRONZE ACCESS COVER, EXTENDED FERRULE, NEOPRENE GASKETS AND VANDAL PROOF SCREWS. EQUALS: WATTS/ANCON, J.R.SMITH, ZURN.
2. CONCEALED STACK CLEANOUTS SHALL BE ZURN ZSS-1445-1 CAST IRON CLEANOUT TEE AT BASE OF CONCEALED STACKS, AND ROUND STAINLESS STEEL ACCESS COVER. EQUALS: WATTS/ANCON, J.R.SMITH, ZURN.

FLOOR DRAINS

- 1. FLOOR DRAINS IN CONC FLOOR TYPE "A" SHALL BE WITH CAST IRON BODY, TRAP PRIMER, 13mm (1/2") THICK 125mm (5") DIAMETER NICKEL BRONZE, STRAINER AND GRATE. EQUALS: WATTS/ANCON, J.R. SMITH, ZURN.

PLUMBING INSTALLATION

- 1. PROVIDE A COMPLETE DOMESTIC HOT AND COLD WATER DRAINAGE AND VENT TO SERVE FIXTURES AND ITEMS SPECIFIED AND SHOWN ON PLANS. INSTALL AS PER OBC PART 7 AND AUTHORITY HAVING JURISDICTION.
2. ROUTE ABOVE GROUND PIPING IN CEILING SPACE OR WALL INTERIORS FOR CONCEALMENT WHERE EVER POSSIBLE UNLESS SPECIFICALLY NOTED OTHERWISE ON DRAWINGS. CO-ORDINATE PIPE INSTALLATION IN WALLS WITH MASON AND OR DRYWALLER OR APPROPRIATE TRADE INVOLVED.
4. INSTALL ISOLATION VALVES IN EACH BRANCH LINES FROM MAINS AND AT BASE OF EACH RISER. PROVIDE A FIRE RATED ACCESS DOOR AT EACH CONCEALED VALVE.
5. INSTALL PIPING STRAIGHT PARALLEL AND CLOSE TO WALLS AND CEILINGS, WITH APPROPRIATE PITCH. USE STANDARD FITTINGS FOR DIRECTION CHANGES.
6. INSTALL FLANGES OR UNIONS TO PERMIT REMOVAL OF EQUIPMENT WITHOUT DISTURBING PIPING SYSTEMS.
7. PROVIDE COMPLETE DRAINAGE AND VENT SYSTEMS TO SERVE FIXTURES AND ITEMS SPECIFIED AND AS SHOWN ON PLANS.
8. INSTALL PIPING PASSING THROUGH FIRE SEPARATIONS WITH NON-COMBUSTIBLE MATERIAL ONE SIDE OF SEPARATION OR PROVIDE APPROVED FIRE STOPPING DEVICE
9. WHERE EXPOSED PIPES PASSES THROUGH FINISHED FLOORS, WALLS OR CEILINGS, PROVIDE CHROME PLATED ESCUTCHEON WITH SET SCREW.
10. GRADE HORIZONTAL DRAINAGE AND VENT PIPING LARGER THAN 75mm (3") AT 1.0% OR AS NOTED ON DRAWINGS AND SLOPE 75mm (3") AND SMALLER AT 2.0 % MIN
11. WHEN PIPE LAYING NOT IN PROGRESS, CLOSE OFF OPEN ENDS OF PIPE WITH WATER TIGHT PLUG OR CAP.
12. INSTALL CLEANOUTS AS PER THE PLUMBING CODE AND/OR AS SHOWN ON DRAWINGS. ENSURE CLEAN OUTS ARE MADE ACCESSIBLE. WHERE PIPING RUNS CONCEALED IN WALL INSTALL EXTENDED TYPE CLEANOUTS WHERE NECESSARY SO THAT COVER IS LOCATED ON EXPOSED WALL SURFACE.
13. INSTALL FLOOR DRAINS SO THAT STRAINER IS FLUSH WITH FINISHED FLOOR AND WITH TRAP PRIMER PIPED TO NEAREST PLUMBING FIXTURE WATER SUPPLY.

INSTALLATION OF PLUMBING FIXTURES

- 1. CONNECT FIXTURES COMPLETE WITH SUPPLIES AND DRAINS, TRAPPED, SUPPORTED, SANITARY LEVEL AND SQUARE WITH HOT WATER FAUCETS ON THE LEFT.
2. PROVIDE CHROME PLATED FLEXIBLE SUPPLIES TO FIXTURES WITH SCREWDRIVER STOPS, REDUCERS AND ESCUTCHEONS.
3. PROVIDE CHROME PLATED TRAPS & PIPING EXPOSED TO VIEW UNDER LAVATORIES

DUCTWORK AND ACCESSORIES

- 1. UNLESS NOTED OTHERWISE CONSTRUCT LOW PRESSURE RECTANGULAR DUCTWORK OF LOCK FORMING PRIME QUALITY GALVANIZED SHEET STEEL WITH ZINC COATING ASTM 525M-80 GUARANTEED TO BEND 180° AND FLATTEN WITHOUT FRACTURE OF GALVANIZATION OR METAL. ENSURE DUCT MATERIAL IS FREE FROM BUSTERS, PITS AND IMPERFECTLY COATED SPOTS, AND IS IN ACCORDANCE WITH ASHRAE AND SMACNA STANDARDS FOR DUCT DESIGN AND METAL GAUGES.

CONSTRUCT DUCTS IN ACCORDANCE WITH FOLLOWING:

Table with 2 columns: MAX. DUCT DIMENSION, U.S. GAUGE. Rows include UP TO 600mm (12"), 325mm (13") TO 750mm (30"), 775mm (31") TO 1350mm (54").

- 2. CONSTRUCT ROUND GALVANIZED DUCTWORK USING SAME MATERIAL AS RECTANGULAR DUCTWORK EXCEPT DUCT TO BE WOUND HELICOIDALLY TO VARIOUS DIAMETERS REQUIRED, WITH FOUR PLY LOCKSEAM TIGHTLY CLOSED TO PROVIDE A SMOOTH INTERIOR. PROVIDE FITTINGS FOR ROUND DUCTWORK DIE STAMPED, SEAM WELDED, CALIBRATED AND HOT DIPPED GALVANIZED TYPE, NO JOB MADE FITTINGS WILL BE PERMITTED. CONSTRUCT ROUND DUCTS IN ACCORDANCE WITH FOLLOWING:

- 200mm (4") TO 400mm (8") DIAMETER - 26 GAUGE
225mm (9") TO 600mm (24") DIAMETER - 24 GAUGE
3. CONSTRUCT MANUAL BALANCING DAMPERS OF 18 GAUGE GALVANIZED STEEL WITH 4" WIDE OPPOSED BLADES WITH 3/8" DIAMETER BARS AND DURO DYNE UNLKD QUADRANT SET WITH HEAVY GAUGE INDICATING QUADRANT, LEVER ARM AND WING TYPE LOCKING NUT.
4. INSTRUMENT TEST PORTS SHALL BE DURO DYNE MODEL 1P-4 18mm (3/4") DIAMETER WITH NEOPRENE GASKETS, SCREW IN CAP AND MOUNTED WITH 2 SCREWS.

INSTALLATION OF DUCTWORK AND ACCESSORIES

- 1. PROVIDE COMPLETE SYSTEM OF DUCTWORK, DAMPERS, GRILLES, AND REGISTERS, ETC. REQUIRED FOR COMPLETE AIR HANDLING SYSTEMS.
2. DETAILS OF CONSTRUCTION AND MATERIALS NOT SPECIFIED HEREIN MUST CONFORM TO RECOMMENDATIONS OF ASHRAE HANDBOOK, AND SMACNA STANDARDS (LATEST EDITION).
4. PRIOR TO ORDERING OR FABRICATING DUCTS, CHECK EXACT SIZES OF OPENINGS AND LOCATIONS FOR ALL DUCTS.
5. PROVIDE ELBOWS WITH MINIMUM CENTER LINE RADIUS OF 1 1/2 TIMES DUCT WIDTH. WHERE THIS IS NOT POSSIBLE FIT ELBOWS WITH DOUBLE THICKNESS TURNING VANES. SHORT RADIUS ELBOWS ARE NOT ACCEPTABLE.
6. EXPOSED ANGLES MUST BE CLEANED AND PAINTED WITH ONE COAT OF RUST RESISTANT PAINT PRIOR TO INSTALLATION.
7. RECTANGULAR DUCTS OVER 450mm (18") WIDE MUST HAVE CROSS BREAKS ON FLAT SECTIONS BETWEEN JOINTS OR JOINTS AND REINFORCING.
8. PATTERN LONGITUDINAL SEAM JOINT AFTER PITTSBURGH OR LOCK-GROOVE TYPE LOCK.
9. TRANSVERSE JOINTS IN ROUND DUCTS MUST BE CRIMPED AND BEADED SLIP JOINT. TRANSVERSE JOINTS MAY BE CONSIDERED AS REINFORCING.
10. ALL DUCT JOINTS (TRAVERSE) SHALL BE CLASS "C" AND SEALED WITH APPROVED DUCT SEALANT ON EXTERIOR.

INSTALLATION OF AIR HANDLING EQUIPMENT

- 1. INSTALL AIR HANDLING EQUIPMENT, COMPLETE WITH MOTORS, BELT DRIVES GUARDS, VIBRATION ISOLATORS ETC., AS DESCRIBED AND SHOWN ON DRAWINGS. SET EQUIPMENT PLUMB, LEVEL, AND ARRANGE FOR MAXIMUM SERVICEABILITY.
2. FOR ROOF MOUNTED EQUIPMENT PROVIDE PREFABRICATED ROOF CURBS. PROVIDE GENERAL CONTRACTOR WITH EXACT LOCATION AND DIMENSIONS REQUIRED FOR CURBS
3. AT INLET AND OUTLET OF EACH PIECE OF AIR HANDLING EQUIPMENT, PROVIDE FLEXIBLE CONNECTIONS. WHERE CONNECTIONS ARE EXPOSED TO OUTSIDE BUILDING , PROVIDE WEATHERPROOF FLEXIBLE CONNECTIONS.
4. PROVIDE NECESSARY STRUCTURAL STEEL MEMBERS, RODS, BRACKETS, BOLTS, NUTS ETC TO SUPPORT AIR HANDLING EQUIPMENT

CONTROLS

- 1. THE CONTRACTOR IS TO INCLUDE ALL MECHANICAL SYSTEM CONTROLS CALLED FOR OR IMPLIED BY THE DRAWINGS AND SPECIFICATIONS, TOGETHER WITH ALL NECESSARY INCIDENTALS WHETHER REFERRED TO OR NOT TO ALLOW ALL SYSTEMS TO FUNCTION COMPLETELY TO THE FULL INTENT OF THE DRAWINGS AND SPECIFICATIONS
2. LOW VOLTAGE WIRING (< 50 VOLTS) TO BE BY MECHANICAL CONTRACTOR
3. LOW VOLTAGE WIRING TO BE SUITABLE FOR THE USE IN THE RETURN AIR PLENUM (PLENUM RATED LOW VOLTAGE WIRE)
4. WIRING IN THE MECHANICAL ROOM, SERVICE ROOMS AND ANY OTHER AREAS WHERE WIRING IS EXPOSED TO VIEW SHALL RUN IN EMT CONDUIT.

BALANCING OF AIR SYSTEM

- 1. BALANCING OF SYSTEMS MUST BE DONE BY A REPUTABLE QUALIFIED FIRM EXPERIENCED IN THIS TYPE OF WORK.
2. RUN-IN COMPLETE HEATING AND VENTILATING SYSTEM. AFTER CLEANING SYSTEM REMOVE FILTERS AND RE-INSTALL. LUBRICATE SHAFTS, SHEAVES, BEARINGS, ETC. IN ACCORDANCE WITH MANUFACTURER'S INSTRUCTIONS.
3. BALANCE, ADJUST AND PUT PARTS OF SYSTEM INTO PROPER WORKING ORDER, ADJUST, DAMPERS, CONTROLS, FAN SPEEDS, ETC., IN ORDER THAT PROPER DISTRIBUTION AND FLOW QUANTITIES ARE OBTAINED SO THAT COMPLETE JOB WILL BE LEFT READY FOR REGULAR OPERATION. ALL TO SATISFACTION OF CONSULTANT. SETTING UP AND BALANCING OF COMPLETE HEATING AND VENTILATING SYSTEMS TO BE DONE BY A TECHNICIAN EXPERIENCED IN THIS TYPE OF WORK.
4. BALANCE AIR SYSTEMS TO OBTAIN AIR FLOW CONDITIONS SPECIFIED AND GIVEN ON DRAWINGS. AFTER BALANCING HAS BEEN COMPLETE PREPARE AN AIR BALANCE REPORT INDICATING THE FOLLOWING. THREE COPIES TO BE SUBMITTED TO CONSULTANT.
5. BALANCING OF AIR SYSTEM

- FANS AND MOTORS:
- FAN RPM
- MOTOR RPM
- MOTOR CURRENT FOR ALL PHASES
- MOTOR VOLTAGE FOR ALL PHASES
- STATIC PRESSURE AT FAN INLET
- STATIC PRESSURE AT FAN DISCHARGE
- AIR CAPACITY

- VOLUME
- FRESH AND RETURN AIR VOLUMES
DIFFUSERS AND GRILLES
- AIR CAPACITY AT EACH OUTLET

GENERAL NOTES

- 1. ALL DUCTWORK, PIPING & EQUIPMENT IS NEW UNLESS NOTED AS BEING EXISTING
2. VISIT AND EXAMINE SITE AND BECOME FAMILIAR WITH ALL EXISTING CONDITIONS AFFECTING WORK. NO ALLOWANCES WILL BE MADE BY THE OWNER FOR DIFFICULTIES ENCOUNTERED IN THE WORK ARISING OUT OF CONDITIONS EXISTING AT THE TIME OF TENDERING.
3. CONDITIONS SHOWN ON PLANS ARE RELATIVE TO THE WORK TO BE PERFORMED. DRAWINGS ARE BASED ON THE BEST INFORMATION AVAILABLE BUT ARE SUBJECT TO VERIFICATION. VERIFY EXACT LOCATION AND ELEVATION OF ALL SERVICES PRIOR TO COMMENCING ANY WORK. FAILURE TO TO PERFORM SUCH VERIFICATIONS WHICH CAUSE DEFICIENCIES SHALL BE CORRECTED AT NO EXPENSE TO OWNER
4. CO-ORDINATE INSTALLATION OF DUCTWORK, PIPING, EQUIPMENT ETC. WITH ARCHITECTURAL, STRUCTURAL, ELECTRICAL & FIRE PROTECTION TRADES PRIOR TO INSTALLATION

Table with 4 columns: NO., DESCRIPTION, DATE, BY. Row 1: 1 ISSUED FOR PERMIT 25/06/09 REB. Row 2: 0 ISSUED FOR CLIENT REVIEW NOV 30/22 SMS.

ISSUES section with a circular stamp: REGISTERED PROFESSIONAL ENGINEER 25/06/09 R.E. BAKER, PROVINCE OF ONTARIO.

THIS DRAWING IS AN INSTRUMENT OF PROFESSIONAL SERVICE FOR USE EXCLUSIVELY ON THIS PROJECT. RE-USE OF ANY PORTION OF THIS DOCUMENT IS PROHIBITED. COPYRIGHT 2022 - OTONABEE TECHNICAL SERVICES LTD.

OTS ENGINEERING logo and contact information: 294 Rink Street, Peterborough, Ont. Phone: (705) 745-5530, Fax: (705) 745-7466, Email: info@otsengineering.com

PROJECT: VICTORIA PARK CANTENEN RENOVATIONS, 138 DIVISION STREET COBOURG ONTARIO. TITLE: SPECIFICATION MECHANICAL. SCALE: AS NOTED. DWG NO.: M2. PROJECT: 22046. REV. OCT 2022. CADD FILE NO. 22046M02.

Plot Date: Jun 09, 2025 - 2:24pm R.E. Baker