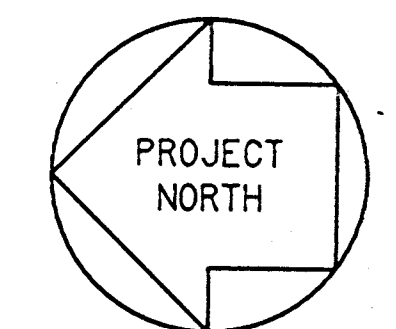
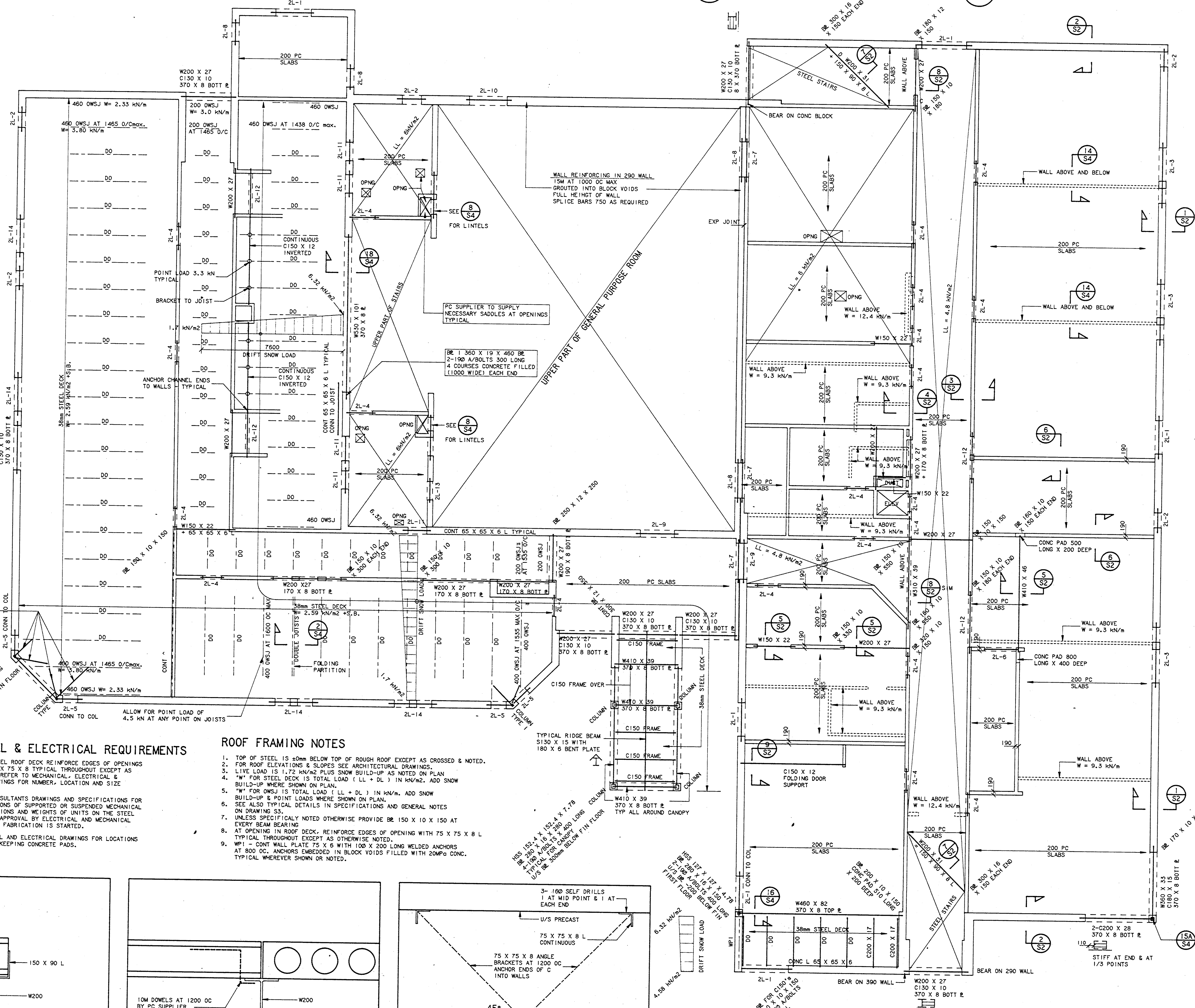


SECOND FLOOR AND LOW ROOF LINTEL SCHEDULE			
MARK	MATERIAL	TYPE	REMARKS
ZL-1	W200 X 27 C130 X 10 370 X 8 B	LL	SEE DETAIL 12/54 FOR STIFF PL AND 13/54 FOR ANCHOR BOLTS
ZL-2	3- 90 X 90 X 8 L's 370 X 8 BOTT R	JL	
ZL-3	W200 X 31 C130 X 10 370 X 8 BOTT R	LL	STIFFS & ANCHORS AS FOR ZL-1
ZL-4	2- 90 X 90 X 8 L's 370 X 8 BOTT R	JL	
ZL-5	3- 90 X 90 X 8 L's 370 X 8 BOTT R	JL	CONNECT TO COL'S
ZL-6	2- 125 X 90 X 8 L's 370 X 8 BOTT R	JL	LLV
ZL-7	2- 150 X 90 X 8 L's 370 X 8 BOTT R	JL	LLV
ZL-8	3- 150 X 90 X 8 L's 370 X 8 BOTT R	JL	LLV
ZL-9	4- 150 X 90 X 8 L's 370 X 8 BOTT R	JL	LLV
ZL-10	W200 X 31 C130 X 10 370 X 8 BOTT R	LL	STIFFS & ANCHORS AS FOR ZL-1
ZL-11	4- 90 X 90 X 8 L's 370 X 8 BOTT R	JL	
ZL-12	W200 X 27 170 X 8 BOTT R	JL	
ZL-13	3- 90 X 90 X 8 L's 370 X 8 BOTT R	JL	
ZL-14	3- 150 X 90 X 8 L's 370 X 8 BOTT R	JL	



**E.H. GOSLING**  
**GOSLING ENGINEERING LIMITED**  
 Consulting Engineers  
 207 ELLESMERE ROAD  
 SCARBOROUGH, ONTARIO  
 M1R 4E2 TEL 469-6500

ALL DIMENSIONS TO BE CHECKED AND VERIFIED ON THE JOB. ANY DISCREPANCIES TO BE REPORTED TO THE CONSULTANT. ALL DRAWINGS REMAIN THE PROPERTY OF THE CONSULTANT. LATEST APPROVED DRAWINGS ONLY TO BE USED FOR CONSTRUCTION.

For Reference only. These drawings are based on information provided by others and have not been field-verified by the Architect. Contractor shall verify all existing dimensions and conditions on-site prior to commencement of work.

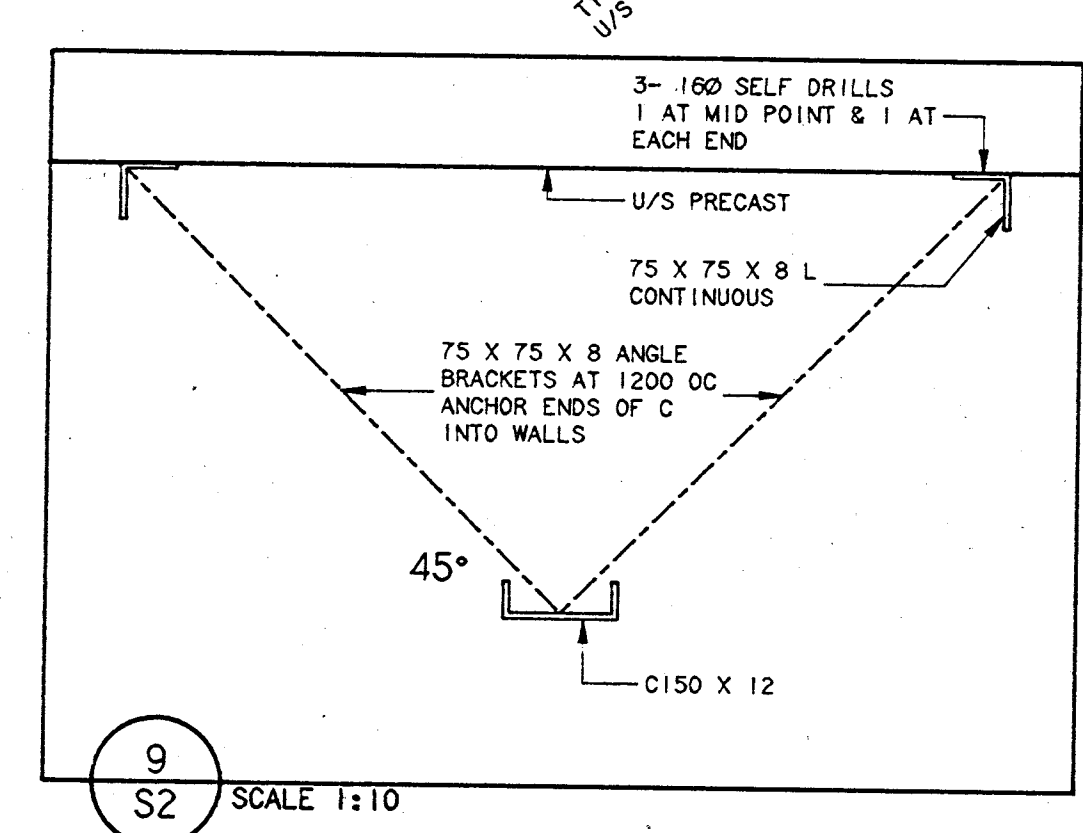
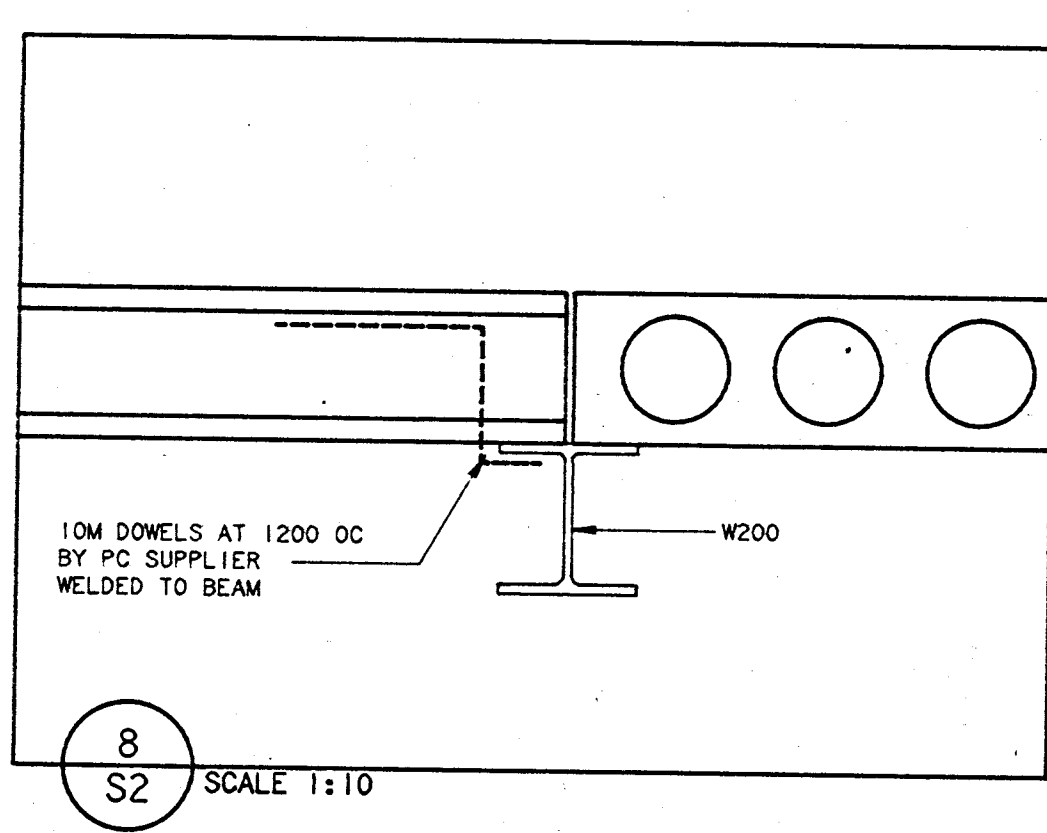
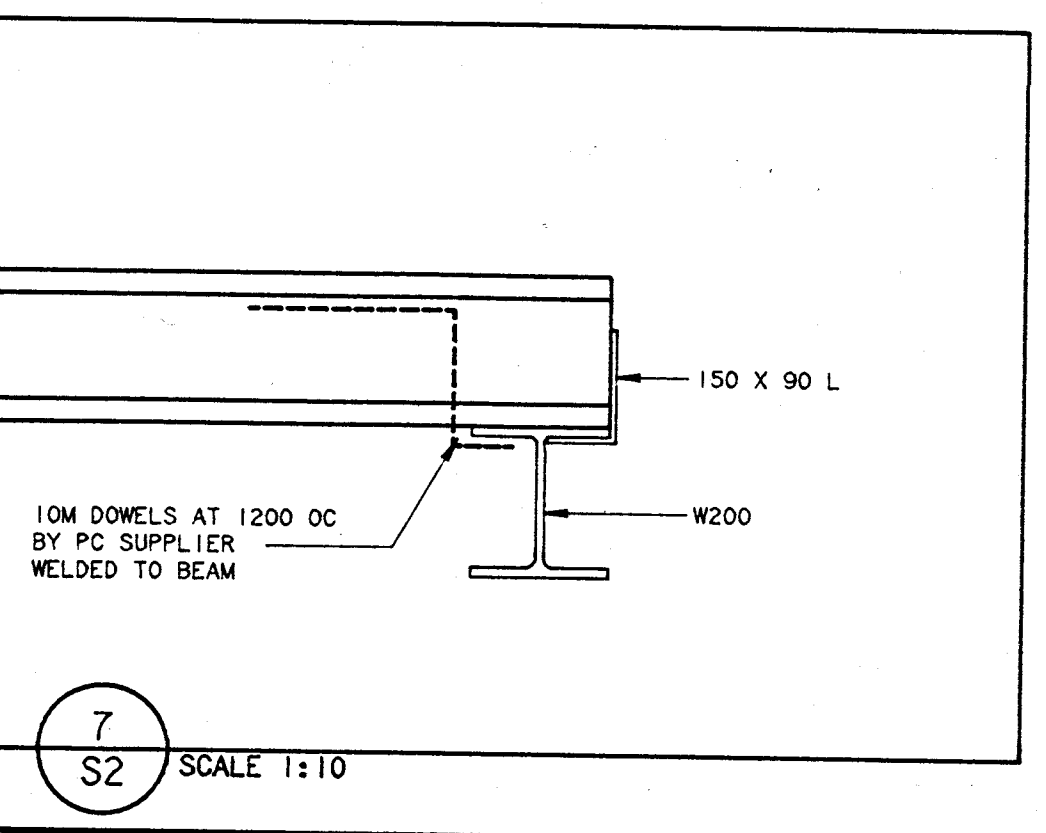
**SECOND FLOOR & LOW ROOF FRAMING PLAN**  
**UNNAMED BODDY SCHOOL**  
 GLENNAVA ROAD  
 PICKERING, ONTARIO  
 DURHAM BOARD OF EDUCATION

DATE: AUGUST 27 1986    JOB NO.    SHEET NO.  
 DRAWN BY: JF    8618    S2  
 SCALE: 1:100

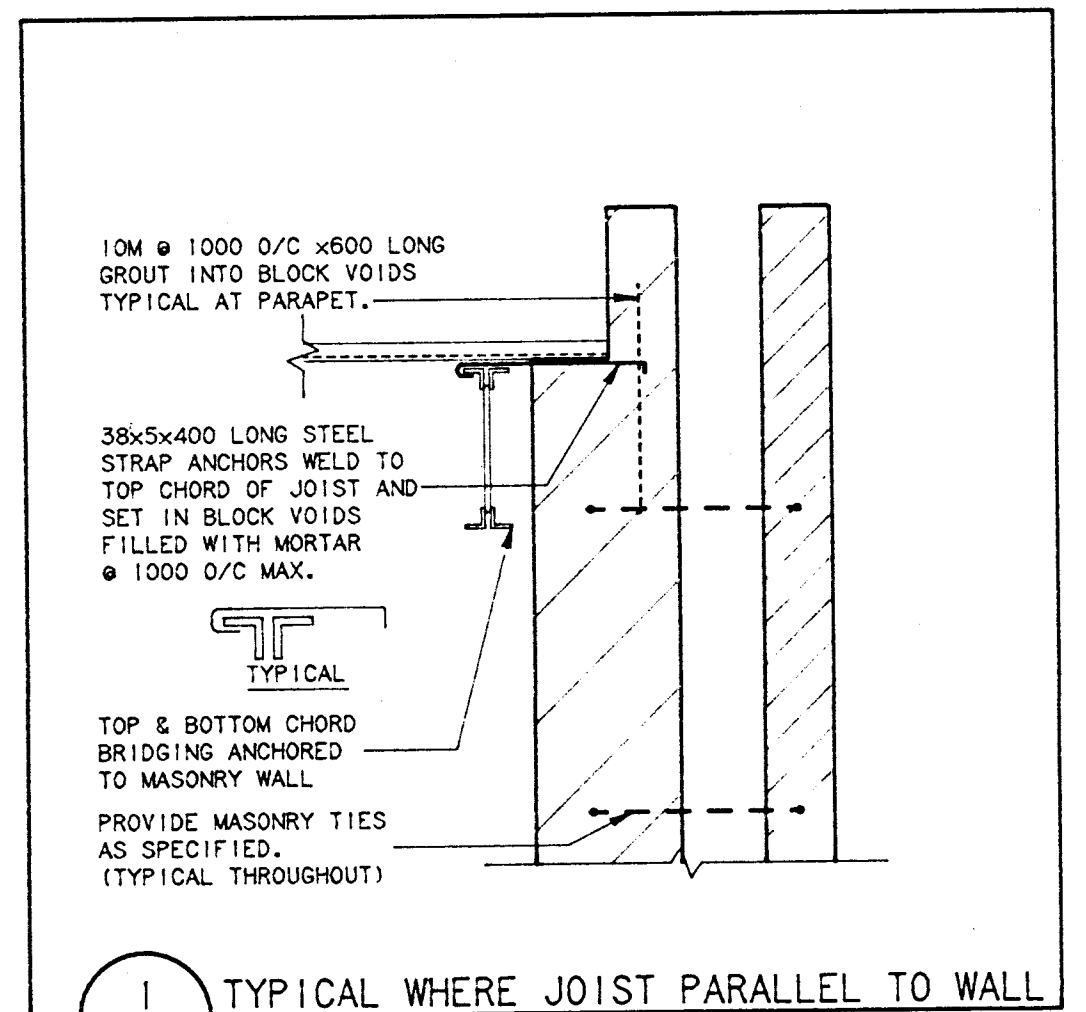
**MECHANICAL & ELECTRICAL REQUIREMENTS**  
 AT OPENINGS IN STEEL ROOF DECK REINFORCE EDGES OF OPENINGS WITH ONE ANGLE 75 X 75 X 8 TYPICAL THROUGHOUT EXCEPT AS OTHERWISE NOTED. REFER TO MECHANICAL, ELECTRICAL & ARCHITECTURAL DRAWINGS FOR NUMBER, LOCATION AND SIZE OF OPENINGS.  
 REFER TO OTHER CONSULTANTS DRAWINGS AND SPECIFICATIONS FOR WEIGHTS AND LOCATIONS OF SUPPORTED OR SUSPENDED MECHANICAL UNITS. SHOW LOCATIONS AND WEIGHTS OF UNITS ON THE STEEL SHOP DRAWINGS FOR APPROVAL BY ELECTRICAL AND MECHANICAL CONSULTANTS BEFORE FABRICATION IS STARTED.  
 REFER TO MECHANICAL AND ELECTRICAL DRAWINGS FOR LOCATIONS OF EQUIPMENT HOUSEKEEPING CONCRETE PADS.

**ROOF FRAMING NOTES**  
 1. TOP OF STEEL IS 40mm BELOW TOP OF ROUGH ROOF EXCEPT AS CROSSED & NOTED.  
 2. FOR ROOF ELEVATIONS & SLOPES SEE ARCHITECTURAL DRAWINGS.  
 3. LIVE LOAD IS 1.72 kN/m<sup>2</sup> PLUS SNOW BUILD-UP AS NOTED ON PLAN.  
 4. \*W\* FOR STEEL DECK IS TOTAL LOAD (LL + DL) IN kN/m<sup>2</sup>. ADD SNOW BUILD-UP WHERE SHOWN ON PLAN.  
 5. \*\*W\* FOR OWSJ IS TOTAL LOAD (LL + DL) IN kN/m. ADD SNOW BUILD-UP & POINT LOADS WHERE SHOWN ON PLAN.  
 6. SEE ALSO TYPICAL DETAILS IN SPECIFICATIONS AND GENERAL NOTES ON DRAWING S3.  
 7. UNLESS SPECIFICALLY NOTED OTHERWISE PROVIDE BE 150 X 10 X 150 AT EVERY BEAM BEARING.  
 8. AT OPENING IN ROOF DECK, REINFORCE EDGES OF OPENING WITH 75 X 75 X 8 L TYPICAL THROUGHOUT EXCEPT AS OTHERWISE NOTED.  
 9. WP1 - CONT WALL PLATE 75 X 6 WITH 100 X 200 LONG WELDED ANCHORS AT 900 OC, ANCHORS EMBEDDED IN BLOCK VOIDS FILLED WITH 20MPa CONC. TYPICAL WHEREVER SHOWN OR NOTED.

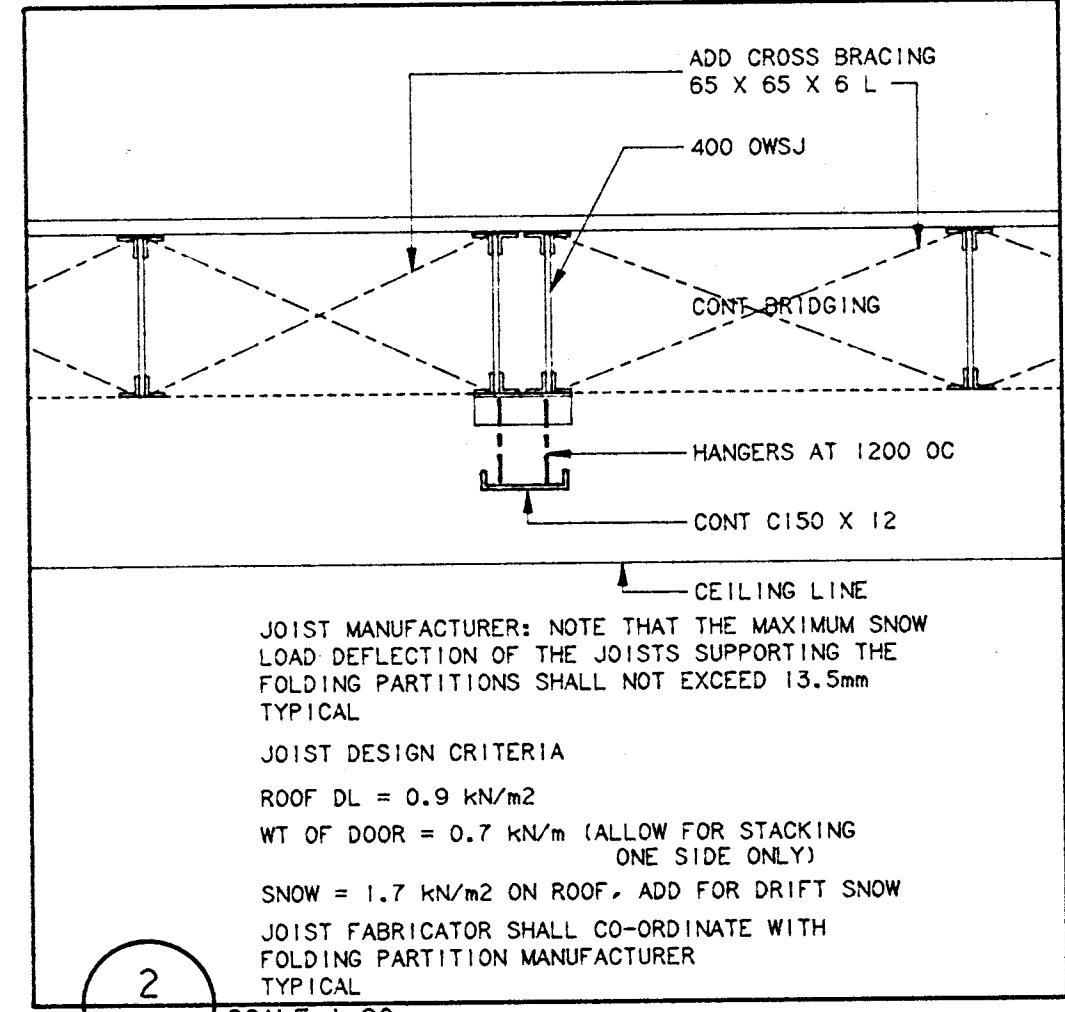
**SECOND FLOOR FRAMING NOTES**  
 1. TOP OF PC SLAB IS 50mm BELOW FIN SECOND FLOOR EXCEPT AS CROSSED & NOTED.  
 2. TOP OF STEEL BEAMS IS 250mm BELOW FIN SECOND FLOOR UNLESS OTHERWISE SHOWN OR NOTED.  
 3. LIVE LOAD IS 2.4 kN/m<sup>2</sup>.  
 4. SEE ALSO GENERAL NOTES ON DRAWING S3 AND TYPICAL DETAILS IN THE SPECIFICATIONS.



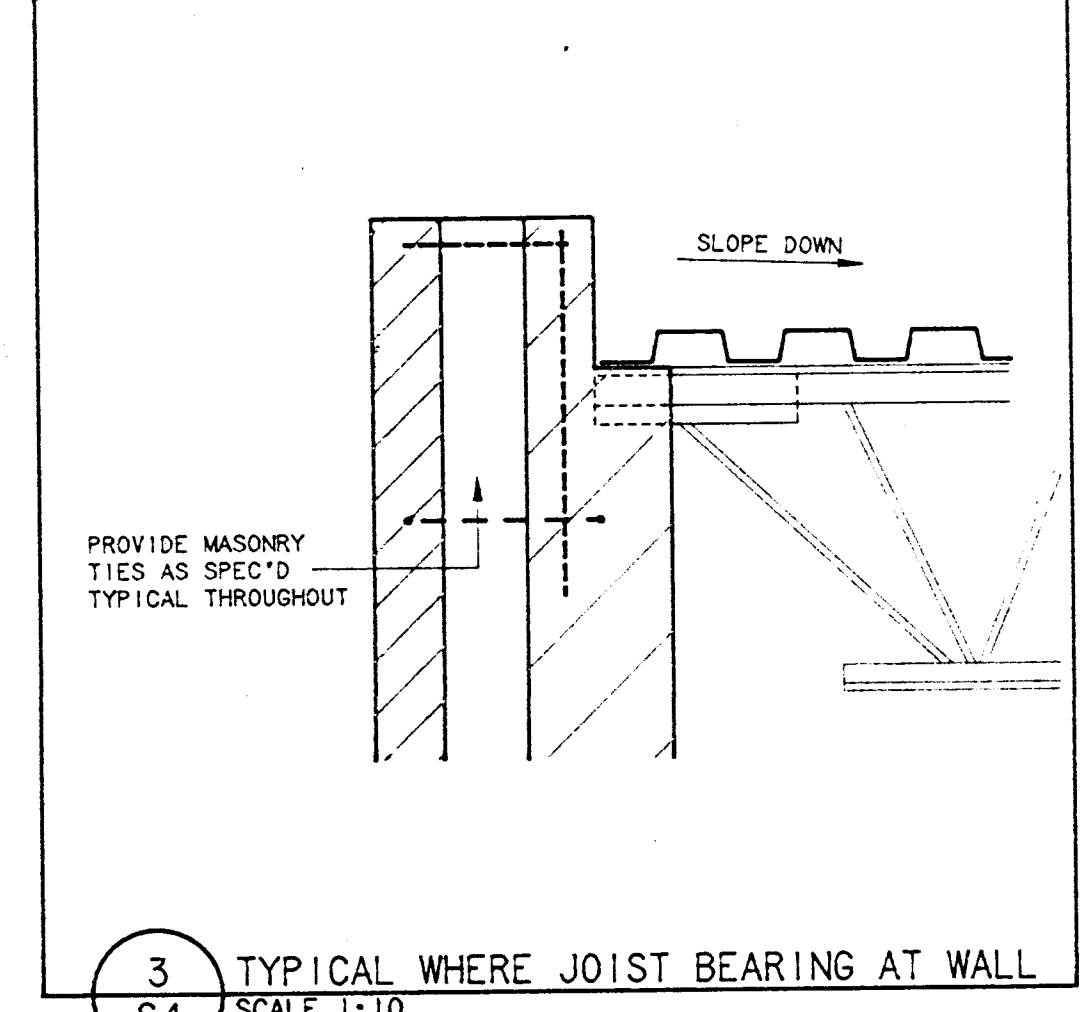




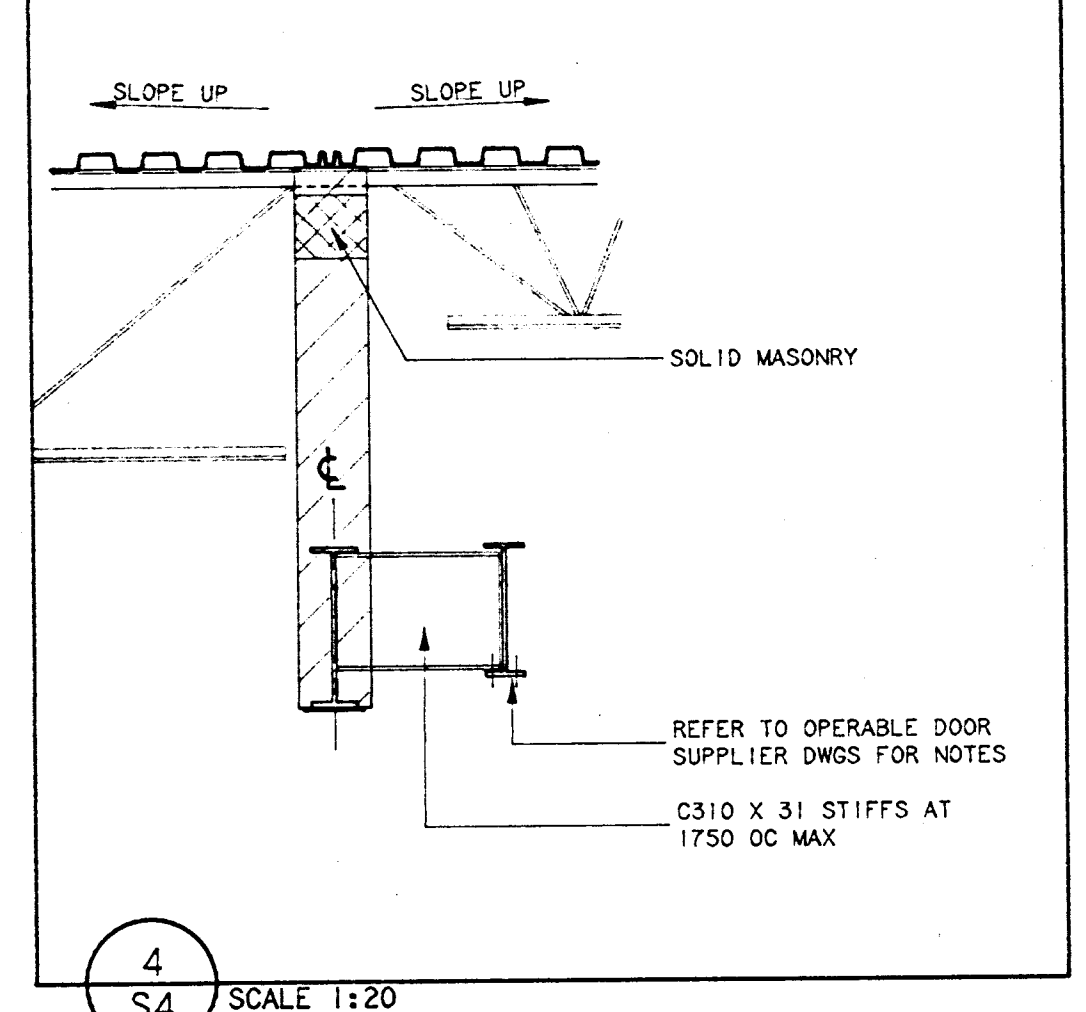
1 TYPICAL WHERE JOIST PARALLEL TO WALL  
S4 SCALE 1:10



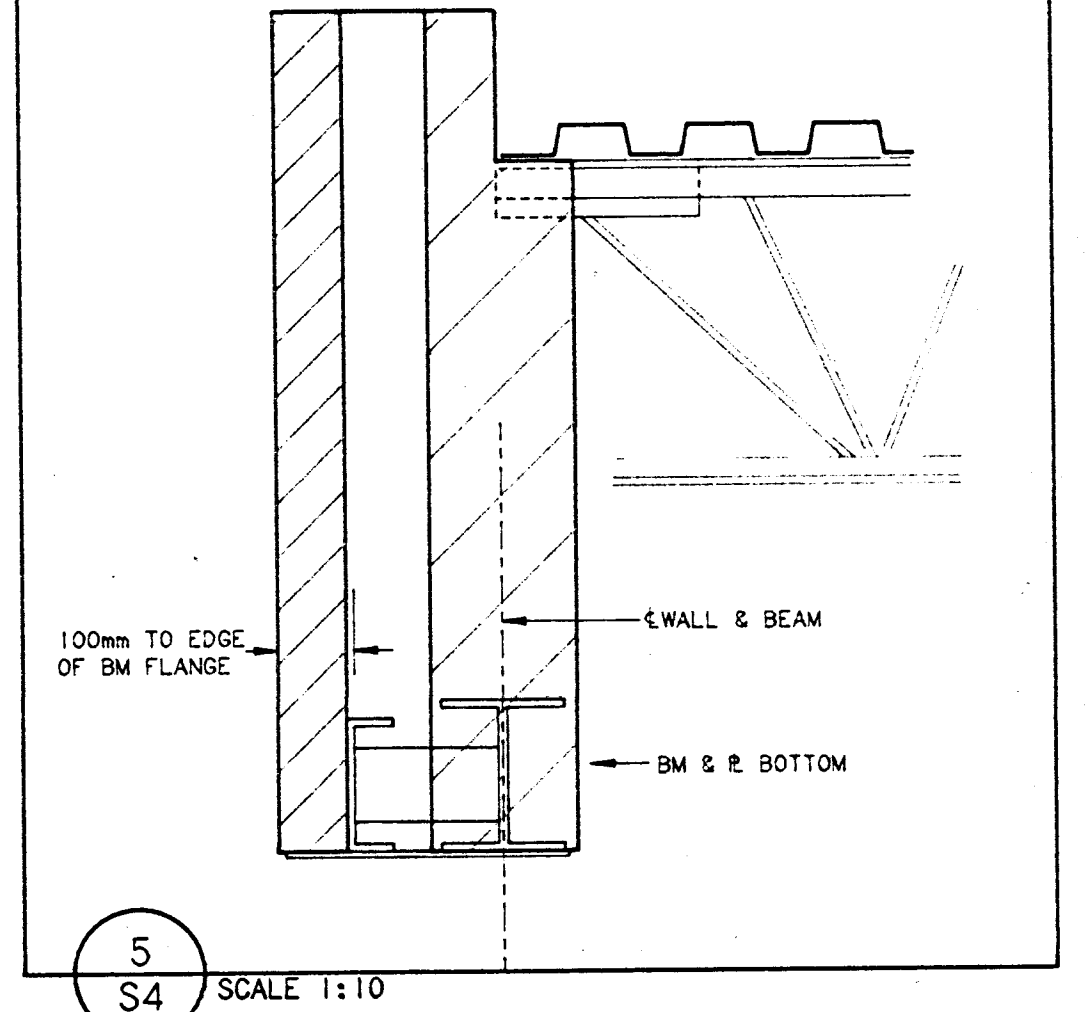
2 TYPICAL WHERE JOIST BEARING AT WALL  
S4 SCALE 1:20



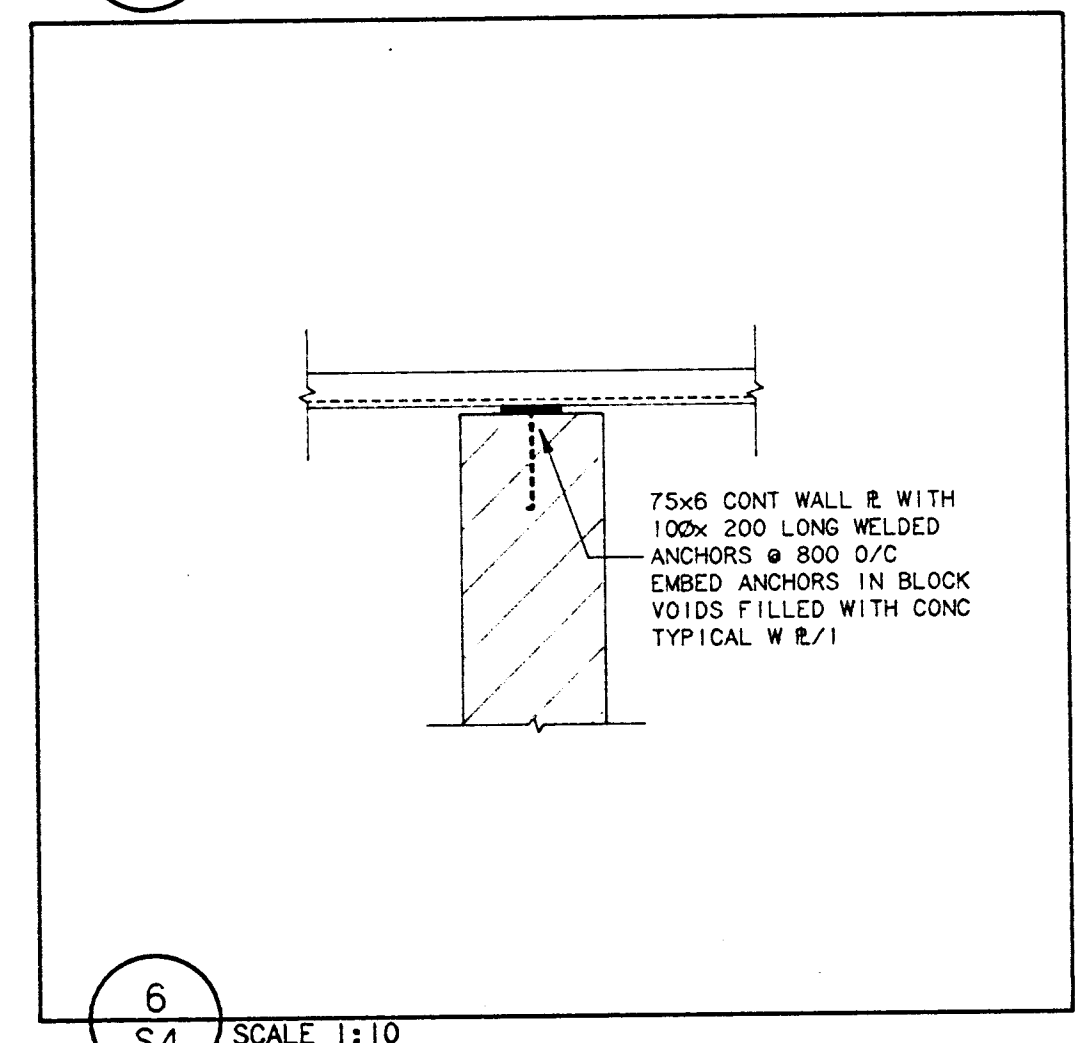
3 TYPICAL WHERE JOIST BEARING AT WALL  
S4 SCALE 1:10



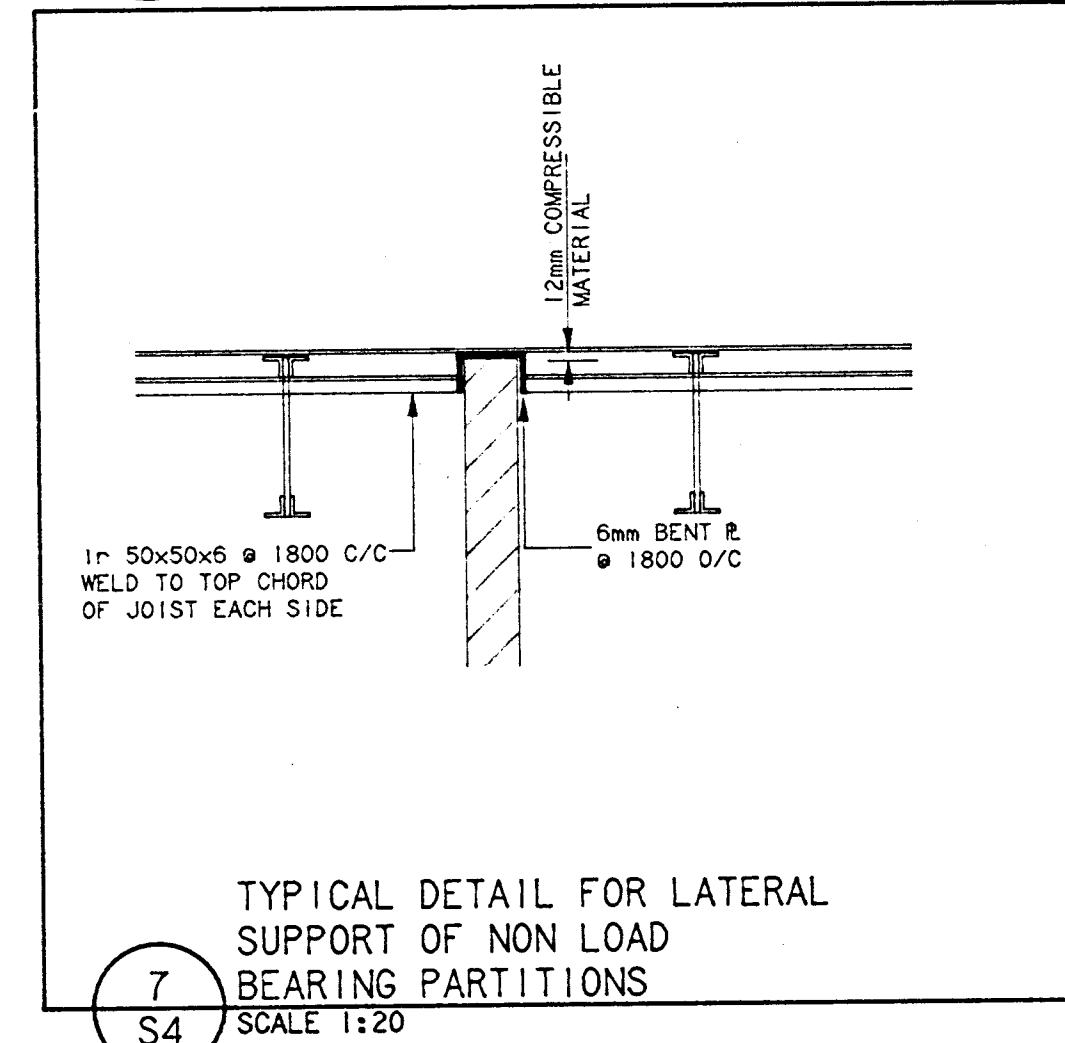
4 TYPICAL FOR LINTEL L6  
S4 SCALE 1:20



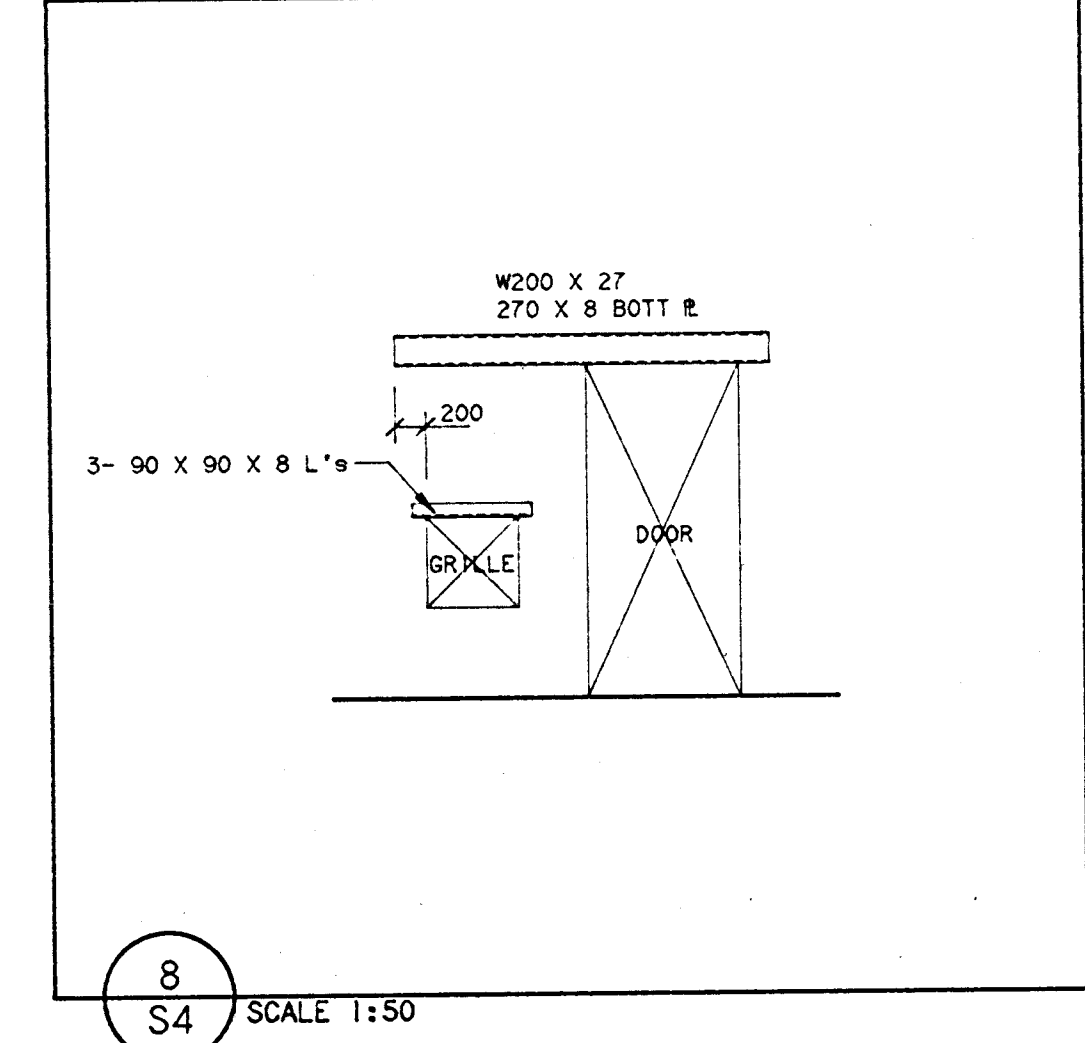
5 LINTEL L7  
S4 SCALE 1:10



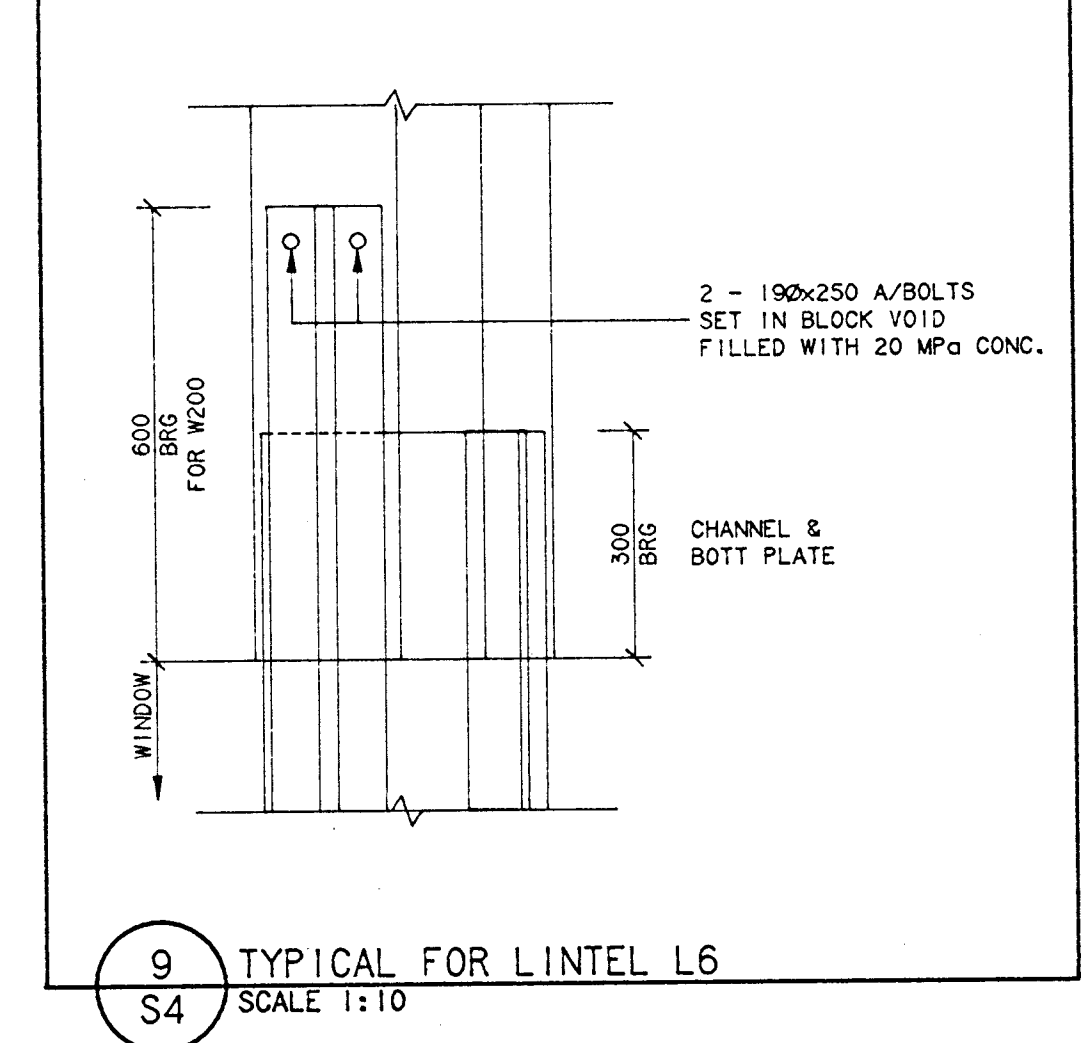
6 TYPICAL DETAIL FOR LATERAL SUPPORT OF NON LOAD BEARING PARTITIONS  
S4 SCALE 1:10



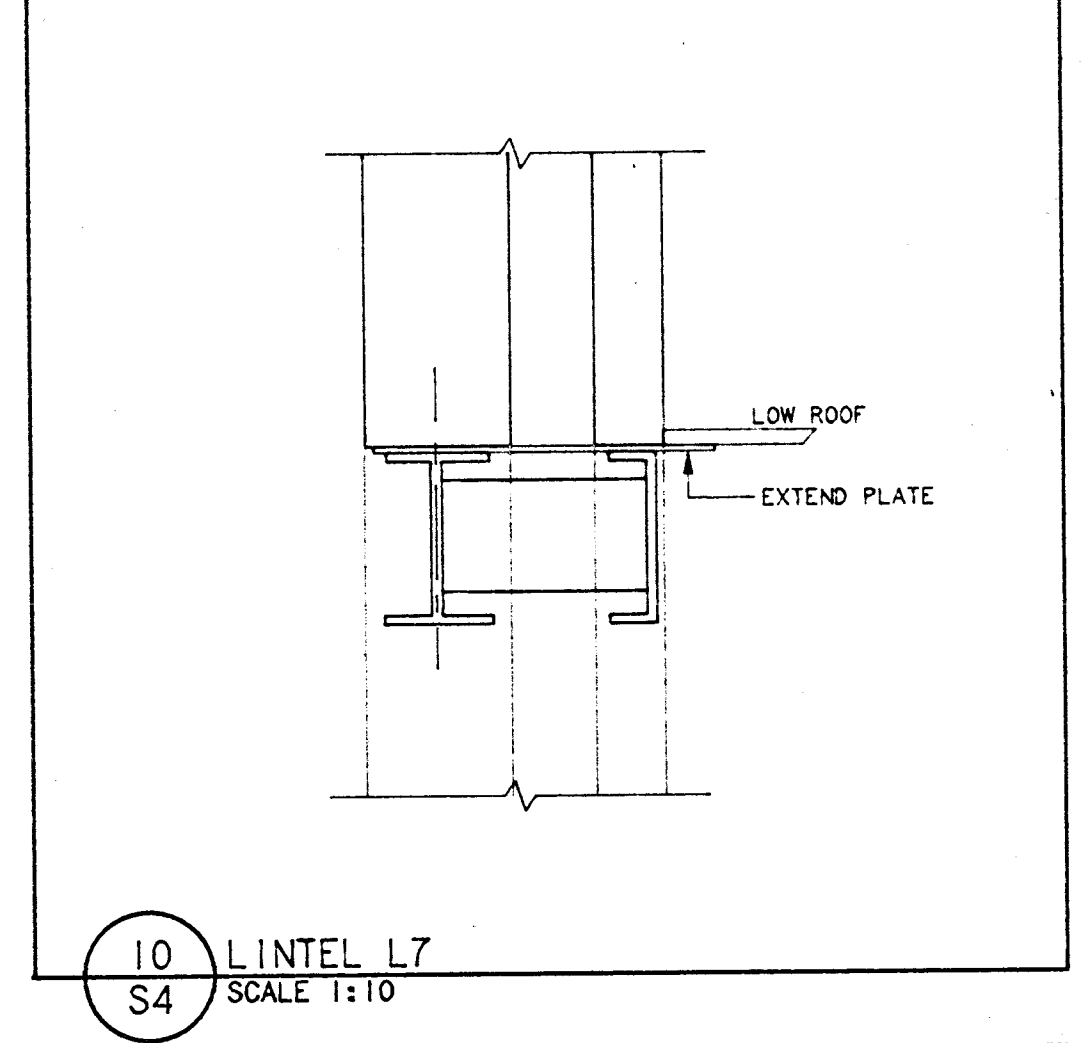
7 TYPICAL DETAIL FOR LATERAL SUPPORT OF NON LOAD BEARING PARTITIONS  
S4 SCALE 1:20



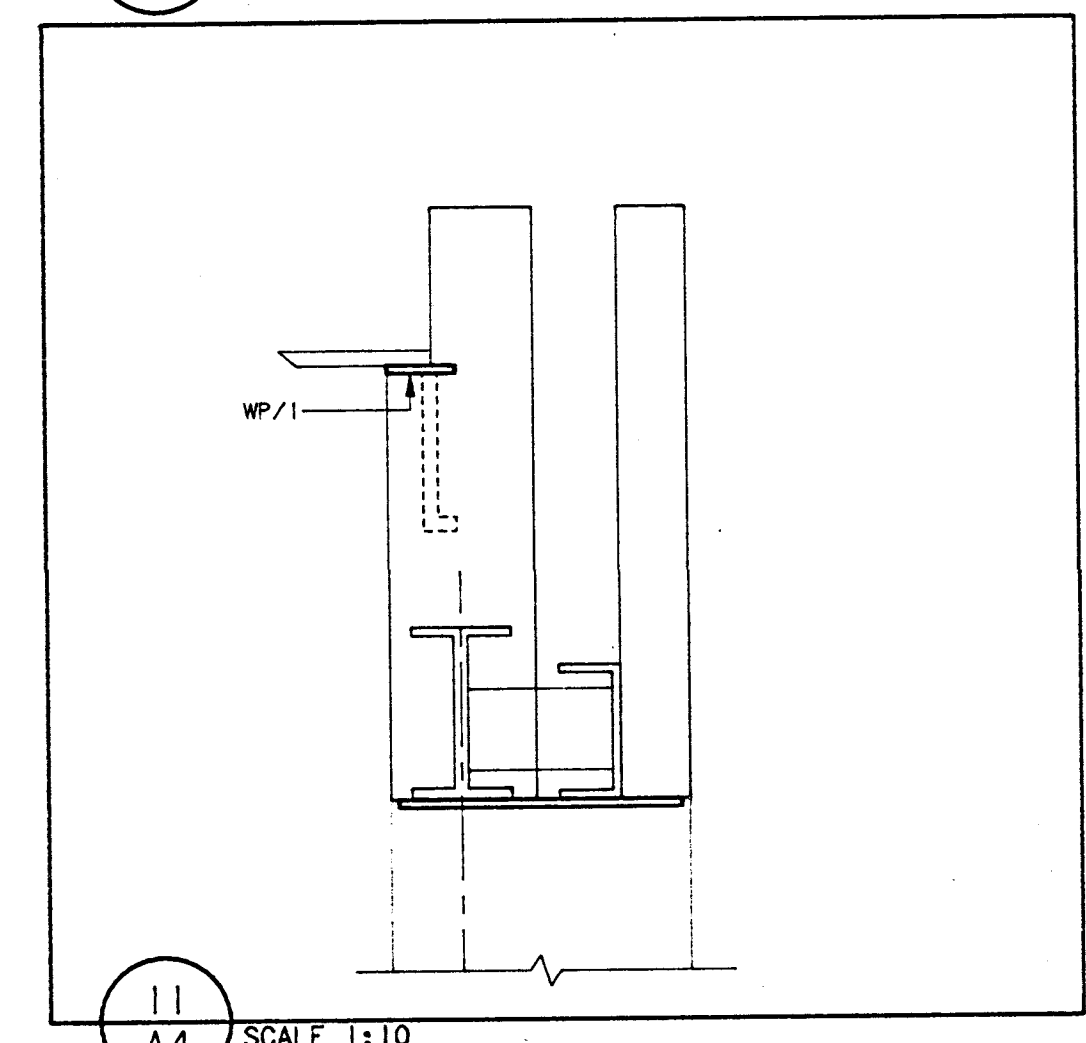
8 TYPICAL FOR LINTEL L6  
S4 SCALE 1:50



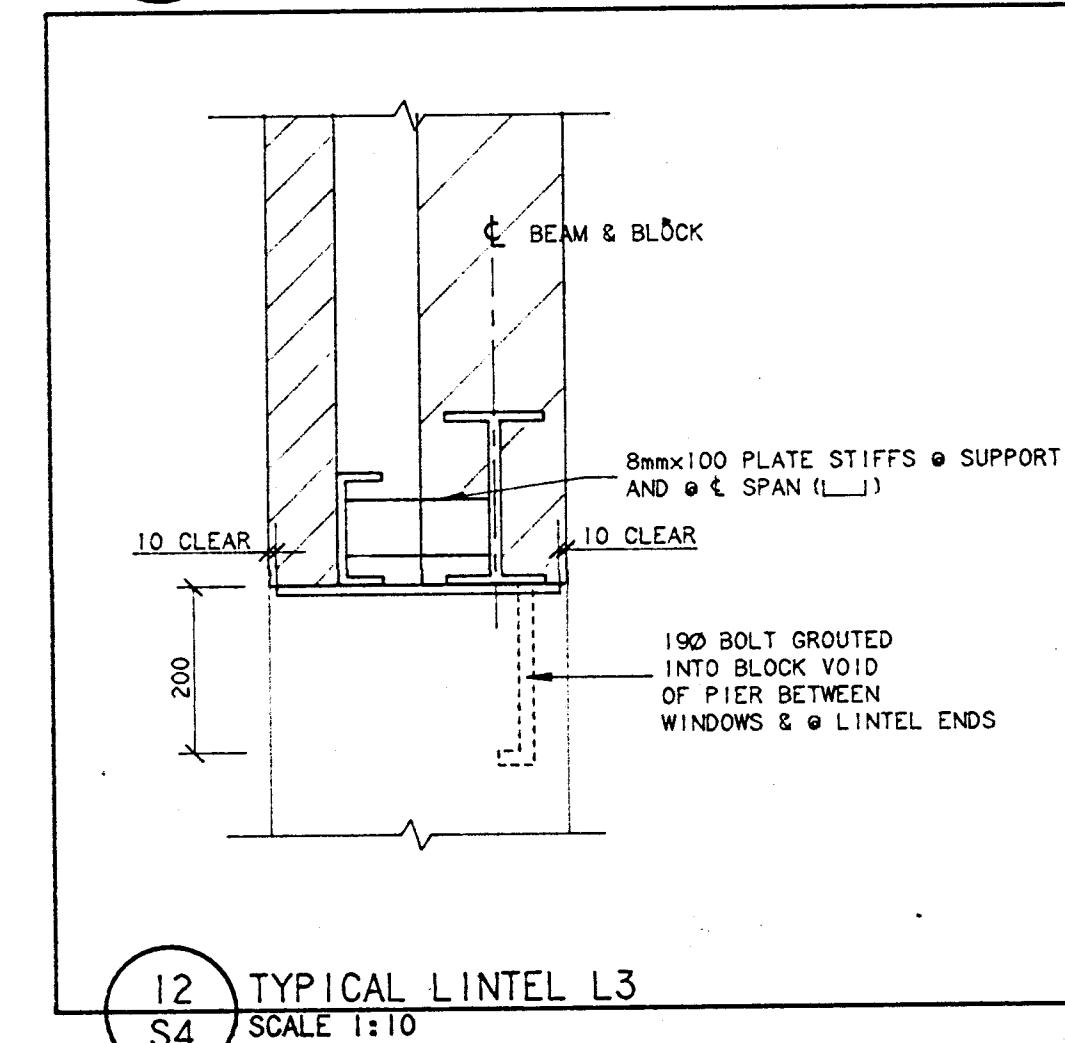
9 TYPICAL FOR LINTEL L6  
S4 SCALE 1:10



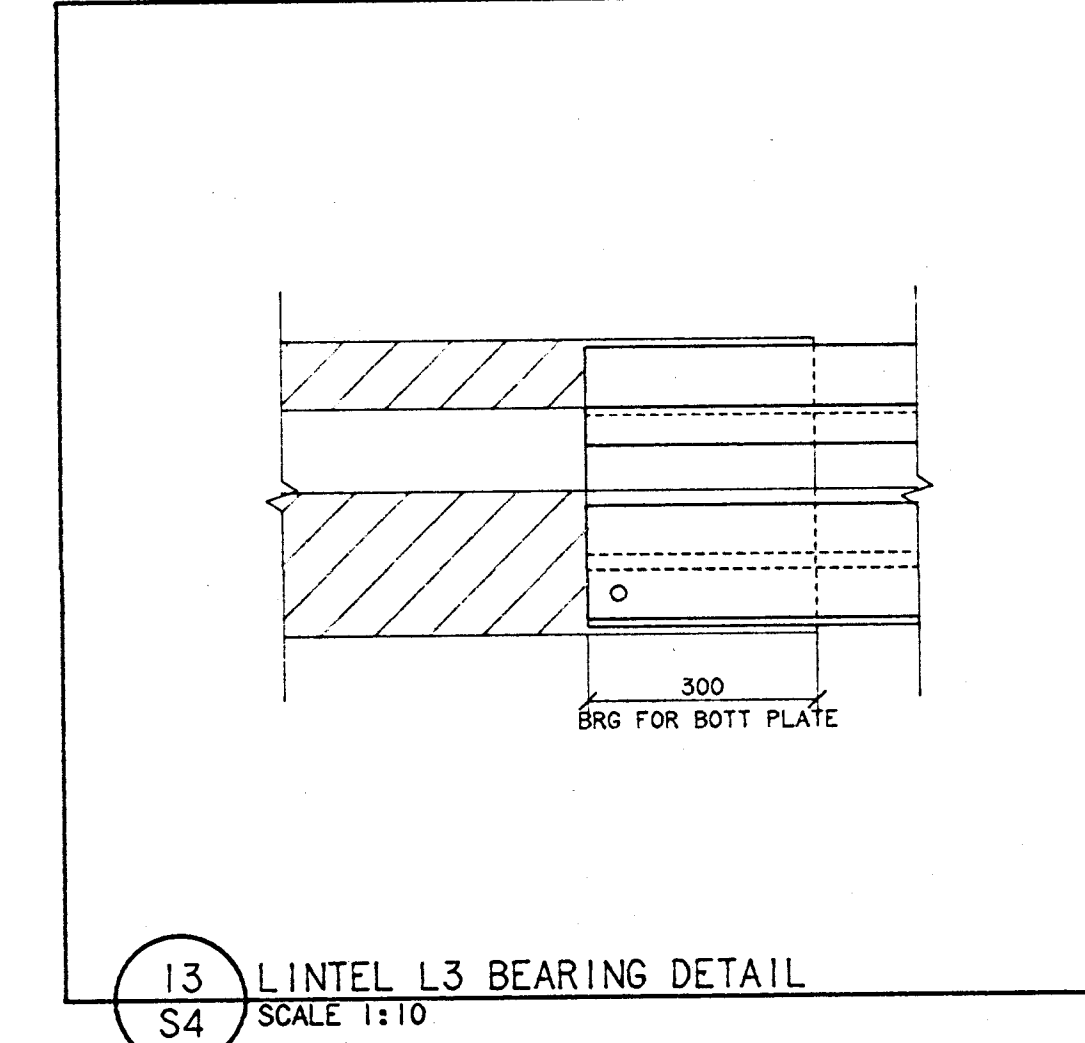
10 LINTEL L7  
S4 SCALE 1:10



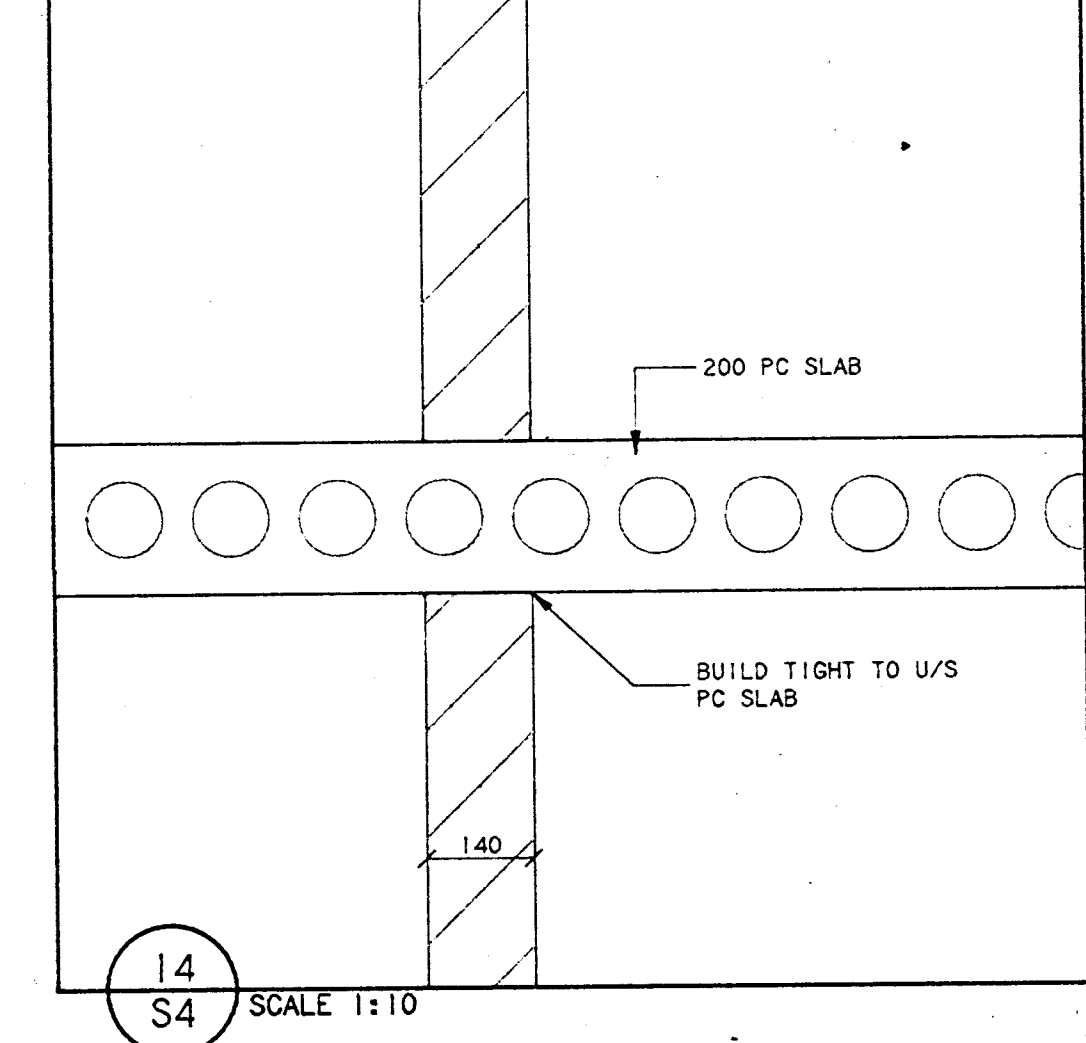
11 TYPICAL LINTEL L3  
S4 SCALE 1:10



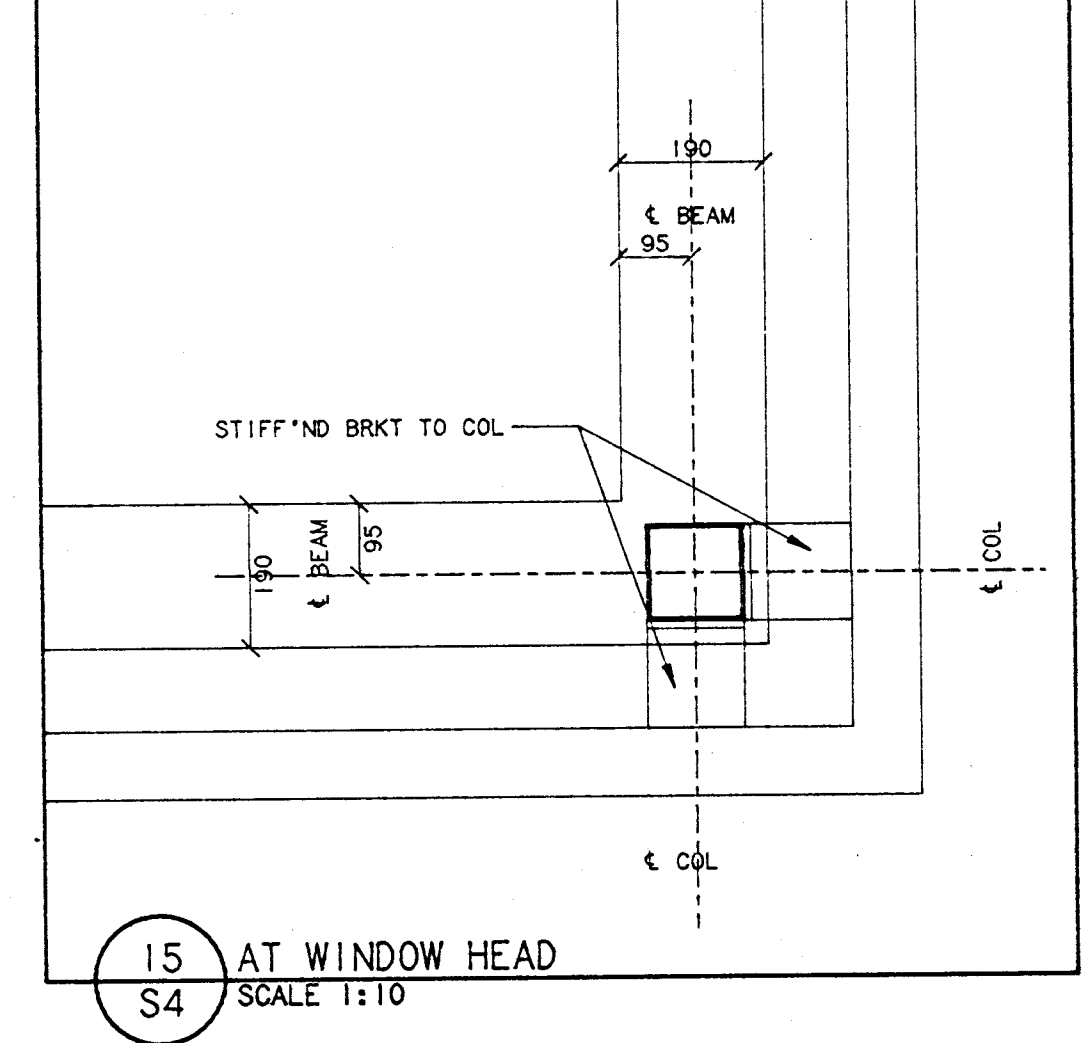
12 TYPICAL LINTEL L3  
S4 SCALE 1:10



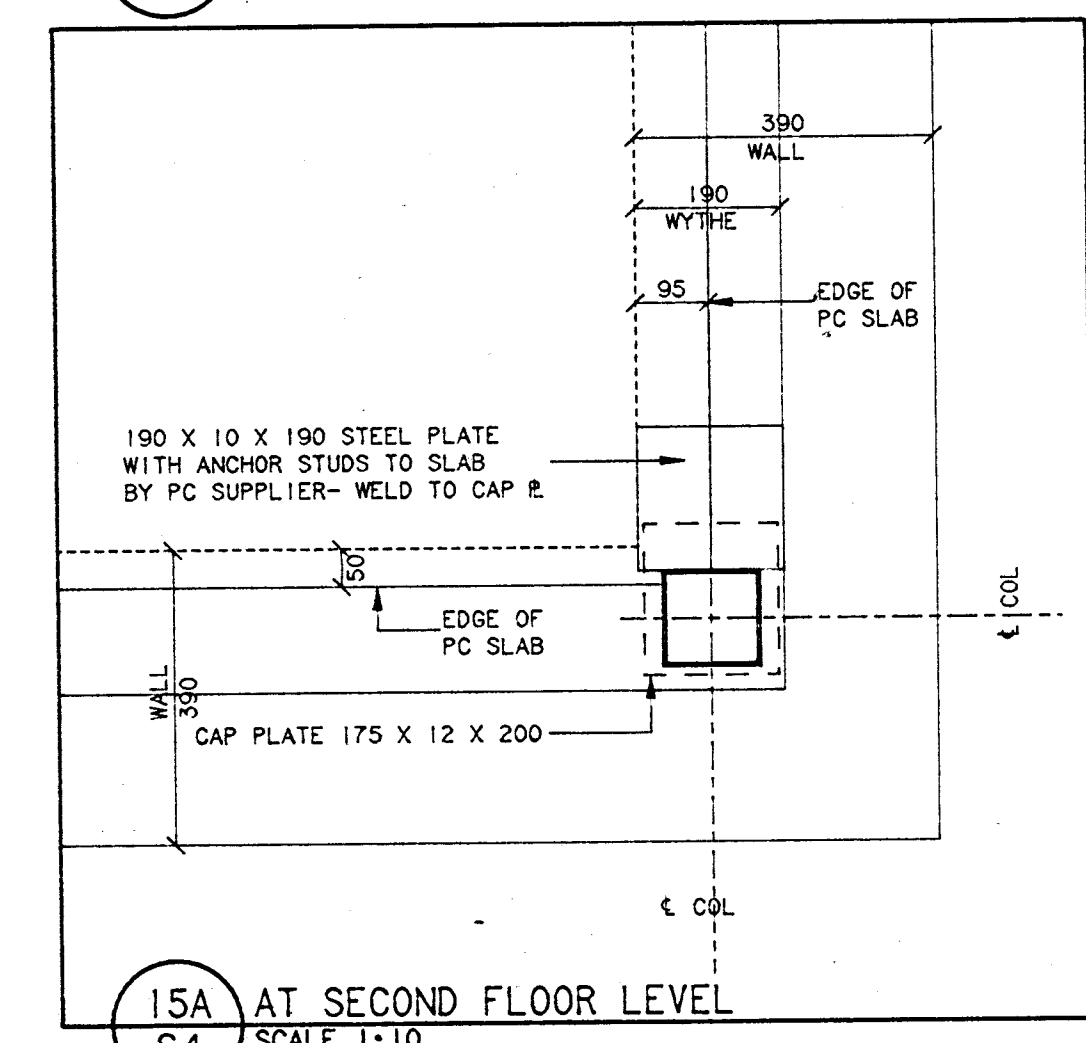
13 LINTEL L3 BEARING DETAIL  
S4 SCALE 1:10



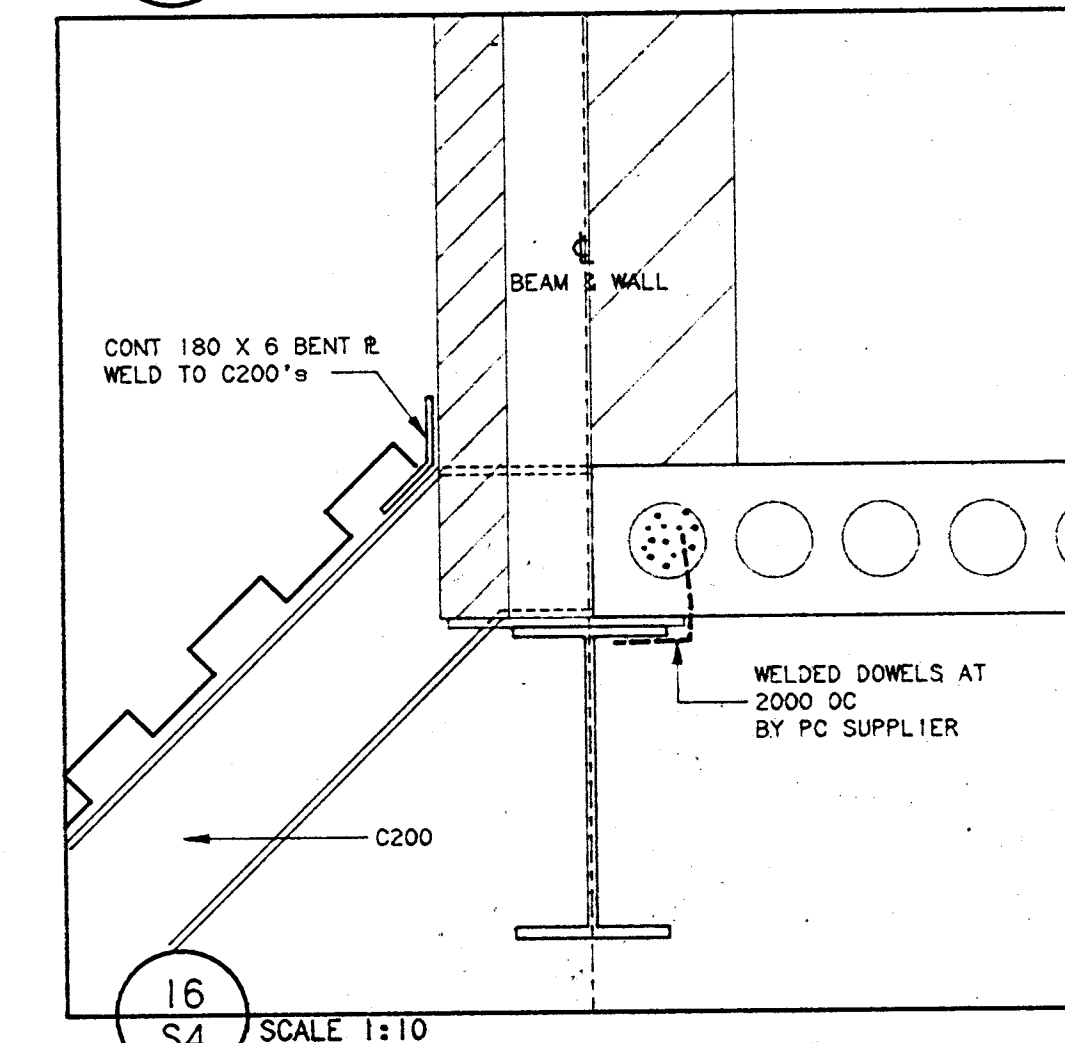
14 TYPICAL LINTEL L3  
S4 SCALE 1:10



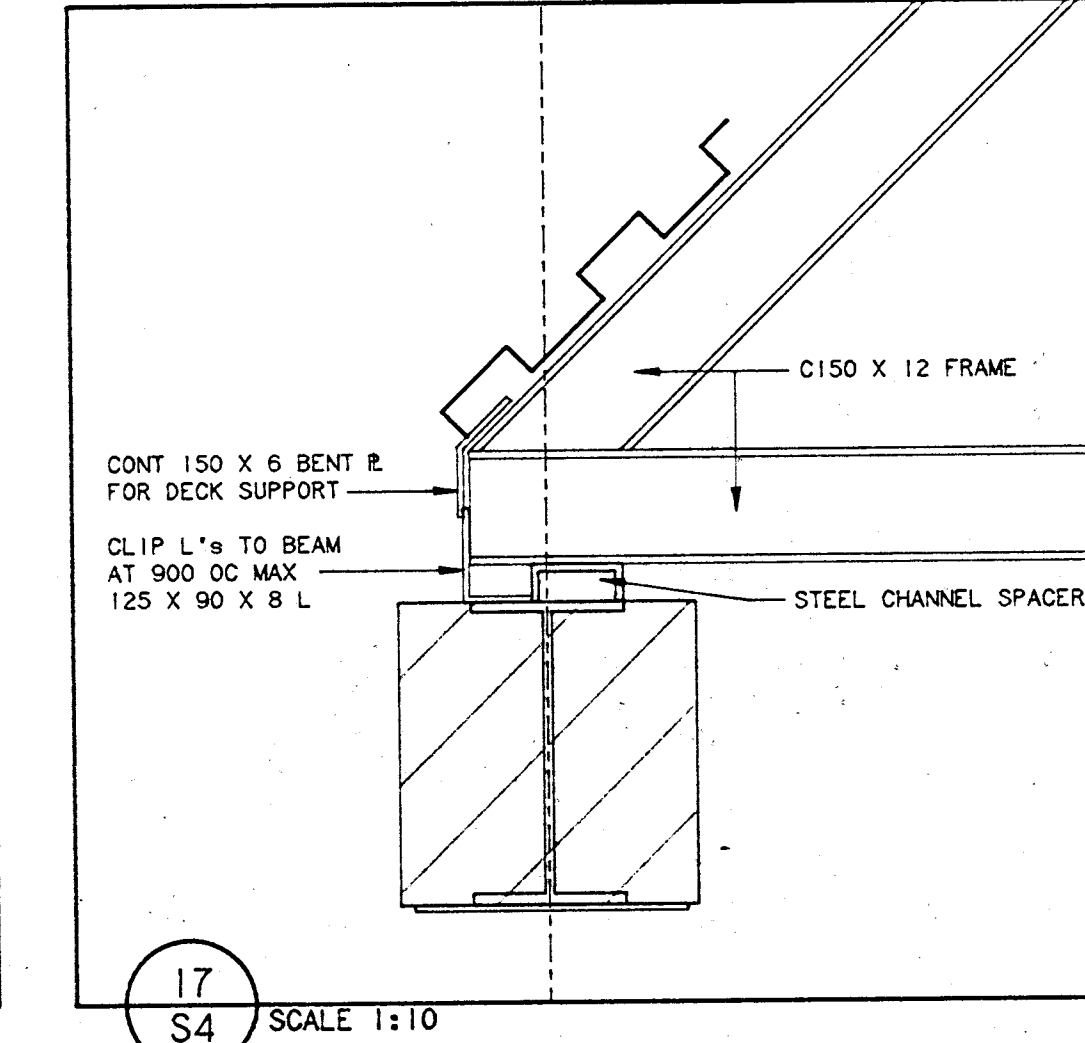
15 AT WINDOW HEAD  
S4 SCALE 1:10



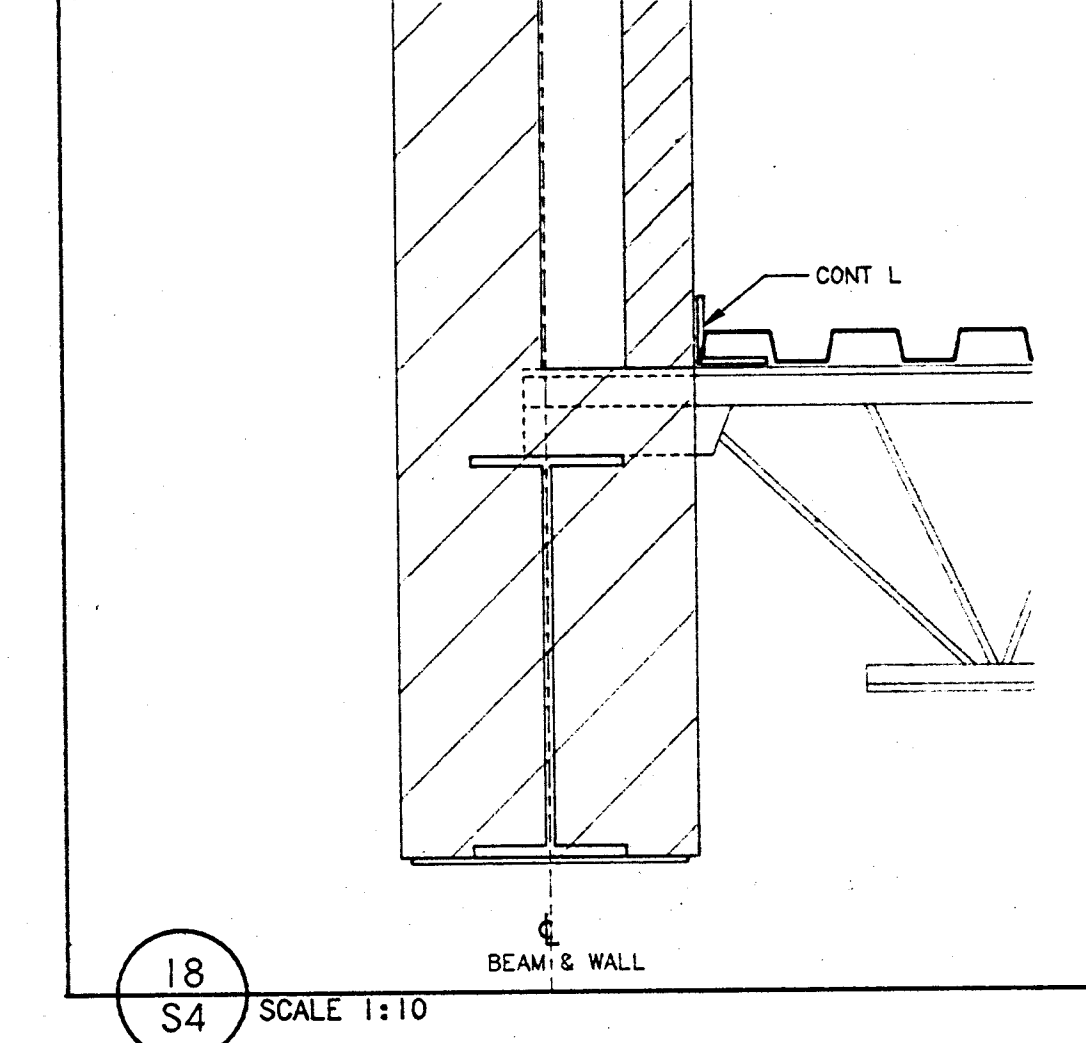
15A AT SECOND FLOOR LEVEL  
S4 SCALE 1:10



16 TYPICAL LINTEL L3  
S4 SCALE 1:10



17 TYPICAL LINTEL L3  
S4 SCALE 1:10



18 TYPICAL LINTEL L3  
S4 SCALE 1:10

**E.H. GOSLING ENGINEERS**  
CONSULTING ENGINEERS  
207 ELLESMERE ROAD  
SCARBOROUGH, ONTARIO  
M1R 4E2 TEL. 449-4600

ALL DIMENSIONS TO BE CHECKED AND VERIFIED ON THE JOB. ANY DISCREPANCIES TO BE REPORTED TO THE CONSULTANT. ALL DRAWINGS REMAIN THE PROPERTY OF THE CONSULTANT. LATEST APPROVED DRAWINGS ONLY TO BE USED FOR CONSTRUCTION.

REVISIONS	
No.	DATE

**SECTIONS & DETAILS**

**UNNAMED BODDY SCHOOL**  
GLENANNA ROAD  
PICKERING, ONTARIO  
DURHAM BOARD OF EDUCATION

DATE AUGUST 27 1986	JOB No.	SHEET No.
DRAWN BY JF	8618	S4
SCALE AS NOTED		

For Reference only. These drawings are based on information provided by others and have not been field-verified by the Architect. Contractor shall verify all existing dimensions and conditions on-site prior to commencement of work.