



Addendum #1

Q26-03 - Stair Lift Replacement at Eastdale C.V.I.

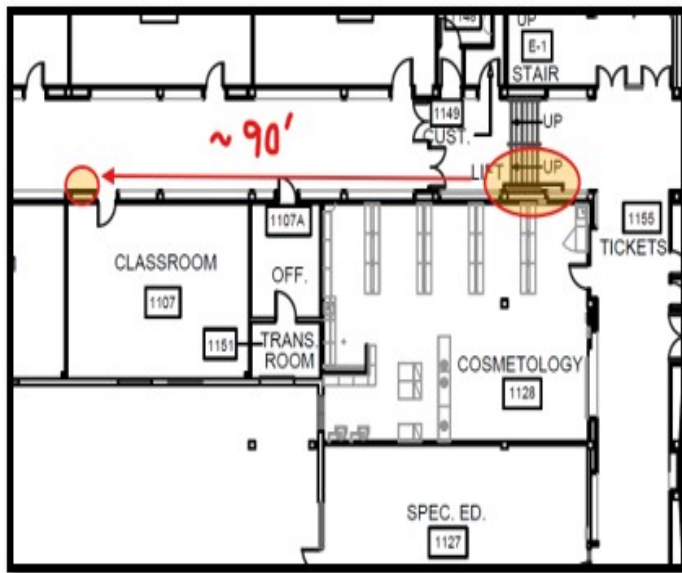
Closing Date: Tuesday, February 17, 2026, before 3:00 PM

1. Clarification of Electrical Scope – New Power Feed Requirements:

The following requirements are hereby added to the Section 1.7.5 of the technical specifications:

- **New Power Feed Construction:** The Trade Contractor/General Contractor is responsible for the supply and installation of a completely new electrical feed from the nearest available electrical panel with spare capacity.
- **Distance and Routing:** The new run is approximately **90 feet** from the lift location to the designated panel.
- **Conduit Requirements:** New **plenum-rated conduit** must be used for the entire run to the new panel.
- **Panel Identification:** The closest panel with available spares is located in the corridor adjacent to **Classroom 107** (Refer to Site Photos).
- **Isolation of Existing Wiring:** All existing, abandoned wiring for the old lift found in the ceiling space must be isolated to facilitate safe removal.

Approximately Location of Panel



Panel Photos

