

SPECIFICATION NOTES:

DRAWINGS ARE PERFORMANCE IN INTENT AND DIAGRAMMATIC IN NATURE.

PROVIDE ALL PRODUCTS AND LABOUR TO PERFORM COMPLETELY THE WORK AS SHOWN OR REQUIRED TO MEET THE DESIGN INTENT, AT NO EXTRA COST.

PERFORM ALL WORK IN CONFORMANCE TO BUILDING CODE, ELECTRICAL SAFETY CODE, LOCAL ELECTRICAL INSPECTOR'S REQUIREMENTS AND ALL MUNICIPAL BY-LAWS.

DO NOT REDUCE STANDARDS SET BY THESE DRAWINGS BY APPLYING CODES.

EXAMINE SITE FOR CONDITIONS AFFECTING WORK. NO EXTRA COST SHALL BE ALLOWED FOR CONSIDERATIONS OVERLOOKED.

APPLY FOR ALL PERMITS, SERVICES AND INSPECTIONS AND PAY ALL RELATED FEES.

SUBMIT SHOP DRAWINGS TO CONSULTANT FOR ALL ELECTRICAL EQUIPMENT FOR REVIEW AND COMMENTS.

CARRY OUT WORK IN CONFORMANCE TO BASE BUILDING STANDARDS.

MAKE ANY ADJUSTMENTS, REROUTINGS OR RELOCATIONS TO EXISTING ELECTRICAL PRODUCTS AS REQUIRED. PROVIDE SUCH ADJUSTMENTS AT NOT EXTRA COST.

BECOME FULLY FAMILIAR WITH EXISTING BUILDING SYSTEMS & EQUIPMENT OPERATIONS. PROVIDE ALL REQUIRED PRODUCTS TO MAKE NEW WORK FULLY OPERATIONAL TO MEET DESIGN INTENT.

INCLUDE IN QUOTED PRICE FOR ALL ALTERATIONS TO EXISTING BUILDING SYSTEMS AND ANY INSTALLED PRODUCTS AFFECTED IN INTERFACING NEW WORK.

MAINTAIN ALL BUILDING SERVICE IN OPERATION. PROVIDE ALL TEMPORARY WIRING AND CONNECTIONS. SHUTDOWN SERVICES ONLY AS AUTHORIZED IN WRITING.

INCLUDE IN QUOTED PRICE FOR PREMIUM TIME WORK REQUIRED.

COORDINATE WORK WITH ALL OTHER TRADES PRIOR TO INSTALLATION. NOTIFY CONSULTANT OF ANY DISCREPANCIES.

TEST NEW AND EXISTING INTERFACED SYSTEMS TO ENSURE PROPER OPERATION. CORRECT ALL DEFICIENCIES.

REPAIR ANY SYSTEM DAMAGED DURING EXECUTION OF WORK.

PRODUCTS SHALL BE OF MANUFACTURE SPECIFIED. WHERE MANUFACTURE IS NOT SPECIFIED, PRODUCTS SHALL BE OF HIGH COMMERCIAL QUALITY AND SHALL BE CSA APPROVED FOR THE APPLICATION.

VERIFY LOADING OF EXISTING CIRCUITS TO BE REUSED. DO NOT EXCEED CODE REQUIREMENTS. VERIFY ON SITE EXISTING CIRCUITS USED. SPARE AND SPACES AVAILABLE WHERE EXISTING PANELS ARE TO BE REUSED. PROVIDE ADDITIONAL BREAKERS AND CIRCUITS AS NECESSARY.

ADJUST PANEL SCHEDULES TO REFLECT ANY CHANGES PERFORMED TO THE CIRCUITS.

ALL NEW BREAKERS SHALL BE BOLT-ON TYPE, 'SWD' RATED TO MATCH EXISTING.

ALL NEW DISCONNECT SWITCHES SHALL BE HEAVY DUTY QUICK-MAKE, QUICK BREAK ENCLOSED SAFETY SWITCHES.

PACK AND SEAL ALL PENETRATIONS THROUGH FLOORS AND FIRE RATED WALLS WITH APPROVED MATERIAL TO RETAIN FIRE RATING.

PROVIDE ALL CUTTING AND PATCHING REQUIRED TO EFFECT WORK WITH THE PRIOR APPROVAL AND INSTRUCTION OF THE OWNER'S REPRESENTATIVE.

WIRE NEW POWER OUTLETS IN EMT CONDUIT.

DO ALL REQUIRED WORK RELATED TO LIFE SAFETY SYSTEMS AT NO EXTRA COST. RETAIN THE SYSTEM MANUFACTURER'S FORGES TO PERFORM FINAL CONNECTIONS, MODIFICATIONS AND PROVISION OF NEW INTERFACING DEVICES IN THE SYSTEM PANELS.

ENSURE FULL COMPATIBILITY OF ALL NEW DEVICES WITH EXISTING LIFE SAFETY SYSTEMS.

HAVE SYSTEM MANUFACTURER TEST AND CERTIFY LIFE SAFETY SYSTEMS FOR PROPER OPERATION AT COMPLETION OF WORK. PROVIDE COMPLETE SYSTEM VERIFICATION TO SUIT LOCAL AUTHORITIES.

DO NOT SCALE DRAWINGS. FOR EXACT LOCATIONS REFER TO ARCHITECTURAL DRAWINGS AND VERIFY ON SITE ALL DIMENSIONS PRIOR TO INSTALLING PRODUCTS.

ADJUST LOCATION OF PRODUCTS UP TO 3m (10 FT) IN ANY DIRECTION AS DIRECTED AT NO EXTRA COST, PROVIDED THE CHANGES ARE REQUESTED PRIOR TO INSTALLATION.

INCLUDE FOR ANY ADDITIONAL COSTS INCURRED BY OTHER TRADES RESULT-ING FROM SUBSTITUTING ANY ALTERNATIVE EQUIPMENT.

PROVIDE RECORD DRAWINGS OF THE AS-CONSTRUCTED WORK. OBTAIN AND PAY FOR ONE (1) SET OF MYLAR SEPIAS. SUBMIT SEPIAS AND ONE (1) SET OF PRINTS FOR APPROVAL.

PROVIDE A FULLY ITEMIZED BREAKDOWN OF LABOUR AND MATERIAL FOR EXTRA OR DELETED WORK.

ARRANGE FOR INSPECTION OF WORK BY INSPECTION AUTHORITY. PROVIDE A FINAL UNCONDITIONAL CERTIFICATE OF APPROVAL.

PROVIDE A WRITTEN GUARANTEE FOR ONE (1) YEAR COVERING MATERIAL AND WORKMANSHIP. RECTIFY ANY DEFECTS PROMPTLY.

REFER TO DIVISION 15 DOCUMENTS AND PROVIDE ALL POWER WIRING AND DISCONNECT SWITCHES REQUIRED.

ENSURE RECEPTACLES ARE INSTALLED WHICH MATCH EQUIPMENT PLUG CON-FIGURATION. MAKE CHANGES TO SUIT AT NO EXTRA COST. TEST EACH RECEPTACLE FOR PROPER POLARITY AND GROUND.

SUPPORT ALL NEW CONDUIT INSTALLATION FROM STRUCTURE. SECURE ALL PRODUCTS IN APPROVED MANNER.

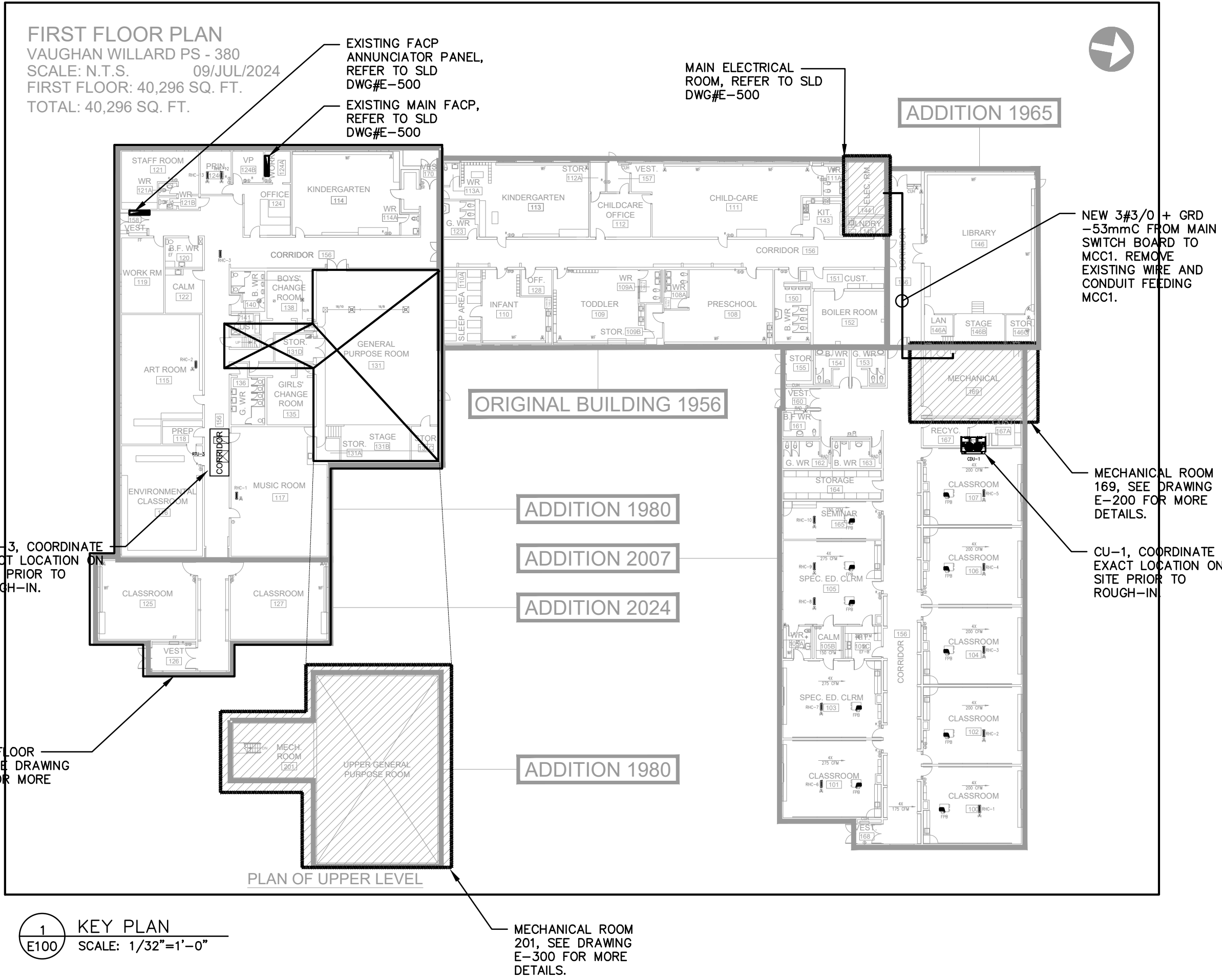
CIRCUIT NUMBERS INDICATED ON DRAWINGS ARE FOR LOAD GROUPING PURPOSES ONLY. BALANCE LOADS ON PANELS TO WITHIN 10% ACROSS PHASES.

PROVIDE ALL WIRING DEVICES AS SPECIFICATION GRADE UNLESS NOTED OTHERWISE.

ALL EQUIPMENT PROVIDED WITH LAMICOID PLATES WITH 7mm (1/4") HIGH ED LETTERS.

PROVIDE ALL WIRING AS COPPER T90 FOR OVERHEAD INSTALLATION AND RWU90 FOR UNDER GROUND INSTALLATION. ALL WIRING SHALL BE DONE IN CONDUIT UNLESS OTHERWISE NOTED. BY CABLE MAY BE USED IN PARTITION WALLS AND CEILING SPACE FOR RUNS NOT EXCEEDING 10 FT. HORIZONTALLY.

MINIMUM WIRE SIZE IS #12 AWG. INCREASE SIZE AS REQUIRED TO LIMIT BRANCH CIRCUIT VOLTAGE DROP TO 3% AND FEEDER VOLTAGE DROPS TO 2% AT FULL LOAD AS PER OESC AND OBC SB-10 REQUIREMENTS. USE SOLID CONDUCTORS FOR SIZES #10 AWG AND SMALLER AND STRANDED CONDUCTORS FOR SIZES # 8 AWG AND LARGER.



- LEGEND OF SYMBOLS
- LIGHT FIXTURES AS DESCRIBED ON DRAWINGS.
  - SELF-CONTAINED COMBINATION 'RUNNING MAN' PICTOGRAM LED EXIT LIGHT C/W EMERGENCY LED HEADS EMERGLITE 'ESC SERIES', SEE FLOOR PLAN.
  - SELF-CONTAINED CEILING OR WALL MOUNTED 'RUNNING MAN' PICTOGRAM LED SERIES EXIT LIGHT. SHADED AREA DENOTES REQUIRED FACE. BEGHELLI 'VE2 COMBORN'.
  - EMERGENCY BATTERY UNIT AS NOTED ON DRAWINGS C/W 7W LED LAMPHEADS, UNLESS NOTED OTHERWISE. BEGHELLI 'NOVA' SERIES C/W 1/2 HOUR WATTAGE CAPACITY AS NOTED ON DRAWINGS. CONTRACTOR MUST NOT EXCEED 5% VOLTAGE DROP.
  - SINGLE OR DOUBLE REMOTE EMERGENCY LED LAMPHEADS WALL MOUNTED C/W 6W LED 12V DC LAMPS, UNLESS NOTED OTHERWISE BEGHELLI 'SR' SERIES.
  - 20A 120V SINGLE POLE LIGHT SWITCH. TOGGLE TYPE SPECIFICATION GRADE, WHITE IN COLOR. PROVIDE SINGLE GANG UTILITY BOX C/W GALVANIZED STEEL COVER PLATE.
  - 20A 120V DUPLEX U-GROUND RECEPTACLE (5-20R) SPECIFICATION GRADE WHITE IN COLOR, C/W GALVANIZED STEEL COVERPLATE. MH 12" AFF UNLESS OTHERWISE NOTED.
  - CONNECTION TO 120V MOTOR OR POWER OUTLET AS INDICATED ON DRAWINGS.
  - 15A 120V CONNECTION TO MOTORIZED DAMPER
  - CONNECTION TO 208V 1 PHASE MOTOR OR POWER OUTLET AS INDICATED ON DRAWINGS.
  - CONNECTION TO 208V 3 PHASE MOTOR OR POWER OUTLET AS INDICATED ON DRAWINGS.
  - DISCONNECT SWITCH SIZE AS INDICATED ON DRAWINGS OR TO SUIT.
  - MOTOR STARTER AS NOTED ON DRAWINGS SUPPLIED, INSTALLED AND WIRED BY THE ELECTRICAL CONTRACTOR.
  - COMBINATION MOTOR STARTER SUPPLIED, INSTALLED AND WIRED BY THIS ELECTRICAL CONTRACTOR.
  - EMERGENCY POWER OFF PUSHBUTTON.
  - JUNCTION BOX, CEILING OR WALL MOUNTED C/W CIRCUIT AS NOTED
  - FIRE ALARM MANUAL PULL STATION.
  - SURFACE WALL MOUNTED FIRE ALARM HORN
  - COMBINATION FIRE ALARM HORN AND STROBE LIGHT.
  - FIRE ALARM HEAT DETECTOR
  - WP DENOTES WEATHER PROOF
  - GFI DENOTES GROUND FAULT INTERRUPTER TYPE.
  - ER DENOTES EXISTING TO BE RELOCATED. EXTEND WIRING, RECONNECT & MAKE GOOD.
  - RL DENOTES RELOCATED POSITION
  - EX DENOTES EXISTING TO REMAIN
  - N DENOTES NEW TO MATCH EXISTING
  - R DENOTES EXISTING TO BE REMOVED.

MAGNETIC COMBINATION STARTERS

INTEGRAL FUSED QUICK-MAKE QUICK-BREAK SWITCHING MECHANISM. (FUSED SIZE AS INDICATED)

INTEGRAL 120V SINGLE PHASE CONTROL TRANSFORMER WITH FUSED SECONDARY SIZED FOR THE CONTROL CIRCUIT REQUIREMENTS & 25% SPARE CAPACITY.

EEMAC 1 ENCLOSURE.

CONTACTOR SOLENOID OPERATED, RAPID ACTION TYPE, EEMAC STANDARD SIZES ONLY.

MOTOR OVERLOAD PROTECTIVE DEVICE IN EACH PHASE, MANUALLY RESET FROM OUTSIDE ENCLOSURE. OVERLOAD HEATERS SHALL MATCH NAMEPLATE CURRENT RATING OF MOTORS FINALLY SELECTED & INSTALLED. TO FULLY PROTECT THE MOTOR FOR ALL STARTING & LOCKED ROTOR CONDITIONS WITH THE ROTOR CONDITIONS WITH THE OVERLOADS REMAINING ACTIVE AT ALL TIMES.

POWER & CONTROL TERMINALS. (SEPARATE TERMINALS FOR EACH REMOTE CONNECTION TO ALLOW FOR TESTING ISOLATION OF INTERLOCK OR DEVICE)

WIRING & SCHEMATIC DIAGRAM INSIDE STARTER ENCLOSURE IN VISIBLE LOCATION. HAND-OFF AUTO & SPEED SELECTOR SWITCHES.

LOW VOLTAGE PILOT LIGHTS.

AUXILIARY CONTACTS. (NORMALLY OPEN & NORMALLY CLOSED)

AUXILIARY & TIME DELAY RELAYS.

MAGNETIC STARTERS

- SIMILAR TO MAGNETIC COMBINATION STARTER NOTED ABOVE EXCEPT WITHOUT INTEGRAL FUSED SWITCH.

MANUAL STARTERS

- POWER SINGLE PHASE MANUAL MOTOR STARTERS OF APPROPRIATE SIZE & TYPE INCLUDING:
  - QUICK MAKE AND BREAK SWITCHING MECHANISM
  - OVERLOAD HEATER WITH MANUAL RESET & TRIP. INDICATION SIZED TO MATCH NAMEPLATE FULL LOAD.
  - AUXILIARY CONTACTS (2-NORMALLY OPEN & 2-NORMALLY CLOSED) FOR REMOTE ON/OFF CONTROL FROM BAS SYSTEM.
  - NEON PILOT LIGHT.

WIRING FOR MECHANICAL EQUIPMENT

'MECHANICAL' SHALL DEFINE THAT EQUIPMENT WHICH IS SERVING AS PART OF THE PLUMBING, DRAINAGE, HEATING, VENTILATION AND AIR CONDITIONING SYSTEMS AS PROVIDED AND/OR INSTALLED BY DIVISION 26.

MOTORS 1/2 HP AND LARGER SHALL BE 3 PHASE. THIS DIVISION SHALL WIRE FOR AND CONNECT MOTORS & THERMOSTATS, ETC., AS SUPPLIED BY DIVISION 15 AND AS SHOWN ON DRAWINGS.

MOTORS UNDER 1/2 HP SHALL BE 120V. THIS DIVISION SHALL WIRE FOR AND CONNECT MOTORS & THERMOSTATS, ETC., AS SUPPLIED BY DIVISION 15 AND AS SHOWN ON DRAWINGS.

ISOLATING SWITCHES FOR ROOF MOUNTED EQUIPMENT SHALL BE WEATHERPROOF TYPE, SUPPLIED AND INSTALLED BY THIS DIVISION.

ALL STARTERS REQUIRED FOR MECHANICAL EQUIPMENT SHALL BE PROVIDED BY ELECTRICAL CONTRACTOR, REFER TO DRAWINGS FOR DETAILS.

ALL FUSED & UNFUSED DISCONNECT SWITCHES SHOWN REQUIRED FOR MECHANICAL EQUIPMENT SHALL BE PROVIDED BY ELECTRICAL CONTRACTOR.

DRAWING LIST

- E-100 - ELECTRICAL LEGEND, SPECIFICATION AND DETAILS
- E-200 - MECH. ROOM 201 DEMO AND NEW WORK - POWER
- E-300 - MECH. ROOM 169 DEMO AND NEW WORK - POWER
- E-400 - GROUND FLOOR LAYOUT - POWER
- E-500 - SLD AND PANEL LOAD SCHEDULES

NO.	DATE	REVISION	BY
1	DEC.24/25	ISSUED FOR TENDER	MA

ELECTRICAL CONSULTANT:

**MJA ENGINEERING LTD.**  
ELECTRICAL ENGINEERS

556 EDWARD AVENUE, UNIT 82  
RICHMOND HILL, ONTARIO  
L4C 9Y5, CANADA  
PHONE: (905) 780-8590 FAX: (905) 780-8591  
EMAIL: [engineering@mjoeng.com](mailto:engineering@mjoeng.com)  
WEB SITE: [www.mjoeng.com](http://www.mjoeng.com)

© COPYRIGHT NOTES:

DISCLAIMER :

- VERIFY ALL DIMENSIONS PRIOR TO CONSTRUCTION.
- DO NOT SCALE DRAWINGS.
- REPORT ALL DISCOVERIES OF ERRORS, OMISSIONS OR DISCREPANCIES TO THE ARCHITECT OR DESIGN ENGINEER AS APPLICABLE.
- USE ONLY LATEST REVISED DRAWINGS OR THOSE THAT ARE MARKED "ISSUED FOR CONSTRUCTION" AND SIGNED BY THE ENGINEER.
- THIS DOCUMENT SHALL REMAIN THE PROPERTY OF MJA ENGINEERING LTD. THE CLIENT SHALL BE PERMITTED TO RETAIN COPIES FOR INFORMATION AND REFERENCE ONLY. THIS DOCUMENT CANNOT BE MODIFIED AND/OR REPRODUCED BY OTHERS WITHOUT WRITTEN CONSENT OF MJA ENGINEERING LTD.

MECHANICAL CONSULTANT:

**RoMar**  
ENGINEERING  
MECHANICAL BUILDING SERVICES

PROJECT/LOCATION

**VAUGHAN WILLARD P.S - AHU REPLACEMENT**

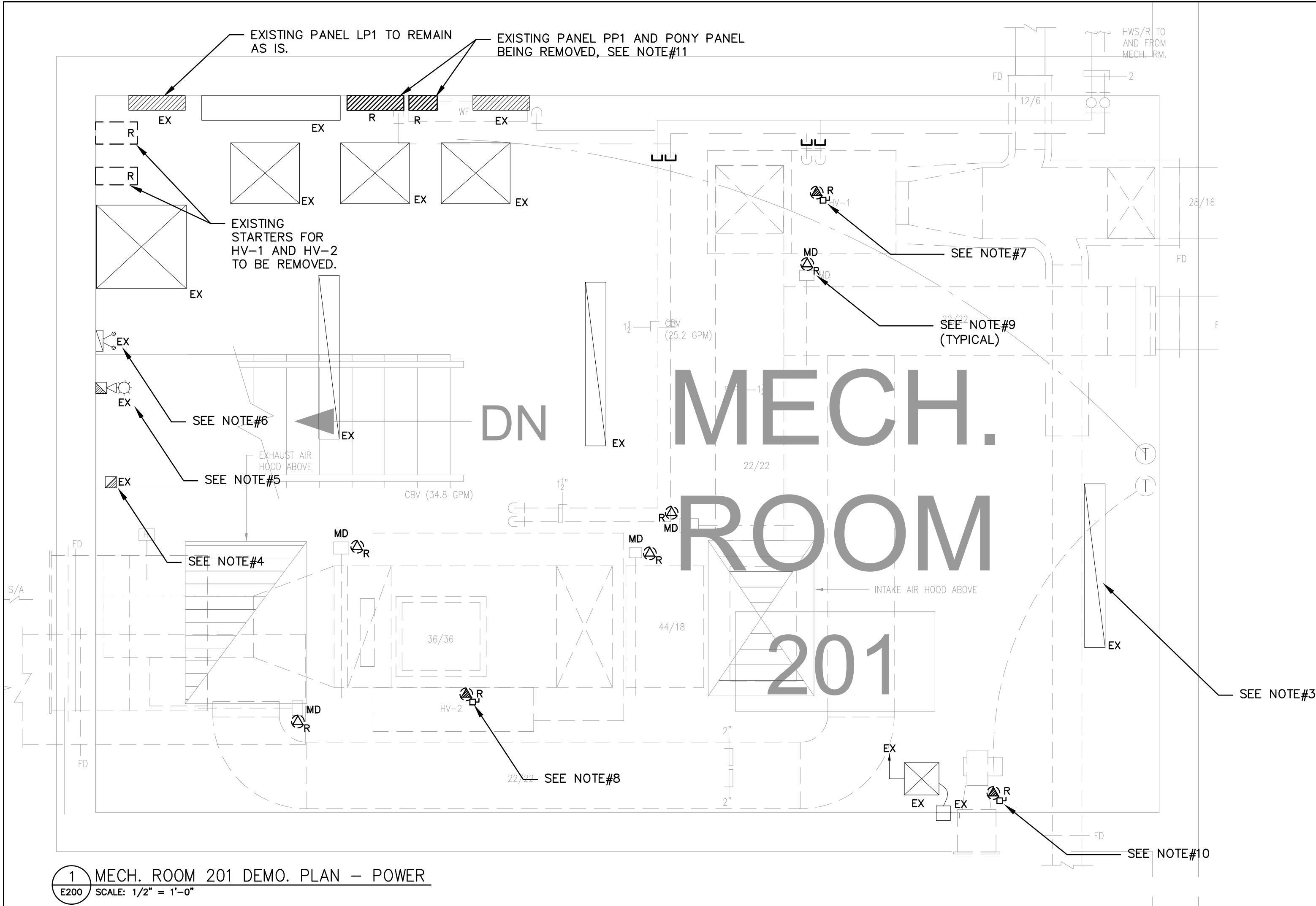
1911 Dixie Rd N, Pickering, ON L1V 1V4

DRAWING NAME

ELECTRICAL LEGEND, SPECIFICATION AND DETAILS

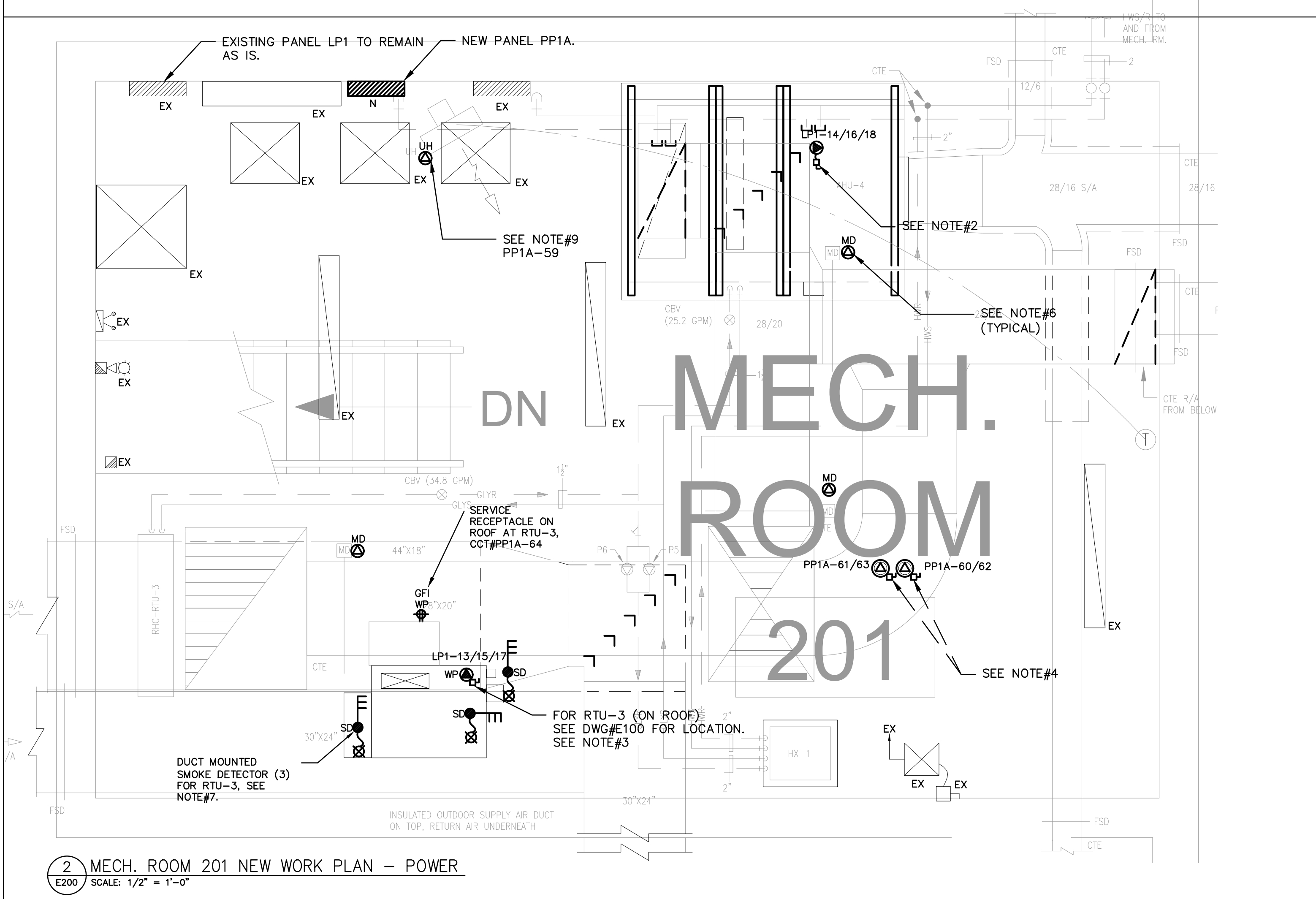
DRAWN	SCALE	DRAWING NO.
M.A	N.T.S.	
CHECKED	DATE	E-100
M.A	DEC. 2025	
PROJECT NO.		2025-189





DEMOLITION NOTES

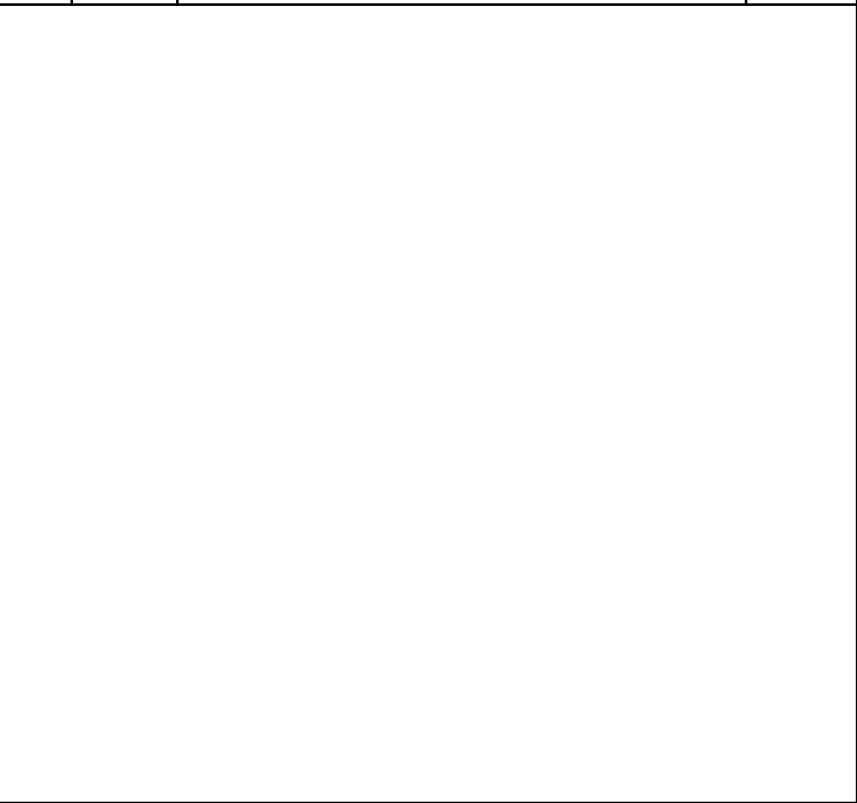
- UNLESS OTHERWISE NOTED ALL ELECTRICAL EQUIPMENT SHOWN SHALL BE REMOVED AND DISPOSED OF OFF SITE IN AN APPROVED MANNER.
- ELECTRICAL CONTRACTOR SHALL ALSO REMOVE ALL ASSOCIATED CONDUIT AND WIRE FOR REMOVED EQUIPMENT UNLESS OTHERWISE NOTED.
- EXISTING LIGHT TO REMAIN.
- EXISTING MANUAL PULL STATION TO REMAIN.
- EXISTING HORN/STROBE TO REMAIN.
- EXISTING EMERGENCY BATTERY TO REMAIN.
- EXISTING 600V CONNECTION TO HV-1 TO BE REMOVED TO FEEDING SOURCE (PANEL LP1) REMOVE ASSOCIATED CONDUIT AND WIRE TO FEEDING SOURCE.
- EXISTING 600V CONNECTION TO HV-2 TO BE REMOVED TO FEEDING SOURCE (PANEL LP1) REMOVE ASSOCIATED CONDUIT AND WIRE TO FEEDING SOURCE.
- 15A, 120V CONNECTION TO MOTORIZED DAMPER BEING REMOVED.
- EXISTING CONNECTION TO FLOOR MOUNTED EXHAUST FAN TO BE REMOVED, REMOVE ASSOCIATED CONDUIT AND WIRE TO FEEDING SOURCE.
- EXISTING PANEL PP1 AND PONY PANEL BEING REMOVED TO ALLOW FOR NEW PANEL PP1A INSTALLATION. ADD EXISTING CIRCUITS TO NEW PANEL AND ADJUST ACCORDINGLY.



NEW WORK NOTES

- UNLESS OTHERWISE INDICATED/ OR NOTED ALL EQUIPMENT SHOWN IS NEW TO BE PROVIDED BY THIS ELECTRICAL CONTRACTOR.
- 15A, 600V 3Ø CONNECTION TO FEED AHU-4, RUN WIRES AND CONDUIT FROM PANEL LP1 TO AHU-4 DISCONNECT SWITCH.
- 60A, 600V 3Ø CONNECTION TO FEED RTU-3 ON THE ROOF, RUN WIRES AND CONDUIT FROM PANEL LP1 TO RTU-3 WEATHER PROOF DISCONNECT SWITCH.
- 10A, 208V 1Ø CONNECTIONS TO PUMPS P1&P2 FED FROM PANEL PP1A.
- CIRCUIT SHOWN ARE FOR GROUPING PURPOSES ONLY. PLEASE VISIT THE SITE PRIOR TO TENDER AND ADD FOR ANY ADDITIONAL REQUIREMENTS AND ACCESSORIES TO COMPLETE THE WORK.
- NEW 15A, 120V CONNECTION TO MOTORIZED DAMPER. RE-USE EXISTING CIRCUITS MADE SPARE BY THIS RENOVATION.
- PROVIDE SEPARATE ZONE FOR DUCT MOUNTED SMOKE DETECTORS, CO-ORDINATE INSTALLATION WITH MECHANICAL CONTRACTOR.
- 15A, 120V CONNECTION TO NEW UNIT HEATER.

NO.	DATE	REVISION	BY
1	DEC.24/25	ISSUED FOR TENDER	MA



ELECTRICAL CONSULTANT:

**MJA ENGINEERING LTD.**  
ELECTRICAL ENGINEERS

556 EDWARD AVENUE, UNIT 82  
RICHMOND HILL, ONTARIO  
L4C 9Y5, CANADA  
PHONE: (905) 780-8590 FAX: (905) 780-8591  
EMAIL: [engineering@mjoeng.com](mailto:engineering@mjoeng.com)  
WEB SITE: [www.mjoeng.com](http://www.mjoeng.com)

© COPYRIGHT NOTES:

DISCLAIMER :

- VERIFY ALL DIMENSIONS PRIOR TO CONSTRUCTION.
- DO NOT SCALE DRAWINGS.
- REPORT ALL DISCOVERIES OF ERRORS, OMISSIONS OR DISCREPANCIES TO THE ARCHITECT OR DESIGN ENGINEER AS APPLICABLE.
- USE ONLY LATEST REVISED DRAWINGS OR THOSE THAT ARE MARKED "ISSUED FOR CONSTRUCTION" AND SIGNED BY THE ENGINEER.
- THIS DOCUMENT SHALL REMAIN THE PROPERTY OF MJA ENGINEERING LTD. THE CLIENT SHALL BE PERMITTED TO RETAIN COPIES FOR INFORMATION AND REFERENCE ONLY. THIS DOCUMENT CANNOT BE MODIFIED AND/OR REPRODUCED BY OTHERS WITHOUT WRITTEN CONSENT OF MJA ENGINEERING LTD.

MECHANICAL CONSULTANT:

**RoMar ENGINEERING**  
MECHANICAL BUILDING SERVICES

PROJECT/LOCATION

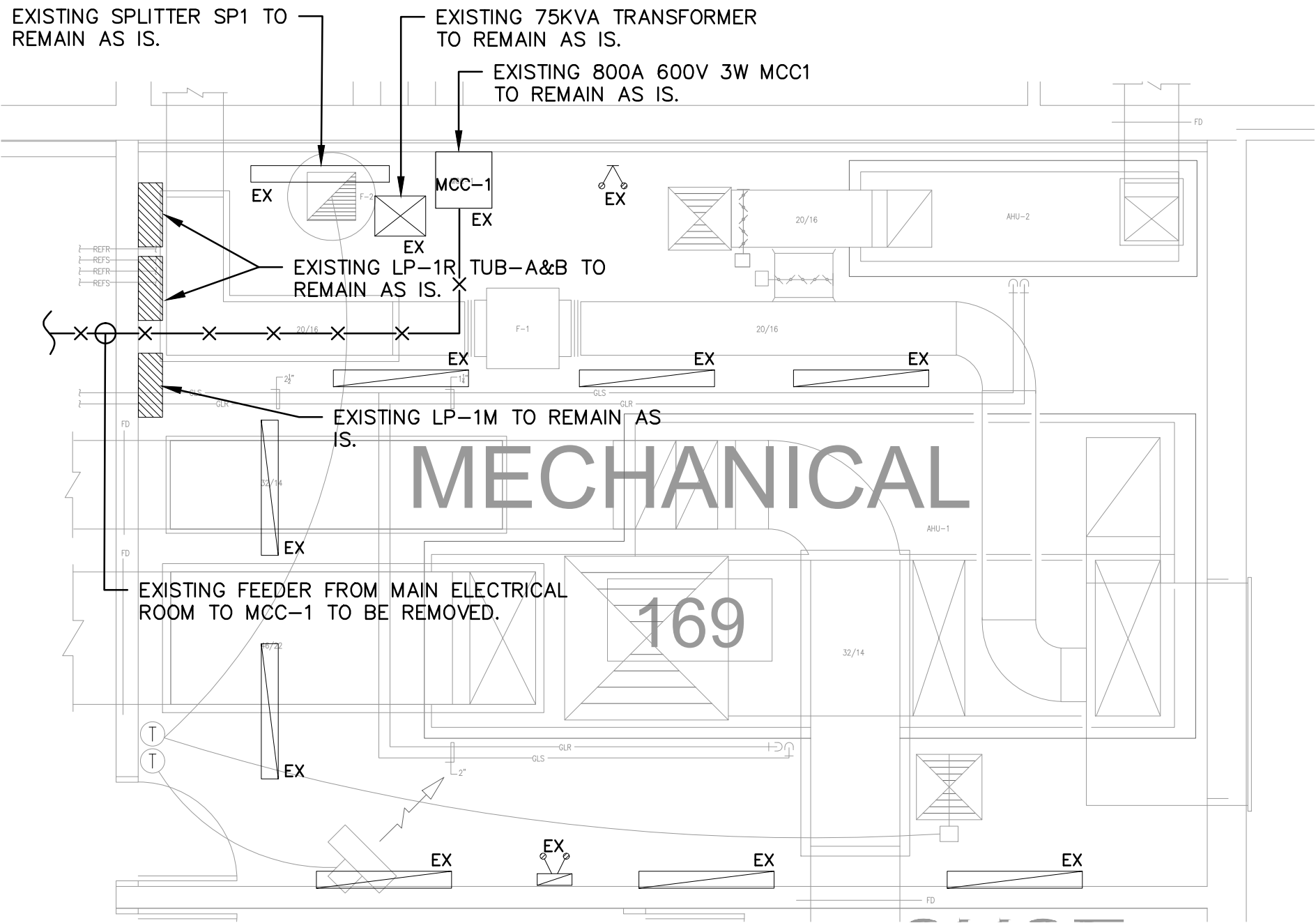
**VAUGHAN WILLARD P.S - AHU REPLACEMENT**

1911 Dixie Rd N, Pickering, ON L1V 1V4

DRAWING NAME

MECH. ROOM 201 DEMO AND NEW WORK - POWER

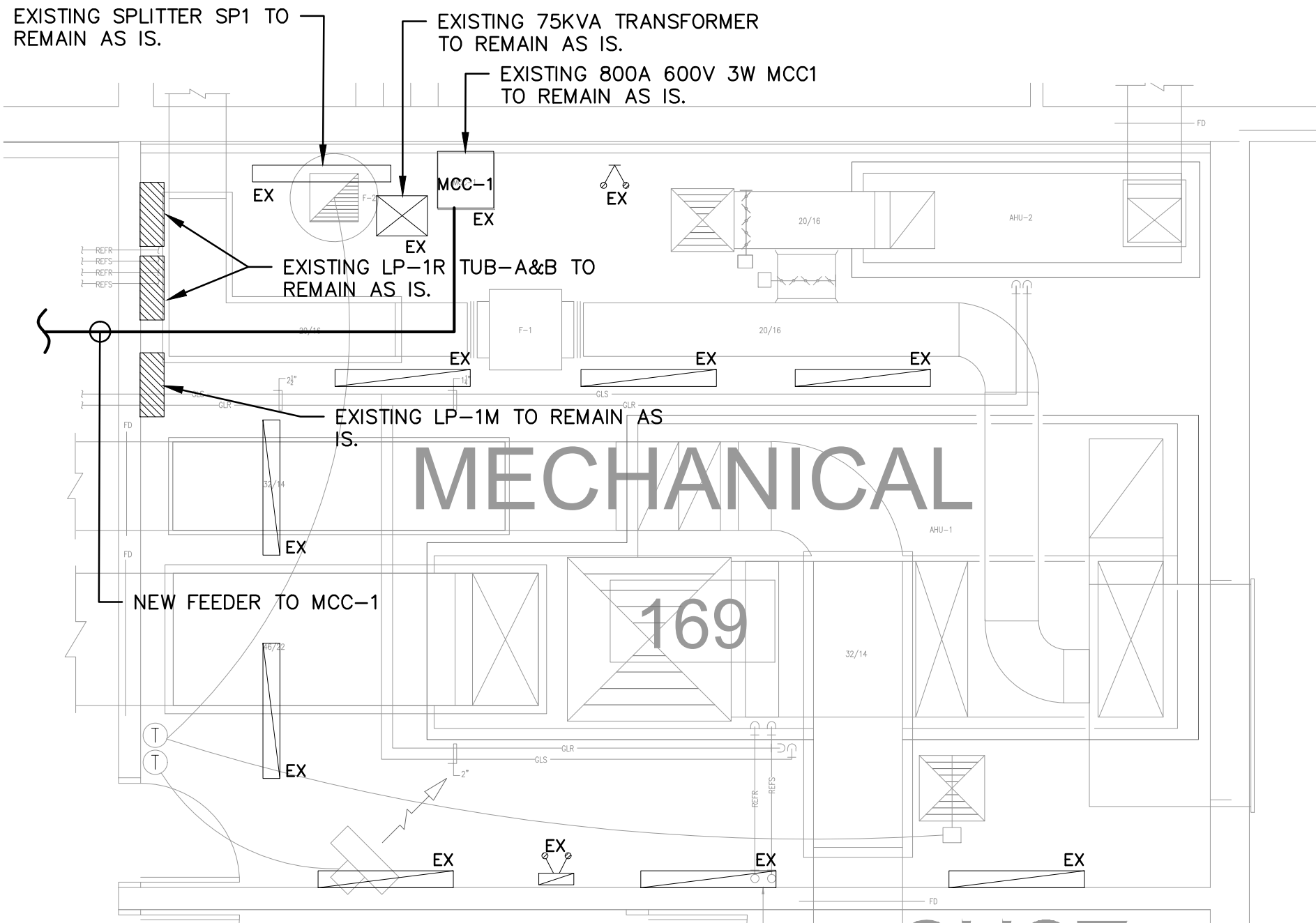
DRAWN M.A.	SCALE AS SHOWN	DRAWING NO.   
---------------	-------------------	---



1 MECH. ROOM 169 DEMO - POWER  
E300 / SCALE: 1/4" = 1'-0"

DEMOLITION NOTES

- UNLESS OTHERWISE NOTED ALL ELECTRICAL EQUIPMENT SHOWN SHALL BE REMOVED AND DISPOSED OF OFF SITE IN AN APPROVED MANNER.
- ELECTRICAL CONTRACTOR SHALL ALSO REMOVE ALL ASSOCIATED CONDUIT AND WIRE FOR REMOVED EQUIPMENT UNLESS OTHERWISE NOTED.
- EXISTING LIGHT TO REMAIN.
- EXISTING MANUAL PULL STATION TO REMAIN.
- EXISTING HORN/STROBE TO REMAIN.
- EXISTING EMERGENCY BATTERY TO REMAIN.
- EXISTING 600V CONNECTION TO HV-1 TO BE REMOVED TO FEEDING SOURCE (PANEL LP1) REMOVE ASSOCIATED CONDUIT AND WIRE TO FEEDING SOURCE.
- EXISTING 600V CONNECTION TO HV-2 TO BE REMOVED TO FEEDING SOURCE (PANEL LP1) REMOVE ASSOCIATED CONDUIT AND WIRE TO FEEDING SOURCE.



2 MECH. ROOM 169 NEW WORK PLAN - POWER  
E300 / SCALE: 1/4" = 1'-0"

NEW WORK NOTES

- UNLESS OTHERWISE INDICATED/ OR NOTED ALL EQUIPMENT SHOWN IS NEW TO BE PROVIDED BY THIS ELECTRICAL CONTRACTOR.
- 45A, 600V 3Ø CONNECTION TO CONDENSING UNIT -1, COORDINATE EXACT TERMINATION POINT ON SITE AND ADJUST ACCORDINGLY. SEE DWG#E500 FOR MORE DETAILS.

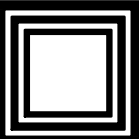
NO.	DATE	REVISION	BY
1	DEC.24/25	ISSUED FOR TENDER	MA





**DDSB**  
Ignite Learning

ELECTRICAL CONSULTANT:



**MJA ENGINEERING LTD.**  
ELECTRICAL ENGINEERS


556 EDWARD AVENUE, UNIT 82  
RICHMOND HILL, ONTARIO  
L4C 9Y5, CANADA  
PHONE: (905) 780-8590 FAX: (905) 780-8591  
EMAIL: [engineering@mjoeng.com](mailto:engineering@mjoeng.com)  
WEB SITE: [www.mjoeng.com](http://www.mjoeng.com)

© COPYRIGHT NOTES:

DISCLAIMER :

- VERIFY ALL DIMENSIONS PRIOR TO CONSTRUCTION.
- DO NOT SCALE DRAWINGS.
- REPORT ALL DISCOVERIES OF ERRORS, OMISSIONS OR DISCREPANCIES TO THE ARCHITECT OR DESIGN ENGINEER AS APPLICABLE.
- USE ONLY LATEST REVISED DRAWINGS OR THOSE THAT ARE MARKED "ISSUED FOR CONSTRUCTION" AND SIGNED BY THE ENGINEER.
- THIS DOCUMENT SHALL REMAIN THE PROPERTY OF MJA ENGINEERING LTD. THE CLIENT SHALL BE PERMITTED TO RETAIN COPIES FOR INFORMATION AND REFERENCE ONLY. THIS DOCUMENT CANNOT BE MODIFIED AND/OR REPRODUCED BY OTHERS WITHOUT WRITTEN CONSENT OF MJA ENGINEERING LTD.

MECHANICAL CONSULTANT:



**RoMar**  
ENGINEERING  
MECHANICAL BUILDING SERVICES

PROJECT/LOCATION

**VAUGHAN WILLARD P.S - AHU REPLACEMENT**

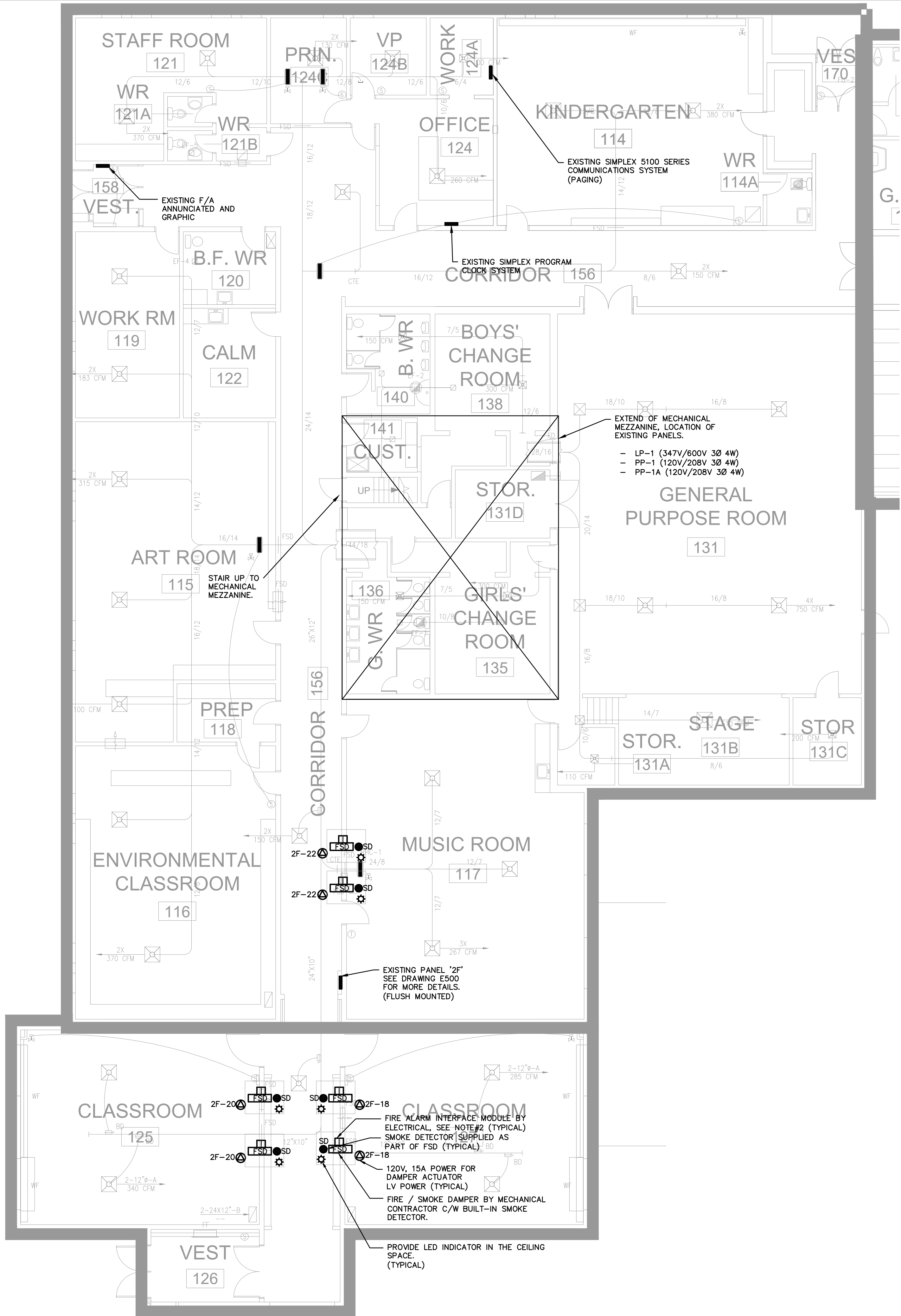
1911 Dixie Rd N, Pickering, ON L1V 1V4

DRAWING NAME

MEC. ROOM 169 - DEMO AND NEW WORK POWER

DRAWN M.A	SCALE AS SHOWN	DRAWING NO.  <b>E-300</b>
CHECKED M.A	DATE DEC. 2025	
PROJECT NO. 2025-189		



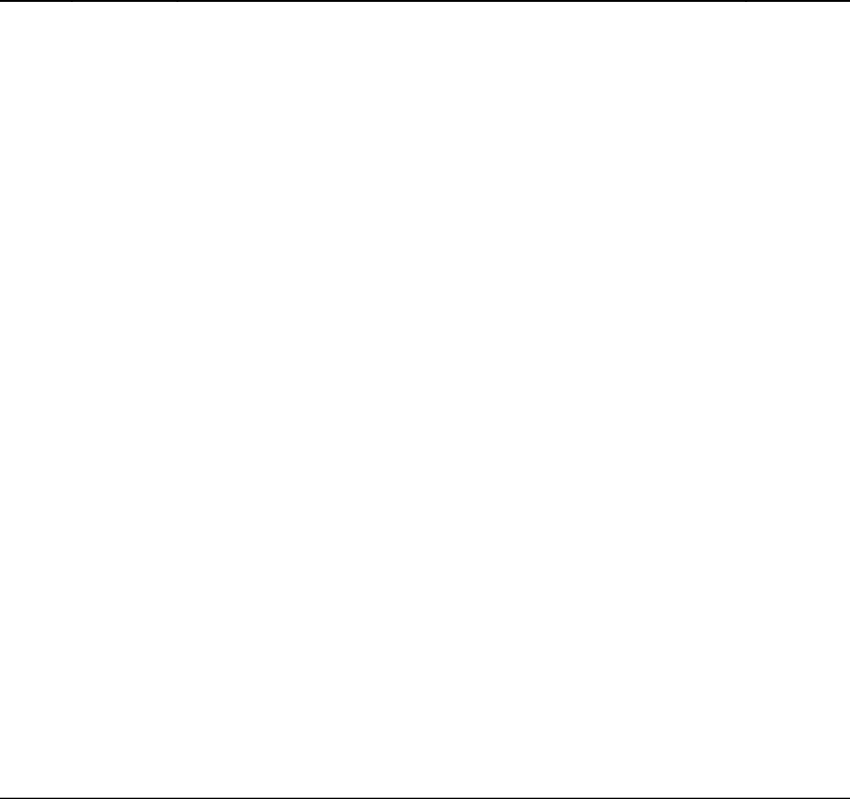


1 GROUND FLOOR PLAN – POWER  
SCALE: 1/8"=1'-0"

NOTES: (RE NEW WORK PLAN)

- UNLESS OTHERWISE NOTED ALL WORK SHOWN IS NEW TO BE PROVIDED BY THIS ELECTRICAL CONTRACTOR.
- PROVIDE SUITABLE SIMPLEX INTERFACE MODULE AT EACH FSD LOCATION C/W CONNECTION TO FSD BUILT-IN SMOKE DETECTOR AND TO SEPARATE ALARM ZONE IN FIRE ALARM CONTROL PANEL.
- ALL CIRCUIT INDICATED IS FOR GROUPING PURPOSE ONLY. ELECTRICAL CONTRACTOR TO CONFIRM ON SITE CIRCUIT BEEN USED AND RE-USE EXISTING CIRCUITS TO FEED NEW ELECTRICAL SERVICES ACCORDINGLY. SHOW CIRCUITS USED ON AS-BUILT DRAWINGS.

NO.	DATE	REVISION	BY
1	DEC.24/25	ISSUED FOR TENDER	MA



ELECTRICAL CONSULTANT:  
**MJA ENGINEERING LTD.**  
ELECTRICAL ENGINEERS  
556 EDWARD AVENUE, UNIT 82  
RICHMOND HILL, ONTARIO  
L4C 9Y5, CANADA  
PHONE: (905) 780-8590 FAX: (905) 780-8591  
EMAIL: [engineering@mjoeng.com](mailto:engineering@mjoeng.com)  
WEB SITE: [www.mjoeng.com](http://www.mjoeng.com)

© COPYRIGHT NOTES:  
DISCLAIMER :  
1. VERIFY ALL DIMENSIONS PRIOR TO CONSTRUCTION.  
2. DO NOT SCALE DRAWINGS.  
3. REPORT ALL DISCOVERIES OF ERRORS, OMISSIONS OR DISCREPANCIES TO THE ARCHITECT OR DESIGN ENGINEER AS APPLICABLE.  
4. USE ONLY LATEST REVISED DRAWINGS OR THOSE THAT ARE MARKED "ISSUED FOR CONSTRUCTION" AND SIGNED BY THE ENGINEER.  
5. THIS DOCUMENT SHALL REMAIN THE PROPERTY OF MJA ENGINEERING LTD. THE CLIENT SHALL BE PERMITTED TO RETAIN COPIES FOR INFORMATION AND REFERENCE ONLY. THIS DOCUMENT CANNOT BE MODIFIED AND/OR REPRODUCED BY OTHERS WITHOUT WRITTEN CONSENT OF MJA ENGINEERING LTD.

MECHANICAL CONSULTANT:  
**RoMar ENGINEERING**  
MECHANICAL BUILDING SERVICES

PROJECT/LOCATION  
**VAUGHAN WILLARD P.S. - AHU REPLACEMENT**  
1911 Dixie Rd N, Pickering, ON L1V 1V4

DRAWING NAME  
**GROUND FLOOR LAYOUT – POWER.**

DRAWN M.A	SCALE AS SHOWN	DRAWING NO.  <
--------------	-------------------	--



