





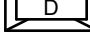
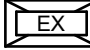
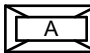






FIRE ALARM LEGEND	
 EX	EXISTING FIRE ALARM PULL STATION
 EX	EXISTING END-OF-LINE RESISTOR (EOL)
	HEAT DETECTOR FIXED TEMPERATURE
	SMOKE DETECTOR C/W INDICATION LIGHT
 ## cd	STROBE ONLY. ## DENOTES STROBE CANDELA RATING. PROVIDE 15cd UNLESS OTHERWISE NOTED.
	DOOR RELEASE HOLDER

LIGHT FIXTURE SCHEDULE			
TAG	DESCRIPTION	MAKE / MODEL	ALTERNATE
	EXISTING RECESSED FLAT PANEL TO BE REMOVED	DEMO	
	EXISTING RECESSED FLAT PANEL	EXISTING	
	LAY IN T-BAR 2X4 LED FIXTURE, CLEAR PRISMATIC ACRYLIC LENSES, 120V, 4000K CW TRIM KIT TO SUIT INSTALLATION	LEVITON LRTA2X4-LED840K040LUNV-P13 C/2 KIT0136 TO SUIT	LITHONIA PEERLESS ELECTRIC VISIONEERING
	INDOOR RECESSED CEILING MOUNTED 4" WET RATED LED POT LIGHT, STANDARD LENS, 120V, 4000K	LIGHTHOLTER, MODULEY MRDL259CSML-210U	ELITE PRESCOLITE INDY JUNO
	SURFACE MOUNTED 4" LED STRIP LIGHT 120V, 4000K, 40L	SIGNIFY FSS40L840-UNV-DIM	LITHONIA PEERLESS ELECTRIC VISIONEERING
	LIGHT SWITCH, 120V	HUBBELL 1200 SERIES (120V)	LEVITON LEGRAND
	SWITCH PLATE MOUNTED PASSIVE INFRARED OCCUPANCY SENSOR WITH BUTTON, WHITE, 120V	LEVITON ODS10-IDW	HUBBELL LEGRAND ACUITY CONTROLS

ENGINEER

CLIENT:

BAYVIEW HEIGHTS PS

1400 GARVOLIN AVE
PICKERING, ON L1W 1J6

SHEET TITLE:

LEGENDS

DISCIPLINE

ELECTRICAL

DRAFTER: BJC

AS NOTED

DESIGNER: SS

DATE: 2025-12-22

APPROVER: SS

BECKER: 16

PROJECT No: A000110F

DRAWING No:

SHEET No:

E-001

- GROUND FLOOR DEMO POWER WORKING NOTES:
- 1

DISCONNECT AND REMOVE EXISTING SURFACE MOUNTED RACEWAY. REMOVE POWER FEED BACK TO NEAREST JUNCTION BOX AND RETAIN FOR REUSE. REMOVE DATA CABLE UP TO CEILING SPACE, COIL AND TAG ACCORDINGLY.
- 2

DISCONNECT AND REMOVE EXISTING PULL STATION TO REMAIN AND RETAIN FOR RELOCATION. REMOVE FEED BACK UP TO NEAREST JUNCTION BOX.
- 3

EXISTING PROJECTOR PLATE AND RECEPTACLE TO BE RELOCATED TO SUIT RENOVATION. DISCONNECT AND REMOVE AND RETAIN FOR REINSTALLATION.
- 4

DISCONNECT AND REMOVE RECEPTACLES C/W FEED BACK TO NEAREST JUNCTION BOX IN CEILING SPACE. RETAIN FEED FOR NEW RECEPTACLES.
- 5

DISCONNECT AND REMOVE DATA OUTLETS C/W CABLING BACK TO CORRIDOR. COIL CABLES IN CORRIDOR CEILING AND TAG FOR REUSE IN NEW LAYOUT.
- 6

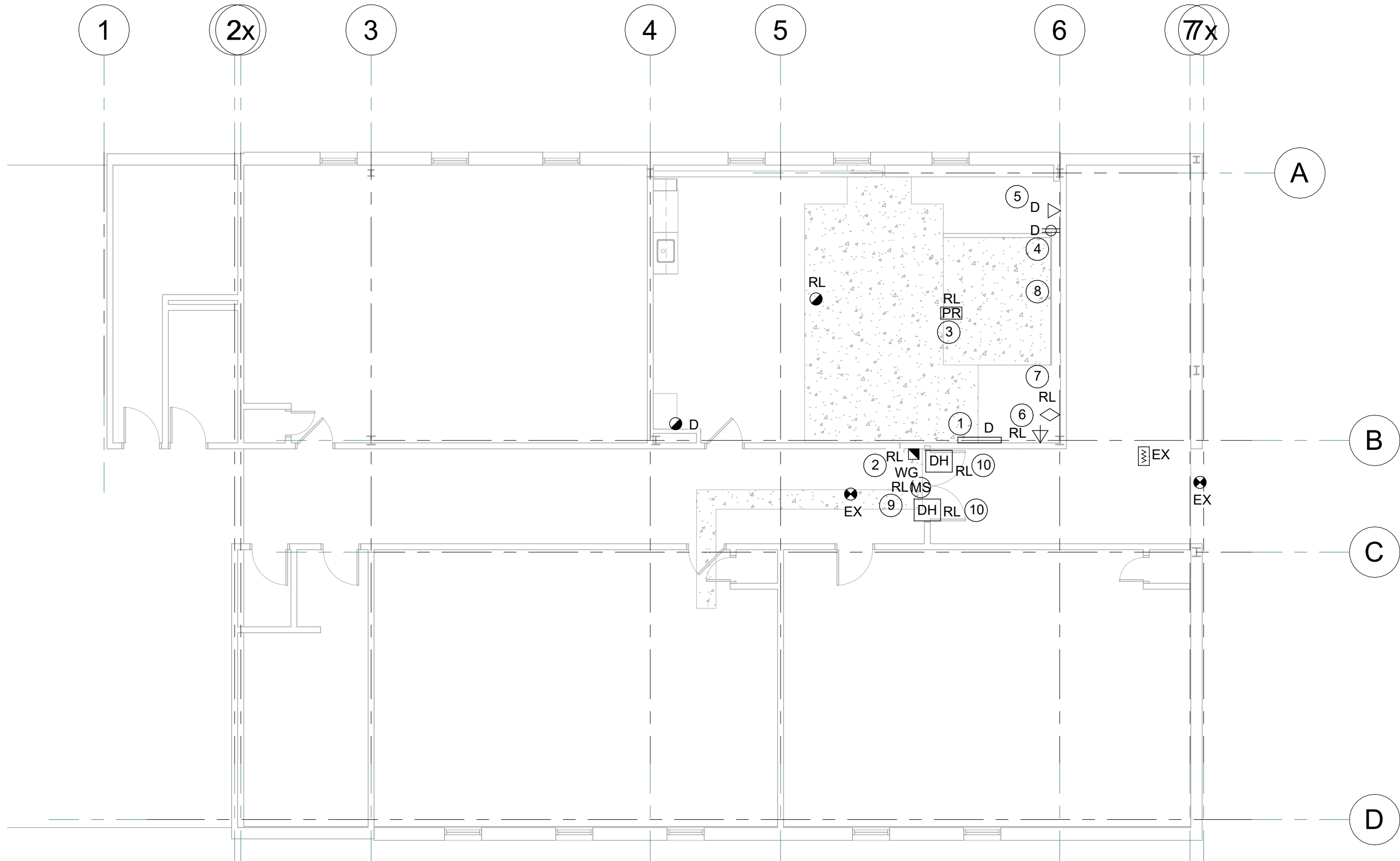
DISCONNECT AND REMOVE EXISTING HDMI OUTLET CONNECTED TO PROJECT AND RETAIN FOR REINSTALLATION TO SUIT NEW LAYOUT.
- 7

DISCONNECT AND REMOVE EXISTING PA C/W CABLING BACK TO CORRIDOR. RETAIN FOR REINSTALLATION. PA CABLE FOR PHONE MAY BE CONCEALED IN WALL AND RUN THROUGH EXISTING BACK BOX ABOVE CEILING DENOTED BY WORKING NOTE 8.
- 8

DISCONNECT AND REMOVE EXISTING CONDUIT SERVICE OLD 120V CLOCK SYSTEM IN CEILING SPACE TO ALLOW FOR ELEVATOR INSTALLATION. EXISTING PA CABLING IS ASSUMED TO RUN THROUGH THIS BACK BOX AS WELL. DISCONNECT AND REMOVE BACK TO CORRIDOR CEILING AND RETAIN FOR REINSTALLATION.
- 9

DISCONNECT AND REMOVE EXISTING MOTION SENSOR AND RETAIN FOR REINSTALLATION.
- 10

DISCONNECT AND REMOVE POWER TO EXISTING DOOR HOLD OPEN DEVICES AND RETAIN FOR REUSE.



GROUND FLOOR - DEMO POWER LAYOUT

SCALE: 1 : 100

- SECOND FLOOR DEMO POWER WORKING NOTES:
- 1

DISCONNECT AND REMOVE DEVICES IN CLASSROOM CONTROL PANEL AND RETAIN FOR REINSTALLATION (SPEAKER AND PA PHONE). DISCONNECT AND REMOVE RECEPTACLE C/W FEED BACK TO NEAREST JUNCTION BOX IN CEILING SPACE.
- 2

EXISTING PULL STATION TO REMAIN. CONDUIT FOR PULL STATION IS FED FROM BACK OF DEVICE AND SURFACE MOUNTED IN CLASSROOM 221. PROTECT FEED DURING DEMOLITION.
- 3

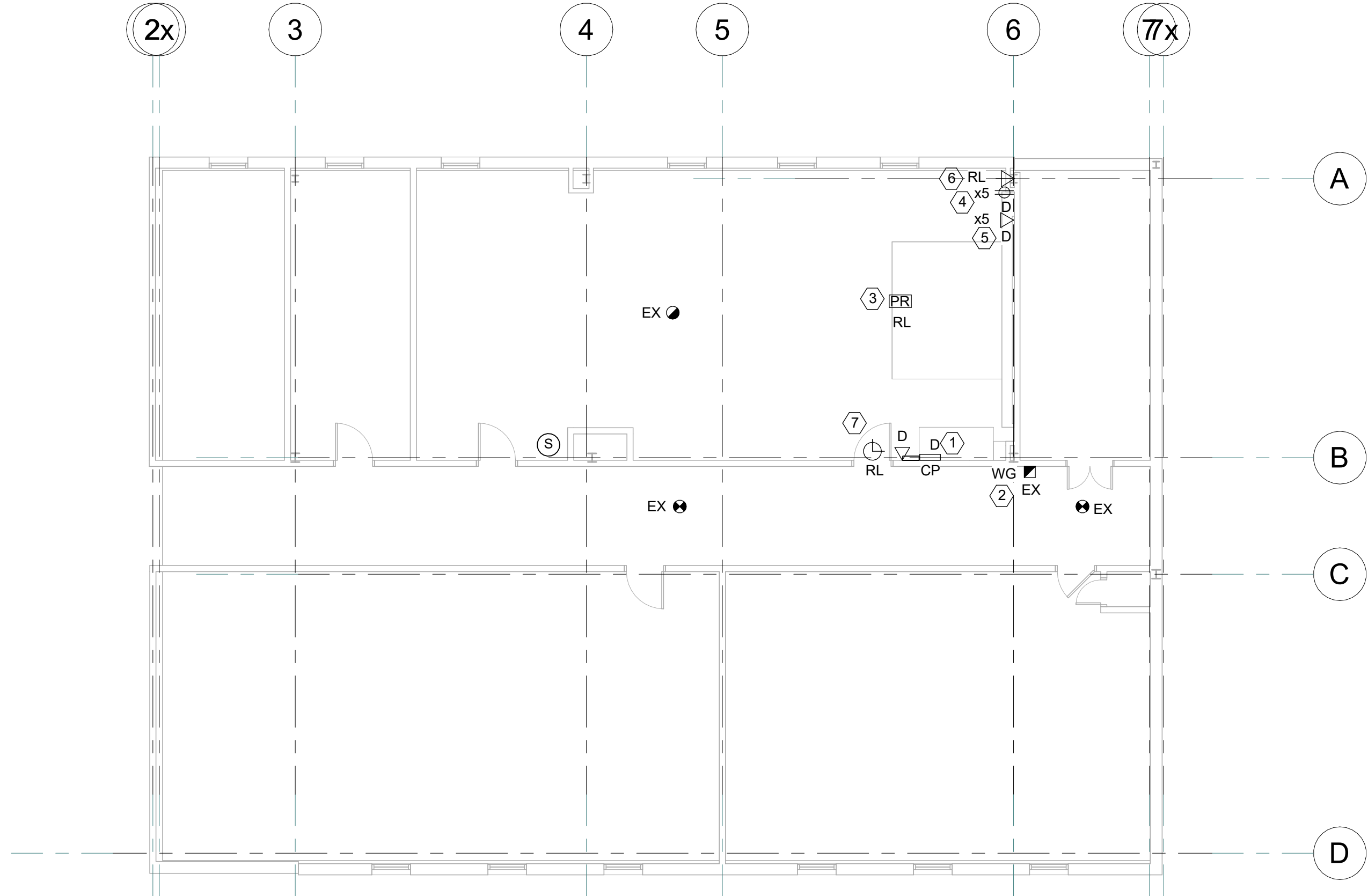
EXISTING PROJECTOR PLATE AND RECEPTACLE TO BE RELOCATED TO SUIT RENOVATION. DISCONNECT AND REMOVE AND RETAIN FOR REINSTALLATION.
- 4

DISCONNECT AND REMOVE RECEPTACLES C/W FEED BACK TO NEAREST JUNCTION BOX IN CEILING SPACE. RETAIN FEED FOR NEW RECEPTACLES.
- 5

DISCONNECT AND REMOVE DATA OUTLETS C/W CABLING BACK TO CORRIDOR. CABLE ROUTE IS FROM ABOVE CLASSROOM CONTROL PANEL. COIL CABLES IN CORRIDOR CEILING AND TAG FOR REUSE IN NEW LAYOUT.
- 6

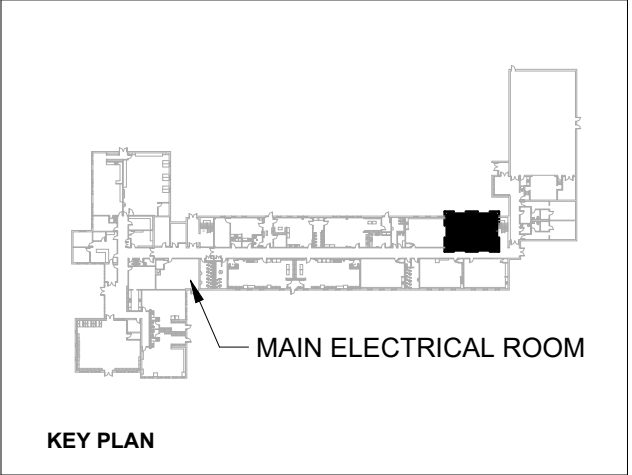
DISCONNECT AND REMOVE EXISTING HDMI OUTLET CONNECTED TO PROJECT AND RETAIN FOR REINSTALLATION TO SUIT NEW LAYOUT.
- 7

DISCONNECT AND REMOVE EXISTING BATTERY OPERATED CLOCK AND RETAIN FOR REINSTALLATION.



SECOND FLOOR - DEMO POWER LAYOUT

SCALE: 1 : 100



DISCLAIMER:
This drawing has been prepared for the use of CIMA+ 's client and may not be used, reproduced or relied upon by third parties, except as agreed by CIMA+ and its client, as required by law or for use by governmental reviewing agencies. CIMA+ accepts no responsibility, and denies any liability whatsoever, to any party that modifies this drawing without CIMA+ 's express written consent. Do not scale this document. All measurements must be obtained from the stated dimensions.

A	2025-12-22	ISSUED FOR PERMIT & TENDER	L.C.
No.	Date	Description	By



CONSULTANT(S):

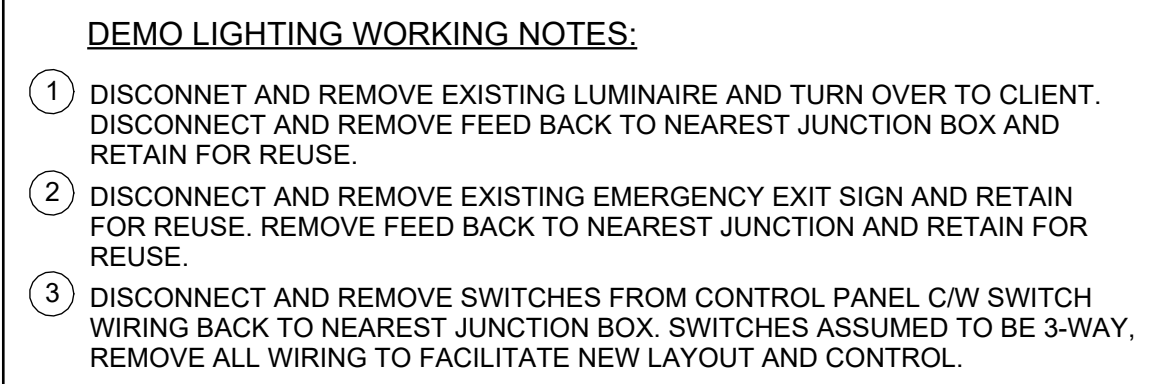
ENGINEER:
CIMA+
900-101 Frederick Street
Kitchener, ON N2H 6R2
T 519.772.2299 F 519.772.2298
www.cima.ca

CLIENT:
BAYVIEW HEIGHTS PS
1400 GARVOLIN AVE
PICKERING, ON L1W 1J6

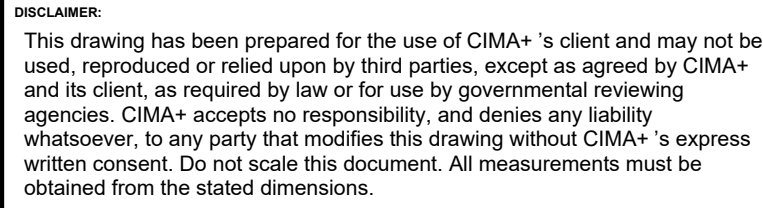
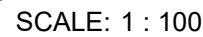
PROJECT NAME:
**BAYVIEW HEIGHTS PS
ELEVATOR RENOVATION**

SHEET TITLE:
**GROUND & SECOND FLOOR -
DEMO POWER LAYOUTS**

DISCIPLINE:		ELECTRICAL	
DRAFTER:	RJC	SCALE:	AS NOTED
DESIGNER:	SS	DATE:	2025-12-22
APPROVER:	SS	CHECKER:	LC
PROJECT No:	A0001195	DRAWING No:	ED101
SHEET No:	of		



SCALE: 1 : 100



A	2025-12-22	ISSUED FOR PERMIT & TENDER	L.C.
No.	Date	Description	By

STAMPS:



CONSULTANT(S)

ENGINEER:



900-101 Frederick Street
Kitchener, ON N2H 6R2
T 519.772.2299 F 519.772.2298
www.cima.ca

CLIENT:

BAYVIEW HEIGHTS PS
1400 GARVOLIN AVE
PICKERING, ON L1W 1J6

PROJECT NAME:

BAYVIEW HEIGHTS PS ELEVATOR RENOVATION

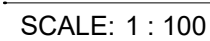
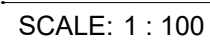
SHEET TITLE:

GROUND & SECOND FLOOR - DEMO LIGHTING LAYOUTS

DISCIPLINE:

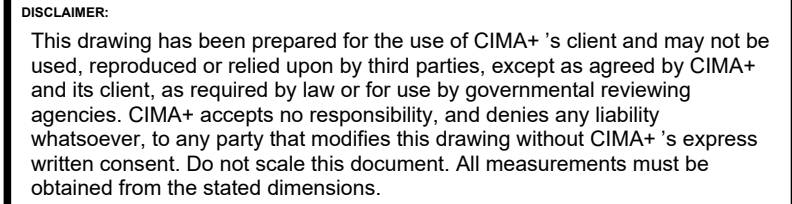
ELECTRICAL

DRAFTER:	RJC	SCALE:	AS NOTED
DESIGNER:	SS	DATE:	2025-12-22
APPROVER:	SS	CHECKER:	LC
PROJECT No:	A0001195	DRAWING No:	ED102
SHEET No:	of		



- (A) SUPPLY AND INSTALL HEAT DETECTOR, LIGHT, SWITCH AND 20A GFI RECEPTACLE IN PIT OF ELEVATOR. GFI RECEPTACLE SHALL BE MOUNTED 100mm (4") BELOW ELEVATOR GROUND FLOOR LANDING OR AS OTHERWISE DIRECTED BY ELEVATOR INSTALLER. THE HEAT DETECTOR INTO NEW FIRE ALARM ZONE. FEED RECEPTACLE FROM NEW BREAKER.
- (B) SUPPLY AND INSTALL THREE (3) SLEEVES POSITIONED AS PER ELEVATOR MANUFACTURER'S INSTRUCTIONS. THEY SHALL BE PROVIDED ABOVE THE MACHINE ROOM FLOOR FOR ELEVATOR OIL AND ELECTRICAL WIRING.
- (C) SUPPLY AND INSTALL A 30A 1PSN 125 VOLT EEMAC 1 LOCKABLE SAFETY SWITCH WITH ONE (1) 15A PLUG FUSE. TIE INTO NEW CIRCUIT.
- (D) SUPPLY AND INSTALL 208 VOLT 30 AMP LOCKABLE FUSED DISCONNECT SWITCH WITH AUXILIARY CONTACT TO BREAKER. FEED, PROVIDE THREE(3) 30 AMP HRC FORM 1 TYPE D FUSES. POSITION DISCONNECT AS PER ELEVATOR MANUFACTURER RECOMMENDATIONS. PROVIDE NEW FEED FROM EXISTING PANEL IN CUSTODIAL ROOM.
- (E) PROVIDE NEW 20A GFI RECEPTACLE AND FEED FROM EXISTING PANEL IN CUSTODIAL ROOM.
- (F) PROVIDE NEW DEDICATED PHONE LINE FOR ELEVATOR.
- (G) PROVIDE NEW FIRE ALARM DEVICES FOR ELEVATOR RECALL. TIE INTO NEW ADDRESSABLE LOOP.

- 1 PROVIDE NEW FIRE ALARM DEVICE. TIE INTO NEW SIGNAL CIRCUIT.
- 2 PROVIDE 120V POWER FOR BARRIER FREE OPERATORS AND PUSH-TO-LOCK SWITCHES. PROVIDE 4"X4" BACK BOX FOR OPERATOR/PUSH-TO-LOCK BUTTON. CONDUIT AND LOW VOLTAGE WIRING. CENTER LINE HEIGHT FOR ROUGH-IN WALL BOXES FOR PUSH BUTTON TO BE 900mm(35") AND 1100mm(43") AFF. MINIMUM 600mm(23.7") AND MAXIMUM 1500mm(59") FROM LEADING EDGE OF DOOR (WHEN OPEN). COORDINATE EXACT LOCATION WITH GENERAL CONTRACTOR/ARCHITECTURAL ELEVATIONS PRIOR TO ROUGH-IN.
- 3 PROVIDE NEW RECEPTACLE.
- 4 PROVIDE RECEPTACLE IN CEILING SPACE FOR FAUCET TRANSFORMER. COORDINATE LOCATION WITH MECHANICAL CONTRACTOR.
- 5 EMERGENCY RESPONSE SYSTEM COMPLETE WITH EMERGENCY PUSH BUTTON AND AUDIBLE/VISUAL ALARM MOUNTED INSIDE AND OUTSIDE WASHROOM BY OTHERS. PROVIDE BACK BOX FOR DEVICES AS NOTED COMPLETE WITH CONDUIT & WIRING TO DOOR CONTROLLER MOUNTED IN CEILING SPACE. PROVIDE 120V FROM DOOR OPERATOR CIRCUIT. COORDINATE EXACT LOCATION WITH GENERAL CONTRACTOR AND BACK BOX REQUIREMENT WITH DOOR MANUFACTURER PRIOR TO ROUGH-IN. PROVIDE AN ADDITIONAL 4"X4" BACK BOX CONDUIT UP TO CEILING SPACE FOR SECOND EMERGENCY CALL BUTTON FOR FUTURE INSTALL BY OWNER. PROVIDE STAINLESS STEEL COVER PLATE.
- 6 PROVIDE POWER TO EXHAUST FAN C/W ISOLATION SWITCH. PROVIDE NEW STARTER IN CONTROL ROOM 101D. TIE INTO LIGHT SWITCH FOR LOW SPEED OPERATION. PROVIDE NEW TIMER MOUNTED IN WASHROOM FOR CONTROL OF HIGH SPEED OPERATION. COORDINATE WITH MECHANICAL CONTRACTOR.
- 7 PROVIDE POWER TO EXHAUST FAN C/W WALL MOUNTED STARTER.
- 8 NEW CONTROL PANEL SUPPLIED AND INSTALLED BY GENERAL CONTRACTOR. PROVIDE NEW DEVICES IN CONTROL PANEL AS PER DETAIL. REINSTALL EXISTING PA PHONE IN NEW CONTROL PANEL.
- 9 REINSTALL EXISTING PROJECTOR C/W PLATE AND POWER FOR RECEPTACLE. REINSTALL EXISTING HDMI OUTLET CONNECTED TO PROJECTOR. COORDINATE EXACT LOCATION WITH OWNER PRIOR TO INSTALLATION.
- 10 PROVIDE 120V POWER TO SUMP CONTROL PANEL C/W 2X 1" FROM CONTROL PANEL TO SUMP PIT. COORDINATE EXACT LOCATION WITH GENERAL CONTRACTOR AND MECHANICAL CONTRACTOR. ALLOW FOR RECEPTACLE IF REQUIRED FOR SUMP PUMP CONTROL PANEL.
- 11 PROVIDE POWER TO NEW DOOR HOLD OPEN DEVICES. EXTEND EXISTING POWER FEED SERVING DOOR HOLD OPEN DEVICES. ALLOW FOR STEP DOWN TRANSFORMER TO 24V IF REQUIRED. DOOR HOLD OPEN DEVICES TO BE CONNECTED TO FIRE ALARM SYSTEM.
- 12 PROVIDE NEW DEVICES AS NOTED.
- 13 REINSTALL EXISTING HEAT DETECTOR. EXTEND WIRING AS REQUIRED.
- 14 PROVIDE NEW FIRE ALARM INITIATING DEVICE AND TIE INTO EXISTING CIRCUIT.



A	2025-12-22	ISSUED FOR PERMIT & TENDER	L.C.
No.	Date	Description	By

STAMPS:



CONSULTANT(S):

ENGINEER:



900-101 Frederick Street
Kitchener, ON N2H 6R2
T 519.772.2299 F 519.772.2298
www.cima.ca

CLIENT:

BAYVIEW HEIGHTS PS
1400 GARVOLIN AVE
PICKERING, ON L1W 1J6

PROJECT NAME:

BAYVIEW HEIGHTS PS
ELEVATOR RENOVATION

SHEET TITLE:

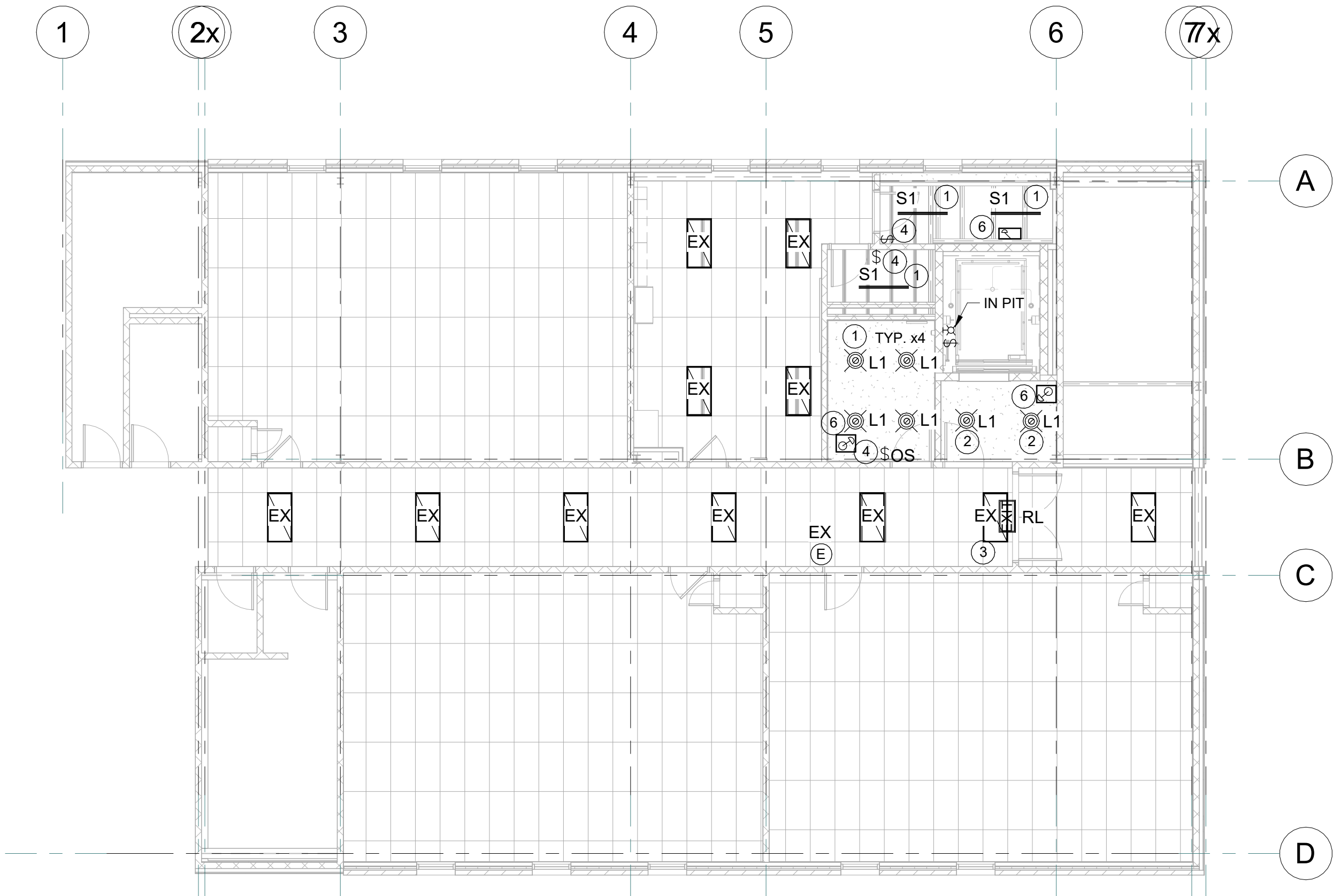
GROUND & SECOND FLOOR - NEW POWER LAYOUTS

DISCIPLINE:

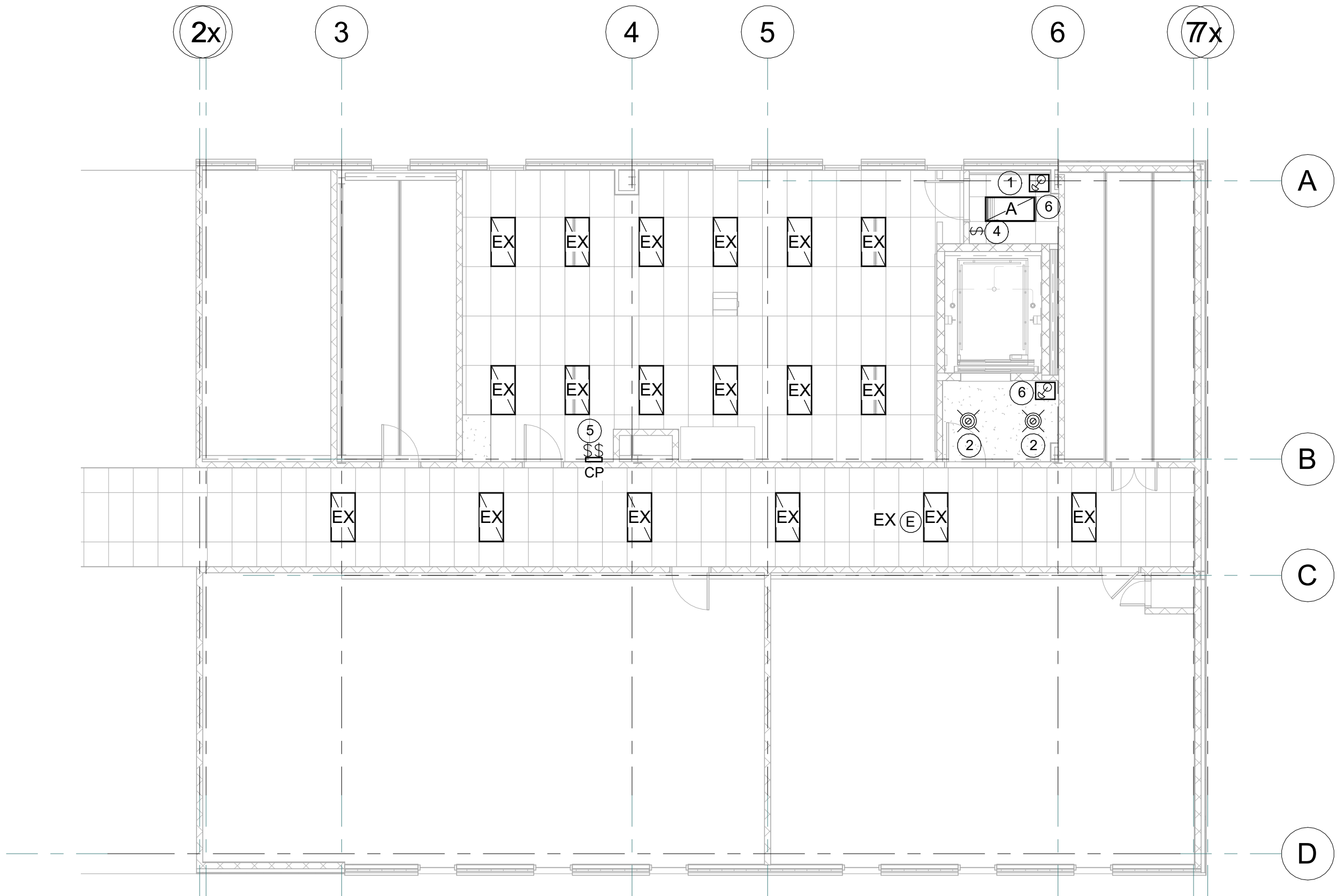
ELECTRICAL

DRAWER:	RJC	SCALE:	AS NOTED
DESIGNER:	SS	DATE:	2025-12-22
APPROVER:	SS	CHECKER:	LC
PROJECT No:	A0001195	DRAWING No:	E-101
SHEET No:	of		

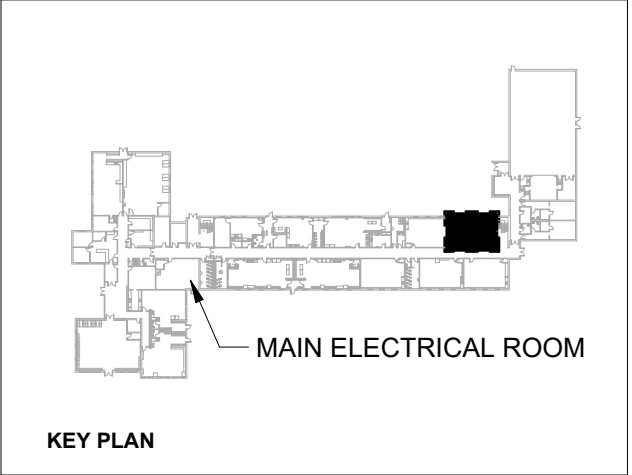
- GROUND FLOOR NEW LIGHTING WORKING NOTES:
- 1 PROVIDE NEW LUMINAIRE AS NOTED. TIE INTO EXISTING LIGHTING CIRCUIT SERVING AREA. TIE INTO LOCAL ROOM CONTROL.
 - 2 PROVIDE NEW LUMINAIRE AS NOTED. TIE INTO CORRIDOR LIGHTING CIRCUIT FOR POWER AND CONTROL.
 - 3 REINSTALL EXISTING EXIT SIGN. EXTEND EXISTING FEED AS REQUIRED.
 - 4 PROVIDE NEW SWITCH AS NOTED FOR LIGHTING CONTROL.
 - 5 PROVIDE NEW SWITCHES MOUNTED IN CONTROL PANEL FOR LIGHTING CONTROL. REWORK SWITCH WIRING AS REQUIRED TO OPERATE AS NOTED IN CONTROL PANEL DETAIL.
 - 6 PROVIDE NEW REMOTE EMERGENCY LIGHT. TIE INTO EXISTING AC AND DC CIRCUIT IN CORRIDOR.



GROUND FLOOR - NEW LIGHTING LAYOUT
SCALE: 1 : 100



SECOND FLOOR - NEW LIGHTING LAYOUT
SCALE: 1 : 100



DISCLAIMER:
This drawing has been prepared for the use of CIMA+ 's client and may not be used, reproduced or relied upon by third parties, except as agreed by CIMA+ and its client, as required by law or for use by governmental reviewing agencies. CIMA+ accepts no responsibility, and denies any liability whatsoever, to any party that modifies this drawing without CIMA+ 's express written consent. Do not scale this document. All measurements must be obtained from the stated dimensions.

No.	Date	Description	L.C.
A	2025-12-22	ISSUED FOR PERMIT & TENDER	By



CONSULTANT(S):

ENGINEER:
CIMA+
900-101 Frederick Street
Kitchener, ON N2H 6R2
T 519.772.2299 F 519.772.2298
www.cima.ca

CLIENT:
BAYVIEW HEIGHTS PS
1400 GARVOLIN AVE
PICKERING, ON L1W 1J6

PROJECT NAME:
**BAYVIEW HEIGHTS PS
ELEVATOR RENOVATION**

SHEET TITLE:
**GROUND & SECOND FLOOR - NEW
LIGHTING LAYOUTS**

DISCIPLINE: ELECTRICAL	
DRAFTER: RJC	SCALE: AS NOTED
DESIGNER: SS	DATE: 2025-12-22
APPROVER: SS	CHECKER: LC
PROJECT No: A0001195	DRAWING No: E-102
SHEET No: of	



A	2025-12-22	ISSUED FOR PERMIT & TENDER	L.C.
No.	Date	Description	By

APPROVED BY

CONSULTANT(S)

ENGINEER:

900-101 Frederick Street
Kitchener, ON N2H 6R2
T 519.772.2299 F 519.772.2298
www.cima.ca

CLIENT

BAYVIEW HEIGHTS PS
1400 GARVOLIN AVE
PICKERING, ON L1W 1J6

PROJECT NAME:

BAYVIEW HEIGHTS PS ELEVATOR RENOVATION

SHEET TITLE:

SINGLE LINE DIAGRAM

DISCIPLINE

ELECTRICAL

DRAFTER:	RJC	SCALE:	AS NOTED
DESIGNER:	SS	DATE:	2025-12-22
APPROVER:	SS	CHECKER:	LC
PROJECT No:	A0001195	DRAWING No:	E-501
SHEET No:	of		