

GOW HASTINGS ARCHITECTS

275 SPADINA ROAD  
TORONTO, ONTARIO M5R 2V3  
416-920-0031  
GOWHASTINGS.COM

ALL DRAWINGS, SPECIFICATIONS, RELATED DOCUMENTS AND DESIGN ARE THE COPYRIGHT PROPERTY OF THE ARCHITECT AND MUST BE RETURNED UPON REQUEST. REPRODUCTION OF THE DRAWINGS, SPECIFICATIONS, RELATED DOCUMENTS AND DESIGN IN WHOLE OR IN PART IS STRICTLY FORBIDDEN WITHOUT THE ARCHITECT'S WRITTEN PERMISSION. THIS DRAWING SHALL NOT BE USED FOR CONSTRUCTION PURPOSES UNLESS COUNTERSIGNED.



250 ROWNTREE DAIRY RD, WOODBRIDGE, ON  
TEL: 905-507-0800  
WEB: WWW.QUASARG.COM

ELECTRICAL DRAWING LIST

DRAWING #	DRAWING NAME
E-001	Electrical Legend & Sheet List
E-002	Keyplans Drawing
E-101	Electrical Demolition Plan - Lighting
E-151	Electrical New Work Plan - Lighting
E-201	Electrical Demolition Plan - Level 1 - Power & Systems
E-251	Electrical New Work Plan - Level 1 - Power & Systems
E-252	Electrical Plans - Level 2 - Power and Systems
E-253	Electrical Plans - Roof - Power and Systems
E-301	Electrical Equipment & Panel Schedules
E-302	Electrical Detail Sheet No. 1
E-303	Electrical Detail Sheet No. 2
E-304	Electrical Detail Sheet No. 3
E-305	Lighting Schedules

ELECTRICAL LEGEND	
SYMBOL	DESCRIPTION
DETAIL REFERENCES	
	SHEET KEYNOTE
	REVISION NUMBER
LINETYPES	
	NEW WORK
	WORK TO BE DEMOLISHED, OR REMOVED
	EXISTING MATERIAL/EQUIPMENT/SERVICES TO REMAIN
	FUTURE WORK (NOT IN SCOPE)
	EXTENTS OF FIRE ALARM ZONE, WET LOCATION, OR OTHER AREA AS NOTED ON PLANS
ABBREVIATIONS	
E	EXISTING TO REMAIN
R	UNDER DEMOLISHED/REMOVED
ER	EXISTING IN RELOCATED POSITION
RR	REMOVE AND RELOCATE
C	CEILING MOUNTED CONNECTION
W	WALL MOUNTED CONNECTION
F	FLOOR MOUNTED CONNECTION
€	CENTRE LINE
AFF	ABOVE FINISHED FLOOR
AFG	ABOVE FINISHED GRADE
OIC	OVER COUNTER
UIC	UNDER CABINET
UIF	UNDER RAISED FLOOR
CCT	CIRCUIT
CTE	CONNECT TO EXISTING
AFCI	ARC FAULT CIRCUIT INTERRUPTER
GFCI	GROUND FAULT CIRCUIT INTERRUPTER
GFI	GROUND FAULT INTERRUPTER
IG	ISOLATED GROUND
TL	TWIST LOCK
TR	TAMPER RESISTANT
WG	WIRE GUARD
WP	WEATHER PROOF
XP	EXPLOSION PROOF
RI	ROUGH-IN ONLY
NIC	NOT IN CONTRACT
SIM.	SIMILAR TO
TYP.	TYPICAL
ABBREVIATIONS - CODES AND STANDARDS	
OBC	ONTARIO BUILDING CODE
OESC	ONTARIO ELECTRICAL SAFETY CODE
OFC	ONTARIO FIRE CODE
ABBREVIATIONS - CEILING TYPES	
ACT	ACOUSTIC CEILING TILE (T-BAR)
EXP	EXPOSED CEILING
OWSJ	OPEN WEB STEEL JOISTS
PCC	PAINTED OR POPCORN CEILING ON EXPOSED CONCRETE
WD	WOOD CEILING
ANNOTATIONS	
CL	CLOSET
WR	WASHROOM
PLUMBING	
PTP	ELECTRONIC TRAP PRIMER
PSC	PLUMBING SENSOR CONTROL (TOUCHLESS FAUCETS)
HVAC	
○	THERMOSTAT OR TEMPERATURE SENSOR
	TIMER CONTROL
BBH	ELECTRIC BASEBOARD HEATER (BBH)
FFH	FORCED FLOW HEATER
ERV	ENERGY RECOVERY VENTILATOR
HRU	HEAT RECOVERY UNIT
MUA	MAKE-UP AIR UNIT
CONDUIT AND BOXES	
	CONDUIT WITH END BUSHING
	CONDUIT UP
	CONDUIT DOWN
	CONDUIT CONTINUES
	JUNCTION BOX
	PULL BOX
	HAND HOLE
CONNECTIONS TO EQUIPMENT	
DW	DISHWASHER
FR	FRIDGE
MW	MICROWAVE
HD	HAND DRYER, ALLOW UP TO 208V-1PH-20A
	1-PHASE DIRECT CONNECTION OUTLET AS NOTED.
	3-PHASE DIRECT CONNECTION OUTLET AS NOTED.
THIS LEGEND IS GENERIC. ALL SYMBOLS LISTED MAY NOT BE APPLICABLE FOR THIS PROJECT. REFER TO FLOOR PLANS TO DETERMINE USED DEVICES AND EQUIPMENT.	

ELECTRICAL LEGEND	
SYMBOL	DESCRIPTION
	SYSTEM FURNITURE WALL FEED FOR POWER AND TELECOMMUNICATIONS UNLESS NOTED OTHERWISE. "C" ADJACENT TO SYMBOL DENOTES CEILING FEED, "F" ADJACENT TO SYMBOL DENOTES FLOOR FEED.
W	ADJACENT TO 3-PHASE DIRECT CONNECTION, DENOTES WALL SYSTEM FURNITURE FEED FOR POWER AND COMMUNICATIONS.
	CONNECTION TO SINGLE PHASE MOTOR, HP (KW) AS NOTED, PROVIDE LOCAL DISCONNECT.
	THREE PHASE MOTOR, HP (KW) AS NOTED, PROVIDE LOCAL DISCONNECT.
LIGHTING CONTROLS	
REFER TO SPECIFICATIONS AND RESPECTIVE SCHEDULES FOR EXACT REQUIREMENTS	
	SWITCH OR OTHER USER INTERFACE DEVICE AS DESCRIBED ON LIGHTING CONTROLS SCHEDULE.
	3-WAY SWITCH
DIM	ADJACENT TO SWITCH, DENOTES DIMMING SWITCH.
K	ADJACENT TO SWITCH, DENOTES KEY SWITCH.
T	ADJACENT TO SWITCH, DENOTES COUNTDOWN TIMER SWITCH
AT	ADJACENT TO SWITCH, DENOTES ASTRONOMICAL TIMER SWITCH
DS	ADJACENT TO SWITCH, DENOTES DOOR SWITCH
PIR	PASSIVE INFRARED SENSOR
DT	DUAL TECHNOLOGY SENSOR
UT	ULTRASONIC SENSOR
OS	SENSOR (TYPE UNKNOWN)
M	ADJACENT TO SWITCH, DENOTES MASTER CONTROL FOR ALL LUMINAIRES IN A ROOM OR SPACE, OR AS NOTED.
	WALL MOUNTED SWITCH/OCCUPANCY SENSOR. PIR DENOTES PASSIVE INFRARED, DT DENOTES DUAL PASSIVE INFRARED/ULTRASONIC, LINE VOLTAGE TO SUIT CONTROLLED CIRCUIT, OR AS NOTED.
RP	RELAY PANEL
PP	POWER PACK
SC	SCENE CONTROLLER.
	PHOTOCELL SENSOR
	PHOTOCELL SENSOR, "PC" DENOTES CLOSED LOOP PHOTOCELL CONTROL, "PO" DENOTES OPEN LOOP PHOTOCELL CONTROL
	CEILING MOUNTED OCCUPANCY SENSOR, PIR DENOTES PASSIVE INFRARED, UT DENOTES ULTRASONIC, OR MICROPHONIC, DT DENOTES DUAL TECHNOLOGY, "OS" DENOTES UNKNOWN TECHNOLOGY.
	WALL MOUNTED OCCUPANCY SENSOR.
DISTRIBUTION EQUIPMENT	
	TRANSFORMER, PLAN VIEW
	SURFACE MOUNTED LIGHTING AND RECEPTACLE PANELBOARD
	RECESSED RECEPTACLE AND LIGHTING PANELBOARD
	DISTRIBUTION PANELBOARD
	DISCONNECT SWITCH
	FUSED DISCONNECT SWITCH
	CONTACTOR
	LOOSE STARTER, COORDINATE STARTING CHARACTERISTIC WITH EQUIPMENT REQUIREMENTS.
	COMBINATION STARTER.
VFD	ADJACENT TO STARTER, DENOTES VARIABLE FREQUENCY DRIVE
POWER RECEPTACLES AND BOXES	
	120V U-GROUND DUPLEX RECEPTACLE.
	120V U-GROUND DUPLEX RECEPTACLE MOUNTED ABOVE COUNTER TOP OR AS INSTRUCTED ON SITE.
	120V U-GROUND 20A DUPLEX RECEPTACLE.
	120V U-GROUND DUPLEX RECEPTACLE MOUNTED ABOVE COUNTER TOP OR AS INSTRUCTED ON SITE.
	120V U-GROUND DUPLEX RECEPTACLE - AUTOMATICALLY CONTROLLED (ASHRAE 90.1-2013, 8.4.2).
	120V U-GROUND 20A DUPLEX RECEPTACLE - AUTOMATICALLY CONTROLLED (ASHRAE 90.1-2013, 8.4.2).
	120V U-GROUND DUPLEX RECEPTACLE - HALF OF RECEPTACLE AUTOMATICALLY CONTROLLED (ASHRAE 90.1-2013, 8.4.2).
	MANUALLY CONTROLLED SPLIT RECEPTACLE
	INDICATES RECEPTACLE COMPLETE WITH ONE TYPE A AND ONE TYPE C USB CHARGING PORTS.
	14-30R RECEPTACLE FOR LAUNDRY DRYER, OR OTHER RECEPTACLE AS NOTED
	14-50R RECEPTACLE FOR ELECTRONIC RANGE, OR OTHER RECEPTACLE AS NOTED, PROVIDE 40A/2P BREAKER TO SUIT.
THIS LEGEND IS GENERIC. ALL SYMBOLS LISTED MAY NOT BE APPLICABLE FOR THIS PROJECT. REFER TO FLOOR PLANS TO DETERMINE USED DEVICES AND EQUIPMENT.	

ELECTRICAL LEGEND	
SYMBOL	DESCRIPTION
	SPECIAL RECEPTACLE, VERIFY OUTLET REQUIREMENTS PRIOR TO ROUGH-IN.
	SPECIAL RECEPTACLE, VERIFY OUTLET REQUIREMENTS PRIOR TO ROUGH-IN.
	FLOOR RECEPTACLE OR RECEPTACLE IN FLOOR BOX (POWER ONLY)
	SERVICE POLE, PROVIDE POWER TO JUNCTION BOX IN CEILING SPACE ABOVE, DEVICES ON POLE AS NOTED ON PLANS.
FB1	ADJACENT TO FLOOR RECEPTACLE, DENOTES FLOOR BOX TYPE
*	ADJACENT TO DEVICE, DENOTES DEVICE CONNECTED TO EMERGENCY POWER
LIGHTING FIXTURES	
SYMBOLS IN ACCORDANCE WITH IES DG-3-00 AND IES HB-10-11 WHERE NOT DETAILED OTHERWISE HERE. REFER TO LIGHTING FIXTURE SCHEDULE FOR FURTHER DETAILS AND EXACT FIXTURE REQUIREMENTS.	
	LINEAR LUMINAIRE, SURFACE MOUNTED TO CEILING
	LINEAR LUMINAIRE, RECESSED IN CEILING
	LINEAR LUMINAIRE, SUSPENDED, PENDANT, CHAIN, STEM, OR AIRCRAFT CABLE HUNG TO SUIT APPLICATION, OR AS NOTED IN SCHEDULE. "X", WHEN USED DENOTES POWER FEED LOCATION.
	LINEAR LUMINAIRE, WALL MOUNTED
	AS ABOVE, CONNECTED TO EMERGENCY OR NIGHT LIGHTING CIRCUIT AS INDICATED.
	ROUND OR SQUARE DOWNLIGHT, RECESSED
	RECESSED DOWNLIGHTS, CONNECTED TO EMERGENCY OR NIGHT LIGHT CIRCUIT
	ROUND SUSPENDED LUMINAIRE
	WALL SCONCE OR OTHER WALL MOUNTED LUMINAIRES.
EM	CONNECTED TO EMERGENCY NIGHT LIGHT CIRCUIT (24 HOUR)
CE	CONNECTED TO EMERGENCY CIRCUIT, PROVIDE CUL 904 LISTED SHUNT TRIP RELAY OR EQUAL TO PERMIT CONTROL OF LUMINAIRE WITH ZONING BASED ON LOCAL LIGHTING CONTROLS.
NL	LUMINAIRE CONNECTED TO NON-EMERGENCY NIGHT LIGHT CIRCUIT (24 HOUR)
A, B, Z1, Z2, ETC.	DENOTES ZONING/CIRCUITING ASSIGNMENTS FOR LUMINAIRES AND CONTROLS IN THE SAME SPACE.
EMERGENCY LIGHTING	
REFER TO EMERGENCY LIGHTING SCHEDULE FOR EXACT FIXTURE REQUIREMENTS.	
	CEILING OR WALL MOUNTED ILLUMINATED EXIT SIGN, SHADED AREA INDICATES ILLUMINATED FACE, PROVIDE DIRECTIONAL ARROWS AS INDICATED ON PLANS.
	CEILING OR WALL MOUNTED ILLUMINATED EXIT SIGN, SHADED AREA INDICATES ILLUMINATED FACE, PROVIDE DIRECTIONAL ARROWS AS INDICATED ON PLANS.
SL	DENOTES 'SELF-LUMINOUS' EXIT SIGN
PL	PHOTOLUMINOUS EXIT SIGN
	EMERGENCY LIGHTING BATTERY UNIT, WITH AND WITHOUT HEADS.
	ONE AND TWO HEAD WALL MOUNTED EMERGENCY LIGHTING REMOTE UNITS.
	ONE AND TWO HEAD CEILING MOUNTED EMERGENCY LIGHTING REMOTE UNITS.
	RECESSED EMERGENCY REMOTE HEAD.
EM	DENOTES 'EMERGENCY'
CCT	CORRELATED COLOUR TEMPERATURE
CRI	COLOUR RENDERING INDEX
EXTERIOR LIGHTING	
	ARM MOUNTED LUMINAIRE ON POLE, DIRECTIONAL ARROW, WHERE INDICATED DENOTES PRIMARY LUMEN ORIENTATION.
	POST TOP LUMINAIRE ON POLE, DIRECTIONAL ARROW, WHERE INDICATED DENOTES PRIMARY LUMEN ORIENTATION.
	LIGHTING BOLLARD, DIRECTIONAL ARROW, WHERE INDICATED DENOTES PRIMARY LUMEN ORIENTATION.
	GROUND MOUNTED FLOOD LIGHT
TELECOMMUNICATIONS	
	SYSTEM FURNITURE FEED.
W	ADJACENT TO SYSTEM FURNITURE FEED, DENOTES WALL SYSTEM FURNITURE FEED FOR COMMUNICATIONS.
F	ADJACENT TO SYSTEM FURNITURE FEED, DENOTES FLOOR SYSTEM FURNITURE FEED FOR COMMUNICATIONS.
C	ADJACENT TO SYSTEM FURNITURE FEED, DENOTES CEILING SYSTEM FURNITURE FEED FOR COMMUNICATIONS (SERVICE POLE OR DROP CORD AS NOTED).
	CABLE TRAY (LADDER TYPE)
	CABLE TRAY (BASKET TYPE)
	WALL MOUNTED DATA (D) OR VOICE (V) OUTLET, PROVIDE 1V AND 1D UNLESS NOTED OTHERWISE.
	WALL MOUNTED VOICE (TELEPHONE) OUTLET, PROVIDE 1V UNLESS NOTED OTHERWISE.
THIS LEGEND IS GENERIC. ALL SYMBOLS LISTED MAY NOT BE APPLICABLE FOR THIS PROJECT. REFER TO FLOOR PLANS TO DETERMINE USED DEVICES AND EQUIPMENT.	

ELECTRICAL LEGEND	
SYMBOL	DESCRIPTION
	WALL MOUNTED DATA OUTLET, PROVIDE 1D UNLESS NOTED OTHERWISE.
	WALL MOUNTED TELEVISION OUTLET.
	VOICE, DATA, OR TV OUTLET AS DESCRIBED ABOVE, MOUNTED ABOVE COUNTER TOP OR AS INSTRUCTED ON SITE.
B	ADJACENT TO COMMUNICATIONS OUTLET, INDICATES BLANK-OFF PLATE.
	HDMI OUTLET.
	AUDIO VIDEO GANG, AS NOTED.
	WIRELESS ACCESS POINT (WIFI)
	AUDIO VISUAL SYSTEM SPEAKER, CEILING MOUNTED.
	AUDIO VISUAL SYSTEM SPEAKER, WALL MOUNTED.
	PUBLIC ADDRESS SYSTEM SPEAKER, CEILING MOUNTED.
	PUBLIC ADDRESS SYSTEM SPEAKER, WALL MOUNTED.
	PUBLIC ADDRESS SPEAKER, WALL MOUNTED HORN SPEAKER.
	PUBLIC ADDRESS SYSTEM HANDSET
	PUBLIC ADDRESS SYSTEM ADMIN CONTROL CONSOLE
	PUBLIC ADDRESS SPEAKER VOLUME CONTROL SWITCH.
	INTERCOM
IDC	INSULATION DISPLACEMENT CONNECTION
	CLOCK
	GPS CLOCK SYSTEM MASTER TRANSMITTER
	GPS CLOCK SYSTEM GPS RECEIVER
	GPS CLOCK SYSTEM SETTLETIME TRANSMITTER (RECEIVER)
	GPS CLOCK SYSTEM RECEIVER SWITCH
ACCESS CONTROL AND DOOR HARDWARE	
	CARD READER
	DOOR ALARM SOUNDER
	DOOR CONTACT
	OVERHEAD DOOR CONTACT
	ELECTRIC LATCH RETRACTION
	ELECTRIC STRIKE
	ELECTRIC POWER TRANSFER CABLE
	POWER TRANSFER HINGE
	KEY SWITCH
	ELECTROMAGNETIC LOCK
	MOTORIZED LATCH RETRACTION, PROVIDE 120 V.
	REQUEST TO EXIT SENSOR
	MUSHROOM HEAD PUSH BUTTON FOR 'REQUEST TO EXIT' MAGLOCK RELEASE, OR OTHER PUSH BUTTON AS INDICATED
	BARRIER FREE DOOR OPERATOR PUSH BUTTON
	BARRIER FREE DOOR OPERATOR PUSH BUTTON
	TOUCHLESS "WAVE SWITCH" FOR DOOR OPERATOR CONTROL
	DOOR BELL C/W SOUNDER AND STROBE
	DOOR BELL (SOUNDER ONLY)
INTRUSION DETECTION	
	GLASS BREAK (GB)
	MOTION DETECTOR (MD)
	KEYPAD (KP)
VIDEO SURVEILLANCE	
	CCTV CAMERA
C/P	CCTV CAMERA, CEILING OR POLE MOUNTED
	CCTV CAMERA, WALL MOUNTED
PTZ	PAN-TILT-ZOOM
DURESS SYSTEM	
	DURESS BUTTON (MOUNTED ON UNDERSIDE OF TABLETOP)
	WALL MOUNTED DURESS BUTTON WITH POLYCARBONATE ANTI-TAMPER COVER
	DURESS SYSTEM STROBE LIGHT
FIRE DETECTION AND ALARM - GENERAL	
CACF	CENTRAL ALARM AND CONTROL FACILITY
DCC	DISPLAY AND CONTROL CENTER
FACP	FIRE ALARM CONTROL PANEL
FATP	FIRE ALARM TRANSPONDER PANEL
FAAP	FIRE ALARM ANNUNCIATOR PANEL
FAAG	FIRE ALARM ACTIVE ANNUNCIATOR C/W GRAPHIC
FAPG	FIRE ALARM PASSIVE GRAPHIC
FAMP	FIRE ALARM ULC MONITORING PANEL
FAZ	FIRE ALARM ZONE
FSZ	FIRE ALARM SUPERVISORY ZONE
FDSPCP	FIRE ALARM PANEL (FACP, FAAP, FAMP) AS DENOTED ON PLANS
FDSCP	FIRE DETECTION AND SUPPRESSION CONTROL PANEL
	FIRE ALARM PANEL (FACP, FAAP, FAMP) AS DENOTED ON PLANS
THIS LEGEND IS GENERIC. ALL SYMBOLS LISTED MAY NOT BE APPLICABLE FOR THIS PROJECT. REFER TO FLOOR PLANS TO DETERMINE USED DEVICES AND EQUIPMENT.	

ELECTRICAL LEGEND	
SYMBOL	DESCRIPTION
	FIRE DETECTION - INITIATION DEVICES
	MANUAL PULL STATION (MPS)
LX	WHERE NOTED ADJACENT TO MANUAL PULL STATIONS, DENOTES PULL STATION C/W POLYCARBONATE (LEXAN) COVER.
WG	WHERE NOTED ADJACENT TO MANUAL PULL STATIONS, DENOTES PULL STATION C/W WIRE GUARD COVER.
A	WHERE NOTED ADJACENT TO MANUAL PULL STATIONS, DENOTES MANUAL PULL STATION C/W AUXILIARY CONTACT.
	PHOTOELECTRIC SMOKE DETECTOR
	SAME AS ABOVE, WALL MOUNTED
SA	WHEN ADJACENT TO PHOTOELECTRIC SMOKE DETECTOR, INDICATES RESIDENTIAL SMOKE ALARM SIGNAL CIRCUITS
	RESIDENTIAL SMOKE ALARM, 120 VOLT, COMPLETE WITH STROBE, FOR AREAS AS INDICATED ON PLANS BY "CO", PROVIDE INTEGRAL CARBON MONOXIDE DETECTION.
	SAME AS ABOVE, WALL MOUNTED
	DUCT MOUNTED SMOKE DETECTOR
CO	CARBON MONOXIDE DETECTOR
VESDA	VERY EARLY SMOKE DETECTING APPARATUS
BSDT	BEAM SMOKE DETECTOR TRANSMITTER
BSDR	BEAM SMOKE DETECTOR RECEIVER (OR REFLECTOR)
ASD	ASPIRATING SMOKE DETECTOR
	END OF LINE (EOL) DEVICE ON ZONE INITIATION OR SIGNAL CIRCUITS
	HEAT DETECTOR - FIXED TEMPERATURE
	SAME AS ABOVE, WALL MOUNTED
HT	ADJACENT TO HEAT DETECTOR, DENOTES "HIGH TEMPERATURE"
	HEAT DETECTOR - 94 DEGREES C (200 DEGREES F) FIXED TEMPERATURE
	HEAT DETECTOR - 58 DEGREES C (135 DEGREES F) FIXED TEMPERATURE AND RATE OF RISE
	LINEAR HEAT DETECTION CABLE
	FLOW SWITCH
FIRE DETECTION AND ALARM - SUPERVISORY DEVICES	
	LOW TANK LEVEL
	LOSS OF POWER
	LOW TEMPERATURE
	PRESSURE SWITCH
	SUPERVISED VALVE
	SUPERVISED VALVE
FIRE DETECTION AND ALARM - SIGNALLING DEVICES	
	FIRE ALARM BELL, WALL MOUNTED
C	ADJACENT TO BELL OR HORN, DENOTES CEILING MOUNTED
	FIRE ALARM HORN
M	ADJACENT TO FIRE ALARM HORN, DENOTES 'MINI' HORN
	FIRE ALARM HORN/STROBE, WALL MOUNTED.
	FIRE ALARM EVACUATION SPEAKER, CEILING MOUNTED
	FIRE ALARM EVACUATION SPEAKER, COMPLETE WITH STROBE LIGHT, CEILING MOUNTED
	FIRE ALARM EVACUATION SPEAKER, WALL MOUNTED
	FIRE ALARM EVACUATION SPEAKER COMPLETE WITH STROBE LIGHT, WALL MOUNTED
	SILENCE SWITCH
	FIRE ALARM WALL MOUNTED STROBE LIGHT
FIRE DETECTION AND ALARM - VOICE COMMUNICATION DEVICES	
	EMERGENCY TELEPHONE FOR FIREFIGHTERS' USE
FIRE DETECTION AND ALARM - OTHER DEVICES	
	END OF LINE DEVICE
	WIRE GUARD
	"DO NOT ENTER" SIGN
	KEY SWITCH FOR FIREFIGHTER CONTROL OF ELEVATOR RECALL, OR AS NOTED
	ISOLATOR MODULE
	OUTPUT RELAY, FUNCTION AS INDICATED
	CONTROL MODULE
	MONITOR MODULE
	MAGNETIC DOOR HOLDER AND RELEASING DEVICE ("HOLD OPEN")
	FIRE SUPPRESSION RELEASING STATION
	FIRE SUPPRESSION ABORT STATION
SINGLE LINE DIAGRAM	
	AIR CIRCUIT BREAKER
	MOLDED CASE CIRCUIT BREAKER
	DISCONNECT (UNFUSED)
	FUSE
	METERING CABINET
	TRANSFORMER
	BUS DUCT
	GENERATOR
	AUTOMATIC TRANSFER SWITCH
	AUTOMATIC TRANSFER SWITCH COMPLETE WITH SINGLE SIDED BYPASS ISOLATION
	AUTOMATIC TRANSFER SWITCH COMPLETE WITH SINGLE SIDED BYPASS ISOLATION
ATS	AUTOMATIC TRANSFER SWITCH
C	CONTACTOR
DP	DISTRIBUTION PANELBOARD
LP	LIGHTING PANELBOARD
MCB	MOBILE CONNECTION BOX
MCC	MOTOR CONTROL CENTRE
MTS	MANUAL TRANSFER SWITCH
PP	POWER PANELBOARD
RP	RECEPTACLE PANELBOARD
SPD	SURGE PROTECTIVE DEVICE
STS	STATIC TRANSFER SWITCH
SWBD	SWITCHBOARD
TX	TRANSFORMER
UPS	UNINTERRUPTIBLE POWER SUPPLY
THIS LEGEND IS GENERIC. ALL SYMBOLS LISTED MAY NOT BE APPLICABLE FOR THIS PROJECT. REFER TO FLOOR PLANS TO DETERMINE USED DEVICES AND EQUIPMENT.	

2	ISSUED FOR PERMIT AND TENDER	10/31/2025
1	ISSUED FOR 90% CD - CLIENT REVIEW	10/09/2025

No.	ISSUED/REVISED	DATE
-----	----------------	------

Henry St H.S. Culinary Classroom Renovation

600 Henry St, Whitby, ON L1N 1L4

Electrical Legend & Sheet List



Scale: 1 : 1

Project Number: ED-25-052

Drawn By: Author

Checked By: Checker

E-001





ALL DRAWINGS, SPECIFICATIONS, RELATED DOCUMENTS AND DESIGN ARE THE COPYRIGHT PROPERTY OF THE ARCHITECT AND MUST BE RETURNED UPON REQUEST. REPRODUCTION OF THE DRAWINGS, SPECIFICATIONS, RELATED DOCUMENTS AND DESIGN IN WHOLE OR IN PART IS STRICTLY FORBIDDEN WITHOUT THE ARCHITECT'S WRITTEN PERMISSION. THIS DRAWING SHALL NOT BE USED FOR CONSTRUCTION PURPOSES UNLESS COUNTERSIGNED.



No.	ISSUED/REVISED	DATE
-----	----------------	------

600 Henry St, Whitby, ON L1N 1L4

Scale: N.T.S.

Project Number:

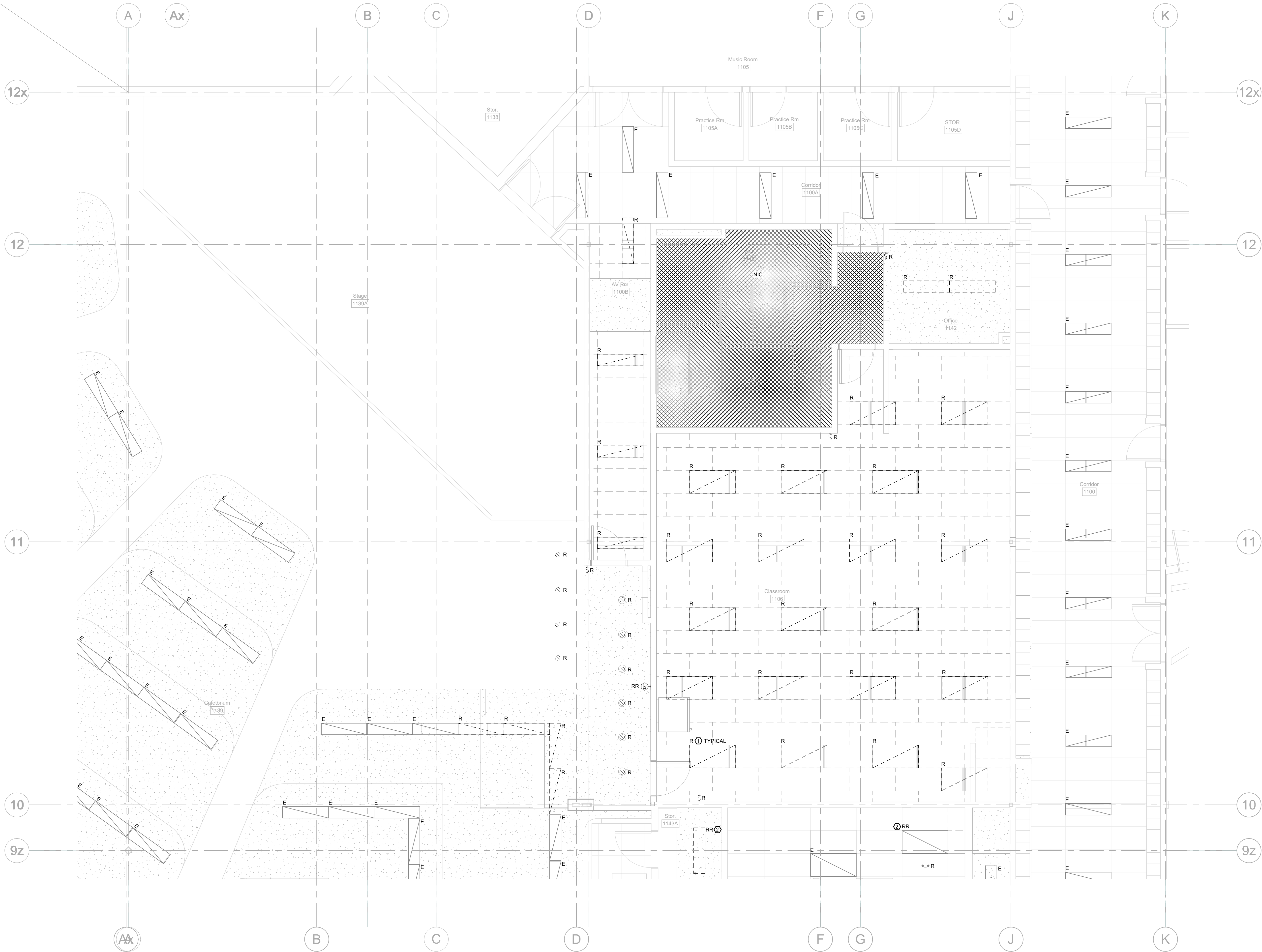
Drawn By:  
Author

Checked By:  
Checker



# E-002



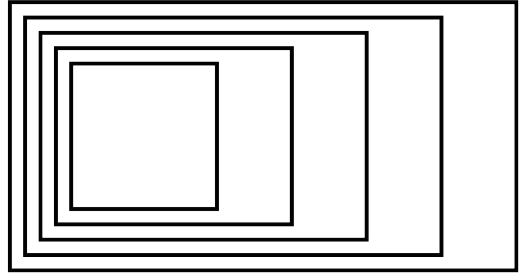


### GENERAL NOTES

- THIS DRAWING IS ISSUED TO SHOW SCOPE OF WORK ONLY. THE CONTRACTOR MUST PERFORM A SITE INSPECTION (INCLUDING CEILING SPACES) DURING THE BID PERIOD AND ENSURE THAT ALL WORK THAT IS VISIBLE IS INCLUDED IN THE DEMOLITION SCOPE OF WORK. ALL EXISTING SERVICES THAT PASS THROUGH THE RENOVATION AREA (UNLESS OBSOLETE) ARE TO BE MAINTAINED, PROTECTED AND/OR RELOCATED TO SUIT THE SCOPE OF WORK.
- COORDINATE DISCONNECTION OF EXISTING FEEDERS TO EXISTING MECHANICAL EQUIPMENT BEING REMOVED WITH MECHANICAL CONTRACTOR ON SITE.
- COORDINATE SHUT DOWN OF ANY EXISTING ELECTRICAL SERVICES WITH ODSB REPRESENTATIVES AND THE SCHOOL PRIOR TO DE-ENERGIZING ANY EXISTING BREAKERS SERVING EQUIPMENT BEING REMOVED AND REPLACED OR RELOCATED.
- CONTRACTOR SHALL BE RESPONSIBLE TO REMOVE AND REINSTALL EXISTING CORRIDOR AND/OR CLASSROOM CEILING TILES TO ACCOMMODATE REMOVAL OF EXISTING ROOF MOUNTED EQUIPMENT FEEDERS. ANY CEILING TILES DAMAGED AS PART OF THE CONTRACTOR'S WORK SHALL BE REPLACED WITH NEW AT CONTRACTOR'S COST.
- EXISTING RECEPTACLES AND OTHER EQUIPMENT DENOTED WITH "R" TO BE REMOVED IN ITS ENTIRETY INCLUDING ALL ASSOCIATED WIRING BACK TO SOURCE JUNCTION BOX IN CEILING. BE RESPONSIBLE TO MAINTAIN THE DOWNSTREAM CONTINUITY OF OTHER DEVICES CONNECTED TO THE SAME BRANCH CIRCUIT. PROVIDE BLANK STAINLESS STEEL COVERPLATE OVER EXISTING BACKBOX AND ABANDON ANY EXISTING CONCEALED CONDUIT WITHIN EXISTING WALL CONSTRUCTION.

### KEY NOTES

- EXISTING LUMINAIRE TO BE REMOVED IN ITS ENTIRETY. BE RESPONSIBLE TO MODIFY EXISTING LIGHTING BRANCH CIRCUIT AS REQUIRED TO ACCOMMODATE REMOVAL OF LUMINAIRE WHILE MAINTAINING DOWNSTREAM CONTINUITY OF OTHER LUMINAIRES CONNECTED TO THE SAME BRANCH CIRCUIT. RETAIN EXISTING CIRCUIT WIRING FOR CONNECTION TO NEW LUMINAIRE.
- EXISTING LUMINAIRE TO BE TEMPORARILY DISCONNECTED AND REMOVED FROM CEILING TO ACCOMMODATE RENOVATION WORK WITHIN THIS SPACE. ONCE WORK IS COMPLETE, BE RESPONSIBLE TO REINSTALL LUMINAIRE IN SAME LOCATION AND RECONNECT TO EXISTING POWER SUPPLY. POWER SUPPLY SHALL BE SAFELY COILED WITHIN CEILING SPACE THROUGHOUT THE PERIOD OF TIME THE LUMINAIRE IS DISCONNECTED AND STORED ON SITE.



## GOW HASTINGS ARCHITECTS

275 SPADINA ROAD  
TORONTO, ONTARIO M5R 2V3  
416-920-0031  
GOWHASTINGS.COM

ALL DRAWINGS, SPECIFICATIONS, RELATED DOCUMENTS AND DESIGN ARE THE COPYRIGHT PROPERTY OF THE ARCHITECT AND MUST BE RETURNED UPON REQUEST. REPRODUCTION OF THE DRAWINGS, SPECIFICATIONS, RELATED DOCUMENTS AND DESIGN IN WHOLE OR IN PART IS STRICTLY FORBIDDEN WITHOUT THE ARCHITECT'S WRITTEN PERMISSION. THIS DRAWING SHALL NOT BE USED FOR CONSTRUCTION PURPOSES UNLESS COUNTERSIGNED.



250 ROWNTREE DAIRY RD, WOODBRIDGE, ON  
TEL: 905-507-0800  
WEB: WWW.QUASARG.COM



2 ISSUED FOR PERMIT AND TENDER 10/31/2025  
1 ISSUED FOR 90% CD - CLIENT REVIEW 10/09/2025

No.	ISSUED/REVISED	DATE
-----	----------------	------

Henry St H.S. Culinary Classroom Renovation

600 Henry St. Whitby, ON L1N 1L4

### Electrical Demolition Plan - Lighting



Scale: 1 : 50

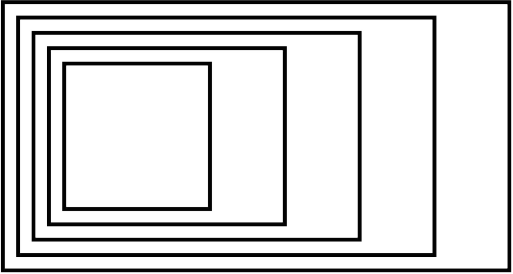
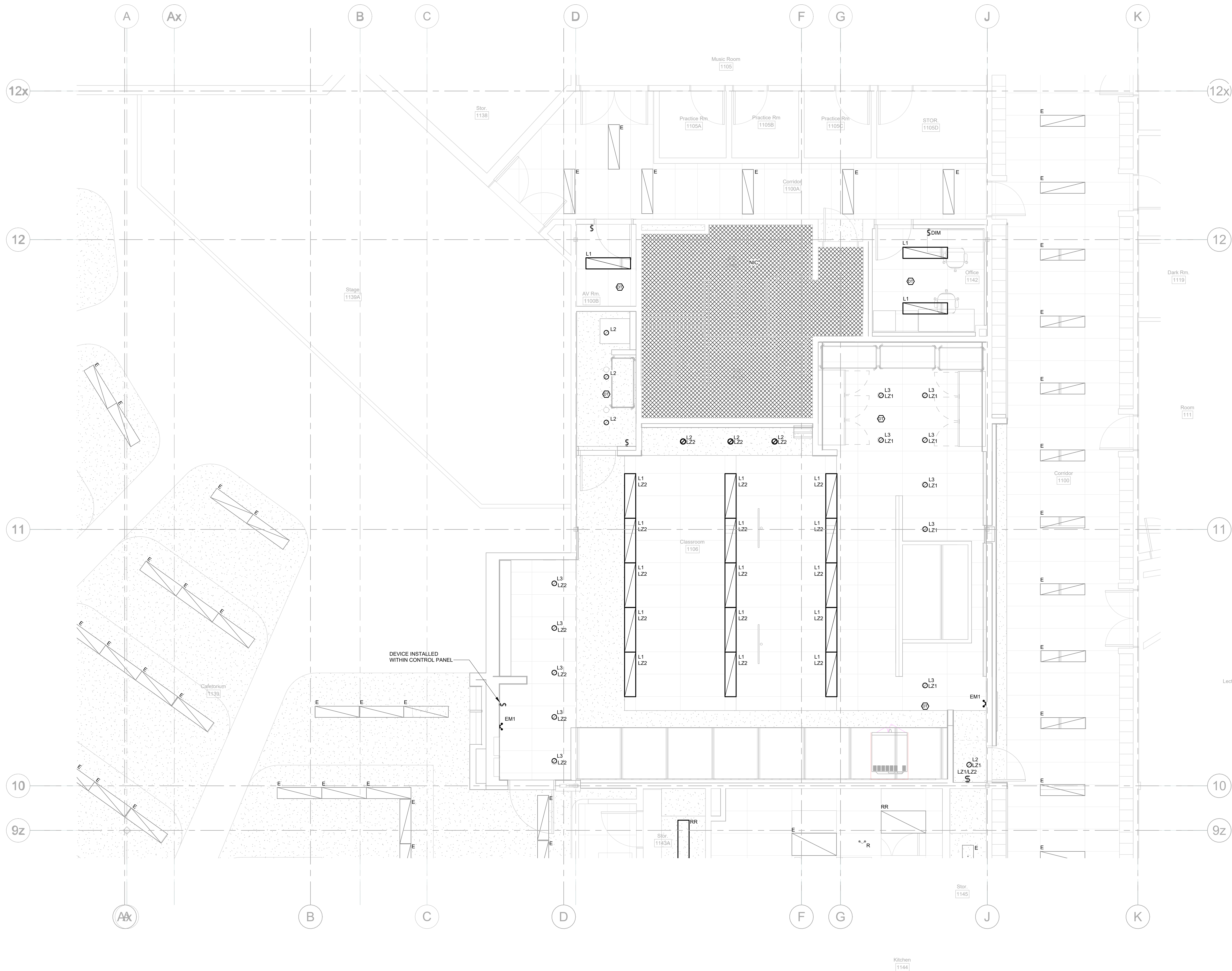
Project Number:  
ED-25-052

Drawn By:  
Author

Checked By:  
Checker

# E-101





## GOW HASTINGS ARCHITECTS

275 SPADINA ROAD  
TORONTO, ONTARIO M5R 2V3  
416-922-0031  
GOWHASTINGS.COM

ALL DRAWINGS, SPECIFICATIONS, RELATED DOCUMENTS AND DESIGN ARE THE COPYRIGHT PROPERTY OF THE ARCHITECT AND MUST BE RETURNED UPON REQUEST. REPRODUCTION OF THE DRAWINGS, SPECIFICATIONS, RELATED DOCUMENTS AND DESIGN IN WHOLE OR IN PART IS STRICTLY FORBIDDEN WITHOUT THE ARCHITECT'S WRITTEN PERMISSION. THIS DRAWING SHALL NOT BE USED FOR CONSTRUCTION PURPOSES UNLESS COUNTERSIGNED.



250 ROWNTREE DAIRY RD., WOODBRIDGE, ON  
TEL: 905-507-0800  
WEB: WWW.QUASARCG.COM



2 ISSUED FOR PERMIT AND TENDER 10/31/2025  
1 ISSUED FOR 90% CD - CLIENT REVIEW 10/09/2025

No.	ISSUED/REVISED	DATE
-----	----------------	------

Henry St H.S. Culinary Classroom Renovation

600 Henry St. Whitby, ON L1N 1L4

### Electrical New Work Plan - Lighting



Scale: 1 : 50	
Project Number: ED-25-052	
Drawn By: Author	
Checked By: Checker	

# E-151

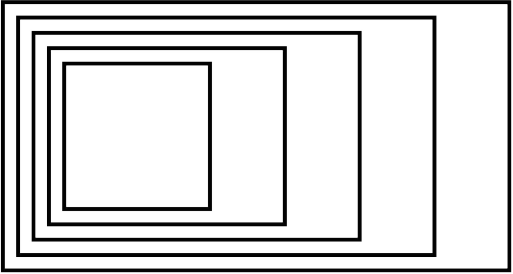




1. THIS DRAWING IS ISSUED TO SHOW SCOPE OF WORK ONLY. THE CONTRACTOR MUST PERFORM A SITE INSPECTION INCLUDING CEILING SPACES DURING THE BID PERIOD AND ENSURE THAT ALL WORK THAT IS VISIBLE IS INCLUDED IN THE DEFINED SCOPE OF WORK. ALL EXISTING SERVICES THAT PASS THROUGH THE RENOVATION AREA (UNLESS OBSOLETE) ARE TO REMAIN. ALL EXISTING PROTECTED AND/OR RELOCATED TO SUIT THE SCOPE OF WORK.
2. COORDINATE DISCONNECTION OF EXISTING FEEDERS TO EXISTING MECHANICAL EQUIPMENT BEING REMOVED BY MECHANICAL CONTRACTOR ON SITE.
3. COORDINATE SHUT DOWN OF ANY EXISTING ELECTRICAL SERVICES WITH DDBS REPRESENTATIVES AND THE SCHOOL PRIOR TO DE-ENERGIZING AND REMOVE OR RELOCATE SERVING EQUIPMENT BEING REMOVED AND REPLACED OR RELOCATED.
4. CONTRACTOR SHALL BE RESPONSIBLE TO REMOVE AND REINSTALL EXISTING CORRIDOR AND/OR CLASSROOM CEILING TILES TO ACCOMMODATE RELOCATED OR ROOF MOUNTED EQUIPMENT FEEDERS. ANY CEILING TILES DAMAGED AS PART OF THE CONTRACTOR'S WORK SHALL BE REPLACED WITH NEW AT CONTRACTOR'S COST.

## KEY NOTES

1. EXISTING RECEPTACLES AND OTHER EQUIPMENT DENOTED WITH "R" TO BE REMOVED IN THEIR ENTIRETY. BE RESPONSIBLE TO PULL BACK AND REMOVE EXISTING WIRING AND CONDUIT TO SOURCE. BE RESPONSIBLE TO MAINTAIN THE DOWNSTREAM CONTINUITY OF EXISTING DEVICES THAT MAY BE CONNECTED TO THE SAME BRANCH CIRCUIT.



**GOW HASTINGS  
ARCHITECTS**

275 SPADINA ROAD  
TORONTO ONTARIO M5R 2V3  
416-920-0031  
GOWHASTINGS.COM

ALL DRAWINGS, SPECIFICATIONS, RELATED DOCUMENTS AND DESIGN ARE THE COPYRIGHT PROPERTY OF THE ARCHITECT AND MUST BE RETURNED UPON REQUEST. REPRODUCTION OF THE DRAWINGS, SPECIFICATIONS, RELATED DOCUMENTS AND DESIGN IN WHOLE OR IN PART IS STRICTLY FORBIDDEN WITHOUT THE ARCHITECT'S WRITTEN PERMISSION. THIS DRAWING SHALL NOT BE USED FOR CONSTRUCTION PURPOSES UNLESS COUNTERSIGNED.



250 ROWNTREE DAIRY RD, WOODBRIDGE, ON  
TEL: 905-507-0800  
WEB: WWW.QUASARCG.COM



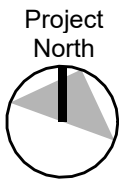
2	ISSUED FOR PERMIT AND TENDER	10/31/2025
1	ISSUED FOR 90% CD - CLIENT REVIEW	10/09/2025

No.	ISSUED/REVISED	DATE
-----	----------------	------

## Henry St H.S. Culinary Classroom Renovation

600 Henry St, Whitby, ON L1N 1L4

## Electrical Demolition Plan - Level 1 - Power & Systems



Scale: 1 : 50

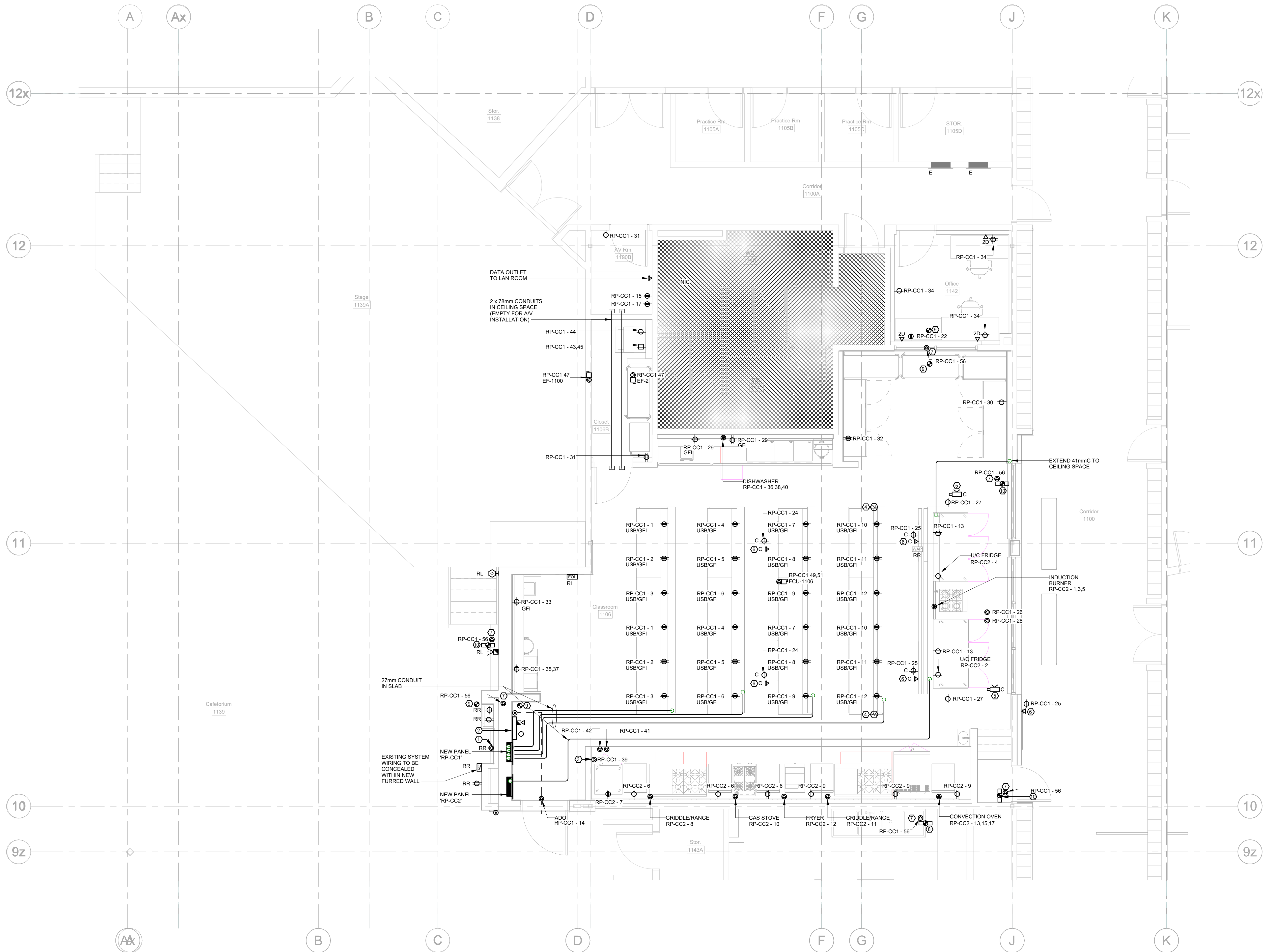
Project Number:  
ED-25-052

Drawn By:  
Author

Checked By:  
Checker

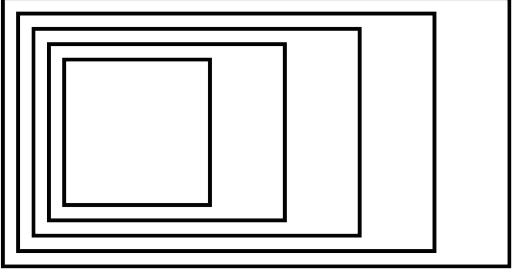
# E-201





KEY NOTES

- DIRECT CONNECTION TO BE PROVIDED FOR RELOCATED WATER BOTTLE FILLING STATION. REFER TO DETAIL #8/E-302 AND SPECIFICATION.
- PROVIDE NEW CLASSROOM CONTROL PANEL. REFER TO DETAIL #8/E-302 AND SPECIFICATION.
- PROVIDE DIRECT CONNECTION FOR FIRE SUPPRESSION SYSTEM.
- PA SPEAKER IN CEILING. SUPPLIED AND INSTALLED BY OTHERS.
- DEMO STATION RECORDING CAMERA. SUPPLIED AND INSTALLED BY OTHERS. ELECTRICAL CONTRACTOR TO PROVIDE CAT 6A CABLE TO EXTEND FROM CAMERA INTO AV ROOM. INCLUDE FOR ALL REQUIRED CABLING SUPPORTS IN CEILING, AND COIL 3m LENGTH OF CABLE AT CAMERA END, AND WITHIN AV ROOM.
- NEW DATA OUTLET. SUPPLIED AND INSTALLED BY ELECTRICAL CONTRACTOR. BE RESPONSIBLE TO EXTEND CAT 6A CABLE FROM OUTLET INTO AV ROOM AND COIL A 3m LENGTH OF CABLE WITHIN AV ROOM FOR FUTURE TERMINATIONS.
- CONNECTION TO MECHANICAL SMOKE/FIRE DAMPER. FOR BRANCH CIRCUIT INDICATED, EXTEND 2#12 + GROUND IN 21mm CONDUIT FROM ASSOCIATED BREAKER IN PANEL BOARD TO DAMPER LOCATION AND CONNECT COMPLETE.
- DUCT MOUNTED SMOKE DETECTOR TO BE INSTALLED WITHIN SUPPLY OR RETURN DUCT AND CONNECTED TO HORIZONTAL SMOKE/FIRE DAMPER AT FLOOR LEVEL. DETECTOR TO BE INSTALLED WITHIN 1500mm OF DAMPER PER DETAIL #5/E-304.
- SPOT TYPE OR DUCT MOUNTED SMOKE DETECTOR TO BE INSTALLED WITHIN CEILING SPACE AND CONNECTED TO SMOKE/FIRE DAMPER IN TRANSFER AIR DUCT. DETECTOR TO BE INSTALLED WALL OR CEILING MOUNTED WITHIN 1500mm OF DAMPER.
- DUCT MOUNTED SMOKE DETECTOR INSTALLED WITHIN SUPPLY OR RETURN DUCT AND CONNECTED TO VERTICAL SMOKE/FIRE DAMPER. DETECTOR TO BE INSTALLED WITHIN 1500mm OF DAMPER PER DETAIL #5/E-304.



GOW HASTINGS ARCHITECTS

275 SPADINA ROAD  
TORONTO, ONTARIO M5R 2V3  
416-920-0031  
GOWHASTINGS.COM

ALL DRAWINGS, SPECIFICATIONS, RELATED DOCUMENTS AND DESIGN ARE THE COPYRIGHT PROPERTY OF THE ARCHITECT AND MUST BE RETURNED UPON REQUEST. REPRODUCTION OF THE DRAWINGS, SPECIFICATIONS, RELATED DOCUMENTS AND DESIGN IN WHOLE OR IN PART IS STRICTLY FORBIDDEN WITHOUT THE ARCHITECT'S WRITTEN PERMISSION. THIS DRAWING SHALL NOT BE USED FOR CONSTRUCTION PURPOSES UNLESS COUNTERSIGNED.



250 ROWNTREE DAIRY RD, WOODBRIDGE, ON  
TEL: 905-507-0800  
WEB: WWW.QUASARG.COM



2 ISSUED FOR PERMIT AND TENDER 10/31/2025  
1 ISSUED FOR 90% CD - CLIENT REVIEW 10/09/2025

No.	ISSUED/REVISED	DATE
-----	----------------	------

Henry St H.S. Culinary Classroom Renovation

600 Henry St. Whitby, ON L1N 1L4

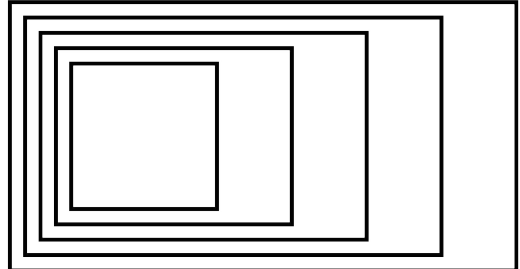
Electrical New Work Plan - Level 1 - Power & Systems



Scale: 1 : 50	
Project Number: ED-25-052	
Drawn By: Author	
Checked By: Checker	

E-251





# GOW HASTINGS ARCHITECTS

275 SPADINA ROAD  
TORONTO, ONTARIO M5R 2V3  
416-920-0031  
GOWHASTINGS.COM

ALL DRAWINGS, SPECIFICATIONS, RELATED DOCUMENTS AND DESIGN ARE THE COPYRIGHT PROPERTY OF THE ARCHITECT AND MUST BE RETURNED UPON REQUEST. REPRODUCTION OF THE DRAWINGS, SPECIFICATIONS, RELATED DOCUMENTS AND DESIGN IN WHOLE OR IN PART IS STRICTLY FORBIDDEN WITHOUT THE ARCHITECT'S WRITTEN PERMISSION. THIS DRAWING SHALL NOT BE USED FOR CONSTRUCTION PURPOSES UNLESS COUNTERSIGNED.



250 ROWNTREE DAIRY RD, WOODBRIDGE, ON  
TEL: 905-507-0800  
WEB: WWW.QUASARGC.COM



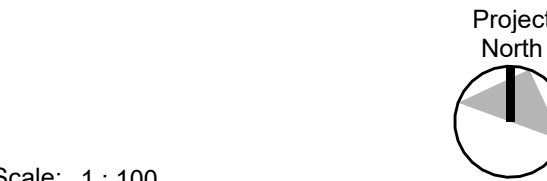
2 ISSUED FOR PERMIT AND TENDER 10/31/2025  
1 ISSUED FOR 90% CD - CLIENT REVIEW 10/09/2025

No.	ISSUED/REVISED	DATE
-----	----------------	------

Henry St H.S. Culinary Classroom Renovation

600 Henry St, Whitby, ON L1N 1L4

## Electrical Plans - Level 2 - Power and Systems



Scale: 1 : 100

Project Number:  
ED-25-052

Drawn By:  
Author

Checked By:  
Checker

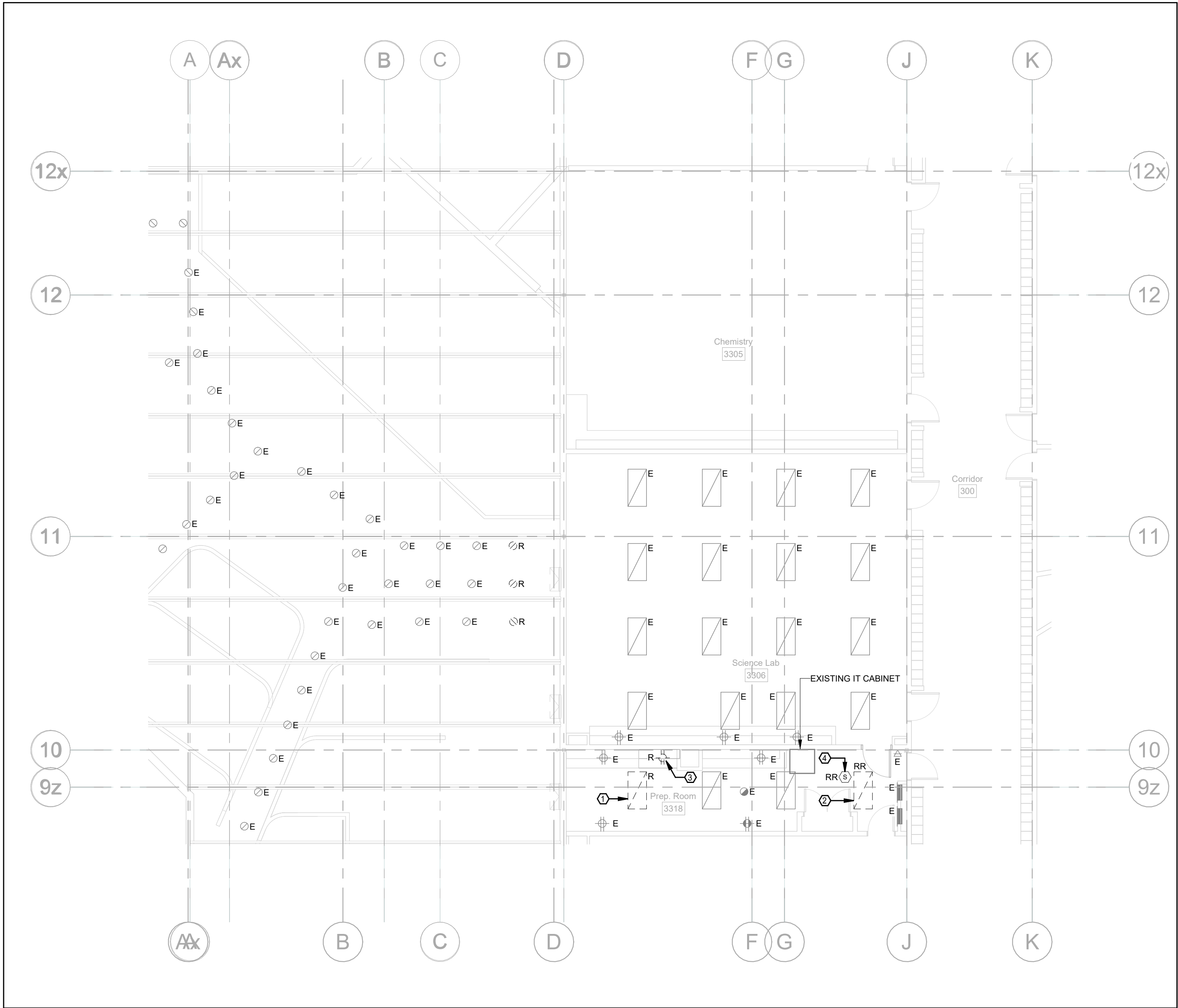
# E-252

### GENERAL NOTES

- THIS DRAWING IS ISSUED TO SHOW SCOPE OF WORK ONLY. THE CONTRACTOR MUST PERFORM A SITE INSPECTION (INCLUDING CEILING SPACES) DURING THE BID PERIOD AND ENSURE THAT ALL WORK THAT IS VISIBLE IS INCLUDED IN THE DEMOLITION SCOPE OF WORK. ALL EXISTING SERVICES THAT PASS THROUGH THE RENOVATION AREA (UNLESS OBSOLETE) ARE TO BE MAINTAINED, PROTECTED AND/OR RELOCATED TO SUIT THE SCOPE OF WORK.
- COORDINATE DISCONNECTION OF EXISTING FEEDERS TO EXISTING MECHANICAL EQUIPMENT BEING REMOVED WITH MECHANICAL CONTRACTOR ON SITE.
- COORDINATE SHUT DOWN OF ANY EXISTING ELECTRICAL SERVICES WITH ODSB REPRESENTATIVES AND THE SCHOOL PRIOR TO DE-ENERGIZING ANY EXISTING BREAKERS SERVING EQUIPMENT BEING REMOVED AND REPLACED OR RELOCATED.
- CONTRACTOR SHALL BE RESPONSIBLE TO REMOVE AND REINSTALL EXISTING CORRIDOR AND/OR CLASSROOM CEILING TILES TO ACCOMMODATE REMOVAL OF EXISTING ROOF MOUNTED EQUIPMENT FEEDERS. ANY CEILING TILES DAMAGED AS PART OF THE CONTRACTOR'S WORK SHALL BE REPLACED WITH NEW AT CONTRACTOR'S COST.

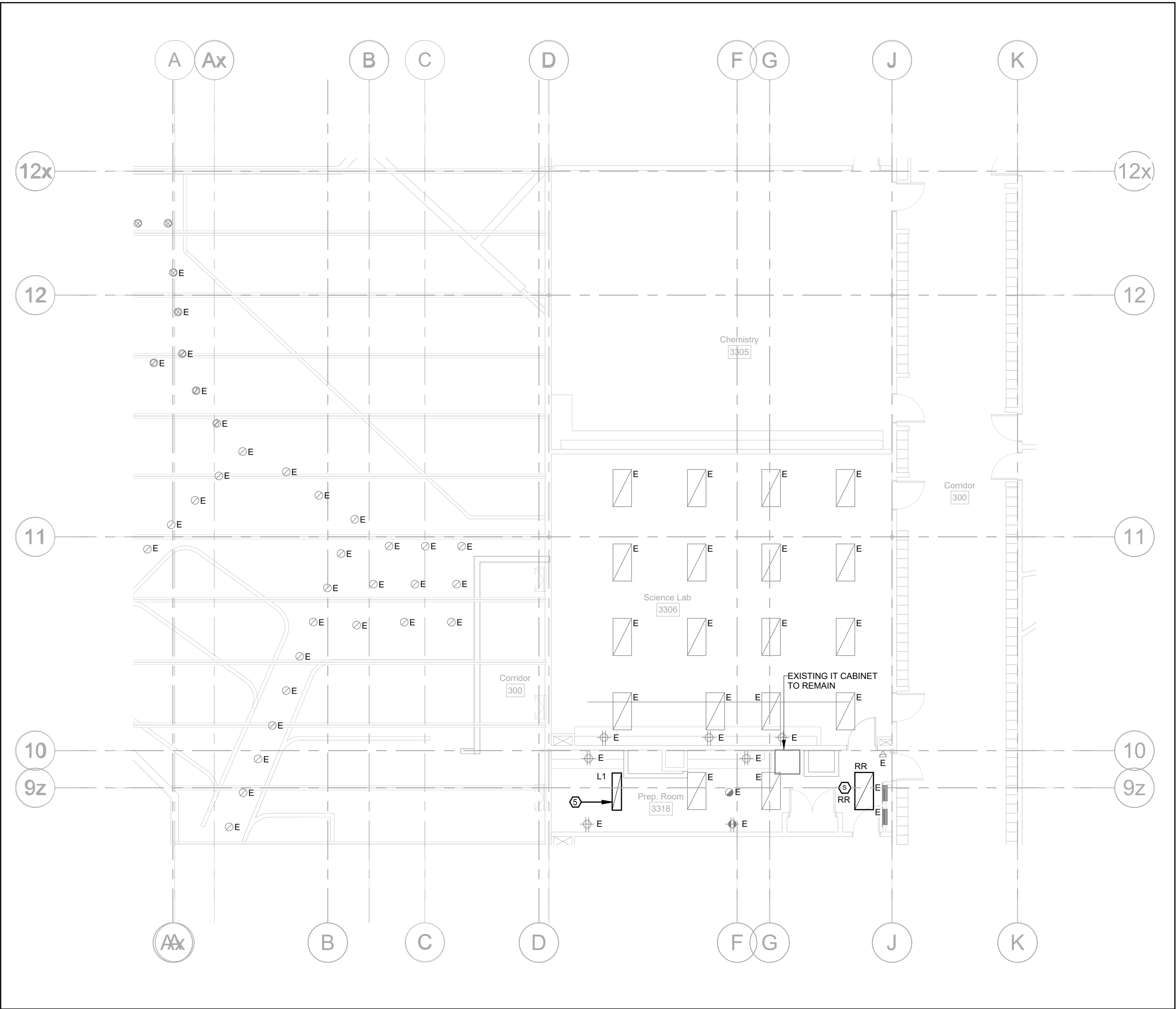
### KEY NOTES

- EXISTING LUMINAIRE TO BE REMOVED IN ITS ENTIRETY. BE RESPONSIBLE TO MODIFY EXISTING LIGHTING BRANCH CIRCUIT AS REQUIRED TO ACCOMMODATE REMOVAL OF LUMINAIRE WHILE MAINTAINING DOWNSTREAM CONTINUITY OF OTHER LUMINAIRES CONNECTED TO THE SAME BRANCH CIRCUIT. RETAIN EXISTING CIRCUIT WIRING FOR CONNECTION TO NEW LUMINAIRE.
- EXISTING LUMINAIRE TO BE TEMPORARILY DISCONNECTED AND REMOVED FROM CEILING THIS SPACE. ONCE WORK IS COMPLETE, BE RESPONSIBLE TO RE-INSTALL LUMINAIRE IN SAME LOCATION AND RECONNECT TO EXISTING POWER SUPPLY. POWER SUPPLY SHALL BE SAFELY COILED WITHIN CEILING SPACE THROUGHOUT THE PERIOD OF TIME THE LUMINAIRE IS DISCONNECTED AND STORED ON SITE.
- EXISTING RECEPTACLE TO BE REMOVED IN ITS ENTIRETY INCLUDING ALL ASSOCIATED WIRING BACK TO SOURCE. JUNCTION BOX IN CEILING. BE RESPONSIBLE TO MAINTAIN THE DOWNSTREAM CONTINUITY OF OTHER DEVICES CONNECTED TO THE SAME BRANCH CIRCUIT. PROVIDE BLANK STAINLESS STEEL COVERPLATE OVER EXISTING BACKBOX AND ABANDON ANY EXISTING CONCEALED CONDUIT WITHIN EXISTING WALL CONSTRUCTION.
- EXISTING PUBLIC ADDRESS SYSTEM SPEAKER TO BE TEMPORARILY DISCONNECTED AND REMOVED FROM CEILING TO ACCOMMODATE RENOVATION WORK WITHIN THIS SPACE. ONCE WORK IS COMPLETE, BE RESPONSIBLE TO REINSTALL SPEAKER IN SAME LOCATION AND RECONNECT TO EXISTING SYSTEM WIRING COMPLETE. TEST AND VERIFY THAT SPEAKER IS FUNCTIONAL UPON COMPLETION OF WORK.
- PROVIDE NEW LUMINAIRE AND CONNECT TO EXISTING LIGHTING BRANCH CIRCUIT COMPLETE. REFER TO ARCHITECTURAL REFLECTED CEILING PLANS FOR EXACT INSTALLATION LOCATION OF LUMINAIRE.



### LEVEL 2 - DEMOLITION

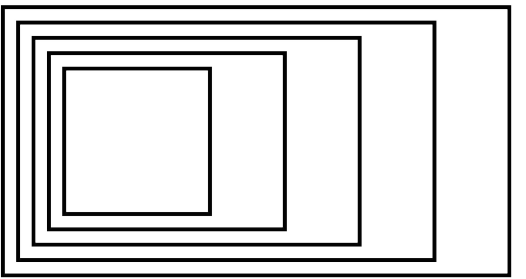
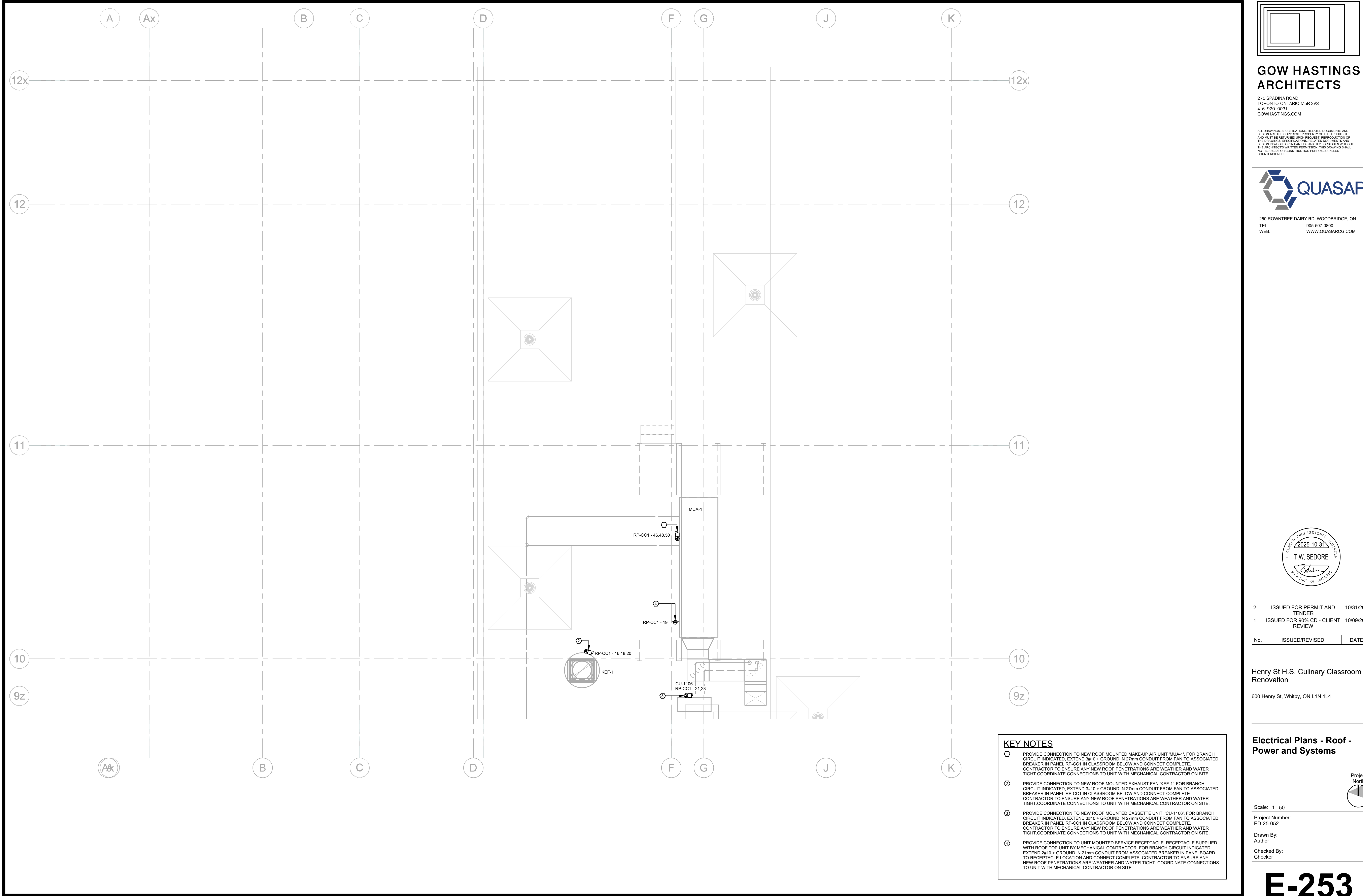
SCALE: 1 : 100



### LEVEL 2 - NEW CONSTRUCTION

SCALE: 1 : 100





**GOW HASTINGS  
ARCHITECTS**

275 SPADINA ROAD  
TORONTO, ONTARIO M5R 2V3  
416-920-0031  
GOWHASTINGS.COM

ALL DRAWINGS, SPECIFICATIONS, RELATED DOCUMENTS AND DESIGN ARE THE COPYRIGHT PROPERTY OF THE ARCHITECT AND MUST BE RETURNED UPON REQUEST. REPRODUCTION OF THE DRAWINGS, SPECIFICATIONS, RELATED DOCUMENTS AND DESIGN IN WHOLE OR IN PART IS STRICTLY FORBIDDEN WITHOUT THE ARCHITECT'S WRITTEN PERMISSION. THIS DRAWING SHALL NOT BE USED FOR CONSTRUCTION PURPOSES UNLESS COUNTERSIGNED.



250 ROWNTREE DAIRY RD, WOODBRIDGE, ON  
TEL: 905-507-0800  
WEB: WWW.QUASARCG.COM



2 ISSUED FOR PERMIT AND TENDER 10/31/2025  
1 ISSUED FOR 90% CD - CLIENT REVIEW 10/09/2025

No.	ISSUED/REVISED	DATE

Henry St H.S. Culinary Classroom Renovation

600 Henry St, Whitby, ON L1N 1L4

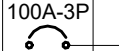
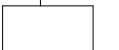
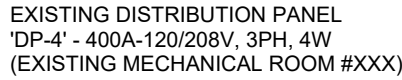
**Electrical Plans - Roof -  
Power and Systems**

Scale: 1 : 50  
Project Number: ED-25-052  
Drawn By: Author  
Checked By: Checker

**E-253**

- KEY NOTES**
- ① PROVIDE CONNECTION TO NEW ROOF MOUNTED MAKE-UP AIR UNIT 'MUA-1'. FOR BRANCH CIRCUIT INDICATED. EXTEND 3/4"Ø + GROUND IN 27mm CONDUIT FROM FAN TO ASSOCIATED BREAKER IN PANEL RP-CC1 IN CLASSROOM BELOW AND CONNECT COMPLETE. CONTRACTOR TO ENSURE ANY NEW ROOF PENETRATIONS ARE WEATHER AND WATER TIGHT.COORDINATE CONNECTIONS TO UNIT WITH MECHANICAL CONTRACTOR ON SITE.
  - ② PROVIDE CONNECTION TO NEW ROOF MOUNTED EXHAUST FAN 'KEF-1'. FOR BRANCH CIRCUIT INDICATED. EXTEND 3/4"Ø + GROUND IN 27mm CONDUIT FROM FAN TO ASSOCIATED BREAKER IN PANEL RP-CC1 IN CLASSROOM BELOW AND CONNECT COMPLETE. CONTRACTOR TO ENSURE ANY NEW ROOF PENETRATIONS ARE WEATHER AND WATER TIGHT.COORDINATE CONNECTIONS TO UNIT WITH MECHANICAL CONTRACTOR ON SITE.
  - ③ PROVIDE CONNECTION TO NEW ROOF MOUNTED CASSETTE UNIT 'CU-1106'. FOR BRANCH CIRCUIT INDICATED. EXTEND 3/4"Ø + GROUND IN 27mm CONDUIT FROM FAN TO ASSOCIATED BREAKER IN PANEL RP-CC1 IN CLASSROOM BELOW AND CONNECT COMPLETE. CONTRACTOR TO ENSURE ANY NEW ROOF PENETRATIONS ARE WEATHER AND WATER TIGHT.COORDINATE CONNECTIONS TO UNIT WITH MECHANICAL CONTRACTOR ON SITE.
  - ④ PROVIDE CONNECTION TO UNIT MOUNTED SERVICE RECEPTACLE. RECEPTACLE SUPPLIED WITH ROOF TOP UNIT BY MECHANICAL CONTRACTOR. FOR BRANCH CIRCUIT INDICATED. EXTEND 2#10 + GROUND IN 21mm CONDUIT FROM ASSOCIATED BREAKER IN PANELBOARD TO RECEPTACLE LOCATION AND CONNECT COMPLETE. CONTRACTOR TO ENSURE ANY NEW ROOF PENETRATIONS ARE WEATHER AND WATER TIGHT. COORDINATE CONNECTIONS TO UNIT WITH MECHANICAL CONTRACTOR ON SITE.





### Branch Panel: RP-CC1

**Location:** Classroom 1106  
**Supply From:** EXISTING 'DP-4'  
**Mounting:** Recessed  
**Enclosure:** Type 1

**Volts:** 120/208 Wye  
**Phases:** 3  
**Wires:** 4

**A.I.C. Rating:**  
**Mains Type:**  
**Mains Rating:** 400 A  
**MCB Rating:** 225 A

**Notes:**

CKT	Circuit Description	QTY	Trip	Poles	A		B		C		Poles	Trip	QTY	Circuit Description	CKT
1	RECEPTACLE	2	20 A	1	1920 VA	1920 VA					1	20 A	2	RECEPTACLE	2
3	RECEPTACLE	2	20 A	1			1920 VA	1920 VA			1	20 A	2	RECEPTACLE	4
5	RECEPTACLE	2	20 A	1					1920 VA	1920 VA	1	20 A	2	RECEPTACLE	6
7	RECEPTACLE	2	20 A	1	1920 VA	1920 VA					1	20 A	2	RECEPTACLE	8
9	RECEPTACLE	2	20 A	1			1920 VA	1920 VA			1	20 A	2	RECEPTACLE	10
11	RECEPTACLE	2	20 A	1					1920 VA	1920 VA	1	20 A	2	RECEPTACLE	12
13	RECEPTACLE	2	15 A	1	360 VA	500 VA					1	20 A	1	ADO	14
15	RECEPTACLE - AV ROOM	1	20 A	1			1920 VA	2005 VA							16
17	RECEPTACLE - AV ROOM	1	20 A	1					1920 VA	2005 VA	3	40 A	1	KEF-1	18
19	RECEPTACLE	1	20 A	1	1920 VA	2005 VA									20
21	CU-1106	1	20 A	2			1664 VA	1920 VA							22
23		3	15 A	1					1664 VA	1440 VA	1	20 A	1	RECEPTACLE	24
25	RECEPTACLE - TVs	2	15 A	1	1440 VA	700 VA					1	15 A	1	EXHAUST HOOD DIRECT CONNECTION 1.B	26
27	RECEPTACLE	2	15 A	1			1440 VA	1440 VA			1	15 A	1	EXHAUST HOOD DIRECT CONNECTION 2.B	28
29	RECEPTACLE	2	15 A	1					1440 VA	1020 VA	1	15 A	1	RECEPTACLE - CABINET	30
31	RECEPTACLE - CLOSET/AV ROOM	2	15 A	1	1440 VA	1440 VA					1	20 A	1	RECEPTACLE - FREEZER	32
33	RECEPTACLE	1	15 A	1			720 VA	1440 VA			1	15 A	3	RECEPTACLE - OFFICE	34
35									2496 VA	3242 VA					36
37	RECEPTACLE - SPLIT	1	15 A	2	0 VA	3242 VA					3	35 A	1	DISHWASHER	38
39	FIRE SUPPRESSION SYSTEM	1	15 A	1			600 VA	3242 VA							40
41	EXHAUST HOOD DIRECT CONNECTION 1.A	1	15 A	1					46 VA	46 VA	1	15 A	1	EXHAUST HOOD DIRECT CONNECTION 2.A	42
43	DRYER	1	30 A	2	2496 VA	180 VA					1	15 A	1	WASHER	44
45							2496 VA	2570 VA							46
47	EF-1100	2	15 A	1					1000 VA	2570 VA	3	30 A	1	MUA-1	48
49	FCU-1106	1	15 A	2	250 VA	2570 VA									50
51							250 VA	0 VA			1	15 A	--	SPARE	52
53	SPARE	--	15 A	1					0 VA	0 VA	1	15 A	--	SPARE	54
55					11447...	1200 VA					1	20 A	6	SFD	56
57	RP-CC2	1	100 A	3			10967...	0 VA			1	20 A	--	SPARE	58
59									11987...	0 VA	1	20 A	--	SPARE	60

**Legend:**

Load Classification	Connected Load	Demand Factor	Estimated Demand	Panel Totals
Other	32811 VA	50.00%	16406 VA	
Receptacle	50568 VA	50.00%	25284 VA	Total Conn. Load: 117779 VA
RP-CC2 - Receptacles	5640 VA	80.00%	4512 VA	Total Est. Demand: 69210 VA
RP-CC2 - Other	28760 VA	80.00%	23008 VA	Total Conn.: 327 A
				Total Est. Demand: 192 A

**Notes:**

1. PANEL SHALL BE ABLE TO ACCEPT 300MCM CABLE TERMINATION

**Branch Panel: RP-CC2**

**Location:** Classroom 1106  
**Supply From:** RP-CC1  
**Mounting:** Recessed  
**Enclosure:** Type 1

**Volts:** 120/208 Wye  
**Phases:** 3  
**Wires:** 4

**A.I.C. Rating:** 25 kA  
**Mains Type:**  
**Mains Rating:** 100 A  
**MCB Rating:**

**Notes:**

CKT	Circuit Description	QTY	Trip	Poles	A	B	C	A	B	C	Poles	Trip	QTY	Circuit Description	CKT
1	INDUCTION COOKER	1	50 A	3	4667 VA			420 VA			1	15 A	1	RECEPTACLE - FRIDGE	2
3						4667 VA		420 VA		1	15 A	1	RECEPTACLE - FRIDGE	4	
5						4667 VA		1440 VA		1	15 A	3	RECEPTACLE	6	
7					RECEPTACLE	1	15 A	1	1920 VA		1440 VA		1	15 A	1
9	RECEPTACLE	3	15 A	1		1440 VA		1440 VA			1	15 A	1	GAS STOVE	10
11	GRIDDLE/RANGE	1	15 A	1			1440 VA		1440 VA		1	20 A	1	FRYER	12
13	CONVECTION OVEN	1	30 A	3	3000 VA			0 VA			1	15 A	--	SPARE	14
15						3000 VA		0 VA		1	15 A	--	SPARE	16	
17						3000 VA		0 VA		1	15 A	--	SPARE	18	
19					SPARE	--	20 A	1	0 VA		0 VA		1	20 A	--
21	SPARE	--	20 A	1		0 VA			0 VA		1	20 A	--	SPARE	22
23	SPACE	--	--	1			--	--		--	1	--	--	SPACE	24
25	SPACE	--	--	1	--			--			1	--	--	SPACE	26
27	SPACE	--	--	1		--		--	--		1	--	--	SPACE	28
29	SPACE	--	--	1			--	--		--	1	--	--	SPACE	30
31	SPACE	--	--	1	--			--			1	--	--	SPACE	32
33	SPACE	--	--	1		--			--		1	--	--	SPACE	34
35	SPACE	--	--	1			--	--		--	1	--	--	SPACE	36
37	SPACE	--	--	1	--			--			1	--	--	SPACE	38
39	SPACE	--	--	1		--			--		1	--	--	SPACE	40
41	SPACE	--	--	1			--	--		--	1	--	--	SPACE	42

**Legend:**

Load Classification	Connected Load	Demand Factor	Estimated Demand	Panel Totals
RP-CC2 - Other	28760 VA	80.00%	23008 VA	
RP-CC2 - Receptacles	5640 VA	80.00%	4512 VA	
				<b>Total Conn. Load:</b> 34400 VA
				<b>Total Est. Demand:</b> 27520 VA
				<b>Total Conn.:</b> 95 A
				<b>Total Est. Demand:</b> 76 A

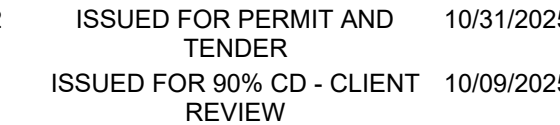
**Notes:**

ITEM

1.001	1	S.S. CLEAN DISHTABLE							
1.001A	1	S.S. Wall Shelving							
1.003	1	S.S. DISHTABLE W/THREE SINKS							
1.003A	1	S.S. Sorting Shelf, Wall Mount							
1.004	2	WASTE BIN W/ DOLLY							
1.006	2	SHELVING, MOBILE 24"x60"							
1.007	1	millwork by millwork div.							
1.008	1	EXHAUST HOOD		5.92 A	120	1	60	DIRECT	
1.008A	1	FIRE SUPPRESSION CABINET		5.00 A	120	1	60	DIRECT	
1.009	1	SHELVING, MOBILE 24"x48"							
1.010	1	s.s.wall							
1.011	4	s.s skeleton wall							
1.012	1	EXHAUST HOOD		0.38 A	120	1	60	DIRECT	
1.012A	1	FIRE SUPPRESSION CABINET		5.00 A	120	1	60	DIRECT	
1.013	1	EXHAUST HOOD		0.38 A	120	1	60	DIRECT	
1.014	1	EXHAUST HOOD		0.25 A	120	1	60	DIRECT	
1.015	4	S.S. PREP TABLE		12.00 A	120	1	60	PLUG	GENERAL PURPOSE RCPT
1.017	1	HOLDING CABINET - FULL SIZE		8.50 A	208	1	60	PLUG	
1.017A	1	S.S. HOOD ENCLOSURE PANEL							
1.018	2	Undermount Sink							
1.019	1	millwork by millwork div.							
1.019A	1	S.S. Wall Shelving							
1.020	1	Cart, Utility							
1.021	1	SHELVING, MOBILE 24"x54"							
1.022	1	stacked washer/dryer		30.00 A	120	0	60	PLUG	NEMA 14-30r
R.000	1	Reach-in SOLID Door Refrigerator		8.50 A	120	1	60	PLUG	NEMA 5-15P
R.001	1	Reach-in SOLID Door FREEZER		12.00 A	120	1	60	PLUG	NEMA 5-20P
R.002	2	Refrigerator, Undercounter		3.50 A	120	1	60	Plug	NEMA 5-15P
R.003	1	INDUCTION COOKER		38.90 A	208	3	60	DIRECT	
R.004	12	S.S WORK TABLE							
R.005	1	ELECTRICAL CONVECTION OVEN		25.00 A	208	3	60	DIRECT	
R.006	2	60" Range - 6 Burners 24" Griddle Broiler - 2 Standard Ovens							
R.007	1	Hot Plates - Gas							
R.008	1	FRYER DUAL TANK							
R.010	1	WORK TABLE							
R.011	1	STAINLESS STEEL EQUIPMENT STAND							
R.012	1	Dishwasher AX-50 220/60/1 M (special pump)		27.00 A	208	3	60	DIRECT	



275 SPADINA ROAD  
TORONTO ONTARIO M5R 2V3  
416-920-0031  
GOWHASTINGS.COM



No.	ISSUED/REVISED	DATE
-----	----------------	------

Henry St H.S. Culinary Classroom  
Renovation

00 Henry St, Whitby, ON L1N 1L4

## Electrical Equipment & Panel Schedules

Scale: 1 : 1

Project Number:  
ED-25-052

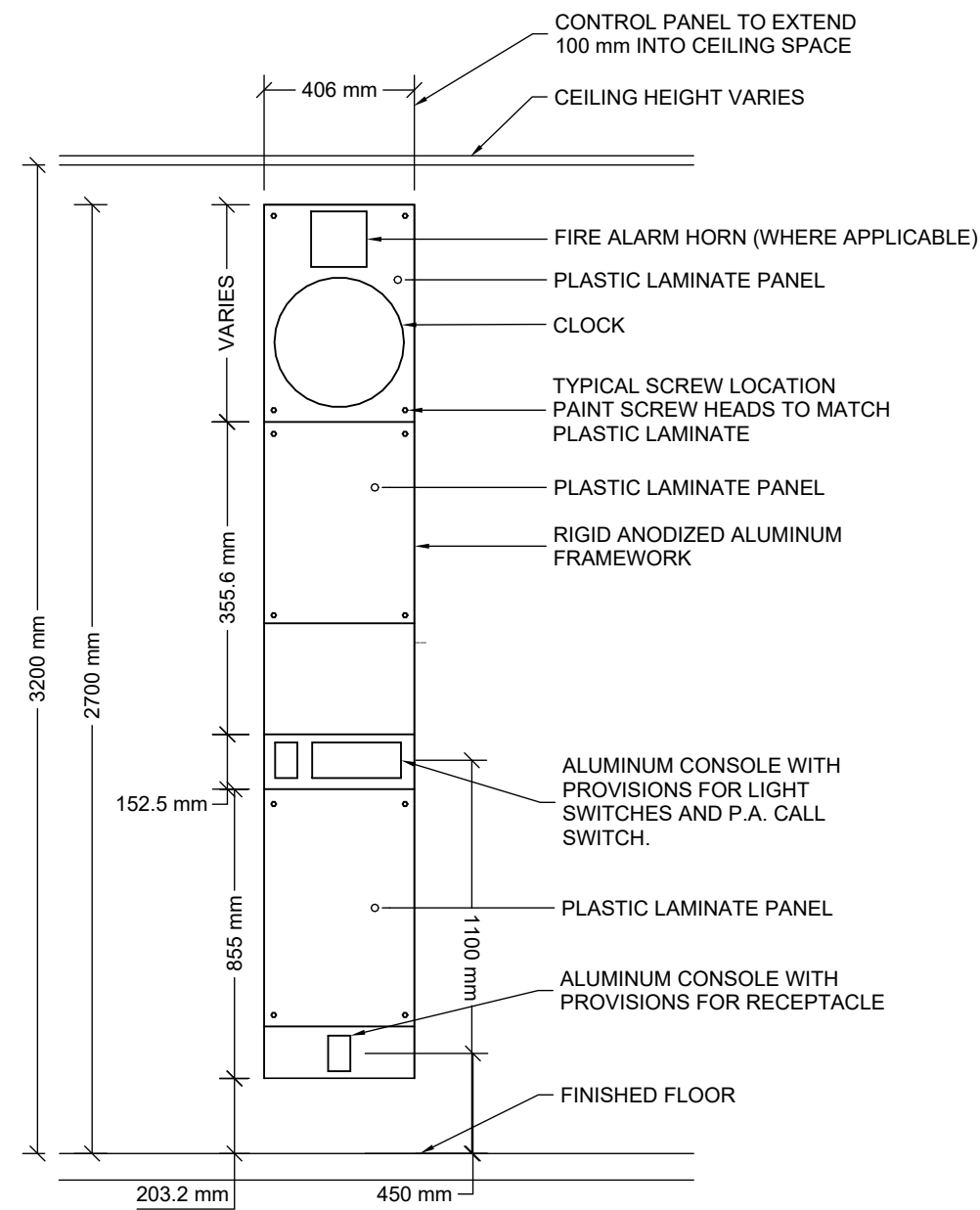
Drawn By:  
Author

---

Checked By  
Checker

# E-301

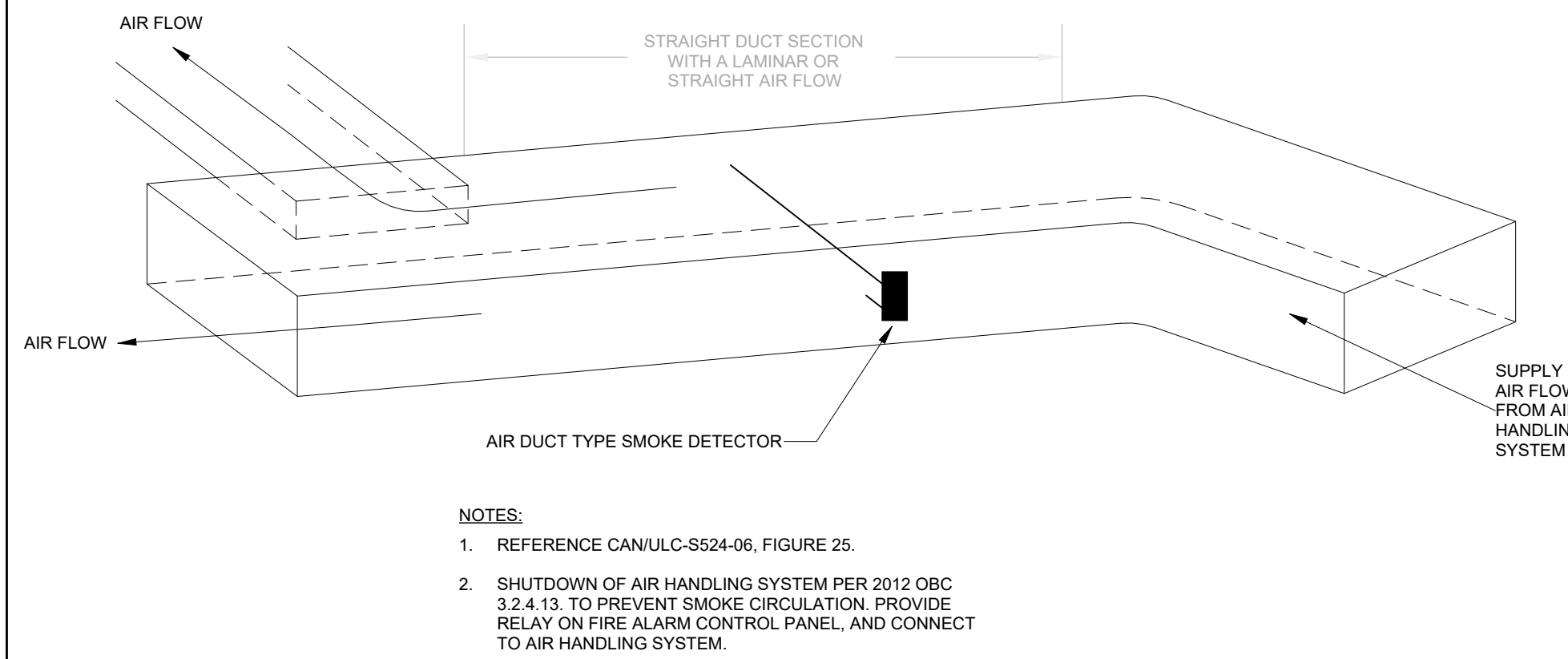
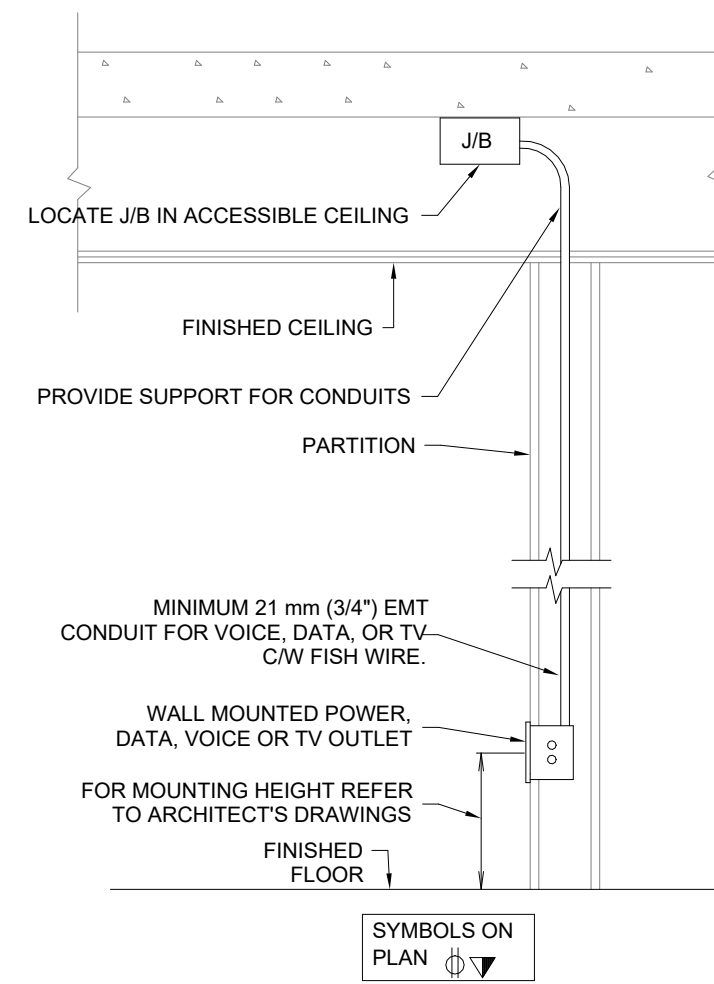




MODULAR CONTROL PANELS SHALL BE SUPPLIED BY INTERSPEC SYSTEMS LIMITED - "CLASSMATE" MODEL CONTROL PANEL OR EQUIVALENT

NOTES:

- REFER TO FLOOR PLANS FOR EXACT NUMBER AND CONFIGURATION OF CONTROL MODULES DEPENDING ON ITS LOCATIONS.
- COORDINATE ALL DEVICE LOCATIONS WITH ARCHITECTURAL.
- MODULAR CONTROL PANELS ARE SUPPLIED AND INSTALLED BY THE ELECTRICAL CONTRACTOR, INCLUDING PROVISION OF ALL DEVICES, WIRING, ETC.



## MODULAR CLASSROOM CONTROL PANEL

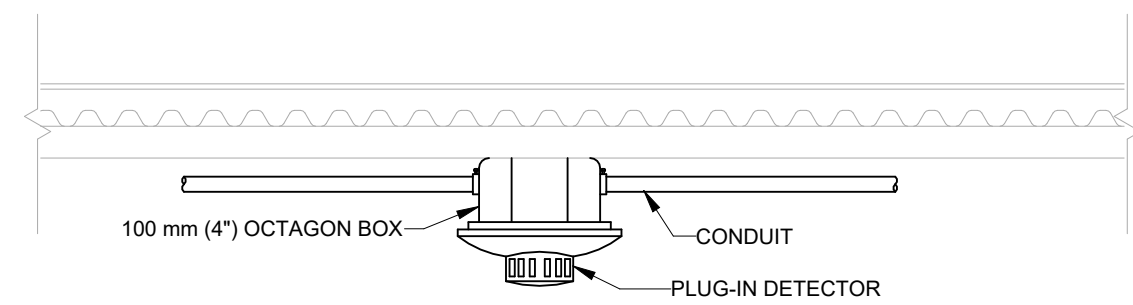
SCALE: N.T.S.

## WALL MOUNTED OUTLET BOX WALL - RECESSED - FINISHED CEILING

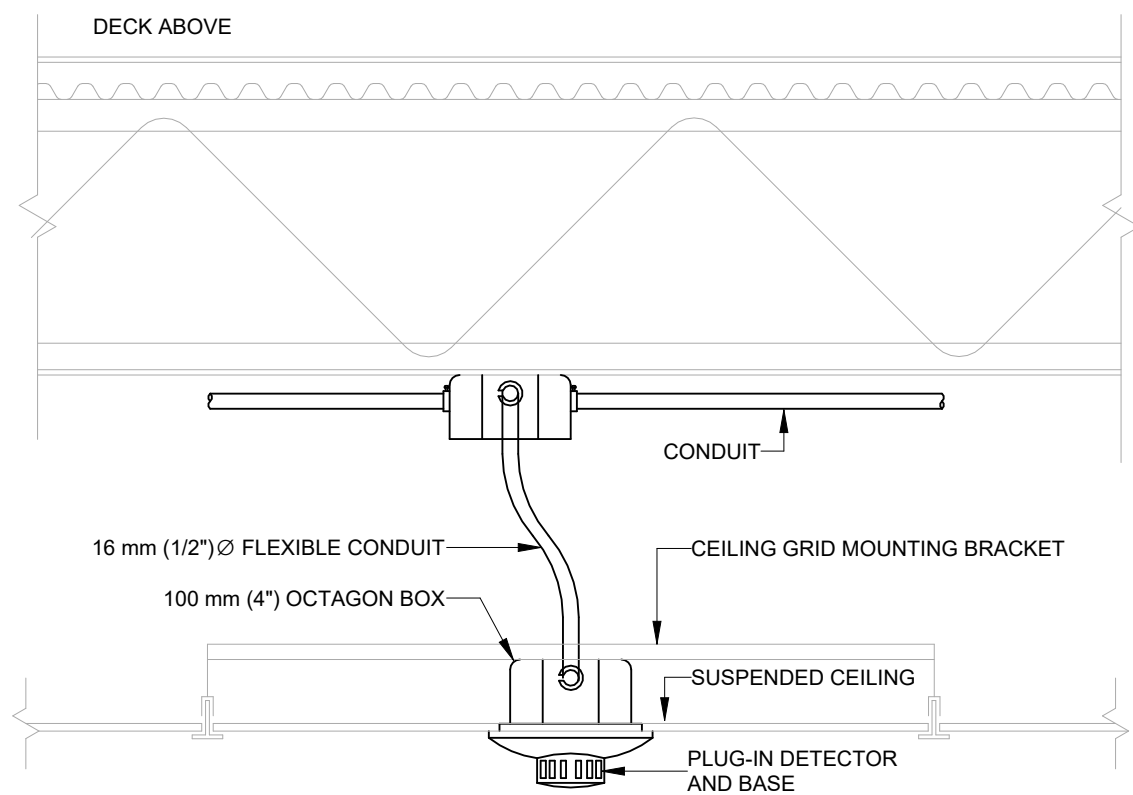
SCALE: N.T.S.

## DUCT SMOKE DETECTION SENSOR INSTALLATION

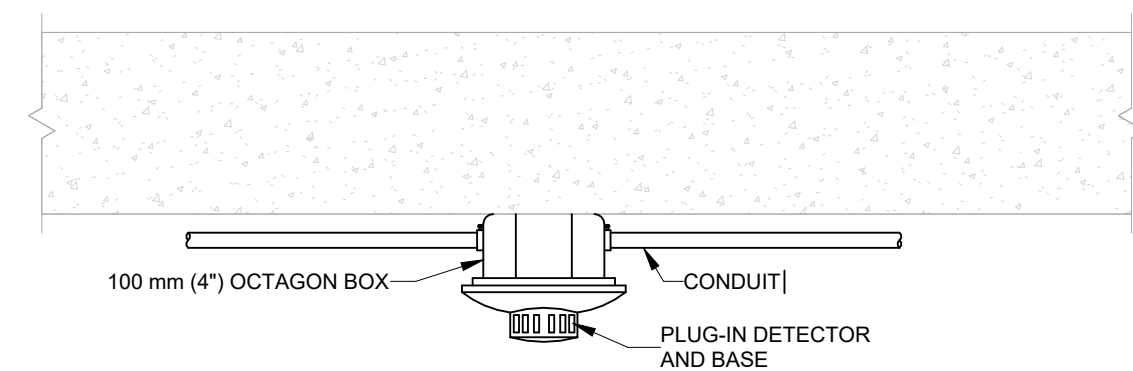
SCALE: N.T.S.



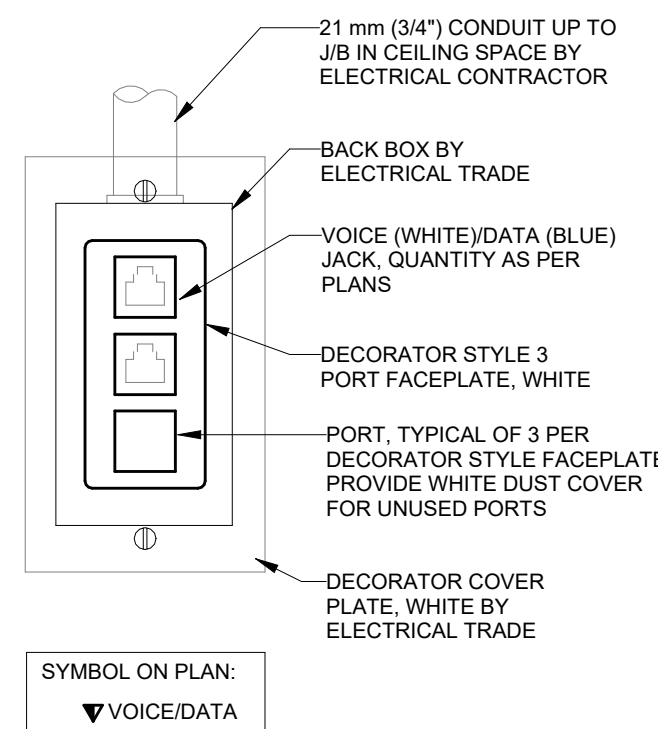
### CEILING MOUNTED (SURFACE DECK)



### SUSPENDED CEILING MOUNTED

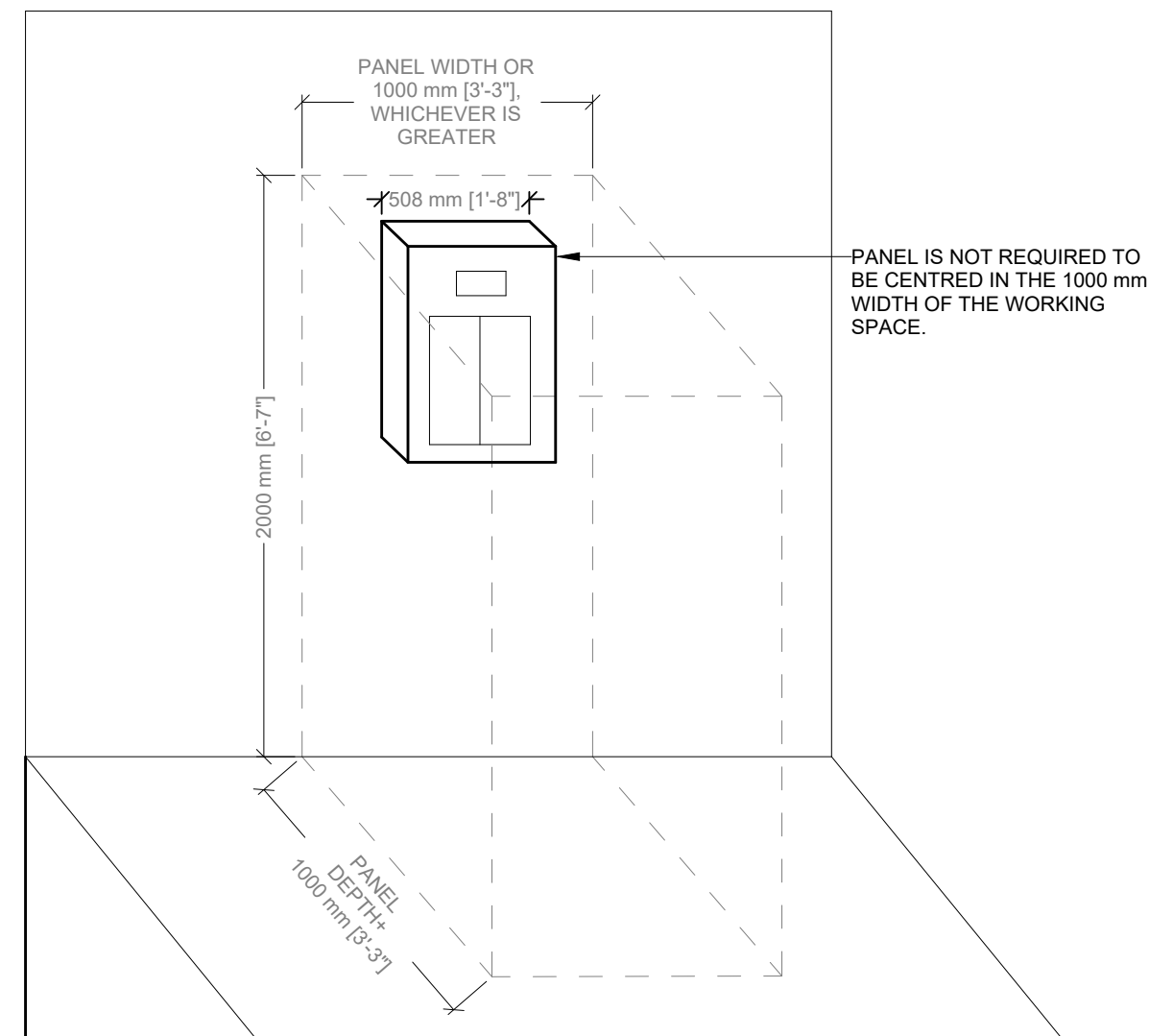


### CEILING MOUNTED (SURFACE SLAB)



## TYPICAL VOICE AND DATA OUTLET

SCALE: N.T.S.

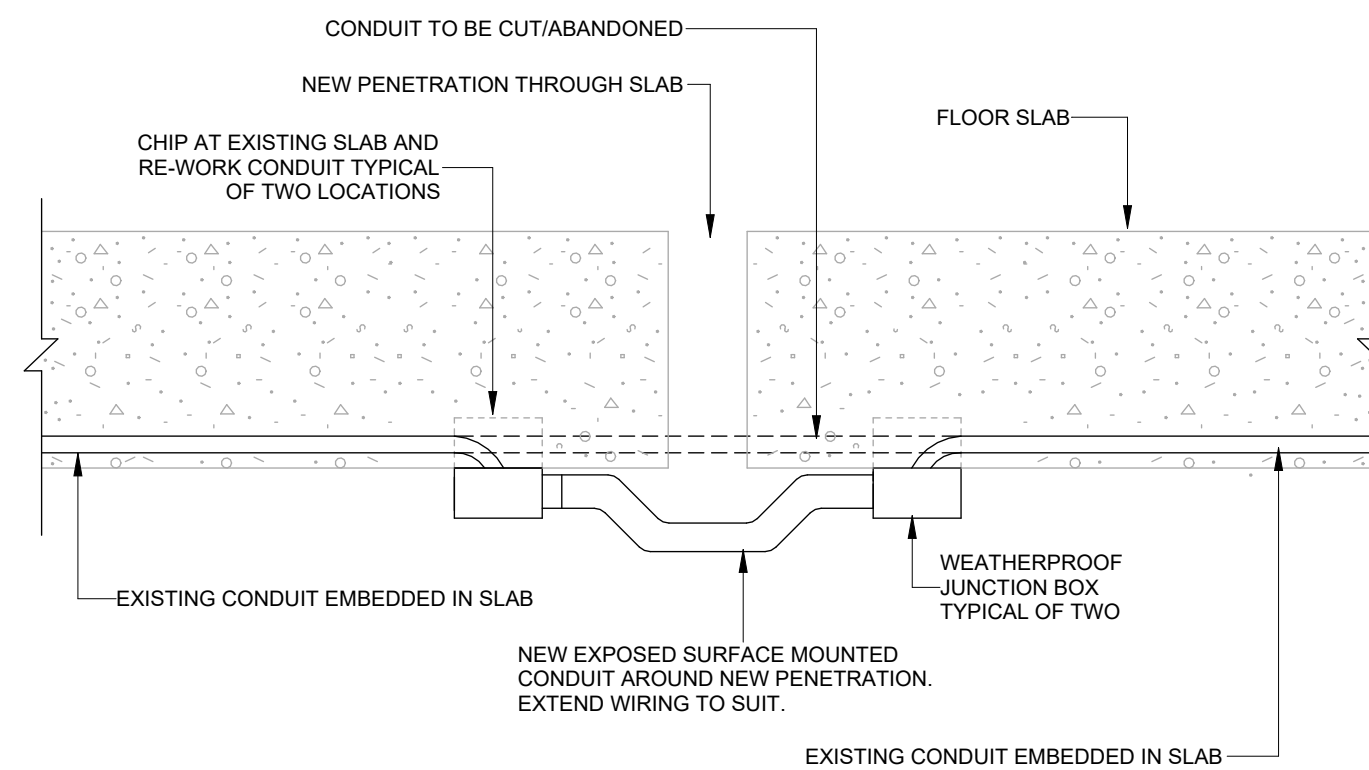


REFERENCES:

- 2018 ONTARIO ELECTRICAL SAFETY CODE (OESC), RULE 2-308(1) (OR LATEST EDITION)
- OESC BULLETIN 2-9-"(LATEST VERSION)

## CLEAR SPACE AROUND PANELBOARDS

SCALE: N.T.S.



## BYPASS OF RECESSED CONDUIT IN SLAB

SCALE: N.T.S.

MAXIMUM BRANCH WIRING DISTANCE FOR 120 V SYSTEM AT 3% VOLTAGE DROP										
WIRE SIZE	BREAKER SIZE (AMPERES)	15	20	30	40	50	60	70	80	100
	MAX. LOAD AT 80% (AMPERES)	12	16	24	32	40	48	56	68	80
NO. 12	----	24.4	18.3	----	----	----	----	----	----	----
NO. 10	----	38.1	29.0	19.1	----	----	----	----	----	----
NO. 8	----	59.4	44.2	30.5	22.9	----	----	----	----	----
NO. 6	----	91.4	70.1	47.2	35.1	28.2	23.6	----	----	----
NO. 4	----	----	109.7	73.2	54.9	42.7	38.1	32.0	27.4	----
NO. 2	----	----	----	114.3	85.3	68.6	57.9	50.3	41.1	35.0
NO. 1	----	----	----	----	103.6	85.3	73.2	61.0	54.9	43.4
NO. 1/0	----	----	----	----	128.0	102.9	85.3	73.2	64.0	48.8
NO. 2/0	----	----	----	----	----	121.9	100.6	86.9	74.7	60.9
NO. 3/0	----	----	----	----	----	----	118.1	102.1	88.4	70.1
NO. 4/0	----	----	----	----	----	----	----	120.4	102.9	83.8
250 MCM	----	----	----	----	----	----	----	----	114.3	91.4
300 MCM	----	----	----	----	----	----	----	----	----	103.6

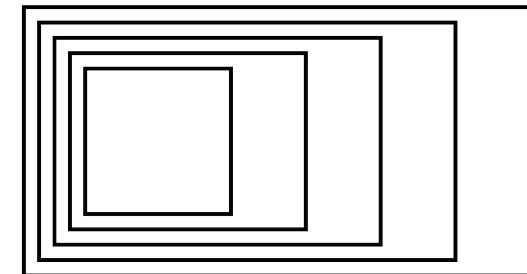
NOTE: DISTANCES INDICATED IN METRES FROM PANEL TO LOAD FOR SINGLE PHASE.

## Max Branch Wiring Distance for 120 V System at 3% Voltage Drop

SCALE: N.T.S.

## TYPICAL SMOKE DETECTOR INSTALLATIONS

SCALE: 1 : 100



## GOW HASTINGS ARCHITECTS

275 SPADINA ROAD  
TORONTO, ONTARIO M5R 2V3  
416-920-0031  
GOWHASTINGS.COM

ALL DRAWINGS, SPECIFICATIONS, RELATED DOCUMENTS AND DESIGN ARE THE COPYRIGHT PROPERTY OF THE ARCHITECT AND MUST BE RETURNED UPON REQUEST. REPRODUCTION OF THE DRAWINGS, SPECIFICATIONS, RELATED DOCUMENTS AND DESIGN IN WHOLE OR IN PART IS STRICTLY FORBIDDEN WITHOUT THE ARCHITECT'S WRITTEN PERMISSION. THIS DRAWING SHALL NOT BE USED FOR CONSTRUCTION PURPOSES UNLESS COUNTERSIGNED.



250 ROWNTREE DAIRY RD., WOODBRIDGE, ON  
TEL: 905-507-0800  
WEB: WWW.QUASARG.COM



2 ISSUED FOR PERMIT AND TENDER 10/31/2025  
1 ISSUED FOR 90% CD - CLIENT REVIEW 10/09/2025

No. ISSUED/REVISED DATE

Henry St H.S. Culinary Classroom Renovation

600 Henry St. Whitby, ON L1N 1L4

## Electrical Detail Sheet No. 1

Scale: As indicated

Project Number:

ED-25-052

Drawn By:

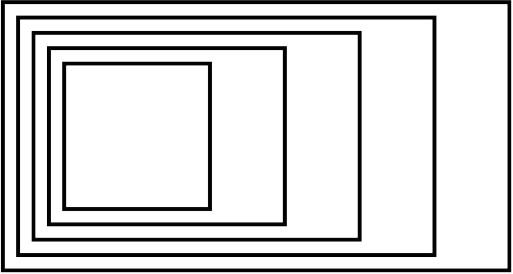
Author

Checked By:

Checker

# E-302





GOW HASTINGS  
ARCHITECTS

275 SPADINA ROAD  
TORONTO, ONTARIO M5R 2V3  
416-920-0031  
GOWHASTINGS.COM

ALL DRAWINGS, SPECIFICATIONS, RELATED DOCUMENTS AND DESIGN ARE THE COPYRIGHT PROPERTY OF THE ARCHITECT AND MUST BE RETURNED UPON REQUEST. REPRODUCTION OF THE DRAWINGS, SPECIFICATIONS, RELATED DOCUMENTS AND DESIGN IN WHOLE OR IN PART IS STRICTLY FORBIDDEN WITHOUT THE ARCHITECT'S WRITTEN PERMISSION. THIS DRAWING SHALL NOT BE USED FOR CONSTRUCTION PURPOSES UNLESS COUNTERSIGNED.



250 ROWNTREE DAIRY RD., WOODBRIDGE, ON  
TEL: 905-507-0800  
WEB: WWW.QUASARCG.COM



2 ISSUED FOR PERMIT AND TENDER 10/31/2025  
1 ISSUED FOR 90% CD - CLIENT REVIEW 10/09/2025

No.	ISSUED/REVISED	DATE
-----	----------------	------

Henry St H.S. Culinary Classroom  
Renovation

600 Henry St, Whitby, ON L1N 1L4

Electrical Detail Sheet No.  
2

Project  
North

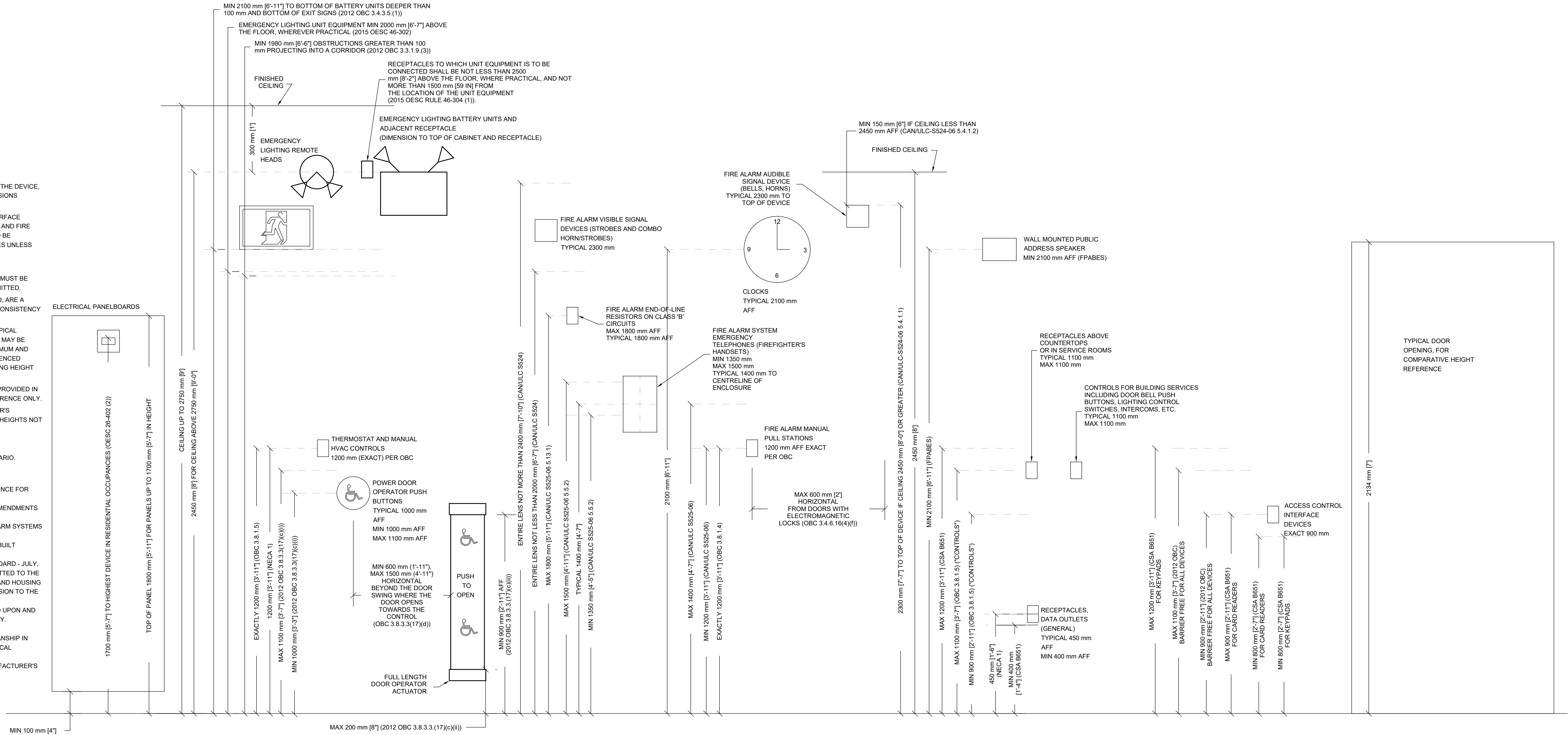
Scale: As indicated  
Project Number:  
ED-25-052  
Drawn By:  
Author  
Checked By:  
Checker

E-303

- GENERAL NOTES:
1. DEVICE DIMENSIONS TO THE CENTRELINE OF THE DEVICE, UNLESS NOTED OTHERWISE. METRIC DIMENSIONS GOVERN.
  2. DEVICES, INCLUDING ACCESS CONTROL INTERFACE DEVICES, DOOR OPERATOR PUSH BUTTONS, AND FIRE ALARM MANUAL PULL STATIONS ARE NOT TO BE INSTALLED ON HOLLOW METAL DOOR FRAMES UNLESS OTHERWISE NOTED.
  3. DEVICE MOUNTING HEIGHT RULES:
    - 3.1. EXACT DIMENSIONS, WHERE INDICATED, MUST BE FOLLOWED, AND NO DEVIANCE IS PERMITTED.
    - 3.2. TYPICAL DIMENSIONS, WHERE INDICATED, ARE A PREFERENCE OF THE DESIGNER FOR CONSISTENCY OF INSTALLATION.
    - 3.3. WHERE CIRCUMSTANCES PREVENT A TYPICAL DIMENSION FROM BEING MET, DEVICES MAY BE INSTALLED WITHIN THE RANGE OF MINIMUM AND MAXIMUM THAT MEETS ALL THE REFERENCED DOCUMENTS. CONFIRM EXACT MOUNTING HEIGHT WITH THE CONSULTANT.
  4. METRIC DIMENSIONS GOVERN. DIMENSIONS PROVIDED IN OTHER UNITS PROVIDED FOR EASE OF REFERENCE ONLY.
  5. REFER TO ARCHITECT OR INTERIOR DESIGNER'S DRAWINGS FOR ELEVATIONS OR MOUNTING HEIGHTS NOT DETAILED HERE.

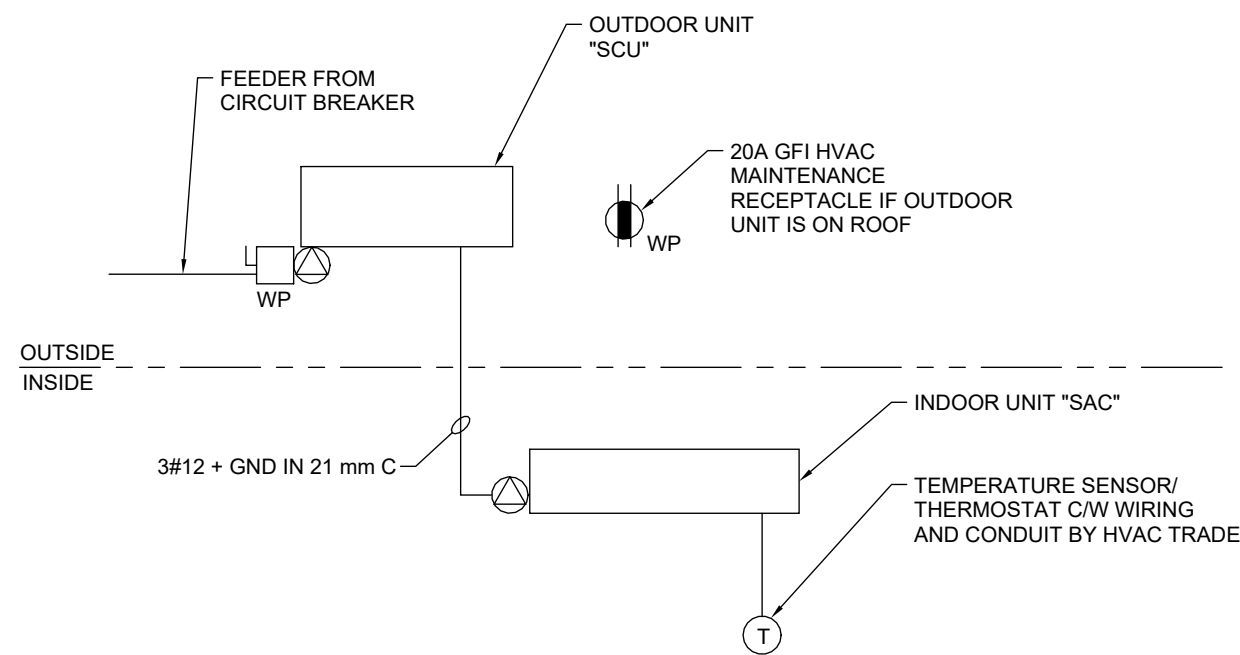
THIS DETAIL IS SPECIFIC TO INSTALLATIONS IN ONTARIO.

- REFERENCES AND DOCUMENT ORDER OF PRECEDENCE FOR ACCESSIBLE DESIGN:
1. 2012 ONTARIO BUILDING CODE (OBC), WITH AMENDMENTS EFFECTIVE JAN 1, 2015 (MANDATORY)
  2. CANULC S524-06 - INSTALLATION OF FIRE ALARM SYSTEMS (MANDATORY)
  3. CSA B651-04 - ACCESSIBLE DESIGN FOR THE BUILT ENVIRONMENT (VOLUNTARY STANDARD)
  4. FINAL PROPOSED ACCESSIBLE DESIGN STANDARD - JULY, 2010 (FPABES). THIS DOCUMENT WAS SUBMITTED TO THE ONTARIO MINISTRY OF MUNICIPAL AFFAIRS AND HOUSING FOR CONSIDERATION IN AN UPCOMING REVISION TO THE ONTARIO BUILDING CODE. TO DATE, THE RECOMMENDATIONS HAVE NOT BEEN ACTED UPON AND THE FPABES IS THEREFORE NOT MANDATORY.
  5. ONTARIO ELECTRICAL SAFETY CODE (OESC).
  6. NECA 1-2010: STANDARD FOR GOOD WORKMANSHIP IN ELECTRICAL CONSTRUCTION (TABLE 3 - TYPICAL MOUNTING HEIGHTS).
  7. GOOD ENGINEERING JUDGEMENT AND MANUFACTURER'S RECOMMENDATIONS.



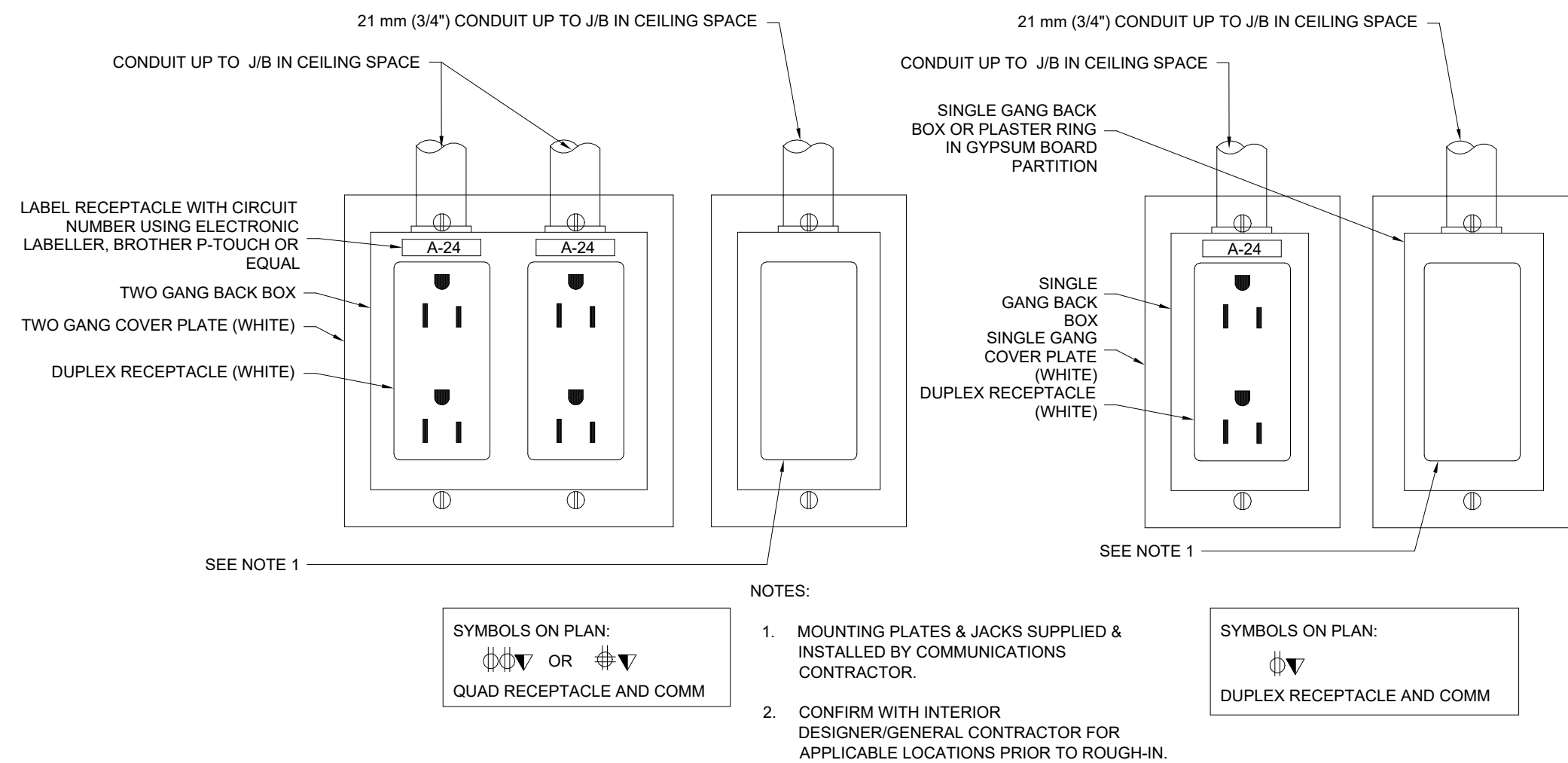
2 TYPICAL DEVICE MOUNTING HEIGHTS (ONTARIO)

SCALE: N.T.S.



3 SPIT-SYSTEM AIR-CONDITIONER WIRING

SCALE: N.T.S.



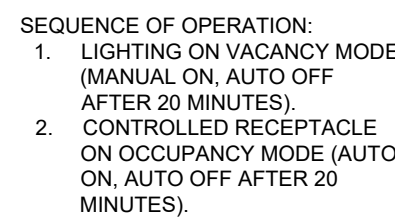
1 UNGANGED DECORATOR STYLE POWER OUTLETS AND COMM BOXES

SCALE: N.T.S.

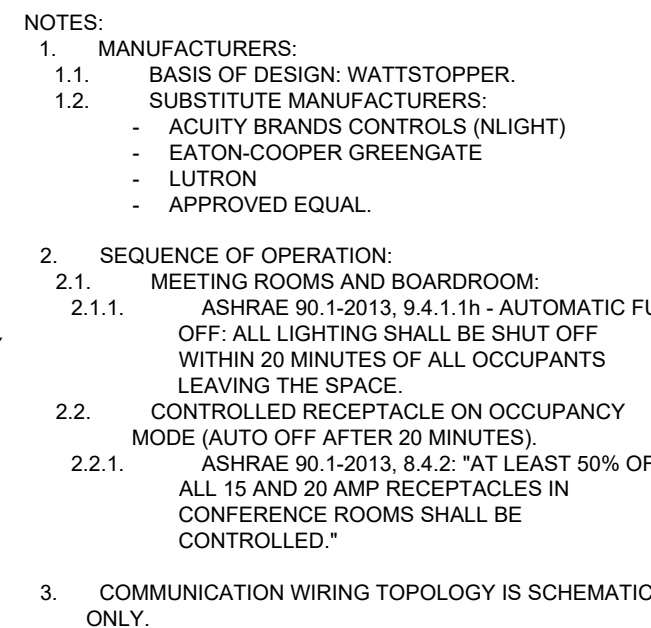




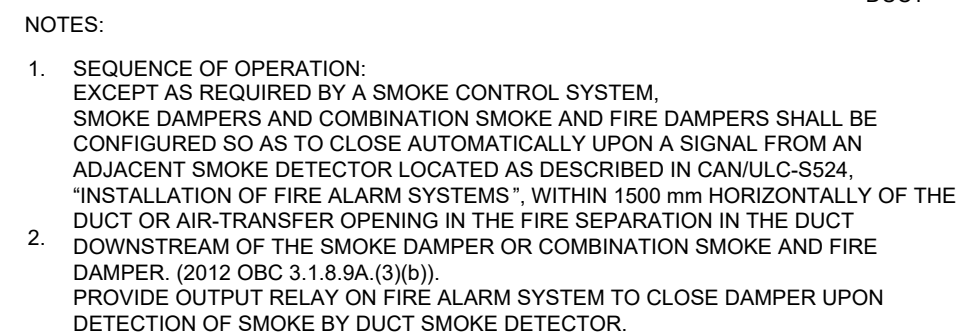
ALL DRAWINGS, SPECIFICATIONS, RELATED DOCUMENTS AND DESIGN ARE THE COPYRIGHT PROPERTY OF THE ARCHITECT AND MUST BE RETURNED UPON REQUEST. REPRODUCTION OF THE DRAWINGS, SPECIFICATIONS, RELATED DOCUMENTS AND DESIGN IN WHOLE OR IN PART IS STRICTLY FORBIDDEN WITHOUT THE ARCHITECT'S WRITTEN PERMISSION. THIS DRAWING SHALL NOT BE USED FOR CONSTRUCTION PURPOSES UNLESS COUNTERSIGNED.



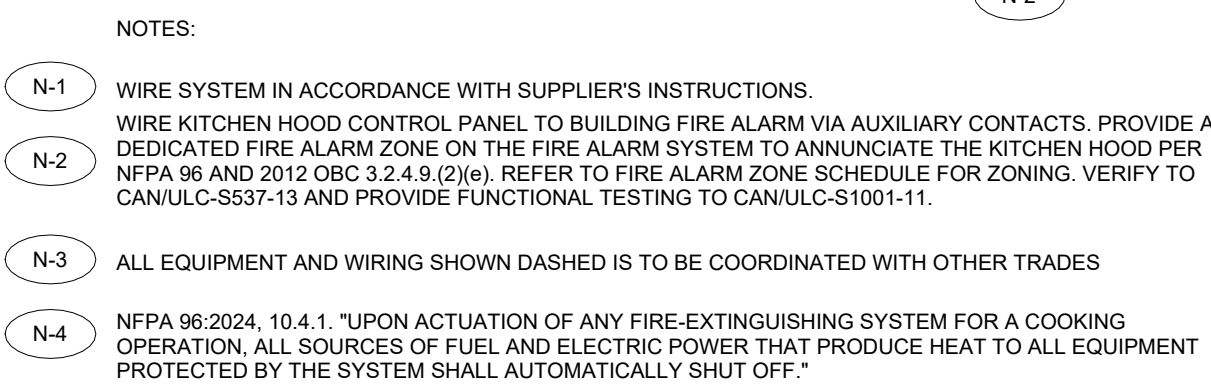
4



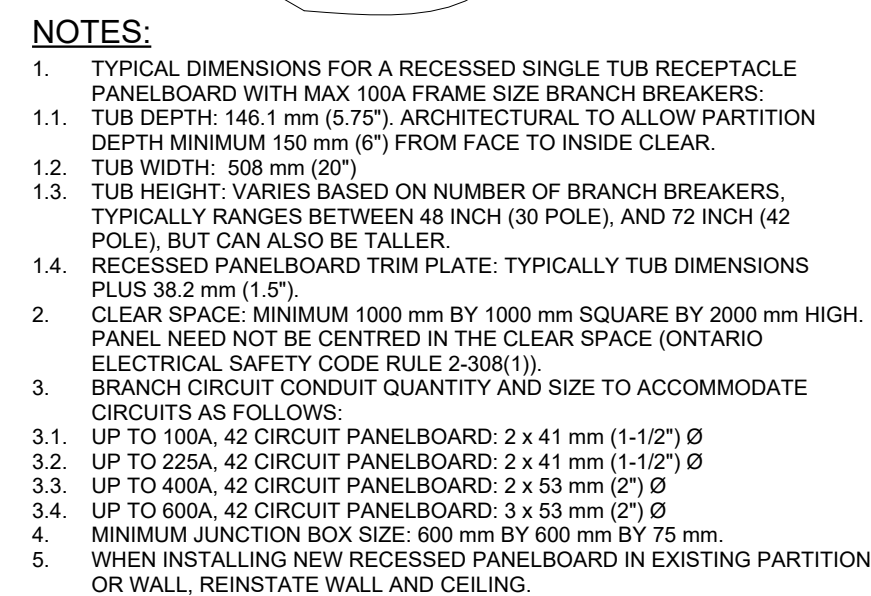
2



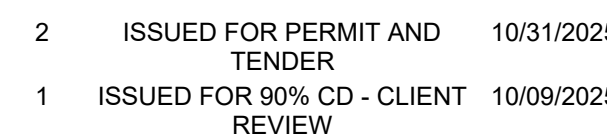
5



3



1



600 Henry St, Whitby, ON L1N 1L4

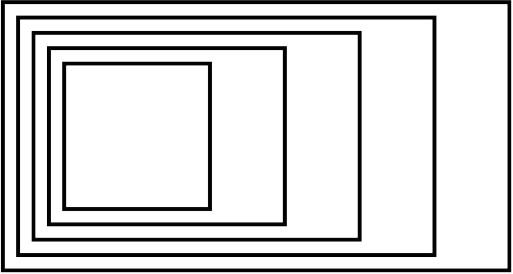
3

Project North

Author

# E-304





GOW HASTINGS  
ARCHITECTS

275 SPADINA ROAD  
TORONTO, ONTARIO M5R 2V3  
416-920-0031  
GOWHASTINGS.COM

ALL DRAWINGS, SPECIFICATIONS, RELATED DOCUMENTS AND DESIGN ARE THE COPYRIGHT PROPERTY OF THE ARCHITECT AND MUST BE RETURNED UPON REQUEST. REPRODUCTION OF THE DRAWINGS, SPECIFICATIONS, RELATED DOCUMENTS AND DESIGN IN WHOLE OR IN PART IS STRICTLY FORBIDDEN WITHOUT THE ARCHITECT'S WRITTEN PERMISSION. THIS DRAWING SHALL NOT BE USED FOR CONSTRUCTION PURPOSES UNLESS COUNTERSIGNED.



250 ROWNTREE DAIRY RD, WOODBRIDGE, ON  
TEL: 905-507-0800  
WEB: WWW.QUASARCG.COM

SCHEDULE 26 05 50.23 - LIGHTING CONTROL DEVICE SCHEDULE								
SYMBOL	TYPE	DESCRIPTION	MANUFACTURER AND PRODUCT SERIES	CONTROL WIRING	VOLTAGE OUTPUT	MOUNTING	SPEC SECTION	REMARKS
§	UI-NV-1B	ONE BUTTON WALL STATION, ONE BUTTON ON-OFF TOGGLE	ACUITY BRANDS CONTROLnLIGHT, nPODM-1SB SERIES LEGRAND/WATTSTOPPER LMSW-101 PHILIPS DYNALITE DPNA SERIES, DPNA914	DIGITAL	-	WALL	26 09 43	SUBMITTAL WITH STANDARD/PROPOSED ENGRAVING OPTION. ALLOW FOR CUSTOM LABELLING OPTION AT OWNER'S DISCRETION.
§ Z1/Z2	UI-DIM-NV-X-B	DIMMING WALL STATION, MULTI-BUTTON WALL INTERFACE CONTROL C/W ENGRAVED BUTTONS. BUTTONS: EACH ZONE CONTROLLED (SEE PLANS), DIM UP, DIM DOWN, ALL OFF, ALL ON 'X' DENOTES NUMBER OF CONTROLLED ZONES	ACUITY BRANDS CONTROLSnLIGHT NPODM SERIES PHILIPS REVOLUTION SERIES DR2PA	DIGITAL	-	WALL	26 09 43	
§ DIM	UI-DIM-NV-B	DIMMING WALL STATION, MULTI-BUTTON WALL INTERFACE CONTROL C/W ENGRAVED BUTTONS. BUTTONS: EACH ZONE CONTROLLED (SEE PLANS), DIM UP, DIM DOWN, ALL OFF, ALL ON	ACUITY BRANDS CONTROLSnLIGHT NPODM SERIES PHILIPS REVOLUTION SERIES DR2PA	DIGITAL	-	WALL	26 09 43	
⦿	DT-C-2V	CEILING MOUNTED OCCUPANCY SENSOR, 24V, DUAL TECHNOLOGY SENSOR	LEGRAND/WATTSTOPPER DT-300 SERIES LUTRON LOS-CDT SERIES	-	24 V	CEILING MOUNTED	26 09 23	
LIGHTING CONTROL SCHEDULE NOTES: 1. LIGHTING CONTROLS OF ONE MANUFACTURER THROUGH PROJECT TO ENSURE PRODUCT COMPATABILITY. 2. ALTERNATE MANUFACTURERS: ACUITY BRANDS LIGHTING (SENSORSWITCH, nLIGHT), COOPER LIGHTING SOLUTIONS, DOUGLAS LIGHTING CONTROLS, LUTRON, SIGNIFY (FORMERLY PHILIPS LIGHTING), WATTSTOPPER-LEGRAND. 3. DUAL TECHNOLOGY SENSORS: PASSIVE INFRARED/ULTRASONIC, OR PASSIVE INFRARED/MICROPHONIC, DEPENDING ON MANUFACTURER, MICROPHONIC SENSORS ACCEPTABLE IN LIEU OF ULTRASONIC. 4. POSITION CEILING MOUNTED OCCUPANCY SENSORS A MINIMUM 1200 mm (4'-0") FROM NEAREST DIFFUSER, HVAC OUTLETS, HEATING BLOWERS, ETC. 5. CONFIRM INSTALLATION REQUIREMENTS, WIRING DIAGRAMS, ETC. WITH MANUFACTURER'S DETAILS. 6. SUBMIT SHOP DRAWINGS FOR CONSULTANT'S REVIEW PRIOR TO PLACING ANY ORDER. 7. CONFIRM FINISH COLOUR WITH CONSULTANT DURING SUBMITTAL REVIEW.								

SCHEDULE 26 05 50.16 - LIGHTING FIXTURE SCHEDULE								
SYMBOL	TYPE	DESCRIPTION	BASIS OF DESIGN MANUFACTURER AND CAT NO. SEE NOTE 1	VOLTAGE/ INPUT WATTS	LUMEN PACKAGE (3500K CCT UNLESS NOTED OTHERWISE) MINIMUM 80 CRI	MOUNTING	REFERENCE	REMARKS
▮	L1	RECESSED 2' x 4' TROFFER STYLE LED LUMINAIRE COMPLETE WITH HINGED AND LATCHED STEEL LENS FRAME AND POLYCARBONATE PRISMATIC LENS 0.125" THICK. LUMINAIRE SUITABLE FOR INSTALLATION IN T-BAR CEILINGS.	PEERLESS ELECTRIC (OMNILUMEN) LACH SERIES CAT#LACH-3-24G-40-40K-12P-347	347V 33W	4000 LUMEN 4000K	RECESSED T-BAR CEILING		
○	L2	100 mm (4 INCH) NOMINAL ROUND APERTURE RECESSED LED DOWNLIGHT COMPLETE WITH WHITE TRIM RING AND SEMI-SPECULAR REFLECTOR	PRESCOLITE LIGHTING (OMNILUMEN) LTR-R4D SERIES CAT #LTR-4RD-H-SL15L-34	347V 18.6W	1500 LUMEN 4000K	RECESSED DRYWALL CEILING		
○	L3	100 mm (4 INCH) NOMINAL ROUND APERTURE RECESSED LED DOWNLIGHT COMPLETE WITH WHITE TRIM RING AND SEMI-SPECULAR REFLECTOR	PRESCOLITE LIGHTING (OMNILUMEN) LTR-R4D SERIES CAT #LTR-4RD-H-SL14H-34	347V 18.6W	1500 LUMEN 4000K	RECESSED T-BAR CEILING		
LIGHTING FIXTURE SCHEDULE NOTES: 1. UNLESS NOTED OTHERWISE, ACCEPTED ALTERNATE MANUFACTURERS AND SUPPLIERS: ACUITY BRANDS LIGHTING, CREE CANADA, HUBBELL LIGHTING, PEERLESS ELECTRIC, SIGNIFY (FORMERLY PHILIPS LIGHTING), VISCORVISIONEERING. 2. WHERE AN INCOMPLETE MODEL/CAT NO. IS LISTED, MANUFACTURERS/SUPPLIERS MUST CONFIRM THE PROPOSED FIXTURE WITH THE CONSULTANT A MINIMUM OF ONE WEEK PRIOR TO TENDER CLOSE. 3. SUBMIT SHOP DRAWINGS FOR CONSULTANT'S REVIEW PRIOR TO PLACING ANY ORDER.								

SCHEDULE 26 05 50.19 - EMERGENCY LIGHTING FIXTURE SCHEDULE								
SYMBOL	TYPE	DESCRIPTION	MANUFACTURER AND PRODUCT SERIES	VOLTAGE	LAMPS	MOUNTING	SPEC SECTION	REMARKS
⚡	EM1	MICRO SIZE DOUBLE REMOTE HEAD COMPLETE WITH POLYCARBONATE IMPACT RESISTANT LENS	-LUMACELL MOM-1NC-LD10-CSA SERIES -EMERGILITE EF40 SERIES -STANPRO SMC SERIES -BEGHELLI BOLLIA REMOTE SERIES	12V	1x6W MR16 LED	WALL SURFACE	26 52 13.13	
EMERGENCY LIGHTING FIXTURE SCHEDULE NOTES: 1. WHERE AN INCOMPLETE MODEL/CAT NO. IS LISTED, MANUFACTURERS/SUPPLIERS MUST CONFIRM THE PROPOSED FIXTURE WITH THE CONSULTANT A MINIMUM OF ONE WEEK PRIOR TO TENDER CLOSE. 2. SUBMIT SHOP DRAWINGS FOR CONSULTANT'S REVIEW PRIOR TO PLACING ANY ORDER. 3. ACCEPTABLE MANUFACTURERS AS NOTED IN SECTION 26 52 13.13 [OR] 4. ACCEPTABLE MANUFACTURERS: AIMLITE, BEGHELLI, EMERGILITE, LUMACELL, STANPRO. 5. REMOTE HEADS CERTIFIED TO CSA C22.2 No. 141. 6. CBEB - CENTRE BEAM CANDLE POWER 6. CONFIRM RECOMMENDED SPACING WITH EMERGENCY LIGHTING MANUFACTURER PRIOR TO START OF ROUGH-IN.								



2 ISSUED FOR PERMIT AND TENDER 10/31/2025  
1 ISSUED FOR 90% CD - CLIENT REVIEW 10/09/2025

No.	ISSUED/REVISED	DATE
-----	----------------	------

Henry St H.S. Culinary Classroom Renovation

600 Henry St, Whitby, ON L1N 1L4

Lighting Schedules

Project North

Scale: 1 : 1

Project Number:  
ED-25-052

Drawn By:  
Author

Checked By:  
Checker

E-305