

## **PART 1      GENERAL**

### **1.1      General and Related Work**

- .1 Read this Section in conjunction with all drawings and all other Sections so as to comply with the requirements of Division 1 and the General Conditions of the Contract.
- .2 Related work specified elsewhere:  
  
Section 02 82 00.01      Asbestos Abatement – Type 1 Procedures  
  
Section 02 82 00.02      Asbestos Abatement – Type 2 Procedures
- .3 Site Conditions identifies all known hazardous building materials within the Project Area. The information provided is for general reference only. Each Contractor must confirm existing conditions on site prior to tender close:
  - .1 The specification fulfils the requirements of Section 30 of the Ontario Occupational Health and Safety Act.
  - .2 The specification fulfils the requirements of the Section 10 of Ontario Regulation 278/05.
- .4 The Outline of Work identifies the location of hazardous building materials to be removed as part of this project:
  - .1 It is the intent that work prescribed this Section will result in the removal of all hazardous materials as outlined and the decontamination of all surfaces or materials which may have been or become contaminated by hazardous materials either during or prior to work of this Contract.

### **1.2      Site Conditions**

- .1 Refer to the report entitled “Revised Hazardous Building Materials Assessment (Pre-Construction), Grafton Public School, 654 Station Road, Grafton, Ontario”, dated December 5, 2025, prepared by Pinchin Ltd., file number 367131.004.
- .2 Refer to Drawings HM-01 through HM-03 for the locations of identified hazardous materials.
- .3 Asbestos:
  - .1 The following materials have been confirmed to contain asbestos:
    - .1 Texture coat, containing chrysotile asbestos, present on block masonry walls and as overspray on ducts above ceiling in the following locations:
      - .1 Meeting Rooms (Loc. 12, 13, & 14)
      - .2 Vestibule (Loc. 16)

- .2 Parging cement, containing chrysotile asbestos, present on pipe fittings in the following locations:
  - .1 Library (Loc. 33)
  - .2 Ramp & Corridor (Loc. 35)
- .3 Aircell insulation, containing chrysotile asbestos, present on pipes in the following locations:
  - .1 Vestibule (Loc. 2)
  - .2 Corridor (Loc. 3)
  - .3 Library (Loc. 33)
- .4 Joint compound, containing chrysotile asbestos, present on drywall wall and ceiling finishes in the following locations:
  - .1 Library (Loc. 33)
  - .2 Work Room (Loc. 36)
  - .3 Corridor H05 (Loc. 47)
- .5 Vinyl floor tiles, containing chrysotile asbestos, present in the following locations:
  - .1 Copier Room (Loc. 15)
  - .2 Lunchroom (Loc. 34)
- .6 Caulking, containing chrysotile asbestos, present on metal flashing in the following locations:
  - .1 Roof (Loc. 65)
- .7 Paint, containing chrysotile asbestos, present on block masonry walls in the following locations:
  - .1 Boiler Room (Loc. 1)
  - .2 Vestibule (Loc. 2)
  - .3 Corridor (Loc. 3)
  - .4 Vestibule Loc. 5)
  - .5 Meeting Rooms (Loc. 12 & 13)
  - .6 Lunchroom (Loc. 34)
  - .7 Ramp & Corridor (Loc. 35)
  - .8 Corridor H05 (Loc. 47)
  - .9 Storage (Loc. 48)
  - .10 Classroom 18 (Loc. 49)
  - .11 Washroom (Loc. 50)
  - .12 Classroom 9 (Loc. 52)
  - .13 Classroom 8B (Loc. 54)
  - .14 Classroom 8 (Loc. 55)
  - .15 Classroom 8A (Loc. 56)
  - .16 Classroom 17 (Loc. 57)
  - .17 Staff Washroom (Loc. 59)
  - .18 Washroom (Loc. 69)
  - .19 Corridor (Loc. 70)
- .8 Tar, containing chrysotile asbestos, present covering ducting in the following locations:
  - .1 Roof (Loc. 65)
- .2 The following materials are presumed to contain asbestos:
  - .1 Terrazzo
  - .2 Thinset beneath ceramic tiles

- .3 The following materials have been confirmed to not contain asbestos, based on sampling or material composition:
  - .1 Drywall joint compound, unless mentioned in Section 1.2.3.1.4
  - .2 Vinyl floor tiles and associated mastics, unless mentioned in Section 1.2.3.1.5
  - .3 Caulking, unless mentioned in Section 1.2.3.1.6
  - .4 Paint on block masonry, unless mentioned in Section 1.2.3.1.7
  - .5 Baseboard mastic
  - .6 Roofing materials
  - .7 Duct mastic
  - .8 Acoustic lay-in ceiling tiles
  - .9 Cementitious firestopping
  - .10 Plaster
- .4 Lead:
  - .1 The following paint finishes have been confirmed to contain elevated concentrations of lead:
    - .1 White paint on drywall ceilings (0.0597%)
    - .2 Blue paint on metal window frames (0.19%)
    - .3 Blue paint on wood doors (0.12%)
    - .4 Green paint on rooftop air handling units (0.32%)
    - .5 Paint on plaster (0.13%)
  - .2 The following paint finishes have been confirmed to contain insignificant concentrations of lead:
    - .1 Light brown paint on metal flashing
    - .2 Beige paint on drywall
    - .3 Dark blue on metal door frames
    - .4 White paint on block masonry
  - .3 The following building materials are presumed, or have been confirmed, to contain lead:
    - .1 Red paint on structural steel beams and joists
    - .2 Batteries in emergency lights
- .5 Mercury:
  - .1 The following building materials are presumed, or have been confirmed, to contain mercury:
    - .1 Fluorescent lighting
- .6 Silica:
  - .1 The following building materials are presumed, or have been confirmed, to contain silica:
    - .1 Concrete
    - .2 Masonry and mortar
    - .3 Plaster
    - .4 Ceramic tiles and grout

- .5 Terrazzo
- .7 Polychlorinated Biphenyls:
  - .1 The following building materials are presumed to contain PCBs:
    - .1 Light ballasts
- .8 Mould:
  - .1 Mould growth was not observed in the work area at the time of the assessment.
- .9 Remaining designated substances including arsenic, acrylonitrile, benzene, coke oven emissions, ethylene oxide, isocyanates, vinyl chloride monomer, are not typically found in building materials in a composition/state that is hazardous and are not presumed to be present within the Work Areas.
- .10 General Building Conditions:
  - .1 Heat and smoke detectors to remain live throughout work.
  - .2 Sprinklers to remain live throughout work.
  - .3 Emergency/fire exits to remain clear and accessible throughout work.

### 1.3 Outline of Work

- .1 Coordinate the following items with the Owner's Project Manager and the Construction Manager, including but not limited to: electrical isolations, GFI connection, water connections, bin placement, schedule, disconnects, etc.
- .2 Refer to the Contract Drawings prepared by DEI Engineering Consultant for the extent of construction work and the Project Areas.
- .3 Refer to Drawings HM-01 through HM-03 for the extent of the Abatement Work Areas.
- .4 Removal of non-asbestos materials will be done by others, unless the removal will impact asbestos (i.e., fixtures adhere to asbestos containing finishes).
- .5 Using Type 1 procedures prescribed in the Sections identified in Related Work, remove and dispose of asbestos-containing tar covering ducts in the following locations:
  - .1 Roof (Loc. 65)
- .6 Using Type 2 procedures prescribed in the Sections identified in Related Work, remove and dispose of drywall with asbestos-containing joint compound in the following locations:
  - .1 Library (Loc. 33)
- .7 Refer to Specification Sections identified in the Related Work for specified personnel protective measures for the safe handling, removal, clean-up, of hazardous materials in each Abatement Work Area.

- .8 Visit the site prior to tender close to confirm the location and extent of any hazardous building materials or materials contaminated by hazardous materials.
- .9 Protect surfaces, building fabrics and items remaining within the Abatement Work Area.
- .10 Without disturbing hazardous materials, perform removals where required, prior to abatement work:
  - .1 Maximize waste diversion by use of resale of building materials, or recycling.
- .11 Isolate the Abatement Work Area from adjoining Occupied and Non-Occupied Areas whether present at an interior or exterior location.
- .12 Maintain emergency and fire exits from Abatement Work Area, or establish alternative exits satisfactory to Provincial Fire Marshall and local authorities having jurisdiction. Maintain extra routes from occupied areas. Place emergency exit signs at locations to clearly mark exit route. Seal emergency exit doors so as not to impede use of door during emergency evacuation.
- .13 Perform selective demolition of mechanical and electrical equipment, building components, materials and items scheduled for demolition at locations required to facilitate asbestos removal. Refer to all Contract Documents for responsibility of demolition work and disposal.
- .14 Remove and dispose of as appropriate waste, building components, materials and items contaminated by hazardous materials that cannot be effectively cleaned.
- .15 Final clean work area to remove visible signs of asbestos and other hazardous materials, other debris or settled dust.
- .16 Unless otherwise specified, the handling, removal, clean-up or repair of hazardous materials or surfaces contaminated with hazardous materials is to be performed following wet removal techniques.

#### **1.4 Schedule**

- .1 Provide necessary manpower, supervision, equipment and materials to maintain and complete the project on schedule.
- .2 Work Hours:
  - .1 Coordinate all work, scheduling and phasing with the Owner.
- .3 Provide 48 hours written notice to the Abatement Consultant of any request to work outside normal working hours. Obtain written approval before proceeding.

## 1.5 Definitions

- .1 Abatement Consultant: Owner's Representative providing review and air monitoring.
- .2 Abatement Contractor: Contractor or sub-contractor performing work of this section.
- .3 Abatement Work Area: Area where work takes place which will, or may, disturb hazardous materials.
- .4 Amended Water: Water with wetting agent added for the purpose of reducing surface tension to allow thorough wetting of materials.
- .5 Asbestos: Any of the fibrous silicates defined in Regulation 278/05 including: actinolite, amosite, anthophyllite, chrysotile, crocidolite and tremolite.
- .6 Asbestos-Containing Material (ACM): Material identified under Site Conditions including any debris, overspray, fallen material and settled dust.
- .7 Authorized Visitors: Building Owner, Abatement Consultant, or designated representative, and persons representing regulatory agencies.
- .8 Competent Worker: A worker who is qualified because of knowledge, training and experience to perform the work, is familiar with Regulation 278/05 and the Occupational Health and Safety Act and has knowledge of the potential or actual danger to health and safety in the work.
- .9 Contaminated Waste: Material identified under Site Conditions, including fallen material, settled dust, other debris and materials or equipment deemed to be contaminated by the Abatement Consultant.
- .10 Curtained Doorway: Doorway consisting of two (2) overlapping flaps of rip-proof polyethylene arranged to permit ingress and egress from one room to another while permitting minimal air movement between rooms.
- .11 DOP Test: A testing method used to determine the integrity of the Negative Pressure unit or vacuum using a Dispersed Oil Particulate (DOP) or Poly Alpha Olefin (PAO) HEPA filter leak test. This test is to be conducted on site where units are to be installed. Refer to the Environmental Abatement Council of Ontario (EACO) DOP/PAO Testing Guideline 2013 or ANSI/ASME N510-2007.
- .12 Fitting: Individual segments or pieces of a mechanical service line which may include but is not limited to the hangers, tees, elbows, joints, valves, unions, etc.
- .13 Friable Material: Material that when dry can be crumbled, pulverized or powdered by hand pressure and includes such material that is crumbled, pulverized or powdered.
- .14 HEPA: High Efficiency Particulate Aerosol filter that is at least 99.97 percent efficient in collecting a 0.3 micrometre aerosol.

- .15 Lead-Containing: The Ontario Ministry of Labour, Immigration, Training and Skills Development (MOLTSD) has not established a lower limit for concentrations of lead in paint, below which precautions do not need to be considered during construction projects. Pinchin follows the recommendations of the Environmental Abatement Council of Canada (EACC) Lead Guideline for Construction, Renovation, Maintenance or Repair. The Guideline suggests that 0.1% (1,000 ppm) lead in paint represents a de minimis concentration of lead in paint for construction hygiene purposes, that is a concentration below which the lead content is not the limiting hazard in any disturbance of leaded paint for non-aggressive disturbance of painted finishes, (hand powered demolition, chipping, scraping, light sanding, etc.).
- .16 Lead Waste: Waste generated from removal of lead-containing materials, or the substrate and paint finish, where left intact.
- .17 Mercury Waste: Equipment, materials or items containing mercury or contaminated with mercury.
- .18 Milestone Review: Review of the Abatement Work Area at a defined point in the abatement operation.
- .19 Non-Friable Material: Material that when dry cannot be crumbled, pulverized or powdered by hand pressure.
- .20 Occupied Area: Any area of the building or adjoining space outside the Abatement Work Area.
- .21 Personnel: All Contractor's employees, sub-contractors employees, supervisors.
- .22 PCM: Phase Contrast Microscopy.
- .23 Remove: Remove means remove and dispose of (as applicable type of waste) unless followed by other instruction (e.g. remove and turn over to Owner).
- .24 TEM: Transmission Electron Microscopy.

## 1.6 Regulations and Guidelines

- .1 Comply with Federal, Provincial, and local requirements, provided that in any case of conflict among those requirements or with these Specifications, the more stringent requirements shall apply. Work shall be performed under regulations in effect at the time work is performed.
- .2 Where regulations are not present, follow accepted industry standards and applicable Guideline documents.
- .3 Regulations and Guidelines include but are not limited to the following:
  - .1 Ministry of Labour Occupational Health and Safety Act Regulations for Construction Projects including Revised Statutes of Ontario 1990, Chapter 0.1 and Ontario Regulation 278/05.

- .2 Ministry of the Environment and Climate Change Regulation for the disposal of waste, including R.R.O. 1990, Reg. 347 as amended.
- .3 PCB Regulations, SOR 2008-273 and R.R.O. 1990, Reg 362.
- .4 Regulation 490/09 Designated Substances.
- .5 Environmental Abatement Council of Canada (EACC), Lead Guideline for Construction, Renovation, Maintenance or Repair, October 2014.
- .6 Ministry of Labour, Guideline, Silica on Construction Projects, 2011.

## **1.7 Quality Assurance**

- .1 Removal and handling of hazardous materials is to be performed by persons trained in the methods, procedures and industry practices for Abatement.
- .2 Ensure work proceeds to schedule, meeting all requirements of this Specification.
- .3 Complete work so that at no time airborne dust, visible debris, or water runoff contaminate areas outside the Abatement Work Area.
- .4 Any contamination of surrounding area (indicated by visual review or air monitoring) shall necessitate the clean-up of affected area, and in the same manner applicable to an Abatement Work Area at no cost to the Owner.
- .5 All work involving electrical, mechanical, carpentry, glazing, etc., shall be performed by licensed persons experienced and qualified for the work required.

## **1.8 Supervision**

- .1 Provide on site for each work shift, a Shift Superintendent(s), who has authority regarding all aspects related to manpower, equipment and production.
- .2 Supervisory personnel must hold a recognized certificate proving attendance at an asbestos removal training course (2-day minimum duration) and have performed supervisory functions on at least five (5) other asbestos abatement projects of similar size and complexity.
- .3 At all times during work, the Overall or Shift Superintendent(s) must be on site. Failure to comply with this requirement will result in a stoppage of all work, at no cost to the Owner.
- .4 Do not replace supervisory personnel without written approval from the Owner.

## **1.9 Instruction and Training**

- .1 Instruction and training must be provided by a competent person.
- .2 All workers completing Type 1 and 2 asbestos abatement must be trained in compliance with Section 19 of O.Reg. 278/05.



### **1.10 Notification**

- .1 Before commencing work, notify orally and in writing, an inspector at the office of the Ontario Ministry of Labour nearest the project site, where required.
- .2 Inform all trades on site of the presence and location of hazardous materials identified in the Contract documents.
- .3 Notify the Owner or Owner's Representative, the Joint Occupational Health and Safety Committee and the Provincial Ministry of Labour, if suspected asbestos-containing materials not identified in the contract documents are discovered during the course of the work. Stop work in these areas immediately.
- .4 Notify Sanitary Landfill site as per O.Reg. 347/90 as amended.

### **1.11 Submittals**

- .1 Submit prior to starting work:
  - .1 Provincial Workers' Compensation Board Clearance Certificate.
  - .2 Insurance certificates.
  - .3 Copy of Company Health and Safety Policy and applicable programs.
  - .4 Ministry of Labour Notice of Project form.
  - .5 Copy of Certificate of Approval for disposal of hazardous materials waste and location of landfill.
  - .6 Pre-removal damage survey of the Abatement Work Areas, waste transport routes, and bin storage areas.
- .2 Submit the following information regarding personnel prior to starting work:
  - .1 Written statement that personnel have had instruction on hazards of exposure to hazardous materials identified within this scope, the use of respirator, protective clothing, worker and waste decontamination procedures, and all aspects of work procedures and protective measures.
  - .2 WHMIS training certificates for all personnel.
  - .3 Certificate proving that each worker on site has been fit tested for the respirator appropriate for the work being performed.
  - .4 Proof of training for the following site-specific hazards or conditions identified:
    - .1 Working at Heights

- .3 Submit the following information regarding HEPA filtered devices prior to construction of enclosure or asbestos abatement:
  - .1 Performance data on HEPA filtered vacuums including DOP tests no more than 3 months old.
  - .2 DOP tests to be performed by an independent testing company:
    - .1 DOP testing company is required to submit a detailed technical report of testing protocol, including Introduction, Methodology, Results, Conclusions, and Recommendations, including results of the Air-Aerosol Mixing Uniformity test as per ASME N510-1989 (1995).
    - .2 DOP testing company must also provide calibration certificates from an independent calibration firm or from the manufacturer of the testing equipment for both the aerosol photometer and the pressure gauge on the aerosol generator dated within 1 calendar year from the on-site testing date.
    - .3 DOP testing company must also provide the National Sanitation Foundation (NSF) certification name and number of the on-site technician performing the testing.
  - .3 Proof of calibration of DOP testing equipment.
- .4 Submit the following prior to isolating the Abatement Work Area:
  - .1 Safety Data Sheets for chemicals or material used in the course of the Abatement Project.
- .5 Submit the following upon completion of the work:
  - .1 Manifests, waybills, bills of lading etc. as applicable for each type of waste.

#### **1.12 Insurance**

- .1 Maintain a Commercial General Liability Policy with an insurance company acceptable to Pinchin Ltd. And Kawartha Pine Ridge District School Board. The intent of this policy is to hold Pinchin Ltd. And Kawartha Pine Ridge District School Board harmless as it relates to claims for Bodily Injury or Property Damage or both, relating to the contract. Commercial General Liability insurance shall be provided on an “occurrence” basis to cover injury or damage (whether detected or not during the policy period) which happens during the policy period.
- .2 Maintain an Automobile or Fleet Policy, and Non-owned Automobile Policy with an insurance company acceptable to Pinchin Ltd. And Kawartha Pine Ridge District School Board. The intent of these policies is to hold Pinchin Ltd. And Kawartha Pine Ridge District School Board harmless as it relates to claims for Bodily Injury or Property Damage or both, relating to the contract.

- .3 Maintain a Pollution Liability Policy (or asbestos/lead liability policy or specific coverage under the CGL for asbestos/lead abatement) with an insurance company acceptable to Pinchin Ltd. And Kawartha Pine Ridge District School Board. The intent of this policy is to hold Pinchin Ltd. And Kawartha Pine Ridge District School Board harmless as it relates to claims for Bodily Injury or Property Damage or both, relating to the contract. Pollution Liability shall be provided on an “occurrence” basis to cover injury or damage (whether detected or not during the policy period) which happens during the policy period. Without limiting the generality of the foregoing, the policy shall insure the operations of abatement and shall not contain any environmental and/or health hazard exclusions relating to remediation operations.
- .4 Forward all certificates to Pinchin Ltd. And Kawartha Pine Ridge District School Board before work is commenced, showing Pinchin Ltd. And Kawartha Pine Ridge District School Board as additional insured as their interest may appear.
- .5 Pinchin Ltd. And Kawartha Pine Ridge District School Board may request a certified true copy of the policies.
- .6 The limits will not be less than:
  - .1 Commercial General Liability \$5,000,000.00
  - .2 Automobile \$2,000,000.00
  - .3 Pollution Policy \$5,000,000.00

#### **1.13 Site Review**

- .1 From commencement of work until completion of clean-up operations, the Abatement Consultant is empowered by the Owner to inspect for compliance with the requirements of governing authorities, adherence to specified procedures and materials, and to inspect for final cleanliness and completion.
- .2 The Abatement Consultant is empowered by the Owner to order a shutdown of work when leakage of asbestos from the controlled work area has occurred or is likely to occur.
- .3 Any deviation from the requirements of the Specifications or governing authorities that is not approved in writing may result in a stoppage of work, at no cost to the Owner.
- .4 Additional labour or materials expended by the Contractor to rectify unsatisfactory conditions and to provide performance to the level specified shall be at no additional cost to the Owner.
- .5 Site Review and air monitoring performed as a result of Contractor's failure to perform satisfactorily regarding quality, safety, or schedule, shall be back charged to the Contractor.
- .6 Facilitate review and provide access as necessary. Make good work disturbed by review and testing at no cost to the Owner.

- .7 Refer to the Sections identified in Related Work for specified milestone reviews which are to take place at defined points throughout the abatement operation specific to each phase or work area.
- .8 Provide 24 hours written notice to the Abatement Consultant of any request for scheduling of milestone reviews or transportation of waste through Occupied Areas.
- .9 The following Milestone Reviews may take place, at the Owner's cost, as outlined in each related specification section:
  - .1 Milestone Review - Clean Site Preparation
    - .1 Review of preparations and set-up prior to contaminated work in the Abatement Work Area.
  - .2 Milestone Review – Bulk Removal Review
    - .1 Review during asbestos removal, monitoring removal methods, site deficiencies, performing occupied air monitoring, etc.
  - .3 Milestone Review - Visual Clearance
    - .1 Review of Abatement Work Area after completion of all abatement, but prior to application of lock-down agents or dismantling of enclosure.
  - .4 Milestone Review – Post Abatement Sampling
    - .1 Air monitoring performed following removal of asbestos and application of slow drying sealer, where required, to ensure fibre levels inside the Type 2 Abatement Work Areas are within the acceptable limits.
- .10 Refer to the Sections identified in Related Work for specified milestone reviews which are to take place at defined points throughout the abatement operation specific to each phase or work area.
- .11 Do not proceed with next phase of work until written approval of each milestone is received from the Abatement Consultant.

#### **1.14 Air Monitoring - Asbestos**

- .1 Air monitoring will be performed using Phase Contrast Microscopy (PCM) following the National Institute for Occupational Safety and Health Method 7400.
- .2 Co-operate in the collection of air samples, including providing workers to wear sample pumps for up to full-shift periods. Contractor will be responsible for the cost of testing equipment repairs or resampling resulting from the actions of the Contractor's forces.
- .3 Results of PCM samples at or exceeding 0.05 fibres per cubic centimeter of air (fibre/cc) or greater, outside an Abatement Work Area, will indicate asbestos contamination of these areas. Respond as follows:
  - .1 Suspend work within the adjoining Abatement Work Area until written authorization to resume work has been received from the Abatement Consultant.

- .2 Isolate and clean area in the same manner applicable to the Abatement Work Area.
- .3 Maintain work area isolation and repeat clean-up operations until visual review and air monitoring results are at a level equal to that specified.
- .4 At the discretion of the Abatement Consultant provide additional negative air units at locations specified in response to elevated fibre levels being detected in the Clean Change Room or Occupied Areas.
- .4 Results of PCM samples at or greater than 0.05 fibres per cubic centimeter of air (fibre/cc), collected within the Abatement Work Area after the site has passed a visual review will indicate asbestos contamination of these areas. Respond as follows:
  - .1 Maintain Abatement Work Area isolation and re-clean entire Abatement Work Area.
  - .2 Repeat above measures until visually inspected and air monitoring results are at a level equal to that specified
  - .3 Alternate to items above, the Asbestos Abatement Contractor can pay for analysis of PCM samples by Transmission Electron Microscopy (TEM) at NVLAP accredited laboratory:
    - .1 Abatement work area to remain isolated, and subject to required daily reviews until TEM results are received.
- .5 Additional labour or materials expended by the Contractor to rectify unsatisfactory conditions and to provide performance to the level specified shall be at no additional cost to the Owner.
- .6 Cost of additional review and sampling performed as a result of elevated fibre levels in areas outside the Abatement Work Area or from within the work area following completion of work, will be back charged to the Contractor.

#### **1.15 Worker Protection**

- .1 Instruct workers before allowing entry to the Abatement Work Area. Instruction shall include training in use of respirators, dress, showering, entry and exiting from an Abatement Work Area, and all other aspects of work procedures and protective measures.
- .2 Workers shall not eat, drink, chew gum or tobacco, vape or smoke in the Abatement Work Area.
- .3 Workers shall be fully protected at all times when possibility of disturbance of hazardous materials exists.
- .4 Provide soap, towels and facilities for washing of hands and face, which shall be used by all personnel when leaving the Abatement Work Area.

.5 Respiratory Protection

- .1 Refer to each particular Section of the Specification for specified type of respiratory equipment specific to each Abatement Work Area.
- .2 Respirators shall be:
  - .1 Certified by the National Institute of Occupational Safety and Health (NIOSH) or other testing agency acceptable to the Ministry of Labour.
  - .2 Fitted so that there is an effective seal between the respirator and the worker's face. Ensure that no person required to enter an Abatement Work Area has facial hair which affects the seal between respirator and face.
  - .3 Assigned to a worker for their exclusive use.
  - .4 Maintained in accordance with manufacturer's specifications.
  - .5 Cleaned, disinfected and inspected by a competent person after use on each shift, or more often if required.
  - .6 Repaired or have damaged or deteriorated parts replaced.
  - .7 Stored in a clean and sanitary location.
  - .8 Provided with new filters as necessary, according to manufacturer's instructions.
  - .9 Worn by personnel who have been fit checked by qualitative or quantitative fit-testing.
  - .10 Instruction on proper use of respirators must be provided by a competent person as defined by the Occupational Health and Safety Act.
- .3 Provide protective clothing, to all personnel which:
  - .1 Is made of a material that does not readily retain nor permit penetration of asbestos fibres.
  - .2 Consists of head covering and full body covering that fits snugly at the ankles, wrists and neck.
  - .3 Once coveralls are worn, treat and dispose of as contaminated waste.
  - .4 Is replaced or repaired if torn or ripped.
- .4 Use hard hats, safety footwear and other protective equipment and apparel required by applicable construction safety regulations.

**1.16 Visitor Protection**

- .1 Provide clean protective clothing and equipment to Authorized Visitors.
- .2 Instruct Authorized Visitors in the use of protective clothing and Abatement Work Area entry and exit procedures.
- .3 Authorized visitors are required to be fit tested on respirators, prior to entering Abatement Work Area:
  - .1 Respirator worn must be compliant with Section 13 and Table 2 of O.Reg. 278/05.

### **1.17 Signage**

- .1 Asbestos Abatement Signs: Post signs at access points to the Abatement Work Area, stating at minimum, the following:
  - .1 There is an asbestos dust hazard.
  - .2 Access to the work area is restricted to persons wearing protective clothing and equipment.
- .2 Vehicles, Bins and Asbestos Waste Containers: Post signs on both sides of every vehicle used for the transportation of asbestos waste and on every asbestos waste container. Signs must display thereon in large, easily legible letters that contrast in colour with the background the word “CAUTION” in letters not less than ten centimetres in height and the words:
  - .1 CONTAINS ASBESTOS FIBRES
  - .2 Avoid Creating Dust and Spillage
  - .3 Asbestos May be Harmful To Your Health
  - .4 Wear Approved Protective Equipment.
- .3 Place placards in accordance with Transportation of Dangerous Goods Act.

### **1.18 Waste and Material Handling**

- .1 Waste bins must be placed on grade or in receiving.
- .2 All bins for hazardous materials must be covered and locked when waste transfer is not being performed.
- .3 Ensure redundant non-ACM, rubble, debris, etc. removed during contaminated work are treated, packaged, transported and disposed of as appropriate waste.
- .4 Clean, wash and apply Post Removal Sealant to metal waste prior to removal from Abatement Work Area. Recycle metals.
- .5 Clean, wash and apply Post Removal Sealant to non-porous materials prior to disposal as clean waste. Obtain prior written approval from the Abatement Consultant for each individual type of material.
- .6 Clean and wash equipment prior to removal from Abatement Work Area if removed prior to completion.
- .7 Place all equipment, tools and unused materials that cannot be cleaned in Abatement Waste Containers.
- .8 As work progresses, and at regular intervals, transport the sealed and labelled waste containers from the Abatement Work Area to waste bin.

- .9 Place items in bins according to waste classification. Place asbestos waste, lead waste, metals, non-asbestos waste, etc. in separate bins.
- .10 Removal of waste containers and decontaminated tools and materials from the Abatement Work Area shall be performed as follows:
  - .1 Remove any visible contamination from the surface of non-porous or cleanable waste being removed from the Abatement Work Area. If the item can be cleaned, remove it from the site as clean waste.
  - .2 Place waste or item in Waste Container and seal closed.
  - .3 Wet wipe outside of Waste Container.
  - .4 At the perimeter of the Abatement Work Area, place in second Waste Container. Seal closed.
  - .5 Remove waste containers and transport to appropriate bin.
- .11 Transport waste and materials via the predetermined routes and exits. Arrange waste transfer route with Owner. Use a closed, covered cart to transport through Occupied Areas.
- .12 Provide workers transporting waste with means to access full personal protective equipment and all tools required to properly clean up spilled material in the case of a rupture of a Waste Container.
- .13 Pick-up and drop off of garbage bin shall be at pre-approved times and must not interfere with the Owners operations.
- .14 Transport hazardous waste to landfill or waste transfer station licensed by the provincial Ministry of the Environment.
- .15 Cooperate with the provincial Ministry of the Environment inspectors and immediately carry out instructions for remedial work at dump to maintain environment, at no additional cost to the Owner.

#### **1.19 Re-establishment of Objects and Systems**

- .1 Re-establish objects and items relocated by the Contractor's workforce to facilitate work.
- .2 Make good at completion of work, all damage not identified in pre-removal survey.



## **PART 2        PRODUCTS AND FACILITIES**

### **2.1            Materials and Equipment**

- .1        Refer to the Sections identified in Related Work for specified materials, equipment or facilities specific to each Abatement Work Area.
- .2        Materials and equipment must be in good condition and free of debris and fibrous materials. Disposable items must be of new materials only.
- .3        Airless Sprayer: AC powered pressure washer that allows wetting agent to mix with water, uses no air or compressed air, and has a nozzle to regulate power and pressure.
- .4        Amended Water: Water with wetting agent added for purpose of reducing surface tension to allow thorough wetting of materials.
- .5        Asbestos Waste Container: A container acceptable to disposal site, Ministry of the Environment, and Ministry of Labour, Immigration, Training and Skill Development, comprised of the following:
  - .1        Dust tight.
  - .2        Suitable for the type of waste.
  - .3        Impervious to asbestos.
  - .4        Identified as asbestos waste.
- .6        HEPA Vacuum: Vacuum with necessary fittings, tools and attachments. Discharged air must pass through a HEPA filter.
- .7        Polyethylene Sheeting: 6 mil (0.15 mm) minimum thickness unless otherwise specified, in sheet size to minimize joints.: 6 mil (0.15 mm) minimum thickness unless otherwise specified, in sheet size to minimize joints.
- .8        Post Removal Sealant (or Lockdown): Sealant that when applied to surfaces serves the function of trapping residual asbestos fibres or other dust. Product must have flame spread and smoke development ratings both less than 50. Product shall leave no stain when dry. Post Removal Sealant shall be compatible with replacement insulation or fireproofing where required and capable of withstanding service temperature of substrate. Apply to manufacturer's instructions.
- .9        Protective Clothing: Disposable coveralls complete with head covering and full body covering that fits snugly at the ankles, wrists and neck.
- .10       Rip-Proof Polyethylene Sheeting: 8 mil (0.20 mm) fabric made up from 5 mil (0.13 mm) weave and two (2) layers of 1.5 mil (0.05 mm) poly laminate or approved equal. In sheet size to minimize on-site seams and overlaps.
- .11       Sprayer: Garden type portable manual sprayer or water hose with spray attachment if suitable.

- .12 Tape: Duct tape or tape suitable for sealing polyethylene to surfaces under both dry and wet conditions in the presence of Amended Water.
- .13 Wetting Agent: Non-sudsing surfactant added to water to reduce surface tension and increase wetting ability.

### **PART 3 EXECUTION**

- .1 Refer to the Sections identified in Related Work for specified procedures for work area preparation, maintenance, site dismantlement, application of lock-down agent and all other procedures for the safe handling, removal and clean-up of hazardous materials specific to each phase or work area.

### **END OF SECTION**

\\pinchin.com\pet\Job\367000s\0367131.000 KPRDSB,2026,VariousSchools,HAZ,CONS\0367131.004 KPRDSB,GraftonPS,654Station,HAZ,CONS\Deliverables\Spec\02 81 00 Hazardous Materials - General Provisions ON.docx

## **PART 1 GENERAL**

### **1.1 General and Related Work**

- .1 Read this Section in conjunction with all drawings and all other Sections so as to comply with the requirements of Division 1 and the General Conditions of the Contract.
- .2 Requirements specified elsewhere:
  - .1 Section 02 81 00 Hazardous Materials – General Provisions
  - .2 Section 02 81 00.02 Asbestos Abatement – Type 2 Procedures

### **1.2 Outline of Work**

- .1 Refer to Section 02 81 00 Hazardous Materials – General Provisions for the Outline of Work.
- .2 Refer to Drawings HM-01 through HM-03 for the extent of the Abatement Work Areas.
- .3 The intent of this Section is to provide safe work practices and procedures to govern the handling, removal, clean-up and disposal of asbestos-containing materials following Type 1 procedures, and Pinchin and Owner specific requirements.

### **1.3 Personal Protection**

- .1 Protect all personnel at all times when possibility of disturbance of ACM exists:
  - .1 Provide non-powered half-face respirators with P100 high efficiency (HEPA) cartridge filters when requested by personnel.
  - .2 When requested by personnel, provide protective clothing.
- .2 Provide protective clothing, to all personnel entering the Abatement Work Area.
- .3 Wear hard hats, safety shoes and other personal protective equipment required by applicable construction safety regulations.

### **1.4 Site Reviews**

- .1 Refer to Part 1.12 Site Reviews in Section 02 81 00 – General Provisions:
  - .1 Milestone Review - Visual Clearance

## **PART 2 PRODUCTS AND FACILITIES**

- .1 Refer to Section 02 81 00.

## **PART 3 EXECUTION**

### **3.1 Site Preparation**

- .1 Moving of equipment, tools, supplies, and stored materials that can be performed without disturbing ACM will be performed by others.
- .2 Remove visible dust from all surfaces in the work area including those to be worked on, using HEPA Vacuums or wet wiping.
- .3 Install polyethylene drop sheets below areas of work.
- .4 Provide power from ground fault interrupt circuits.
- .5 Provide amended water for wetting ACM, and adequate method of wetting (garden sprayers, airless sprayers, etc.).

### **3.2 Maintenance of Abatement Work Area**

- .1 Maintain Abatement Work Area in tidy condition.
- .2 Remove any standing water on polyethylene/floor at the end of every shift.

### **3.3 Asbestos Removal - General**

- .1 Do not use powered tools or non-hand held tools.
- .2 Do not use compressed air to clean or remove dust or debris.
- .3 Do not break, cut, drill, abrade, grind, sand or vibrate ACM if it cannot be wetted. Type 2 procedures would be required if the material cannot be wetted due to hazard or damage.
- .4 Wet ACM prior to work and keep ACM wet throughout the removal process.
- .5 Frequently and at regular intervals during the work, clean up dust and waste using HEPA vacuums and/or wet sweeping or mopping.
- .6 Frequently and at regular intervals, place all waste in asbestos waste containers.
- .7 Immediately upon completion of work, clean area with HEPA vacuum and/or wet sweeping or mopping.

### **3.4 Asbestos Removal – Tar on Ducting**

- .1 Wet all material to be disturbed.
- .2 Break material only if unavoidable, and wet material if broken during work.
- .3 Use only non-powered hand-held tools to remove ACM.
- .4 Scrape to remove material adhered to substrate.
- .5 Place removed ACM directly into an asbestos waste container.

### **3.5 Abatement Work Area Dismantling**

- .1 Wash or HEPA vacuum equipment and tools used in contaminated Abatement Work Area to remove all asbestos contamination, or place in Asbestos Waste Containers prior to being removed from Abatement Work Area.
- .2 Place tools and equipment used in contaminated work site but not cleaned in polyethylene bags prior to removal from Abatement Work Area.
- .3 Clean polyethylene sheeting and drop sheets which with HEPA vacuum or wet cleaning methods at completion of work.
- .4 Wet drop sheets and polyethylene sheeting.
- .5 Carefully roll polyethylene sheeting and drop sheets toward the centre. As polyethylene is rolled away, immediately remove visible debris beneath with a HEPA vacuum.
- .6 Remove remaining polyethylene sheeting and tape.
- .7 Place polyethylene sheeting, drop sheets, tape, disposal clothing and other contaminated waste in asbestos waste containers, wet wipe and place in second asbestos waste container.

### **3.6 Waste and Material Handling**

- .1 Refer to Section 02 81 00.

### **END OF SECTION**

\\pinchin.com\pet\Job\367000s\0367131.000 KPRDSB,2026,VariousSchools,HAZ,CONS\0367131.004  
KPRDSB,GraftonPS,654Station,HAZ,CONS\Deliverables\Spec\02 82 00.01 Asbestos Abatement - Type 1 Precautions ON.docx

## **PART 1 GENERAL**

### **1.1 General and Related Work**

- .1 Read this Section in conjunction with all drawings and all other Sections so as to comply with the requirements of Division 1 and the General Conditions of the Contract.
- .2 Requirements specified elsewhere:
  - .1 Section 02 81 00 Hazardous Materials – General Provisions
  - .2 Section 02 82 00.01 Asbestos Abatement – Type 1 Precautions

### **1.2 Outline of Work**

- .1 Refer to Section 02 81 00 Hazardous Materials – General Provisions for the Outline of Work.
- .2 Refer to Drawing HM-01 through HM-03 for the extent of the Abatement Work Areas.
- .3 The intent of this Section is to provide safe work practices and procedures to govern the handling, removal, clean-up and disposal of asbestos-containing materials following Type 2 procedures, and Pinchin and Owner specific requirements.

### **1.3 Personal Protection**

- .1 Protect all personnel at all times when possibility of disturbance of ACM exists.
- .2 Provide the following minimum respiratory protection to all personnel:
  - .1 Non-powered half-face respirators with P100 high efficiency (HEPA) cartridge filters.
- .3 Provide protective clothing, to all personnel entering the Abatement Work Area.
- .4 Wear hard hats, safety shoes and other personal protective equipment required by applicable construction safety regulations.

### **1.4 Site Reviews**

- .1 Refer to Part 1.13 Site Reviews in Section 02 81 00 – General Provisions.
- .2 The following Milestone Site Reviews are to be scheduled:
  - .1 Milestone Review - Clean Site Preparation
  - .2 Milestone Review – Bulk Removal Review
  - .3 Milestone Review - Visual Clearance
  - .4 Milestone Review – Post Abatement Sampling

## **PART 2 PRODUCTS AND FACILITIES**

- .1 Refer to Section 02 81 00.

### **2.2 Hoarding Walls**

- .1 Type A Hoarding Wall: One layer of rip-proof polyethylene sheeting installed floor to ceiling, secured with telescopic poles, clips, or other suitable methods.
- .2 Windows: Install sufficient transparent windows area in hoarding walls to allow observation of entire work area from outside the enclosure where existing solid walls do not make up the perimeter.

## **2.3 Transfer Room**

- .1 Install vented wood door in wood frame at doorway to Occupied Area. Door must have locking passage set:
  - .1 Provide a lock box with key to the door.
  - .2 Provide lock box code to Abatement Consultant and Owner.
- .2 Transfer Room to be generally 2000 mm x 2000 mm x 2200 mm high. Increase size accordingly to accommodate number of workers.
- .3 Install walls as follows:
  - .1 Install 38 x 89 mm wood framing at 610 mm o/c with continuous top and sill plates.
  - .2 Install one layer rip-proof polyethylene sheeting on interior walls of Transfer Room.
- .4 Install one layer of rip-proof polyethylene sheeting over two layers of 6 mil polyethylene sheeting beneath entire Transfer Room.
- .5 Install one layer rip-proof polyethylene sheeting over roof.
- .6 Turn 600 mm of polyethylene down the sides over polyethylene on the perimeter walls.

## **2.4 Curtained Doorways**

- .1 Construct as follows:
  - .1 Install two flap doors, full width and height of door opening at all doors to Abatement Work Area and both ends of Transfer Room.
  - .2 Construct each flap door of two layers of polyethylene sheeting with all edges reinforced with tape. Use wood strapping to securely fasten flap doors to head and alternate jambs.
  - .3 Install weights attached to bottom edge of each door flap.
  - .4 Provide direction arrows on flaps to indicate opening.

## **PART 3 EXECUTION**

### **3.1 Site Preparation - General**

- .1 Remove stored or non-fixed items from the Abatement Work Area including but not limited to equipment, furniture, waste etc. Store in area provided by Owner.
- .2 Moving of equipment, tools, supplies, and stored materials that can be performed without disturbing ACM will be performed by others.
- .3 Remove visible dust and friable material from all surfaces in the work area including those to be worked on, using HEPA Vacuums or wet wiping.
- .4 Isolate, at panel, and disconnect existing power supply to Abatement Work Area. Power supply to remaining areas of building must not be disrupted during work of this section:
  - .1 Lock-out/tag-out power at electrical panels.
  - .2 Mark/tag any items within or passing through the Abatement Work Area that are to remain live including but not limited to cable, conduit, wire, fixtures, equipment panels, etc.
- .5 Provide power from ground fault interrupt circuits.

- .6 Shut down HVAC systems serving the Abatement Work Area:
  - .1 Install polyethylene sheeting over openings in ducts and diffusers and seal.
  - .2 HVAC to remaining areas of building must not be disrupted during work of this section.
  - .3 System shall remain inoperative until completion of work, unless ducts can be effectively capped.
  - .4 Perform work at scheduled times after shutting down HVAC systems affecting the Abatement Work Area.

- .7 Provide amended water for wetting ACM, and adequate method of wetting (garden sprayers, airless sprayers, etc.).

### **3.2 Site Preparation –Enclosure Required**

- .1 Install polyethylene enclosure complete with Windows at Abatement Work Areas for the following work:
  - .1 Removal of drywall with asbestos-containing joint compound (greater than 1 square metre).
- .2 Seal openings in floor using tape, caulking, polyethylene, etc. Floor openings are to be sealed independently prior to installation of floor polyethylene.
- .3 Install polyethylene sheeting on floors of Abatement Work Area. Use sufficient layers to provide adequate protection for carpeting and equipment:
  - .1 Minimum requirement over carpet is one layer of 6 mil polyethylene under one layer of rip-proof polyethylene.
  - .2 Cover floors first so that polyethylene on walls is overlapped by at least 305 mm.
- .4 Construct Type A Hoarding Walls between Abatement Work Area perimeter and occupied areas.
- .5 Install polyethylene sheeting at openings in walls (as required) and seal.
- .6 Install 6 mil polyethylene sheeting on walls within the Abatement Work Area., including existing walls that make up, or are within, the Abatement Work Area.
- .7 Extend to underside of ceiling system, enclosures for access into ceilings. Enclosure may be supported from the ceiling system if ceiling can support the polyethylene.
- .8 Install Curtained Doorways.
- .9 Install Transfer Room.
- .10 Install temporary lighting in enclosure to a level that will provide for safe and efficient use of work area - minimum 550 LUX.
- .11 Establish negative pressure in Abatement Work Areas as follows:
  - .1 Provide sufficient HEPA filtered negative pressure machines to exchange a volume of air equivalent to that of the Abatement Work Area a minimum of every 20 minutes.
  - .2 Provide additional HEPA filtered negative pressure machines as required to ensure air flow from Occupied Area into Abatement Work Area.
  - .3 Arrange negative air units to maximize the distance between units and decontamination facilities.



- .4 Provide weighted flaps in perimeter Hoarding Walls as necessary to provide make-up air.
- .5 Operate HEPA filtered negative pressure machines continuously from first disturbance of ACM until completion of dismantling.
- .6 Replace prefilters to maintain specified flow rate.
- .7 Replace HEPA filter as required to maintain flow rate and integrity of unit.
- .8 Discharge HEPA filtered negative air machines as follows:
  - .1 To building exterior:
    - .1 Direct discharge away from building access points.
- .12 Place required tools to complete the abatement with the Abatement Work Area.
- .13 Install Signage in clearly visible locations and in sufficient numbers to adequately warn of an asbestos dust hazard.

### **3.3 Maintenance of Abatement Work Area**

- .1 Inspect polyethylene sheeting and ensure it is effectively sealed and taped. Repair damage and remedy defects immediately.
- .2 Inspect electrical panels and ensure locks and tags are on panels prior to entering the Abatement Work Area.
- .3 Inspect HEPA filtered negative pressure machines including discharge ducting at the beginning and end of each working period. Review must be performed by competent person.
- .4 Maintain Abatement Work Area in tidy condition.
- .5 Remove standing water on polyethylene/floor at the end of every shift.

### **3.4 Asbestos Removal - General**

- .1 Do not use compressed air to clean or remove dust or debris.
- .2 Frequently and at regular intervals during the work, clean up dust and waste using HEPA vacuums and/or wet sweeping or mopping.
- .3 Frequently and at regular intervals, place all waste in asbestos waste containers.
- .4 Immediately upon completion of work, clean area with HEPA vacuum and/or wet sweeping or mopping.

### **3.5 Asbestos Removal - Drywall with Asbestos Drywall Joint Compound (greater than 1 square metre)**

- .1 Use the procedures described above under *Site Preparation –Enclosure Required*.
- .2 Protect drywall around area to be removed by covering with polyethylene and taping seams to wall.
- .3 Cut drywall and remove using non-powered hand-held tools. Place directly into polyethylene waste bag, or sealed container until at waste bin.
- .4 Remove all screws and fasteners in studs or strapping.
- .5 Wet clean and HEPA vacuum removed screws and fasteners in studs or strapping to be recycled.

- .6 Wet clean or HEPA vacuum the entire Abatement Work Area, including surfaces not covered with polyethylene sheeting. Any materials or equipment removed to access ACM that are to be reused, must be wet cleaned or vacuumed prior to reinstatement.

### **3.6 Abatement Work Area Dismantling**

- .1 Wash or HEPA vacuum equipment and tools used in contaminated Abatement Work Area to remove all asbestos contamination, or place in Asbestos Waste Containers prior to being removed from Abatement Work Area.
- .2 Place tools and equipment used in contaminated work site but not cleaned in polyethylene bags prior to removal from Abatement Work Area.
- .3 Clean polyethylene sheeting and drop sheets which with HEPA vacuum or wet cleaning methods at completion of work.
- .4 Wet drop sheets and polyethylene sheeting.
- .5 Carefully roll polyethylene sheeting and drop sheets toward the centre of enclosure. As polyethylene is rolled away, immediately remove visible debris beneath with a HEPA vacuum.
- .6 Remove remaining polyethylene sheeting and tape and dispose of as asbestos waste.
- .7 Place polyethylene sheeting, drop sheets, tape, disposal clothing and other contaminated waste in asbestos waste containers, wet wipe and place in second asbestos waste container.
- .8 Remove remaining site isolation, seals, tape, etc.
- .9 Remove seals, tape, Signage etc.
- .10 Seal openings in HEPA vacuums.
- .11 Remove HEPA filtered negative pressure machines and discharge ducting or HEPA vacuums.
- .12 Place contaminated materials including polyethylene sheeting, drop sheets, seals, tape, disposable coveralls, and other contaminated waste in asbestos waste containers.

### **3.7 Waste and Material Handling**

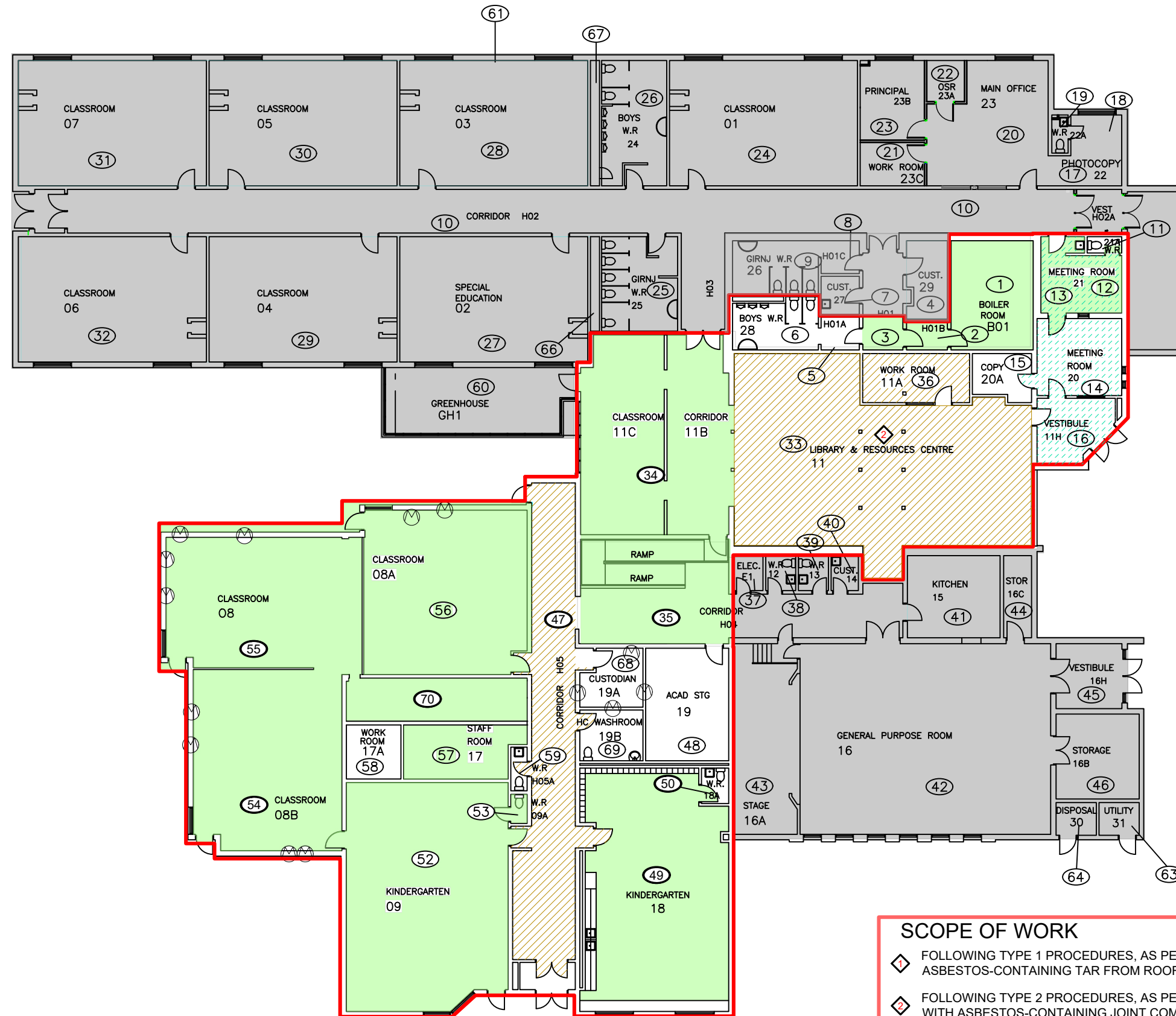
- .1 Refer to Section 02 81 00.

### **3.8 Re-Establishment of Items**

- .1 Upon completion of work:
  - .1 Move items that were removed from Abatement Work Area prior to work, back into same location within Abatement Work Area.
  - .2 Clean, mop and vacuum Abatement Work Area and area beneath any tunnels, platform and Decontamination Facilities.

### **END OF SECTION**

\\pinchin.com\pet\Job\367000s\0367131.000 KPRDSB,2026,VariousSchools,HAZ,CONS\0367131.004 KPRDSB,GraftonPS,654Station,HAZ,CONS\Deliverables\Spec\02 82 00.02 Asbestos Abatement - Type 2 Precautions ON.docx



#### LEGEND

- (X) PINCHIN LOCATION NUMBER
- SURVEY BOUNDARY/ASSESSED AREA
- OUTSIDE ASSESSMENT SCOPE
- ASBESTOS-CONTAINING MATERIALS:
- TEXTURE COAT
  - DRYWALL JOINT COMPOUND
  - PAINT
- FOR CLARITY, THE FOLLOWING ASBESTOS-CONTAINING MATERIALS, ARE PRESENT IN THE ASSESSED AREA, BUT HAVE NOT BEEN HATCHED ON THE DRAWING:
- VINYL FLOOR TILE AND MASTIC
  - PIPE INSULATION

NOT ALL KNOWN OR SUSPECTED HAZARDOUS BUILDING MATERIALS MAY BE DEPICTED ON THE DRAWING. REFER TO THE HAZARDOUS BUILDING MATERIALS ASSESSMENT REPORT FOR A COMPLETE LIST OF KNOWN AND SUSPECTED HAZARDOUS BUILDING MATERIALS.

LEGEND IS COLOUR DEPENDENT. NON-COLOUR COPIES MAY ALTER INTERPRETATION.



PROJECT NAME:  
HAZARDOUS BUILDING MATERIALS ASSESSMENT SPECIFICATIONS

CLIENT NAME:  
KAWARTHA PINE RIDGE DISTRICT SCHOOL BOARD

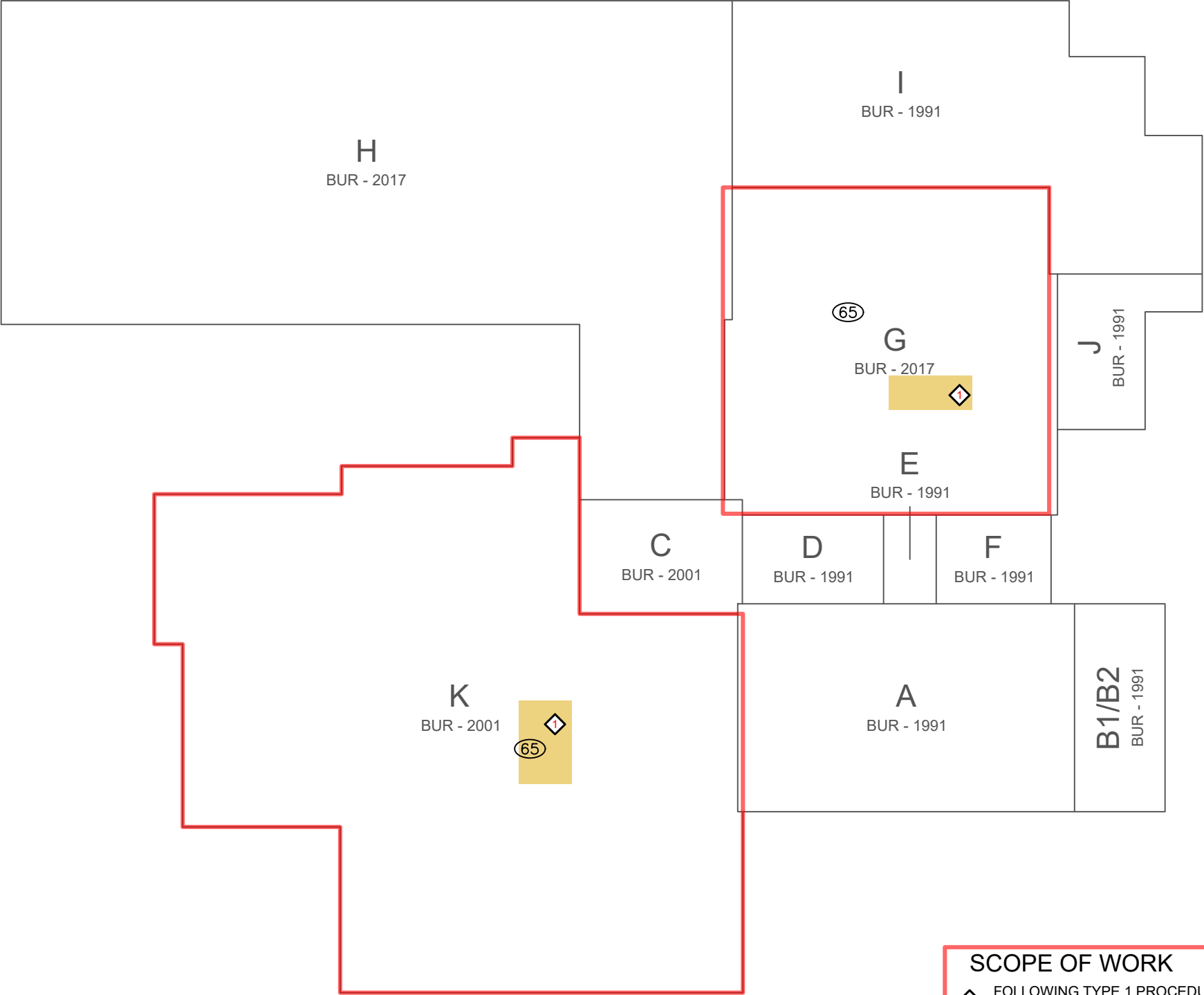
PROJECT LOCATION:  
GRAFTON PUBLIC SCHOOL,  
654 STATION ROAD,  
GRAFTON, ONTARIO

FIGURE NAME:  
SAMPLE LOCATIONS  
GROUND FLOOR

PROJECT NUMBER: 367131.004	SCALE: NOT TO SCALE
DRAWN BY: NJ	REVIEWED BY: SY
DATE: DECEMBER 2025	FIGURE NUMBER: HM-01

#### SCOPE OF WORK

- FOLLOWING TYPE 1 PROCEDURES, AS PER O.REG. 278/05, REMOVE ASBESTOS-CONTAINING TAR FROM ROOFTOP AHU DUCTING
- FOLLOWING TYPE 2 PROCEDURES, AS PER O.REG. 278/05, REMOVE DRYWALL WITH ASBESTOS-CONTAINING JOINT COMPOUND FROM CEILING



- SCOPE OF WORK
- 1

FOLLOWING TYPE 1 PROCEDURES, AS PER O.REG. 278/05, REMOVE ASBESTOS-CONTAINING TAR FROM ROOFTOP AHU DUCTING
- 2

FOLLOWING TYPE 2 PROCEDURES, AS PER O.REG. 278/05, REMOVE DRYWALL WITH ASBESTOS-CONTAINING JOINT COMPOUND FROM CEILING

LEGEND

PINCHIN LOCATION NUMBER

SURVEY BOUNDARY/ASSESSED AREA

ASBESTOS-CONTAINING MATERIALS:

TAR

FOR CLARITY, THE FOLLOWING ASBESTOS-CONTAINING MATERIALS, ARE PRESENT IN THE ASSESSED AREA, BUT HAVE NOT BEEN HATCHED ON THE DRAWING:

•

CAULKING

NOT ALL KNOWN OR SUSPECTED HAZARDOUS BUILDING MATERIALS MAY BE DEPICTED ON THE DRAWING. REFER TO THE HAZARDOUS BUILDING MATERIALS ASSESSMENT REPORT FOR A COMPLETE LIST OF KNOWN AND SUSPECTED HAZARDOUS BUILDING MATERIALS.

LEGEND IS COLOUR DEPENDENT. NON-COLOUR COPIES MAY ALTER INTERPRETATION.

BASE PLAN PROVIDED BY CLIENT.

PROJECT NAME:

HAZARDOUS BUILDING MATERIALS ASSESSMENT SPECIFICATIONS

CLIENT NAME:

KAWARTHA PINE RIDGE DISTRICT SCHOOL BOARD

PROJECT LOCATION:

GRAFTON PUBLIC SCHOOL,  
654 STATION ROAD,  
GRAFTON, ONTARIO

FIGURE NAME:

SAMPLE LOCATIONS  
ROOF

PROJECT NUMBER:  
367131.004

SCALE:  
NOT TO SCALE

DRAWN BY:  
NJ

REVIEWED BY:  
SY

DATE:  
DECEMBER 2025

FIGURE NUMBER:  
HM-02



LEGEND

NOT ALL KNOWN OR SUSPECTED HAZARDOUS BUILDING MATERIALS MAY BE DEPICTED ON THE DRAWING. REFER TO THE HAZARDOUS BUILDING MATERIALS ASSESSMENT REPORT FOR A COMPLETE LIST OF KNOWN AND SUSPECTED HAZARDOUS BUILDING MATERIALS.

LEGEND IS COLOUR DEPENDENT. NON-COLOUR COPIES MAY ALTER INTERPRETATION.

BASE PLAN PROVIDED BY CLIENT.



PROJECT NAME:  
HAZARDOUS BUILDING MATERIALS ASSESSMENT SPECIFICATIONS

CLIENT NAME:  
KAWARTHA PINE RIDGE DISTRICT SCHOOL BOARD

PROJECT LOCATION:  
GRAFTON PUBLIC SCHOOL,  
654 STATION ROAD,  
GRAFTON, ONTARIO

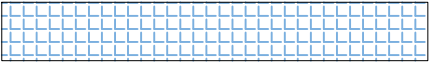
FIGURE NAME:  
ROOF COMPOSITION

PROJECT NUMBER: 367131.004	SCALE: NOT TO SCALE
-------------------------------	------------------------

DRAWN BY: NJ	REVIEWED BY: SY
-----------------	--------------------

DATE: DECEMBER 2025	FIGURE NUMBER: HM-03
------------------------	-------------------------

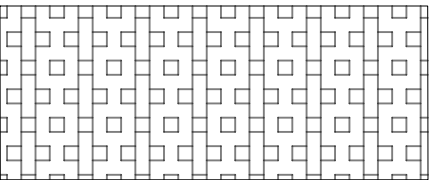
ROOF SECTION - K



4 - PLY FELT



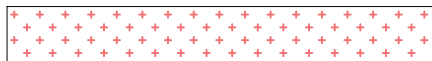
1" FIBER GLASS



2" POLY ISO



DENSE DECK

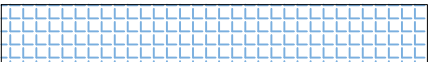


KRAFT VAPOUR BARRIER



STEEL DECK

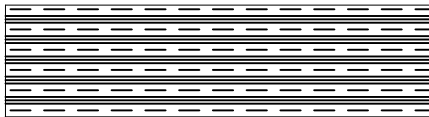
ROOF SECTION - G



4 - PLY FELT



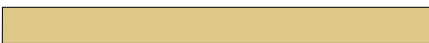
1" FIBERBOARD



2" FIBER GLASS



MOP DOWN VAPOUR RETARDER



WOOD DECK

SCOPE OF WORK

- 1

FOLLOWING TYPE 1 PROCEDURES, AS PER O.REG. 278/05, REMOVE ASBESTOS-CONTAINING TAR FROM ROOFTOP AHU DUCTING
- 2

FOLLOWING TYPE 2 PROCEDURES, AS PER O.REG. 278/05, REMOVE DRYWALL WITH ASBESTOS-CONTAINING JOINT COMPOUND FROM CEILING