

1. EXAMINE THE EXISTING SITE CONDITION TOGETHER WITH THE PROPOSED WORK AND THE COMPLETE EXTENT OF RENOVATIONS TO THE EXISTING BUILDING. INCLUDE THE FOLLOWING PRIOR TO THE START OF WORK INCLUDING BUT NOT LIMITED TO CUTTING, PATCHING, REMOVING, REROUTING OF ALL EXISTING ELECTRICAL EQUIPMENT AND WIRING TO SUCCESSFULLY EXECUTE ALL WORK DESCRIBED.
2. ALL WORK SHALL BE PERFORMED IN ACCORDANCE WITH THE LATEST EDITIONS OF THE 2012 ONTARIO BUILDING CODE, PROVINCIAL ELECTRICAL SAFETY CODE, C.S.A. STANDARD, U.L.C., N.E.P.A., O.S.H.A., AND ALL OTHER APPLICABLE CODES AS REQUIRED.
3. ALL WORK SHALL BE PERFORMED IN ACCORDANCE WITH BASE BUILDING STANDARDS.
4. OBTAIN AND PAY FOR ALL REQUIRED PERMITS AND INSPECTIONS. ALL REQUIRED PERMITS SHALL BE SUBMITTED TO THE LANDLORD PRIOR TO COMMENCING THE WORK.
5. ALL WORK SHALL BE INSTALLED IN A CO-ORDINATED MANNER WITH ALL TRADES.
6. DRAWINGS SHALL NOT BE SCALED FOR MEASUREMENTS.
7. ALL INTERRUPTIONS OF SERVICES TO ANY PART OF THE BUILDING SHALL BE EXECUTED ONLY WITH PRIOR APPROVAL AND ARRANGEMENTS WITH THE BUILDING OWNER OR REPRESENTATIVE. MINIMUM 48HRS. NOTICE REQUIRED. INCLUDE FOR ALL PREMIUM TIME REQUIRED FOR INTERRUPTIONS OF SERVICES, AND REQUIRED TIE-INS TO EXISTING SERVICES.
8. PROVIDE ALL MATERIALS, EQUIPMENT AND LABOUR NECESSARY TO PERFORM THE COMPLETE WORK AS INDICATED.
9. DAMAGE TO ANY SYSTEM OCCURRING DURING EXECUTION OF THE WORK SHALL BE RECTIFIED AT THE CONTRACTORS EXPENSE.
10. ALL NEW EQUIPMENT SHALL BE IDENTIFIED WITH LAMACOID PLATES, BLACK BACKGROUND WITH WHITE LETTERING. ALL ON ALL LAMACOID PLATES SHALL BE APPROVED BY THE CONSULTANT AND THE BUILDING OWNER PRIOR TO ENGRAVING.
11. PROVIDE A FULLY ITEMIZED BREAKDOWN OF ALL MATERIALS, EQUIPMENT AND LABOUR FOR SUBMISSIONS OF ALL CHANGES TO THE CONTRACT. CONTRACTOR SHALL UTILIZE NECA 1 LABOUR RATES, AND TRADE PRICES. WORK ASSOCIATED WITH ANY CHANGES TO THE CONTRACT SHALL NOT PROCEED WITH-OUT WRITTEN APPROVAL.
12. PRIOR TO INSTALLATION OF ANY DEVICES, THE CONSULTANT AND OR INTERIOR CONSULTANT SHALL HAVE THE RIGHT TO CHANGE LOCATIONS OF OUTLETS WITHIN 3 METERS ( 10 FEET ) WITH-OUT ANY EXTRA COST TO THE OWNER.
13. PERFORM ALL WORK REQUIRED TO THE FIRE ALARM SYSTEM AS INDICATED. RETAIN THE FORCES OF THE LANDLORD TO VERIFY FINAL CONNECTIONS, TESTING AND VERIFICATION OF ALL WORK. DEVICES SHALL MATCH EXISTING SYSTEM IN CHARACTERISTICS AND TYPES. VERIFY IN ACCORDANCE WITH ULC 524 AND LOCAL AUTHORITIES HAVING JURISDICTION VERIFY F/A BELL CIRCUITS TO ENSURE PROPER OPERATION & COVERAGE.
14. SUBMIT SHOP DRAWINGS, FIVE ( 5 ) COPIES FOR ALL MAJOR EQUIPMENT. SHOP DRAWINGS SHALL BE REVIEWED AND STAMPED FOR ACCEPTANCE BY THE APPROPRIATE TRADE PRIOR TO STAMPED "REVIEWED" BY THE CONSULTANT.
15. ALL WORK SHALL BE PERFORMED IN ACCORDANCE WITH THE APPROVED CONSTRUCTION SCHEDULE.
16. LOCATIONS OF ALL FLOOR PENETRATIONS, INCLUDING CORE DRILLING AND SAW CUTTING SHALL BE OBTAINED ON SITE BY THE INTERIOR CONSULTANT. BUILDING OWNER/LANDLORD, AND STRUCTURAL ENGINEER. ALL NECESSARY APPROVALS PRIOR TO BATT-SCAN AND DRILLING. SUBMIT BATT-SCAN RESULTS FOR LANDLORDS APPROVAL AND OBTAIN 48HRS PRIOR PERMISSION TO COMMENCE CORE DRILLING. INCLUDE FOR ALL COSTS.
17. PROVIDE THE LANDLORD AND TENANT WITH A 1-YEAR WRITTEN WARRANTY FOR ALL LABOUR, MATERIALS AND EQUIPMENT SUPPLIED IN THIS CONTRACT. WARRANTY SHALL COMMENCE AT SUCH TIME THAT THE CONSULTANT DEEMS THE WORK IS ACCEPTABLE.
18. ALL POWER WIRING AND SUPPLY OF STARTERS FOR MECHANICAL EQUIPMENT SHALL BE PROVIDED BY THE LANDLORD. ALL CONTROL WIRING, UNLESS OTHERWISE NOTED, ALL CONTROL WIRING AND CONTROL DEVICE BE PROVIDED BY MECHANICAL CONTRACTOR. CONFIRM AND CO-ORDINATE ALL POWER CHARACTERISTICS MECHANICAL CONTRACTOR PRIOR TO PROCESSING SHOP DRAWINGS AND EQUIPMENT ORDERING.
19. PROVIDE ALL ACCESS DOORS WHERE REQUIRED TO SERVICE ALL NEW AND EXISTING EQUIPMENT. ACCESS PANELS SHALL BE EQUAL TO LEHAGE AND SHALL BE COMPATIBLE WITH CEILING/WALL TYPE AND FINISH. ACCESS DOORS SHALL BE RECESSED TYPE WITH A DRYWALL INFILL. ELECTRICAL SERVICES ARE TO BE CO-ORDINATED TO MINIMIZE THE NUMBER OF ACCESS LOCATIONS. CO-ORDINATE THE LOCATION AND SIZE WITH THE CONSULTANT. PROVIDE A WRITTEN DRAWING(S) TO THE CONSULTANT FOR REVIEW INDICATING SIZE AND LOCATION OF ALL ACCESS LOCATIONS PRIOR TO PROCEEDING WITH THE INSTALLATION.
20. ALL LUMINAIRES SHALL BE CLEANED AT THE COMPLETION OF THE PROJECT.
21. OBTAIN AND PAY FOR A CAD DISK DRAWING FILES AND ONE SET OF WHITE PRINTS. MARK WHITE PRINTS TO CLEARLY INDICATE THE INSTALLED WORK. AFTER THE WHITE PRINTS HAVE BEEN REVIEWED BY THE CONSULTANT, TRANSFER ALL INFORMATION, COMMENTS AND REVISIONS ONTO THE AS-BUILT CAD FILES. SUBMIT THE COMPLETED RECORD DRAWINGS AND THE CAD FILES TO THE CONSULTANT, WITH ONE SET OF PRINTS TO THE LANDLORD.
22. UPON COMPLETION OF THE WORK, PROVIDE A COPY OF THE LOCAL HYDRO CERTIFICATE, AND FIRE ALARM VERIFICATION. SUBMIT RECORDS TO GENERAL CONTRACTOR AND LANDLORD.
23. PROVIDE TYPE WRITTEN PANELBOARD DIRECTORIES FOR ALL NEW PANELS AND ALL EXISTING PANELS AFFECTED BY THIS RENOVATION.
24. ALL EQUIPMENT AND MATERIALS SHALL BE NEW, UN-USED AND C.S.A. APPROVED.
25. ALL WIRING SHALL BE INSTALLED IN CONDUIT. ARMoured "BX" CABLE MAY BE USED TO A MAXIMUM OF 3 METERS ( 10 FEET ) FOR FLEXIBLE LIGHTING, SWITCHED LEGS, EMERGENCY REMOTE HEADS AND EXIT SIGNS.
26. ALL WIRING SHALL BE COPPER, MINIMUM # 12 AWG RW90.
27. MINIMUM SIZE OF CONDUIT SHALL BE 20a ( 3/4" ) EMT UNLESS OTHERWISE NOTED. INSTALLATION OF CONDUITS SHALL BE PARALLEL TO BUILDING STRUCTURE. RUN CONDUITS CONCEALED IN ALL FINISHED AREAS.
28. PROVIDE COPPER GROUND WIRE IN ALL CONDUIT FOR BRANCH AND FEEDER CIRCUITS.
29. PROVIDE NYLON PULLSTRINGS IN ALL EMPTY CONDUIT.
30. PROVIDE FLEXIBLE METAL CONDUIT FOR ALL CONNECTIONS TO MOTORS, TRANSFORMERS AND GENERATORS.
31. INDEPENDENTLY SUPPORT FROM BUILDING STRUCTURE WITH APPROVED CHAINS ALL NEW SURFACE AND RECESSED LUMINAIRES.
32. PROVIDE A SEPARATE NEUTRAL CONDUCTOR FOR EACH CIRCUIT DO NOT SHARE NEUTRALS.
33. ALL PENETRATIONS THROUGH FLOORS AND FIRE RATED WALLS SHALL BE PACKED AND SEALED WITH APPROVED FIRE MATERIAL AND SILICON SEALANT.
34. WHERE A MANUFACTURER IS NOT SPECIFIED, THE PRODUCTS SHALL BE OF SAME MANUFACTURER AS BASE BUILDING.
35. PROVIDE DIMMERS AS INDICATED. DIMMERS SHALL SUIT THE TYPE AND SIZE OF LOAD. PROVIDE DE-BUZZING COILS FOR ALL NEW DIMMERS.
36. DIMMERS SHALL BE " LUTRON NOVA T " SERIES UNLESS OTHERWISE NOTED.
37. ALL DEVICES AND COVERPLATES SHALL BE PASS & SEYMOUR MODULAR DECORA TYPE. SPECIFICATION GRADE COLOUR TO INTERIOR CONSULTANTS SELECTION. SUBMIT COLOUR SAMPLES.
38. ALL SURFACE FLOOR OUTLETS SHALL BE CANADIAN ELECTRICAL RACEWAYS INC. SERIES 4000 OR WELLMARK EQUAL. COLOUR SHALL BE BLACK.
39. WHERE SWITCHES, DIMMERS, AND RECEPTACLES ARE SHOWN SIDE BY SIDE, PROVIDE GANGED COVERPLATES. GANGED DIMMERS SHALL BE DE-RATED AND INSTALLED AS PER MANUFACTURES INSTRUCTIONS.
40. ENSURE THAT ALL NEUTRALS OF ALL TRANSFORMERS ARE GROUNDED TO THE BUILDING GROUND SYSTEM IN ACCORDANCE WITH TABLE 16A/16B OF THE O.H.E.S.C.
41. ALL TRANSFORMERS, DISTRIBUTION PANELS, AND PANELBOARDS SHALL BE COMPLETE WITH COPPER BUS ( OR WINDINGS ), AND 200 % RATED NEUTRALS.
42. ALL FUSES SHALL BE HRC TYPE " J " WITH TIME DELAY.
43. CIRCUITING SHOWN FOR GROUPING PURPOSES ONLY. VERIFY EXACT CIRCUITS AVAILABLE AND PROVIDE NEW CIRCUITS AND BREAKERS AS REQUIRED. BALANCE LOADS WITH-IN 10% ACROSS PHASES, SUBMIT TEST REPORT FOR REVIEW BY THE CONSULTANT.
44. CO-ORDINATE ALL EQUIPMENT SUPPLIED BY OTHER TRADES TO ENSURE VOLTAGE AND AMPERAGE COMPATIBILITY WITH DESIGN DOCUMENTS PRIOR TO EQUIPMENT BEING ORDERED.
45. PROVIDE TEMPORARY ELECTRICAL POWER AND LIGHTING AS REQUIRED BY THE GENERAL CONTRACTOR CONSTRUCTION MANAGER. CO-ORDINATE REQUIREMENTS FOR PHASING OF WORK.

(E-1) SCALE: N.T.S.

SYMBOL	DESCRIPTION
	NEW LUMINAIRE. TYPE AS NOTED.
	EXISTING LUMINAIRE TO BE REMOVED.
	TRACK LIGHTING C/W NUMBER OF FIXTURES INDICATED.
	FLUORESCENT STRIP LIGHT.
	CEILING MOUNTED (RECESSED OR SURFACE) LUMINAIRE.
	CEILING MOUNTED (RECESSED OR SURFACE) LUMINAIRE.
	WALL MOUNTED LUMINAIRE.
	COMBINATION CEILING MOUNTED EXIT SIGN C/W FACES, ARROWS AND ADJUSTABLE EMERGENCY HEADS.
	WALL MOUNTED EXIT SIGN C/W FACES AND ARROWS AS INDICATED.
	SINGLE POLE LINE VOLTAGE SWITCH.
	3 WAY LIGHT LINE VOLTAGE SWITCH.
	EXHAUST FAN SWITCH C/W PILOT LIGHT.
	LIGHTING OCCUPANCY SENSOR. PASSIVE INFRARED C/W OVERRIDE SWITCH.WALL MOUNTED.
	LIGHTING OCCUPANCY SENSOR. PASSIVE INFRARED C/W OVERRIDE SWITCH. CEILING OR WALL MOUNTED AS SHOWN ON PLAN.
	DIMMER SWITCH. (RATING AND TYPE TO SUIT LOAD). N LIGHT OR EQUAL.
	WALL MOUNTED DUPLEX RECEPTACLE.
	WALL MOUNTED SPLIT RECEPTACLE.
	WALL MOUNTED DUPLEX RECEPTACLE WITH GROUND FAULT INTERRUPTER.
	WALL MOUNTED SINGLE RECEPTACLE VOLTAGE AND AMP AS INDICATED.
	WALL MOUNTED QUAD RECEPTACLE.
	WALL MOUNTED CABLE T.V OUTLET. PROVIDE CABLE T.V. JACK, AND COAXIAL CABLE BACK TO I.T. SERVER ROOM.
	WALL MOUNTED TELEPHONE OUTLET.
	FURNITURE MOUNTED DATA OUTLET.
	WALL MOUNTED DATA OUTLET.
	WALL MOUNTED COMBINATION TELEPHONE/DATA OUTLET.
	CEILING MOUNTED WI-FI UNIT.
	POWER POLE WITH DEVICES AS SHOWN.
	DIRECT CONNECTION TO EQUIPMENT AS INDICATED.
	MOTOR CONNECTION.
	UNFUSED DISCONNECT SWITCH.
	PANEL (RECESSED OR SURFACE).
	TRANSFORMER.
	FIRE ALARM SMOKE DETECTOR.
	FIRE ALARM HEAT DETECTOR.
	FIRE ALARM PULL STATION.
	SURFACE FIRE ALARM HORN.
	SURFACE FIRE ALARM HORN/STROBE.
	SURFACE EMERGENCY LIGHTING BATTERY UNIT C/W LUMINAIRE(S).
	EMERGENCY LIGHTING REMOTE HEADS DOUBLE, AND SINGLE AS NOTED.
	RECESSED SINGLE GANG BACKBOX 1-DENOTES SINGLE GANG, 2-DENOTES DOUBLE GANG. PROVIDE REQUIRED COVERPLATE TO SUIT DEVICE.
	BUZZER/CHIME.
	SECURITY KEYPAD.
	SECURITY KEY SWITCH.
	SECURITY MOTION SENSOR.
	SECURITY CARD READER.
	SECURITY DOOR CONTACT.
	SECURITY ELECTRIC STRIKE.
	SECURITY MOTION SENSOR
	SECURITY CAMERA.
	PUSH BUTTON DOOR RELEASE.
	DENOTES REFER TO NOTE N-1.
	DENOTES OVER COUNTER
	DENOTES EXISTING TO REMAIN.
	DENOTES REFER TO DETAIL#6 ON DRAWING #E-1.

(E-1) SCALE: N.T.S.


DWG. NO.	DESCRIPTION
E-1	ELECTRICAL SPEC., LEGEND, DRAWING LIST, AND DETAILS
E-2	ELECTRICAL DEMOLITION PLANS

E-1 SCALE: N.T.S.


LINETYPE LEGEND

—————	15A LINETYPE DENOTES:	EXISTING TO REMAIN
=====	15A LINETYPE DENOTES:	NEW BY ELECTRICAL CONTRACTOR.

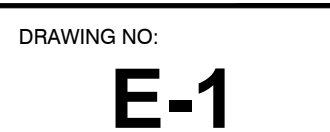
E-1 SCALE: N.T.S.



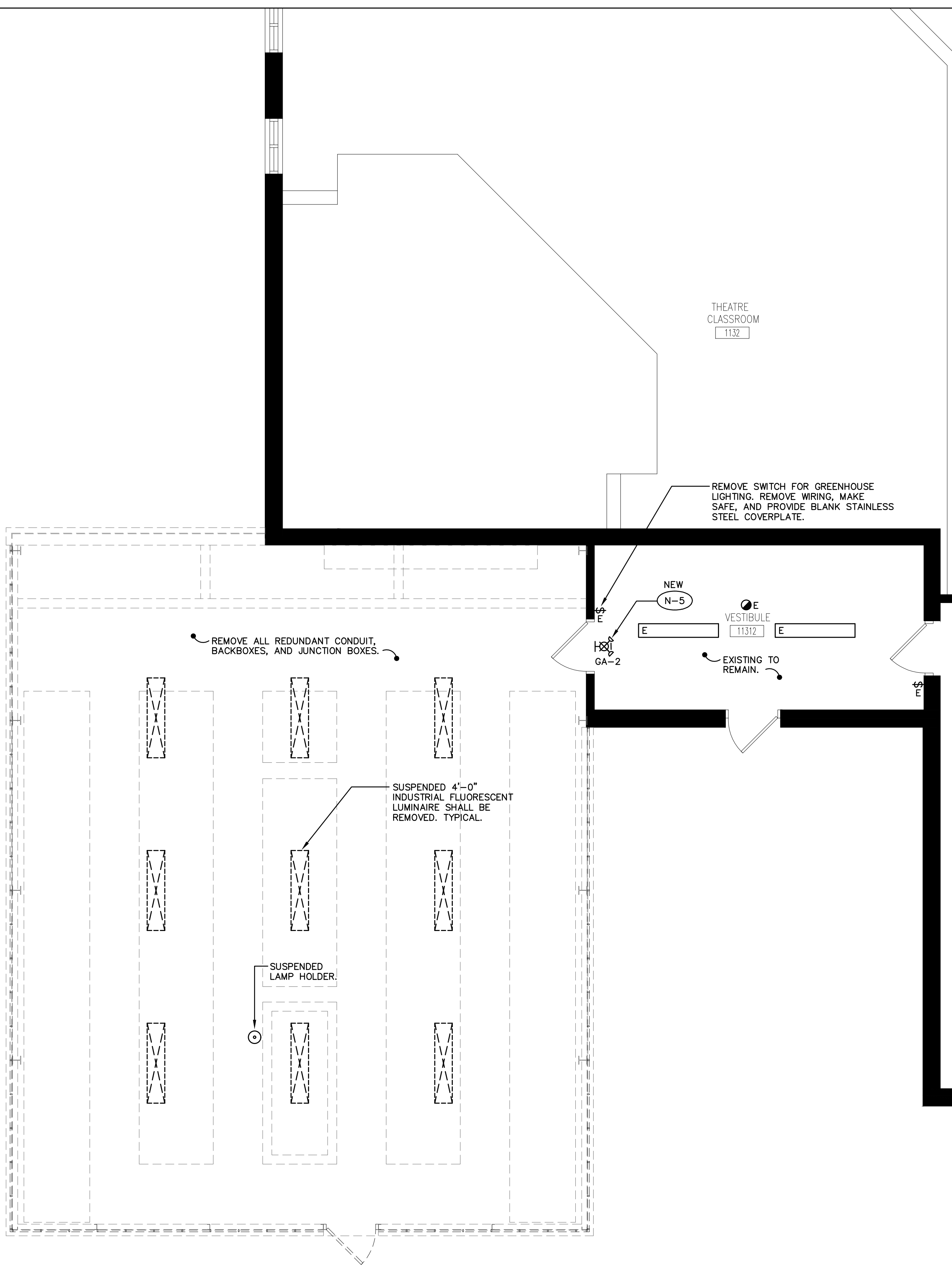
**HPE**  
HASTINGS AND PRINCE EDWARD  
DISTRICT SCHOOL BOARD

DYNAMIC DESIGNS AND ENGINEERING INC.  
  
 111 Hodgson Ave. Kettleby, Ontario L7B 0C7  
 Tel. (905) 841-7278  
[dyneng@rogers.com](mailto:dyneng@rogers.com)

275 FARLEY AVENUE  
BELLEVILLE, ONTARIO  
HASTINGS & PRINCE EDWARD DISTRICT SCHOOL BOARD

ELECTRICAL SPEC.,  
LEGEND, DRAWING LIST,  
AND DETAILS

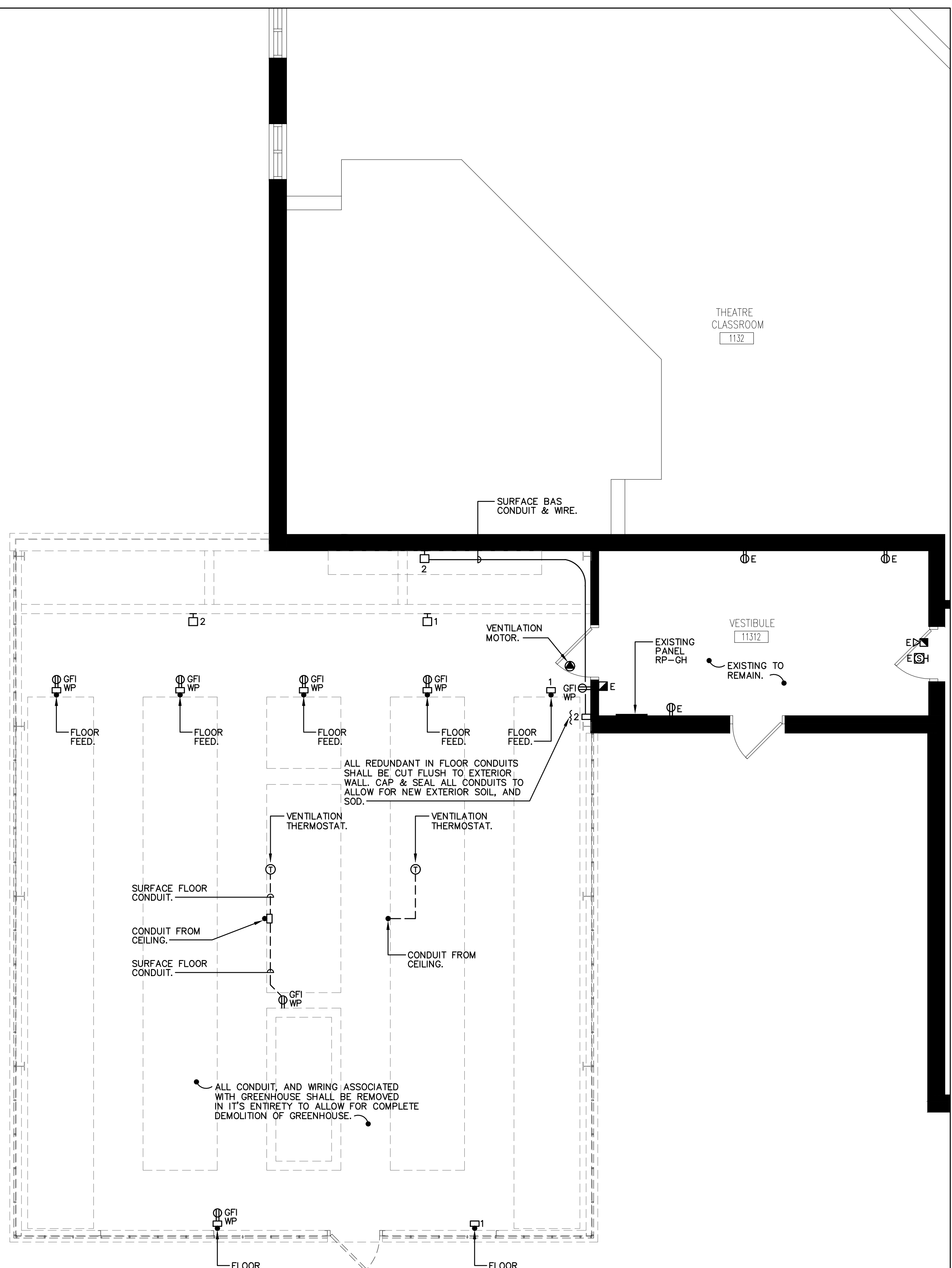




NOTES:

- N-1 COMPLETE EXTENT OF DEMOLITION IS NOT SHOWN. TENDERERS SHALL REVIEW THE SITE TOGETHER WITH THE DOCUMENTS OF ALL OTHER TRADES TO DETERMINE THE COMPLETE EXTENT OF DEMOLITION. MAKE ALLOWANCES FOR ANY NEW OR EXISTING SERVICES, DEVICES, OR EQUIPMENT RELOCATIONS NECESSARY TO COMPLETE THE WORK. ALLOW FOR ALL COSTS.
- N-2 EXISTING DEVICES BEING REMOVED SHALL BE REMOVED C/W ALL ASSOCIATED BACKBOXES, WIRING AND CONDUIT BACK TO ASSOCIATED PANELBOARD/CEILING MOUNTED JUNCTION BOX.
- N-3 ALL DEMOLISHED MATERIALS AND EQUIPMENT SHALL BECOME THE PROPERTY OF THE CONTRACTOR AND SHALL BE REMOVED ENTIRELY FROM THE SITE UNLESS OTHERWISE NOTED.
- N-4 ALL DEVICES, CONNECTIONS, AND LUMINAIRES INDICATED SHALL BE REMOVED C/W ALL ASSOCIATED CONDUIT, AND WIRING.
- N-5 NEW COMBINATION EXIT LIGHT (RUNNING MAN-PICTOGRAM) AND EMERGENCY LIGHTING HEADS AS NOTED. PROVIDE LUMACELL #LSC-1250-W-2-LD10-120. CONNECT TO NEW 120V CIRCUIT AS NOTED.

1 LIGHTING DEMOLITION PLAN-ELECTRICAL  
E-2 SCALE: 1: 50



NOTES:

- N-1 COMPLETE EXTENT OF DEMOLITION IS NOT SHOWN. TENDERERS SHALL REVIEW THE SITE TOGETHER WITH THE DOCUMENTS OF ALL OTHER TRADES TO DETERMINE THE COMPLETE EXTENT OF DEMOLITION. MAKE ALLOWANCES FOR ANY NEW OR EXISTING SERVICES, DEVICES, OR EQUIPMENT RELOCATIONS NECESSARY TO COMPLETE THE WORK. ALLOW FOR ALL COSTS.
- N-2 EXISTING DEVICES BEING REMOVED SHALL BE REMOVED C/W ALL ASSOCIATED BACKBOXES, WIRING AND CONDUIT BACK TO ASSOCIATED PANELBOARD/CEILING MOUNTED JUNCTION BOX.
- N-3 ALL DEMOLISHED MATERIALS AND EQUIPMENT SHALL BECOME THE PROPERTY OF THE CONTRACTOR AND SHALL BE REMOVED ENTIRELY FROM THE SITE UNLESS OTHERWISE NOTED.
- N-4 ALL DEVICES, AND CONNECTIONS INDICATED SHALL BE REMOVED C/W ALL ASSOCIATED CONDUIT, AND WIRING.

2 POWER & SYSTEMS DEMOLITION PLAN-ELECTRICAL  
E-2 SCALE: 1: 50

DO NOT SCALE THE DRAWINGS.  
CHECK AND VERIFY ALL DIMENSIONS AT THE SITE.  
ALL DRAWINGS, SPECIFICATIONS AND RELATED DOCUMENTS ARE THE COPYRIGHT PROPERTY OF THE CONSULTANT AND MUST BE RETURNED UPON REQUEST. REPRODUCTION OF DRAWINGS IN PART OR WHOLE WITHOUT THE PERMISSION OF THE CONSULTANT IS FORBIDDEN.  
DRAWINGS ARE NOT TO BE USED FOR CONSTRUCTION UNTIL SIGNED AND SEALED BY THE CONSULTANT.



NO.	ISSUES	DATE	BY
1	ISSUED FOR REVIEW	MAR 24 2025	TM
2	ISSUED FOR PERMIT & TENDER	MAR 28 2025	TM


NO.	REVISIONS	DATE	BY

DYNAMIC DESIGNS AND ENGINEERING INC.  
♦♦♦  
111 Hodgson Ave. Kettleby, Ontario L7B 0C7  
Tel. (905) 841-7278  
dyneng@rogers.com

PROJECT:  
**EASTSIDE SECONDARY WINDOW AND OPTIONAL DOOR REPLACEMENT & GREENHOUSE DEMO.**  
275 FARLEY AVENUE  
BELLEVILLE, ONTARIO  
HASTINGS & PRINCE EDWARD DISTRICT SCHOOL BOARD

DRAWING:  
**ELECTRICAL DEMOLITION PLANS**

**BARRY BRYAN ASSOCIATES**  
Architects  
Engineers  
Project Managers  
250 Water Street  
Suite 201  
Whitby, Ontario  
L1N 0G5  
Tel: (905) 666-5252  
Fax: (905) 666-5259  
email: info@bba-ontario.com

25 014  
DESIGN BY: TM  
DRAWN BY: STAFF  
CHECKED BY: TM  
DATE: MAR. 2025  
SCALE: 1:50  
FILE:  
PROJECT NO: **25014**  
DRAWING NO: **E-2**