

Conseil scolaire Viamonde

# UPDATED SURVEY OF ASBESTOS- CONTAINING MATERIALS

École secondaire Étienne-Brûlé

August 25, 2022

30075628

A large, solid orange geometric shape, resembling a stylized triangle or a section of a larger triangle, is positioned in the bottom right corner of the page. It is composed of two overlapping triangles, creating a complex, angular form that extends from the bottom edge towards the top right corner.

## UPDATED SURVEY OF ASBESTOS-CONTAINING MATERIALS

ÉCOLE SECONDAIRE ÉTIENNE BRÛLÉ



---

Dwayne Kellyman, Dipl. Tech.

Field Supervisor



---

Jean Daigle

Senior Technical Specialist - Project Manager,

## UPDATED SURVEY OF ASBESTOS-CONTAINING MATERIALS

École secondaire Étienne-Brûlé  
300 Banbury Road, North York, ON

Prepared for:

Conseil scolaire Viamonde

116 Cornelius Parkway

Toronto, Ontario M6L 2K5

Attention: Youri Blaquiere

Project Manager

Prepared by:

**Arcadis Canada Inc.**

**121 Granton Drive, Suite 12**

**Richmond Hill, Ontario L4B 3N4**

**Tel 905 764 9380**

Our Ref.:

30075628

Date:

August 25, 2022

*This document is intended only for the use of the individual or entity for which it was prepared and may contain information that is privileged, confidential and exempt from disclosure under applicable law. Any dissemination, distribution or copying of this document is strictly prohibited.*

## CONTENTS

1	INTRODUCTION .....	1-1
2	METHODOLOGY .....	2-1
2.1	Survey .....	2-1
2.2	Assessment.....	2-1
3	SURVEY RESULTS .....	3-1
4	DISCUSSION .....	4-1
5	USE AND LIMITATIONS OF THIS REPORT .....	5-1

## TABLES

Table 1.1	Bulk Material Samples (from O.Reg. 278/05) .....	1-2
Table 3.1	Summary of Laboratory Analyses of Bulk Samples .....	3-2
Table 3.2	Summary of Asbestos-Containing Materials .....	3-7

## APPENDICES

Appendix A	Floor Plans
Appendix B	Laboratory Reports
Appendix C	Sample List of Suspect Asbestos-Containing Building Materials from <i>A Guide to the Regulation Respecting Asbestos on Construction Projects and in Buildings and Repair Operations</i>

## 1 INTRODUCTION

Arcadis Canada Inc. (Arcadis) was retained by Conseil scolaire Viamonde (CSV) to conduct a survey of the locations of asbestos-containing materials at École Secondaire Étienne-Brûlé, Ontario following asbestos remediation associated with the renovation project in July and August 2021.

Asbestos has been widely used in buildings, both in friable applications (materials which can be easily crumbled such as pipe and tank insulation, sprayed-on fireproofing and acoustic and texture coat applications) and in non-friable materials such as floor tile, fire-rated ceiling tile, gaskets, cement board, cement pipe, drywall joint compound and so on. Plaster applications (walls, ceilings, bulkheads, etc.) may also contain asbestos. The use of asbestos in friable applications was curtailed in Ontario around the mid-1970s. Most buildings constructed prior to about the mid-1970s contain some form of friable asbestos-containing material. The use of asbestos in certain non-friable products continued beyond the 1970s. A sample list of suspect asbestos containing building materials is provided in Appendix C.

Control of exposure to asbestos is governed in Ontario by Regulation 278/05 - *Designated Substance - Asbestos on Construction Projects and in Buildings and Repair Operations*. Disposal of asbestos waste (friable and non-friable materials) is governed by Ontario Regulation 278/05 and by Ontario Regulation 347, Waste Management - General.

The major requirements of O.Reg. 278/05 with respect to asbestos surveys and assessments are as follows:

### **Survey Records:**

- non-friable asbestos-containing materials (e.g., vinyl floor tiles, ceiling tiles, drywall joint compound, plaster, etc.) are to be included in asbestos survey records effective 1 November 2007;
- asbestos survey records are to be updated:
  - (a) at least once in every 12-month period;
  - (b) whenever the owner becomes aware of new information; and
- asbestos-containing materials are to be inspected at reasonable intervals in order to determine their condition.

### **Bulk Samples:**

- the minimum number of bulk samples to be collected from an area of homogeneous material is set out in Table 1 of the regulation (Table 1 is reproduced below).
- if analysis establishes that a bulk material sample contains 0.5 per cent or more asbestos by dry weight:
  - (a) it is not necessary to analyze other bulk material samples taken from the same area of homogeneous material; and
  - (b) the entire area of homogeneous material from which the bulk materials sample was taken is deemed to be asbestos-containing material.

**Table 1.1: Bulk Material Samples (from O.Reg. 278/05)**

Item	Type of Material	Size of Area of Homogeneous Material	Minimum Number of Bulk Material Samples to be Collected
1.	Surfacing material, including without limitation material that is applied to surfaces by spraying, by trowelling or otherwise, such as acoustical plaster on ceilings and fireproofing materials on structural members	Less than 90 square metres	3
		90 or more square metres, but less than 450 square metres	5
		450 or more square metres	7
2.	Thermal insulation, except as described in Item 3	Any size	3
3.	Thermal insulation patch	Less than 2 linear metres or 0.5 square metres	1
4.	Other material	Any size	3

In practice, application of the Table 1 requirements means that the specified minimum number of negative (i.e., less than 0.5% asbestos) bulk sample analysis results will be required in order to classify a material as non asbestos.

Section 10 of O.Reg. 278/05 – *Owner's Responsibility before requesting tender or arranging work* – requires that an owner shall have an investigation carried out in order to determine if materials, that are likely to be handled, dealt with, disturbed or removed during the alteration of a building, are asbestos-containing and, if so, whether the asbestos-containing material is friable or non-friable and to identify the type of asbestos in the material. Section 10 also requires that the owner shall have a report prepared detailing the investigation findings which is to be provided to any prospective constructor.

### **Corrective Actions**

If asbestos containing fireproofing or acoustical or thermal insulation has fallen and is being disturbed so that exposure to the material is likely to occur, O.Reg. 278/05 requires that the owner shall cause the fallen material to be cleaned up and, if it is readily apparent that material will continue to fall because of the deterioration, the owner shall repair, seal, remove or permanently enclose the material.

O.Reg. 278/05 classifies the asbestos work operations into three types (Type 1, 2 and 3) and specifies procedures to be followed in conducting asbestos abatement work.

## 2 METHODOLOGY

### 2.1 Survey

Site inspections were carried out by Arcadis staff on January 28, 2010 to determine the locations of building construction materials suspected of containing asbestos. All readily accessible areas, including spaces above accessible suspended ceilings, were inspected throughout the facility. Site inspections were also performed in select areas of the building on March 19, 2015.

Additional site inspections were performed in select areas of the building in February 2017, January 31, 2019 and July 2021 as part of building renovation projects. This report has been updated to include information from additional investigations and remediation that took place in 2021.

Representative bulk samples of material were collected by Arcadis staff during the course of the site inspection and were forwarded to EMSL Analytical Inc. and EMSL Canada Inc. (EMSL) for analysis of asbestos content. Determination of the locations of asbestos-containing materials were made based on results of bulk sample analysis, and on visual observations and physical characteristics of the applications at each inspection location.

### 2.2 Assessment

During the survey, the condition of all friable materials is assessed. Assessment involves the evaluation of a number of factors, including:

- asbestos content;
- physical damage;
- water damage;
- accessibility;
- adjacent activity, vibrations;
- air distribution system (air plenum); and
- friability.

Recommendations for appropriate corrective measures are based on findings of the assessment and consist primarily of either repair or removal (and replacement) of the asbestos containing materials. No recommended corrective actions were required at the time that this report was prepared.

### 3 SURVEY RESULTS

Arcadis reviewed reports prepared by Arcadis for the CSV entitled *Updated Survey of Asbestos-Containing Materials, École Secondaire Étienne-Brûlé, North York, Ontario* dated March 30 2020, *Pre-Renovation Designated Substances and Hazardous Materials Survey, École Secondaire Étienne-Brûlé, 300 Banbury Road, North York, Ontario* dated February 24, 2021. Information and/or bulk sample analysis results obtained from these reports were utilized by Arcadis in the preparation of this report.

On the basis of the survey work carried out, we report that friable asbestos containing materials are present in École secondaire Étienne-Brûlé in the following accessible applications:

- fireproofing assumed to be present on columns above solid ceilings, behind masonry walls and behind other building components throughout the facility;
- thermal insulation applied on pipe fittings throughout the building; and
- thermal insulation (black tar) applied on pipe straights in Room 221.

Glass fibre insulation is readily visually distinguishable (typically yellow in colour) from asbestos containing insulation materials and was, therefore, not tested for asbestos content.

All thermal insulation, with the exception of glass fibre material, should be assumed to contain asbestos unless a bulk sample analysis indicates otherwise.

Visual inspections and laboratory analyses of representative bulk samples of materials confirm that non-friable asbestos-containing materials are present in the following accessible applications:

- 12" x 12" vinyl floor tiles throughout the building;
- mastics under vinyl floor tiles throughout the building;
- drywall joint compound throughout the building;
- cement countertops in Rooms 203, 206, 206B, 206C and 209;
- caulking on interior door frames located throughout the building with the exception of Rooms 102-113, 127, 128, 128A 130B 131, 132, 135, 135A, 140, 140A and 141.
- cement board (assumed asbestos) stored in Room 139; and
- cement piping below grade throughout the building.

A room-by-room summary of the locations and conditions of asbestos-containing materials identified is presented in Table 3.2. The locations of accessible asbestos containing materials are identified on the floor plans provided in Appendix A.

A summary of the results of laboratory analysis of bulk samples is presented in Table 3.1. The laboratory reports are provided in Appendix B.

UPDATED SURVEY OF ASBESTOS-CONTAINING MATERIALS

ÉCOLE SECONDAIRE ÉTIENNE BRÛLÉ

**Table 3.1: Summary of Laboratory Analyses of Bulk Samples**

**ÉCOLE SECONDAIRE ÉTIENNE BRÛLÉ**

Sample N°	Location	Description	Asbestos Content
1A	Room 135	Fireproofing on column	<b>25% Chrysotile</b>
1A	Room 135	Cement pipe (Transite)	<b>15% Chrysotile</b>
1A	Room 105	2'x4' ceiling tile –pinhole small fissure on 4' (fire rated)	None Detected <sup>(1)</sup>
1B	Room 109	2'x4' ceiling tile –pinhole small fissure on 4' (fire rated)	None Detected <sup>(1)</sup>
1C	Room 110	2'x4' ceiling tile –pinhole small fissure on 4' (fire rated)	None Detected <sup>(1)</sup>
2A	Room 140	12" vinyl floor tile – white with dark green fleck	None Detected <sup>(1)</sup>
2B	Room 140	12" vinyl floor tile – white with dark green fleck	None Detected <sup>(1)</sup>
2C	Room 140	12" vinyl floor tile – white with dark green fleck	None Detected <sup>(1)</sup>
3A	Room 140C	12" peel and stick tile	None Detected <sup>(1)</sup>
3B	Room 140C	12" peel and stick tile	None Detected <sup>(1)</sup>
3C	Room 140C	12" peel and stick tile	None Detected <sup>(1)</sup>
4A	Room 140	Black and yellow floor tile mastic	None Detected <sup>(1)</sup>
4B	Room 140C	Black and yellow floor tile mastic	None Detected <sup>(1)</sup>
4C	Room 140	Black and yellow floor tile mastic	None Detected <sup>(1)</sup>
5A	Room 140B	1"x1" red ceramic floor tile – grout	<0.25% Chrysotile (Pt Ct) <sup>(1,2)</sup>
5B	Room 128A	1"x1" red ceramic floor tile – grout	<0.25% Chrysotile (Pt Ct) <sup>(1,2)</sup>
5C	Room 140B	1"x1" red ceramic floor tile – grout	<0.25% Chrysotile (Pt Ct) <sup>(1,2)</sup>
6A	Room 127B	1"x1" red ceramic floor tile – mortar bed	<0.25% Chrysotile (Pt Ct) <sup>(1,2)</sup>
6B	Room 128A	1"x1" red ceramic floor tile – mortar bed	<0.25% Chrysotile (Pt Ct) <sup>(1,2)</sup>
6C	Room 140B	1"x1" red ceramic floor tile – mortar bed	<0.25% Chrysotile (Pt Ct) <sup>(1,2)</sup>
7A	Room 127	Black vft mastic under 12" brown with white tile	None detected



UPDATED SURVEY OF ASBESTOS-CONTAINING MATERIALS

ÉCOLE SECONDAIRE ÉTIENNE BRÛLÉ

Sample N°	Location	Description	Asbestos Content
7B	Room 135	Black vft mastic under 12" brown with white tile	None detected
7C	Room 140A	Black vft mastic under 12" brown with white tile	None detected
1A	Room 102	2'x4' ceiling tile – pinhole random fissure	None Detected <sup>(1)</sup>
1B	Corridor C205	2'x4' ceiling tile – pinhole random fissure	None Detected <sup>(1)</sup>
1C	Corridor C206	2'x4' ceiling tile – pinhole random fissure	None Detected <sup>(1)</sup>
2A	Room 102B	2'x4' ceiling tile – circular pattern	None Detected <sup>(1)</sup>
2B	Corridor C107	2'x4' ceiling tile – circular pattern	None Detected <sup>(1)</sup>
3A	Room 117	6" red ceramic floor tile – grout (grey)	None Detected <sup>(1)</sup>
3B	Room 129	6" red ceramic floor tile – grout (grey)	None Detected <sup>(1)</sup>
3C	Room 222A	6" red ceramic floor tile – grout (grey)	None Detected <sup>(1)</sup>
4A	Room 117	6" red ceramic floor tile – mortar bed (grey)	<0.25% Chrysotile (Pt Ct) <sup>(1,2)</sup>
4B	Room 129	6" red ceramic floor tile – mortar bed (grey)	<0.25% Chrysotile (Pt Ct) <sup>(1,2)</sup>
4C	Room 222A	6" red ceramic floor tile – mortar bed (grey)	<0.25% Chrysotile (Pt Ct) <sup>(1,2)</sup>
5A	Room 117	6" grey ceramic floor tile – grout (grey)	None Detected <sup>(1)</sup>
5B	Room 133	6" grey ceramic floor tile – grout (grey)	None Detected <sup>(1)</sup>
5C	Room 226A	6" grey ceramic floor tile – grout (grey)	None Detected <sup>(1)</sup>
6A	Room 117	6" grey ceramic floor tile – mortar bed (white)	None Detected <sup>(1)</sup>
6B	Room 133	6" grey ceramic floor tile – mortar bed (white)	None Detected <sup>(1)</sup>
6C	Room 226A	6" grey ceramic floor tile – mortar bed (white)	None Detected <sup>(1)</sup>
1A	Room 142A	Partition wall cover – brown in colour	None Detected <sup>(1)</sup>
1B	Room 142B	Partition wall cover – brown in colour	None Detected <sup>(1)</sup>
1C	Room 142A	Partition wall cover – brown in colour	None Detected <sup>(1)</sup>
2A	Room 105	Interior window caulking	None Detected (PLM) <sup>(1)</sup> None Detected (TEM) <sup>(1)</sup>
2B	Room 107	Interior window caulking	None Detected <sup>(1)</sup>
2C	Room 108	Interior window caulking	None Detected <sup>(1)</sup>

UPDATED SURVEY OF ASBESTOS-CONTAINING MATERIALS

ÉCOLE SECONDAIRE ÉTIENNE BRÛLÉ

Sample N°	Location	Description	Asbestos Content
3A	Exit S12	Exterior door caulking	None Detected (PLM) <sup>(1)</sup> None Detected (TEM) <sup>(1)</sup>
3B	Exit S10	Exterior door caulking	None Detected <sup>(1)</sup>
3C	Exis S02	Exterior door caulking	None Detected <sup>(1)</sup>
4A	Room 110	Exterior window caulking	None Detected (PLM) <sup>(1)</sup> None Detected (TEM) <sup>(1)</sup>
4B	Room 111	Exterior window caulking	None Detected <sup>(1)</sup>
4C	Room 112	Exterior window caulking	None Detected <sup>(1)</sup>
1-A	Room 130A	Interior door caulking – black color	<b>0.67% Chrysotile(TEM) <sup>(1)</sup></b>
2-A	Room 132	Yellow paint on concrete block coating	None Detected <sup>(1)</sup>
2-B	Room 134	Yellow paint on concrete block coating	None Detected <sup>(1)</sup>
2-C	Room 130A	Yellow paint on concrete block coating	None Detected <sup>(1)</sup>
3-A	Room 134	Concrete block mortar	None Detected <sup>(1)</sup>
3-B	Room 132	Concrete block mortar	None Detected <sup>(1)</sup>
3-C	Room 115E	Concrete block mortar	<0.25% Chrysotile <sup>(1,2)</sup>
4-A	Room 123M	Partition wall fabric	None Detected <sup>(1)</sup>
4-B	Room 123M	Partition wall fabric	None Detected <sup>(1)</sup>
4-C	Room 123M	Partition wall fabric	None Detected <sup>(1)</sup>
1-A	Room 115E	Mastic under VFT – black color	<b>0.72% Chrysotile(TEM)<sup>(1,3)</sup></b>
2-A	Room 115E	Mastic on vinyl baseboard – brown color	None Detected(TEM) <sup>(1)</sup>
2-B	Room 134	Mastic on vinyl baseboard – brown color	None Detected <sup>(1)</sup>
2-C	Room 132	Mastic on vinyl baseboard – brown color	None Detected <sup>(1)</sup>
3-A	Room 115E	Vinyl baseboard – black color	None Detected(TEM) <sup>(1)</sup>
3-B	Room 134	Vinyl baseboard – black color	None Detected <sup>(1)</sup>
3-C	Room 132	Vinyl baseboard – black color	None Detected <sup>(1)</sup>
4	Room 134C	Mastic under VFT – black color	<b>0.67% Chrysotile <sup>(1,3)</sup></b>
5A-FP	Room 209	Fireproofing – grey fibrous	None Detected <sup>(1)</sup>
5B-FP	Room 203	Fireproofing – grey fibrous	None Detected <sup>(1)</sup>

UPDATED SURVEY OF ASBESTOS-CONTAINING MATERIALS

ÉCOLE SECONDAIRE ÉTIENNE BRÛLÉ

Sample N°	Location	Description	Asbestos Content
5C-FP	Room B2	Fireproofing – grey fibrous	None Detected <sup>(1)</sup>
6A-AC	Corridor 202	Acoustical spray	None Detected <sup>(1)</sup>
6B-AC	Corridor 202	Acoustical spray	None Detected <sup>(1)</sup>
6C-AC	Corridor 206	Acoustical spray	None Detected <sup>(1)</sup>
6D-AC	Corridor 111	Acoustical spray	None Detected <sup>(1)</sup>
6E-AC	Room 123	Acoustical spray	None Detected <sup>(1)</sup>
10A-SCT	Room B2	2'x4' textured pinhole (code DEPTY on back)	None Detected <sup>(1)</sup>
10B-SCT	Room 215	2'x4' textured pinhole (code DEPTY on back)	None Detected <sup>(1)</sup>
10C-SCT	Room 102D	2'x4' textured pinhole (code DEPTY on back)	None Detected <sup>(1)</sup>
11A-VFT	Room 207	12"x12" vinyl floor tile, green w/ heavy green streaks	None Detected <sup>(1)</sup>
11B-VFT	Room 207	12"x12" vinyl floor tile, green w/ heavy green streaks	None Detected <sup>(1)</sup>
11C-VFT	Room 207	12"x12" vinyl floor tile, green w/ heavy green streaks	None Detected <sup>(1)</sup>
12A-VFT	Room 212	12"x12" white with green streaks	None Detected <sup>(1)</sup>
12B-VFT	Room 212	12"x12" white with green streaks	None Detected <sup>(1)</sup>
12C-VFT	Room 132	12"x12" white with green streaks	None Detected <sup>(1)</sup>
13A-SCT	Corridor 201	2'x4' short deep fissure	None Detected <sup>(1)</sup>
13B-SCT	Corridor 201	2'x4' short deep fissure	None Detected <sup>(1)</sup>
13C-SCT	Corridor 201	2'x4' short deep fissure	None Detected <sup>(1)</sup>
15A-KN	Room 201	Kiln (Amaco) interior insulation	None Detected <sup>(1)</sup>
15B-KN	Room 201	Kiln (Amaco) interior insulation	None Detected <sup>(1)</sup>
15C-KN	Room 201	Kiln (Amaco) interior insulation	None Detected <sup>(1)</sup>
16A-KN	Room 201	Kiln (Kiln & Furnaces Ltd.) interior insulation	None Detected <sup>(1)</sup>
16B-KN	Room 201	Kiln (Kiln & Furnaces Ltd.) interior insulation	None Detected <sup>(1)</sup>
16C-KN	Room 201	Kiln (Kiln & Furnaces Ltd.) interior insulation	None Detected <sup>(1)</sup>
17A-VFT	Elevator 2	12"x12" vinyl floor tile, beige w/ white & dark beige	<b>6.2% Chrysotile<sup>(1)</sup></b>
19A-PL	Room 221	Plaster textured	None Detected <sup>(1)</sup>
19B-PL	Room 221	Plaster textured	None Detected <sup>(1)</sup>

# UPDATED SURVEY OF ASBESTOS-CONTAINING MATERIALS

## ÉCOLE SECONDAIRE ÉTIENNE BRÛLÉ

Sample N°	Location	Description	Asbestos Content
19C-PL	Room 221	Plaster textured	None Detected <sup>(1)</sup>
20A-PF	Room 221	Pipe insulation – black tar	<b>6.3% Chrysotile</b> <sup>(1)</sup>
22A-VFT	Room 125	12"x12" tan with grey streaks	None Detected <sup>(1)</sup>
22B-VFT	Room 125	12"x12" tan with grey streaks	None Detected <sup>(1)</sup>
22C-VFT	Room 125	12"x12" tan with grey streaks	None Detected <sup>(1)</sup>
23A-VFT	Room 116	12"x12" vinyl floor tile, turquoise w/ black & white	None Detected <sup>(1)</sup>
23B-VFT	Room 116	12"x12" vinyl floor tile, turquoise w/ black & white	None Detected <sup>(1)</sup>
23C-VFT	Room 116	12"x12" vinyl floor tile, turquoise w/ black & white	None Detected <sup>(1)</sup>
1A-VFT-206B	Room 206B	12"x12" vinyl floor tile, grey-beige w/ white streaks	<b>23.6% Chrysotile</b> <sup>(1)</sup>
1A-VFTM-206B	Room 206B	Mastics under vinyl floor tiles	<b>2.9% Chrysotile</b> <sup>(1)</sup>
2A-CP-209	Room 209	Cement countertop, black	<b>28.5% Chrysotile</b> <sup>(1)</sup>
4A-JC-203	Room 203	Drywall joint compound	<b>0.75% Chrysotile</b> <sup>(1)</sup>
3A-SCT-206B	Room 206B	2'x4' suspended ceiling tile, pinholes circular pattern	None Detected <sup>(1)</sup>
S.02	-----	MJC	<b>40% Chrysotile</b> <sup>(1)</sup>
S.18	-----	Drain pipe insulation	<b>25% Chrysotile</b> <sup>(1)</sup>
S.03	-----	12"x12" vinyl floor tile, brown w/ white streaks	<b>3% Chrysotile</b> <sup>(1)</sup>

### NOTES:

(1) Sample results derived from a report prepared by Arcadis for CSV entitled *Pre-Renovation Designated Substances and Hazardous Materials Survey, École secondaire Etienne Brule, 300 Banbury Road, North York, Ontario dated February 24, 2021*;

(2) "Asbestos-containing material" is defined as material that contains 0.5% or more asbestos by dry weight.

(3) Material tested from this location was removed and are provided here for reference purposes only.

Bulk samples were analyzed by Polarized Light Microscopy (PLM) analysis, except where "TEM" is noted, in which case Transmission Electron Microscopy analysis was also performed.

< = less than.

Chrysotile = Chrysotile asbestos.

# UPDATED SURVEY OF ASBESTOS-CONTAINING MATERIALS

ÉCOLE SECONDAIRE ÉTIENNE BRÛLÉ

**Table 3.2: Summary of Asbestos-Containing Materials**

ÉCOLE SECONDAIRE ÉTIENNE BRÛLÉ

Level	Room	Material	Asbestos Content	Location Within Space	Estimated Quantity	Friable or Non-Friable	Condition	Comments
1	100							NACMO See footnote 1&2
1	101							NACMO See footnote 1&2
1	102	Drywall joint compound	0.75% chrysotile	25% of walls and on ceiling above T-bar	10-50 m <sup>2</sup>	Non-friable	G	See footnote 2
		12" vinyl floor tiles	23.6% chrysotile	All flooring	10-50 m <sup>2</sup>	Non-friable	G	
		Mastics under floor tiles	2.9% chrysotile	Below floor tiles	10-50 m <sup>2</sup>	Non-friable	G	
1	102A	Drywall joint compound	0.75% chrysotile	50% of walls and on ceiling above T-bar	10-50 m <sup>2</sup>	Non-friable	G	See footnote 2
		12" vinyl floor tiles	23.6% chrysotile	All flooring	10-50 m <sup>2</sup>	Non-friable	G	
		Mastics under floor tiles	2.9% chrysotile	Below floor tiles	10-50 m <sup>2</sup>	Non-friable	G	
1	102B	Drywall joint compound	0.75% chrysotile	50% of walls and on ceiling above T-bar	10-50 m <sup>2</sup>	Non-friable	G	See footnote 2
		12" vinyl floor tiles	23.6% chrysotile	All flooring	10-50 m <sup>2</sup>	Non-friable	G	
		Mastics under floor tiles	2.9% chrysotile	Below floor tiles	10-50 m <sup>2</sup>	Non-friable	G	
1	102C	Drywall joint compound	0.75% chrysotile	All ceiling	>100 m <sup>2</sup>	Non-friable	G	See footnote 2

# UPDATED SURVEY OF ASBESTOS-CONTAINING MATERIALS

## ÉCOLE SECONDAIRE ÉTIENNE BRÛLÉ

Level	Room	Material	Asbestos Content	Location Within Space	Estimated Quantity	Friable or Non-Friable	Condition	Comments
		12" vinyl floor tiles	23.6% chrysotile	All flooring	>100 m <sup>2</sup>	Non-friable	G	
		Mastics under floor tiles	2.9% chrysotile	Below floor tiles	>100 m <sup>2</sup>	Non-friable	G	
1	102D	Drywall joint compound	0.75% chrysotile	25% of walls and on ceiling above T-bar	10-50 m <sup>2</sup>	Non-friable	G	See footnote 2
		12" vinyl floor tiles	23.6% chrysotile	All flooring	10-50 m <sup>2</sup>	Non-friable	G	
		Mastics under floor tiles	2.9% chrysotile	Below floor tiles	10-50 m <sup>2</sup>	Non-friable	G	
1	102E	Drywall joint compound	0.75% chrysotile	All walls and on ceiling above T-bar	10-50 m <sup>2</sup>	Non-friable	G	See footnote 2
		12" vinyl floor tiles	23.6% chrysotile	All flooring	10-50 m <sup>2</sup>	Non-friable	G	
		Mastics under floor tiles	2.9% chrysotile	Below floor tiles	10-50 m <sup>2</sup>	Non-friable	G	
1	102F	Drywall joint compound	0.75% chrysotile	50% of walls and on ceiling above T-bar	10-50 m <sup>2</sup>	Non-friable	G	See footnote 2
		12" vinyl floor tiles	23.6% chrysotile	All flooring	10-50 m <sup>2</sup>	Non-friable	G	
		Mastics under floor tiles	2.9% chrysotile	Below floor tiles	10-50 m <sup>2</sup>	Non-friable	G	
1	103	Drywall joint compound	0.75% chrysotile	75% of walls and on ceiling above T-bar	>100 m <sup>2</sup>	Non-friable	G	See footnote 2
1	103A	Drywall joint compound	0.75% chrysotile	All walls and on ceiling above T-bar	10-50 m <sup>2</sup>	Non-friable	G	See footnote 2
		12" vinyl floor tiles	23.6% chrysotile	All flooring	10-50 m <sup>2</sup>	Non-friable	G	
		Mastics under floor tiles	2.9% chrysotile	Below floor tiles	10-50 m <sup>2</sup>	Non-friable	G	

# UPDATED SURVEY OF ASBESTOS-CONTAINING MATERIALS

## ÉCOLE SECONDAIRE ÉTIENNE BRÛLÉ

Level	Room	Material	Asbestos Content	Location Within Space	Estimated Quantity	Friable or Non-Friable	Condition	Comments
1	103B	Drywall joint compound	0.75% chrysotile	All walls and ceiling above T-bar	10-50 m <sup>2</sup>	Non-friable	G	Vinyl floor sheeting reportedly installed post-1990. See footnote 2
1	104	Drywall joint compound	0.75% chrysotile	All walls and ceiling above T-bar	10-50 m <sup>2</sup>	Non-friable	G	Vinyl floor sheeting reportedly installed post-1990. See footnote 2
1	104A	Drywall joint compound	0.75% chrysotile	All walls and ceiling above T-bar	10-50 m <sup>2</sup>	Non-friable	G	Vinyl floor sheeting reportedly installed post-1990. See footnote 2
1	104B	Drywall joint compound	0.75% chrysotile	All walls and ceiling above T-bar	10-50 m <sup>2</sup>	Non-friable	G	Vinyl floor sheeting reportedly installed post-1990. See footnote 2
1	104C	Drywall joint compound	0.75% chrysotile	All walls and ceiling above T-bar	10-50 m <sup>2</sup>	Non-friable	G	Vinyl floor sheeting reportedly installed post-1990. See footnote 2

# UPDATED SURVEY OF ASBESTOS-CONTAINING MATERIALS

## ÉCOLE SECONDAIRE ÉTIENNE BRÛLÉ

Level	Room	Material	Asbestos Content	Location Within Space	Estimated Quantity	Friable or Non-Friable	Condition	Comments
1	104D	Drywall joint compound	0.75% chrysotile	All walls and ceiling above T-bar	10-50 m <sup>2</sup>	Non-friable	G	Vinyl floor sheeting reportedly installed post-1990. See footnote 2
1	104E	Drywall joint compound	0.75% chrysotile	All walls and ceiling above T-bar	10-50 m <sup>2</sup>	Non-friable	G	Vinyl floor sheeting reportedly installed post-1990. See footnote 2
1	104F	Drywall joint compound	0.75% chrysotile	All walls and ceiling above T-bar	10-50 m <sup>2</sup>	Non-friable	G	Vinyl floor sheeting reportedly installed post-1990. See footnote 2
1	105	Drywall joint compound	0.75% chrysotile	75% of walls	50-100 m <sup>2</sup>	Non-friable	G	See footnote 2
		12" vinyl floor tiles	23.6% chrysotile	All flooring	50-100 m <sup>2</sup>	Non-friable	G	
		Mastics under floor tiles	2.9% chrysotile	Below floor tiles	50-100 m <sup>2</sup>	Non-friable	G	
1	106	Drywall joint compound	0.75% chrysotile	All walls and ceiling above T-bar	10-50 m <sup>2</sup>	Non-friable	G	See footnote 2
		12" vinyl floor tiles	23.6% chrysotile	All flooring	10-50 m <sup>2</sup>	Non-friable	G	
		Mastics under floor tiles	2.9% chrysotile	Below floor tiles	10-50 m <sup>2</sup>	Non-friable	G	
1	107	Drywall joint compound	0.75% chrysotile	75% of walls	50-100 m <sup>2</sup>	Non-friable	G	See footnote 2
		12" vinyl floor tiles	23.6% chrysotile	All flooring	50-100 m <sup>2</sup>	Non-friable	G	



# UPDATED SURVEY OF ASBESTOS-CONTAINING MATERIALS

## ÉCOLE SECONDAIRE ÉTIENNE BRÛLÉ

Level	Room	Material	Asbestos Content	Location Within Space	Estimated Quantity	Friable or Non-Friable	Condition	Comments
		Cement piping	25% chrysotile	Above ceiling	3-15 m	Non-friable	G	
1	108	Drywall joint compound	0.75% chrysotile	75% of walls	50-100 m <sup>2</sup>	Non-friable	G	See footnote 2
1	109	Drywall joint compound	0.75% chrysotile	All walls	50-100 m <sup>2</sup>	Non-friable	G	See footnote 2
		12" vinyl floor tiles	23.6% chrysotile	All flooring	50-100 m <sup>2</sup>	Non-friable	G	
		Mastics under floor tiles	2.9% chrysotile	Below floor tiles	50-100 m <sup>2</sup>	Non-friable	G	
1	110	Drywall joint compound	0.75% chrysotile	75% of walls	10-50 m <sup>2</sup>	Non-friable	G	See footnote 2
1	111	Drywall joint compound	0.75% chrysotile	75% of walls	50-100 m <sup>2</sup>	Non-friable	G	See footnote 2
		12" vinyl floor tiles	23.6% chrysotile	All flooring	50-100 m <sup>2</sup>	Non-friable	G	
		Mastics under floor tiles	2.9% chrysotile	Below floor tiles	50-100 m <sup>2</sup>	Non-friable	G	
1	112	Drywall joint compound	0.75% chrysotile	75% of walls	50-100 m <sup>2</sup>	Non-friable	G	See footnote 2
		12" vinyl floor tiles	23.6% chrysotile	All flooring	50-100 m <sup>2</sup>	Non-friable	G	
		Mastics under floor tiles	2.9% chrysotile	Below floor tiles	50-100 m <sup>2</sup>	Non-friable	G	
1	113	Drywall joint compound	0.75% chrysotile	60% of walls and on ceiling above T-bar	50-100 m <sup>2</sup>	Non-friable	G	See footnote 2
		12" vinyl floor tiles	3% chrysotile	All flooring	50-100 m <sup>2</sup>	Non-friable	G	
1	114							NACMO See footnote 1&2
1	115	Drywall joint compound	0.75% chrysotile	Walls above door and on ceiling above T-bar	10-50 m <sup>2</sup>	Non-friable	G	See footnote 1&2
		12" vinyl floor tiles	23.6% chrysotile	All flooring	10-50 m <sup>2</sup>	Non-friable	G	

# UPDATED SURVEY OF ASBESTOS-CONTAINING MATERIALS

## ÉCOLE SECONDAIRE ÉTIENNE BRÛLÉ

Level	Room	Material	Asbestos Content	Location Within Space	Estimated Quantity	Friable or Non-Friable	Condition	Comments
		Mastics under floor tiles	2.9% chrysotile	Below floor tiles	10-50 m <sup>2</sup>	Non-friable	G	
1	115A	Drywall joint compound	0.75% chrysotile	Walls above door and on ceiling above T-bar	<10 m <sup>2</sup>	Non-friable	G	See footnote 1&2
		12" vinyl floor tiles	3% chrysotile	All flooring	<10 m <sup>2</sup>	Non-friable	G	
1	115B	Drywall joint compound	0.75% chrysotile	Walls above door and on ceiling above T-bar	<10 m <sup>2</sup>	Non-friable	G	See footnote 1&2
		12" vinyl floor tiles	3% chrysotile	All flooring	<10 m <sup>2</sup>	Non-friable	G	
1	115C	Drywall joint compound	0.75% chrysotile	All walls	<10 m <sup>2</sup>	Non-friable	G	See footnote 1&2
		12" vinyl floor tiles	23.6% chrysotile	All flooring	<10 m <sup>2</sup>	Non-friable	G	
		Mastics under floor tiles	2.9% chrysotile	Below floor tiles	<10 m <sup>2</sup>	Non-friable	G	
1	115D	Drywall joint compound	0.75% chrysotile	All ceiling	10-50 m <sup>2</sup>	Non-friable	G	See footnote 1&2
		12" vinyl floor tiles	23.6% chrysotile	All flooring	10-50 m <sup>2</sup>	Non-friable	G	
		Mastics under floor tiles	2.9% chrysotile	Below floor tiles	10-50 m <sup>2</sup>	Non-friable	G	
		Cement piping	25% chrysotile	Behind wall	3-15 m	Non-friable	G	
		Pipe fitting insulation	40% chrysotile	Below ceiling	5-10 fittings	Friable	G	
1	115E	Drywall joint compound	0.75% chrysotile	Upper walls	10-50 m <sup>2</sup>	Non-friable	G	See footnote 1&2
1	116	Drywall joint compound	0.75% chrysotile	40% of walls	10-50 m <sup>2</sup>	Non-friable	G	See footnote 1&2
1	116A	Drywall joint compound	0.75% chrysotile	50% of walls	10-50 m <sup>2</sup>	Non-friable	G	See footnote 1&2

# UPDATED SURVEY OF ASBESTOS-CONTAINING MATERIALS

## ÉCOLE SECONDAIRE ÉTIENNE BRÛLÉ

Level	Room	Material	Asbestos Content	Location Within Space	Estimated Quantity	Friable or Non-Friable	Condition	Comments
1	116B	Drywall joint compound	0.75% chrysotile	50% of walls	10-50 m <sup>2</sup>	Non-friable	G	See footnote 1&2
1	118	Drywall joint compound	0.75% chrysotile	50% of walls and on ceiling above T-bar	50-100 m <sup>2</sup>	Non-friable	G	See footnote 1&2
		12" vinyl floor tiles	3% chrysotile	All flooring	50-100 m <sup>2</sup>	Non-friable	G	
1	119	Drywall joint compound	0.75% chrysotile	Ceiling above T-bar	>100 m <sup>2</sup>	Non-friable	G	See footnote 1&2
		12" vinyl floor tiles	23.6% chrysotile	All flooring	>100 m <sup>2</sup>	Non-friable	G	
		Mastics under floor tiles	2.9% chrysotile	Below floor tiles	>100 m <sup>2</sup>	Non-friable	G	
1	119A	12" vinyl floor tiles	23.6% chrysotile	All flooring	<10 m <sup>2</sup>	Non-friable	G	See footnote 1&2
		Mastics under floor tiles	2.9% chrysotile	Below floor tiles	<10 m <sup>2</sup>	Non-friable	G	
1	120	Drywall joint compound	0.75% chrysotile	Ceiling above T-bar	10-50 m <sup>2</sup>	Non-friable	G	See footnote 1&2
		12" vinyl floor tiles	23.6% chrysotile	All flooring	10-50 m <sup>2</sup>	Non-friable	G	
		Mastics under floor tiles	2.9% chrysotile	Below floor tiles	10-50 m <sup>2</sup>	Non-friable	G	
1	121	Drywall joint compound	0.75% chrysotile	Ceiling above T-bar	<10 m <sup>2</sup>	Non-friable	G	See footnote 1&2
		12" vinyl floor tiles	23.6% chrysotile	All flooring	<10 m <sup>2</sup>	Non-friable	G	
		Mastics under floor tiles	2.9% chrysotile	Below floor tiles	<10 m <sup>2</sup>	Non-friable	G	
1	121A	Drywall joint compound	0.75% chrysotile	Ceiling above T-bar	10-50 m <sup>2</sup>	Non-friable	G	See footnote 1&2
		12" vinyl floor tiles	23.6% chrysotile	All flooring	10-50 m <sup>2</sup>	Non-friable	G	
		Mastics under floor tiles	2.9% chrysotile	Below floor tiles	10-50 m <sup>2</sup>	Non-friable	G	
1	121C	Drywall joint compound	0.75% chrysotile	All ceiling	10-50 m <sup>2</sup>	Non-friable	G	See footnote 1&2

# UPDATED SURVEY OF ASBESTOS-CONTAINING MATERIALS

## ÉCOLE SECONDAIRE ÉTIENNE BRÛLÉ

Level	Room	Material	Asbestos Content	Location Within Space	Estimated Quantity	Friable or Non-Friable	Condition	Comments
1	121E	Drywall joint compound	0.75% chrysotile	All ceiling	10-50 m <sup>2</sup>	Non-friable	G	See footnote 1&2
		Cement piping	25% chrysotile	Above ceiling	3-15 m	Non-friable	G	
1	122	Drywall joint compound	0.75% chrysotile	75% of walls and on ceiling above T-bar	10-50 m <sup>2</sup>	Non-friable	G	See footnote 1&2
		12" vinyl floor tiles	23.6% chrysotile	All flooring	10-50 m <sup>2</sup>	Non-friable	G	
		Mastics under floor tiles	2.9% chrysotile	Below floor tiles	10-50 m <sup>2</sup>	Non-friable	G	
1	123	12" vinyl floor tiles	23.6% chrysotile	All flooring	>100 m <sup>2</sup>	Non-friable	G	See footnote 1&2
		Mastics under floor tiles	2.9% chrysotile	Below floor tiles	>100 m <sup>2</sup>	Non-friable	G	
		Cement piping	25% chrysotile	Below ceiling	>30 m	Non-friable	G	
		Pipe fitting insulation	40% chrysotile	Below ceiling	5-10 fittings	Friable	G	
1	123A	Drywall joint compound	0.75% chrysotile	On upper layer of ceiling	10-50 m <sup>2</sup>	Non-friable	G	See footnote 1&2
1	123B	Drywall joint compound	0.75% chrysotile	On upper layer of ceiling	10-50 m <sup>2</sup>	Non-friable	G	See footnote 1&2
1	123C	Drywall joint compound	0.75% chrysotile	Wall above door and on ceiling above T-bar	<10 m <sup>2</sup>	Non-friable	G	See footnote 1&2
1	123D	Drywall joint compound	0.75% chrysotile	All ceiling	10-50 m <sup>2</sup>	Non-friable	G	See footnote 1&2
1	123E	Drywall joint compound	0.75% chrysotile	All ceiling	10-50 m <sup>2</sup>	Non-friable	G	See footnote 1&2
1	123F	Drywall joint compound	0.75% chrysotile	All ceiling	50-100 m <sup>2</sup>	Non-friable	G	See footnote 1&2

# UPDATED SURVEY OF ASBESTOS-CONTAINING MATERIALS

## ÉCOLE SECONDAIRE ÉTIENNE BRÛLÉ

Level	Room	Material	Asbestos Content	Location Within Space	Estimated Quantity	Friable or Non-Friable	Condition	Comments
1	123G	Drywall joint compound	0.75% chrysotile	All ceiling	10-50 m <sup>2</sup>	Non-friable	G	See footnote 1&2
1	123H	Drywall joint compound	0.75% chrysotile	On upper layer of ceiling	10-50 m <sup>2</sup>	Non-friable	G	See footnote 1&2
1	123J	Drywall joint compound	0.75% chrysotile	All ceiling	<10 m <sup>2</sup>	Non-friable	G	See footnote 1&2
1	123K	Drywall joint compound	0.75% chrysotile	On upper layer of ceiling	10-50 m <sup>2</sup>	Non-friable	G	See footnote 1&2
1	123L	Drywall joint compound	0.75% chrysotile	All ceiling	10-50 m <sup>2</sup>	Non-friable	G	See footnote 1&2
		12" vinyl floor tiles	23.6% chrysotile	All flooring	10-50 m <sup>2</sup>	Non-friable	G	
		Mastics under floor tiles	2.9% chrysotile	Below floor tiles	10-50 m <sup>2</sup>	Non-friable	G	
1	123M	Drywall joint compound	0.75% chrysotile	50% of walls	50-100 m <sup>2</sup>	Non-friable	G	See footnote 1&2
		Cement piping	25% chrysotile	Below ceiling	3-15 m	Non-friable	G	
		Pipe fitting insulation	40% chrysotile	Below ceiling	<5 fittings	Friable	G	
		Interior door caulking	0.67% chrysotile	Door frame	5-10 m	Non-friable	G	
1	123N	12" vinyl floor tiles	23.6% chrysotile	All flooring	10-50 m <sup>2</sup>	Non-friable	G	See footnote 1&2
		Mastics under floor tiles	2.9% chrysotile	Below floor tiles	10-50 m <sup>2</sup>	Non-friable	G	
1	123P	Drywall joint compound	0.75% chrysotile	Ceiling above T-bar	10-50 m <sup>2</sup>	Non-friable	G	See footnote 1&2
		Cement piping	25% chrysotile	Above ceiling	3-15 m	Non-friable	G	
1	124	Drywall joint compound	0.75% chrysotile	Wall divider and on ceiling above T-bar	>100 m <sup>2</sup>	Non-friable	G	See footnote 1&2
		12" vinyl floor tiles	23.6% chrysotile	All flooring	>100 m <sup>2</sup>	Non-friable	G	

# UPDATED SURVEY OF ASBESTOS-CONTAINING MATERIALS

## ÉCOLE SECONDAIRE ÉTIENNE BRÛLÉ

Level	Room	Material	Asbestos Content	Location Within Space	Estimated Quantity	Friable or Non-Friable	Condition	Comments
		Mastics under floor tiles	2.9% chrysotile	Below floor tiles	>100 m <sup>2</sup>	Non-friable	G	
1	125							NACMO See footnote 1&2
1	126	Drywall joint compound	0.75% chrysotile	Wall above door and on ceiling above T-bar	<10 m <sup>2</sup>	Non-friable	G	See footnote 1&2
		12" vinyl floor tiles	23.6% chrysotile	All flooring	<10 m <sup>2</sup>	Non-friable	G	
		Mastics under floor tiles	2.9% chrysotile	Below floor tiles	<10 m <sup>2</sup>	Non-friable	G	
1	126A	Drywall joint compound	0.75% chrysotile	50% of walls and on ceiling above T-bar	<10 m <sup>2</sup>	Non-friable	G	See footnote 1&2
		12" vinyl floor tiles	23.6% chrysotile	All flooring	<10 m <sup>2</sup>	Non-friable	G	
		Mastics under floor tiles	2.9% chrysotile	Below floor tiles	<10 m <sup>2</sup>	Non-friable	G	
1	126B	Drywall joint compound	0.75% chrysotile	50% of walls and all ceiling	<10 m <sup>2</sup>	Non-friable	G	See footnote 1&2
		12" vinyl floor tiles	23.6% chrysotile	All flooring	<10 m <sup>2</sup>	Non-friable	G	
		Mastics under floor tiles	2.9% chrysotile	Below floor tiles	<10 m <sup>2</sup>	Non-friable	G	
1	126C	Drywall joint compound	0.75% chrysotile	50% of walls and on ceiling above T-bar	<10 m <sup>2</sup>	Non-friable	G	See footnote 1&2
		12" vinyl floor tiles	23.6% chrysotile	All flooring	<10 m <sup>2</sup>	Non-friable	G	
		Mastics under floor tiles	2.9% chrysotile	Below floor tiles	<10 m <sup>2</sup>	Non-friable	G	
1	126D	Drywall joint compound	0.75% chrysotile	50% of walls and on ceiling above T-bar	<10 m <sup>2</sup>	Non-friable	G	See footnote 1&2

# UPDATED SURVEY OF ASBESTOS-CONTAINING MATERIALS

## ÉCOLE SECONDAIRE ÉTIENNE BRÛLÉ

Level	Room	Material	Asbestos Content	Location Within Space	Estimated Quantity	Friable or Non-Friable	Condition	Comments
		12" vinyl floor tiles	23.6% chrysotile	All flooring	<10 m <sup>2</sup>	Non-friable	G	
		Mastics under floor tiles	2.9% chrysotile	Below floor tiles	<10 m <sup>2</sup>	Non-friable	G	
1	127	Cement piping	15% chrysotile	Below grade	5-10 m	Non-friable	G	See footnote 2
1	127A						G	NACMO See footnote 2
1	127B	Cement piping	15% chrysotile	Below grade	5-10 m	Non-friable	G	See footnote 2
1	128							NACMO See footnote 2
1	129							NACMO See footnote 2
1	130	Drywall joint compound	0.75% chrysotile	10% of walls	10-50 m <sup>2</sup>	Non-friable	G	See footnote 2
		12" vinyl floor tiles	23.6% chrysotile	All flooring	50-100 m <sup>2</sup>	Non-friable	G	
		Mastics under floor tiles	2.9% chrysotile	Below floor tiles	50-100 m <sup>2</sup>	Non-friable	G	
		Interior door caulking	0.67% chrysotile	Door frame	5-10 m	Non-friable	G	
1	130A	Drywall joint compound	0.75% chrysotile	Walls	10-50 m <sup>2</sup>	Non-friable	G	See footnote 2
		12" vinyl floor tiles	23.6% chrysotile	All flooring	10-50 m <sup>2</sup>	Non-friable	G	
		Mastics under floor tiles	2.9% chrysotile	Below floor tiles	10-50 m <sup>2</sup>	Non-friable	G	
		Interior door caulking	0.67% chrysotile	Door frame	5-10 m	Non-friable	G	
1	130B	Drywall joint compound	0.75% chrysotile	Walls	10-50 m <sup>2</sup>	Non-friable	G	See footnote 2
		12" vinyl floor tiles	23.6% chrysotile	All flooring	10-50 m <sup>2</sup>	Non-friable	G	

# UPDATED SURVEY OF ASBESTOS-CONTAINING MATERIALS

## ÉCOLE SECONDAIRE ÉTIENNE BRÛLÉ

Level	Room	Material	Asbestos Content	Location Within Space	Estimated Quantity	Friable or Non-Friable	Condition	Comments
		Mastics under floor tiles	2.9% chrysotile	Below floor tiles	10-50 m <sup>2</sup>	Non-friable	G	
1	131	Drywall joint compound	0.75% chrysotile	Walls	10-50 m <sup>2</sup>	Non-friable	G	See footnote 2
		12" vinyl floor tiles	23.6% chrysotile	All flooring	10-50 m <sup>2</sup>	Non-friable	G	
		Mastics under floor tiles	2.9% chrysotile	Below floor tiles	10-50 m <sup>2</sup>	Non-friable	G	
1	132	Drywall joint compound	0.75% chrysotile	Walls	10-50 m <sup>2</sup>	Non-friable	G	See footnote 1&2
		Interior door caulking	0.67% chrysotile	Door frame	5-10 m	Non-friable	G	
1	133	Cement piping	25% chrysotile	Below ceiling	3-15 m	Non-friable	G	See footnote 2
1	135	Cement piping	15% chrysotile	Below grade	5-10 m	Non-friable	G	See footnote 1&2
1	136	Drywall joint compound	0.75% chrysotile	All ceiling	10-50 m <sup>2</sup>	Non-friable	G	See footnote 1&2
		Pipe fitting insulation	40% chrysotile	At radiator	<5 fittings	Friable	G	
1	136A	Drywall joint compound	0.75% chrysotile	All ceiling	10-50 m <sup>2</sup>	Non-friable	G	See footnote 1&2
1	137 /137A							Area not accessible at the time of survey.
1	138	Drywall joint compound	0.75% chrysotile	All ceiling	10-50 m <sup>2</sup>	Non-friable	G	See footnote 1&2
		Pipe fitting insulation	40% chrysotile	Below ceiling	5-10 fittings	Friable	G	



# UPDATED SURVEY OF ASBESTOS-CONTAINING MATERIALS

## ÉCOLE SECONDAIRE ÉTIENNE BRÛLÉ

Level	Room	Material	Asbestos Content	Location Within Space	Estimated Quantity	Friable or Non-Friable	Condition	Comments
1	139	Drywall joint compound	0.75% chrysotile	All ceiling	10-50 m <sup>2</sup>	Non-friable	G	See footnote 1&2
		Pipe fitting insulation	40% chrysotile	Below ceiling	<5 fittings	Friable	G	
		Cement board	Assumed asbestos	Stored in room	<10 m <sup>2</sup>	Non-friable	G	
1	140	Cement piping	15% chrysotile	Below grade	5-10 m	Non-friable	G	See footnote 2
1	140A							NACMO See footnote 2
1	140B							NACMO See footnote 2
1	141							NACMO See footnote 2
1	142A/B	Drywall joint compound	0.75% chrysotile	At bulkhead	10-50 m <sup>2</sup>	Non-friable	G	See footnote 1&2
		Cement piping	25% chrysotile	Below ceiling	15-30 m	Non-friable	G	
		Pipe fitting insulation	40% chrysotile	Below ceiling	3-15 fittings	Friable	G	
1	142C	12" vinyl floor tiles	23.6% chrysotile	All flooring	10-50 m <sup>2</sup>	Non-friable	G	See footnote 1&2
		Mastics under floor tiles	2.9% chrysotile	Below floor tiles	10-50 m <sup>2</sup>	Non-friable	G	
1	142D							NACMO See footnote 2
1	143							Area not accessible at the time of survey. See footnote 1&2

# UPDATED SURVEY OF ASBESTOS-CONTAINING MATERIALS

## ÉCOLE SECONDAIRE ÉTIENNE BRÛLÉ

Level	Room	Material	Asbestos Content	Location Within Space	Estimated Quantity	Friable or Non-Friable	Condition	Comments
1	144	Drywall joint compound	0.75% chrysotile	50% of walls and on ceiling above T-bar	<10 m <sup>2</sup>	Non-friable	G	See footnote 1&2
		12" vinyl floor tiles	23.6% chrysotile	All flooring	<10 m <sup>2</sup>	Non-friable	G	
		Mastics under floor tiles	2.9% chrysotile	Below floor tiles	<10 m <sup>2</sup>	Non-friable	G	
1	144A	Drywall joint compound	0.75% chrysotile	50% of walls and on ceiling above T-bar	<10 m <sup>2</sup>	Non-friable	G	See footnote 1&2
		12" vinyl floor tiles	23.6% chrysotile	All flooring	<10 m <sup>2</sup>	Non-friable	G	
		Mastics under floor tiles	2.9% chrysotile	Below floor tiles	<10 m <sup>2</sup>	Non-friable	G	
1	Corridor 101	Drywall joint compound	0.75% chrysotile	10% of walls	<10 m <sup>2</sup>	Non-friable	G	See footnote 1&2
1	Corridor 102	Drywall joint compound	0.75% chrysotile	All walls and on ceiling above T-bar	10-50 m <sup>2</sup>	Non-friable	G	See footnote 1&2
		12" vinyl floor tiles	23.6% chrysotile	All flooring	10-50 m <sup>2</sup>	Non-friable	G	
		Mastics under floor tiles	2.9% chrysotile	Below floor tiles	10-50 m <sup>2</sup>	Non-friable	G	
1	Corridor 103	Drywall joint compound	0.75% chrysotile	All walls and on ceiling above T-bar	50-100 m <sup>2</sup>	Non-friable	G	See footnote 1&2
		12" vinyl floor tiles	23.6% chrysotile	All flooring	10-50 m <sup>2</sup>	Non-friable	G	
		Mastics under floor tiles	2.9% chrysotile	Below floor tiles	10-50 m <sup>2</sup>	Non-friable	G	
1	Corridor 104	Drywall joint compound	0.75% chrysotile	All walls and on ceiling above T-bar	50-100 m <sup>2</sup>	Non-friable	G	See footnote 1&2
		12" vinyl floor tiles	23.6% chrysotile	All flooring	10-50 m <sup>2</sup>	Non-friable	G	
		Mastics under floor tiles	2.9% chrysotile	Below floor tiles	10-50 m <sup>2</sup>	Non-friable	G	

# UPDATED SURVEY OF ASBESTOS-CONTAINING MATERIALS

## ÉCOLE SECONDAIRE ÉTIENNE BRÛLÉ

Level	Room	Material	Asbestos Content	Location Within Space	Estimated Quantity	Friable or Non-Friable	Condition	Comments
1	Corridor 105	Drywall joint compound	0.75% chrysotile	40% of walls	50-100 m <sup>2</sup>	Non-friable	G	See footnote 1&2
1	Corridor 106	Drywall joint compound	0.75% chrysotile	Wall above lockers and on ceiling above T-bar	50-100 m <sup>2</sup>	Non-friable	G	See footnote 1&2
1	Corridor 107	Drywall joint compound	0.75% chrysotile	Wall above lockers	10-50 m <sup>2</sup>	Non-friable	G	See footnote 1&2
1	Corridor 108	Drywall joint compound	0.75% chrysotile	Wall above lockers	10-50 m <sup>2</sup>	Non-friable	G	See footnote 1&2
1	Corridor 109							NACMO See footnote 1&2
1	Corridor 110	Drywall joint compound	0.75% chrysotile	50% of walls and on ceiling above T-bar	50-100 m <sup>2</sup>	Non-friable	G	See footnote 1&2
		12" vinyl floor tiles	23.6% chrysotile	All flooring	50-100 m <sup>2</sup>	Non-friable	G	
		Mastics under floor tiles	2.9% chrysotile	Below floor tiles	50-100 m <sup>2</sup>	Non-friable	G	
		12" vinyl floor tiles	6.2% chrysotile	On steps	<10 m <sup>2</sup>	Non-friable	G	
1	Corridor 111	Drywall joint compound	0.75% chrysotile	Wall above lockers and on ceiling above T-bar	50-100 m <sup>2</sup>	Non-friable	G	See footnote 1&2
1	Corridor 112	12" vinyl floor tiles	3% chrysotile	All flooring	<10 m <sup>2</sup>	Non-friable	G	See footnote 1&2
1	Corridor 113							NACMO See footnote 1&2

# UPDATED SURVEY OF ASBESTOS-CONTAINING MATERIALS

## ÉCOLE SECONDAIRE ÉTIENNE BRÛLÉ

Level	Room	Material	Asbestos Content	Location Within Space	Estimated Quantity	Friable or Non-Friable	Condition	Comments
1	Stairwell A1							NACMO See footnote 1&2
1	Stairwell B1							NACMO See footnote 1&2
1	Stairwell C1	Drywall joint compound	0.75% chrysotile	Wall above door	<10 m <sup>2</sup>	Non-friable	G	See footnote 1&2
1	Exterior S01							NACMO
1	Elevator	12" vinyl floor tiles	6.2% chrysotile	All flooring	<10 m <sup>2</sup>	Non-friable	G	
2	201	Drywall joint compound	0.75% chrysotile	30% of walls	10-50 m <sup>2</sup>	Non-friable	G	See footnote 1&2
		12" vinyl floor tiles	23.6% chrysotile	All flooring	50-100 m <sup>2</sup>	Non-friable	G	
		Mastics under floor tiles	2.9% chrysotile	Below floor tiles	50-100 m <sup>2</sup>	Non-friable	G	
2	201A	Drywall joint compound	0.75% chrysotile	All walls	10-50 m <sup>2</sup>	Non-friable	G	See footnote 1&2
		12" vinyl floor tiles	23.6% chrysotile	All flooring	10-50 m <sup>2</sup>	Non-friable	G	
		Mastics under floor tiles	2.9% chrysotile	Below floor tiles	10-50 m <sup>2</sup>	Non-friable	G	
2	201B	Drywall joint compound	0.75% chrysotile	75% of walls	10-50 m <sup>2</sup>	Non-friable	G	See footnote 1&2
		12" vinyl floor tiles	23.6% chrysotile	All flooring	<10 m <sup>2</sup>	Non-friable	G	
		Mastics under floor tiles	2.9% chrysotile	Below floor tiles	<10 m <sup>2</sup>	Non-friable	G	
2	202	Drywall joint compound	0.75% chrysotile	75% of walls and on ceiling above T-bar	50-100 m <sup>2</sup>	Non-friable	G	See footnote 1&2

# UPDATED SURVEY OF ASBESTOS-CONTAINING MATERIALS

## ÉCOLE SECONDAIRE ÉTIENNE BRÛLÉ

Level	Room	Material	Asbestos Content	Location Within Space	Estimated Quantity	Friable or Non-Friable	Condition	Comments
		12" vinyl floor tiles	23.6% chrysotile	All flooring	50-100 m <sup>2</sup>	Non-friable	G	
		Mastics under floor tiles	2.9% chrysotile	Below floor tiles	50-100 m <sup>2</sup>	Non-friable	G	
2	203	Drywall joint compound	0.75% chrysotile	75% of walls and on ceiling above T-bar	50-100 m <sup>2</sup>	Non-friable	G	See footnote 1&2
		12" vinyl floor tiles	23.6% chrysotile	All flooring	50-100 m <sup>2</sup>	Non-friable	G	
		Mastics under floor tiles	2.9% chrysotile	Below floor tiles	50-100 m <sup>2</sup>	Non-friable	G	
		Cement product	28.5% chrysotile	At countertop	10-50 m <sup>2</sup>	Non-friable	G	
2	204	Drywall joint compound	6.2% chrysotile	All walls and on ceiling above T-bar	>100 m <sup>2</sup>	Non-friable	G	See footnote 1&2
2	204A	Drywall joint compound	0.75% chrysotile	All walls and on ceiling above T-bar	10-50 m <sup>2</sup>	Non-friable	G	See footnote 1&2
		12" vinyl floor tiles	23.6% chrysotile	All flooring	10-50 m <sup>2</sup>	Non-friable	G	
		Mastics under floor tiles	2.9% chrysotile	Below floor tiles	10-50 m <sup>2</sup>	Non-friable	G	
2	205	Drywall joint compound	0.75% chrysotile	All walls and on ceiling above T-bar	10-50 m <sup>2</sup>	Non-friable	G	See footnote 1&2
		12" vinyl floor tiles	23.6% chrysotile	All flooring	10-50 m <sup>2</sup>	Non-friable	G	
		Mastics under floor tiles	2.9% chrysotile	Below floor tiles	10-50 m <sup>2</sup>	Non-friable	G	
2	206	Drywall joint compound	0.75% chrysotile	All walls and on ceiling above T-bar	50-100 m <sup>2</sup>	Non-friable	G	See footnote 1&2
		12" vinyl floor tiles	23.6% chrysotile	All flooring	50-100 m <sup>2</sup>	Non-friable	G	
		Mastics under floor tiles	2.9% chrysotile	Below floor tiles	50-100 m <sup>2</sup>	Non-friable	G	
		Cement product	28.5% chrysotile	At countertop	10-50 m <sup>2</sup>	Non-friable	G	

# UPDATED SURVEY OF ASBESTOS-CONTAINING MATERIALS

## ÉCOLE SECONDAIRE ÉTIENNE BRÛLÉ

Level	Room	Material	Asbestos Content	Location Within Space	Estimated Quantity	Friable or Non-Friable	Condition	Comments
2	206A	Drywall joint compound	0.75% chrysotile	All walls and on ceiling above T-bar	10-50 m <sup>2</sup>	Non-friable	G	See footnote 1&2
		12" vinyl floor tiles	23.6% chrysotile	All flooring	10-50 m <sup>2</sup>	Non-friable	G	
		Mastics under floor tiles	2.9% chrysotile	Below floor tiles	10-50 m <sup>2</sup>	Non-friable	G	
2	206B	Drywall joint compound	0.75% chrysotile	50% of walls and on ceiling above T-bar	10-50 m <sup>2</sup>	Non-friable	G	See footnote 1&2
		12" vinyl floor tiles	23.6% chrysotile	All flooring	10-50 m <sup>2</sup>	Non-friable	G	
		Mastics under floor tiles	2.9% chrysotile	Below floor tiles	10-50 m <sup>2</sup>	Non-friable	G	
		Cement product	28.5% chrysotile	At countertop	10-50 m <sup>2</sup>	Non-friable	G	
		Cement piping	25% chrysotile	In pipe chase	3-15 m	Non-friable	G	
2	206C	Drywall joint compound	0.75% chrysotile	All walls and on ceiling above T-bar	10-50 m <sup>2</sup>	Non-friable	G	See footnote 1&2
		12" vinyl floor tiles	23.6% chrysotile	All flooring	10-50 m <sup>2</sup>	Non-friable	G	
		Mastics under floor tiles	2.9% chrysotile	Below floor tiles	10-50 m <sup>2</sup>	Non-friable	G	
		Cement product	28.5% chrysotile	At countertop	10-50 m <sup>2</sup>	Non-friable	G	
2	207	Drywall joint compound	0.75% chrysotile	All walls and on ceiling above T-bar	>100 m <sup>2</sup>	Non-friable	G	See footnote 1&2
2	207A	Drywall joint compound	0.75% chrysotile	All walls and on ceiling above T-bar	<10 m <sup>2</sup>	Non-friable	G	See footnote 1&2
		12" vinyl floor tiles	23.6% chrysotile	All flooring	<10 m <sup>2</sup>	Non-friable	G	
		Mastics under floor tiles	2.9% chrysotile	Below floor tiles	<10 m <sup>2</sup>	Non-friable	G	

# UPDATED SURVEY OF ASBESTOS-CONTAINING MATERIALS

## ÉCOLE SECONDAIRE ÉTIENNE BRÛLÉ

Level	Room	Material	Asbestos Content	Location Within Space	Estimated Quantity	Friable or Non-Friable	Condition	Comments
2	208	Drywall joint compound	0.75% chrysotile	All walls and on ceiling above T-bar	10-50 m <sup>2</sup>	Non-friable	G	See footnote 1&2
		Cement piping	25% chrysotile	Above ceiling	3-15 m	Non-friable	G	
2	209	Drywall joint compound	0.75% chrysotile	All walls and on ceiling above T-bar	50-100 m <sup>2</sup>	Non-friable	G	See footnote 1&2
		12" vinyl floor tiles	23.6% chrysotile	All flooring	50-100 m <sup>2</sup>	Non-friable	G	
		Mastics under floor tiles	2.9% chrysotile	Below floor tiles	50-100 m <sup>2</sup>	Non-friable	G	
		Cement product	28.5% chrysotile	At countertop	10-50 m <sup>2</sup>	Non-friable	G	
2	210	Drywall joint compound	0.75% chrysotile	90% of walls and on ceiling above T-bar	>100 m <sup>2</sup>	Non-friable	G	See footnote 1&2
2	211	Drywall joint compound	0.75% chrysotile	Wall above door	<10 m <sup>2</sup>	Non-friable	G	See footnote 1&2
2	211A							Area not accessible at the time of survey. See footnote 1&2
2	212	Drywall joint compound	0.75% chrysotile	75% of walls and on ceiling above T-bar	>100 m <sup>2</sup>	Non-friable	G	See footnote 1&2
2	213	Drywall joint compound	0.75% chrysotile	All walls and on ceiling above T-bar	10-50 m <sup>2</sup>	Non-friable	G	See footnote 1&2
		12" vinyl floor tiles	23.6% chrysotile	All flooring	10-50 m <sup>2</sup>	Non-friable	G	
		Mastics under floor tiles	2.9% chrysotile	Below floor tiles	10-50 m <sup>2</sup>	Non-friable	G	

# UPDATED SURVEY OF ASBESTOS-CONTAINING MATERIALS

## ÉCOLE SECONDAIRE ÉTIENNE BRÛLÉ

Level	Room	Material	Asbestos Content	Location Within Space	Estimated Quantity	Friable or Non-Friable	Condition	Comments
2	214	Drywall joint compound	0.75% chrysotile	90% of walls and on ceiling above T-bar	>100 m <sup>2</sup>	Non-friable	G	12" vinyl floor tiles reportedly installed post-2003. See footnote 1&2
2	215	Drywall joint compound	0.75% chrysotile	10% of walls and on ceiling above T-bar	50-100 m <sup>2</sup>	Non-friable	G	See footnote 1&2
		12" vinyl floor tiles	23.6% chrysotile	All flooring	50-100 m <sup>2</sup>	Non-friable	G	
		Mastics under floor tiles	2.9% chrysotile	Below floor tiles	50-100 m <sup>2</sup>	Non-friable	G	
		Cement piping	25% chrysotile	Above ceiling	3-15 m	Non-friable	G	
2	216	Drywall joint compound	0.75% chrysotile	25% of walls	<10 m <sup>2</sup>	Non-friable	G	See footnote 1&2
		12" vinyl floor tiles	23.6% chrysotile	All flooring	10-50 m <sup>2</sup>	Non-friable	G	
		Mastics under floor tiles	2.9% chrysotile	Below floor tiles	10-50 m <sup>2</sup>	Non-friable	G	
2	217	12" vinyl floor tiles	23.6% chrysotile	All flooring	10-50 m <sup>2</sup>	Non-friable	G	See footnote 1&2
		Mastics under floor tiles	2.9% chrysotile	Below floor tiles	10-50 m <sup>2</sup>	Non-friable	G	
2	218	Drywall joint compound	0.75% chrysotile	All ceiling	10-50 m <sup>2</sup>	Non-friable	G	See footnote 1&2
2	218A	Drywall joint compound	0.75% chrysotile	All ceiling	10-50 m <sup>2</sup>	Non-friable	G	See footnote 1&2
		Cement piping	25% chrysotile	Above ceiling	3-15 m	Non-friable	G	
		Pipe fitting insulation	40% chrysotile	Above ceiling	<5 fittings	Friable	G	
2	219	Drywall joint compound	0.75% chrysotile	50% of walls and 90% of ceiling	10-50 m <sup>2</sup>	Non-friable	G	See footnote 1&2



# UPDATED SURVEY OF ASBESTOS-CONTAINING MATERIALS

## ÉCOLE SECONDAIRE ÉTIENNE BRÛLÉ

Level	Room	Material	Asbestos Content	Location Within Space	Estimated Quantity	Friable or Non-Friable	Condition	Comments
		12" vinyl floor tiles	23.6% chrysotile	All flooring	10-50 m <sup>2</sup>	Non-friable	G	
		Mastics under floor tiles	2.9% chrysotile	Below floor tiles	10-50 m <sup>2</sup>	Non-friable	G	
2	220	Drywall joint compound	0.75% chrysotile	10% of walls and on ceiling above T-bar	10-50 m <sup>2</sup>	Non-friable	G	See footnote 1&2
		12" vinyl floor tiles	23.6% chrysotile	All flooring	10-50 m <sup>2</sup>	Non-friable	G	
		Mastics under floor tiles	2.9% chrysotile	Below floor tiles	10-50 m <sup>2</sup>	Non-friable	G	
2	221	Drywall joint compound	0.75% chrysotile	All ceiling	10-50 m <sup>2</sup>	Non-friable	G	See footnote 1&2
		Cement piping	25% chrysotile	Below ceiling	3-15 m	Non-friable	G	
		Pipe fitting insulation	40% chrysotile	Below ceiling	10-20 fittings	Friable	G	
		Pipe straight insulation	6.3% chrysotile	Below ceiling	15-30 m	Friable	G	
2	221A	Drywall joint compound	0.75% chrysotile	All ceiling	10-50 m <sup>2</sup>	Non-friable	G	See footnote 1&2
2	221B							Area not accessible at the time of survey. See footnote 1&2
2	221C	Drywall joint compound	0.75% chrysotile	All ceiling	10-50 m <sup>2</sup>	Non-friable	G	See footnote 1&2
2	221D							Area not accessible at the time of survey. See footnote 1&2

# UPDATED SURVEY OF ASBESTOS-CONTAINING MATERIALS

## ÉCOLE SECONDAIRE ÉTIENNE BRÛLÉ

Level	Room	Material	Asbestos Content	Location Within Space	Estimated Quantity	Friable or Non-Friable	Condition	Comments
2	222/ 222A	Drywall joint compound	0.75% chrysotile	All ceiling	10-50 m <sup>2</sup>	Non-friable	G	See footnote 1&2
2	223/ 223A	Drywall joint compound	0.75% chrysotile	All ceiling	10-50 m <sup>2</sup>	Non-friable	G	See footnote 1&2
2	224	Drywall joint compound	0.75% chrysotile	All ceiling	10-50 m <sup>2</sup>	Non-friable	G	See footnote 1&2
2	225							Area not accessible at the time of survey. See footnote 1&2
2	226/ 226A	Drywall joint compound	0.75% chrysotile	All ceiling	10-50 m <sup>2</sup>	Non-friable	G	See footnote 1&2
2	227	Drywall joint compound	0.75% chrysotile	Wall above door	<10 m <sup>2</sup>	Non-friable	G	See footnote 1&2
		12" vinyl floor tiles	23.6% chrysotile	All flooring	50-100 m <sup>2</sup>	Non-friable	G	
		Mastics under floor tiles	2.9% chrysotile	Below floor tiles	50-100 m <sup>2</sup>	Non-friable	G	
		Cement piping	25% chrysotile	Above ceiling	3-15 m	Non-friable	G	
2	Corridor 201	Drywall joint compound	0.75% chrysotile	40% of walls	10-50 m <sup>2</sup>	Non-friable	G	See footnote 1&2
		12" vinyl floor tiles	23.6% chrysotile	All flooring	50-100 m <sup>2</sup>	Non-friable	G	
		Mastics under floor tiles	2.9% chrysotile	Below floor tiles	50-100 m <sup>2</sup>	Non-friable	G	
2	Corridor 202	Drywall joint compound	0.75% chrysotile	All walls	10-50 m <sup>2</sup>	Non-friable	G	See footnote 1&2
		12" vinyl floor tiles	23.6% chrysotile	All flooring	10-50 m <sup>2</sup>	Non-friable	G	

# UPDATED SURVEY OF ASBESTOS-CONTAINING MATERIALS

## ÉCOLE SECONDAIRE ÉTIENNE BRÛLÉ

Level	Room	Material	Asbestos Content	Location Within Space	Estimated Quantity	Friable or Non-Friable	Condition	Comments
		Mastics under floor tiles	2.9% chrysotile	Below floor tiles	10-50 m <sup>2</sup>	Non-friable	G	
2	Corridor 203	Drywall joint compound	0.75% chrysotile	50% of walls	10-50 m <sup>2</sup>	Non-friable	G	See footnote 1&2
		12" vinyl floor tiles	23.6% chrysotile	All flooring	10-50 m <sup>2</sup>	Non-friable	G	
		Mastics under floor tiles	2.9% chrysotile	Below floor tiles	10-50 m <sup>2</sup>	Non-friable	G	
2	Corridor 204	Drywall joint compound	0.75% chrysotile	50% of walls and on ceiling above T-bar	50-100 m <sup>2</sup>	Non-friable	G	12" vinyl floor tiles reportedly installed post-2003. See footnote 1&2
2	Corridor 205	Drywall joint compound	0.75% chrysotile	20% of walls and on ceiling above T-bar	10-50 m <sup>2</sup>	Non-friable	G	See footnote 1&2
		12" vinyl floor tiles	23.6% chrysotile	All flooring	50-100 m <sup>2</sup>	Non-friable	G	
		Mastics under floor tiles	2.9% chrysotile	Below floor tiles	50-100 m <sup>2</sup>	Non-friable	G	
		Cement piping	25% chrysotile	Above ceiling	3-15 m	Non-friable	G	
2	Corridor 206	Drywall joint compound	0.75% chrysotile	Wall above lockers	10-50 m <sup>2</sup>	Non-friable	G	See footnote 1&2
		12" vinyl floor tiles	23.6% chrysotile	All flooring	>100 m <sup>2</sup>	Non-friable	G	
		Mastics under floor tiles	2.9% chrysotile	Below floor tiles	>100 m <sup>2</sup>	Non-friable	G	
2	Corridor 207	Drywall joint compound	0.75% chrysotile	Wall above lockers	10-50 m <sup>2</sup>	Non-friable	G	See footnote 1&2
		12" vinyl floor tiles	23.6% chrysotile	All flooring	50-100 m <sup>2</sup>	Non-friable	G	
		Mastics under floor tiles	2.9% chrysotile	Below floor tiles	50-100 m <sup>2</sup>	Non-friable	G	

## UPDATED SURVEY OF ASBESTOS-CONTAINING MATERIALS

### ÉCOLE SECONDAIRE ÉTIENNE BRÛLÉ

Level	Room	Material	Asbestos Content	Location Within Space	Estimated Quantity	Friable or Non-Friable	Condition	Comments
2	Stairwell A2	Drywall joint compound	0.75% chrysotile	30% of walls	10-50 m <sup>2</sup>	Non-friable	G	See footnote 1&2
2	Stairwell B2	Drywall joint compound	0.75% chrysotile	10% of walls	<10 m <sup>2</sup>	Non-friable	G	See footnote 1&2
2	Stairwell C2	Drywall joint compound	0.75% chrysotile	Wall above door	<10 m <sup>2</sup>	Non-friable	G	See footnote 1&2

#### **NOTES:**

< = Less than.

> = Greater than.

Condition: G = Good.  
F = Fair.  
P = Poor.

NACMO: No Asbestos-Containing Materials Observed.

#### Footnotes:

(1) caulking on interior door frames.

(2) fireproofing assumed to be present on columns above solid ceilings, behind masonry walls and behind other building components.

Asbestos may also be present in locations that are presently inaccessible (e.g., in pipe chases, behind walls, above suspended gypsum board or plaster ceilings, and below carpets).

## 4 DISCUSSION

The owner of a building is required to provide information on the locations of asbestos containing material to:

- i) any person who is an “occupier”<sup>(1)</sup> of the building. The occupier is then responsible for providing the information to their own employees;
- ii) any prospective constructors, contractors and subcontractors prior to requesting tenders or arranging for the demolition, alteration or repair of all or part of a building. The information to be provided shall identify whether any material that is likely to be handled, dealt with, disturbed or removed is asbestos-containing material; describe the condition of the material; state whether the material is friable or non-friable; and contain drawings, plans and specifications, as appropriate, to show the locations of material;
- iii) any employer with whom the owner arranges or contracts for work not described in ii) above that may involve asbestos-containing material or is to be carried out in close proximity to and may disturb the material;
- iv) owner’s staff, if they perform work that involves asbestos-containing material or work that is to be carried out in close proximity to and may disturb the material.

If material suspected of containing asbestos which is not identified in the asbestos survey records is discovered during the course of any work in a facility, then either the constructor or the owner is required to immediately notify (orally and in writing):

- a) an inspector at the office of the Ministry of Labour nearest the workplace;
- b) the owner;
- c) the contractor; and
- d) the joint health and safety committee or the health and safety representative.

The owner is also responsible for providing tenderers with a list of designated substances (including asbestos) at the tendering stage of a project.

This report was prepared as part of the asbestos management program, not for the purposes of construction or renovation projects. Additional investigation and testing may be required prior to construction or renovation projects.

Bulk sampling of building materials was carried out in accordance with the minimum sampling requirements specified in Table 1 of O.Reg. 278/05. We recommend that additional samples of certain types of material which may have been mixed on site at the time of construction (plaster, drywall joint compound, ceiling

---

<sup>(1)</sup> An “occupier” is defined as:

- (a) a person who is in physical possession of premises, or
- (b) a person who has responsibility for and control over the condition of premises or the activities carried on there, or control over persons allowed to enter the premises.

## UPDATED SURVEY OF ASBESTOS-CONTAINING MATERIALS

### ÉCOLE SECONDAIRE ÉTIENNE BRÛLÉ

texture coat, etc.) be tested for asbestos content prior to the disturbance of these materials at the time of renovations, alterations or demolition work.

Asbestos may also be present in materials which were not sampled during the course of the asbestos survey carried out by Arcadis, including, but not limited to, roofing materials, fire doors, mastics or cementitious levelling compound under vinyl flooring, acoustic ceiling tile adhesive, grout, caulking, gaskets in piping, internal components of boilers, paints and coatings, components of electrical equipment, (e.g. – electrical wiring insulation, non-metallic sheathed cable, electrical panel partitions, arc chutes, high-grade electrical paper, etc.), concrete, etc., and/or in locations that are presently inaccessible (e.g., in pipe chases, behind walls, above suspended gypsum board or plaster ceilings, and below carpets). Asbestos may also be present in the form of vermiculite insulation in cavities in concrete or cement block walls (used as in-fill insulation). Confirmatory testing of any such materials could be undertaken as the need arises (i.e., at the time of renovations, modifications or demolition) or the materials can be assumed to contain asbestos based on findings in adjacent areas.

As noted above, if any materials which may contain asbestos and which were not tested during the course of the asbestos survey are discovered during any construction activities, the work shall not proceed until such time as the required notifications have been made and an appropriate course of action is determined.

## 5 USE AND LIMITATIONS OF THIS REPORT

This report, prepared for Conseil scolaire Viamonde, does not provide certification or warranty, expressed or implied, that the investigation conducted by Arcadis identified all asbestos-containing materials present in the subject facilities. The work undertaken by Arcadis was directed to provide information on the presence of asbestos-containing building materials based on visual inspection of readily accessible areas of the building and on the results of laboratory analysis of bulk samples of material gathered in the course of the visual inspection. The survey did not include for identification of asbestos in process materials, equipment (including electrical equipment and wiring), furniture (e.g., chairs, table tops, chalkboards, etc.), nor material outside of the building (e.g. asphaltic pavement).

This report was prepared by Arcadis for Conseil scolaire Viamonde. Any use which a third party makes of the report, or reliance on, or decisions to be based on it, is the responsibility of such third parties.

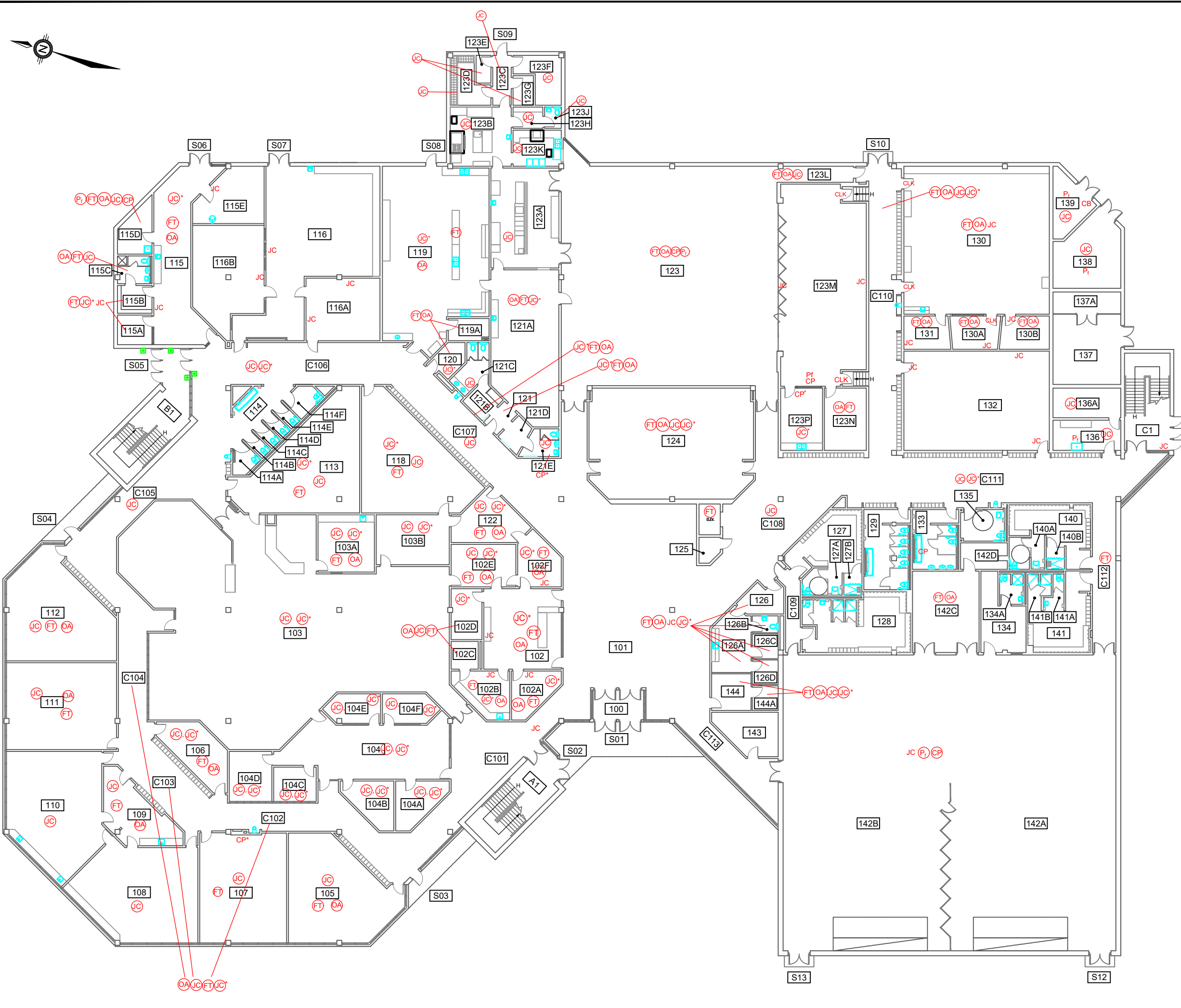
# APPENDIX A

## Floor Plans





CITY:\Redd\DIV\GROUP\Redd\ DB\Redd\ LD\Opt\ PIC\Opt\ PM\Redd\ TM\Opt\ LVR\Opt\ON=OFF=REF\*  
C:\Users\ld01212\Documents\Arcadis\AUS\CONSEIL SCOLAIRE VIAMONDE-ALL-NORTH YORK\Ontario\Project Files\2022\01-10 Progress\01-DWG\30075628 École secondaire Étienne Brûlé ACM Drawings\30075628 École secondaire Étienne Brûlé ACM.dwg LAYOUT: 1ST FL 11X17 SAVED: 8/25/2022 2:15 PM  
ACADVER: 24-1S (LMS TECH) PAGES: 3 PLOT: FULL CTB PLOTTED: 8/25/2022 2:20 PM BY: THORWATH, CHANDRAKANTH  
XREFS: IMAGES: PROJECTNAME: -----



LEGEND:

- 25 FUNCTIONAL SPACE
- THROUGHOUT FUNCTIONAL SPACE
- \* ABOVE CEILING ASSEMBLY
- JC ASBESTOS DRYWALL JOINT COMPOUND
- FT ASBESTOS FLOORING
- CP ASBESTOS CEMENT PRODUCT
- P<sub>i</sub> ASBESTOS ON PIPE FITTINGS
- OA ASBESTOS FLOOR TILE MASTIC
- CLK ASBESTOS CAULKING (SEE NOTES)
- CB ASBESTOS CEMENT BOARD
- fp ASBESTOS FIREPROOFING (SEE NOTES)

NOTES:

- ASBESTOS CONTAINING FIREPROOFING IS ASSUMED TO BE PRESENT ON COLUMNS ABOVE SOLID CEILINGS, BEHIND MASONRY WALLS AND BEHIND OTHER BUILDING COMPONENTS THROUGHOUT THE FACILITY.
- ASBESTOS CONTAINING CAULKING IS PRESENT ON ALL INTERIOR DOOR FRAMES EXCEPT FOR ROOMS 102-113, 127, 128, 128A 130B 131, 132, 135, 135A, 140, 140A AND 141.

REVISIONS:

No.	Date:	By:	Revisions

REFERENCE:

- 



CONSEIL SCOLAIRE VIAMONDE  
**UPDATED ASBESTOS SURVEY  
LOCATIONS OF ASBESTOS-CONTAINING  
MATERIALS**

ÉCOLE SECONDAIRE ÉTIENNE BRÛLÉ  
300, chemin Banbury, North York, Ontario

FIRST FLOOR

Drawn By: B.R.	Approved By: D.K.	Project No: 30075628
Date: AUG 2022	Scale: N.T.S	Drawing No: 30075628-1

CITY:(Red) DIV:(GROUP:(Red) DB:(Red) LD:(Opt) PIC:(Opt) PM:(Red) TM:(Opt) LVR:(Opt)ON="OFF=REF"  
C:\Users\td1012\Documents\Arcadis\AUS-CONSEIL SCOLAIRE VIAMONDE-ALL-NORTH YORK\Ontario\Project Files\2022\01-1n Progress\01-DWG\30075628 École secondaire Étienne Brûlé ACM.dwg LAYOUT: 2ND FL 11X17 SAVED: 8/25/2022 2:15 PM  
ACADVER: 24-1S (LMS TECH) PAGES: 24 PLOT: 8/25/2022 2:22 PM BY: THORWATH, CHANDRAKANTH  
XREFS: IMAGES: PROJECTNAME: ---



LEGEND:

- 25 FUNCTIONAL SPACE
- THROUGHOUT FUNCTIONAL SPACE
- \* ABOVE CEILING ASSEMBLY
- JC ASBESTOS DRYWALL JOINT COMPOUND
- FT ASBESTOS FLOORING
- CP ASBESTOS CEMENT PRODUCT
- P<sub>f</sub> ASBESTOS ON PIPE FITTINGS
- OA ASBESTOS FLOOR TILE MASTIC
- tp ASBESTOS FIREPROOFING (SEE NOTES)
- CLK ASBESTOS CAULKING (SEE NOTES)

NOTES:

- ALL INTERIOR DOOR FRAME CAULKING IS ASSUMED TO CONTAIN ASBESTOS.
- ASBESTOS CONTAINING FIREPROOFING IS ASSUMED TO BE PRESENT ON COLUMNS ABOVE SOLID CEILINGS, BEHIND MASONRY WALLS AND BEHIND OTHER BUILDING COMPONENTS THROUGHOUT THE FACILITY.

REVISIONS:

No.	Date:	By:	Revisions

REFERENCE:

- 



CONSEIL SCOLAIRE VIAMONDE

UPDATED ASBESTOS SURVEY  
LOCATIONS OF ASBESTOS-CONTAINING  
MATERIALS

ÉCOLE SECONDAIRE ÉTIENNE BRÛLÉ  
300, chemin Banbury, North York, Ontario

SECOND FLOOR

Drawn By: B.R.	Approved By: D.K.	Project No: 30075628
Date: AUG 2022	Scale: N.T.S	Drawing No: 30075628-2

# APPENDIX B

Laboratory Reports





# EMSL Canada Inc.

2756 Slough Street Mississauga, ON L4T 1G3  
Phone/Fax: (289) 997-4602 / (289) 997-4607  
<http://www.EMSL.com> / [torontolab@emsl.com](mailto:torontolab@emsl.com)

EMSL Canada Order 552108797  
Customer ID: 55DCSL97  
Customer PO: 30075628  
Project ID:

**Attn:** Dwayne Kellyman  
ARCADIS Canada Inc.  
121 Granton Drive  
Unit 12  
Richmond Hill, ON L4B 3N4  
**Proj:** Etienne Brule / 30075628

**Phone:** (905) 882-5984  
**Fax:** (905) 882-8962  
**Collected:**  
**Received:** 6/02/2021  
**Analyzed:** 6/02/2021

## Test Report: Asbestos Analysis of Bulk Materials for Ontario Regulation 278/05 via EPA600/R-93/116 Method

**Client Sample ID:** 1A **Lab Sample ID:** 552108797-0001

**Sample Description:** Fireproofing on Column Rm 135

TEST	Analyzed Date	Color	Non-Asbestos		Asbestos	Comment
			Fibrous	Non-Fibrous		
PLM	6/02/2021	Gray	70.0%	5.0%	25% Chrysotile	

**Client Sample ID:** 1B **Lab Sample ID:** 552108797-0002

**Sample Description:** Fireproofing on Column Rm 135C

TEST	Analyzed Date	Color	Non-Asbestos		Asbestos	Comment
			Fibrous	Non-Fibrous		
PLM	6/02/2021					Positive Stop (Not Analyzed)

**Client Sample ID:** 1C **Lab Sample ID:** 552108797-0003

**Sample Description:** Fireproofing on Column Rm 135C

TEST	Analyzed Date	Color	Non-Asbestos		Asbestos	Comment
			Fibrous	Non-Fibrous		
PLM	6/02/2021					Positive Stop (Not Analyzed)

### Analyst(s):

Caroline Allen PLM (1)

### Reviewed and approved by:

Matthew Davis or other approved signatory  
or Other Approved Signatory

None Detected = <0.1%. EMSL maintains liability limited to cost of analysis. Interpretation and use of test results are the responsibility of the client. This report relates only to the samples reported above, and may not be reproduced, except in full, without written approval by EMSL. EMSL bears no responsibility for sample collection activities or analytical method limitations. The report reflects the samples as received. Results are generated from the field sampling data (sampling volumes and areas, locations, etc.) provided by the client on the Chain of Custody. Samples are within quality control criteria and met method specifications unless otherwise noted. Estimation of uncertainty available upon request. This report is a summary of multiple methods of analysis, fully compliant reports are available upon request. A combination of PLM and TEM analysis may be necessary to ensure consistently reliable detection of asbestos. This report must not be used to claim product endorsement by NVLAP of any agency or the U.S. Government.

Samples analyzed by EMSL Canada Inc. Mississauga, ON NVLAP Lab Code 200877-0

Initial report from: 06/02/2021 03:47



# EMSL Canada Inc.

2756 Slough Street Mississauga, ON L4T 1G3  
Phone/Fax: (289) 997-4602 / (289) 997-4607  
<http://www.EMSL.com> / [torontolab@emsl.com](mailto:torontolab@emsl.com)

EMSL Canada Order 552109851  
Customer ID: 55DCSL97  
Customer PO: 30075628  
Project ID:

**Attn:** Dwayne Kellyman  
ARCADIS Canada Inc.  
121 Granton Drive  
Unit 12  
Richmond Hill, ON L4B 3N4  
**Proj:** 30075628 / Ecole elementaire Etienne Brule

**Phone:** (905) 882-5984  
**Fax:** (905) 882-8962  
**Collected:**  
**Received:** 6/18/2021  
**Analyzed:** 6/24/2021

## Test Report: Asbestos Analysis of Bulk Materials for Ontario Regulation 278/05 via EPA600/R-93/116 Method

**Client Sample ID:** 1A **Lab Sample ID:** 552109851-0001

**Sample Description:** Cement pipe (Transite) Room 135

TEST	Analyzed Date	Color	Non-Asbestos		Asbestos	Comment
			Fibrous	Non-Fibrous		
PLM	6/24/2021	White	0.0%	80.0%	15% Chrysotile 5% Crocidolite	

**Client Sample ID:** 1B **Lab Sample ID:** 552109851-0002

**Sample Description:** Cement pipe (Transite) Room 135C

TEST	Analyzed Date	Color	Non-Asbestos		Asbestos	Comment
			Fibrous	Non-Fibrous		
PLM	6/24/2021				Positive Stop (Not Analyzed)	

**Client Sample ID:** 1C **Lab Sample ID:** 552109851-0003

**Sample Description:** Cement pipe (Transite) Room 140

TEST	Analyzed Date	Color	Non-Asbestos		Asbestos	Comment
			Fibrous	Non-Fibrous		
PLM	6/24/2021				Positive Stop (Not Analyzed)	

### Analyst(s):

Kevin Nankisore PLM (1)

### Reviewed and approved by:

Matthew Davis or other approved signatory  
or Other Approved Signatory

None Detected = <0.1%. EMSL maintains liability limited to cost of analysis. Interpretation and use of test results are the responsibility of the client. This report relates only to the samples reported above, and may not be reproduced, except in full, without written approval by EMSL. EMSL bears no responsibility for sample collection activities or analytical method limitations. The report reflects the samples as received. Results are generated from the field sampling data (sampling volumes and areas, locations, etc.) provided by the client on the Chain of Custody. Samples are within quality control criteria and met method specifications unless otherwise noted. Estimation of uncertainty available upon request. This report is a summary of multiple methods of analysis, fully compliant reports are available upon request. A combination of PLM and TEM analysis may be necessary to ensure consistently reliable detection of asbestos. This report must not be used to claim product endorsement by NVLAP of any agency or the U.S. Government.

Samples analyzed by EMSL Canada Inc. Mississauga, ON NVLAP Lab Code 200877-0

Initial report from: 06/25/2021 15:32:51



# EMSL Canada Inc.

2756 Slough Street Mississauga, ON L4T 1G3  
 Phone/Fax: (289) 997-4602 / (289) 997-4607  
<http://www.EMSL.com> / [torontolab@emsl.com](mailto:torontolab@emsl.com)

EMSL Canada Order 552100522  
 Customer ID: 55DCSL97  
 Customer PO: 30075628  
 Project ID:

**Attn:** Dwayne Kellyman  
 ARCADIS Canada Inc.  
 121 Granton Drive  
 Unit 12  
 Richmond Hill, ON L4B 3N4  
**Proj:** 30075628 / Ecole elementaire Etienne Brule

**Phone:** (905) 882-5984  
**Fax:** (905) 882-8962  
**Collected:**  
**Received:** 1/14/2021  
**Analyzed:** 2/23/2021

## Test Report: Asbestos Analysis of Bulk Materials for Ontario Regulation 278/05 via EPA600/R-93/116 Method

Client Sample ID: 1A

Lab Sample ID: 552100522-0001

Sample Description: Room 105/2'x4' ceiling tile pinhole small fissure on 4' (fire rated)

TEST	Analyzed Date	Color	Non-Asbestos		Asbestos	Comment
			Fibrous	Non-Fibrous		
PLM	1/14/2021	Gray	90.0%	10.0%	None Detected	

Client Sample ID: 1B

Lab Sample ID: 552100522-0002

Sample Description: Room 109/2'x4' ceiling tile pinhole small fissure on 4' (fire rated)

TEST	Analyzed Date	Color	Non-Asbestos		Asbestos	Comment
			Fibrous	Non-Fibrous		
PLM	1/14/2021	Gray	90.0%	10.0%	None Detected	

Client Sample ID: 1C

Lab Sample ID: 552100522-0003

Sample Description: Room 110/2'x4' ceiling tile pinhole small fissure on 4' (fire rated)

TEST	Analyzed Date	Color	Non-Asbestos		Asbestos	Comment
			Fibrous	Non-Fibrous		
PLM	1/15/2021	Gray	90.0%	10.0%	None Detected	

Client Sample ID: 2A

Lab Sample ID: 552100522-0004

Sample Description: Room 140/12' vinyl floor tile - white with dark green fleck

TEST	Analyzed Date	Color	Non-Asbestos		Asbestos	Comment
			Fibrous	Non-Fibrous		
PLM Grav. Reduction	1/15/2021	White/Blue	0.0%	100%	None Detected	
TEM Grav. Reduction	2/23/2021	White/Blue	0.0%	100.0%	None Detected	

Client Sample ID: 2B

Lab Sample ID: 552100522-0005

Sample Description: Room 140/12' vinyl floor tile - white with dark green fleck

TEST	Analyzed Date	Color	Non-Asbestos		Asbestos	Comment
			Fibrous	Non-Fibrous		
PLM Grav. Reduction	1/15/2021	White/Blue	0.0%	100%	None Detected	

Client Sample ID: 2C

Lab Sample ID: 552100522-0006

Sample Description: Room 140/12' vinyl floor tile - white with dark green fleck

TEST	Analyzed Date	Color	Non-Asbestos		Asbestos	Comment
			Fibrous	Non-Fibrous		
PLM Grav. Reduction	1/15/2021	White/Blue	0.0%	100%	None Detected	

Client Sample ID: 3A

Lab Sample ID: 552100522-0007

Sample Description: Room 140C/12" peel and stick tile

TEST	Analyzed Date	Color	Non-Asbestos		Asbestos	Comment
			Fibrous	Non-Fibrous		
PLM Grav. Reduction	1/15/2021	Beige	0.0%	100%	None Detected	



# EMSL Canada Inc.

2756 Slough Street Mississauga, ON L4T 1G3  
 Phone/Fax: (289) 997-4602 / (289) 997-4607  
<http://www.EMSL.com> / [torontolab@emsl.com](mailto:torontolab@emsl.com)

EMSL Canada Order 552100522  
 Customer ID: 55DCSL97  
 Customer PO: 30075628  
 Project ID:

## Test Report: Asbestos Analysis of Bulk Materials for Ontario Regulation 278/05 via EPA600/R-93/116 Method

**Client Sample ID:** 3B **Lab Sample ID:** 552100522-0008

**Sample Description:** Room 140C/12" peel and stick tile

TEST	Analyzed Date	Color	Non-Asbestos		Asbestos	Comment
			Fibrous	Non-Fibrous		
PLM Grav. Reduction	1/15/2021	Beige	0.0%	100%	None Detected	

**Client Sample ID:** 3C **Lab Sample ID:** 552100522-0009

**Sample Description:** Room 140C/12" peel and stick tile

TEST	Analyzed Date	Color	Non-Asbestos		Asbestos	Comment
			Fibrous	Non-Fibrous		
PLM Grav. Reduction	1/15/2021	Beige	0.0%	100%	None Detected	

**Client Sample ID:** 4A **Lab Sample ID:** 552100522-0010

**Sample Description:** Room 140/Black and yellow floor tile mastic

TEST	Analyzed Date	Color	Non-Asbestos		Asbestos	Comment
			Fibrous	Non-Fibrous		
PLM	1/14/2021	Black/Yellow	0.0%	100.0%	None Detected	

**Client Sample ID:** 4B **Lab Sample ID:** 552100522-0011

**Sample Description:** Room 140C/Black and yellow floor tile mastic

TEST	Analyzed Date	Color	Non-Asbestos		Asbestos	Comment
			Fibrous	Non-Fibrous		
PLM	1/14/2021	Black/Yellow	0.0%	100.0%	None Detected	

**Client Sample ID:** 4C **Lab Sample ID:** 552100522-0012

**Sample Description:** Room 140/Black and yellow floor tile mastic

TEST	Analyzed Date	Color	Non-Asbestos		Asbestos	Comment
			Fibrous	Non-Fibrous		
PLM	1/15/2021	Black/Yellow	0.0%	100.0%	None Detected	

**Client Sample ID:** 5A **Lab Sample ID:** 552100522-0013

**Sample Description:** Room 127B/1"x1" red ceramic floor tile -grout

TEST	Analyzed Date	Color	Non-Asbestos		Asbestos	Comment
			Fibrous	Non-Fibrous		
PLM	1/15/2021	Gray	0.0%	100.0%	<1% Chrysotile	Insufficient material for PC
400 PLM Pt Ct	2/23/2021	Gray	0.0%	100.0%	<0.25% Chrysotile	Sample 5C used for point count

**Client Sample ID:** 5B **Lab Sample ID:** 552100522-0014A

**Sample Description:** Room 128A/1"x1" red ceramic floor tile -grout

TEST	Analyzed Date	Color	Non-Asbestos		Asbestos	Comment
			Fibrous	Non-Fibrous		
PLM	1/14/2021	Gray	0.0%	100.0%	<1% Chrysotile	
400 PLM Pt Ct	1/14/2021	Gray	0.0%	100.0%	<0.25% Chrysotile	

**Client Sample ID:** 5C **Lab Sample ID:** 552100522-0015

**Sample Description:** Room 140B/1"x1" red ceramic floor tile -grout

TEST	Analyzed Date	Color	Non-Asbestos		Asbestos	Comment
			Fibrous	Non-Fibrous		
PLM	1/15/2021	Gray	0.0%	100.0%	<1% Chrysotile	
400 PLM Pt Ct	1/15/2021	Gray	0.0%	100.0%	<0.25% Chrysotile	





# EMSL Canada Inc.

2756 Slough Street Mississauga, ON L4T 1G3  
Phone/Fax: (289) 997-4602 / (289) 997-4607  
<http://www.EMSL.com> / [torontolab@emsl.com](mailto:torontolab@emsl.com)

EMSL Canada Order 552100522  
Customer ID: 55DCSL97  
Customer PO: 30075628  
Project ID:

## Test Report: Asbestos Analysis of Bulk Materials for Ontario Regulation 278/05 via EPA600/R-93/116 Method

**Client Sample ID:** 6A

**Lab Sample ID:** 552100522-0016

**Sample Description:** Room 127B/1"x1' red ceramic floor tile - mortar bed

TEST	Analyzed Date	Color	Non-Asbestos		Asbestos	Comment
			Fibrous	Non-Fibrous		
PLM	1/14/2021	Gray	0.0%	100.0%	<1% Chrysotile	
400 PLM Pt Ct	1/14/2021	Gray	0.0%	100.0%	<0.25% Chrysotile	

**Client Sample ID:** 6B

**Lab Sample ID:** 552100522-0017

**Sample Description:** Room 128A/1"x1' red ceramic floor tile - mortar bed

TEST	Analyzed Date	Color	Non-Asbestos		Asbestos	Comment
			Fibrous	Non-Fibrous		
PLM	1/14/2021	Gray	0.0%	100.0%	<1% Chrysotile	
400 PLM Pt Ct	1/14/2021	Gray	0.0%	100.0%	<0.25% Chrysotile	

**Client Sample ID:** 6C

**Lab Sample ID:** 552100522-0018

**Sample Description:** Room 140B/1"x1' red ceramic floor tile - mortar bed

TEST	Analyzed Date	Color	Non-Asbestos		Asbestos	Comment
			Fibrous	Non-Fibrous		
PLM	1/15/2021	Gray	0.0%	100.0%	<1% Chrysotile	
400 PLM Pt Ct	1/15/2021	Gray	0.0%	100.0%	<0.25% Chrysotile	

**Client Sample ID:** 7A

**Lab Sample ID:** 552100522-0019

**Sample Description:** Room 127/12" Vinyl Floor Tile Mastic

TEST	Analyzed Date	Color	Non-Asbestos		Asbestos	Comment
			Fibrous	Non-Fibrous		
PLM	2/22/2021	Black	0.0%	100.0%	None Detected	

**Client Sample ID:** 7B

**Lab Sample ID:** 552100522-0020

**Sample Description:** Room 1135/12" Vinyl Floor Tile Mastic

TEST	Analyzed Date	Color	Non-Asbestos		Asbestos	Comment
			Fibrous	Non-Fibrous		
PLM	2/22/2021	Black	0.0%	100.0%	None Detected	

**Client Sample ID:** 7C

**Lab Sample ID:** 552100522-0021

**Sample Description:** Room 140A/12" Vinyl Floor Tile Mastic

TEST	Analyzed Date	Color	Non-Asbestos		Asbestos	Comment
			Fibrous	Non-Fibrous		
PLM	2/23/2021	Black	0.0%	100.0%	None Detected	





## EMSL Canada Inc.

2756 Slough Street Mississauga, ON L4T 1G3  
Phone/Fax: (289) 997-4602 / (289) 997-4607  
<http://www.EMSL.com> / [torontolab@emsl.com](mailto:torontolab@emsl.com)

EMSL Canada Order 552100522  
Customer ID: 55DCSL97  
Customer PO: 30075628  
Project ID:

### Test Report: Asbestos Analysis of Bulk Materials for Ontario Regulation 278/05 via EPA600/R-93/116 Method

---

#### Analyst(s):

---

Anne Balayboa	PLM (7) 400 PLM Pt Ct (3)
Caroline Allen	TEM Grav. Reduction (1)
Ioana Taina	PLM Grav. Reduction (4)
Kira Ramphal	PLM (1) 400 PLM Pt Ct (1)
Natalie D'Amico	PLM (5) 400 PLM Pt Ct (2)
Stephanie Achaiya	PLM (2)
Tiffany Pilon	PLM Grav. Reduction (2)

#### Reviewed and approved by:

Matthew Davis or other approved signatory  
or Other Approved Signatory

None Detected = <0.1%. EMSL maintains liability limited to cost of analysis. This report relates only to the samples reported above and may not be reproduced, except in full, without written approval by EMSL. EMSL bears no responsibility for sample collection activities or analytical method limitations. Interpretation and use of test results are the responsibility of the client. Samples received in good condition unless otherwise noted. This report must not be used to claim product endorsement by NVLAP of any agency or the U.S. Government

Samples analyzed by EMSL Canada Inc. Mississauga, ON NVLAP Lab Code 200877-0

Initial report from: 01/15/2021 12:20:38



# EMSL Canada Inc.

2756 Slough Street Mississauga, ON L4T 1G3  
Phone/Fax: (289) 997-4602 / (289) 997-4607  
<http://www.EMSL.com> / [torontolab@emsl.com](mailto:torontolab@emsl.com)

EMSL Canada Order 551900411  
Customer ID: 55DCSL97  
Customer PO: 702148-091  
Project ID:

**Attn:** Dwayne Kellyman  
ARCADIS Canada Inc.  
121 Granton Drive  
Unit 12  
Richmond Hill, ON L4B 3N4

**Phone:** (905) 882-5984  
**Fax:** (905) 882-8962  
**Collected:**  
**Received:** 1/14/2019  
**Analyzed:** 1/21/2019

**Proj:** Etienne Brule/ 702148-091

## Test Report: Asbestos Analysis of Bulk Materials for Ontario Regulation 278/05 via EPA600/R-93/116 Method

Client Sample ID: 1A

Lab Sample ID: 551900411-0001

Sample Description: Room 102/2' x 4' Ceiling Tile - Pinhole Random Fissure

TEST	Analyzed Date	Color	Non-Asbestos		Asbestos	Comment
			Fibrous	Non-Fibrous		
PLM	1/19/2019	Gray	80.0%	20.0%	None Detected	

Client Sample ID: 1B

Lab Sample ID: 551900411-0002

Sample Description: Corridor C205/2' x 4' Ceiling Tile - Pinhole Random Fissure

TEST	Analyzed Date	Color	Non-Asbestos		Asbestos	Comment
			Fibrous	Non-Fibrous		
PLM	1/19/2019	Gray	80.0%	20.0%	None Detected	

Client Sample ID: 1C

Lab Sample ID: 551900411-0003

Sample Description: Corridor C206/2' x 4' Ceiling Tile - Pinhole Random Fissure

TEST	Analyzed Date	Color	Non-Asbestos		Asbestos	Comment
			Fibrous	Non-Fibrous		
PLM	1/21/2019	Gray	80.0%	20.0%	None Detected	

Client Sample ID: 2A

Lab Sample ID: 551900411-0004

Sample Description: Room 102B/2' x 4' Ceiling Tile - Circular Pattern

TEST	Analyzed Date	Color	Non-Asbestos		Asbestos	Comment
			Fibrous	Non-Fibrous		
PLM	1/19/2019	Gray	80.0%	20.0%	None Detected	

Client Sample ID: 2B

Lab Sample ID: 551900411-0005

Sample Description: Corridor C107/2' x 4' Ceiling Tile - Circular Pattern

TEST	Analyzed Date	Color	Non-Asbestos		Asbestos	Comment
			Fibrous	Non-Fibrous		
PLM	1/21/2019	Gray	80.0%	20.0%	None Detected	

Client Sample ID: 3A

Lab Sample ID: 551900411-0006

Sample Description: Room 117/6" Red Ceramic Floor Tile - Grout (Grey)

TEST	Analyzed Date	Color	Non-Asbestos		Asbestos	Comment
			Fibrous	Non-Fibrous		
PLM	1/19/2019	Gray	0.0%	100.0%	None Detected	

Client Sample ID: 3B

Lab Sample ID: 551900411-0007

Sample Description: Room 129/6" Red Ceramic Floor Tile - Grout (Grey)

TEST	Analyzed Date	Color	Non-Asbestos		Asbestos	Comment
			Fibrous	Non-Fibrous		
PLM	1/19/2019	Gray	0.0%	100.0%	None Detected	



# EMSL Canada Inc.

2756 Slough Street Mississauga, ON L4T 1G3  
Phone/Fax: (289) 997-4602 / (289) 997-4607  
<http://www.EMSL.com> / [torontolab@emsl.com](mailto:torontolab@emsl.com)

EMSL Canada Order 551900411  
Customer ID: 55DCSL97  
Customer PO: 702148-091  
Project ID:

## Test Report: Asbestos Analysis of Bulk Materials for Ontario Regulation 278/05 via EPA600/R-93/116 Method

**Client Sample ID:** 3C **Lab Sample ID:** 551900411-0008

**Sample Description:** Room 222A/6" Red Ceramic Floor Tile - Grout (Grey)

TEST	Analyzed Date	Color	Non-Asbestos		Asbestos	Comment
			Fibrous	Non-Fibrous		
PLM	1/21/2019	Gray	0.0%	100.0%	None Detected	

**Client Sample ID:** 4A **Lab Sample ID:** 551900411-0009

**Sample Description:** Room 117/6" Red Ceramic Floor Tile - Mortar Bed (Grey)

TEST	Analyzed Date	Color	Non-Asbestos		Asbestos	Comment
			Fibrous	Non-Fibrous		
PLM	1/19/2019	Gray	0.0%	100.0%	<1% Chrysotile	

**Client Sample ID:** 4B **Lab Sample ID:** 551900411-0010

**Sample Description:** Room 129/6" Red Ceramic Floor Tile - Mortar Bed (Grey)

TEST	Analyzed Date	Color	Non-Asbestos		Asbestos	Comment
			Fibrous	Non-Fibrous		
PLM	1/19/2019	Gray	0.0%	100.0%	<1% Chrysotile	

**Client Sample ID:** 4C **Lab Sample ID:** 551900411-0011

**Sample Description:** Room 222A/6" Red Ceramic Floor Tile - Mortar Bed (Grey)

TEST	Analyzed Date	Color	Non-Asbestos		Asbestos	Comment
			Fibrous	Non-Fibrous		
PLM	1/21/2019	Gray	0.0%	100.0%	<1% Chrysotile	

**Client Sample ID:** 5A **Lab Sample ID:** 551900411-0012

**Sample Description:** Room 117/6" Grey Ceramic Floor Tile - Grout (Grey)

TEST	Analyzed Date	Color	Non-Asbestos		Asbestos	Comment
			Fibrous	Non-Fibrous		
PLM	1/19/2019	Gray	0.0%	100.0%	None Detected	

**Client Sample ID:** 5B **Lab Sample ID:** 551900411-0013

**Sample Description:** Room 133/6" Grey Ceramic Floor Tile - Grout (Grey)

TEST	Analyzed Date	Color	Non-Asbestos		Asbestos	Comment
			Fibrous	Non-Fibrous		
PLM	1/19/2019	Gray	0.0%	100.0%	None Detected	

**Client Sample ID:** 5C **Lab Sample ID:** 551900411-0014

**Sample Description:** Room 226A/6" Grey Ceramic Floor Tile - Grout (Grey)

TEST	Analyzed Date	Color	Non-Asbestos		Asbestos	Comment
			Fibrous	Non-Fibrous		
PLM	1/21/2019	Gray	0.0%	100.0%	None Detected	

**Client Sample ID:** 6A **Lab Sample ID:** 551900411-0015

**Sample Description:** Room 117/6" Grey Ceramic Floor Tile - Mortar Bed (White)

TEST	Analyzed Date	Color	Non-Asbestos		Asbestos	Comment
			Fibrous	Non-Fibrous		
PLM	1/19/2019	White	0.0%	100.0%	None Detected	



# EMSL Canada Inc.

2756 Slough Street Mississauga, ON L4T 1G3  
Phone/Fax: (289) 997-4602 / (289) 997-4607  
<http://www.EMSL.com> / [torontolab@emsl.com](mailto:torontolab@emsl.com)

EMSL Canada Order 551900411  
Customer ID: 55DCSL97  
Customer PO: 702148-091  
Project ID:

## Test Report: Asbestos Analysis of Bulk Materials for Ontario Regulation 278/05 via EPA600/R-93/116 Method

Client Sample ID: 6B

Lab Sample ID: 551900411-0016

Sample Description: Room 133/6" Grey Ceramic Floor Tile - Mortar Bed (White)

TEST	Analyzed Date	Color	Non-Asbestos		Asbestos	Comment
			Fibrous	Non-Fibrous		
PLM	1/19/2019	White	0.0%	100.0%	None Detected	

Client Sample ID: 6C

Lab Sample ID: 551900411-0017

Sample Description: Room 226A/6" Grey Ceramic Floor Tile - Mortar Bed (White)

TEST	Analyzed Date	Color	Non-Asbestos		Asbestos	Comment
			Fibrous	Non-Fibrous		
PLM	1/21/2019	White	0.0%	100.0%	None Detected	

### Analyst(s):

Khaledeh Tahmasbipoor PLM (6)  
Kira Ramphal PLM (11)

### Reviewed and approved by:

Matthew Davis or other approved signatory  
or Other Approved Signatory

None Detected = <0.1%. EMSL maintains liability limited to cost of analysis. This report relates only to the samples reported above and may not be reproduced, except in full, without written approval by EMSL. EMSL bears no responsibility for sample collection activities or analytical method limitations. Interpretation and use of test results are the responsibility of the client. Samples received in good condition unless otherwise noted. This report must not be used to claim product endorsement by NVLAP of any agency of the U.S. Government.

Samples analyzed by EMSL Canada Inc. Mississauga, ON NVLAP Lab Code 200877-0

Initial report from: 01/21/2019 08:12:43



## EMSL Canada Inc.

2756 Slough Street Mississauga, ON L4T 1G3

Phone/Fax: (289) 997-4602 / (289) 997-4607

<http://www.EMSL.com> / [torontolab@emsl.com](mailto:torontolab@emsl.com)

EMSL Canada Order: 551900411

Customer ID: 55DCSL97

Customer PO: 702148-091

Project ID:

**Attention:** Dwayne Kellyman  
ARCADIS Canada Inc.  
121 Granton Drive  
Unit 12  
Richmond Hill, ON L4B 3N4

**Project:** Etienne Brule/ 702148-091

**Phone:** (647) 966-7397

**Fax:** (905) 882-8962

**Received:** 01/14/2019 5:00 PM

**Analysis Date:** 01/19/2019 - 01/21/2019

**Collected:**

### Test Report: Asbestos Analysis of Bulk Materials via EPA 600/R-93/116 Method using Polarized Light Microscopy. Quantitation using 400 Point Count Procedure

Sample	Description	Appearance	Non-Asbestos		Asbestos
			% Fibrous	% Non-Fibrous	% Type
4A 551900411-0009	Room 117 - 6" Red Ceramic Floor Tile - Mortar Bed (Grey)	Gray Non-Fibrous Homogeneous		100.0% Non-fibrous (Other)	<0.25% Chrysotile
4B 551900411-0010	Room 129 - 6" Red Ceramic Floor Tile - Mortar Bed (Grey)	Gray Non-Fibrous Homogeneous		100.0% Non-fibrous (Other)	<0.25% Chrysotile
4C 551900411-0011	Room 222A - 6" Red Ceramic Floor Tile - Mortar Bed (Grey)	Gray Non-Fibrous Homogeneous		100.0% Non-fibrous (Other)	<0.25% Chrysotile

Analyst(s)

Khaledeh Tahmasbipoor

(1)

Kira Ramphal (2)

Matthew Davis or other approved signatory

Disclaimer: Some samples may contain asbestos fibers present in dimensions below PLM resolution limits. The limit of detection as stated in the method is 0.25%. EMSL Analytical Inc suggests that samples reported as <0.25% or none detected undergo additional analysis via TEM. The above test report relates only to the items tested. This report may not be reproduced, except in full, without written approval of EMSL Analytical Inc. This test report must not be used by the client to claim product endorsement by NVLAP or any agency of the United States Government. EMSL Analytical Inc., bears no responsibility for sample collection activities, analytical method limitations, or the accuracy of results when requested to separate layered samples. EMSL Analytical Inc., liability is limited to the cost of sample analysis. The test results contained within this report meet the requirements of NELAC unless otherwise noted. Samples received in good condition unless otherwise noted. Unless requested by the client, building materials manufactured with multiple layers (i.e. linoleum, wallboard, etc.) are reported as a single sample.

Samples analyzed by EMSL Canada Inc. Mississauga, ON NVLAP Lab Code 200877-0

Initial report from: 01/21/2019 08:12:43



# EMSL Canada Inc.

2756 Slough Street Mississauga, ON L9T 5N4  
 Phone/Fax: 289-997-4602 / (289) 997-4607  
<http://www.EMSL.com> / [torontolab@emsl.com](mailto:torontolab@emsl.com)

EMSL Canada Order 551701350  
 Customer ID: 55DCSL97  
 Customer PO: 702148-043  
 Project ID:

**Attn:** Dwayne Kellyman  
 ARCADIS Canada Inc.  
 121 Granton Drive  
 Unit 12  
 Richmond Hill, ON L4B 3N4  
**Proj:** Etienne Brule /702148-043

**Phone:** (905) 882-5984  
**Fax:** (905) 882-8962  
**Collected:**  
**Received:** 2/06/2017  
**Analyzed:** 2/13/2017

## Test Report: Asbestos Analysis of Bulk Materials for Ontario Regulation 278/05 via EPA600/R-93/116 Method

**Client Sample ID:** 1A **Lab Sample ID:** 551701350-0001

**Sample Description:** Room 142A /Partition wall cover - brown in colour

TEST	Analyzed Date	Color	Non-Asbestos		Asbestos	Comment
			Fibrous	Non-Fibrous		
PLM	2/13/2017	Brown/Tan	45%	55%	None Detected	

**Client Sample ID:** 1B **Lab Sample ID:** 551701350-0002

**Sample Description:** Room142B/Partition wall cover - brown in colour

TEST	Analyzed Date	Color	Non-Asbestos		Asbestos	Comment
			Fibrous	Non-Fibrous		
PLM	2/13/2017	Brown/Tan	45%	55%	None Detected	

**Client Sample ID:** 1C **Lab Sample ID:** 551701350-0003

**Sample Description:** Room 142A/Partition wall cover - brown in colour

TEST	Analyzed Date	Color	Non-Asbestos		Asbestos	Comment
			Fibrous	Non-Fibrous		
PLM	2/13/2017	Gray/White	30%	70%	None Detected	

**Client Sample ID:** 2A **Lab Sample ID:** 551701350-0004

**Sample Description:** Room 105/Interior window caulking

TEST	Analyzed Date	Color	Non-Asbestos		Asbestos	Comment
			Fibrous	Non-Fibrous		
PLM Grav. Reduction	2/13/2017	Black	0.0%	100%	None Detected	
TEM Grav. Reduction	2/13/2017	Black	0.0%	100%	None Detected	

**Client Sample ID:** 2B **Lab Sample ID:** 551701350-0005

**Sample Description:** Room 107/Interior window caulking

TEST	Analyzed Date	Color	Non-Asbestos		Asbestos	Comment
			Fibrous	Non-Fibrous		
PLM	2/13/2017	Black	0%	100%	None Detected	

**Client Sample ID:** 2C **Lab Sample ID:** 551701350-0006

**Sample Description:** Room 108/Interior window caulking

TEST	Analyzed Date	Color	Non-Asbestos		Asbestos	Comment
			Fibrous	Non-Fibrous		
PLM	2/13/2017	Black	0%	100%	None Detected	

**Client Sample ID:** 3A **Lab Sample ID:** 551701350-0007

**Sample Description:** Exit S12/Exterior door caulking

TEST	Analyzed Date	Color	Non-Asbestos		Asbestos	Comment
			Fibrous	Non-Fibrous		
PLM Grav. Reduction	2/13/2017	Black	0.0%	100%	None Detected	
TEM Grav. Reduction	2/13/2017	Black	0.0%	100%	None Detected	Bag is empty. Sample is taken from 3B.



# EMSL Canada Inc.

2756 Slough Street Mississauga, ON L9T 5N4  
Phone/Fax: 289-997-4602 / (289) 997-4607  
<http://www.EMSL.com> / [torontolab@emsl.com](mailto:torontolab@emsl.com)

EMSL Canada Order 551701350  
Customer ID: 55DCSL97  
Customer PO: 702148-043  
Project ID:

## Test Report: Asbestos Analysis of Bulk Materials for Ontario Regulation 278/05 via EPA600/R-93/116 Method

**Client Sample ID:** 3B **Lab Sample ID:** 551701350-0008

**Sample Description:** Exit S10/Exterior door caulking

TEST	Analyzed Date	Color	Non-Asbestos		Asbestos	Comment
			Fibrous	Non-Fibrous		
PLM	2/13/2017	Black	0%	100%	None Detected	

**Client Sample ID:** 3C **Lab Sample ID:** 551701350-0009

**Sample Description:** Exis S02/Exterior door caulking

TEST	Analyzed Date	Color	Non-Asbestos		Asbestos	Comment
			Fibrous	Non-Fibrous		
PLM	2/13/2017	Black	0%	100%	None Detected	

**Client Sample ID:** 4A **Lab Sample ID:** 551701350-0010

**Sample Description:** Room 110/Exterior window caulking

TEST	Analyzed Date	Color	Non-Asbestos		Asbestos	Comment
			Fibrous	Non-Fibrous		
PLM Grav. Reduction	2/13/2017	Black	0.0%	100%	None Detected	
TEM Grav. Reduction	2/13/2017	Black	0.0%	100%	None Detected	Bag is empty. Sample is taken from 4C.

**Client Sample ID:** 4B **Lab Sample ID:** 551701350-0011

**Sample Description:** Room 111/Exterior window caulking

TEST	Analyzed Date	Color	Non-Asbestos		Asbestos	Comment
			Fibrous	Non-Fibrous		
PLM	2/13/2017	Black	0%	100%	None Detected	

**Client Sample ID:** 4C **Lab Sample ID:** 551701350-0012

**Sample Description:** Room 112/Exterior window caulking

TEST	Analyzed Date	Color	Non-Asbestos		Asbestos	Comment
			Fibrous	Non-Fibrous		
PLM	2/13/2017	Black	0%	100%	None Detected	

### Analyst(s):

Jon Delos Santos PLM (1)  
TEM Grav. Reduction (3)  
Romeo Samson PLM (8)  
Ronald Ng PLM Grav. Reduction (3)

### Reviewed and approved by:

Matthew Davis  
or Other Approved Signatory

None Detected = <0.1%. EMSL maintains liability limited to cost of analysis. This report relates only to the samples reported above and may not be reproduced, except in full, without written approval by EMSL. EMSL bears no responsibility for sample collection activities or analytical method limitations. Interpretation and use of test results are the responsibility of the client. Samples received in good condition unless otherwise noted. This report must not be used to claim product endorsement by NVLAP of any agency of the U.S. Government.

Samples analyzed by EMSL Canada Inc. Mississauga, ON NVLAP Lab Code 200877-0

(Initial report from: 02/13/2017 20:22:18)



# EMSL Canada Inc.

2756 Slough Street Mississauga, ON L4T 1G3  
Phone/Fax: 289-997-4602 / (289) 997-4607  
<http://www.EMSL.com> / [torontolab@emsl.com](mailto:torontolab@emsl.com)

EMSL Canada Order 551502895  
Customer ID: 55DCSL97  
Customer PO: 702148-006  
Project ID:

**Attn:** Jean Daigle  
ARCADIS SENES Canada Inc.  
121 Granton Drive  
Unit 11  
Richmond Hill, ON L4B 3N4  
**Proj:** ETIENNE BRULE/702148-006

**Phone:** (905) 882-5984  
**Fax:** (905) 882-8962  
**Collected:**  
**Received:** 3/23/2015  
**Analyzed:** 3/27/2015

## Test Report: Asbestos Analysis of Bulk Materials for Ontario Regulation 278/05 via EPA600/R-93/116 Method

**Client Sample ID:** 1-A **Lab Sample ID:** 551502895-0001

**Sample Description:** ROOM 130 A/INTERIOR DOOR CAULKING- COLOR BLACK

TEST	Analyzed Date	Color	Non-Asbestos		Asbestos	Comment
			Fibrous	Non-Fibrous		
400 PLM PtCt Grav. Red.	3/27/2015	White/Black	0.0%	99.7%	0.3% Chrysotile	
TEM Grav. Reduction	3/27/2015	White/Black	0.0%	99.3%	0.67% Chrysotile	

**Client Sample ID:** 1-B **Lab Sample ID:** 551502895-0002

**Sample Description:** ROOM 130 B/INTERIOR DOOR CAULKING- COLOR BLACK

TEST	Analyzed Date	Color	Non-Asbestos		Asbestos	Comment
			Fibrous	Non-Fibrous		
PLM	3/26/2015					Stop Positive (Not Analyzed)

**Client Sample ID:** 1-C **Lab Sample ID:** 551502895-0003

**Sample Description:** ROOM 132/INTERIOR DOOR CAULKING- COLOR BLACK

TEST	Analyzed Date	Color	Non-Asbestos		Asbestos	Comment
			Fibrous	Non-Fibrous		
PLM	3/26/2015					Stop Positive (Not Analyzed)

**Client Sample ID:** 2-A **Lab Sample ID:** 551502895-0004

**Sample Description:** ROOM 132/YELLOW PAINT ON CONCRETE BLOCK (COATED)

TEST	Analyzed Date	Color	Non-Asbestos		Asbestos	Comment
			Fibrous	Non-Fibrous		
PLM Grav. Reduction	3/26/2015	White	0.0%	100%	None Detected	

**Client Sample ID:** 2-B **Lab Sample ID:** 551502895-0005

**Sample Description:** ROOM 134/YELLOW PAINT ON CONCRETE BLOCK (COATED)

TEST	Analyzed Date	Color	Non-Asbestos		Asbestos	Comment
			Fibrous	Non-Fibrous		
PLM Grav. Reduction	3/26/2015	White	0.0%	100%	None Detected	

**Client Sample ID:** 2-C **Lab Sample ID:** 551502895-0006

**Sample Description:** ROOM 130 A/YELLOW PAINT ON CONCRETE BLOCK (COATED)

TEST	Analyzed Date	Color	Non-Asbestos		Asbestos	Comment
			Fibrous	Non-Fibrous		
PLM Grav. Reduction	3/27/2015	White	0.0%	100%	None Detected	

**Client Sample ID:** 3-A **Lab Sample ID:** 551502895-0007

**Sample Description:** ROOM 134/CONCRETE BLOCK MORTAR

TEST	Analyzed Date	Color	Non-Asbestos		Asbestos	Comment
			Fibrous	Non-Fibrous		
PLM Grav. Reduction	3/26/2015	Gray/White	0.0%	100%	None Detected	
TEM Grav. Reduction	3/27/2015	Gray/White	0.0%	100%	None Detected	





# EMSL Canada Inc.

2756 Slough Street Mississauga, ON L4T 1G3  
Phone/Fax: 289-997-4602 / (289) 997-4607  
<http://www.EMSL.com> / [torontolab@emsl.com](mailto:torontolab@emsl.com)

EMSL Canada Order 551502895  
Customer ID: 55DCSL97  
Customer PO: 702148-006  
Project ID:

## Test Report: Asbestos Analysis of Bulk Materials for Ontario Regulation 278/05 via EPA600/R-93/116 Method

**Client Sample ID:** 3-B **Lab Sample ID:** 551502895-0008

**Sample Description:** ROOM 132/CONCRETE BLOCK MORTAR

TEST	Analyzed Date	Color	Non-Asbestos		Asbestos	Comment
			Fibrous	Non-Fibrous		
PLM	3/26/2015	Gray	0%	100%	None Detected	

**Client Sample ID:** 3-C **Lab Sample ID:** 551502895-0009

**Sample Description:** ROOM 116 C/CONCRETE BLOCK MORTAR

TEST	Analyzed Date	Color	Non-Asbestos		Asbestos	Comment
			Fibrous	Non-Fibrous		
400 PLM Pt Ct	3/27/2015	Gray	0%	100%	<0.25% Chrysotile	

**Client Sample ID:** 4-A **Lab Sample ID:** 551502895-0010

**Sample Description:** ROOM 123 M/PARTITION WALL FABRIC

TEST	Analyzed Date	Color	Non-Asbestos		Asbestos	Comment
			Fibrous	Non-Fibrous		
PLM	3/26/2015	Orange	30%	70%	None Detected	

**Client Sample ID:** 4-B **Lab Sample ID:** 551502895-0011

**Sample Description:** ROOM 123 M/PARTITION WALL FABRIC

TEST	Analyzed Date	Color	Non-Asbestos		Asbestos	Comment
			Fibrous	Non-Fibrous		
PLM	3/26/2015	Orange	30%	70%	None Detected	

**Client Sample ID:** 4-C **Lab Sample ID:** 551502895-0012

**Sample Description:** ROOM 123 M/PARTITION WALL FABRIC

TEST	Analyzed Date	Color	Non-Asbestos		Asbestos	Comment
			Fibrous	Non-Fibrous		
PLM	3/27/2015	Orange	30%	70%	None Detected	



## EMSL Canada Inc.

2756 Slough Street Mississauga, ON L4T 1G3  
Phone/Fax: 289-997-4602 / (289) 997-4607  
<http://www.EMSL.com> / [torontolab@emsl.com](mailto:torontolab@emsl.com)

EMSL Canada Order 551502895  
Customer ID: 55DCSL97  
Customer PO: 702148-006  
Project ID:

### Test Report: Asbestos Analysis of Bulk Materials for Ontario Regulation 278/05 via EPA600/R-93/116 Method

---

#### Analyst(s):

---

John Biesiadecki	PLM (3)
Nicole Dimou	400 PLM PtCt Grav. Red (1) PLM Grav. Reduction (3)
Nicole Yeo	PLM (1) 400 PLM Pt Ct (1) PLM Grav. Reduction (1) TEM Grav. Reduction (2)

#### Reviewed and approved by:

Matthew Davis  
or Other Approved Signatory

None Detected = <0.5%. EMSL maintains liability limited to cost of analysis. This report relates only to the samples reported above and may not be reproduced, except in full, without written approval by EMSL. EMSL bears no responsibility for sample collection activities or analytical method limitations. Interpretation and use of test results are the responsibility of the client. Samples received in good condition unless otherwise noted. This report must not be used to claim product endorsement by NVLAP of any agency of the U.S. Government.

Samples analyzed by EMSL Canada Inc. Mississauga, ON NVLAP Lab Code 200877-0

Initial report from: 03/27/2015 15:46:48



# EMSL Canada Inc.

2756 Slough Street Mississauga, ON L4T 1G3  
Phone/Fax: 289-997-4602 / (289) 997-4607  
<http://www.EMSL.com> / [torontolab@emsl.com](mailto:torontolab@emsl.com)

EMSL Canada Order 551500845  
Customer ID: 55DCSL97  
Customer PO: 702418-006  
Project ID:

**Attn:** Jean Daigle  
ARCADIS SENES Canada Inc.  
121 Granton Drive  
Unit 11  
Richmond Hill, ON L4B 3N4

**Phone:** (905) 882-5984  
**Fax:** (905) 882-8962  
**Collected:** 1/26/2015  
**Received:** 1/26/2015  
**Analyzed:** 1/28/2015

**Proj:** 702418-006/BRULE

## Test Report: Asbestos Analysis of Bulk Materials for Ontario Regulation 278/05 via EPA600/R-93/116 Method

**Client Sample ID:** 1-A

**Lab Sample ID:** 551500845-0001

**Sample Description:** ROOM 116C-FLOOR TILE MASTIC-BLACK

TEST	Analyzed Date	Color	Non-Asbestos		Asbestos	Comment
			Fibrous	Non-Fibrous		
PLM Grav. Reduction	1/27/2015	Black	0.0%	99.6%	0.36% Chrysotile	
TEM Grav. Reduction	1/28/2015	Black	0.0%	99.3%	0.72% Chrysotile	

**Client Sample ID:** 1-B

**Lab Sample ID:** 551500845-0002

**Sample Description:** ROOM 116C-FLOOR TILE MASTIC-BLACK

TEST	Analyzed Date	Color	Non-Asbestos		Asbestos	Comment
			Fibrous	Non-Fibrous		
PLM	1/28/2015				Stop Positive (Not Analyzed)	

**Client Sample ID:** 1-C

**Lab Sample ID:** 551500845-0003

**Sample Description:** ROOM 116C-FLOOR TILE MASTIC-BLACK

TEST	Analyzed Date	Color	Non-Asbestos		Asbestos	Comment
			Fibrous	Non-Fibrous		
PLM	1/28/2015				Stop Positive (Not Analyzed)	

### Analyst(s):

Jon Delos Santos PLM Grav. Reduction (1)  
Matthew Davis TEM Grav. Reduction (1)

### Reviewed and approved by:

Matthew Davis  
or Other Approved Signatory

None Detected = <0.5%. EMSL maintains liability limited to cost of analysis. This report relates only to the samples reported above and may not be reproduced, except in full, without written approval by EMSL. EMSL bears no responsibility for sample collection activities or analytical method limitations. Interpretation and use of test results are the responsibility of the client. Samples received in good condition unless otherwise noted. This report must not be used to claim product endorsement by NVLAP of any agency of the U.S. Government.

Samples analyzed by EMSL Canada Inc. Mississauga, ON NVLAP Lab Code 200877-0

(Initial report from: 01/28/2015 18:01:17)



# EMSL Canada Inc.

2756 Slough Street Mississauga, ON L4T 1G3  
Phone/Fax: 289-997-4602 / (289) 997-4607  
<http://www.EMSL.com> / [torontolab@emsl.com](mailto:torontolab@emsl.com)

EMSL Canada Order 551500847  
Customer ID: 55DCSL97  
Customer PO: 702148-006  
Project ID:

**Attn:** Jean Daigle  
ARCADIS SENES Canada Inc.  
121 Granton Drive  
Unit 11  
Richmond Hill, ON L4B 3N4

**Phone:** (905) 882-5984  
**Fax:** (905) 882-8962  
**Collected:**  
**Received:** 1/26/2015  
**Analyzed:** 2/02/2015

**Proj:** 702148-006/BRULE

## Test Report: Asbestos Analysis of Bulk Materials for Ontario Regulation 278/05 via EPA600/R-93/116 Method

**Client Sample ID:** 2-A **Lab Sample ID:** 551500847-0001

**Sample Description:** ROOM 116C-MASTIC ON VINYL BASEBOARD-BROWN

TEST	Analyzed Date	Color	Non-Asbestos		Asbestos	Comment
			Fibrous	Non-Fibrous		
PLM Grav. Reduction	1/31/2015	Brown	0.0%	100%	None Detected	
TEM Grav. Reduction	2/02/2015	Brown	0.0%	100%	None Detected	

**Client Sample ID:** 2-B **Lab Sample ID:** 551500847-0002

**Sample Description:** ROOM 134-MASTIC ON VINYL BASEBOARD-BROWN

TEST	Analyzed Date	Color	Non-Asbestos		Asbestos	Comment
			Fibrous	Non-Fibrous		
PLM	1/27/2015	Brown	0%	100%	None Detected	

**Client Sample ID:** 2-C **Lab Sample ID:** 551500847-0003

**Sample Description:** ROOM 132-MASTIC ON VINYL BASEBOARD-BROWN

TEST	Analyzed Date	Color	Non-Asbestos		Asbestos	Comment
			Fibrous	Non-Fibrous		
PLM	1/31/2015	Brown	0%	100%	None Detected	

**Client Sample ID:** 3-A **Lab Sample ID:** 551500847-0004

**Sample Description:** ROOM 116C- VINYL BASEBOARD-BLACK

TEST	Analyzed Date	Color	Non-Asbestos		Asbestos	Comment
			Fibrous	Non-Fibrous		
PLM Grav. Reduction	1/31/2015	Black	0.0%	100%	None Detected	
TEM Grav. Reduction	2/02/2015	Black	0.0%	100%	None Detected	

**Client Sample ID:** 3-B **Lab Sample ID:** 551500847-0005

**Sample Description:** ROOM 134- VINYL BASEBOARD-BLACK

TEST	Analyzed Date	Color	Non-Asbestos		Asbestos	Comment
			Fibrous	Non-Fibrous		
PLM	1/27/2015	Black	0%	100%	None Detected	

**Client Sample ID:** 3-C **Lab Sample ID:** 551500847-0006

**Sample Description:** ROOM 132- VINYL BASEBOARD-BLACK

TEST	Analyzed Date	Color	Non-Asbestos		Asbestos	Comment
			Fibrous	Non-Fibrous		
PLM	1/31/2015	Black	0%	100%	None Detected	



# EMSL Canada Inc.

2756 Slough Street Mississauga, ON L4T 1G3  
Phone/Fax: 289-997-4602 / (289) 997-4607  
<http://www.EMSL.com> / [torontolab@emsl.com](mailto:torontolab@emsl.com)

EMSL Canada Order 551500847  
Customer ID: 55DCSL97  
Customer PO: 702148-006  
Project ID:

## Test Report: Asbestos Analysis of Bulk Materials for Ontario Regulation 278/05 via EPA600/R-93/116 Method

Client Sample ID: 4

Lab Sample ID: 551500847-0007

Sample Description: ROOM 134C- MASTIC ON VINYL FLOOR TILE-BLACK

TEST	Analyzed Date	Color	Non-Asbestos		Asbestos	Comment
			Fibrous	Non-Fibrous		
PLM Grav. Reduction	1/31/2015	Black	0.0%	100%	None Detected	
TEM Grav. Reduction	2/02/2015	Black	0.0%	99.3%	0.67% Chrysotile	

### Analyst(s):

John Biesiadecki PLM (2)  
Matthew Davis TEM Grav. Reduction (3)  
Nicole Yeo PLM (2)  
PLM Grav. Reduction (3)

### Reviewed and approved by:

Matthew Davis  
or Other Approved Signatory

None Detected = <0.5%. EMSL maintains liability limited to cost of analysis. This report relates only to the samples reported above and may not be reproduced, except in full, without written approval by EMSL. EMSL bears no responsibility for sample collection activities or analytical method limitations. Interpretation and use of test results are the responsibility of the client. Samples received in good condition unless otherwise noted. This report must not be used to claim product endorsement by NVLAP of any agency of the U.S. Government.

Samples analyzed by EMSL Canada Inc. Mississauga, ON NVLAP Lab Code 200877-0

Initial report from: 02/02/2015 14:29:08

**EMSL Analytical, Inc.**

490 Rowley Road, Depew, NY 14043

Phone: (716) 651-0030 Fax: (716) 651-0394 Email: [buffalolab@emsl.com](mailto:buffalolab@emsl.com)

Attn: **Ada Nguyen**  
**Decommissioning Cons Svcs, Ltd**  
**121 Granton Drive**  
**Unit 11**  
**Richmond Hill, Ontario, CN L4B3N4**

Fax: (905) 882-8962 Phone: (905) 882-5984  
Project: 70302 / Etienne Brule

Customer ID: DCSL97  
Customer PO: 70302  
Received: 06/01/09 9:54 AM  
EMSL Order: 140902198

EMSL Proj:  
Analysis Date: 6/7/2009

**Asbestos Analysis of Non-Friable Organically Bound Materials by TEM via EPA/600/R-93/116 Section 2.5.5.1**

SAMPLE ID	DESCRIPTION	APPEARANCE	% MATRIX MATERIAL	% NON-ASBESTOS FIBERS	ASBESTOS TYPES
11A-VFT 140902198-0036	room 207, 12"x12" green w/heavy green streaks	Green	100.0	None	No Asbestos Detected
12A-VFT 140902198-0037	room 212, 12"x12" white w/green streaks	White	100.0	None	No Asbestos Detected
17A-VFT 140902198-0038	elevator 2, 12"x12" beige w/white & dark beige	Beige	93.8	None	6.2% Chrysotile
20A-VFT 140902198-0039	room 221, pipe insulation, black tar	Black	93.7	None	6.3% Chrysotile
22A-VFT 140902198-0040	room 125, 12"x12" tan w/gray streaks	Tan	100.0	None	No Asbestos Detected
23A-VFT 140902198-0041	room 116, 12"x12" turquoise w/black & white specks	Blue	100.0	None	No Asbestos Detected

Analytical Sensitivity <0.5% Asbestos.

Analyst(s)

Tom Hanes (6)

*Rhonda McGee*

Rhonda McGee, Laboratory Manager  
or other approved signatory

This laboratory is not responsible for % asbestos in total sample when the residue only is submitted for analysis. The above report relates only to the items tested. This report may not be reproduced, except in full, without written approval by EMSL Analytical, Inc. Samples received in good condition unless otherwise noted.  
Samples analyzed by EMSL Analytical, Inc. Depew 490 Rowley Road, Depew NY NYS ELAP 11606

Test Report EPANOB-7.12.0 Printed: 6/12/2009 9:15:15 AM

**THIS IS THE LAST PAGE OF THE REPORT.**



EMSL Analytical, Inc.

490 Rowley Road, Depew, NY 14043

Phone: (716) 651-0030 Fax: (716) 651-0394 Email: [buffalolab@emsl.com](mailto:buffalolab@emsl.com)

Attn: **Ada Nguyen**  
**Decommissioning Cons Svcs, Ltd**  
**121 Granton Drive**  
**Unit 11**  
**Richmond Hill, Ontario, CN L4B3N4**

Customer ID: DCSL97  
Customer PO: 70302  
Received: 06/01/09 9:54 AM  
EMSL Order: 140902198

Fax: (905) 882-8962 Phone: (905) 882-5984  
Project: 70302 / Etienne Brule

EMSL Proj:  
Analysis Date: 6/5/2009

**Polarized Light Microscopy (PLM) - Point Count Performed by EPA 600/R-93/116**  
**Method with Gravimetric Reduction and 400 Point Count**

SAMPLE ID	DESCRIPTION	APPEARANCE	(% Matrix Organic Acid		ASBESTOS % TYPES	NON- ASBESTOS % Fibrous	NON- ASBESTOS % NON-FIBROUS
19A-PL 140902198-0033	room 221, plaster textured	Gray	6.6	42.5	None Detected		50.9 Non-fibrous (other)
19B-PL 140902198-0034	room 221, plaster textured	Gray	10.7	46.6	None Detected		42.6 Non-fibrous (other)
19C-PL 140902198-0035	room 221, plaster textured	Gray	2.3	50.2	None Detected		47.6 Non-fibrous (other)

Analytical Sensitivity <0.5% Asbestos.

Analyst(s)

Tom Hanes (3)

*Rhonda McGee*

Rhonda McGee, Laboratory Manager  
or other approved signatory

Disclaimers: Some samples may contain asbestos fibers present in dimensions below PLM resolution limits. EMSL Analytical Inc. suggests that samples reported as <0.25% or none detected undergo additional analysis via TEM. The above test report relates only to the items tested. This report may not be reproduced, except in full, without written approval by EMSL Analytical Inc. This report must not be used to claim product endorsement by NVLAP or any agency of the United States Government. EMSL Analytical bears no responsibility for sample collection activities, analytical method limitations, or the accuracy of results when requested to separate layer samples. EMSL Analytical Inc. liability is limited to the cost of sample analysis. Samples received in good condition unless otherwise noted.

**EMSL Analytical, Inc.**

490 Rowley Road, Depew, NY 14043

Phone: (716) 651-0030 Fax: (716) 651-0394 Email: [buffalolab@emsl.com](mailto:buffalolab@emsl.com)

Attn: **Ada Nguyen**  
**Decommissioning Cons Svcs, Ltd**  
**121 Granton Drive**  
**Unit 11**  
**Richmond Hill, Ontario, CN L4B3N4**

Customer ID: DCSL97  
Customer PO: 70302  
Received: 06/01/09 9:54 AM  
EMSL Order: 140902198

Fax: (905) 882-8962 Phone: (905) 882-5984  
Project: 70302 / Etienne Brule

EMSL Proj:  
Analysis Date: 6/10/2009

**Asbestos Analysis of Bulk Material via EPA 600/R-93/116. Quantitation using 400 Point Count Procedure.**

Sample	Description	Appearance	Non-Asbestos		Asbestos
			% Fibrous	% Non-Fibrous	% Type
5A-FP 140902198-0001	room 209, fireproofing, gray fibrous	Gray Fibrous Homogeneous	40.00% Cellulose 40.00% Glass	20.00% Non-fibrous (other)	None Detected
5B-FP 140902198-0002	room 203, fireproofing, gray fibrous	Gray Fibrous Homogeneous	30.00% Cellulose 30.00% Glass	40.00% Non-fibrous (other)	None Detected
5C-FP 140902198-0003	room B2, fireproofing, gray fibrous	Gray Fibrous Homogeneous	10.00% Cellulose 60.00% Glass	30.00% Non-fibrous (other)	None Detected
6A-AC 140902198-0004	C202 above ceiling, acoustical spray	Gray Non-Fibrous Homogeneous		100.00% Non-fibrous (other)	None Detected
6B-AC 140902198-0005	C202 above ceiling, acoustical spray	Gray Non-Fibrous Homogeneous		100.00% Non-fibrous (other)	None Detected
6C-AC 140902198-0006	C206 above ceiling, acoustical spray	Gray Non-Fibrous Homogeneous		100.00% Non-fibrous (other)	None Detected
6D-AC 140902198-0007	C111 above ceiling, acoustical spray	Gray Non-Fibrous Homogeneous		100.00% Non-fibrous (other)	None Detected
6E-AC 140902198-0008	rm 123 above ceiling, acoustical spray	Gray Non-Fibrous Homogeneous		100.00% Non-fibrous (other)	None Detected
10A-SCT 140902198-0009	room B2, 2'x4' textured pinhole, code NFPTY on h	Gray Fibrous Homogeneous	60.00% Cellulose 10.00% Glass	30.00% Non-fibrous (other)	None Detected

Analyst(s)

Andrew Maciejewski (7)  
Rachel Giese (21)

Rhonda McGee, Laboratory Manager  
or other approved signatory

Unless otherwise noted, the results in this report have not been blank corrected. Samples received in good condition unless otherwise noted.  
Samples analyzed by EMSL Analytical, Inc. Depew 490 Rowley Road, Depew NY 14043 Lab Code 200066-0, NYS ELAP 11606

Test Report: PLMPTC-7.12.0 Printed: 6/12/2009 9:15:23 AM



**EMSL Analytical, Inc.**

490 Rowley Road, Depew, NY 14043

Phone: (716) 651-0030

Fax: (716) 651-0394

Email: [buffalolab@emsl.com](mailto:buffalolab@emsl.com)

Attn: **Ada Nguyen**  
**Decommissioning Cons Svcs, Ltd**  
**121 Granton Drive**  
**Unit 11**  
**Richmond Hill, Ontario, CN L4B3N4**

Customer ID: DCSL97  
Customer PO: 70302  
Received: 06/01/09 9:54 AM  
EMSL Order: 140902198

Fax: (905) 882-8962 Phone: (905) 882-5984  
Project: 70302 / Etienne Brule

EMSL Proj:  
Analysis Date: 6/10/2009

**Asbestos Analysis of Bulk Material via EPA 600/R-93/116. Quantitation using 400 Point Count Procedure.**

Sample	Description	Appearance	Non-Asbestos		Asbestos
			% Fibrous	% Non-Fibrous	% Type
10B-SCT 140902198-0010	room 215, 2'x4' textured pinhole, code DFTY nn	Gray Fibrous Homogeneous	60.00% Cellulose 10.00% Glass	30.00% Non-fibrous (other)	None Detected
10C-SCT 140902198-0011	room 102D, 2'x4' textured pinhole, code DFTY nn	Tan Fibrous Homogeneous	50.00% Cellulose 20.00% Glass	30.00% Non-fibrous (other)	None Detected
11B-VFT 140902198-0012	room 207, 12"x12" green w/heavy green streaks	Green Non-Fibrous Homogeneous		100.00% Non-fibrous (other)	None Detected
11C-VFT 140902198-0013	room 207, 12"x12" green w/heavy green streaks	Green Non-Fibrous Homogeneous		100.00% Non-fibrous (other)	None Detected
12B-VFT 140902198-0014	room 212, 12"x12" white w/green streaks	White Non-Fibrous Homogeneous		100.00% Non-fibrous (other)	None Detected
12C-VFT 140902198-0015	room 232, 12"x12" white w/green streaks	White Non-Fibrous Homogeneous		100.00% Non-fibrous (other)	None Detected
13A-SCT 140902198-0016	C201, 2'x4' short deep fissure	Gray Fibrous Homogeneous	40.00% Cellulose 30.00% Glass	30.00% Non-fibrous (other)	None Detected
13B-SCT 140902198-0017	C201, 2'x4' short deep fissure	Gray Fibrous Homogeneous	40.00% Cellulose 30.00% Glass	30.00% Non-fibrous (other)	None Detected
13C-SCT 140902198-0018	C201, 2'x4' short deep fissure	Gray Fibrous Homogeneous	30.00% Cellulose 40.00% Glass	30.00% Non-fibrous (other)	None Detected

**Analyst(s)**

Andrew Maciejewski (7)  
Rachel Glese (21)

Rhonda McGee, Laboratory Manager  
or other approved signatory

Unless otherwise noted, the results in this report have not been blank corrected. Samples received in good condition unless otherwise noted.  
Samples analyzed by EMSL Analytical, Inc. Depew 490 Rowley Road, Depew NY 14043 Lab Code 200058-0, NYS ELAP 11608

Test Report PLMPTC-7.12.0 Printed: 6/12/2009 9:15:24 AM

**EMSL Analytical, Inc.**

490 Rowley Road, Depew, NY 14043

Phone: (716) 651-0030 Fax: (716) 651-0364 Email: [buffalolab@emsl.com](mailto:buffalolab@emsl.com)

Attn: **Ada Nguyen**  
**Decommissioning Cons Svcs, Ltd**  
**121 Granton Drive**  
**Unit 11**  
**Richmond Hill, Ontario, CN L4B3N4**

Customer ID: DCSL97  
Customer PO: 70302  
Received: 06/01/09 9:54 AM  
EMSL Order: 140902198

Fax: (905) 882-8962 Phone: (905) 882-5984  
Project: 70302 / Etienne Brule

EMSL Proj:  
Analysis Date: 6/10/2009

**Asbestos Analysis of Bulk Material via EPA 600/R-93/116. Quantitation using 400 Point Count Procedure.**

Sample	Description	Appearance	Non-Asbestos		Asbestos
			% Fibrous	% Non-Fibrous	% Type
15A-KN 140902198-0019	201, kiln (Amaco) interior insulation	White Non-Fibrous Homogeneous		100.00% Non-fibrous (other)	None Detected
15B-KN 140902198-0020	201, kiln (Amaco) interior insulation	White Non-Fibrous Homogeneous		100.00% Non-fibrous (other)	None Detected
15C-KN 140902198-0021	201, kiln (Amaco) interior insulation	White Non-Fibrous Homogeneous		100.00% Non-fibrous (other)	None Detected
16A-KN 140902198-0022	201, kiln, Kiln & Furnaces Ltd interior insulation	Cream Non-Fibrous Homogeneous		100.00% Non-fibrous (other)	None Detected
16B-KN 140902198-0023	201, kiln, Kiln & Furnaces Ltd interior insulation	Cream Non-Fibrous Homogeneous		100.00% Non-fibrous (other)	None Detected
16C-KN 140902198-0024	201, kiln, Kiln & Furnaces Ltd interior insulation	Cream Non-Fibrous Homogeneous		100.00% Non-fibrous (other)	None Detected
17B-VFT 140902198-0025	elevator 2, 12"x12" beige w/white & dark beige str				Stop Positive (Not Analyzed)
17C-VFT 140902198-0026	elevator 2, 12"x12" beige w/white & dark beige str				Stop Positive (Not Analyzed)
20B-PF 140902198-0027	room 221, pipe insulation, black tar				Stop Positive (Not Analyzed)

Analyst(s)

Andrew Maciejewski (7)

Rachel Giese (21)

Rhonda McGee, Laboratory Manager  
or other approved signatory

Unless otherwise noted, the results in this report have not been blank corrected. Samples received in good condition unless otherwise noted.

Samples analyzed by EMSL Analytical, Inc. Depew 490 Rowley Road, Depew NY NVLAP Lab Code 200058-0, NYS ELAP 11608

Test Report PLMPTC-7.12.0 Printed: 6/12/2009 9:15:25 AM

**EMSL Analytical, Inc.**

490 Rowley Road, Depew, NY 14043

Phone: (716) 651-0030

Fax: (716) 651-0394

Email: [buffalolab@emsl.com](mailto:buffalolab@emsl.com)

Attn: **Ada Nguyen**  
**Decommissioning Cons Svcs, Ltd**  
**121 Granton Drive**  
**Unit 11**  
**Richmond Hill, Ontario, CN L4B3N4**

Customer ID: DCSL97  
Customer PO: 70302  
Received: 06/01/09 9:54 AM  
EMSL Order: 140902198

Fax: (905) 882-8962 Phone: (905) 882-5984  
Project: 70302 / Etienne Brule

EMSL Proj:  
Analysis Date: 6/10/2009

**Asbestos Analysis of Bulk Material via EPA 600/R-93/116. Quantitation using 400 Point Count Procedure.**

Sample	Description	Appearance	Non-Asbestos		Asbestos
			% Fibrous	% Non-Fibrous	% Type
20C-PF 140902198-0028	room 221, pipe insulation, black tar				Stop Positive (Not Analyzed)
22B-VFT 140902198-0029	room 125, 12"x12" tan w/gray streaks	Tan Non-Fibrous Homogeneous		100.00% Non-fibrous (other)	None Detected
22C-VFT 140902198-0030	room 125, 12"x12" tan w/gray streaks	Tan Non-Fibrous Homogeneous		100.00% Non-fibrous (other)	None Detected
23B-VFT 140902198-0031	room 116, 12"x12" turquoise w/black & white snacks	Green Non-Fibrous Homogeneous		100.00% Non-fibrous (other)	None Detected
23C-VFT 140902198-0032	room 116, 12"x12" turquoise w/black & white snacks	Green Non-Fibrous Homogeneous		100.00% Non-fibrous (other)	None Detected

Analytical Sensitivity &lt;0.5% Asbestos.

Analyst(s)

Andrew Maciejewski (7)

Rachel Giese (21)

Rhonda McGee, Laboratory Manager  
or other approved signatory

Unless otherwise noted, the results in this report have not been blank corrected. Samples received in good condition unless otherwise noted.

Samples analyzed by EMSL Analytical, Inc. Depew 490 Rowley Road, Depew NY NYLAP Lab Code 200056-0, NYS ELAP 11608

Test Report PLMPTC-7.12.0 Printed: 6/12/2009 9:15:26 AM

**THIS IS THE LAST PAGE OF THE REPORT.**

**EMSL Analytical, Inc.**

490 Rowley Road, Depew, NY 14043

Phone: (716) 651-0030 Fax: (716) 651-0384 Email: [buffalolab@emsl.com](mailto:buffalolab@emsl.com)

Attn: **Ada Nguyen**  
**Decommissioning Cons Svcs, Ltd**  
**121 Granton Drive**  
**Unit 11**  
**Richmond Hill, Ontario, CN L4B3N4**

Customer ID: DCSL97  
Customer PO: 70422  
Received: 04/07/09 9:19 AM  
EMSL Order: 140901349

Fax: (905) 882-8962 Phone: (905) 882-5984  
Project: 70422 / Etienne Brule

EMSL Proj:  
Analysis Date: 4/8/2009  
Report Date: 4/8/2009

**Asbestos Analysis of Non-Friable Organically Bound Materials by TEM via EPA/600/R-93/116 Section 2.5.5.1**

SAMPLE ID	DESCRIPTION	APPEARANCE	% MATRIX MATERIAL	% NON-ASBESTOS FIBERS	ASBESTOS TYPES
1A-VFT-206B 140901349-0014	Room 206B, 12"x12" vinyl floor tile, gray-belge	Belge	76.4	None	23.6% Chrysotile
1A-VFTM-206B 140901349-0015	Room 206B, mastic under vinyl floor tile	Black	97.1	None	2.9% Chrysotile

Analytical Sensitivity <0.5% Asbestos.

Analyst(s)

Lucia Esquillin (2)

*Rhonda McGee*

Rhonda McGee, Laboratory Manager  
or other approved signatory

This laboratory is not responsible for % asbestos in total sample when the residue only is submitted for analysis. The above report relates only to the items tested. This report may not be reproduced, except in full, without written approval by EMSL Analytical, Inc. Samples received in good condition unless otherwise noted.  
Analysis performed by EMSL Buffalo (NVLAP #200056-0), NY ELAP #11608

EPANOB-7.10.4

**THIS IS THE LAST PAGE OF THE REPORT.**

**EMSL Analytical, Inc.**

490 Rowley Road, Depew, NY 14043

Phone: (716) 651-0030 Fax: (716) 851-0394 Email: [buffalolab@emsl.com](mailto:buffalolab@emsl.com)

Attn: **Ada Nguyen**  
**Decommissioning Cons Svcs, Ltd**  
**121 Granton Drive**  
**Unit 11**  
**Richmond Hill, Ontario, CN L4B3N4**

Fax: (905) 882-8962 Phone: (905) 882-5984  
 Project: 70422 / Etienne Brule

Customer ID: DCSL97  
 Customer PO: 70422  
 Received: 04/07/09 9:19 AM  
 EMSL Order: 140901349

EMSL Proj:  
 Analysis Date: 4/7/2009  
 Report Date: 4/8/2009

### Asbestos Analysis of Bulk Material via EPA 600/R-93/116. Quantitation using 400 Point Count Procedure.

Sample	Location	Appearance	Non-Asbestos		Asbestos
			% Fibrous	% Non-Fibrous	% Type
1B-VFT-206B 140901349-0001	Room 206B, 12"x12" vinyl floor tile, grey- haine				Not Analyzed
			Positive stop by TEM		
1C-VFT-206B 140901349-0002	Room 206B, 12"x12" vinyl floor tile, grey- haine				Not Analyzed
			Positive stop by TEM		
1B-VFTM-206B 140901349-0003	Room 206B, mastic under vinyl floor tile				Not Analyzed
			Positive stop by TEM		
1C-VFTM-206B 140901349-0004	Room 206B, mastic under vinyl floor tile				Not Analyzed
			Positive stop by TEM		
2A-CP-209 140901349-0005	Room 209, cement countertop, black	Black Fibrous Homogeneous		71.50% Non-fibrous (other)	28.50% Chrysotile
2B-CP-209 140901349-0006	Room 209, cement countertop, black				Stop Positive (Not Analyzed)
2C-CP-209 140901349-0007	Room 209, cement countertop, black				Stop Positive (Not Analyzed)
3A-SCT-206B 140901349-0008	Room 206B, 2'x4' suspended ceiling tile	Tan Fibrous Homogeneous	40.00% Cellulose 40.00% Glass	20.00% Non-fibrous (other)	None Detected
3B-SCT-206B 140901349-0009	Room 206B, 2'x4' suspended ceiling tile	Tan Fibrous Homogeneous	40.00% Cellulose 40.00% Glass	20.00% Non-fibrous (other)	None Detected

**Analyst(s)**

Andrew Maciejewski (4)

Rachel Glese (1)

*Rhonda McGee*Rhonda McGee, Laboratory Manager  
or other approved signatory

Unless otherwise noted, the results in this report have not been blank corrected. Samples received in good condition unless otherwise noted.

Analysis performed by EMSL Buffalo (NVLAP #200055-0), NY ELAP #11606

PLMPointCount-1

**EMSL Analytical, Inc.**

490 Rowley Road, Depew, NY 14043

Phone: (716) 851-0030 Fax: (716) 851-0394 Email: [buffalolab@emsl.com](mailto:buffalolab@emsl.com)

Attn: **Ada Nguyen**  
**Decommissioning Cons Svcs, Ltd**  
**121 Granton Drive**  
**Unit 11**  
**Richmond Hill, Ontario, CN L4B3N4**

Fax: (905) 882-8962 Phone: (905) 882-5984  
Project: 70422 / Etienne Brule

Customer ID: DCSL97  
Customer PO: 70422  
Received: 04/07/09 9:19 AM  
EMSL Order: 140901349

EMSL Proj:  
Analysis Date: 4/7/2009  
Report Date: 4/8/2009

**Asbestos Analysis of Bulk Material via EPA 600/R-93/116. Quantitation using 400 Point Count Procedure.**

Sample	Location	Appearance	Non-Asbestos		Asbestos
			% Fibrous	% Non-Fibrous	% Type
3C-SCT-206B 140901349-0010	Room 206B, 2'x4' suspended ceiling tile	Tan Fibrous Homogeneous	40.00% Cellulose 40.00% Glass	20.00% Non-fibrous (other)	None Detected
4A-JC-203 140901349-0011	Room 203, drywall joint compound	White Fibrous Homogeneous	5.00% Cellulose	94.25% Non-fibrous (other)	0.75% Chrysotile
4B-JC-206 140901349-0012	Room 206, drywall joint compound				Stop Positive (Not Analyzed)
4C-JC-206 140901349-0013	Room 206, drywall joint compound				Stop Positive (Not Analyzed)

Analytical Sensitivity <0.5% Asbestos.

Analyst(s)

Andrew Maciejewski (4)  
Rachel Giese (1)

*Rhonda McGee*

Rhonda McGee, Laboratory Manager  
or other approved signatory

Unless otherwise noted, the results in this report have not been blank corrected. Samples received in good condition unless otherwise noted.  
Analysis performed by EMSL Buffalo (NVLAP #200058-0), NY ELAP #11606

PLMPointCount-1

THIS IS THE LAST PAGE OF THE REPORT.

# APPENDIX C

Sample List of Suspect Asbestos-Containing Building Materials from  
A Guide to the Regulation Respecting Asbestos on Construction  
Projects and in Buildings and Repair Operations



## APPENDIX C

### SAMPLE LIST OF SUSPECT ASBESTOS-CONTAINING BUILDING MATERIALS

There are an estimated 3,000 products that contain asbestos. In Ontario, asbestos was widely used in sprayed-on material and in pipe and boiler insulation until 1973<sup>(1)</sup>. The use of many other asbestos-containing materials continued until the mid-1980s. Asbestos is still used in the manufacture of a limited number of products, including some floor tiles, cement products, friction materials and textiles. The following list was adapted from the United States Environmental Protection Agency's (EPA) *Sample List of Suspect Asbestos Containing Materials*<sup>(2)</sup>. It is not an all inclusive list but is intended as a general guide to show which types of building materials may contain asbestos.

#### *Possible Asbestos-Containing Materials in Buildings*

- Acoustical Plaster
- Adhesives
- Asphalt Floor Tile
- Base Flashing
- Blown-in (Loose Fill) Insulation
- Boiler Insulation
- Breaching Insulation
- Caulking/Putties
- Ceiling Tiles and Lay-in Panels
- Cement Pipes
- Cement Siding
- Cement Wallboard
- Construction Mastics (floor tile, carpet, ceiling tile, etc.)
- Cooling Towers
- Decorative Plaster
- Ductwork Flexible Fabric Connections
- Electrical Cloth
- Electrical Wiring Insulation
- Elevator Brake Shoes
- Elevator Equipment Panels
- Fire Doors
- Fireproofing Materials
- Flooring Backing
- Heating and Electrical Ducts
- High Temperature Gaskets
- HVAC Duct Insulation
- Joint Compounds
- Pipe Insulation (corrugated air-cell, block, etc.)
- Roofing Felt
- Roofing Shingles
- Spackling Compounds
- Sprayed-on Insulation
- Taping Compounds (thermal)
- Textured Paper Products
- Vinyl Floor Tile
- Vinyl Sheet Flooring
- Vinyl Wall Coverings
- Wallboard

(1) J.S. Dupre, J.F. Mustard & R.J. Uffin, *Report of the Royal Commission on Matters of Health and Safety Arising from the Use of Asbestos in Ontario*, Ontario Ministry of the Attorney General, Toronto, Ontario, 1984, page 12.

(2) U.S. Environmental Protection Agency, <http://www.epa.gov/Region06/6pd/asbestos/asbmatl.htm>.



Arcadis Canada Inc.

121 Granton Drive, Suite 12, Richmond Hill, Ontario L4B 3N4

Tel 905 882 5984

Fax 905 882 8962

[www.arcadis.com](http://www.arcadis.com)

