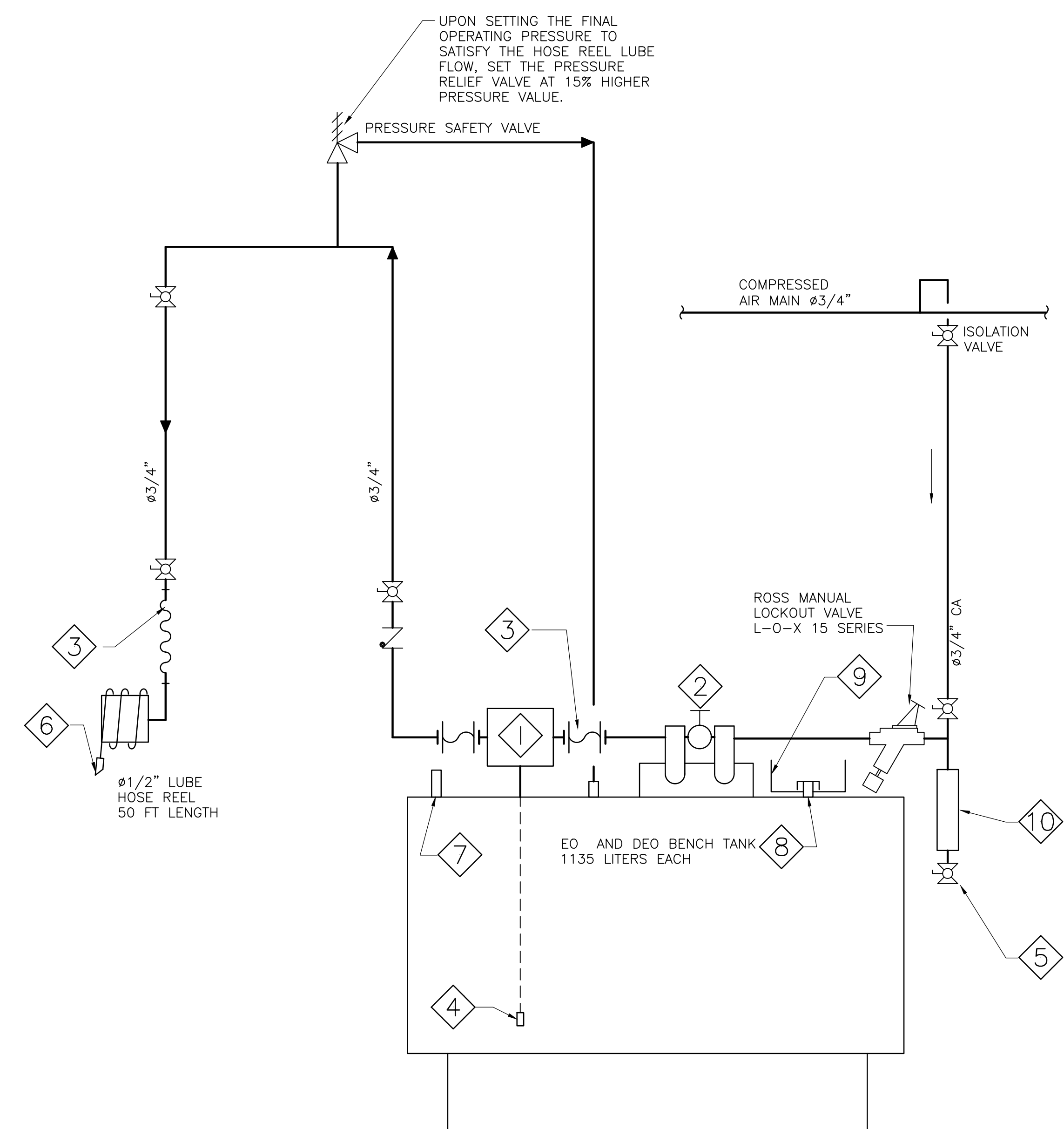
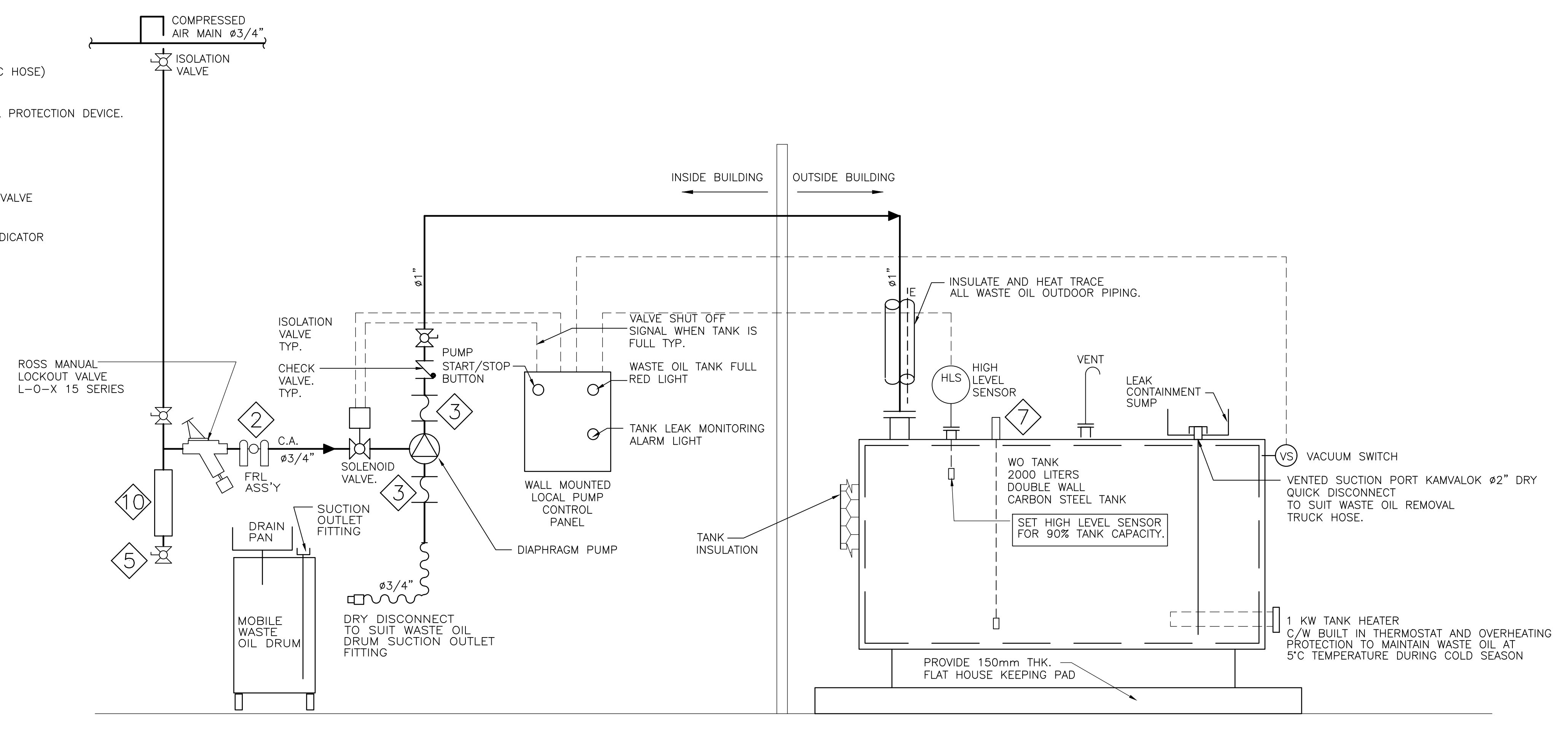


User Name: Magur Cojocariu, Plot Date/Time: Monday, March 18, 2019 11:02:29 AM, Path and File Name: j:\24rx12.0113\_durham\_region\_ero & scugog depot\5.9 drawing\59process\layouts\02-q20-01-01.dwg

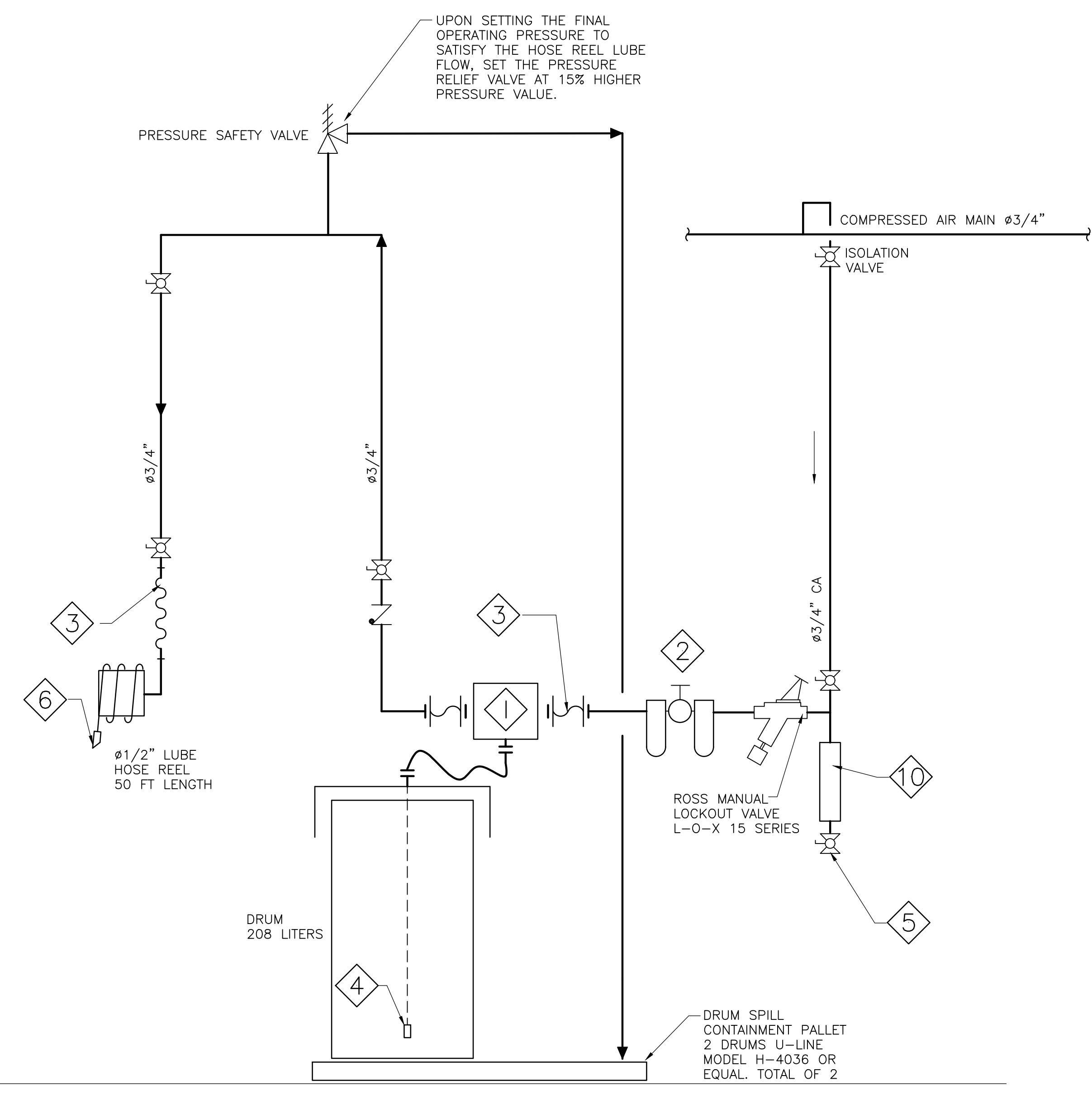


ENGINE OIL AND DIESEL ENGINE OIL (EO AND DEO) SYSTEMS FLOW DIAGRAM  
SCALE NTS

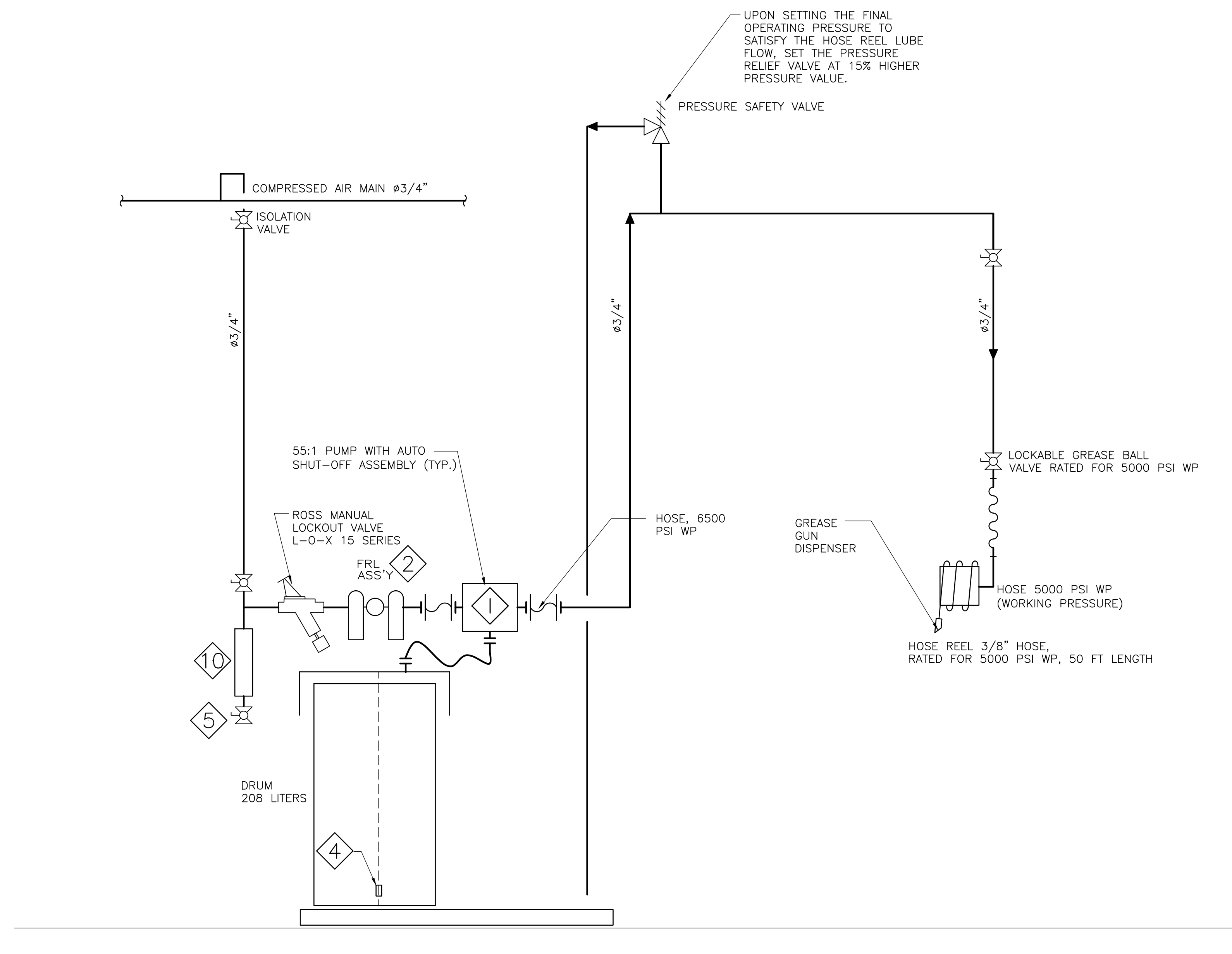
- TYPICAL COMPONENTS DESCRIPTION
- 1 3:1 LUBE COMPRESSED AIR PUMP
  - 2 AIR FILTER/REGULATOR ASSEMBLY
  - 3 FLEXIBLE CONNECTION (HYDRAULIC HOSE)
  - 4 LOW LEVEL CUT-OFF MECHANICAL PROTECTION DEVICE.
  - 5 1/2" DRAIN VALVE.
  - 6 DISPENSING GUN C/W METERING VALVE
  - 7 DIRECT VISUAL READING LEVEL INDICATOR
  - 8 VENTED FILL CAP
  - 9 FILL CONTAINMENT BOX
  - 10 2" DIA. 300 LONG DIRT LEG



WASTE OIL (WO) SYSTEM FLOW DIAGRAM  
SCALE NTS



AUTOMATIC TRANSMISSION FLUID (ATF) GEAR OIL (GO) FLOW DIAGRAM  
SCALE NTS



GREASE (GR) FLOW DIAGRAM  
SCALE NTS

DATE (mm dd yyyy)	ISSUED FOR	REV
01 OCT 2018	TENDER	0

KEY PLAN

CONSULTANTS

IBI GROUP  
100-175 Galaxy Boulevard  
Toronto ON M9W 0C9 Canada  
tel 416 679 1930 fax 416 675 4620  
ibigroup.com

This drawing has been prepared solely for the use of the Regional Municipality of Durham and there are no representations of any kind made by IBI Group to any party with whom IBI Group has not entered into a contract.

North Arrow

Detail Symbol

DETAIL NUMBER  
LOCATION OR DETAIL SHEET

Project Manager  
A. VAN VEEN

Architect/Engineer  
M. COJOCARIU

Project Leader  
M. COJOCARIU

Drawn  
M. COJOCARIU

Date  
JAN 2013

Checked  
S. LIU

Client  
THE REGIONAL MUNICIPALITY OF DURHAM  
WORKS DEPARTMENT ONTARIO

Project  
EXPAND GARAGE  
SCUGOG DEPOT  
10 REGIONAL RD. 21, R.R.#14, PORT PERRY

Drawing Title  
PROCESS FLOW DIAGRAMS

Check Scale (may be photo-reduced)

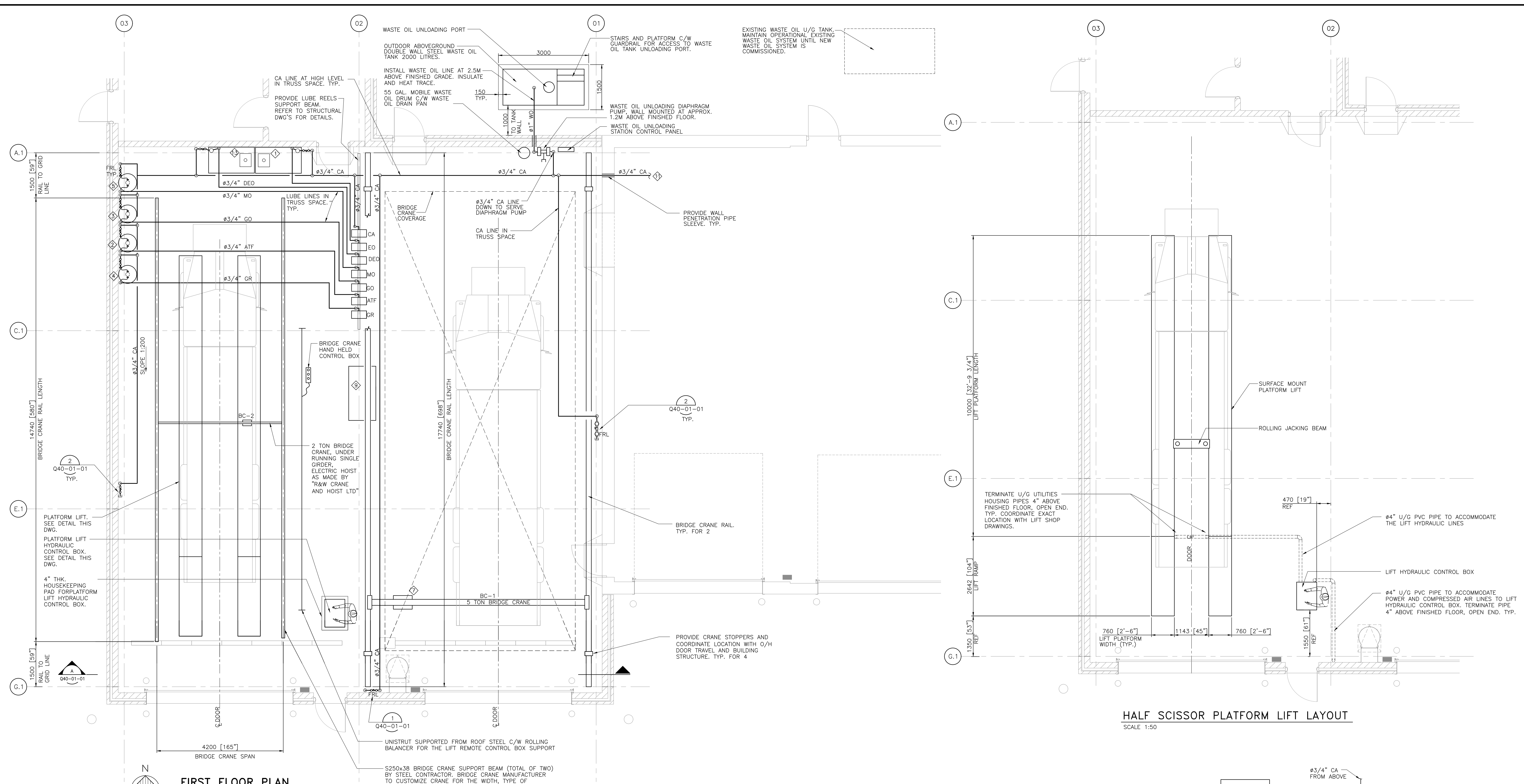
0 1 inch 0 10mm

Project No.  
24RX12.0113

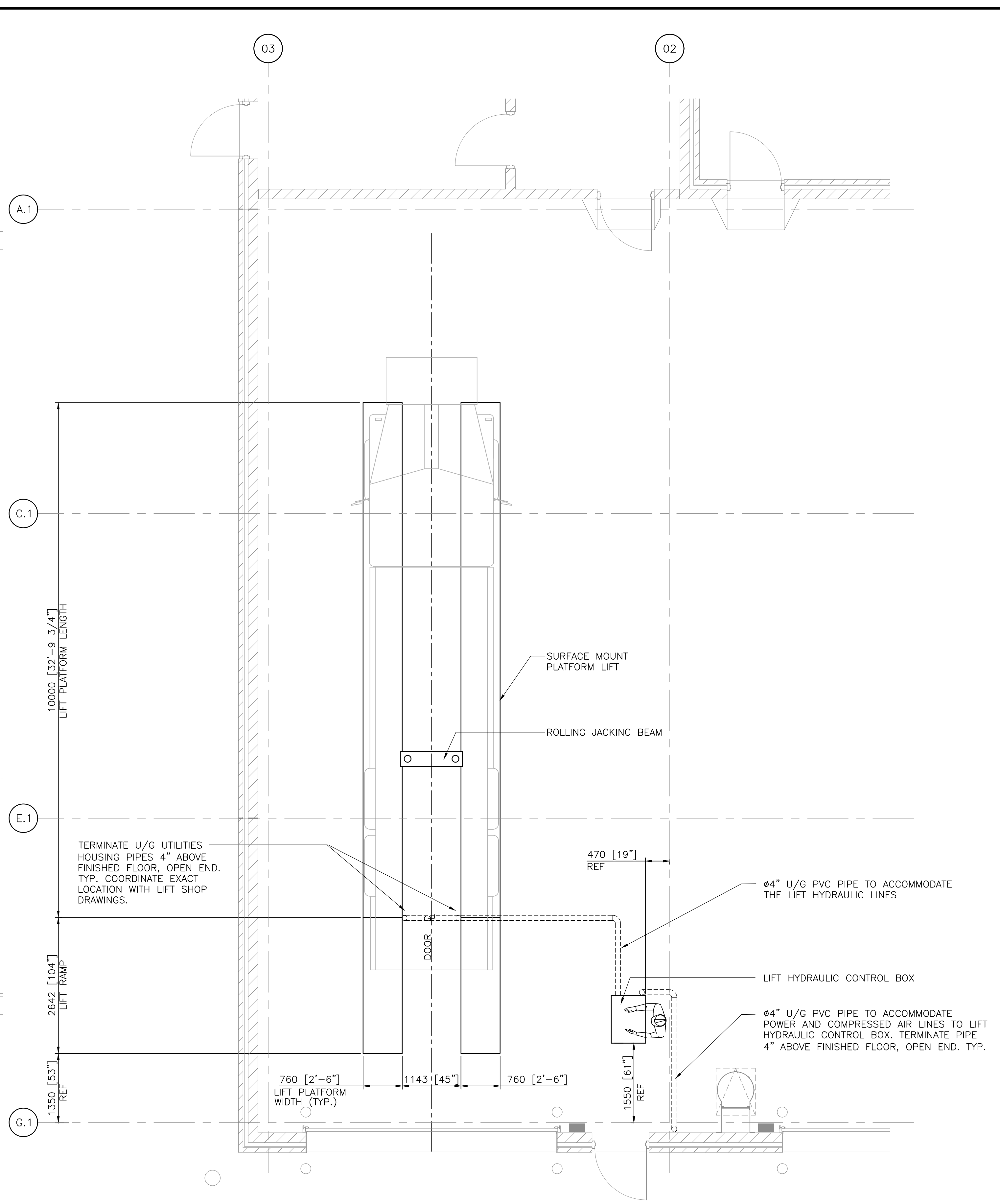
Drawing No.  
02-Q20-01-01

ROD Contract No.  
T-1038-2019

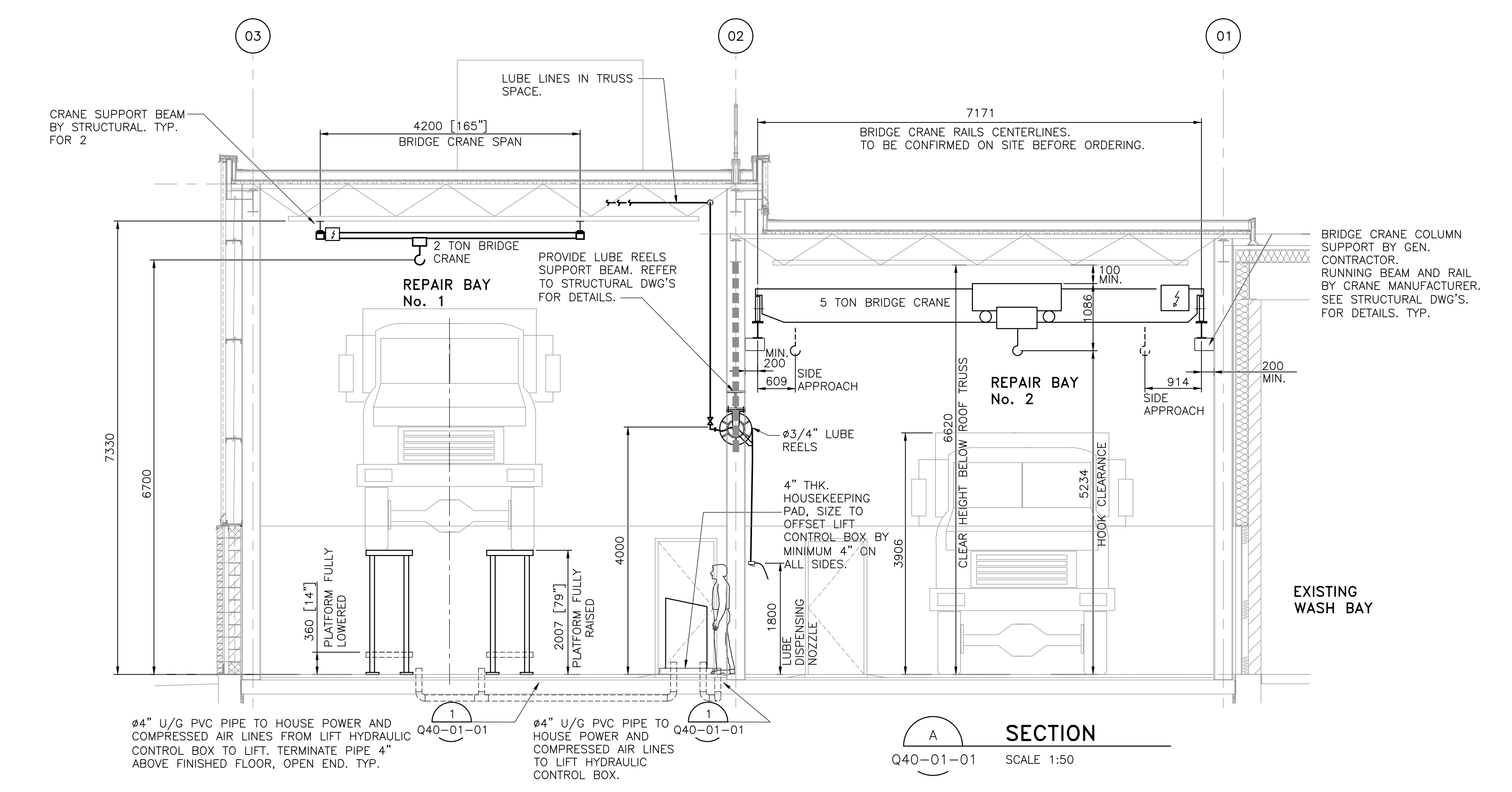
DATE	ISSUED FOR	REV
01 OCT 2018	TENDER	0



**FIRST FLOOR PLAN**  
SCALE 1:50



**HALF SCISSOR PLATFORM LIFT LAYOUT**  
SCALE 1:50

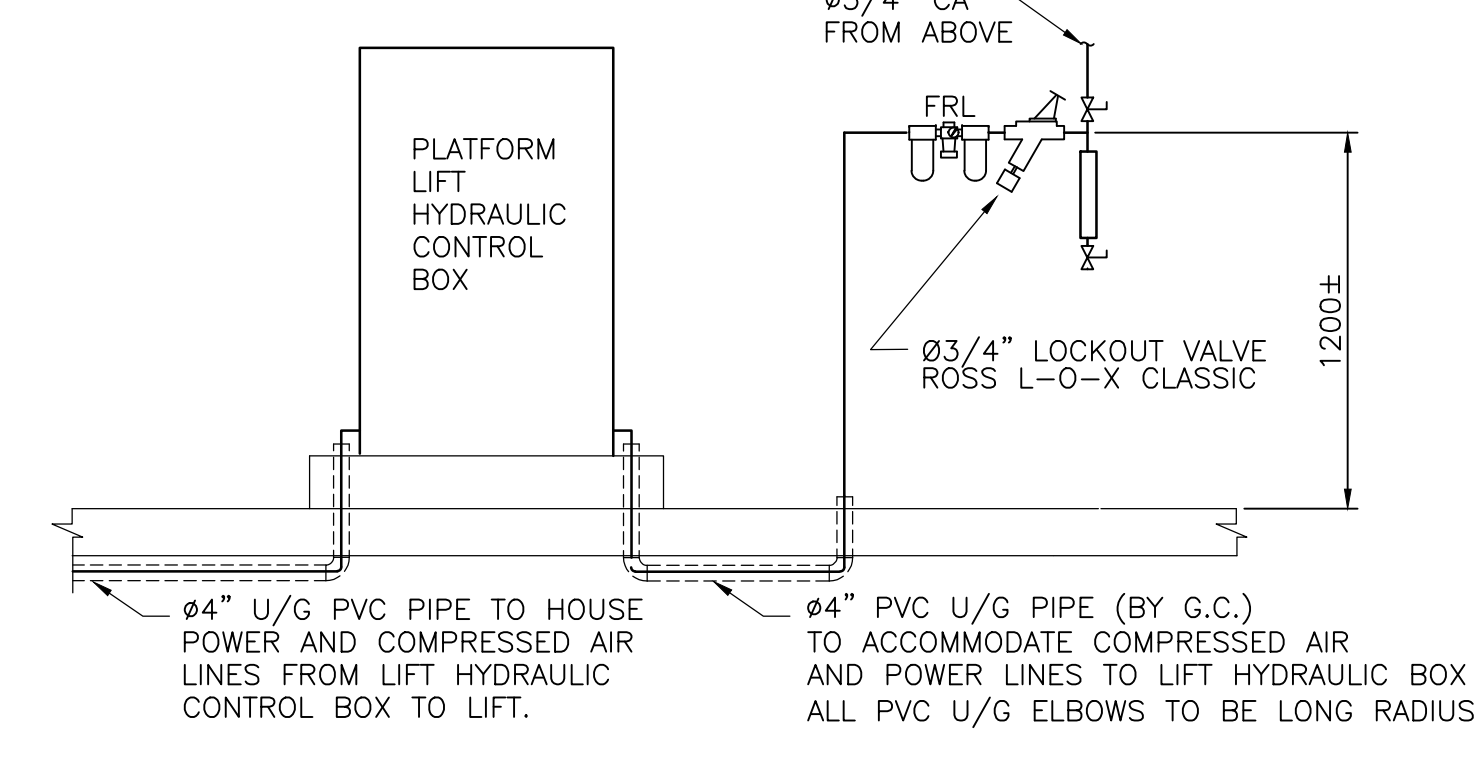


**SECTION**  
SCALE 1:50

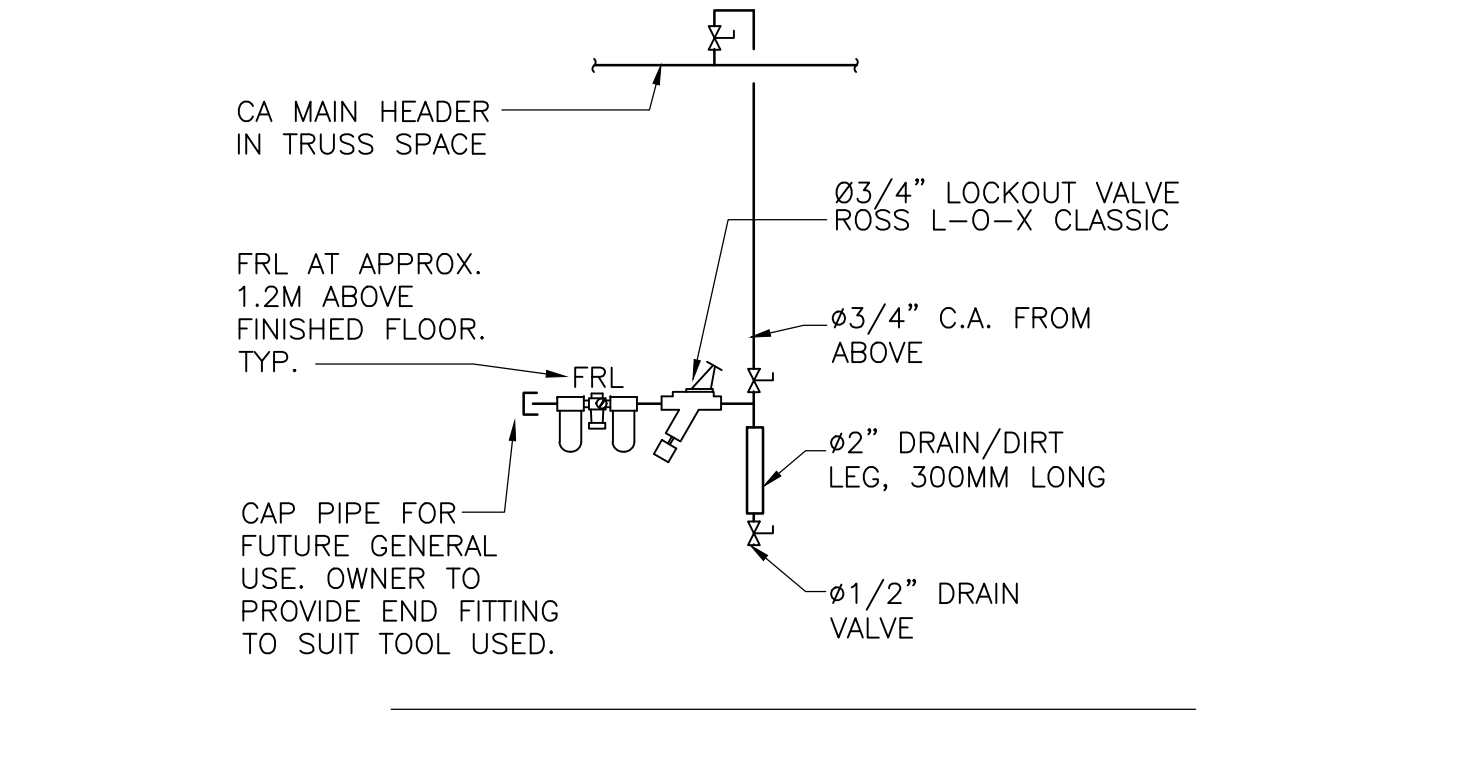
- NOTES:**
- 1. 1135 LITERS "EO" BENCH TANK C/W TANK MOUNTED COMPRESSED AIR ACTUATED DISPLACEMENT PUMP, SAMSON MODEL 1110-PG OR EQUAL.
  - 2. 208 LITERS "ATF" BULK DRUM C/W WALL MOUNTED COMPRESSED AIR ACTUATED DIAPHRAGM PUMP.
  - 3. 208 LITERS "GO" BULK DRUM C/W WALL MOUNTED COMPRESSED AIR ACTUATED DISPLACEMENT PUMP.
  - 4. 208 LITERS "GR" BULK DRUM C/W COMPRESSED AIR ACTUATED DISPLACEMENT PUMP AND HOIST/FOLLOWER KIT.
  - 5. 208 LITERS "MO" BULK DRUM C/W COMPRESSED AIR ACTUATED DISPLACEMENT PUMP AND HOIST/FOLLOWER KIT.
  - 6. RESERVED.
  - 7. 5 TON BRIDGE CRANE, FULLY ELECTRIC, PENDANT CONTROL.
  - 8. #3/4" CA LINE DOWN, CONNECT TO CA HOSE REELS. FIELD ROUT ALONG THE WALL TO SERVE THE LUBE CA ACTUATED PUMPS.
  - 9. 0.9M WIDE X 1.8M LONG MOBILE WORK TABLE, STAINLESS STEEL TOP, ADJUSTABLE LEGS 711MM TO 889MM, 205MM BOTTOM SHELF, ONE DRAWER, HEAVY DUTY VISE, TABLE LEGS C/W LOCKABLE CASTER OR FLOOR LOCK.
  - 10. RESERVED.
  - 11. CONNECT NEW #3/4" CA LINE TO EXISTING CA HEADER AT EXISTING COMPRESSOR.
  - 12. LUBE HOSE REEL, 50 FT HOSE, TYP.
  - 13. 1135 LITERS "DEO" BENCH TANK C/W TANK MOUNTED COMPRESSED AIR ACTUATED DISPLACEMENT PUMP, SAMSON MODEL #1110 PG OR EQUAL.

- GENERAL NOTES:**
1. READ THIS DWG. IN CONJUNCTION WITH APPLICABLE PROCESS FLOW DIAGRAMS.
  2. READ THIS DWG. IN CONJUNCTION WITH APPLICABLE MECHANICAL SPECIFICATIONS AND STANDARD MECHANICAL DETAILS.
  3. THIS DWG. IS NOT A SHOP DWG. COORDINATE INSTALLATION OF ALL PIPING AND EQUIPMENT SHOWN WITH ALL OTHER BUILDING STRUCTURES AND MECHANICAL/ELECTRICAL SYSTEMS PRIOR TO FABRICATION.
  4. NOT ALL VALVES/FITTINGS SHOWN. FOR DETAILS REFER TO APPLICABLE FLOW DIAGRAMS, PROCESS SPECIFICATIONS AND APPLICABLE CODE REQUIREMENTS. PROVIDE ISOLATION VALVES AT ALL TAKE-OFFS AND UPSTREAM OF EQUIPMENT SERVED.
  5. CONTRACTOR IS RESPONSIBLE FOR PROVIDING ALL PROCESS SHOP DWG'S FOR COMPLETE SYSTEMS, FOR TSSA APPROVALS OR FOR ANY OTHER AUTHORITIES HAVING JURISDICTION.
  6. ALL EQUIPMENT SHOWN TO BE PROVIDED BY CONTRACTOR UNLESS OTHERWISE NOTED. ALL REQUIRED SERVICES (I.E. POWER, CONTROLS, CA) AND INSTALLATION OF ALL PROCESS EQUIPMENT TO BE PROVIDED BY CONTRACTOR.
  7. COORDINATE ALL WALL PENETRATIONS WITH STEEL WALL BRACING LOCATIONS.
  8. OBTAIN APPROVAL FOR PLATFORM LIFT SHOP DWG'S PRIOR TO FLOOR FABRICATION AND UNDERGROUND LIFT PIPING INSTALLATION, FOR COORDINATION.

- ABBREVIATIONS:**
- GR - GREASE
  - GO - GEAR OIL
  - ATF - AUTOMATIC TRANSMISSION FLUID
  - EO - ENGINE OIL
  - CA - COMPRESSED AIR
  - MO - MULTI-GRADE OIL
  - DEO - DIESEL ENGINE OIL
  - FRL - FILTER REGULATOR LUBRICATOR STATION
  - WG - WASTE OIL



**PLATFORM LIFT HYDRAULIC CONTROL CONSOLE**  
SCALE 1:25

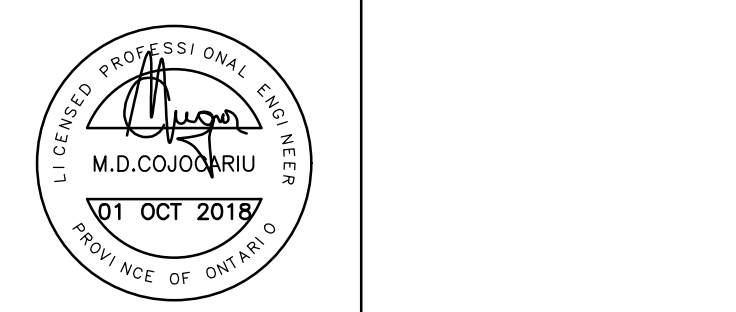


**TYPICAL COMPRESSED AIR STATION**  
SCALE NTS

KEY PLAN
CONSULTANTS

**IBI GROUP**  
100-175 Galaxy Boulevard  
Toronto ON M9W 0C9 Canada  
Tel 416 679 1930 Fax 416 675 4620  
ibigroup.com

This drawing has been prepared solely for the use of the Regional Municipality of Durham and there are no representations of any kind made by IBI Group to any party with whom IBI Group has not entered into a contract.



North Arrow	Detail Symbol
	LOCATION OR DETAIL SHEET

Project Manager A. VAN VEEN	Architect/Engineer M. COJOCARIU
Project Leader M. COJOCARIU	Drawn A. GILROY
Date 21 SEP 2018	Checked S. LIU

THE REGIONAL MUNICIPALITY OF DURHAM  
WORKS DEPARTMENT  
ONTARIO

Project  
**EXPAND GARAGE SCUGOG DEPOT**  
10 REGIONAL RD. 21, R.R.#14, PORT PERRY

Drawing Title  
**REPAIR BAYS PROCESS LAYOUT**

Check Scale (may be photo-reduced)	0 1 inch 0 10mm
Project No.	24RX12.0113
Drawing No.	02-Q40-01-01

ROD Contract No.  
**T-1038-2019**

User Name: Mjgur\_Cojoariu\_Plot\_Data\Time: Monday, March 18, 2019 11:04:33 AM Path and File Name: j:\24rx12.0113\_durham\_region\_ortho & scugog\_depots\5.9\_drawing\59process\layouts\02-q40-01-01.rvt