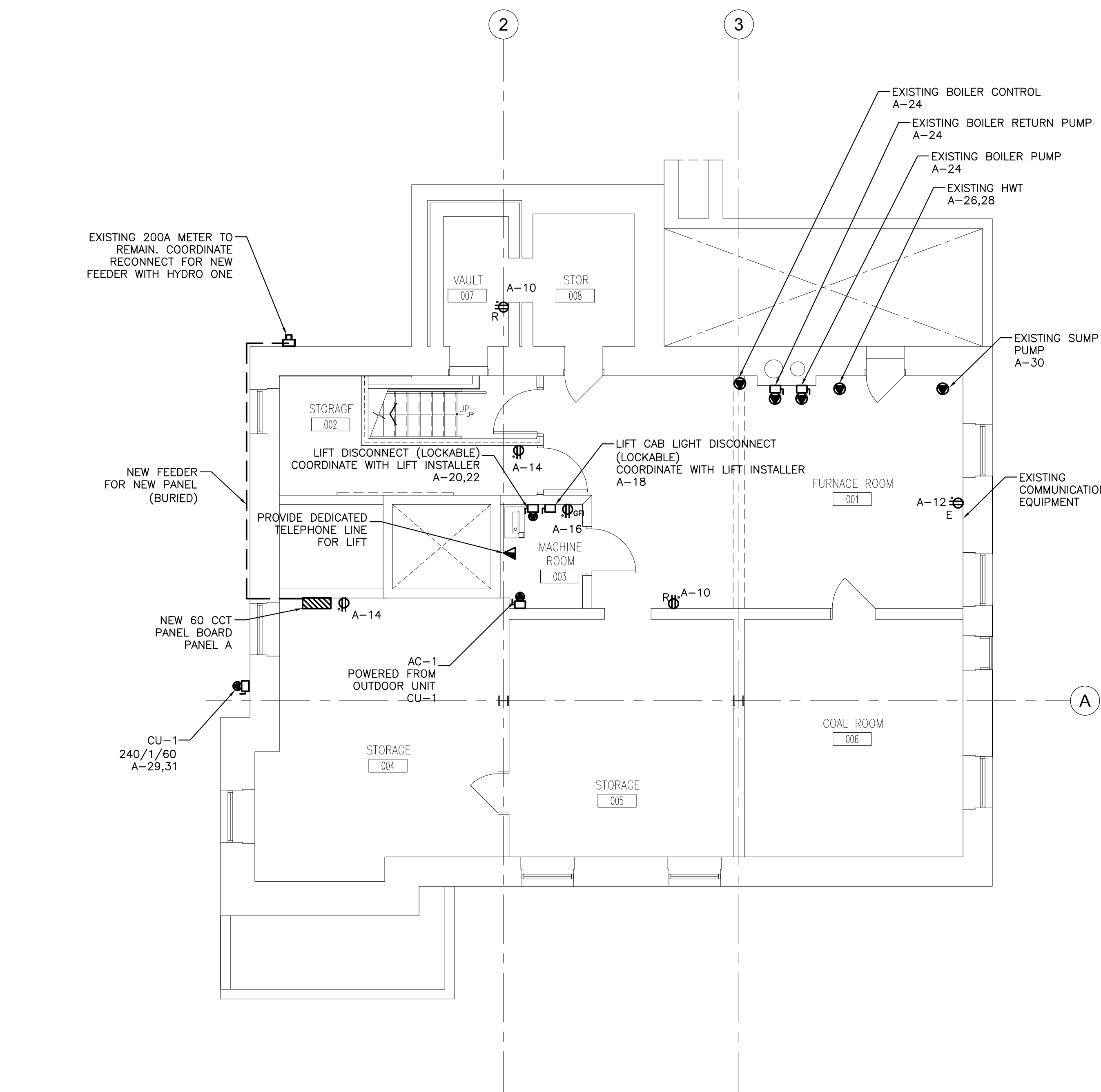


1 POWER — GROUND FLOOR
E1 SCALE: 3/16" = 1'-0"

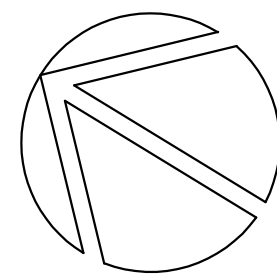


2 POWER — BASEMENT
E1 SCALE: 3/16" = 1'-0"

- NOTES
- EXISTING EXTERIOR WALL MOUNTED RECEPTACLES TO REMAIN. RESUPPLY CIRCUITS ACCORDINGLY.
 - CIRCUIT NUMBERING SHOWN FOR SCOPE PURPOSES. REUSE EXISTING CIRCUITS WHERE SUITABLE. PROVIDE NEW BREAKERS AS REQUIRED.
 - NEW OUTLETS ON EXTERIOR WALLS NEED TO BE SURFACE MOUNTED
- LEGEND
- RECEPTACLE
 - RECEPTACLE MOUNTED ABOVE COUNTER
 - GFI
 - WEATHER PROOF
 - CEILING MOUNTED
 - 20A T-SLOT
 - DIRECTION CONNECTION
 - DISCONNECT
 - PHONE/DATA
 - EXHAUST FAN
 - MECHANICAL SWITCH

NO.	DESCRIPTION	DATE	BY
0	ISSUED FOR TENDER & PERMIT	15/07/22	DRM
REVISIONS			

Kirkland Engineering Ltd BCIN: 28857



NOT TO BE USED FOR CONSTRUCTION UNLESS SIGNED BY THE ENGINEER.

THIS DRAWING IS AN INSTRUMENT OF PROFESSIONAL SERVICE FOR USE EXCLUSIVELY ON THIS PROJECT. RE-USE OF ANY PORTION OF THIS DOCUMENT IS PROHIBITED.

Copyright 2022 Kirkland Engineering Ltd

K

570 Water Street
Peterborough, Ontario
p. (705) 745-2831
f. (705) 741-1526
www.kirklandeng.com

KIRKLAND ENGINEERING LTD.

PROJECT

**ACCESSIBILITY RENOS
FORMER LAKEFIELD POST
OFFICE**

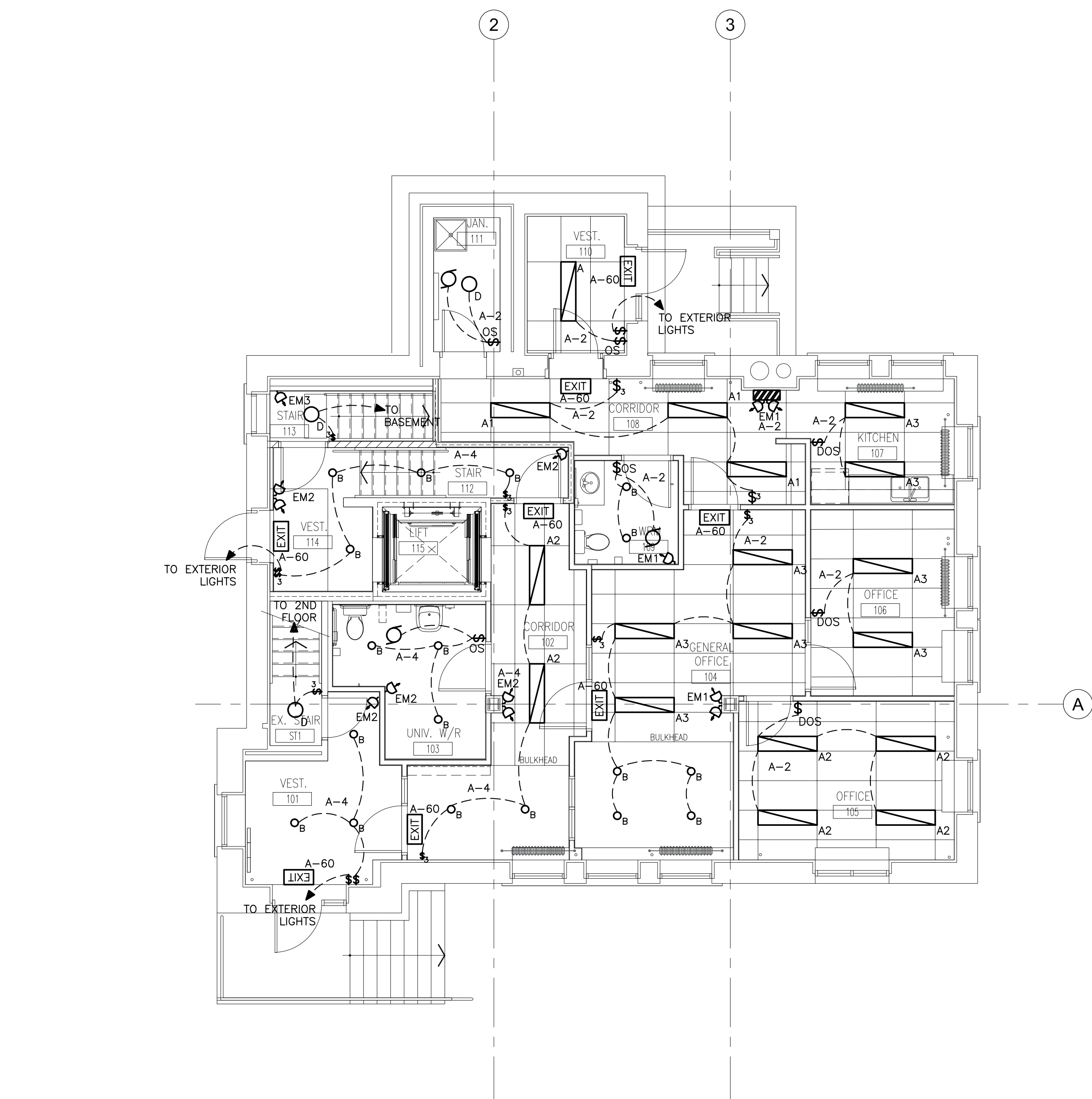
**12 QUEEN STREET
LAKEFIELD, ONTARIO**

TITLE

**GROUND FLOOR AND
BASEMENT POWER**

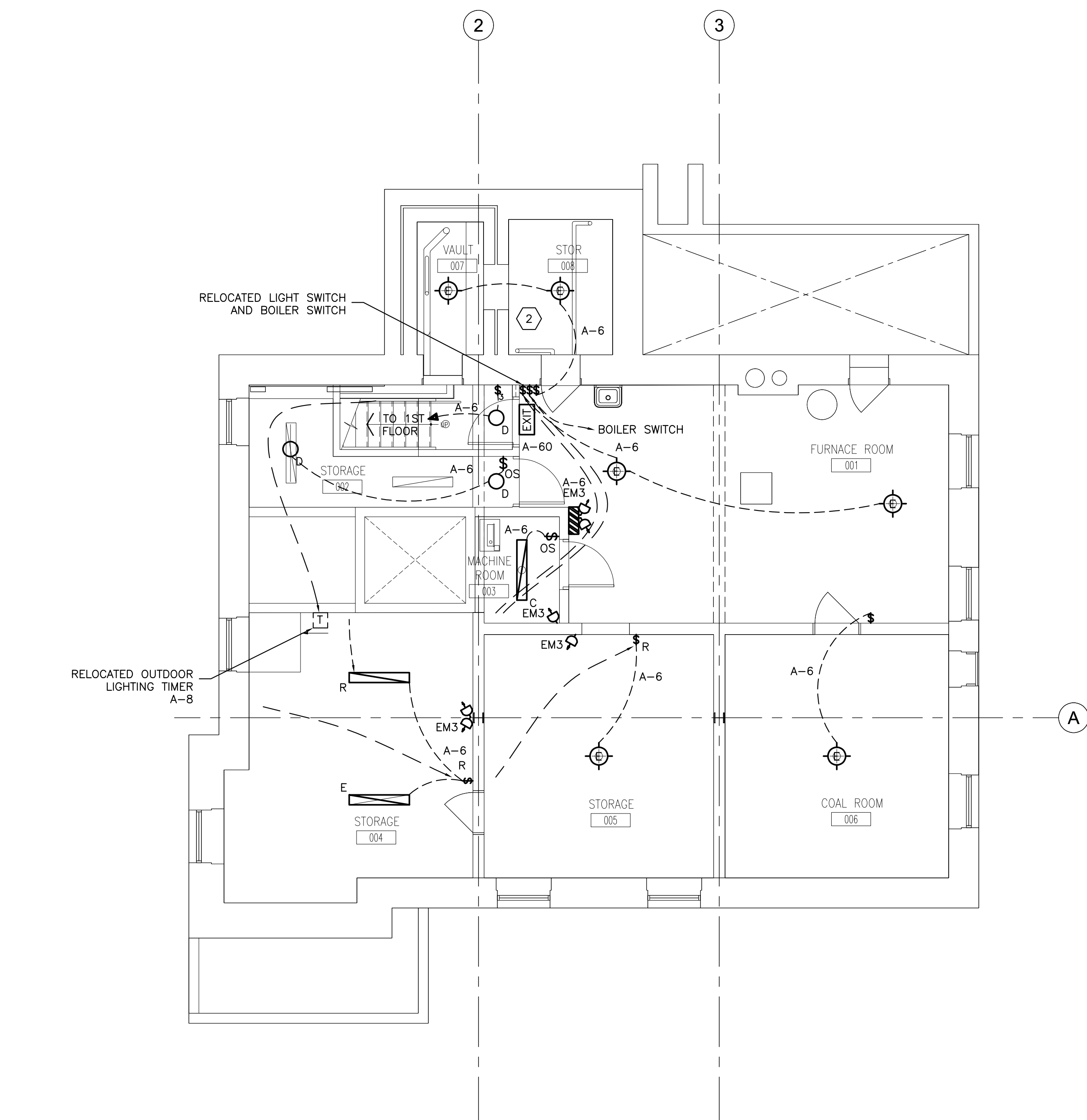
DESIGN	IAB	SCALE AS NOTED
DRAWN	IAB	DWG NO.
CHECKED	DRM	
APPROVED	IAB	
PROJECT	6847	

E1



1 LIGHTING – GROUND FLOOR
E2 SCALE: 3/16" = 1'-0"

INTERIOR LIGHT FIXTURE SCHEDULE				
FIXTURE TYPE	DESCRIPTION	MANUFACTURER	MODEL NO.	
A1	1'x4' TROFFER LED FLAT PANEL FIXTURE, 22W, SET AT 2400 LUMENS, 4000K CCT, 120V, 0-10V DIMMING.	LITHONIA OR EQUAL	PCAML 1X4 AL01 SSW7 M4	
A1	1'x4' TROFFER LED FLAT PANEL FIXTURE, 31W, SET AT 3300 LUMENS, 4000K CCT, 120V, 0-10V DIMMING.	LITHONIA OR EQUAL	PCAML 1X4 AL01 SSW7 M4	
A1	1'x4' TROFFER LED FLAT PANEL FIXTURE, 41W, SET AT 4400 LUMENS, 4000K CCT, 120V, 0-10V DIMMING.	LITHONIA OR EQUAL	PCAML 1X4 AL01 SSW7 M4	
B	8" ROUND LED DOWNLIGHT, RECESSED (NO HOUSING) MOUNTED, 4000K CCT, 20.5W, 1850 LUMEN, 120V, 0-10V DIMMING. WHITE	LITHONIA OR EQUAL	WFB LED 30K40K50K MVOLT 90CRI MW	
C	4' SURFACE MOUNED LED WRAP FIXTURE, 42W, SET AT 2900 LUMENS, 4000K CCT, 120V, 0-10V DIMMING.	LITHONIA OR EQUAL	FMLWL 48 840 ZT MVOLT	
D	11" ROUND LED FLUSH MOUNT FIXTURE, 16W, 1100 LUMENS, 4000K CCT, 120V, 0-10V DIMMING.	LITHONIA OR EQUAL	EMLRL 11 14840 M4	



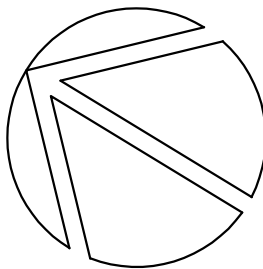
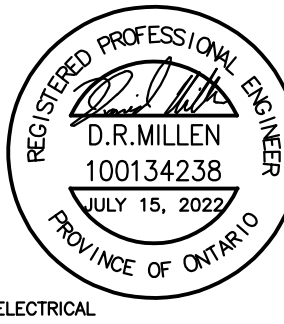
2 LIGHTING – BASEMENT
E2 SCALE: 3/16" = 1'-0"

EMERGENCY LIGHTING & EXIT SCHEDULE			
SYMBOL	DESCRIPTION	MANUFACTURER	MODEL No.
	EMERGENCY LIGHTING UNIT, 100W, 12VDC, 10 YEAR BATTERY, AUTO-TEST FEATURE, C/W 2 X 12V, 4W LED MR16 HEADS AND MOUNTING SHELF. WHITE FINISH.	LUMACELL OR APPROVED EQUAL	RG12S1002LD10AT C/W 440.0616-L
	EMERGENCY LIGHTING UNIT, 100W, 12VDC, 10 YEAR BATTERY, AUTO-TEST FEATURE C/W MOUNTING SHELF. WHITE FINISH.	LUMACELL OR APPROVED EQUAL	RG12S100AT C/W 440.0616-L
	DUAL REMOTE HEAD, 12VDC, 4W, MICRO PAR 18, MR16 LED. WHITE FINISH.	LUMACELL OR APPROVED EQUAL	MQM2-LD10
	SINGLE REMOTE HEAD, 12VDC, 4W, MICRO PAR 18, MR16 LED. WHITE FINISH.	LUMACELL OR APPROVED EQUAL	MQM1-LD10
	SELF POWERED RUNNING MAN EXIT SIGN, SINGLE OR DOUBLE FACE AS INDICATED, ARROWS AS INDICATED, LED LAMPS FOR 120VAC, CSA-C860-96 LISTED & CERTIFIED	LUMACELL OR APPROVED EQUAL	LA SERIES

LEGEND	
	1'x4' LED RECESSED TROFFER (SEE SCHEDULE)
	8" LED DOWNLIGHT
	4' LED SURFACE MOUNTED STRIP FIXTURE, (SEE SCHEDULE)
	11" LED FLUSH MOUNTED LED FIXTURE
	EXISTING FIXTURE
	EMERGENCY BATTERY PACK W 2 HEADS
	EMERGENCY LIGHTS 2 REMOTE HEADS
	EMERGENCY LIGHTS 1 REMOTE HEAD
	SELF POWERED RUNNING MAN EXIT SIGN
	ON/OFF SWITCH
	3 WAY SWITCH
	SWITCH WITH OCCUPANCY SENSOR
	DIMMING SWITCH W/ OCCUPANCY SENSOR
	WEATHERPROOF
	EXHAUST FAN

REVISIONS			
0	ISSUED FOR TENDER & PERMIT	15/07/22	DRM
NO.	DESCRIPTION	DATE	BY

Kirkland Engineering Ltd BCIN: 28857



NOT TO BE USED FOR CONSTRUCTION UNLESS SIGNED BY THE ENGINEER.

THIS DRAWING IS AN INSTRUMENT OF PROFESSIONAL SERVICE FOR USE EXCLUSIVELY ON THIS PROJECT. RE-USE OF ANY PORTION OF THIS DOCUMENT IS PROHIBITED.

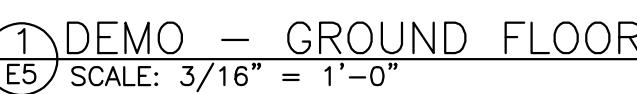
Copyright 2022 Kirkland Engineering Ltd



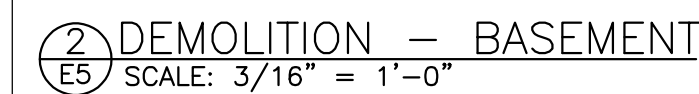
PROJECT
**ACCESSIBILITY RENOS
FORMER LAKEFIELD POST
OFFICE**
12 QUEEN STREET
LAKEFIELD, ONTARIO

TITLE
**GROUND FLOOR AND
BASEMENT LIGHTING**

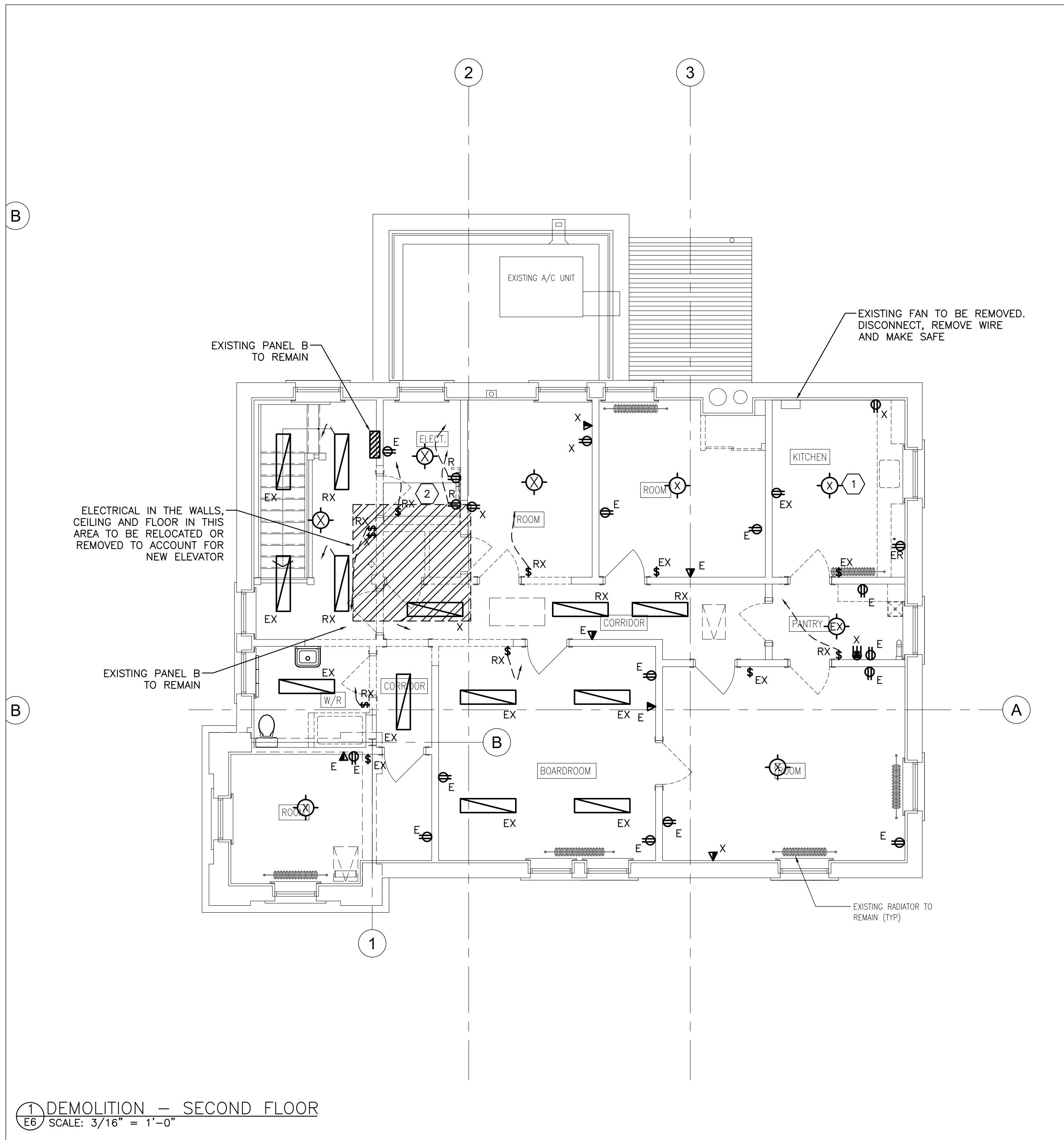
DESIGN	IAB	SCALE AS NOTED
DRAWN	IAB	DWG NO.
CHECKED	DRM	E2
APPROVED	IAB	
PROJECT	6847	



NOTE:
REPAIR/RESTORE ALL EXISTING PLASTER OR
KEENE CEMENT FINISHES WHERE DISTURBED AND
WHERE EXPOSED IN THE FINISHED WORK.



DESIGN	IAB	SCALE AS NOTED
DRAWN	IAB	DWG NO.
CHECKED	DRM	E5
APPROVED	IAB	
PROJECT	6847	



NOTES

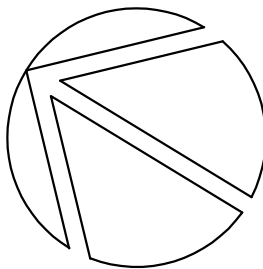
- 1 REMOVE ABOVE COUNTER RECEPTACLES AND ANY KITCHEN EQUIPMENT PRESENT.
- 2 EXISTING CLOCK EQUIPMENT TO REMAIN
- 3 REUSE EXISTING POWER WHERE POSSIBLE

X — REMOVE
E — EXISTING TO REMAIN
R — EXISTING TO BE RELOCATED
EX — EXISTING CIRCUIT TO REMAIN REPLACE DEVICE
RX — EXISTING CIRCUIT TO BE RELOCATED, REPLACE DEVICE

0	ISSUED FOR TENDER & PERMIT	15/07/22	DRM
NO.	DESCRIPTION	DATE	BY

REVISIONS

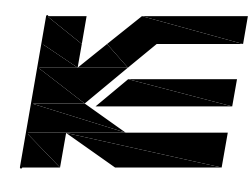
Kirkland Engineering Ltd BCIN: 28857



NOT TO BE USED FOR CONSTRUCTION UNLESS SIGNED BY THE ENGINEER.

THIS DRAWING IS AN INSTRUMENT OF PROFESSIONAL SERVICE FOR USE EXCLUSIVELY ON THIS PROJECT. RE-USE OF ANY PORTION OF THIS DOCUMENT IS PROHIBITED.

Copyright 2022 Kirkland Engineering Ltd



570 Water Street
Peterborough, Ontario
K9H 3M8
p. (705) 745-2831
f. (705) 741-1526
www.kirklandeng.com

KIRKLAND ENGINEERING LTD.

PROJECT

ACCESSIBILITY RENOS
FORMER LAKEFIELD POST
OFFICE

12 QUEEN STREET
LAKEFIELD, ONTARIO

TITLE

SECOND FLOOR
DEMOLITION

DESIGN	IAB	SCALE AS NOTED
DRAWN	IAB	DWG NO.
CHECKED	DRM	
APPROVED	IAB	
PROJECT	6847	

E6