



## **Hazardous Building Materials Assessment (Pre-construction)**

HVAC Ventilation and Accessible  
Washroom

Monsignor Philip Coffey Catholic School  
1324 Oxford Street, Oshawa, Ontario

Prepared for:

### **Durham Catholic District School Board**

650 Rossland Road West  
Oshawa, Ontario, L1J 7C4

April 25, 2022

Pinchin File: 306413.009



**Hazardous Building Materials Assessment (Pre-construction)**

Monsignor Philip Coffey Catholic School, 1324 Oxford Street, Oshawa, Ontario  
Durham Catholic District School Board

April 25, 2022

Pinchin File: 306413.009

<b>Issued to:</b>	<b>Durham Catholic District School Board</b>
<b>Issued on:</b>	<b>April 25, 2022</b>
<b>Pinchin File:</b>	<b>306413.009</b>
<b>Issuing Office:</b>	<b>Mississauga, ON</b>

---

Author:	Willis Asiedu
	Project Technologist
	289.830.2435
	<a href="mailto:wasiedu@pinchin.com">wasiedu@pinchin.com</a>

Reviewer:	Michael Horobin, C.E.T., EP
	Project Manager
	905.245.0691
	<a href="mailto:mhorobin@pinchin.com">mhorobin@pinchin.com</a>

Reviewer:	Dustin Copeland, C.Tech
	Operations Manger
	905.363.1469
	<a href="mailto:dcopeland@pinchin.com">dcopeland@pinchin.com</a>



## EXECUTIVE SUMMARY

Durham Catholic District School Board (Client) retained Pinchin Ltd. (Pinchin) to conduct a hazardous building materials assessment at Monsignor Philip Coffey Catholic School located at 1324 Oxford Street, Oshawa, Ontario. Pinchin performed the assessment on March 18, 2022.

The objective of the assessment was to identify specified hazardous building materials in preparation for building renovation. The proposed work as identified by the Client includes adding additional HVAC ventilation in all areas of the school and conversion of the Girl's Changeroom to an accessible washroom.

The results of this assessment are intended for use with a properly developed scope of work or performance specifications and safe work procedures.

The assessed area included all areas of the school with additional focus to the Girls Washroom/Change room/Shower (Location 8), as shown on the drawings in Appendix I.

## SUMMARY OF FINDINGS

The following is a summary of significant findings; refer to the body of the report for detailed findings:

### Asbestos:

- Brown caulking on interior door frames.
- Parging cement pipe insulation on pipe fittings and elbows.
- Drywall joint compound on walls and ceilings.
- Libby Amphibole vermiculite within perimeter block wall cavities.
- White cementitious layer under floor ceramic tiles.
- Terrazzo flooring.
- Sealants on pipe threads.
- All asbestos-containing materials were observed to be in good condition.

### Lead:

- White paint on concrete block walls has low levels of lead on wood door.

Silica: Crystalline silica is present in concrete, mortar, masonry, ceramics, drywall, ceiling tiles and plaster.

Mercury: Mercury vapour is present in lamp tubes.

Polychlorinated Biphenyls (PCBs): PCBs are not present.

Mould and Water Damage: Visible mould and water damage was not observed.



## SUMMARY OF RECOMMENDATIONS

The following is a summary of significant recommendations; refer to the body of the report for detailed recommendations.

1. Conduct further investigation of the following items, which was not completed during this assessment:
  - a. Sample parging cement above ceiling if disturbed as part of the planned renovations.
  - b. Sample drywall joint compound if disturbed as part of the planned renovations.
  - c. Sample sealants on pipe threads if disturbed as part of the planned renovations.
2. Prepare a scope of work or specifications and safe work procedures for the hazardous materials removal required for the planned work.
3. Do not disturb suspected hazardous building materials discovered during the planned work, which have not been identified in this report and arrange for further evaluation and testing.
4. Remove and properly dispose of asbestos-containing materials prior to renovation activities.
5. Recycle mercury-containing lamp tubes when removed from service.
6. Follow appropriate safe work procedures when handling or disturbing asbestos, lead, silica, and mould.

*This Executive Summary is subject to the same standard limitations as contained in the report and must be read in conjunction with the entire report.*



## TABLE OF CONTENTS

1.0	INTRODUCTION AND SCOPE .....	1
1.1	Scope of Assessment .....	1
2.0	METHODOLOGY .....	2
3.0	BACKGROUND INFORMATION .....	2
3.1	Building Description .....	2
3.2	Existing Reports .....	3
4.0	FINDINGS .....	3
4.1	Asbestos .....	3
4.2	Lead .....	7
4.3	Silica .....	8
4.4	Mercury .....	8
4.5	Polychlorinated Biphenyls .....	8
4.6	Mould and Water Damage .....	9
5.0	RECOMMENDATIONS .....	9
5.1	General .....	9
5.2	Building Renovation Work .....	9
6.0	TERMS AND LIMITATIONS .....	10
7.0	REFERENCES .....	11

## APPENDICES

APPENDIX I	Drawings
APPENDIX II-A	Asbestos Analytical Certificates
APPENDIX II-B	Lead Analytical Certificates
APPENDIX II-C	PCB Analytical Certificates
APPENDIX III	Methodology
APPENDIX IV	Location Summary Report
APPENDIX V	Hazardous Materials Summary Report / Sample Log
APPENDIX VI	HMIS All Data Report



## **1.0 INTRODUCTION AND SCOPE**

Durham Catholic District School Board (Client) retained Pinchin Ltd. (Pinchin) to conduct a hazardous building materials assessment at Monsignor Philip Coffey Catholic School located at 1324 Oxford Street, Oshawa, Ontario.

Pinchin performed the assessment on March 18, 2022. The surveyor was unaccompanied during the assessment. The assessed area was occupied at the time of the assessment.

The objective of the assessment was to identify specified hazardous building materials in preparation for building renovation activities. The proposed work as identified by the Client includes adding additional HVAC ventilation throughout the school and conversion of the Girl's Changeroom (Location 8) to an accessible washroom.

The results of this assessment are intended for use with a properly developed scope of work or performance specification.

### **1.1 Scope of Assessment**

The **assessed area** is included all interiors areas of the building, as described by the Client, and identified in the drawings in Appendix I.

The assessment was performed to establish the type of specified hazardous building materials, locations and approximate quantities incorporated in the structure(s) and its finishes.

For the purpose of the assessment and this report, hazardous building materials are defined as follows:

- Asbestos
- Lead
- Silica
- Mercury
- Polychlorinated Biphenyls (PCBs)
- Mould

The following Designated Substances are not typically found in building materials in a composition/state that is hazardous and were not included in this assessment:

- Arsenic
- Acrylonitrile
- Benzene



## Hazardous Building Materials Assessment (Pre-construction)

Monsignor Philip Coffey Catholic School, 1324 Oxford Street, Oshawa, Ontario  
Durham Catholic District School Board

April 25, 2022

Pinchin File: 306413.009

- Coke oven emissions
- Ethylene oxide
- Isocyanates
- Vinyl chloride monomer

## 2.0 METHODOLOGY

Pinchin conducted a room-by-room assessment (rooms, corridors, service areas, exterior, etc.) to identify the hazardous building materials as defined in the scope.

The assessment included limited demolition of wall and ceiling finishes (plaster) to view concealed conditions at representative areas as permitted by the current building use. Limited destructive testing of flooring was conducted where possible (under ceramic tiles, carpets, or multiple layers of flooring). Demolition of exterior building finishes, masonry walls (chases, shafts etc.), and structural surrounds was not conducted.

Limited demolition of masonry block walls (core holes) was conducted to investigate for loose fill vermiculite insulation. Sampling of roofing materials was not conducted

For further details on the methodology including test methods, refer to Appendix III.

Samples S0028A-C, S0029A-C and S0030A-C are present on the asbestos analytical certificate and P0002 and P0003 are present on the PCB analytical certificate; but are not referenced in this report as they were collected as part of another project at Monsignor Phillip Coffey.

## 3.0 BACKGROUND INFORMATION

### 3.1 Building Description

Description Item	Details
Use	School
Number of Floors	One storey with basement mechanical room
Total Area	The assessed area is 30,000 square feet.
Year of Construction	The building was constructed in 1958 with an addition in 1968.
Structure	Structural steel, concrete
Exterior Cladding	Brick
HVAC	Boiler and hot water heating to radiators
Roof	Not Assessed



Description Item	Details
Flooring	Vinyl tile, terrazzo, ceramic tile
Interior Walls	Drywall, concrete block, ceramic tiles
Ceilings	Plaster, drywall, acoustic ceiling tiles

### 3.2 Existing Reports

Pinchin previously prepared the following reports, which have been reviewed as part of this assessment:

- *“Hazardous Building Material Assessment, Monsignor Phillip Coffey Catholic School, 1324 Oxford Street, Oshawa, Ontario”, dated March 30, 2015, Pinchin File 102346.*
- *“Hazardous Building Material Assessment, Monsignor Phillip Coffey Catholic School, 1324 Oxford Street, Oshawa, Ontario”, dated April 24, 2018, Pinchin File 221713.*
- *“Asbestos Reassessment, Durham Catholic District School Board, Monsignor Philip Coffey Catholic School, 1324 Oxford Street, Oshawa, Ontario”, dated August 31, 2021, Pinchin File 293276.*

## 4.0 FINDINGS

The following section summarizes the findings of the assessment and provides a general description of the hazardous materials identified and their locations. For details on approximate quantities, condition, friability, accessibility, and locations of hazardous materials; refer to the Hazardous Material Summary / Sample Log and All Data Report in Appendices V and VI.

Any quantities listed in this report or data tables are estimated based on visual approximations only and are subject to variation.

### 4.1 Asbestos

#### 4.1.1 Pipe Insulation

Parging cement, presumed to contain asbestos, is present on domestic water pipe fittings above the plaster ceiling in the Girls Washroom/Change room/Shower (Location 8).

Remaining pipes are either uninsulated or insulated with non-asbestos fibreglass.

Pipes insulated with asbestos-containing insulations may be present in inaccessible spaces such as above solid ceilings, in chases, in column enclosures and within shafts.

Since the presumed asbestos parging cement is adjacent to the plaster ceiling, disturbance of plaster ceiling is considered an asbestos procedure and asbestos precautions should be followed.





Pipes are insulated with non-asbestos fiberglass above ceiling.



Presumed asbestos containing parging cement above ceiling.

#### 4.1.2 Duct Insulation and Mastic

Ducts are either uninsulated or insulated with non-asbestos fiberglass (foil-faced or canvas jacketing).

Mastic was not observed on sections of ducts inspected.

#### 4.1.3 Mechanical Equipment

Mechanical equipment (boiler, breeching and hot water tanks) is either uninsulated or insulated with non-asbestos fiberglass.

#### 4.1.4 Vermiculite

Asbestos containing vermiculite is present on the exterior walls of the school.

Additional destructive testing was conducted along the interior concrete block walls, including creating penetrations at ten locations, around the Girls Washroom/Change room/Shower (Location 8). The locations of destructive testing have been indicated on the drawings in Appendix I. Loose fill vermiculite was not observed within the cavities of the interior walls where assessed.

#### 4.1.5 Plaster

Plaster present on ceilings within Girls Washroom/Change room/Shower (Location 8) does not contain asbestos (samples S0027A-C). Previous sampling throughout the school were also found to be non-asbestos (samples S0002, S0004, S0005A-C, S0006).

Since the presumed asbestos parging cement is adjacent to the plaster ceiling, disturbance of plaster ceiling is considered an asbestos procedure and asbestos precautions should be followed.



Plaster present on ceilings within Girls Washroom/Change room/Shower (Location 8).

#### 4.1.6 Drywall Joint Compound

Drywall joint compound, presumed to contain asbestos is present as a wall and ceiling finish in various locations within the building. Drywall joint compound should be sampled if it is expected to be disturbed as part of the planned renovations. Alternatively, drywall joint compound should be presumed to contain asbestos.

Drywall joint compound was previously sampled in Classrooms 103 and 105 (Pinchin File No 221713 samples 0020A-C and 0024A-C) and found to be non-asbestos.

#### 4.1.7 Sealants, Caulking, and Putty

The following table presents a summary of caulking, sealants, and putties present:

Material, Colour	Application	Sample Locations	Sample Number	Asbestos Type
Caulking, Brown	Door Frames	Women's Changeroom (Location 8)	S0026A-C	Chrysotile



Asbestos containing brown caulking present on interior door frames.

#### 4.1.8 Other Building Materials

White paint present on concrete block does not contain asbestos within Girls Washroom/Change room/Shower (Location 8) (samples S00023A-C).

Thin-set under ceramic tiles on the floors in the Girls Washroom/Change room/Shower (Location 8) does not contain asbestos (samples S00025A-C).

Thin-set under ceramic tiles on the walls in the Girls Washroom/Change room/Shower (Location 8) does not contain asbestos (samples S00025A-C).

White cementitious layer between thin set and mortar layers was located beneath ceramic tile and found to be containing chrysotile asbestos, present on the floor in the Girls Washroom/Change room/Shower (Location 8) (samples S0024A-C ). This material is non-friable and in good condition.

Sealants on pipe threads are presumed to contain asbestos until further sampling proves otherwise.



Non-asbestos white paint on concrete within Girls Washroom/Change room/Shower (Location 8).



Non-asbestos thin set within Girls Washroom/Change room/Shower (Location 8).



Non-asbestos thin set on walls within Girls Washroom/Change room/Shower (Location 8).

#### 4.1.9 Excluded Materials

The following is a list of materials which may contain asbestos and was excluded from the assessment. These materials are presumed to contain asbestos until otherwise proven by sampling and analysis:

- Electrical components
- Soffit and fascia boards

## 4.2 Lead

#### 4.2.1 Paints and Surface Coatings

The following table summarizes the analytical results of paints sampled.

Sample Number	Colour, Substrate Description	Sample Location	Lead (%)
L0001	White paint on masonry	Girls Washroom/Change room/Shower (Location 8)	0.27
L0002	Blue paint on Door	Girls Washroom/Change room/Shower (Location 8)	0.015
L02.lab cert. 11807885	Dark grey paint on metal door frame	Stairs	<0.0069

Results above 0.1% (1,000 mg/kg) are considered lead-containing, and over 0.5% (5,000 mg/kg) are considered lead-based.

Results less than or equal to 0.1% (1,000 mg/kg), but equal to or greater than 0.009% (90 mg/kg), are considered low-level lead paints or surface coatings in accordance with the EACC guideline.

Paints containing less than 0.009% (90 mg/kg) lead is assumed to be insignificant.

#### 4.2.2 *Lead Products and Applications*

Lead products were not found during the assessment.

#### 4.2.3 *Excluded Lead Materials*

Lead is known to be present in a number of materials which were not assessed or sampled. The following materials, where found, should be presumed to contain lead.

- Electrical components, including wiring connectors, grounding conductors, and solder
- Solder on pipe connections
- Glazing on ceramic tiles

### 4.3 **Silica**

Crystalline silica is known to be a component of the following materials:

- Poured or pre-cast concrete
- Masonry and mortar
- Ceramic tiles and grout
- Plaster
- Drywall

### 4.4 **Mercury**

#### 4.4.1 *Lamps*

Mercury vapour is present in fluorescent lamp tubes

#### 4.4.2 *Mercury-Containing Devices*

Mercury-containing devices were not found during the assessment.

### 4.5 **Polychlorinated Biphenyls**

#### 4.5.1 *Caulking and Sealants*

The following table presents a summary of caulking sampled:

Material, Colour	Sample Location (Location #)	Sample Number	PCB concentration mg/kg
Caulking, Brown	Girls Washroom/Change room/Shower (Location 8)	PCB-01	48

Brown caulking is considered a non-PCB solid based on the 50ppm threshold.



#### *4.5.2 Lighting Ballasts*

Based on information confirmed by visual observations (evidence of T-5 or T-8 fixtures) the building has been comprehensively re-lamped and will not contain PCB ballasts.

#### *4.5.3 Transformers*

Transformers were not found during the assessment.

### **4.6 Mould and Water Damage**

Visible mould growth and water damage was not found during the assessment.

## **5.0 RECOMMENDATIONS**

### **5.1 General**

1. Prepare scope of work or performance specifications for hazardous material removal required for the planned work. The specifications should include safe work practices, personal protective equipment, respiratory protection, and disposal of waste materials.
2. If suspected hazardous building materials are discovered during the planned work, which are not identified in this report, do not disturb, and arrange for further testing and evaluation.
3. Conduct further investigation of the following items, areas, or locations, which were not completed during this assessment:
  - a. Sample parging cement above ceiling prior to renovations.
  - b. Sample drywall joint compound if disturbed as part of the planned renovations.
  - c. Sample sealants on pipe threads if disturbed as part of the planned renovations.
4. Provide this report and the detailed plans and specifications to the contractor prior to bidding or commencing work.
5. Retain a qualified consultant to specify, observe and document the successful removal of hazardous materials.
6. Update the asbestos inventory upon completion of the abatement and removal of asbestos-containing materials and any other relevant findings.

### **5.2 Building Renovation Work**

The following recommendations are made regarding renovation involving the hazardous materials identified.



#### *5.2.1 Asbestos*

Remove asbestos-containing materials (ACM) prior to renovation, alteration, or maintenance if ACM may be disturbed by the work.

If the identified ACM will not be removed prior to commencement of the work, any potential disturbance of ACM must follow asbestos precautions appropriate for the type of work being performed.

Asbestos-containing materials must be disposed of at a landfill approved to accept asbestos waste.

#### *5.2.2 Lead*

For lead-containing or lead-based paints (i.e., greater than the EACC guideline of 0.1% (1,000 mg/kg) for lead-containing paints, and 0.5% (5,000 mg/kg) for lead-based), construction disturbance may result in over-exposure to lead dust or fumes. The need for work procedures, engineering controls and personal protective equipment should be assessed on a site-specific basis to comply with Ministry of Labour, Training and Skills Development regulations and guidelines.

For paints identified as having low levels of lead (i.e., less than the EACC guideline of 0.1% (1,000 mg/kg) for lead-containing paints but equal to or above 0.009% (90 mg/kg)) special precautions are not recommended unless aggressive disturbance (grinding, blasting, torching) is planned. Exposure from construction disturbance of paints containing lead less than 0.009% (90 mg/kg) is assumed to be insignificant.

#### *5.2.3 Silica*

Construction disturbance of silica-containing products may result in excessive exposures to airborne silica, especially if performed indoors and dry. Cutting, grinding, drilling or demolition of materials containing silica should be completed only with proper respiratory protection and other worker safety precautions that comply with per applicable regulations and guidelines.

#### *5.2.4 Mercury*

Do not break lamps. Recycle and reclaim mercury from fluorescent lamps when taken out of service. Mercury is classified as a hazardous waste and must be disposed of in accordance with applicable regulations.

### **6.0 TERMS AND LIMITATIONS**

This work was performed subject to the Terms and Limitations presented or referenced in the proposal for this project.



Information provided by Pinchin is intended for Client use only. Pinchin will not provide results or information to any party unless disclosure by Pinchin is required by law. Any use by a third party of reports or documents authored by Pinchin or any reliance by a third party on or decisions made by a third party based on the findings described in said documents, is the sole responsibility of such third parties. Pinchin accepts no responsibility for damages suffered by any third party as a result of decisions made or actions conducted. No other warranties are implied or expressed.

## **7.0 REFERENCES**

The following legislation and documents were referenced in completing the assessment and this report:

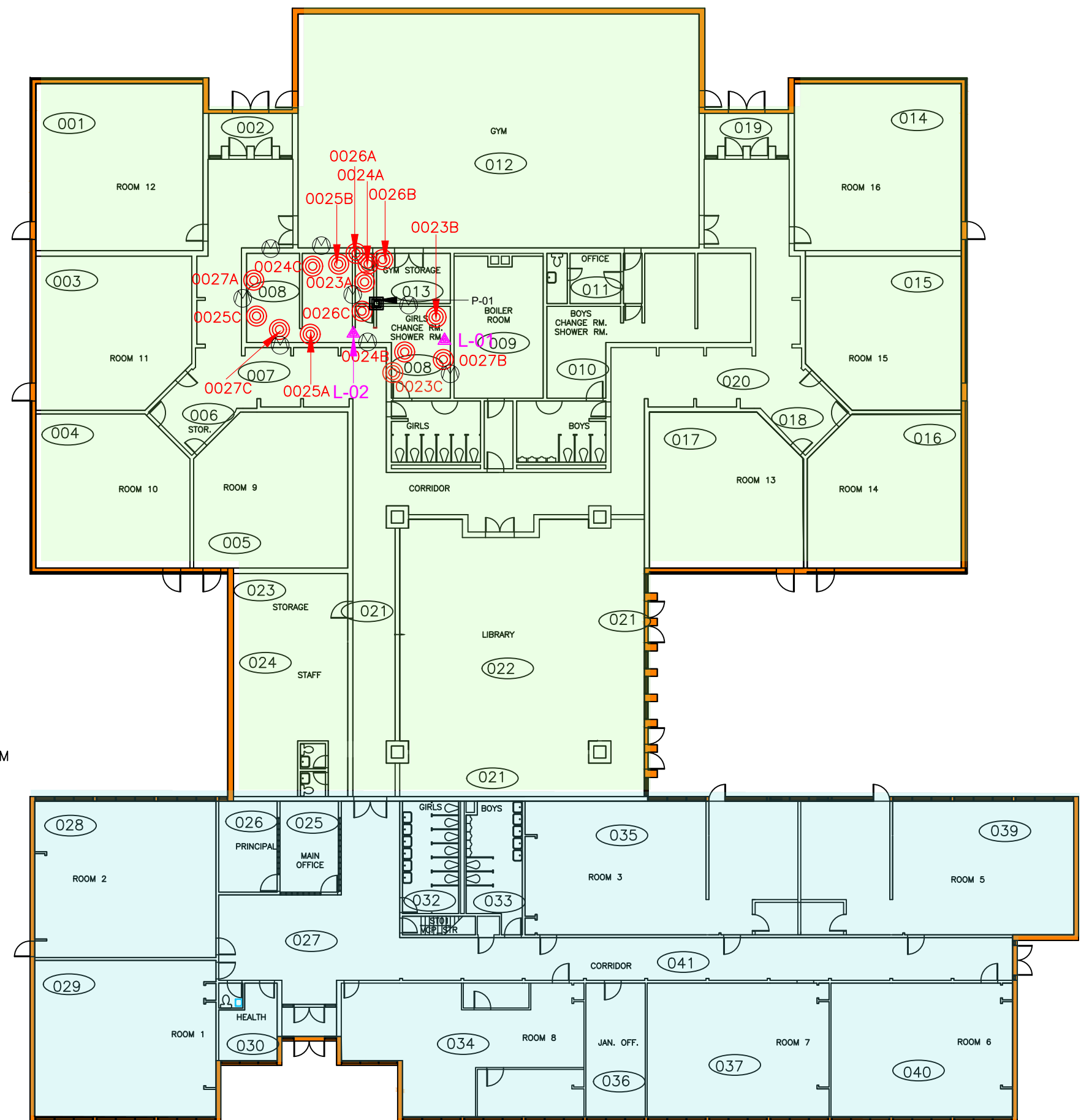
1. Asbestos on Construction Projects and in Buildings and Repair Operations, Ontario Regulation 278/05.
2. Designated Substances, Ontario Regulation 490/09.
3. Lead on Construction Projects, Ministry of Labour Guidance Document.
4. The Environmental Abatement Council of Canada (EACC) Lead Guideline for Construction, Renovation, Maintenance or Repair.
5. Ministry of the Environment Regulation, R.R.O. 1990 Reg. 347 as amended.
6. Ministry of the Environment Regulation, R.R.O. 1990 Reg. 362 as amended.
7. Silica on Construction Projects, Ministry of Labour Guidance Document.
8. Alert – Mould in Workplace Buildings, Ontario Ministry of Labour.

\\pinchin.com\pet\Job\306000s\0306413.000 DCDSB, Various Schools, HAZ, ASMT\0306413.009 DCDSB, MSGR Philip Coffey, Oshawa, HAZ, ASMT\Deliverables\Washroom Changeroom\306413.009 HBMA MSGR Philip Coffey 1324 Oxford St Oshawa ON DCDSB April 25 2022.docx

Template: Master Report for Hazardous Materials Assessment (Pre-Construction), HAZ, July 29, 2021



**APPENDIX I**  
**Drawings**



#### LEGEND

- ASBESTOS BULK SAMPLE
- LEAD BULK SAMPLE
- PCB BULK SAMPLE
- PINCHIN LOCATION NUMBER
- VERMICULITE DRILLHOLE
- 1958 PHASE OF CONSTRUCTION
- 1968 PHASE OF CONSTRUCTION
- VERMICULITE INSULATION

NOT ALL KNOWN OR SUSPECTED ASBESTOS-CONTAINING BUILDING MATERIALS MAY BE DEPICTED ON THE DRAWING. REFER TO THE ASBESTOS ASSESSMENT REPORT FOR A COMPLETE LIST OF KNOWN AND SUSPECTED ASBESTOS-CONTAINING BUILDING MATERIALS.

LEGEND IS COLOUR DEPENDENT. NON-COLOUR COPIES MAY ALTER INTERPRETATION.

BASE PLAN PROVIDED BY CLIENT.



PROJECT NAME:  
HAZARDOUS BUILDING MATERIAL ASSESSMENT

CLIENT NAME:  
DURHAM CATHOLIC DISTRICT SCHOOL BOARD

PROJECT LOCATION:  
MONSIGNOR PHILLIP COFFEY  
1324 OXFORD STREET  
OSHAWA, ONTARIO

FIGURE NAME:  
GROUND FLOOR

PROJECT NUMBER:  
306413.009

SCALE:  
NOT TO SCALE

DRAWN BY:  
PINCHIN LTD

REVIEWED BY:  
MH

DATE:  
APR 2022

FIGURE NUMBER:  
1 OF 1

**APPENDIX II-A**  
**Asbestos Analytical Certificates**



# Bulk Asbestos Analysis

By Polarized Light Microscopy  
EPA Method: 600/R-93/116 and 600/M4-82-020



**Customer:** Pinchin Ltd.  
191 Bloor Street East  
Oshawa, ON L1H 3M3

**Attn:** Sanjeet Dadhwal  
Christopher Fennell

**Lab Order ID:** 11808052  
**Analysis ID:** 11808052\_PLM  
**Date Received:** 4/3/2018  
**Date Reported:** 4/5/2018

**Project:** 221713, Monsignor Phillip Coffey, 1324 Oxford Street, Oshawa, Ontario, Durham Catholic District School board, Hazardous Building Materials Assessment

Sample ID	Description	Asbestos	Fibrous Components	Non-Fibrous Components	Attributes
Lab Sample ID	Lab Notes				Treatment
0020A	Drywall joint compound in Classroom 103	None Detected		100% Other	White Non Fibrous Homogeneous
11808052PLM_1					Crushed
0020B	Drywall joint compound in Classroom 105	None Detected		100% Other	White Non Fibrous Homogeneous
11808052PLM_2					Crushed
0020C	Drywall joint compound in Classroom 103	None Detected		100% Other	White Non Fibrous Homogeneous
11808052PLM_3					Crushed
0021A	Grey adhesive on underside of sink in Classroom 103	None Detected		100% Other	Gray Non Fibrous Homogeneous
11808052PLM_4					Dissolved
0021B	Grey adhesive on underside of sink in Classroom 103	None Detected		100% Other	Gray Non Fibrous Homogeneous
11808052PLM_5					Dissolved
0021C	Grey adhesive on underside of sink in Classroom 121	None Detected		100% Other	White Non Fibrous Homogeneous
11808052PLM_6					Dissolved
0022A	Brown ceiling tile adhesive in Classroom 103 washroom	None Detected		100% Other	Brown Non Fibrous Homogeneous
11808052PLM_7					Dissolved
0022B	Brown ceiling tile adhesive in Classroom 103 washroom	None Detected		100% Other	Brown Non Fibrous Homogeneous
11808052PLM_8					Dissolved

**Disclaimer:** Due to the nature of the EPA 600 method, asbestos may not be detected in samples containing low levels of asbestos. We strongly recommend that analysis of floor tiles, vermiculite, and/or heterogeneous soil samples be conducted by TEM for confirmation of "None Detected" by PLM. This report relates only to the samples tested and may not be reproduced, except in full, without the written approval of SAL. This report may not be used by the client to claim product endorsement by NVLAP or any other agency of the U.S. government. Analytical uncertainty available upon request. Scientific Analytical Institute participates in the NVLAP Proficiency Testing program. Unless otherwise noted blank sample correction was not performed. Estimated MDL is 0.1%.

Bethany Nichols (15)

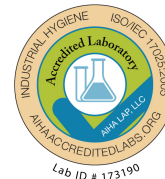
Analyst

Approved Signatory



# Bulk Asbestos Analysis

By Polarized Light Microscopy  
EPA Method: 600/R-93/116 and 600/M4-82-020



**Customer:** Pinchin Ltd.  
191 Bloor Street East  
Oshawa, ON L1H 3M3

**Attn:** Sanjeet Dadhwal  
Christopher Fennell

**Lab Order ID:** 11808052  
**Analysis ID:** 11808052\_PLM  
**Date Received:** 4/3/2018  
**Date Reported:** 4/5/2018

**Project:** 221713, Monsignor Phillip Coffey, 1324 Oxford Street, Oshawa, Ontario, Durham Catholic District School board, Hazardous Building Materials Assessment

Sample ID	Description	Asbestos	Fibrous Components	Non-Fibrous Components	Attributes
Lab Sample ID	Lab Notes				Treatment
0022C	Brown ceiling tile adhesive in Classroom 105 washroom	None Detected		100% Other	Brown Non Fibrous Homogeneous
11808052PLM_9					Dissolved
0023A	Grey caulking in Classroom 103	None Detected		100% Other	White Non Fibrous Homogeneous
11808052PLM_10					Dissolved
0023B	Grey caulking on interior windows in Classroom 103	None Detected		100% Other	White Non Fibrous Homogeneous
11808052PLM_11					Dissolved
0023C	Grey caulking on interior windows in Classroom 105	None Detected		100% Other	White Non Fibrous Homogeneous
11808052PLM_12					Dissolved
0024A	Drywall joint compound on ceiling in Classroom 103	None Detected		100% Other	White Non Fibrous Homogeneous
11808052PLM_13					Crushed
0024B	Drywall joint compound on ceiling in Classroom 105	None Detected		100% Other	White Non Fibrous Homogeneous
11808052PLM_14					Crushed
0024C	Drywall joint compound on ceiling in Classroom 103	None Detected		100% Other	White Non Fibrous Homogeneous
11808052PLM_15					Crushed

**Disclaimer:** Due to the nature of the EPA 600 method, asbestos may not be detected in samples containing low levels of asbestos. We strongly recommend that analysis of floor tiles, vermiculite, and/or heterogeneous soil samples be conducted by TEM for confirmation of "None Detected" by PLM. This report relates only to the samples tested and may not be reproduced, except in full, without the written approval of SAI. This report may not be used by the client to claim product endorsement by NVLAP or any other agency of the U.S. government. Analytical uncertainty available upon request. Scientific Analytical Institute participates in the NVLAP Proficiency Testing program. Unless otherwise noted blank sample correction was not performed. Estimated MDL is 0.1%.


Bethany Nichols (15)

Analyst

Approved Signatory

11808052

Version 1-15-2012

<b>Client:</b>	Pinchin Ltd.	<p><b>*Instructions:</b></p> <p>Use Column "B" for your contact info</p> <p>To See an Example Click the bottom Example Tab.</p> <p>Enter samples between "&lt;&lt;" and "&gt;&gt;"</p> <p>Begin Samples with a "&lt;&lt;" above the first sample and end with a "&gt;&gt;" below the last sample. Only Enter your data on the first sheet "Sheet1"</p> <p>Note: Data 1 and Data 2 are optional fields that do not show up on the official report, however they will be included in the electronic data returned to you to facilitate your reintegration of the report data.</p>	Invoice to:
<b>Contact:</b>	Sanjeet Dadhwal		Contact name here
<b>Address:</b>	191 Bloor Street East		Email address here
<b>Phone:</b>	Oshawa, ON L1H 3M3		
<b>Fax:</b>	905-245-0690		
<b>Email:</b>	sdadhwal@hotmail.com		 <p>Scientific Analytical Institute</p> <p>4604 Dundas Dr. Greensboro, NC 27407 Phone: 336.292.3888 Fax: 336.292.3313 Email: lab@sailab.com</p>
	cfennell@hotmail.com		
<b>Project:</b>	221713, Monsignor Phillip Coffey, 1324 Oxford Street, Oshawa, Ontario, Durham Catholic District School board, Hazardous Building Materials Assessment		
<b>Client Notes:</b>			
<b>P.O. #.</b>	221713		
<b>Date Submitted:</b>	April 2, 2018		
<b>Analysis:</b>	PLM - Stop Positive		
<b>TurnAroundTime:</b>	4days		

Sample Number	Data 1 (Lab use only)	Sample Description	Data 2 (Lab use only)
---------------	-----------------------	--------------------	-----------------------

&lt;&lt;

0020A		Drywall joint compound in Classroom 103	
0020B		Drywall joint compound in Classroom 105	
0020C		Drywall joint compound in Classroom 103	
0021A		Grey adhesive on underside of sink in Classroom 103	
0021B		Grey adhesive on underside of sink in Classroom 103	
0021C		Grey adhesive on underside of sink in Classroom 121	
0022A		Brown ceiling tile adhesive in Classroom 103 washroom	
0022B		Brown ceiling tile adhesive in Classroom 103 washroom	
0022C		Brown ceiling tile adhesive in Classroom 105 washroom	
0023A		Grey caulking in Classroom 103	
0023B		Grey caulking on interior windows in Classroom 103	
0023C		Grey caulking on interior windows in Classroom 105	
0024A		Drywall joint compound on ceiling in Classroom 103	
0024B		Drywall joint compound on ceiling in Classroom 105	
0024C		Drywall joint compound on ceiling in Classroom 103	

&gt;&gt;

Accepted ☒Rejected ☐

J. Hamilton

4/3/18  
10:30 AM



## Pinchin Ltd. Asbestos Laboratory *Certificate of Analysis*

Project No.:	0306413.009		
Prepared For:	W. Asiedu / M. Horobin	Date Received:	March 22, 2022
Lab Reference No.:	b268500	Date Analyzed:	March 29, 2022
Analyst(s):	K. Bertuzzi	# Samples submitted:	3
		# Phases analyzed:	1

---

### **Method of Analysis:**

#### **EPA 600/R-93/116 - Method for the Determination of Asbestos in Bulk Building Materials dated July, 1993**

Bulk samples are checked visually and scanned under a stereomicroscope. Slides are prepared and observed under a Polarized Light Microscope (PLM) at magnifications of 40X, 100X or 400X as appropriate. Asbestos fibres are identified by a combination of morphology, colour, refractive index, extinction, sign of elongation, birefringence and dispersion staining colours. A visual estimate is made of the percentage of asbestos present. A reported concentration of less than (<) the regulatory threshold indicates the presence of confirmed asbestos in trace quantities, limited to only a few fibres or fibre bundles in an entire sample. This method complies with provincial regulatory requirements where applicable. Multiple phases within a sample are analyzed and reported separately.

All bulk samples submitted to this laboratory for asbestos analysis are retained for a minimum of three months. Samples may be retrieved, upon request, for re-examination at any time during that period.

The Pinchin Ltd. Mississauga asbestos laboratory is accredited by the National Institute of Standards and Technology, National Voluntary Laboratory Accreditation Program (NVLAP Lab Code 101270-0) for the 'EPA – 40 CFR Appendix E to Subpart E of Part 763, Interim Method of the Determination of Asbestos in Bulk Insulation Samples,' and the 'EPA 600/R-93/116: Method for the Determination of Asbestos in Bulk Building Materials'; and meets all requirements of ISO/IEC 17025:2017.

This report relates only to the items tested.

**NOTE:** *This test report may not be reproduced, except in full, without the written approval of the laboratory. The client may not use this report to claim product endorsement by NVLAP or any agency of the U.S. Government. This report is valid only when signed in blue ink by the analyst. Vinyl asbestos floor tiles contain very fine fibres of asbestos and may be missed by some laboratories using the PLM method. Internal verification studies performed by Pinchin indicate that the chance of missing asbestos in floor tiles is no higher than about 2%. The vinyl tile study and laboratory documentation on measurement uncertainty is available upon request. The analysis of dust samples by PLM cannot be used as an indicator of past or present airborne asbestos fibre levels.*



**Pinchin Ltd. Asbestos Laboratory**  
***Certificate of Analysis***

**Project No.:** 0306413.009  
**Prepared For:** W. Asiedu / M. Horobin

**Lab Reference No.:** b268500  
**Date Analyzed:** March 29, 2022

**BULK SAMPLE ANALYSIS**

SAMPLE IDENTIFICATION	SAMPLE DESCRIPTION	% COMPOSITION (VISUAL ESTIMATE)	
		ASBESTOS	OTHER
S0029A Wall, Vermiculite/concrete Block Walls, Vermiculite, Loc: 1, Classroom 12	Homogeneous, grey, beige and brown, loose particulate, micaceous material.	Libby Amphibole Asbestos Confirmed	Vermiculite > 75%
Comments:	This sample originated from Libby Montana (a mine known to be contaminated with amphibole asbestos and is sold under the brand name Zonolite) and was confirmed in our laboratory to contain asbestos fibres. The laboratory does not report a percentage due to the variable asbestos content of the vermiculite from bag to bag or even between sampling locations in the same installation. The overall percentage of asbestos in Libby Vermiculite has been shown to range up to 6% (Atkinson et al. 1982; Amandus et al. 1987). Pinchin recommends that once the material is confirmed to be Libby Zonolite, it be treated as an asbestos containing material (>0.5% asbestos).		
S0029B Wall, Vermiculite/concrete Block Walls, Vermiculite, Loc: 40, Classroom 6			Not Analyzed
Comments:	Analysis was stopped due to a previous positive result.		
S0029C Wall, Vermiculite/concrete Block Walls, Vermiculite, Loc: 28, Classroom 2			Not Analyzed
Comments:	Analysis was stopped due to a previous positive result.		

**Reviewed by:**

Digitally signed  
by Lian Noonan  
Date: 2022.03.29  
15:05:16-04'00'

**Reporting Analyst:**

Digitally signed  
by Lian Noonan  
Date: 2022.03.29  
15:04:56-04'00'



3 VE kept in house.  
Renewing to BVM.

Analyzed by: KB  
Reviewed by: [Signature]  
Report Sent by: [Signature]

## Pinchin Ltd. - Asbestos Laboratory Internal Asbestos Bulk Sample Chain of Custody

Client Name:		Project Address:	
Portfolio/Building No:		Pinchin File:	306413.009
Submitted by:	Willis Asiedu	Email:	<a href="mailto:wasiedu@pinchin.com">wasiedu@pinchin.com</a>
CC Results to:	Mike Horobin	CC Email:	<a href="mailto:mhorobin@pinchin.com">mhorobin@pinchin.com</a>
Date Submitted:	March 21 2022	Required by:	March 25 2022
# of Samples:	24 <u>3</u>	Priority:	5 Day TAT
Year of Building Construction (Mandatory, Years ONLY):		1958	
Do NOT Stop on Positive (Sample Numbers):			
Pinchin Group Company (Mandatory Field):		Pinchin	
HMIS2 Building Reference #:		103855/202221155756321	

To be Completed by Lab Personnel Only:			
Lab Reference #: <u>6268500 x9</u>	Time:	24 hour clock	
Received by:	Date:	Month	Day Year
Name(s) of Analyst(s):	<u>KB March 29/22</u>		

Sample Prefix	Sample No.	Sample Suffix	Sample Description/Location (Mandatory)
S	0023	A	Wall, Paint, White Paint On Masonry Block, Loc: 8, Girls Washroom/Change room/Shower
S	0023	B	Wall, Paint, White Paint On Masonry Block, Loc: 8, Girls Washroom/Change room/Shower
S	0023	C	Wall, Paint, White Paint On Masonry Block, Loc: 8, Girls Washroom/Change room/Shower
S	0024	A	Floor, Mortar, Thinset Under Ceramic Tile, Loc: 8, Girls Washroom/Change room/Shower
S	0024	B	Floor, Mortar, Thinset Under Ceramic Tile, Loc: 8, Girls Washroom/Change room/Shower
S	0024	C	Floor, Mortar, Thinset Under Ceramic Tile, Loc: 8, Girls Washroom/Change room/Shower
S	0025	A	Wall, Mortar, Thinset Under Ceramic Tile, Loc: 8, Girls Washroom/Change room/Shower
S	0025	B	Wall, Mortar, Thinset Under Ceramic Tile, Loc: 8, Girls Washroom/Change room/Shower

Sample Prefix	Sample No.	Sample Suffix	Sample Description/Location (Mandatory)
S	0025	C	Wall, Mortar, Thinset Under Ceramic Tile, Loc: 8, Girls Washroom/Change room/Shower
S	0026	A	Caulking, Brown Caulking On Door Frame, Loc: 8, Girls Washroom/Change room/Shower
S	0026	B	Caulking, Brown Caulking On Door Frame, Loc: 8, Girls Washroom/Change room/Shower
S	0026	C	Caulking, Brown Caulking On Door Frame, Loc: 8, Girls Washroom/Change room/Shower
S	0027	A	Ceiling, Plaster, Plaster On Ceiling, Loc: 8, Girls Washroom/Change room/Shower
S	0027	B	Ceiling, Plaster, Plaster On Ceiling, Loc: 8, Girls Washroom/Change room/Shower
S	0027	C	Ceiling, Plaster, Plaster On Ceiling, Loc: 8, Girls Washroom/Change room/Shower
S	0028	A	Caulking, Grey Caulking, Loc: 2, Vestibule
S	0028	B	Caulking, Grey Caulking, Loc: 44, Entrance Vestibule
S	0028	C	Caulking, Grey Caulking, Loc: 44, Entrance Vestibule
S	0029	A	Wall, Vermiculite/concrete Block Walls, Vermiculite, Loc: 1, Classroom 12 <i>Libby conf.</i>
S	0029	B	Wall, Vermiculite/concrete Block Walls, Vermiculite, Loc: 40, Classroom 6 <i>NA</i>
S	0029	C	Wall, Vermiculite/concrete Block Walls, Vermiculite, Loc: 28, Classroom 2 <i>NA</i>
S	0030	A	Caulking, Brown Caulking On Exterior Door Frame, Loc: 43, Exterior
S	0030	B	Caulking, Brown Caulking On Exterior Door Frame, Loc: 43, Exterior
S	0030	C	Caulking, Brown Caulking On Exterior Door Frame, Loc: 43, Exterior

**APPENDIX II-B**  
**Lead Analytical Certificates**



# Analysis for Lead Concentration in Paint Chips

by Flame Atomic Absorption Spectroscopy  
EPA SW-846 3050B/6010C/7000B



**Customer:** Pinchin Ltd.  
191 Bloor Street East  
Oshawa, ON L1H 3M3

**Attn:** Willis Asiedu  
Mike Horobin

**Lab Order ID:** 71988260  
**Analysis ID:** 71988260\_PBP  
**Date Received:** 3/23/2022  
**Date Reported:** 3/30/2022

**Project:** Coffey HBMA

Sample ID	Description	Mass	Concentration	Concentration
Lab Sample ID	Lab Notes	(g)	(ppm)	(% by weight)
L0001	Wall, Concrete (poured), White Paint On Masonry, Loc: 8, Girls Washroom/Change room/Show	0.0615	2700	0.27%
71988260PBP_1				
L0002	Struct, Wood, Blue Paint On Door, Loc: 8, Girls Washroom/Change room/Shower	0.1015	150	0.015%
71988260PBP_2				

Unless otherwise noted blank sample correction was not performed on analytical results. Scientific Analytical Institute participates in the AIHA ELPAT program. ELPAT Laboratory ID: 173190. This report relates only to the samples tested and may not be reproduced, except in full, without the written approval of SAI. Analytical uncertainty available upon request. The quality control samples run with the samples in this report have passed all EPA required specifications unless otherwise noted. RL: (Report Limit for an undiluted 50ml sample is 4µg Total Pb). Unless indicated, areas and volumes were provided by the customer.

Xaviera Watkins (2)

**Analyst**



Scientific Analytical Institute, Inc. 4604 Dundas Dr. Greensboro, NC 27407 (336) 292-3888

**Laboratory Director**




71988260

Version 1-15-2012

<b>Client:</b> <b>Contact:</b> <b>Address:</b> <b>Phone:</b> <b>Fax:</b> <b>Email:</b>	Pinchin Ltd. Willis Asiedu 191 Bloor St. E, Oshawa, Ont 289.830.2435  <a href="mailto:wasiedu@pinchin.com">wasiedu@pinchin.com</a> <a href="mailto:mhorobin@pinchin.com">mhorobin@pinchin.com</a>	<b>*Instructions:</b> Use Column "B" for your contact info  To See an Example Click the bottom Example Tab.  <p style="text-align: center;">2</p> <b>Begin Samples with a "&lt;&lt;" above the first sample          and end with a "&gt;&gt;" below the last sample.          Only Enter your data on the first sheet "Sheet1"</b>  Note: Data 1 and Data 2 are optional fields that do not show up on the official report, however they will be included in the electronic data returned to you to facilitate your reintegration of the report data.	<b>Scientific          Analytical          Institute</b>    <b>4604 Dundas Dr.          Greensboro, NC 27407          Phone: 336.292.3888          Fax: 336.292.3313          Email: lab@sailab.com</b>
<b>Project:</b>  <b>Client Notes:</b>  <b>P.O. #.</b> <b>Date Submitted:</b>  <b>Analysis:</b> <b>TurnAroundTime:</b>	Coffey HBMA   Paint Chips Flame AA  5 Day TAT		

Sample Number	Data 1 (Lab use only)	Sample Description	Data 2 (Lab use only)
<<			
L0001		Wall, Concrete (poured), White Paint On Masonry, Loc:8, Girls Washroom/Change room/Show	
L0002		Struct, Wood, Blue Paint On Door, Loc:8, Girls Washroom/Change room/Shower	
>>			

 3123  
 10:30 am

Accepted ☒

Rejected ☐

**APPENDIX II-C**  
**PCB Analytical Certificates**

## Certificate of Analysis

**Willis Asiedu**

Pinchin Ltd. (Oshawa)  
191 Bloor St E, Oshawa, Ont, L1H 3M3

Date of Issue: Mar 25, 2022

**Report Description:** 3 solid samples were submitted for the following chemical analysis

**Project Name:** Coffey HBMA  
**Project No.:** 306413.009  
**Site Location:** 1324 Oxford Street, Oshawa, ON

**Date Sampled:** Mar 18, 2022  
**Date Tested:** Mar 24, 2022  
**Sampled by:** Willis A

### Report Number: 22-0412

No.	Analyte	Result	Units	MDL	Comments	Technique / Test Method
<b>1</b>	<b><u>Sample ID.:</u> P0001 Brown Caulking On Door Frame, Loc.;</b>					
	PCBs in Solid	<b>48</b>	mg/Kg	0.2		LAB-M06 (EPA 3550C/8082A modified)
<b>2</b>	<b><u>Sample ID.:</u> P0002 Grey Caulking On Door Frame, Loc.;</b>					
	PCBs in Solid	<b>&lt;0.2</b>	mg/Kg	0.2		LAB-M06 (EPA 3550C/8082A modified)
<b>3</b>	<b><u>Sample ID.:</u> P0003 Brown Caulking On Exterior Door Frame, Loc.;</b>					
	PCBs in Solid	<b>6</b>	mg/Kg	0.2		LAB-M06 (EPA 3550C/8082A modified)

Results relate only to the samples tested above, as received.

Approved By:

**Son C.H. Le, (Chem.)**  
Lab Manager  
Phone: (519) 740-1333 Ext.: 1030  
Fax: (519) 740-2320  
Email: SonLe@aevitas.ca

The Analytical Chemistry Laboratory of Aevitas Inc. (Ayr) is accredited for specific tests in accordance with the recognized International Standard ISO/IEC 17025:2017, by the Canadian Association for Laboratory Accreditation (CALA) Inc. This accreditation demonstrates technical competence for a defined scope and the operation of a laboratory quality management system (refer to joint ISO-ILAC-IAF Communiqué dated April 2017). The laboratory quality management system of Aevitas Inc. (Ayr) also operates in accordance with the principles of ISO 9001.

All Analytical data is subject to uncertainty which, may vary with sample matrices, sample preparation techniques and instrumental parameters. As a general guideline, uncertainty may be expressed as approximately +/- 50% of the reported value at or near the Method Detection Limit (MDL) and +/-10% or less, of the reported result that is greater than 10 times the MDL. Method Detection Limits are defined as approximately 3 times the standard deviation value (at 99% confidence level), which is obtained from replicate analysis of a low-level standard as per the Ontario MOE - MISA Protocol for the Sampling and Analysis of Industrial / Municipal Wastewater (2016). MDL determination is based on undiluted samples with relatively low matrix interferences. Where dilutions are required, the reported MDL value will be scaled proportionally.

All testing procedures follow strict guidelines and quality assurance / quality control (QA/QC) protocols. QA/QC data is available for review at any time upon client's request.

**APPENDIX III**  
**Methodology**





## 1.0 GENERAL

An inspection was conducted to identify the type of Hazardous Building Materials incorporated in the structure and its finishes.

Information regarding the location and condition of hazardous building materials encountered and visually estimated quantities were recorded. The locations of any samples collected were recorded on small-scale plans. As-built drawings and previous reports were referenced where provided.

Sample collection was conducted in accordance with our Standard Operating Procedures.

### 1.1 Asbestos

The inspection for asbestos included friable and non-friable asbestos-containing materials (ACM). A friable material is a material that when dry can be crumbled, pulverized or powdered by hand pressure.

A separate set of samples was collected of each type of homogenous material suspected to contain asbestos. A homogenous material is defined by the US EPA as material that is uniform in texture and appearance, was installed at one time, and is unlikely to consist of more than one type or formulation of material. The homogeneous materials were determined by visual examination and available information on the phases of construction and prior renovations.

Samples were collected at a rate that is in compliance with the requirements of local regulations and guidelines. The sampling strategy was also based on known ban dates and phase out dates of the use of asbestos; sampling of certain building materials is not conducted after specific construction dates. In addition, to be conservative, several years past these dates are added to account for some uncertainty in the exact start / finish date of construction and associated usage of ACM. In some cases, manufactured products such as asbestos cement pipe were visually identified without sample confirmation.

The asbestos analysis was completed using a stop-positive approach. Only one result meeting the regulated criteria was required to determine that a material is asbestos-containing, but all samples must be analyzed to conclusively determine that a material is non-asbestos. The laboratory stopped analyzing samples from a homogeneous material once a result equal to or greater than the regulated criteria is detected in any of the samples of that material. All samples of a homogeneous material were analyzed if no asbestos is detected. In some cases, all samples were analyzed in the sample set regardless of result.

The analysis was performed in accordance with Test Method EPA/600/R-93/116: Method for the Determination of Asbestos in Bulk Building Materials, July 1993.

Analytical results were compared to the following criteria.

Jurisdiction*	Friable	Non-Friable
Ontario	0.5%	0.5%

\* If there is a conflict between federal and provincial criteria, the more stringent will apply.

Where building materials are described in the report as “non-asbestos” or “does not contain asbestos”, this means that either no asbestos was detected by the analytical method utilized in any of the multiple samples or, if detected, it is below the lower limit of an asbestos-containing material in the applicable regulation. Additionally, these terms are used for materials which historically are known to not include asbestos in their manufacturing.

## 1.2 Lead

Samples of distinctive paint finishes, and surface coatings present in more than a limited application, where removal of the paint is possible was collected. The samples were collected by scraping the painted finish to include base and covering applications.

Analysis for lead in paints or surface coatings was performed in accordance with EPA Method No. 3050B/Method No. 7420; flame atomic absorption.

Analytical results were compared to the following criteria.

Jurisdiction*	Units (%)	Units (ppm) / (mg/kg)
Ontario	0.1	1000

\* If there is a conflict between federal and provincial criteria, the more stringent will apply.

Other lead building products (e.g. batteries, lead sheeting, flashing) were identified by visual observation only.

## 1.3 Silica

Building materials known to contain crystalline silica (e.g. concrete, cement, tile, brick, masonry, mortar) were identified by visual inspection only. Pinchin did not perform sampling of these materials for laboratory analysis of crystalline silica content.

## 1.4 Mercury

Building materials, products or equipment (e.g. thermostats, barometers, pressure gauges, lamp tubes), suspected to contain mercury was identified by visually inspection only. Dismantling of equipment suspected of containing mercury was not performed. Sampling of these materials for laboratory analysis of mercury content was not performed.

### **1.5 Polychlorinated Biphenyls**

The potential for light ballast and oil filled transformers to contain PCBs was based on the age of the building, a review of maintenance records and examination of labels or nameplates on equipment, where present and accessible. The information was compared to known ban dates of PCBs and Environment Canada publications.

Dry type transformers were presumed to be free of dielectric fluids and hence non-PCB.

Fluids (mineral oil, hydraulic, Aroclor or Askarel) in transformers or other equipment were not sampled for PCB content.

Caulking, sealants, or paints were sampled and submitted for PCB analysis following EPA 3550C/8082A.

Sample results are compared to the criteria of 50 mg/kg for solids as stated in the PCB Regulation, SOR/2008-273.

### **1.6 Visible Mould**

The presence of mould or water damage was determined by visual inspection of exposed building surfaces. If any mould growth or water damage was concealed within building cavities it was not addressed in this assessment.

Template: Methodology for Hazardous Building Materials Assessment, HAZ, November 23, 2021

**APPENDIX IV**  
**Location Summary Report**

Client:DCDSB

Site: 1324 Oxford Street, Oshawa, ON

Building Name: Monsignor Philip Coffey

Survey Date:

Last Re-Assessment:

Location No.	Name or Description	Area ft <sup>2</sup>	Floor No.	Bldg. Phase	Notes
1	Classroom 12, room no. 12	840	NA	A	
2	Vestibule	91	NA	A	
3	Classroom 11, room no. 11	812	NA	A	
4	Classroom 10, room no. 10	812	NA	A	
5	Classroom 9, room no. 9	812	NA	A	
6	Corridor	96	NA	A	AT-001 painted black.
7	Corridor	696	NA	A	
8	Girls Washroom/Change room/Shower	1126	NA	A	
9	Boiler Room	430	NA	A	
10	Boys Washroom/Change Room/Shower	1126	NA	A	No access to shower room. No access to ceiling, hatch was stuck.
11	Office and Washroom	160	NA	A	
12	Gym	3025	NA	A	F2 - Replacement tile.
13	Gym storage	160	NA	A	
14	Classroom 16, room no. 16	840	NA	A	
15	Classroom 15, room no. 15	812	NA	A	
16	Classroom 14, room no. 14	812	NA	A	
17	Classroom 13, room no. 13	812	NA	A	2018 New Floor
18	Corridor	80	NA	A	
19	Vestibule	91	NA	A	
20	Corridor	696	NA	A	
21	Corridor	1520	NA	A	
22	Library	2500	NA	A	F1 - New vinyl floor tile.
24	Staff Room	781	NA	A	F2 - New vinyl floor tile. W2 - drywall pipe chase.
25	Meeting room	160	NA	A	F - Blue
26	Principal's Office	160	NA	A	
27	Corridor	654	NA	A	No access above ceiling 2
28	Classroom 2, room no. 2	980	NA	A	
29	Classroom 1, room no. 1	980	NA	A	
30	Health/Washroom	140	NA	A	
31	Storage/Washroom	130	NA	A	Location part of location 30.
32	Girls washroom	240	NA	A	
33	Boys Washroom	240	NA	A	
34	Office, room no. 8	840	NA	A	
35	Room 3, room no. 3	840	NA	A	
36	Custodian Office	200	NA	A	
37	Room 4, room no. 7	840	NA	A	
38	Classroom 4, room no. 4	840	NA	A	
39	Classroom 5, room no. 5	840	NA	A	
40	Classroom 6, room no. 6	840	NA	A	
41	Corridor	732	NA	A	
42	Basement Mechanical	400	NA	A	
44	Entrance Vestibule	30		A	

**APPENDIX V**

**Hazardous Materials Summary Report / Sample Log**

Client:DCDSB

Site: 1324 Oxford Street, Oshawa, ON

Building Name: Monsignor Philip Coffey

Survey Date:

HAZMAT	Sample No	System/Component/Material/Sample Description	Locations	Bldg. Phase	LF	SF	EA	%	Type	Positive	Friability
Asbestos	S0001	Floor   N/a   Vinyl Floor Tile And Mastic   Vinyl Floor Tile, 12 Inch Green, Location 1	1,14	A	0	1675	0	0	Chrysotile	Yes	NF
Asbestos	S0003	Floor   N/a   Vinyl Floor Tile And Mastic   Vinyl Floor Tile, 12 Inch White, Location 3, Location 4 And Location 5	3,4,5,12,14,15,16	A	0	6183	0	0	None Detected	No	
Asbestos	S0005	Ceiling   N/a   Plaster   White Plaster, Ceiling, Location 9	2,8,9,10,11,13,19	A	0	4310	0	0	None Detected	No	
Asbestos	V0006	Ceiling     Plaster   Plaster, Ceiling, Location 10	28,29	A	0	1960	0	0	None Detected	No	
Asbestos	S0010	Wall     Vermiculite/concrete Block Walls   Drywall Joint Compound Renovations 2014	32,33	A	0	250	1	0	Chrysotile	Yes	F
Asbestos	S0020 ABC	Ceiling     Ceiling Tiles (glue-on)   12" X 12" Glued -on With Random Pinholes	27	A	0	600	0	0	None Detected	No	
Asbestos	S0021 AB	Other     Mastic   Brown Mastic Adhered To Ceiling Tile	27	A	0	100	0	0	None Detected	No	
Asbestos	S0022 ABC	Ceiling     Drywall (no Compound)   Drywall Above Ceiling	27	A	0	600	0	0	None Detected	No	
Asbestos	S0023 ABC	Wall     Paint   White Paint On Masonry Block	8	A	0	1126	0	0	None Detected	No	
Asbestos	S0024 ABC	Floor     Mortar   Thinset Under Ceramic Tile	8	A	0	1126	0	0	Chrysotile	Yes	NF
Asbestos	S0025 ABC	Wall     Mortar   Thinset Under Ceramic Tile	8	A	0	800	0	0	None Detected	No	
Asbestos	S0026 ABC	Other     Caulking   Brown Caulking On Door Frame	1,3,4,5,8,14,15,16,17,28,29	A	110	0	0	0	Chrysotile	Yes	NF
Asbestos	S0027 ABC	Ceiling     Plaster   Plaster On Ceiling	8	A	0	0	0	0	None Detected	No	
Asbestos	S0028 ABC	Other     Caulking   Grey Caulking	2,19,21,27,41,44	A	50	0	0	0	None Detected	No	
Asbestos	S0029 ABC	Wall     Vermiculite/concrete Block Walls   Vermiculite	1,28,40	A	0	5950	0	0	Libby Amphibole Detected	Yes	F
Asbestos	V9000	Wall     Vermiculite/concrete Block Walls   Vermiculite	2,3,4,5,14,15,16,17,19,44	A	0	13800	0	0	Confirmed Asbestos	Yes	F
Asbestos	V9500	Ceiling   N/a   Drywall And Joint Compound	32,33,34,37,38,39,40	A	0	4680	0	0	Presumed Asbestos	Yes	NF
Asbestos	V9500	Floor   N/a   Mortar	2,6,7,10,11,13,18,19,20,21,22,24,27	A	0	5561	0	0	Presumed Asbestos	Yes	NF
Asbestos	V9500	Floor   N/a   Terrazzo	27,28,29,30,31,32,33,34,35,36,37,38,39,40,41,44	A	0	8732	0	0	Presumed Asbestos	Yes	NF
Asbestos	V9500	Piping   Domestic Hot Water   Parging Cement	8	A	0	0	6	0	Presumed Asbestos	Yes	F
Asbestos	V9500	Wall   N/a   Drywall And Joint Compound	5,21,24,26,28,29,31,34,35,36,37,38,39,40	A	0	6330	0	0	Presumed Asbestos	Yes	NF

## HAZARDOUS MATERIALS SUMMARY / SAMPLE LOG

HAZMAT	Sample No	System/Component/Material/Sample Description	Locations	Bldg. Phase	LF	SF	EA	%	Type	Positive	Friability
Asbestos	V9500	Wall   N/a   Mortar	11,33,34	A	0	390	0	0	Presumed Asbestos	Yes	NF
Asbestos	V9500	Wall     Vermiculite/concrete Block Walls	6,7,9,10,11,12,13,18,20,21,22,24,25,26,27,29 30,31,34,35,36,37,38,39,41,42	A	0	36875	0	0	Presumed Asbestos	Yes	F
Asbestos	V0000	Ceiling     Ceiling Tiles (lay-in)	6,7,18,20,21,24,25,26,27,30,31,35,41	A	0	5327	0	0	Non Asbestos	No	
Asbestos	V0000	Ceiling     Ceiling Tiles (glue-on)	25,36,41	A	0	200	0	100	Non Asbestos	No	
Asbestos	V0000	Ceiling   N/a   Concrete (poured)	42	A	0	0	0	400	Non Asbestos	No	
Asbestos	V0000	Ceiling   Not Found   N/a	1,3,5,12,14,15,16,17,22,24	A	0	6225	0	0	Non Asbestos	No	
Asbestos	V0000	Duct   Not Found   N/a	1,2,3,4,5,6,8,9,10,11,12,13,14,15,16,17,18 19,22,26,27,28,29,30,31,34,35,36,37,38,39,40 41,42,44	A	0	0	0	0	Non Asbestos	No	
Asbestos	V0000	Duct   Unidentified Duct   Not Insulated	7,20,21,24,25	A	0	0	0	0	Non Asbestos	No	
Asbestos	V0000	Floor   N/a   Carpet	22,26	A	0	0	0	0	Non Asbestos	No	
Asbestos	V0000	Floor   N/a   Concrete (poured)	9,42	A	0	0	0	400	Non Asbestos	No	
Asbestos	V0000	Floor   N/a   Vinyl Floor Tile And Mastic	12,17,22,24,25	A	0	3359	0	0	Non Asbestos	No	
Asbestos	V0000	Mechanical Equipment   Not Found   N/a	1,2,3,4,5,6,7,8,10,11,12,13,14,15,16,17,18 19,20,21,22,24,25,26,27,28,29,30,31,34,35,36 37,38,39,40,41,42,44	A	0	0	0	0	Non Asbestos	No	
Asbestos	V0000	Mechanical Equipment   Boiler One, Boiler Two, Breech One, Domestic Hot Water Tank   Not Insulated	9	A	0	0	0	0	Non Asbestos	No	
Asbestos	V0000	Piping   Unidentified Pipe, N/a, Domestic Cold Water   Fibreglass	7,9,20,21,24,32,33,34,35,36,37,38,39,40,41 42	A	340	0	0	0	Non Asbestos	No	
Asbestos	V0000	Piping   Not Found   N/a	1,2,3,4,5,6,10,11,12,13,14,15,16,17,18,19,22 25,26,27,28,30,31,35,44	A	0	0	0	0	Non Asbestos	No	
Asbestos	V0000	Piping   Unidentified Pipe, Domestic Cold Water   Not Insulated	8,29	A	0	0	0	0	Non Asbestos	No	
Asbestos	V0000	Structure   Not Found, Not Accessible   N/a	2,8,9,10,11,13,19,25,26,27,30,32,33,41,42,44	A	0	0	0	0	Non Asbestos	No	
Asbestos	V0000	Structure   Beam   Steel	28,29,31,34,35,36,37,38,39,40	A	0	0	0	0	Non Asbestos	No	
Asbestos	V0000	Structure   Beam, Deck   Wood	1,3,4,5,6,7,12,14,15,16,17,18,20,21,22,24	A	0	0	0	0	Non Asbestos	No	
Asbestos	V0000	Wall   N/a   Ceramic Tiles	10	A	0	0	0	0	Non Asbestos	No	
Asbestos	V0000	Wall   N/a   Concrete (poured)	42	A	0	0	0	0	Non	No	



HAZMAT	Sample No	System/Component/Material/Sample Description	Locations	Bldg. Phase	LF	SF	EA	%	Type	Positive	Friability
									Asbestos		
Asbestos	V0000	Wall   N/a   Masonry	1,2,3,4,5,6,7,8,9,10,11,12,13,14,15,16,17,18 19,20,21,22,24,25,27,28,29,30,31,32,33,34,35 36,37,38,39,40,41,44	A	0	182	0	0	Non Asbestos	No	
Paint	L0001	Wall   Concrete (poured)   White Paint On Masonry	8	A	0	0	0	0	Lead (High)	Yes	-
Paint	L0002	Structure   Wood   Blue Paint On Door	8	A	0	0	0	0	Lead (Low)	Yes	-
PCB	P0001	Caulking   Brown Caulking On Door Frame	8	A	0	0	0	0	-	No	-
PCB	P0002	Caulking   Grey Caulking On Door Frame	44	A	0	0	0	0	-	No	-

## Legend:

Sample number		Units			
S####	Asbestos sample collected	SF	Square feet	NF	Non Friable material.
L####	Paint sample collected	LF	Linear feet	F	Friable material
P####	PCB sample collected	EA	Each	PF	Potentially Friable material
M####	Mould sample collected	%	Percentage		
V####	Material visually similar to numbered sample collected				
V0000	Known non Hazardous Material				
V9000	Material is visually identified as Hazardous Material				
V9500	Material is presumed to be Hazardous Material				
[Loc. No.]	Abated Material				

**APPENDIX VI**  
**HMIS All Data Report**

# ALL DATA REPORT

**Client:** DCDSB  
**Location:** #1 : Classroom 12  
**Survey Date:** 2022-03-11

**Site:** 1324 Oxford Street, Oshawa, ON  
**Floor:** NA

**Building Name:** Monsignor Philip Coffey  
**Room #:** 12  
**Last Re-Assessment:** 0000-00-00

**Area (sqft):** 840

ASBESTOS																
System	Component	Material	Item	Covering	A*	V*	AP*	Good	Fair	Poor	Unit	Sample	Asbestos Type	Amount	Hazard	Friable
Ceiling	Not Found	N/A	Not Applicable	N/A	C	Y		840			SF	V0000	Non-Asbestos		None	
Duct	Not Found	N/A	Not Applicable	N/A								V0000	Non-Asbestos		None	
Floor <sup>1</sup>	N/a	Vinyl Floor Tile and Mastic	Not Applicable		A	Y		840(7)			SF	S0001	Chrysotile	5-10%	Confirmed Asbestos	NF
Mechanical Equipment	Not Found	N/A	Not Applicable	N/A								V0000	Non-Asbestos		None	
Other		Caulking, Brown caulking on door frame			A	Y		10(7)			LF	V0026	Chrysotile	0.5-5%	Confirmed Asbestos	NF
Piping	Not Found	N/A	Not Applicable	N/A								V0000	Non-Asbestos		None	
Structure	Beam, Deck	Wood	Not Applicable	N/A								V0000	Non-Asbestos		None	
Wall		Vermiculite/concrete block walls, Vermiculite			D	N		1750(7)			SF	S0029A	Libby Amphibole Detected	0.5-5%	Confirmed Asbestos	F
Wall	N/a	Masonry	Not Applicable	N/A								V0000	Non-Asbestos		None	

1 - 12 x 12 green with streaks

# ALL DATA REPORT

**Client:** DCDSB  
**Location:** #2 : Vestibule  
**Survey Date:** 2022-03-11

**Site:** 1324 Oxford Street, Oshawa, ON  
**Floor:** NA

**Building Name:** Monsignor Philip Coffey  
**Room #:**  
**Last Re-Assessment:** 0000-00-00

**Area (sqft):** 91

ASBESTOS																
System	Component	Material	Item	Covering	A*	V*	AP*	Good	Fair	Poor	Unit	Sample	Asbestos Type	Amount	Hazard	Friable
Ceiling	N/a	Plaster	Not Applicable	N/A	C	Y		91			SF	V0005	None Detected	N.D.	None	
Duct	Not Found	N/A	Not Applicable	N/A								V0000	Non-Asbestos		None	
Floor	N/a	Mortar	Not Applicable	Ceramic Tiles	D	N		91(7)			SF	V9500	Presumed Asbestos		Presumed Asbestos	NF
Mechanical Equipment	Not Found	N/A	Not Applicable	N/A								V0000	Non-Asbestos		None	
Other		Caulking, Grey caulking			A	Y		10			LF	S0028A	None Detected	N.D.	None	
Piping	Not Found	N/A	Not Applicable	N/A								V0000	Non-Asbestos		None	
Structure	Not Found	N/A	Not Applicable	N/A								V0000	Non-Asbestos		None	
Wall		Vermiculite/concrete block walls			D	N		250(7)			SF	V9000	Confirmed Asbestos		Confirmed Asbestos	F
Wall	N/a	Masonry	Not Applicable	N/A	A	Y		91			SF	V0000	Non-Asbestos		None	

# ALL DATA REPORT

**Client:** DCDSB  
**Location:** #3 : Classroom 11  
**Survey Date:** 2022-03-11

**Site:** 1324 Oxford Street, Oshawa, ON  
**Floor:** NA

**Building Name:** Monsignor Philip Coffey  
**Room #:** 11  
**Last Re-Assessment:** 0000-00-00

**Area (sqft):** 812

ASBESTOS																
System	Component	Material	Item	Covering	A*	V*	AP*	Good	Fair	Poor	Unit	Sample	Asbestos Type	Amount	Hazard	Friable
Ceiling	Not Found	N/A	Not Applicable	N/A	C	Y		812			SF	V0000	Non-Asbestos		None	
Duct	Not Found	N/A	Not Applicable	N/A								V0000	Non-Asbestos		None	
Floor	N/a	Vinyl Floor Tile and Mastic	Not Applicable	N/A	A	Y		812			SF	S0003	None Detected	N.D.	None	
Mechanical Equipment	Not Found	N/A	Not Applicable	N/A								V0000	Non-Asbestos		None	
Other		Caulking, Brown caulking on door frame			A	Y		10(7)			LF	V0026	Chrysotile	0.5-5%	Confirmed Asbestos	NF
Piping	Not Found	N/A	Not Applicable	N/A								V0000	Non-Asbestos		None	
Structure	Beam, Deck	Wood	Not Applicable	N/A								V0000	Non-Asbestos		None	
Wall		Vermiculite/concrete block walls			D	N		1750(7)			SF	V9000	Confirmed Asbestos		Confirmed Asbestos	F
Wall	N/a	Masonry	Not Applicable	N/A								V0000	Non-Asbestos		None	

## ALL DATA REPORT

**Client:** DCDSB  
**Location:** #4 : Classroom 10  
**Survey Date:** 2022-03-11

**Site:** 1324 Oxford Street, Oshawa, ON  
**Floor:** NA

**Building Name:** Monsignor Philip Coffey  
**Room #:** 10  
**Last Re-Assessment:** 0000-00-00

**Area (sqft):** 812

ASBESTOS																
System	Component	Material	Item	Covering	A*	V*	AP*	Good	Fair	Poor	Unit	Sample	Asbestos Type	Amount	Hazard	Friable
Ceiling		None Found	Not Applicable													
Duct	Not Found	N/A	Not Applicable	N/A								V0000	Non-Asbestos		None	
Floor	N/a	Vinyl Floor Tile and Mastic	Not Applicable	N/A	A	Y		812			SF	S0003	None Detected	N.D.	None	
Mechanical Equipment	Not Found	N/A	Not Applicable	N/A								V0000	Non-Asbestos		None	
Other		Caulking, Brown caulking on door frame			A	Y		10(7)			LF	V0026	Chrysotile	0.5-5%	Confirmed Asbestos	NF
Piping	Not Found	N/A	Not Applicable	N/A								V0000	Non-Asbestos		None	
Structure	Beam, Deck	Wood	Not Applicable	N/A								V0000	Non-Asbestos		None	
Wall		Vermiculite/concrete block walls			D	N		1750(7)			SF	V9000	Confirmed Asbestos		Confirmed Asbestos	F
Wall	N/a	Masonry	Not Applicable	N/A								V0000	Non-Asbestos		None	

# ALL DATA REPORT

**Client:** DCDSB  
**Location:** #5 : Classroom 9  
**Survey Date:** 2022-03-11

**Site:** 1324 Oxford Street, Oshawa, ON  
**Floor:** NA

**Building Name:** Monsignor Philip Coffey  
**Room #:** 9  
**Last Re-Assessment:** 0000-00-00

**Area (sqft):** 812

ASBESTOS																
System	Component	Material	Item	Covering	A*	V*	AP*	Good	Fair	Poor	Unit	Sample	Asbestos Type	Amount	Hazard	Friable
Ceiling	Not Found	N/A	Not Applicable	N/A	C	Y		812			SF	V0000	Non-Asbestos		None	
Duct	Not Found	N/A	Not Applicable	N/A								V0000	Non-Asbestos		None	
Floor	N/a	Vinyl Floor Tile and Mastic	Not Applicable	N/A	A	Y		812			SF	S0003	None Detected	N.D.	None	
Mechanical Equipment	Not Found	N/A	Not Applicable	N/A								V0000	Non-Asbestos		None	
Other		Caulking, Brown caulking on door frame			A	Y		10(7)			LF	V0026	Chrysotile	0.5-5%	Confirmed Asbestos	NF
Piping	Not Found	N/A	Not Applicable	N/A								V0000	Non-Asbestos		None	
Structure	Beam, Deck	Wood	Not Applicable	N/A								V0000	Non-Asbestos		None	
Wall		Vermiculite/concrete block walls			D	N		1750(7)			SF	V9000	Confirmed Asbestos		Confirmed Asbestos	F
Wall	N/a	Drywall and joint compound	Not Applicable	N/A	A	Y		110(7)			SF	V9500	Presumed Asbestos		Presumed Asbestos	NF
Wall	N/a	Masonry	Not Applicable	N/A								V0000	Non-Asbestos		None	



# ALL DATA REPORT

**Client:** DCDSB  
**Location:** #6 : Corridor  
**Survey Date:** 2022-03-11

**Site:** 1324 Oxford Street, Oshawa, ON  
**Floor:** NA

**Building Name:** Monsignor Philip Coffey  
**Room #:**  
**Last Re-Assessment:** 0000-00-00

**Area (sqft):** 96

ASBESTOS																
System	Component	Material	Item	Covering	A*	V*	AP*	Good	Fair	Poor	Unit	Sample	Asbestos Type	Amount	Hazard	Friable
Ceiling		Ceiling Tiles (lay-in)	Not Applicable	N/A	C	Y		96			SF	V0000	Non-Asbestos		None	
Duct	Not Found	N/A	Not Applicable	N/A								V0000	Non-Asbestos		None	
Floor	N/a	Mortar	Not Applicable	Ceramic Tiles	D	N		96(7)			SF	V9500	Presumed Asbestos		Presumed Asbestos	NF
Mechanical Equipment	Not Found	N/A	Not Applicable	N/A								V0000	Non-Asbestos		None	
Piping	Not Found	N/A	Not Applicable	N/A								V0000	Non-Asbestos		None	
Structure	Beam, Deck	Wood	Not Applicable	N/A								V0000	Non-Asbestos		None	
Wall		Vermiculite/concrete block walls			D	N		250(7)			SF	V9500	Presumed Asbestos		Presumed Asbestos	F
Wall	N/a	Masonry	Not Applicable	N/A								V0000	Non-Asbestos		None	

AT-001 painted black.

# ALL DATA REPORT

**Client:** DCDSB  
**Location:** #7 : Corridor  
**Survey Date:** 2022-03-11

**Site:** 1324 Oxford Street, Oshawa, ON  
**Floor:** NA

**Building Name:** Monsignor Philip Coffey  
**Room #:**  
**Last Re-Assessment:** 0000-00-00

**Area (sqft):** 696

ASBESTOS																
System	Component	Material	Item	Covering	A*	V*	AP*	Good	Fair	Poor	Unit	Sample	Asbestos Type	Amount	Hazard	Friable
Ceiling		Ceiling Tiles (lay-in)	Not Applicable	N/A	C	Y		696			SF	V0000	Non-Asbestos		None	
Duct	Unidentified Duct	Not Insulated	Not Applicable	N/A								V0000	Non-Asbestos		None	
Floor	N/a	Mortar	Not Applicable	Ceramic Tiles	D	N		696(7)			SF	V9500	Presumed Asbestos		Presumed Asbestos	NF
Mechanical Equipment	Not Found	N/A	Not Applicable	N/A								V0000	Non-Asbestos		None	
Piping	Unidentified Pipe	Fibreglass	Not Applicable	N/A	C	N						V0000	Non-Asbestos		None	
Structure	Beam, Deck	Wood	Not Applicable	N/A								V0000	Non-Asbestos		None	
Wall		Vermiculite/concrete block walls			D	N		1750(7)			SF	V9500	Presumed Asbestos		Presumed Asbestos	F
Wall	N/a	Masonry	Not Applicable	N/A								V0000	Non-Asbestos		None	

# ALL DATA REPORT

**Client:** DCDSB  
**Location:** #8 : Girls Washroom/Change room/Shower  
**Survey Date:** 2022-03-11

**Site:** 1324 Oxford Street, Oshawa, ON  
**Floor:** NA

**Building Name:** Monsignor Philip Coffey  
**Room #:**  
**Area (sqft):** 1126  
**Last Re-Assessment:** 0000-00-00

ASBESTOS																
System	Component	Material	Item	Covering	A*	V*	AP*	Good	Fair	Poor	Unit	Sample	Asbestos Type	Amount	Hazard	Friable
Ceiling		Plaster, Plaster on ceiling			C	Y						S0027ABC	None Detected	N.D.	None	
Ceiling	N/a	Plaster	Not Applicable	N/A	C	Y		1126			SF	V0005	None Detected	N.D.	None	
Duct	Not Found	N/A	Not Applicable	N/A								V0000	Non-Asbestos		None	
Floor		Mortar, Thinset under ceramic tile	Not Applicable	Ceramic Tiles	D	N		1126(7)			SF	S0024A	Chrysotile	0.5-5%	Confirmed Asbestos	NF
Floor		Mortar, Thinset under ceramic tile		Ceramic Tiles	D	N						S0024BC	Chrysotile	0.5-5%	Confirmed Asbestos	NF
Mechanical Equipment	Not Found	N/A	Not Applicable	N/A								V0000	Non-Asbestos		None	
Other		Caulking, Brown caulking on door frame			A	Y		10(7)			LF	S0026ABC	Chrysotile	0.5-5%	Confirmed Asbestos	NF
Piping	Domestic Cold Water	Not Insulated			C	N						V0000	Non-Asbestos		None	
Piping <sup>1</sup>	Domestic Hot Water	Parging Cement	Fitting		C	N		6(7)			EA	V9500	Presumed Asbestos		Presumed Asbestos	F
Structure	Not Found	N/A	Not Applicable	N/A								V0000	Non-Asbestos		None	
Wall		Paint, White paint on masonry block			A	Y		1126			SF	S0023ABC	None Detected	N.D.	None	
Wall		Mortar, Thinset under ceramic tile		Ceramic Tiles	A	Y		800			SF	S0025ABC	None Detected	N.D.	None	
Wall	N/a	Masonry	Not Applicable	N/A								V0000	Non-Asbestos		None	

1 - Unreachable due to plaster ceiling

**Client:** DCDSB  
**Location:** #8 : Girls Washroom/Change room/Shower  
**Survey Date:** 2022-03-11

**Site:** 1324 Oxford Street, Oshawa, ON  
**Floor:** NA

**Building Name:** Monsignor Philip Coffey  
**Room #:**  
**Area (sqft):** 1126  
**Last Re-Assessment:** 0000-00-00

PAINT								
System	Item	Good	Poor	Unit	Sample	Sample Description	Amount	Hazard
Wall	Concrete (poured)				L0001	White paint on masonry	Pb: 0.27 %	Lead (High)
Structure	Wood				L0002	Blue paint on door	Pb: 0.015 %	Lead (Low)

**Client:** DCDSB  
**Location:** #8 : Girls Washroom/Change room/Shower  
**Survey Date:** 2022-03-11

**Site:** 1324 Oxford Street, Oshawa, ON  
**Floor:** NA

**Building Name:** Monsignor Philip Coffey  
**Room #:**  
**Area (sqft):** 1126  
**Last Re-Assessment:** 0000-00-00

PCB						
Component	Quantity	Unit	Sample	Sample Description	Amount	PCB
CAULKING			P0001	Brown caulking on door frame	48 mg/kg	No

## ALL DATA REPORT

**Client:** DCDSB  
**Location:** #9 : Boiler Room  
**Survey Date:** 2022-03-11

**Site:** 1324 Oxford Street, Oshawa, ON  
**Floor:** NA

**Building Name:** Monsignor Philip Coffey  
**Room #:**  
**Last Re-Assessment:** 0000-00-00

**Area (sqft):** 430

ASBESTOS																
System	Component	Material	Item	Covering	A*	V*	AP*	Good	Fair	Poor	Unit	Sample	Asbestos Type	Amount	Hazard	Friable
Ceiling	N/a	Plaster	Not Applicable	N/A	C	Y		430			SF	S0005	None Detected	N.D.	None	
Duct	Not Found	N/A	Not Applicable	N/A								V0000	Non-Asbestos		None	
Floor	N/a	Concrete (poured)	Not Applicable	N/A								V0000	Non-Asbestos		None	
Mechanical Equipment	Boiler One	Not Insulated	Not Applicable	N/A								V0000	Non-Asbestos		None	
Mechanical Equipment	Boiler Two	Not Insulated	Not Applicable	N/A								V0000	Non-Asbestos		None	
Mechanical Equipment	Breech One	Not Insulated	Not Applicable	N/A								V0000	Non-Asbestos		None	
Mechanical Equipment	Breech One	Not Insulated	Not Applicable	N/A								V0000	Non-Asbestos		None	
Mechanical Equipment	Domestic Hot Water Tank	Not Insulated	Not Applicable	N/A								V0000	Non-Asbestos		None	
Piping	N/a	Fibreglass	Straight	N/A	C	Y						V0000	Non-Asbestos		None	
Structure	Not Found	N/A	Not Applicable	N/A								V0000	Non-Asbestos		None	
Wall		Vermiculite/concrete block walls			D	N		1250(7)			SF	V9500	Presumed Asbestos		Presumed Asbestos	F
Wall	N/a	Masonry	Not Applicable	N/A								V0000	Non-Asbestos		None	

# ALL DATA REPORT

**Client:** DCDSB  
**Location:** #10 : Boys Washroom/Change Room/Shower  
**Survey Date:** 2022-03-11

**Site:** 1324 Oxford Street, Oshawa, ON  
**Floor:** NA

**Building Name:** Monsignor Philip Coffey  
**Room #:**  
**Last Re-Assessment:** 0000-00-00

**Area (sqft):** 1126

ASBESTOS																
System	Component	Material	Item	Covering	A*	V*	AP*	Good	Fair	Poor	Unit	Sample	Asbestos Type	Amount	Hazard	Friable
Ceiling	N/a	Plaster	Not Applicable	N/A	C	Y		1126			SF	V0005	None Detected	N.D.	None	
Ceiling	N/a	Plaster	Not Applicable	N/A	C	Y		1126			SF	V0005	None Detected	N.D.	None	
Duct	Not Found	N/A	Not Applicable	N/A								V0000	Non-Asbestos		None	
Floor	N/a	Mortar	Not Applicable	Ceramic Tiles	D	N		1126(7)			SF	V9500	Presumed Asbestos		Presumed Asbestos	NF
Mechanical Equipment	Not Found	N/A	Not Applicable	N/A								V0000	Non-Asbestos		None	
Piping	Not Found	N/A	Not Applicable	N/A								V0000	Non-Asbestos		None	
Structure	Not Found	N/A	Not Applicable	N/A								V0000	Non-Asbestos		None	
Wall		Vermiculite/concrete block walls			D	N		2500(7)			SF	V9500	Presumed Asbestos		Presumed Asbestos	F
Wall	N/a	Masonry	Not Applicable	N/A								V0000	Non-Asbestos		None	
Wall	N/a	Ceramic Tiles	Not Applicable	N/A								V0000	Non-Asbestos		None	

No access to shower room. No access to ceiling, hatch was stuck.

# ALL DATA REPORT

**Client:** DCDSB  
**Location:** #11 : Office and Washroom  
**Survey Date:** 2022-03-11

**Site:** 1324 Oxford Street, Oshawa, ON  
**Floor:** NA

**Building Name:** Monsignor Philip Coffey  
**Room #:**  
**Last Re-Assessment:** 0000-00-00

**Area (sqft):** 160

ASBESTOS																
System	Component	Material	Item	Covering	A*	V*	AP*	Good	Fair	Poor	Unit	Sample	Asbestos Type	Amount	Hazard	Friable
Ceiling	N/a	Plaster	Not Applicable	N/A	C	Y		160			SF	V0005	None Detected	N.D.	None	
Duct	Not Found	N/A	Not Applicable	N/A								V0000	Non-Asbestos		None	
Floor	N/a	Mortar	Not Applicable	Ceramic Tiles	D	N		160(7)			SF	V9500	Presumed Asbestos		Presumed Asbestos	NF
Mechanical Equipment	Not Found	N/A	Not Applicable	N/A								V0000	Non-Asbestos		None	
Piping	Not Found	N/A	Not Applicable	N/A								V0000	Non-Asbestos		None	
Structure	Not Found	N/A	Not Applicable	N/A								V0000	Non-Asbestos		None	
Wall		Vermiculite/concrete block walls			D	N		500(7)			SF	V9500	Presumed Asbestos		Presumed Asbestos	F
Wall	N/a	Masonry	Not Applicable	N/A								V0000	Non-Asbestos		None	
Wall	N/a	Mortar	Not Applicable	Ceramic Tiles	D	N		160(7)			SF	V9500	Presumed Asbestos		Presumed Asbestos	NF

# ALL DATA REPORT

**Client:** DCDSB  
**Location:** #12 : Gym  
**Survey Date:** 2022-03-11

**Site:** 1324 Oxford Street, Oshawa, ON  
**Floor:** NA

**Building Name:** Monsignor Philip Coffey  
**Room #:**  
**Last Re-Assessment:** 0000-00-00

**Area (sqft):** 3025

ASBESTOS																
System	Component	Material	Item	Covering	A*	V*	AP*	Good	Fair	Poor	Unit	Sample	Asbestos Type	Amount	Hazard	Friable
Ceiling		N/A			A	Y		3025			SF	V0000	Non-Asbestos		None	
Duct	Not Found	N/A	Not Applicable	N/A								V0000	Non-Asbestos		None	
Floor	N/a	Vinyl Floor Tile and Mastic	Not Applicable	N/A	A	Y		2118			SF	V0003	None Detected	N.D.	None	
Floor	N/a	Vinyl Floor Tile and Mastic	Not Applicable	N/A	A	Y		907			SF	V0000	Non-Asbestos		None	
Mechanical Equipment	Not Found	N/A	Not Applicable	N/A								V0000	Non-Asbestos		None	
Piping	Not Found	N/A	Not Applicable	N/A								V0000	Non-Asbestos		None	
Structure	Beam, Deck	Wood	Not Applicable	N/A								V0000	Non-Asbestos		None	
Wall		Vermiculite/concrete block walls			D	N		5000(7)			SF	V9500	Presumed Asbestos		Presumed Asbestos	F
Wall	N/a	Masonry	Not Applicable	N/A	A	Y						V0000	Non-Asbestos		None	

F2 - Replacement tile.

# ALL DATA REPORT

**Client:** DCDSB  
**Location:** #13 : Gym storage  
**Survey Date:** 2022-03-11

**Site:** 1324 Oxford Street, Oshawa, ON  
**Floor:** NA

**Building Name:** Monsignor Philip Coffey  
**Room #:**  
**Last Re-Assessment:** 0000-00-00

**Area (sqft):** 160

ASBESTOS																
System	Component	Material	Item	Covering	A*	V*	AP*	Good	Fair	Poor	Unit	Sample	Asbestos Type	Amount	Hazard	Friable
Ceiling	N/a	Plaster	Not Applicable	N/A	C	Y		160			SF	V0005	None Detected	N.D.	None	
Duct	Not Found	N/A	Not Applicable	N/A								V0000	Non-Asbestos		None	
Floor	N/a	Mortar	Not Applicable	Ceramic Tiles	D	N		160(7)			SF	V9500	Presumed Asbestos		Presumed Asbestos	NF
Mechanical Equipment	Not Found	N/A	Not Applicable	N/A								V0000	Non-Asbestos		None	
Piping	Not Found	N/A	Not Applicable	N/A								V0000	Non-Asbestos		None	
Structure	Not Found	N/A	Not Applicable	N/A								V0000	Non-Asbestos		None	
Wall		Vermiculite/concrete block walls			D	N		500(7)			SF	V9500	Presumed Asbestos		Presumed Asbestos	F
Wall	N/a	Masonry	Not Applicable	N/A								V0000	Non-Asbestos		None	



# ALL DATA REPORT

**Client:** DCDSB  
**Location:** #14 : Classroom 16  
**Survey Date:** 2022-03-11

**Site:** 1324 Oxford Street, Oshawa, ON  
**Floor:** NA

**Building Name:** Monsignor Philip Coffey  
**Room #:** 16  
**Last Re-Assessment:** 0000-00-00

**Area (sqft):** 840

ASBESTOS																
System	Component	Material	Item	Covering	A*	V*	AP*	Good	Fair	Poor	Unit	Sample	Asbestos Type	Amount	Hazard	Friable
Ceiling	Not Found	N/A	Not Applicable	N/A								V0000	Non-Asbestos		None	
Duct	Not Found	N/A	Not Applicable	N/A								V0000	Non-Asbestos		None	
Floor	N/a	Vinyl Floor Tile and Mastic	Not Applicable	N/A	A	Y		835(7)			SF	S0001	Chrysotile	5-10%	Confirmed Asbestos	NF
Floor	N/a	Vinyl Floor Tile and Mastic	Not Applicable	N/A	A	Y		5			SF	V0003	None Detected	N.D.	None	
Mechanical Equipment	Not Found	N/A	Not Applicable	N/A								V0000	Non-Asbestos		None	
Other		Caulking, Brown caulking on door frame			A	Y		10(7)			LF	V0026	Chrysotile	0.5-5%	Confirmed Asbestos	NF
Piping	Not Found	N/A	Not Applicable	N/A								V0000	Non-Asbestos		None	
Structure	Beam, Deck	Wood	Not Applicable	N/A								V0000	Non-Asbestos		None	
Wall		Vermiculite/concrete block walls			D	N		1950(7)			SF	V9000	Confirmed Asbestos		Confirmed Asbestos	F
Wall	N/a	Masonry	Not Applicable	N/A								V0000	Non-Asbestos		None	

# ALL DATA REPORT

**Client:** DCDSB  
**Location:** #15 : Classroom 15  
**Survey Date:** 2022-03-11

**Site:** 1324 Oxford Street, Oshawa, ON  
**Floor:** NA

**Building Name:** Monsignor Philip Coffey  
**Room #:** 15  
**Last Re-Assessment:** 0000-00-00

**Area (sqft):** 812

ASBESTOS																
System	Component	Material	Item	Covering	A*	V*	AP*	Good	Fair	Poor	Unit	Sample	Asbestos Type	Amount	Hazard	Friable
Ceiling	Not Found	N/A	Not Applicable	N/A								V0000	Non-Asbestos		None	
Duct	Not Found	N/A	Not Applicable	N/A								V0000	Non-Asbestos		None	
Floor	N/a	Vinyl Floor Tile and Mastic	Not Applicable	N/A	A	Y		812			SF	V0003	None Detected	N.D.	None	
Mechanical Equipment	Not Found	N/A	Not Applicable	N/A								V0000	Non-Asbestos		None	
Other		Caulking, Brown caulking on door frame			A	Y		10(7)			LF	V0026	Chrysotile	0.5-5%	Confirmed Asbestos	NF
Piping	Not Found	N/A	Not Applicable	N/A								V0000	Non-Asbestos		None	
Structure	Beam, Deck	Wood	Not Applicable	N/A								V0000	Non-Asbestos		None	
Wall		Vermiculite/concrete block walls			D	N		1950(7)			SF	V9000	Confirmed Asbestos		Confirmed Asbestos	F
Wall	N/a	Masonry	Not Applicable	N/A								V0000	Non-Asbestos		None	

# ALL DATA REPORT

**Client:** DCDSB  
**Location:** #16 : Classroom 14  
**Survey Date:** 2022-03-11

**Site:** 1324 Oxford Street, Oshawa, ON  
**Floor:** NA

**Building Name:** Monsignor Philip Coffey  
**Room #:** 14  
**Last Re-Assessment:** 0000-00-00

**Area (sqft):** 812

ASBESTOS																
System	Component	Material	Item	Covering	A*	V*	AP*	Good	Fair	Poor	Unit	Sample	Asbestos Type	Amount	Hazard	Friable
Ceiling	Not Found	N/A	Not Applicable	N/A								V0000	Non-Asbestos		None	
Duct	Not Found	N/A	Not Applicable	N/A								V0000	Non-Asbestos		None	
Floor	N/a	Vinyl Floor Tile and Mastic	Not Applicable	N/A	A	Y		812			SF	V0003	None Detected	N.D.	None	
Mechanical Equipment	Not Found	N/A	Not Applicable	N/A								V0000	Non-Asbestos		None	
Other		Caulking, Brown caulking on door frame			A	Y		10(7)			LF	V0026	Chrysotile	0.5-5%	Confirmed Asbestos	NF
Piping	Not Found	N/A	Not Applicable	N/A								V0000	Non-Asbestos		None	
Structure	Beam, Deck	Wood	Not Applicable	N/A								V0000	Non-Asbestos		None	
Wall		Vermiculite/concrete block walls			D	N		1950(7)			SF	V9000	Confirmed Asbestos		Confirmed Asbestos	F
Wall	N/a	Masonry	Not Applicable	N/A								V0000	Non-Asbestos		None	

# ALL DATA REPORT

**Client:** DCDSB  
**Location:** #17 : Classroom 13  
**Survey Date:** 2022-03-11

**Site:** 1324 Oxford Street, Oshawa, ON  
**Floor:** NA

**Building Name:** Monsignor Philip Coffey  
**Room #:** 13  
**Last Re-Assessment:** 0000-00-00

**Area (sqft):** 812

ASBESTOS																
System	Component	Material	Item	Covering	A*	V*	AP*	Good	Fair	Poor	Unit	Sample	Asbestos Type	Amount	Hazard	Friable
Ceiling	Not Found	N/A	Not Applicable	N/A								V0000	Non-Asbestos		None	
Duct	Not Found	N/A	Not Applicable	N/A								V0000	Non-Asbestos		None	
Floor	N/a	Vinyl Floor Tile and Mastic	Not Applicable	N/A	A	Y		812			SF	V0000	Non-Asbestos		None	
Mechanical Equipment	Not Found	N/A	Not Applicable	N/A								V0000	Non-Asbestos		None	
Other		Caulking, Brown caulking on door frame			A	Y		10(7)			LF	V0026	Chrysotile	0.5-5%	Confirmed Asbestos	NF
Piping	Not Found	N/A	Not Applicable	N/A								V0000	Non-Asbestos		None	
Structure	Beam, Deck	Wood	Not Applicable	N/A								V0000	Non-Asbestos		None	
Wall		Vermiculite/concrete block walls			D	N		1950(7)			SF	V9000	Confirmed Asbestos		Confirmed Asbestos	F
Wall	N/a	Masonry	Not Applicable	N/A								V0000	Non-Asbestos		None	

2018 New Floor

# ALL DATA REPORT

**Client:** DCDSB  
**Location:** #18 : Corridor  
**Survey Date:** 2022-03-11

**Site:** 1324 Oxford Street, Oshawa, ON  
**Floor:** NA

**Building Name:** Monsignor Philip Coffey  
**Room #:**  
**Last Re-Assessment:** 0000-00-00

**Area (sqft):** 80

ASBESTOS																
System	Component	Material	Item	Covering	A*	V*	AP*	Good	Fair	Poor	Unit	Sample	Asbestos Type	Amount	Hazard	Friable
Ceiling		Ceiling Tiles (lay-in)	Not Applicable	N/A	C	Y						V0000	Non-Asbestos		None	
Duct	Not Found	N/A	Not Applicable	N/A								V0000	Non-Asbestos		None	
Floor	N/a	Mortar	Not Applicable	Ceramic Tiles	D	N		80(7)			SF	V9500	Presumed Asbestos		Presumed Asbestos	NF
Mechanical Equipment	Not Found	N/A	Not Applicable	N/A								V0000	Non-Asbestos		None	
Piping	Not Found	N/A	Not Applicable	N/A								V0000	Non-Asbestos		None	
Structure	Beam, Deck	Wood	Not Applicable	N/A								V0000	Non-Asbestos		None	
Wall		Vermiculite/concrete block walls			D	N		250(7)			SF	V9500	Presumed Asbestos		Presumed Asbestos	F
Wall	N/a	Masonry	Not Applicable	N/A								V0000	Non-Asbestos		None	

# ALL DATA REPORT

**Client:** DCDSB  
**Location:** #19 : Vestibule  
**Survey Date:** 2022-03-11

**Site:** 1324 Oxford Street, Oshawa, ON  
**Floor:** NA

**Building Name:** Monsignor Philip Coffey  
**Room #:**  
**Last Re-Assessment:** 0000-00-00

**Area (sqft):** 91

ASBESTOS																
System	Component	Material	Item	Covering	A*	V*	AP*	Good	Fair	Poor	Unit	Sample	Asbestos Type	Amount	Hazard	Friable
Ceiling	N/a	Plaster	Not Applicable	N/A	C	Y		91			SF	V0005	None Detected	N.D.	None	
Duct	Not Found	N/A	Not Applicable	N/A								V0000	Non-Asbestos		None	
Floor	N/a	Mortar	Not Applicable	Ceramic Tiles	D	N		91(7)			SF	V9500	Presumed Asbestos		Presumed Asbestos	NF
Mechanical Equipment	Not Found	N/A	Not Applicable	N/A								V0000	Non-Asbestos		None	
Other		Caulking, Grey caulking			A	Y		10			LF	V0028	None Detected	N.D.	None	
Piping	Not Found	N/A	Not Applicable	N/A								V0000	Non-Asbestos		None	
Structure	Not Found	N/A	Not Applicable	N/A								V0000	Non-Asbestos		None	
Wall		Vermiculite/concrete block walls, Vermiculite			D	N		250(7)			SF	V9000	Confirmed Asbestos		Confirmed Asbestos	F
Wall	N/a	Masonry	Not Applicable	N/A	A	Y						V0000	Non-Asbestos		None	

# ALL DATA REPORT

**Client:** DCDSB  
**Location:** #20 : Corridor  
**Survey Date:** 2022-03-11

**Site:** 1324 Oxford Street, Oshawa, ON  
**Floor:** NA

**Building Name:** Monsignor Philip Coffey  
**Room #:**  
**Last Re-Assessment:** 0000-00-00

**Area (sqft):** 696

ASBESTOS																
System	Component	Material	Item	Covering	A*	V*	AP*	Good	Fair	Poor	Unit	Sample	Asbestos Type	Amount	Hazard	Friable
Ceiling		Ceiling Tiles (lay-in)	Not Applicable	N/A	C	Y		696			SF	V0000	Non-Asbestos		None	
Duct	Unidentified Duct	Not Insulated	Not Applicable	N/A								V0000	Non-Asbestos		None	
Floor	N/a	Mortar	Not Applicable	Ceramic Tiles	D	N		696(7)			SF	V9500	Presumed Asbestos		Presumed Asbestos	NF
Mechanical Equipment	Not Found	N/A	Not Applicable	N/A								V0000	Non-Asbestos		None	
Piping	Unidentified Pipe	Fibreglass	Not Applicable	N/A	C	N						V0000	Non-Asbestos		None	
Structure	Beam, Deck	Wood	Not Applicable	N/A								V0000	Non-Asbestos		None	
Wall		Vermiculite/concrete block walls			D	N		1750(7)			SF	V9500	Presumed Asbestos		Presumed Asbestos	F
Wall	N/a	Masonry	Not Applicable	N/A								V0000	Non-Asbestos		None	

# ALL DATA REPORT

**Client:** DCDSB  
**Location:** #21 : Corridor  
**Survey Date:** 2022-03-11

**Site:** 1324 Oxford Street, Oshawa, ON  
**Floor:** NA

**Building Name:** Monsignor Philip Coffey  
**Room #:**  
**Last Re-Assessment:** 0000-00-00

**Area (sqft):** 1520

ASBESTOS																
System	Component	Material	Item	Covering	A*	V*	AP*	Good	Fair	Poor	Unit	Sample	Asbestos Type	Amount	Hazard	Friable
Ceiling		Ceiling Tiles (lay-in)	Not Applicable	N/A	C	Y		1520			SF	V0000	Non-Asbestos		None	
Duct	Unidentified Duct	Not Insulated	Not Applicable	N/A							%	V0000	Non-Asbestos		None	
Floor	N/a	Mortar	Not Applicable	Ceramic Tiles	D	N		1520(7)			SF	V9500	Presumed Asbestos		Presumed Asbestos	NF
Mechanical Equipment	Not Found	N/A	Not Applicable	N/A							%	V0000	Non-Asbestos		None	
Other		Caulking, Grey caulking			A	Y		10			LF	V0028	None Detected	N.D.	None	
Piping	Unidentified Pipe	Fibreglass	Not Applicable	N/A	C	N					LF	V0000	Non-Asbestos		None	
Structure	Beam, Deck	Wood	Not Applicable	N/A							%	V0000	Non-Asbestos		None	
Wall		Drywall and joint compound			A	Y		1000(7)			SF	V9500	Presumed Asbestos		Presumed Asbestos	NF
Wall		Vermiculite/concrete block walls			D	N		3750(7)			SF	V9500	Presumed Asbestos		Presumed Asbestos	F
Wall	N/a	Masonry	Not Applicable	N/A							SF	V0000	Non-Asbestos		None	



# ALL DATA REPORT

**Client:** DCDSB  
**Location:** #22 : Library  
**Survey Date:** 2022-03-11

**Site:** 1324 Oxford Street, Oshawa, ON  
**Floor:** NA

**Building Name:** Monsignor Philip Coffey  
**Room #:**  
**Last Re-Assessment:** 0000-00-00

**Area (sqft):** 2500

ASBESTOS																
System	Component	Material	Item	Covering	A*	V*	AP*	Good	Fair	Poor	Unit	Sample	Asbestos Type	Amount	Hazard	Friable
Ceiling	Not Found	N/A	Not Applicable	N/A							%	V0000	Non-Asbestos		None	
Duct	Not Found	N/A	Not Applicable	N/A							%	V0000	Non-Asbestos		None	
Floor		Mortar		Ceramic Tiles	D	N		350(7)			SF	V9500	Presumed Asbestos		Presumed Asbestos	NF
Floor	N/a	Vinyl Floor Tile and Mastic	Not Applicable	Carpet	D	N		840			SF	V0000	Non-Asbestos		None	
Floor	N/a	Carpet	Not Applicable	N/A	A	Y					SF	V0000	Non-Asbestos		None	
Mechanical Equipment	Not Found	N/A	Not Applicable	N/A							%	V0000	Non-Asbestos		None	
Piping	Not Found	N/A	Not Applicable	N/A							%	V0000	Non-Asbestos		None	
Structure	Beam, Deck	Wood	Not Applicable	N/A							%	V0000	Non-Asbestos		None	
Wall		Vermiculite/concrete block walls			D	N		1000(7)			SF	V9500	Presumed Asbestos		Presumed Asbestos	F
Wall	N/a	Masonry	Not Applicable	N/A							%	V0000	Non-Asbestos		None	

F1 - New vinyl floor tile.

# ALL DATA REPORT

**Client:** DCDSB  
**Location:** #24 : Staff Room  
**Survey Date:** 2022-03-11

**Site:** 1324 Oxford Street, Oshawa, ON  
**Floor:** NA

**Building Name:** Monsignor Philip Coffey  
**Room #:**  
**Last Re-Assessment:** 0000-00-00

**Area (sqft):** 781

ASBESTOS																
System	Component	Material	Item	Covering	A*	V*	AP*	Good	Fair	Poor	Unit	Sample	Asbestos Type	Amount	Hazard	Friable
Ceiling		Ceiling Tiles (lay-in)	Not Applicable	N/A	C	Y		45			SF	V0000	Non-Asbestos		None	
Ceiling		N/A			A	Y		736			SF	V0000	Non-Asbestos		None	
Duct	Unidentified Duct	Not Insulated	Not Applicable	N/A							%	V0000	Non-Asbestos		None	
Floor		Vinyl Floor Tile and Mastic	Not Applicable	N/A	A	Y		640			SF	V0000	Non-Asbestos		None	
Floor		Vinyl Floor Tile and Mastic	Not Applicable		A	Y		640			SF	S0008A	[None]	0.5-5%	[Abated]	
Floor	N/a	Mortar	Not Applicable	Ceramic Tiles	D	N		141(7)			SF	V9500	Presumed Asbestos		Presumed Asbestos	NF
Mechanical Equipment	Not Found	N/A	Not Applicable	N/A							%	V0000	Non-Asbestos		None	
Piping	Domestic Cold Water	Fibreglass	Not Applicable	N/A	C	N					LF	V0000	Non-Asbestos		None	
Structure	Beam, Deck	Wood	Not Applicable	N/A							%	V0000	Non-Asbestos		None	
Wall		Drywall and joint compound			A	Y		50(7)			SF	V9500	Presumed Asbestos		Presumed Asbestos	NF
Wall		Vermiculite/concrete block walls			D	N		500(7)			SF	V9500	Presumed Asbestos		Presumed Asbestos	F
Wall	N/a	Masonry	Not Applicable	N/A							%	V0000	Non-Asbestos		None	

F2 - New vinyl floor tile. W2 - drywall pipe chase.

# ALL DATA REPORT

**Client:** DCDSB  
**Location:** #25 : Meeting room  
**Survey Date:** 2022-03-11

**Site:** 1324 Oxford Street, Oshawa, ON  
**Floor:** NA

**Building Name:** Monsignor Philip Coffey  
**Room #:**  
**Last Re-Assessment:** 0000-00-00

**Area (sqft):** 160

ASBESTOS																
System	Component	Material	Item	Covering	A*	V*	AP*	Good	Fair	Poor	Unit	Sample	Asbestos Type	Amount	Hazard	Friable
Ceiling		Ceiling tiles (glue-on)	Not Applicable	N/A	C	N					SF	V0000	Non-Asbestos		None	
Ceiling		Ceiling Tiles (lay-in)	Not Applicable	N/A				80			SF	V0000	Non-Asbestos		None	
Duct		Not Insulated	Not Applicable	N/A							%	V0000	Non-Asbestos		None	
Floor	N/a	Vinyl Floor Tile and Mastic	Not Applicable	N/A	A	Y		160			SF	V0000	Non-Asbestos		None	
Mechanical Equipment	Not Found	N/A	Not Applicable	N/A							%	V0000	Non-Asbestos		None	
Piping	Not Found	N/A	Not Applicable	N/A							%	V0000	Non-Asbestos		None	
Structure	Not Found	N/A	Not Applicable	N/A							%	V0000	Non-Asbestos		None	
Wall		Vermiculite/concrete block walls			D	N		500(7)			SF	V9500	Presumed Asbestos		Presumed Asbestos	F
Wall	N/a	Masonry	Not Applicable	N/A							%	V0000	Non-Asbestos		None	

F - Blue

# ALL DATA REPORT

**Client:** DCDSB  
**Location:** #26 : Principal's Office  
**Survey Date:** 2022-03-11

**Site:** 1324 Oxford Street, Oshawa, ON  
**Floor:** NA

**Building Name:** Monsignor Philip Coffey  
**Room #:**  
**Last Re-Assessment:** 0000-00-00

**Area (sqft):** 160

ASBESTOS																
System	Component	Material	Item	Covering	A*	V*	AP*	Good	Fair	Poor	Unit	Sample	Asbestos Type	Amount	Hazard	Friable
Ceiling		Ceiling Tiles (lay-in)	Not Applicable	N/A	C	Y		160			SF	V0000	Non-Asbestos		None	
Duct	Not Found	N/A	Not Applicable	N/A							%	V0000	Non-Asbestos		None	
Floor	N/a	Carpet	Not Applicable	N/A	A	Y					SF	V0000	Non-Asbestos		None	
Mechanical Equipment	Not Found	N/A	Not Applicable	N/A							%	V0000	Non-Asbestos		None	
Piping	Not Found	N/A	Not Applicable	N/A							%	V0000	Non-Asbestos		None	
Structure	Not Found	N/A	Not Applicable	N/A							%	V0000	Non-Asbestos		None	
Wall		Vermiculite/concrete block walls			D	N		500(7)			SF	V9500	Presumed Asbestos		Presumed Asbestos	F
Wall	N/a	Drywall and joint compound	Not Applicable		A	Y		160(7)			SF	V9500	Presumed Asbestos		Presumed Asbestos	NF

ALL DATA REPORT

**Client:** DCDSB  
**Location:** #27 : Corridor  
**Survey Date:** 2022-03-11

**Site:** 1324 Oxford Street, Oshawa, ON  
**Floor:** NA

**Building Name:** Monsignor Philip Coffey  
**Room #:**  
**Last Re-Assessment:** 0000-00-00

**Area (sqft):** 654

ASBESTOS																
System	Component	Material	Item	Covering	A*	V*	AP*	Good	Fair	Poor	Unit	Sample	Asbestos Type	Amount	Hazard	Friable
Ceiling		Ceiling tiles (glue-on), 12" x 12" glued - on with random pinholes			C	N	N	600			SF	S0020ABC	None Detected	N.D.	None	
Ceiling		Ceiling Tiles (lay-in)	Not Applicable	N/A	A	Y		192			SF	V0000	Non-Asbestos		None	
Ceiling		Drywall (no compound), Drywall above ceiling			C	N	N	600			SF	S0022ABC	None Detected	N.D.	None	
Duct	Not Found	N/A	Not Applicable	N/A							%	V0000	Non-Asbestos		None	
Floor	N/a	Terrazzo	Not Applicable		A	Y		300(7)			SF	V9500	Presumed Asbestos		Presumed Asbestos	NF
Floor	N/a	Mortar	Not Applicable	Ceramic Tiles	D	N		354(7)			SF	V9500	Presumed Asbestos		Presumed Asbestos	NF
Mechanical Equipment	Not Found	N/A	Not Applicable	N/A							%	V0000	Non-Asbestos		None	
Other		Caulking, Grey caulking			A	Y		10			LF	V0028	None Detected	N.D.	None	
Other		Mastic, Brown mastic adhered to ceiling tile			C	N	N	100			SF	S0021AB	None Detected	N.D.	None	
Other		Mastic, Brown mastic adhered to ceiling tile			C	N	N					S0021	None Detected	N.D.	None	
Piping	Not Found	N/A	Not Applicable	N/A							%	V0000	Non-Asbestos		None	
Structure	Not Found	N/A	Not Applicable	N/A							%	V0000	Non-Asbestos		None	
Wall		Vermiculite/concrete block walls			D	N		875(7)			SF	V9500	Presumed Asbestos		Presumed Asbestos	F
Wall	N/a	Masonry	Not Applicable	N/A							%	V0000	Non-Asbestos		None	

No access above ceiling 2

# ALL DATA REPORT

**Client:** DCDSB  
**Location:** #28 : Classroom 2  
**Survey Date:** 2022-03-11

**Site:** 1324 Oxford Street, Oshawa, ON  
**Floor:** NA

**Building Name:** Monsignor Philip Coffey  
**Room #:** 2  
**Last Re-Assessment:** 0000-00-00

**Area (sqft):** 980

ASBESTOS																
System	Component	Material	Item	Covering	A*	V*	AP*	Good	Fair	Poor	Unit	Sample	Asbestos Type	Amount	Hazard	Friable
Ceiling		Plaster	Not Applicable	N/A	A	Y		980			SF	V0006	None Detected	N.D.	None	
Duct	Not Found	N/A	Not Applicable	N/A							%	V0000	Non-Asbestos		None	
Floor	N/a	Terrazzo	Not Applicable		A	Y		980(7)			SF	V9500	Presumed Asbestos		Presumed Asbestos	NF
Mechanical Equipment	Not Found	N/A	Not Applicable	N/A							%	V0000	Non-Asbestos		None	
Other		Caulking, Brown caulking on door frame			A	Y		10(7)			LF	V0026	Chrysotile	0.5-5%	Confirmed Asbestos	NF
Piping	Not Found	N/A	Not Applicable	N/A							%	V0000	Non-Asbestos		None	
Structure	Beam	Steel	Not Applicable	N/A							%	V0000	Non-Asbestos		None	
Wall		Vermiculite/concrete block walls, Vermiculite			D	N		2250(7)			SF	S0029C	Libby Amphibole Detected	0.5-5%	Confirmed Asbestos	F
Wall	N/a	Drywall and joint compound	Not Applicable		A	Y		980(7)			SF	V9500	Presumed Asbestos		Presumed Asbestos	NF
Wall	N/a	Masonry	Not Applicable	N/A							%	V0000	Non-Asbestos		None	

# ALL DATA REPORT

**Client:** DCDSB  
**Location:** #29 : Classroom 1  
**Survey Date:** 2022-03-11

**Site:** 1324 Oxford Street, Oshawa, ON  
**Floor:** NA

**Building Name:** Monsignor Philip Coffey  
**Room #:** 1  
**Last Re-Assessment:** 0000-00-00

**Area (sqft):** 980

ASBESTOS																
System	Component	Material	Item	Covering	A*	V*	AP*	Good	Fair	Poor	Unit	Sample	Asbestos Type	Amount	Hazard	Friable
Ceiling		Plaster	Not Applicable	N/A	A	Y		980			SF	V0006	None Detected	N.D.	None	
Duct	Not Found	N/A	Not Applicable	N/A							%	V0000	Non-Asbestos		None	
Floor	N/a	Terrazzo	Not Applicable		A	Y		980(7)			SF	V9500	Presumed Asbestos		Presumed Asbestos	NF
Mechanical Equipment	Not Found	N/A	Not Applicable	N/A							%	V0000	Non-Asbestos		None	
Other		Caulking, Brown caulking on door frame			A	Y		10(7)			LF	V0026	Chrysotile	0.5-5%	Confirmed Asbestos	NF
Piping	Unidentified Pipe	Not Insulated	Not Applicable	N/A							%	V0000	Non-Asbestos		None	
Structure	Beam	Steel	Not Applicable	N/A							%	V0000	Non-Asbestos		None	
Wall		Vermiculite/concrete block walls			D	N		2500(7)			SF	V9500	Presumed Asbestos		Presumed Asbestos	F
Wall	N/a	Drywall and joint compound	Not Applicable		A	Y		980(7)			SF	V9500	Presumed Asbestos		Presumed Asbestos	NF
Wall	N/a	Masonry	Not Applicable	N/A							%	V0000	Non-Asbestos		None	

# ALL DATA REPORT

**Client:** DCDSB  
**Location:** #30 : Health/Washroom  
**Survey Date:** 2022-03-11

**Site:** 1324 Oxford Street, Oshawa, ON  
**Floor:** NA

**Building Name:** Monsignor Philip Coffey  
**Room #:**  
**Last Re-Assessment:** 0000-00-00

**Area (sqft):** 140

ASBESTOS																
System	Component	Material	Item	Covering	A*	V*	AP*	Good	Fair	Poor	Unit	Sample	Asbestos Type	Amount	Hazard	Friable
Ceiling		Ceiling Tiles (lay-in)	Not Applicable	N/A	A	Y		140			SF	V0000	Non-Asbestos		None	
Duct	Not Found	N/A	Not Applicable	N/A							%	V0000	Non-Asbestos		None	
Floor	N/a	Terrazzo	Not Applicable		A	Y		100(7)			SF	V9500	Presumed Asbestos		Presumed Asbestos	NF
Mechanical Equipment	Not Found	N/A	Not Applicable	N/A							%	V0000	Non-Asbestos		None	
Piping	Not Found	N/A	Not Applicable	N/A							%	V0000	Non-Asbestos		None	
Structure	Not Found	N/A	Not Applicable	N/A							%	V0000	Non-Asbestos		None	
Wall		Vermiculite/concrete block walls			D	N		250(7)			SF	V9500	Presumed Asbestos		Presumed Asbestos	F
Wall	N/a	Masonry	Not Applicable	N/A							%	V0000	Non-Asbestos		None	



# ALL DATA REPORT

**Client:** DCDSB  
**Location:** #31 : Storage/Washroom  
**Survey Date:** 2022-03-11

**Site:** 1324 Oxford Street, Oshawa, ON  
**Floor:** NA

**Building Name:** Monsignor Philip Coffey  
**Room #:**  
**Last Re-Assessment:** 0000-00-00

**Area (sqft):** 130

ASBESTOS																
System	Component	Material	Item	Covering	A*	V*	AP*	Good	Fair	Poor	Unit	Sample	Asbestos Type	Amount	Hazard	Friable
Ceiling		Ceiling Tiles (lay-in)	Not Applicable	N/A	A	Y		130			SF	V0000	Non-Asbestos		None	
Duct	Not Found	N/A	Not Applicable	N/A							%	V0000	Non-Asbestos		None	
Floor	N/a	Terrazzo	Not Applicable		A	Y		130(7)			SF	V9500	Presumed Asbestos		Presumed Asbestos	NF
Mechanical Equipment	Not Found	N/A	Not Applicable	N/A							%	V0000	Non-Asbestos		None	
Piping	Not Found	N/A	Not Applicable	N/A							%	V0000	Non-Asbestos		None	
Structure	Beam	Steel	Not Applicable	N/A							%	V0000	Non-Asbestos		None	
Wall		Vermiculite/concrete block walls			D	N		250(7)			SF	V9500	Presumed Asbestos		Presumed Asbestos	F
Wall	N/a	Drywall and joint compound	Not Applicable		A	Y		130(7)			SF	V9500	Presumed Asbestos		Presumed Asbestos	NF
Wall	N/a	Masonry	Not Applicable	N/A							%	V0000	Non-Asbestos		None	

Location part of location 30.

# ALL DATA REPORT

**Client:** DCDSB  
**Location:** #32 : Girls washroom  
**Survey Date:** 2022-03-11

**Site:** 1324 Oxford Street, Oshawa, ON  
**Floor:** NA

**Building Name:** Monsignor Philip Coffey  
**Room #:**  
**Last Re-Assessment:** 0000-00-00

**Area (sqft):** 240

ASBESTOS																
System	Component	Material	Item	Covering	A*	V*	AP*	Good	Fair	Poor	Unit	Sample	Asbestos Type	Amount	Hazard	Friable
Ceiling		Drywall and joint compound	Not Applicable	N/A	C	Y		240(7)			SF	V9500	Presumed Asbestos		Presumed Asbestos	NF
Floor	N/a	Terrazzo	Not Applicable		A	Y		240(7)			SF	V9500	Presumed Asbestos		Presumed Asbestos	NF
Piping	Unidentified Pipe	Fibreglass	Not Applicable	Canvas	C	Y		20			LF	V0000	Non-Asbestos		None	
Structure	Not Accessible	N/A	Not Applicable	N/A							%	V0000	Non-Asbestos		None	
Wall		Ceramic Tiles			A	Y										
Wall		Vermiculite/concrete block walls			D	N		1(7)			EA	S0010	Chrysotile	0.5-5%	Confirmed Asbestos	F
Wall	N/a	Masonry	Not Applicable	N/A							%	V0000	Non-Asbestos		None	

# ALL DATA REPORT

**Client:** DCDSB  
**Location:** #33 : Boys Washroom  
**Survey Date:** 2022-03-11

**Site:** 1324 Oxford Street, Oshawa, ON  
**Floor:** NA

**Building Name:** Monsignor Philip Coffey  
**Room #:**  
**Last Re-Assessment:** 0000-00-00

**Area (sqft):** 240

ASBESTOS																
System	Component	Material	Item	Covering	A*	V*	AP*	Good	Fair	Poor	Unit	Sample	Asbestos Type	Amount	Hazard	Friable
Ceiling		Drywall and joint compound	Not Applicable	N/A	C	Y		240(7)			SF	V9500	Presumed Asbestos		Presumed Asbestos	NF
Floor	N/a	Terrazzo	Not Applicable		A	Y					SF	V9500	Presumed Asbestos		Presumed Asbestos	NF
Piping	Unidentified Pipe	Fibreglass	Not Applicable	Canvas	C	Y		20			LF	V0000	Non-Asbestos		None	
Structure	Not Found	N/A	Not Applicable	N/A							%	V0000	Non-Asbestos		None	
Wall		Mortar		Ceramic Tiles	D	N		180(7)			SF	V9500	Presumed Asbestos		Presumed Asbestos	NF
Wall		Vermiculite/concrete block walls			D	N		250(7)			SF	V0010	Chrysotile	0.5-5%	Confirmed Asbestos	F
Wall	N/a	Masonry	Not Applicable	N/A							%	V0000	Non-Asbestos		None	

ALL DATA REPORT

**Client:** DCDSB  
**Location:** #34 : Office  
**Survey Date:** 2022-03-11

**Site:** 1324 Oxford Street, Oshawa, ON  
**Floor:** NA

**Building Name:** Monsignor Philip Coffey  
**Room #:** 8  
**Last Re-Assessment:** 0000-00-00

**Area (sqft):** 840

ASBESTOS																
System	Component	Material	Item	Covering	A*	V*	AP*	Good	Fair	Poor	Unit	Sample	Asbestos Type	Amount	Hazard	Friable
Ceiling		Drywall and joint compound	Not Applicable	N/A	A	Y		840(7)			SF	V9500	Presumed Asbestos		Presumed Asbestos	NF
Duct	Not Found	N/A	Not Applicable	N/A							%	V0000	Non-Asbestos		None	
Floor	N/a	Terrazzo	Not Applicable		A	Y		840(7)			SF	V9500	Presumed Asbestos		Presumed Asbestos	NF
Mechanical Equipment	Not Found	N/A	Not Applicable	N/A							%	V0000	Non-Asbestos		None	
Piping	Unidentified Pipe	Fibreglass	Not Applicable	Canvas	C	Y					LF	V0000	Non-Asbestos		None	
Structure	Beam	Steel	Not Applicable	N/A							%	V0000	Non-Asbestos		None	
Wall		Mortar		Ceramic Tiles	D	N		50(7)			SF	V9500	Presumed Asbestos		Presumed Asbestos	NF
Wall		Vermiculite/concrete block walls			D	N		1950(7)			SF	V9500	Presumed Asbestos		Presumed Asbestos	F
Wall	N/a	Drywall and joint compound	Not Applicable		A	Y		100(7)			SF	V9500	Presumed Asbestos		Presumed Asbestos	NF
Wall	N/a	Masonry	Not Applicable	N/A							%	V0000	Non-Asbestos		None	

ALL DATA REPORT

**Client:** DCDSB  
**Location:** #35 : Room 3  
**Survey Date:** 2022-03-11

**Site:** 1324 Oxford Street, Oshawa, ON  
**Floor:** NA

**Building Name:** Monsignor Philip Coffey  
**Room #:** 3  
**Last Re-Assessment:** 0000-00-00

**Area (sqft):** 840

ASBESTOS																
System	Component	Material	Item	Covering	A*	V*	AP*	Good	Fair	Poor	Unit	Sample	Asbestos Type	Amount	Hazard	Friable
Ceiling		Ceiling Tiles (lay-in)	Not Applicable	N/A	C	Y		840			SF	V0000	Non-Asbestos		None	
Duct	Not Found	N/A	Not Applicable	N/A							%	V0000	Non-Asbestos		None	
Floor	N/a	Terrazzo	Not Applicable		A	Y		840(7)			SF	V9500	Presumed Asbestos		Presumed Asbestos	NF
Mechanical Equipment	Not Found	N/A	Not Applicable	N/A							%	V0000	Non-Asbestos		None	
Piping	Not Found	N/A	Not Applicable	N/A							%	V0000	Non-Asbestos		None	
Piping	Unidentified Pipe	Fibreglass	Not Applicable	Canvas	C	Y					LF	V0000	Non-Asbestos		None	
Structure	Beam	Steel	Not Applicable	N/A							%	V0000	Non-Asbestos		None	
Wall		Vermiculite/concrete block walls			D	N		1950(7)			SF	V9500	Presumed Asbestos		Presumed Asbestos	F
Wall	N/a	Drywall and joint compound	Not Applicable		A	Y		100(7)			SF	V9500	Presumed Asbestos		Presumed Asbestos	NF
Wall	N/a	Masonry	Not Applicable	N/A							%	V0000	Non-Asbestos		None	

# ALL DATA REPORT

**Client:** DCDSB  
**Location:** #36 : Custodian Office  
**Survey Date:** 2022-03-11

**Site:** 1324 Oxford Street, Oshawa, ON  
**Floor:** NA

**Building Name:** Monsignor Philip Coffey  
**Room #:**  
**Last Re-Assessment:** 0000-00-00

**Area (sqft):** 200

ASBESTOS																
System	Component	Material	Item	Covering	A*	V*	AP*	Good	Fair	Poor	Unit	Sample	Asbestos Type	Amount	Hazard	Friable
Ceiling		Ceiling tiles (glue-on)	Not Applicable	N/A	A	Y		200			SF	V0000	Non-Asbestos		None	
Duct	Not Found	N/A	Not Applicable	N/A							%	V0000	Non-Asbestos		None	
Floor	N/a	Terrazzo	Not Applicable		A	Y		200(7)			SF	V9500	Presumed Asbestos		Presumed Asbestos	NF
Mechanical Equipment	Not Found	N/A	Not Applicable	N/A							%	V0000	Non-Asbestos		None	
Piping	Unidentified Pipe	Fibreglass	Not Applicable	Canvas	C	Y					LF	V0000	Non-Asbestos		None	
Structure	Beam	Steel	Not Applicable	N/A							%	V0000	Non-Asbestos		None	
Wall		Vermiculite/concrete block walls			D	N		750(7)			SF	V9500	Presumed Asbestos		Presumed Asbestos	F
Wall	N/a	Drywall and joint compound	Not Applicable		A	Y		100(7)			SF	V9500	Presumed Asbestos		Presumed Asbestos	NF
Wall	N/a	Masonry	Not Applicable	N/A							%	V0000	Non-Asbestos		None	

# ALL DATA REPORT

**Client:** DCDSB  
**Location:** #37 : Room 4  
**Survey Date:** 2022-03-11

**Site:** 1324 Oxford Street, Oshawa, ON  
**Floor:** NA

**Building Name:** Monsignor Philip Coffey  
**Room #:** 7  
**Last Re-Assessment:** 0000-00-00

**Area (sqft):** 840

ASBESTOS																
System	Component	Material	Item	Covering	A*	V*	AP*	Good	Fair	Poor	Unit	Sample	Asbestos Type	Amount	Hazard	Friable
Ceiling	N/a	Drywall and joint compound	Not Applicable	N/A	A	Y		840(7)			SF	V9500	Presumed Asbestos		Presumed Asbestos	NF
Duct	Not Found	N/A	Not Applicable	N/A							%	V0000	Non-Asbestos		None	
Floor	N/a	Terrazzo	Not Applicable		A	Y		840(7)			SF	V9500	Presumed Asbestos		Presumed Asbestos	NF
Mechanical Equipment	Not Found	N/A	Not Applicable	N/A							%	V0000	Non-Asbestos		None	
Piping	Unidentified Pipe	Fibreglass	Not Applicable	Canvas	C	Y		150			LF	V0000	Non-Asbestos		None	
Structure	Beam	Steel	Not Applicable	N/A							%	V0000	Non-Asbestos		None	
Wall		Vermiculite/concrete block walls			D	N		1950(7)			SF	V9500	Presumed Asbestos		Presumed Asbestos	F
Wall	N/a	Drywall and joint compound	Not Applicable		A	Y		100(7)			SF	V9500	Presumed Asbestos		Presumed Asbestos	NF
Wall	N/a	Masonry	Not Applicable	N/A							%	V0000	Non-Asbestos		None	

# ALL DATA REPORT

**Client:** DCDSB  
**Location:** #38 : Classroom 4  
**Survey Date:** 2022-03-11

**Site:** 1324 Oxford Street, Oshawa, ON  
**Floor:** NA

**Building Name:** Monsignor Philip Coffey  
**Room #:** 4  
**Last Re-Assessment:** 0000-00-00

**Area (sqft):** 840

ASBESTOS																
System	Component	Material	Item	Covering	A*	V*	AP*	Good	Fair	Poor	Unit	Sample	Asbestos Type	Amount	Hazard	Friable
Ceiling	N/a	Drywall and joint compound	Not Applicable	N/A	A	Y		840(7)			SF	V9500	Presumed Asbestos		Presumed Asbestos	NF
Duct	Not Found	N/A	Not Applicable	N/A							%	V0000	Non-Asbestos		None	
Floor	N/a	Terrazzo	Not Applicable		A	Y		840(7)			SF	V9500	Presumed Asbestos		Presumed Asbestos	NF
Mechanical Equipment	Not Found	N/A	Not Applicable	N/A							%	V0000	Non-Asbestos		None	
Piping	Unidentified Pipe	Fibreglass	Not Applicable	Canvas	C	Y		150			LF	V0000	Non-Asbestos		None	
Structure	Beam	Steel	Not Applicable	N/A							%	V0000	Non-Asbestos		None	
Wall		Vermiculite/concrete block walls			D	N		1950(7)			SF	V9500	Presumed Asbestos		Presumed Asbestos	F
Wall	N/a	Drywall and joint compound	Not Applicable		A	Y		840(7)			SF	V9500	Presumed Asbestos		Presumed Asbestos	NF
Wall	N/a	Masonry	Not Applicable	N/A							%	V0000	Non-Asbestos		None	



# ALL DATA REPORT

**Client:** DCDSB  
**Location:** #39 : Classroom 5  
**Survey Date:** 2022-03-11

**Site:** 1324 Oxford Street, Oshawa, ON  
**Floor:** NA

**Building Name:** Monsignor Philip Coffey  
**Room #:** 5  
**Last Re-Assessment:** 0000-00-00

**Area (sqft):** 840

ASBESTOS																
System	Component	Material	Item	Covering	A*	V*	AP*	Good	Fair	Poor	Unit	Sample	Asbestos Type	Amount	Hazard	Friable
Ceiling	N/a	Drywall and joint compound	Not Applicable	N/A	C	Y		840(7)			SF	V9500	Presumed Asbestos		Presumed Asbestos	NF
Duct	Not Found	N/A	Not Applicable	N/A							%	V0000	Non-Asbestos		None	
Floor	N/a	Terrazzo	Not Applicable		A	Y		840(7)			SF	V9500	Presumed Asbestos		Presumed Asbestos	NF
Mechanical Equipment	Not Found	N/A	Not Applicable	N/A							%	V0000	Non-Asbestos		None	
Piping	Unidentified Pipe	Fibreglass	Not Applicable	Canvas	C	Y					LF	V0000	Non-Asbestos		None	
Structure	Beam	Steel	Not Applicable	N/A							%	V0000	Non-Asbestos		None	
Wall		Vermiculite/concrete block walls			D	N		1950(7)			SF	V9500	Presumed Asbestos		Presumed Asbestos	F
Wall	N/a	Drywall and joint compound	Not Applicable		A	Y		840(7)			SF	V9500	Presumed Asbestos		Presumed Asbestos	NF
Wall	N/a	Masonry	Not Applicable	N/A							%	V0000	Non-Asbestos		None	

# ALL DATA REPORT

**Client:** DCDSB  
**Location:** #40 : Classroom 6  
**Survey Date:** 2022-03-11

**Site:** 1324 Oxford Street, Oshawa, ON  
**Floor:** NA

**Building Name:** Monsignor Philip Coffey  
**Room #:** 6  
**Last Re-Assessment:** 0000-00-00

**Area (sqft):** 840

ASBESTOS																
System	Component	Material	Item	Covering	A*	V*	AP*	Good	Fair	Poor	Unit	Sample	Asbestos Type	Amount	Hazard	Friable
Ceiling	N/a	Drywall and joint compound	Not Applicable	N/A	C	Y		840(7)			SF	V9500	Presumed Asbestos		Presumed Asbestos	NF
Duct	Not Found	N/A	Not Applicable	N/A							%	V0000	Non-Asbestos		None	
Floor	N/a	Terrazzo	Not Applicable		A	Y		840(7)			SF	V9500	Presumed Asbestos		Presumed Asbestos	NF
Mechanical Equipment	Not Found	N/A	Not Applicable	N/A							%	V0000	Non-Asbestos		None	
Piping	Unidentified Pipe	Fibreglass	Not Applicable	N/A	C	Y					LF	V0000	Non-Asbestos		None	
Structure	Beam	Steel	Not Applicable	N/A							%	V0000	Non-Asbestos		None	
Wall		Vermiculite/concrete block walls, Vermiculite			D	N		1950(7)			SF	S0029B	Libby Amphibole Detected	0.5-5%	Confirmed Asbestos	F
Wall	N/a	Drywall and joint compound	Not Applicable		A	Y		840(7)			SF	V9500	Presumed Asbestos		Presumed Asbestos	NF
Wall	N/a	Masonry	Not Applicable	N/A							%	V0000	Non-Asbestos		None	

ALL DATA REPORT

**Client:** DCDSB  
**Location:** #41 : Corridor  
**Survey Date:** 2022-03-11

**Site:** 1324 Oxford Street, Oshawa, ON  
**Floor:** NA

**Building Name:** Monsignor Philip Coffey  
**Room #:**  
**Last Re-Assessment:** 0000-00-00

**Area (sqft):** 732

ASBESTOS																
System	Component	Material	Item	Covering	A*	V*	AP*	Good	Fair	Poor	Unit	Sample	Asbestos Type	Amount	Hazard	Friable
Ceiling		Ceiling tiles (glue-on)			A	Y		100			%	V0000	Non-Asbestos		None	
Ceiling		Ceiling Tiles (lay-in)	Not Applicable	N/A	C	Y		732			SF	V0000	Non-Asbestos		None	
Duct	Not Found	N/A	Not Applicable	N/A							%	V0000	Non-Asbestos		None	
Floor	N/a	Terrazzo	Not Applicable		A	Y		732(7)			SF	V9500	Presumed Asbestos		Presumed Asbestos	NF
Mechanical Equipment	Not Found	N/A	Not Applicable	N/A							%	V0000	Non-Asbestos		None	
Other		Caulking, Off white caulking						450			LF	S0011ABC	[None]	0.5-5%	[Abated]	
Other		Caulking, Grey caulking			A	Y		10			LF	V0028	None Detected	N.D.	None	
Piping	Unidentified Pipe	Fibreglass	Not Applicable	Canvas	C	Y					LF	V0000	Non-Asbestos		None	
Structure	Not Found	N/A	Not Applicable	N/A							%	V0000	Non-Asbestos		None	
Wall		Wallboard w/Plastic Laminate			A	Y										
Wall		Vermiculite/concrete block walls			D	N		1750(7)			SF	V9500	Presumed Asbestos		Presumed Asbestos	F
Wall	N/a	Masonry	Not Applicable	N/A							%	V0000	Non-Asbestos		None	

# ALL DATA REPORT

**Client:** DCDSB  
**Location:** #42 : Basement Mechanical  
**Survey Date:** 2022-03-11

**Site:** 1324 Oxford Street, Oshawa, ON  
**Floor:** NA

**Building Name:** Monsignor Philip Coffey  
**Room #:**  
**Last Re-Assessment:** 0000-00-00

**Area (sqft):** 400

ASBESTOS																
System	Component	Material	Item	Covering	A*	V*	AP*	Good	Fair	Poor	Unit	Sample	Asbestos Type	Amount	Hazard	Friable
Ceiling	N/a	Concrete (poured)	Not Applicable	N/A				400			%	V0000	Non-Asbestos		None	
Duct	Not Found	N/A	Not Applicable	N/A							%	V0000	Non-Asbestos		None	
Floor	N/a	Concrete (poured)	Not Applicable	N/A				400			%	V0000	Non-Asbestos		None	
Mechanical Equipment	Not Found	N/A	Not Applicable	N/A							%	V0000	Non-Asbestos		None	
Piping	Unidentified Pipe	Fibreglass	Not Applicable	Canvas	C	Y					LF	V0000	Non-Asbestos		None	
Structure	Not Found	N/A	Not Applicable	N/A							%	V0000	Non-Asbestos		None	
Wall		Vermiculite/concrete block walls			D	N		750(7)			SF	V9500	Presumed Asbestos		Presumed Asbestos	F
Wall	N/a	Concrete (poured)	Not Applicable	N/A							%	V0000	Non-Asbestos		None	

# ALL DATA REPORT

**Client:** DCDSB  
**Location:** #44 : Entrance Vestibule  
**Survey Date:** 2022-03-21

**Site:** 1324 Oxford Street, Oshawa, ON  
**Floor:**

**Building Name:** Monsignor Philip Coffey  
**Room #:**  
**Last Re-Assessment:** 0000-00-00

**Area (sqft):** 30

ASBESTOS																
System	Component	Material	Item	Covering	A*	V*	AP*	Good	Fair	Poor	Unit	Sample	Asbestos Type	Amount	Hazard	Friable
Duct	Not Found	N/A	Not Applicable	N/A								V0000	Non-Asbestos		None	
Floor	N/a	Terrazzo	Not Applicable		D	N		30(7)			SF	V9500	Presumed Asbestos		Presumed Asbestos	NF
Mechanical Equipment	Not Found	N/A	Not Applicable	N/A								V0000	Non-Asbestos		None	
Other		Caulking, Grey caulking			A	Y						S0028BC	None Detected	N.D.	None	
Piping	Not Found	N/A	Not Applicable	N/A								V0000	Non-Asbestos		None	
Structure	Not Found	N/A	Not Applicable	N/A								V0000	Non-Asbestos		None	
Wall		Vermiculite/concrete block walls			D	N		250(7)			SF	V9000	Confirmed Asbestos		Confirmed Asbestos	F
Wall	N/a	Masonry	Not Applicable	N/A	A	Y		91			SF	V0000	Non-Asbestos		None	

**Client:** DCDSB  
**Location:** #44 : Entrance Vestibule  
**Survey Date:** 2022-03-21

**Site:** 1324 Oxford Street, Oshawa, ON  
**Floor:**

**Building Name:** Monsignor Philip Coffey  
**Room #:**  
**Last Re-Assessment:** 0000-00-00

**Area (sqft):** 30

PCB						
Component	Quantity	Unit	Sample	Sample Description	Amount	PCB
CAULKING			P0002	Grey caulking on door frame	<0.2 mg/kg	No

## Legend:



Sample number		Units		Other	
S####	Asbestos sample collected	SF	Square feet	A	Access
L####	Paint sample collected	LF	Linear feet	V	Visible
P####	PCB sample collected	EA	Each	AP	Air Plenum
M####	Mould sample collected	%	Percentage	F	Friable material
V####	Material is visually identified to be identical to S####	LF	Linear feet	NF	Non Friable material
V0000	Known non hazardous material			PF	Potentially Friable material
V9000	Material visually identified as a Hazardous Material			Pb	Lead
V9500	Material is presumed to be a hazardous material			Hg	Mercury
				As	Arsenic
				Cr	Chromium

Access	
A	Accessible to all building occupants
B	Accessible to maintenance and operations staff without a ladder
C	Accessible to maintenance and operations staff with a ladder. Also rarely entered, locked areas
D	Not normally accessible

Condition	
Good	No visible damage or deterioration
Fair	Minor, repairable damage, cracking, delamination or deterioration
Poor	Irreparable damage or deterioration with exposed and missing material

Visible	
Y	The material is visible when standing on the floor of the room, without the removal or opening of other building components (e.g. ceiling tiles or access panels).
N	The material is not visible to view when standing on the floor of the room and requires the removal of a building component (e.g. ceilings tiles or access panels) to view and access. Includes rarely entered crawlspaces, attic spaces, etc. Observations will be limited to the extent visible from the access points.

Air Plenum	
Yes or No	The material is in a return air plenum or in a direct airstream or there is evidence of air erosion (e.g. duct for heating or cooling blowing directly on or across an ACM). This field is only completed where Air Plenum consideration is required by regulation.

Colour Coding	
	The material is known to contain regulated concentrations of asbestos; either by analytical results or visible identification (use of the V9000 code).
	The material is presumed to contain asbestos; based on visual appearances; typically a material known to historically contain asbestos; however, not sampled due to limited access or the destructive nature of the sampling.

Action					
(1)	Clean up of ACM Debris	(2)	Precautions for Access Which may Disturb ACM Debris	(3)	ACM removal
(4)	Precautions for Work Which may Disturb ACM in Poor Condition	(5)	Proactive ACM removal (Minimum repair required for fair condition)	(6)	ACM repair
(7)	Management program and surveillance				