





100% polyester  
 100% cotton  
 100% rayon  
 100% silk  
 100% wool  
 100% linen  
 100% bamboo  
 100% hemp  
 100% jute  
 100% sisal  
 100% seagrass  
 100% coir  
 100% cotton  
 100% polyester  
 100% rayon  
 100% silk  
 100% wool  
 100% linen  
 100% bamboo  
 100% hemp  
 100% jute  
 100% sisal  
 100% seagrass  
 100% coir

**Full disclosure on a page by page basis** is what we need. In other words, the disclosure should be made in the same way as the information is presented in the advertisement.

[illegible]

Page 1 of 1

100

© 2000 Blackwell Science Ltd  
Journal of Internal Medicine 247: 391–397

7	Interest for 2012	14,083.29
8	100% Credit Reserve	14,083.10
	<b>2012-2013</b>	<b>04.73</b>

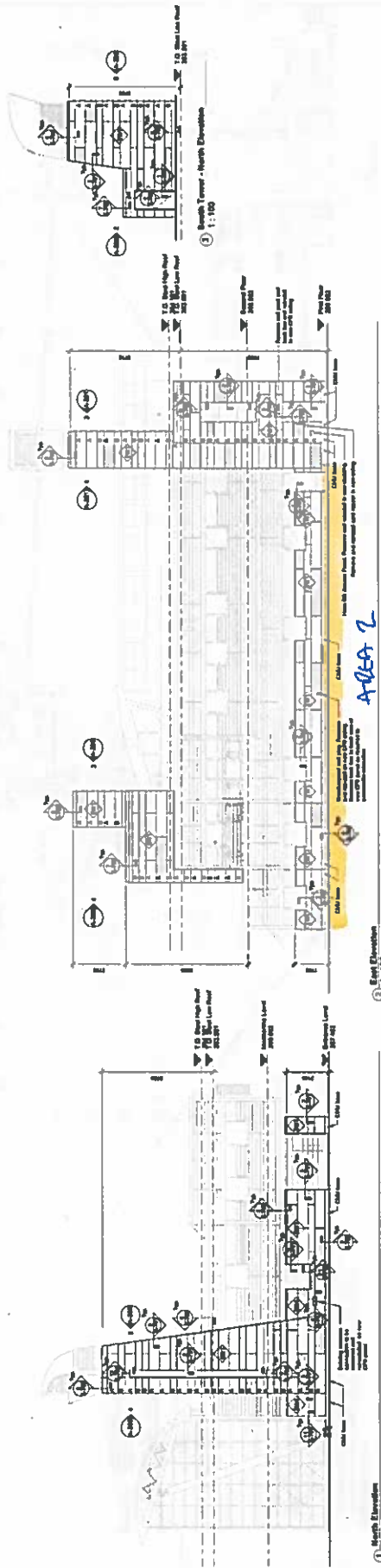
**Engineering  
Planning College & Work**

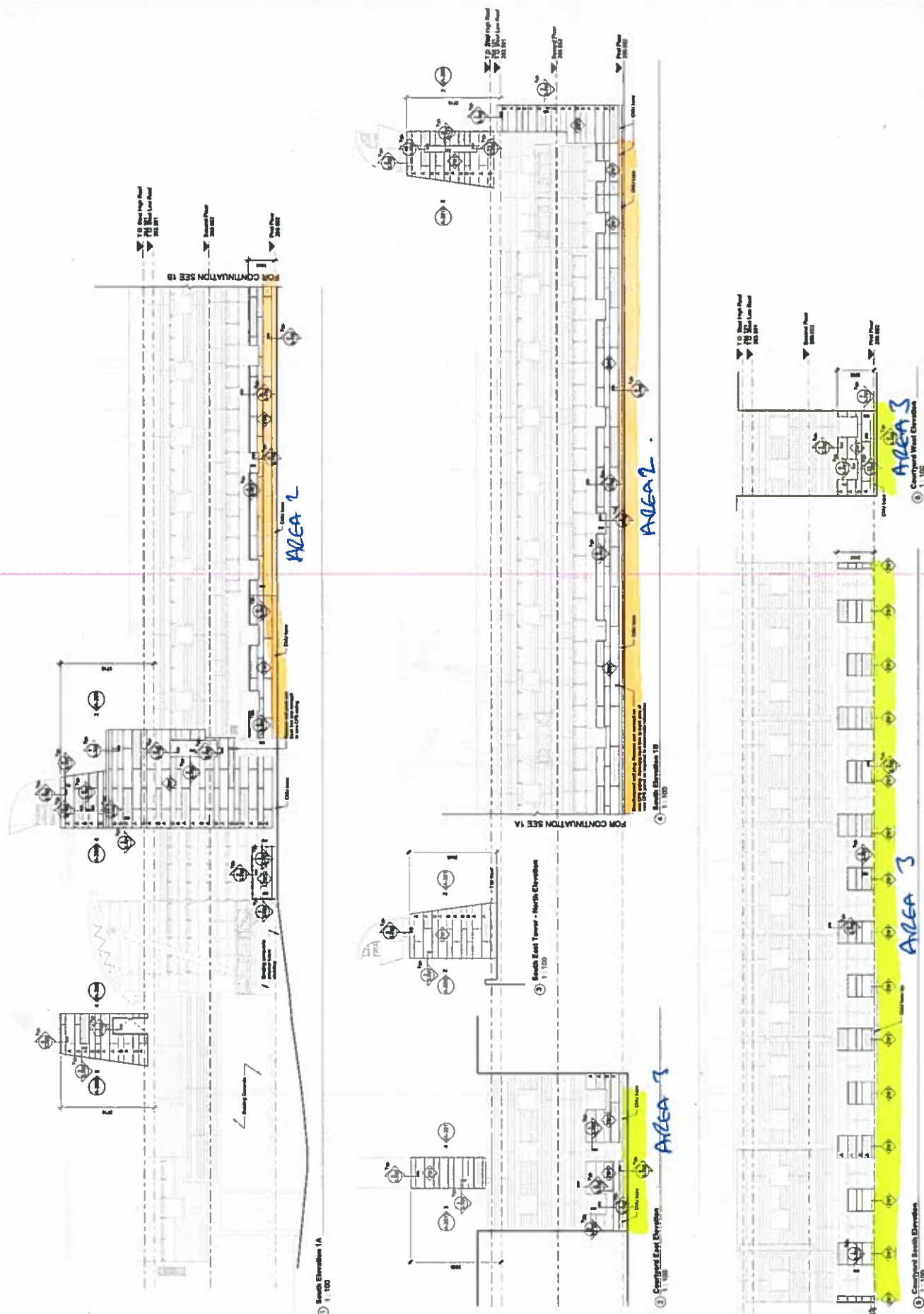
Percentage Change from 1980

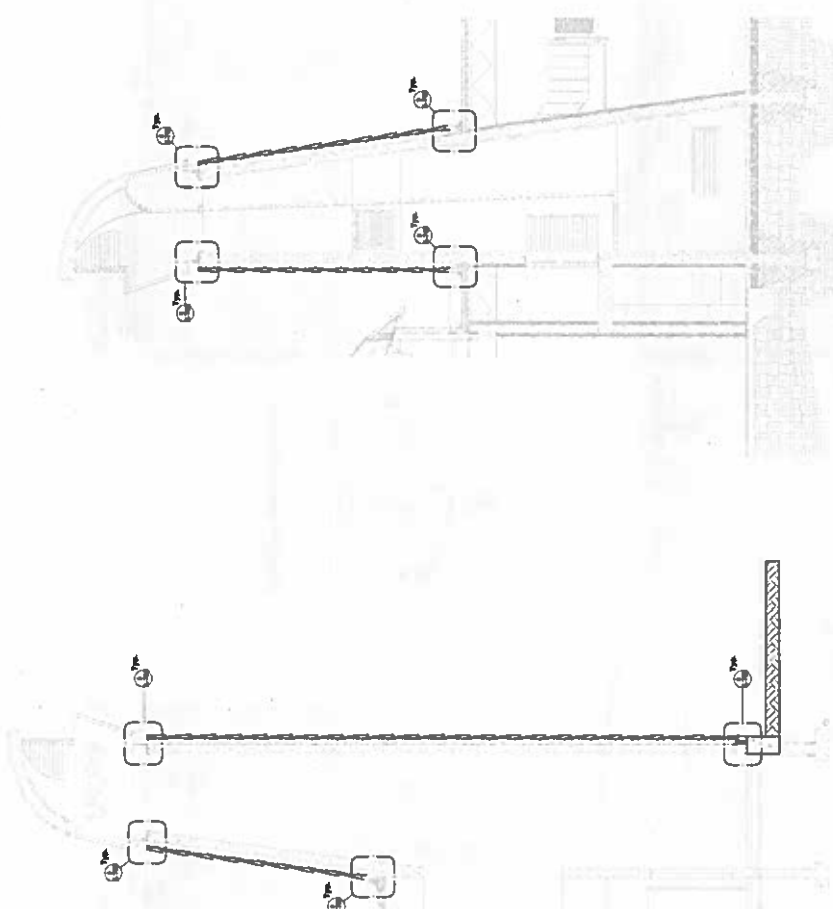
	<b>Project Number</b> (P-127)
	<b>Project Title</b> (P-127)

Checklist for  
COP

007-11







East-West Well Section @ North Tower

① **Wall Section @ East Tower**



1997-1998  
 1998-1999  
 1999-2000  
 2000-2001  
 2001-2002  
 2002-2003  
 2003-2004  
 2004-2005  
 2005-2006  
 2006-2007  
 2007-2008  
 2008-2009  
 2009-2010  
 2010-2011  
 2011-2012  
 2012-2013  
 2013-2014  
 2014-2015  
 2015-2016  
 2016-2017  
 2017-2018  
 2018-2019  
 2019-2020  
 2020-2021  
 2021-2022  
 2022-2023  
 2023-2024  
 2024-2025  
 2025-2026  
 2026-2027  
 2027-2028  
 2028-2029  
 2029-2030  
 2030-2031  
 2031-2032  
 2032-2033  
 2033-2034  
 2034-2035  
 2035-2036  
 2036-2037  
 2037-2038  
 2038-2039  
 2039-2040  
 2040-2041  
 2041-2042  
 2042-2043  
 2043-2044  
 2044-2045  
 2045-2046  
 2046-2047  
 2047-2048  
 2048-2049  
 2049-2050  
 2050-2051  
 2051-2052  
 2052-2053  
 2053-2054  
 2054-2055  
 2055-2056  
 2056-2057  
 2057-2058  
 2058-2059  
 2059-2060  
 2060-2061  
 2061-2062  
 2062-2063  
 2063-2064  
 2064-2065  
 2065-2066  
 2066-2067  
 2067-2068  
 2068-2069  
 2069-2070  
 2070-2071  
 2071-2072  
 2072-2073  
 2073-2074  
 2074-2075  
 2075-2076  
 2076-2077  
 2077-2078  
 2078-2079  
 2079-2080  
 2080-2081  
 2081-2082  
 2082-2083  
 2083-2084  
 2084-2085  
 2085-2086  
 2086-2087  
 2087-2088  
 2088-2089  
 2089-2090  
 2090-2091  
 2091-2092  
 2092-2093  
 2093-2094  
 2094-2095  
 2095-2096  
 2096-2097  
 2097-2098  
 2098-2099  
 2099-2100  
 2100-2101  
 2101-2102  
 2102-2103  
 2103-2104  
 2104-2105  
 2105-2106  
 2106-2107  
 2107-2108  
 2108-2109  
 2109-2110  
 2110-2111  
 2111-2112  
 2112-2113  
 2113-2114  
 2114-2115  
 2115-2116  
 2116-2117  
 2117-2118  
 2118-2119  
 2119-2120  
 2120-2121  
 2121-2122  
 2122-2123  
 2123-2124  
 2124-2125  
 2125-2126  
 2126-2127  
 2127-2128  
 2128-2129  
 2129-2130  
 2130-2131  
 2131-2132  
 2132-2133  
 2133-2134  
 2134-2135  
 2135-2136  
 2136-2137  
 2137-2138  
 2138-2139  
 2139-2140  
 2140-2141  
 2141-2142  
 2142-2143  
 2143-2144  
 2144-2145  
 2145-2146  
 2146-2147  
 2147-2148  
 2148-2149  
 2149-2150  
 2150-2151  
 2151-2152  
 2152-2153  
 2153-2154  
 2154-2155  
 2155-2156  
 2156-2157  
 2157-2158  
 2158-2159  
 2159-2160  
 2160-2161  
 2161-2162  
 2162-2163  
 2163-2164  
 2164-2165  
 2165-2166  
 2166-2167  
 2167-2168  
 2168-2169  
 2169-2170  
 2170-2171  
 2171-2172  
 2172-2173  
 2173-2174  
 2174-2175  
 2175-2176  
 2176-2177  
 2177-2178  
 2178-2179  
 2179-2180  
 2180-2181  
 2181-2182  
 2182-2183  
 2183-2184  
 2184-2185  
 2185-2186  
 2186-2187  
 2187-2188  
 2188-2189  
 2189-2190  
 2190-2191  
 2191-2192  
 2192-2193  
 2193-2194  
 2194-2195  
 2195-2196  
 2196-2197  
 2197-2198  
 2198-2199  
 2199-2200  
 2200-2201  
 2201-2202  
 2202-2203  
 2203-2204  
 2204-2205  
 2205-2206  
 2206-2207  
 2207-2208  
 2208-2209  
 2209-2210  
 2210-2211  
 2211-2212  
 2212-2213  
 2213-2214  
 2214-2215  
 2215-2216  
 2216-2217  
 2217-2218  
 2218-2219  
 2219-2220  
 2220-2221  
 2221-2222  
 2222-2223  
 2223-2224  
 2224-2225  
 2225-2226  
 2226-2227  
 2227-2228  
 2228-2229  
 2229-2230  
 2230-2231  
 2231-2232  
 2232-2233  
 2233-2234  
 2234-2235  
 2235-2236  
 2236-2237  
 2237-2238  
 2238-2239  
 2239-2240  
 2240-2241  
 2241-2242  
 2242-2243  
 2243-2244  
 2244-2245  
 2245-2246  
 2246-2247  
 2247-2248  
 2248-2249  
 2249-2250  
 2250-2251  
 2251-2252  
 2252-2253  
 2253-2254  
 2254-2255  
 2255-2256  
 2256-2257  
 2257-2258  
 2258-2259  
 2259-2260  
 2260-2261  
 2261-2262  
 2262-2263  
 2263-2264  
 2264-2265  
 2265-2266  
 2266-2267  
 2267-2268  
 2268-2269  
 2269-2270  
 2270-2271  
 2271-2272  
 2272-2273  
 2273-2274  
 2274-2275  
 2275-2276  
 2276-2277  
 2277-2278  
 2278-2279  
 2279-2280  
 2280-2281  
 2281-2282  
 2282-2283  
 2283-2284  
 2284-2285  
 2285-2286  
 2286-2287  
 2287-2288  
 2288-2289  
 228

Semi-Annual Financials, \$ Millions	
As of	Adjusted
6/30/99	Compared to 1998
12	Percent change
12	Revenue
12	Operating income
12	Net income
12	EPS

DATE	DESCRIPTION	AMOUNT
10/01	1000.00	1000.00
10/02	1000.00	1000.00
10/03	1000.00	1000.00
10/04	1000.00	1000.00
10/05	1000.00	1000.00
10/06	1000.00	1000.00
10/07	1000.00	1000.00
10/08	1000.00	1000.00
10/09	1000.00	1000.00
10/10	1000.00	1000.00
10/11	1000.00	1000.00
10/12	1000.00	1000.00
10/13	1000.00	1000.00
10/14	1000.00	1000.00
10/15	1000.00	1000.00
10/16	1000.00	1000.00
10/17	1000.00	1000.00
10/18	1000.00	1000.00
10/19	1000.00	1000.00
10/20	1000.00	1000.00
10/21	1000.00	1000.00
10/22	1000.00	1000.00
10/23	1000.00	1000.00
10/24	1000.00	1000.00
10/25	1000.00	1000.00
10/26	1000.00	1000.00
10/27	1000.00	1000.00
10/28	1000.00	1000.00
10/29	1000.00	1000.00
10/30	1000.00	1000.00
10/31	1000.00	1000.00
11/01	1000.00	1000.00
11/02	1000.00	1000.00
11/03	1000.00	1000.00
11/04	1000.00	1000.00
11/05	1000.00	1000.00
11/06	1000.00	1000.00
11/07	1000.00	1000.00
11/08	1000.00	1000.00
11/09	1000.00	1000.00
11/10	1000.00	1000.00
11/11	1000.00	1000.00
11/12	1000.00	1000.00
11/13	1000.00	1000.00
11/14	1000.00	1000.00
11/15	1000.00	1000.00
11/16	1000.00	1000.00
11/17	1000.00	1000.00
11/18	1000.00	1000.00
11/19	1000.00	1000.00
11/20	1000.00	1000.00
11/21	1000.00	1000.00
11/22	1000.00	1000.00
11/23	1000.00	1000.00
11/24	1000.00	1000.00
11/25	1000.00	1000.00
11/26	1000.00	1000.00
11/27	1000.00	1000.00
11/28	1000.00	1000.00
11/29	1000.00	1000.00
11/30	1000.00	1000.00
12/01	1000.00	1000.00
12/02	1000.00	1000.00
12/03	1000.00	1000.00
12/04	1000.00	1000.00
12/05	1000.00	1000.00
12/06	1000.00	1000.00
12/07	1000.00	1000.00
12/08	1000.00	1000.00
12/09	1000.00	1000.00
12/10	1000.00	1000.00
12/11	1000.00	1000.00
12/12	1000.00	1000.00
12/13	1000.00	1000.00
12/14	1000.00	1000.00
12/15	1000.00	1000.00
12/16	1000.00	1000.00
12/17	1000.00	1000.00
12/18	1000.00	1000.00
12/19	1000.00	1000.00
12/20	1000.00	1000.00
12/21	1000.00	1000.00
12/22	1000.00	1000.00
12/23	1000.00	1000.00
12/24	1000.00	1000.00
12/25	1000.00	1000.00
12/26	1000.00	1000.00
12/27	1000.00	1000.00
12/28	1000.00	1000.00
12/29	1000.00	1000.00
12/30	1000.00	1000.00
12/31	1000.00	1000.00

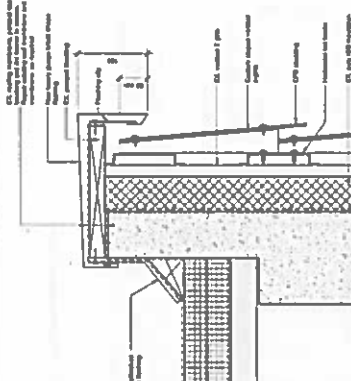
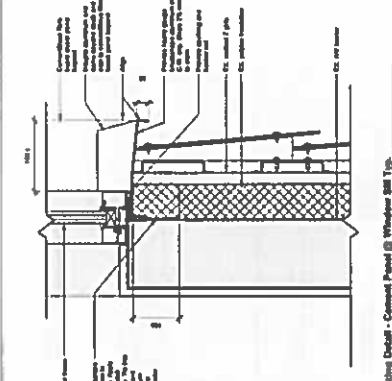
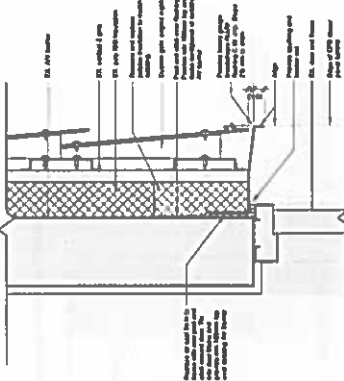
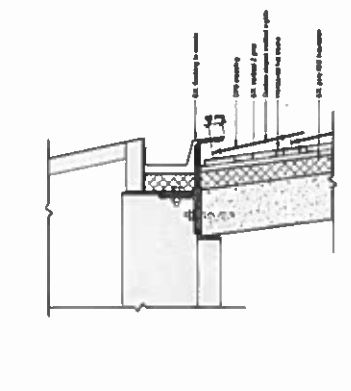
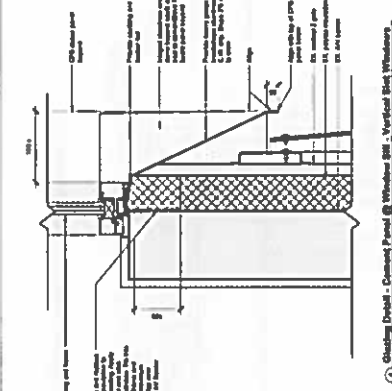
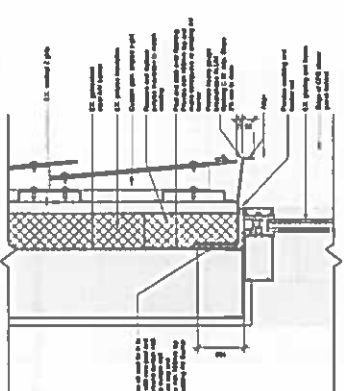
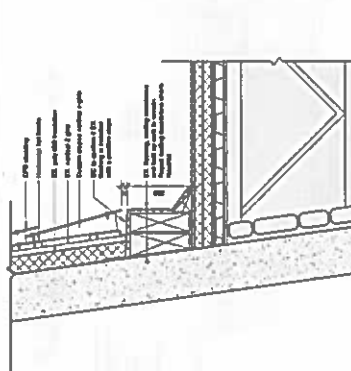
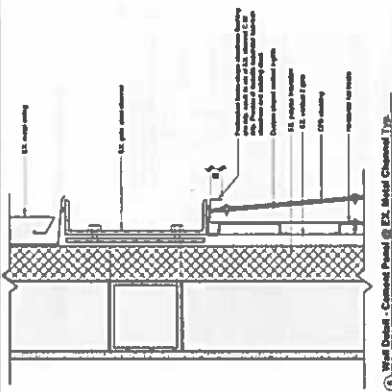
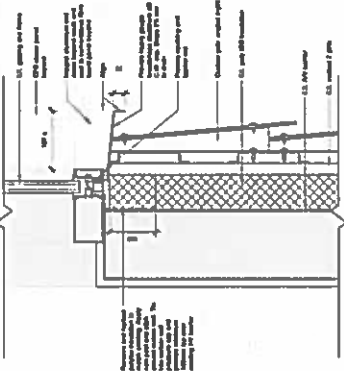
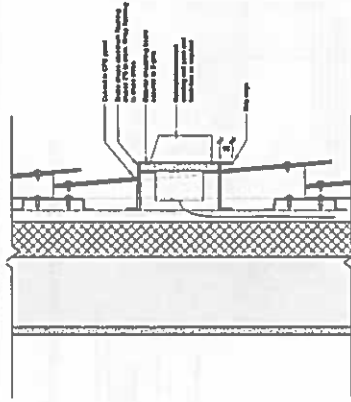
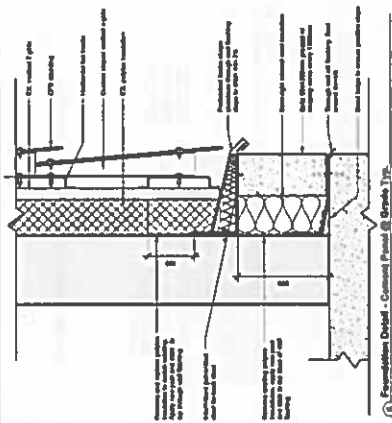
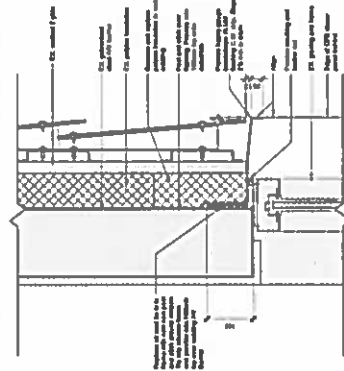
University of California, B. Wing  
Berkeley, CA 94720-1775

### Section Details



1. **Product Name:** \_\_\_\_\_  
 2. **Product Number:** \_\_\_\_\_  
 3. **Product Description:** \_\_\_\_\_  
 4. **Product Price:** \_\_\_\_\_  
 5. **Product Quantity:** \_\_\_\_\_  
 6. **Product Status:** \_\_\_\_\_  
 7. **Product Location:** \_\_\_\_\_  
 8. **Product Date:** \_\_\_\_\_  
 9. **Product Time:** \_\_\_\_\_  
 10. **Product User:** \_\_\_\_\_  
 11. **Product Password:** \_\_\_\_\_  
 12. **Product Email:** \_\_\_\_\_  
 13. **Product Phone:** \_\_\_\_\_  
 14. **Product Address:** \_\_\_\_\_  
 15. **Product City:** \_\_\_\_\_  
 16. **Product State:** \_\_\_\_\_  
 17. **Product Zip:** \_\_\_\_\_  
 18. **Product Country:** \_\_\_\_\_  
 19. **Product Language:** \_\_\_\_\_  
 20. **Product Currency:** \_\_\_\_\_  
 21. **Product Tax:** \_\_\_\_\_  
 22. **Product Shipping:** \_\_\_\_\_  
 23. **Product Handling:** \_\_\_\_\_  
 24. **Product Insurance:** \_\_\_\_\_  
 25. **Product Tracking:** \_\_\_\_\_  
 26. **Product Signature:** \_\_\_\_\_  
 27. **Product Stamp:** \_\_\_\_\_  
 28. **Product Mark:** \_\_\_\_\_  
 29. **Product Seal:** \_\_\_\_\_  
 30. **Product Label:** \_\_\_\_\_  
 31. **Product Tag:** \_\_\_\_\_  
 32. **Product Box:** \_\_\_\_\_  
 33. **Product Bag:** \_\_\_\_\_  
 34. **Product Container:** \_\_\_\_\_  
 35. **Product Package:** \_\_\_\_\_  
 36. **Product Unit:** \_\_\_\_\_  
 37. **Product Weight:** \_\_\_\_\_  
 38. **Product Volume:** \_\_\_\_\_  
 39. **Product Area:** \_\_\_\_\_  
 40. **Product Length:** \_\_\_\_\_  
 41. **Product Width:** \_\_\_\_\_  
 42. **Product Height:** \_\_\_\_\_  
 43. **Product Depth:** \_\_\_\_\_  
 44. **Product Thickness:** \_\_\_\_\_  
 45. **Product Diameter:** \_\_\_\_\_  
 46. **Product Radius:** \_\_\_\_\_  
 47. **Product Circumference:** \_\_\_\_\_  
 48. **Product Surface:** \_\_\_\_\_  
 49. **Product Volume:** \_\_\_\_\_  
 50. **Product Weight:** \_\_\_\_\_  
 51. **Product Length:** \_\_\_\_\_  
 52. **Product Width:** \_\_\_\_\_  
 53. **Product Height:** \_\_\_\_\_  
 54. **Product Depth:** \_\_\_\_\_  
 55. **Product Thickness:** \_\_\_\_\_  
 56. **Product Diameter:** \_\_\_\_\_  
 57. **Product Radius:** \_\_\_\_\_  
 58. **Product Circumference:** \_\_\_\_\_  
 59. **Product Surface:** \_\_\_\_\_  
 60. **Product Volume:** \_\_\_\_\_  
 61. **Product Weight:** \_\_\_\_\_  
 62. **Product Length:** \_\_\_\_\_  
 63. **Product Width:** \_\_\_\_\_  
 64. **Product Height:** \_\_\_\_\_  
 65. **Product Depth:** \_\_\_\_\_  
 66. **Product Thickness:** \_\_\_\_\_  
 67. **Product Diameter:** \_\_\_\_\_  
 68. **Product Radius:** \_\_\_\_\_  
 69. **Product Circumference:** \_\_\_\_\_  
 70. **Product Surface:** \_\_\_\_\_  
 71. **Product Volume:** \_\_\_\_\_  
 72. **Product Weight:** \_\_\_\_\_  
 73. **Product Length:** \_\_\_\_\_  
 74. **Product Width:** \_\_\_\_\_  
 75. **Product Height:** \_\_\_\_\_  
 76. **Product Depth:** \_\_\_\_\_  
 77. **Product Thickness:** \_\_\_\_\_  
 78. **Product Diameter:** \_\_\_\_\_  
 79. **Product Radius:** \_\_\_\_\_  
 80. **Product Circumference:** \_\_\_\_\_  
 81. **Product Surface:** \_\_\_\_\_  
 82. **Product Volume:** \_\_\_\_\_  
 83. **Product Weight:** \_\_\_\_\_  
 84. **Product Length:** \_\_\_\_\_  
 85. **Product Width:** \_\_\_\_\_  
 86. **Product Height:** \_\_\_\_\_  
 87. **Product Depth:** \_\_\_\_\_  
 88. **Product Thickness:** \_\_\_\_\_  
 89. **Product Diameter:** \_\_\_\_\_  
 90. **Product Radius:** \_\_\_\_\_  
 91. **Product Circumference:** \_\_\_\_\_  
 92. **Product Surface:** \_\_\_\_\_  
 93. **Product Volume:** \_\_\_\_\_  
 94. **Product Weight:** \_\_\_\_\_  
 95. **Product Length:** \_\_\_\_\_  
 96. **Product Width:** \_\_\_\_\_  
 97. **Product Height:** \_\_\_\_\_  
 98. **Product Depth:** \_\_\_\_\_  
 99. **Product Thickness:** \_\_\_\_\_  
 100. **Product Diameter:** \_\_\_\_\_  
 101. **Product Radius:** \_\_\_\_\_  
 102. **Product Circumference:** \_\_\_\_\_  
 103. **Product Surface:** \_\_\_\_\_  
 104. **Product Volume:** \_\_\_\_\_  
 105. **Product Weight:** \_\_\_\_\_  
 106. **Product Length:** \_\_\_\_\_  
 107. **Product Width:** \_\_\_\_\_  
 108. **Product Height:** \_\_\_\_\_  
 109. **Product Depth:** \_\_\_\_\_  
 110. **Product Thickness:** \_\_\_\_\_  
 111. **Product Diameter:** \_\_\_\_\_  
 112. **Product Radius:** \_\_\_\_\_  
 113. **Product Circumference:** \_\_\_\_\_  
 114. **Product Surface:** \_\_\_\_\_  
 115. **Product Volume:** \_\_\_\_\_  
 116. **Product Weight:** \_\_\_\_\_  
 117. **Product Length:** \_\_\_\_\_  
 118. **Product Width:** \_\_\_\_\_  
 119. **Product Height:** \_\_\_\_\_  
 120. **Product Depth:** \_\_\_\_\_  
 121. **Product Thickness:** \_\_\_\_\_  
 122. **Product Diameter:** \_\_\_\_\_  
 123. **Product Radius:** \_\_\_\_\_  
 124. **Product Circumference:** \_\_\_\_\_  
 125. **Product Surface:** \_\_\_\_\_  
 126. **Product Volume:** \_\_\_\_\_  
 127. **Product Weight:** \_\_\_\_\_  
 128. **Product Length:** \_\_\_\_\_  
 129. **Product Width:** \_\_\_\_\_  
 130. **Product Height:** \_\_\_\_\_  
 131. **Product Depth:** \_\_\_\_\_  
 132. **Product Thickness:** \_\_\_\_\_  
 133. **Product Diameter:** \_\_\_\_\_  
 134. **Product Radius:** \_\_\_\_\_  
 135. **Product Circumference:** \_\_\_\_\_  
 136. **Product Surface:** \_\_\_\_\_  
 137. **Product Volume:** \_\_\_\_\_  
 138. **Product Weight:** \_\_\_\_\_  
 139. **Product Length:** \_\_\_\_\_  
 140. **Product Width:** \_\_\_\_\_  
 141. **Product Height:** \_\_\_\_\_  
 142. **Product Depth:** \_\_\_\_\_  
 143. **Product Thickness:** \_\_\_\_\_  
 144. **Product Diameter:** \_\_\_\_\_  
 145. **Product Radius:** \_\_\_\_\_  
 146. **Product Circumference:** \_\_\_\_\_  
 147. **Product Surface:** \_\_\_\_\_  
 148. **Product Volume:** \_\_\_\_\_  
 149. **Product Weight:** \_\_\_\_\_  
 150. **Product Length:** \_\_\_\_\_  
 151. **Product Width:** \_\_\_\_\_  
 152. **Product Height:** \_\_\_\_\_  
 153. **Product Depth:** \_\_\_\_\_  
 154. **Product Thickness:** \_\_\_\_\_  
 155. **Product Diameter:** \_\_\_\_\_  
 156. **Product Radius:** \_\_\_\_\_  
 157. **Product Circumference:** \_\_\_\_\_  
 158. **Product Surface:** \_\_\_\_\_  
 159. **Product Volume:** \_\_\_\_\_  
 160. **Product Weight:** \_\_\_\_\_  
 161. **Product Length:** \_\_\_\_\_  
 162. **Product Width:** \_\_\_\_\_  
 163. **Product Height:** \_\_\_\_\_  
 164. **Product Depth:** \_\_\_\_\_  
 165. **Product Thickness:** \_\_\_\_\_  
 166. **Product Diameter:** \_\_\_\_\_  
 167. **Product Radius:** \_\_\_\_\_  
 168. **Product Circumference:** \_\_\_\_\_  
 169. **Product Surface:** \_\_\_\_\_  
 170. **Product Volume:** \_\_\_\_\_  
 171. **Product Weight:** \_\_\_\_\_  
 172. **Product Length:** \_\_\_\_\_  
 173. **Product Width:** \_\_\_\_\_  
 174. **Product Height:** \_\_\_\_\_  
 175. **Product Depth:** \_\_\_\_\_  
 176. **Product Thickness:** \_\_\_\_\_  
 177. **Product Diameter:** \_\_\_\_\_  
 178. **Product Radius:** \_\_\_\_\_  
 179. **Product Circumference:** \_\_\_\_\_  
 180. **Product Surface:** \_\_\_\_\_  
 181. **Product Volume:** \_\_\_\_\_  
 182. **Product Weight:** \_\_\_\_\_  
 183. **Product Length:** \_\_\_\_\_  
 184. **Product Width:** \_\_\_\_\_  
 185. **Product Height:** \_\_\_\_\_  
 186. **Product Depth:** \_\_\_\_\_  
 187. **Product Thickness:** \_\_\_\_\_  
 188. **Product Diameter:** \_\_\_\_\_  
 189. **Product Radius:** \_\_\_\_\_  
 190. **Product Circumference:** \_\_\_\_\_  
 191. **Product Surface:** \_\_\_\_\_  
 192. **Product Volume:** \_\_\_\_\_  
 193. **Product Weight:** \_\_\_\_\_  
 194. **Product Length:** \_\_\_\_\_  
 195. **Product Width:** \_\_\_\_\_  
 196. **Product Height:** \_\_\_\_\_  
 197. **Product Depth:** \_\_\_\_\_  
 198. **Product Thickness:** \_\_\_\_\_  
 199. **Product Diameter:** \_\_\_\_\_  
 200. **Product Radius:** \_\_\_\_\_  
 201. **Product Circumference:** \_\_\_\_\_  
 202. **Product Surface:** \_\_\_\_\_  
 203. **Product Volume:** \_\_\_\_\_  
 204. **Product Weight:** \_\_\_\_\_  
 205. **Product Length:** \_\_\_\_\_  
 206. **Product Width:** \_\_\_\_\_  
 207. **Product Height:** \_\_\_\_\_  
 208. **Product Depth:** \_\_\_\_\_  
 209. **Product Thickness:** \_\_\_\_\_  
 210. **Product Diameter:** \_\_\_\_\_  
 211. **Product Radius:** \_\_\_\_\_  
 212. **Product Circumference:** \_\_\_\_\_  
 213. **Product Surface:** \_\_\_\_\_  
 214. **Product Volume:** \_\_\_\_\_  
 215. **Product Weight:** \_\_\_\_\_  
 216. **Product Length:** \_\_\_\_\_  
 217. **Product Width:** \_\_\_\_\_  
 218. **Product Height:** \_\_\_\_\_  
 219. **Product Depth:** \_\_\_\_\_  
 220.

# A-700







# GOW HASTINGS ARCHITECTS

1000 West 10th Avenue  
Suite 100  
Denver, CO 80202  
Tel: 303.733.1100  
Fax: 303.733.1101  
www.gowhastings.com

ARCHITECT'S TITLE & LICENSE  
Name: [blank]  
Title: [blank]  
License No.: [blank]  
Expiration Date: [blank]

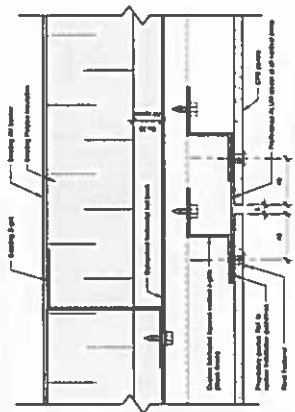
1. Project No. 1000  
2. Revision No. 1  
3. Date 10/10/10

Flaming College 8 Wing  
Framingham, MA  
10/10/10

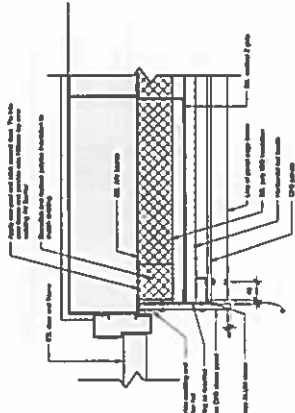
Plan Details

Scale: As Indicated  
Drawing Number: 1000  
Drawn By: [blank]  
Checked By: [blank]  
Approved By: [blank]

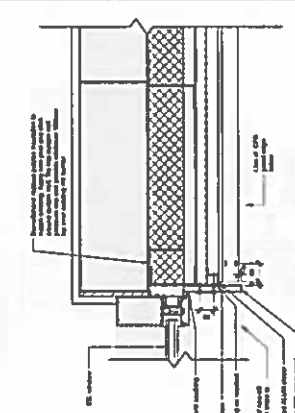
# A-701



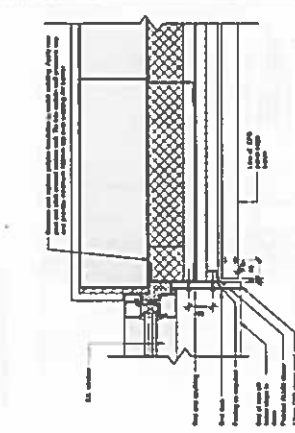
1. Typical Panel Attachment Detail 1:1.5



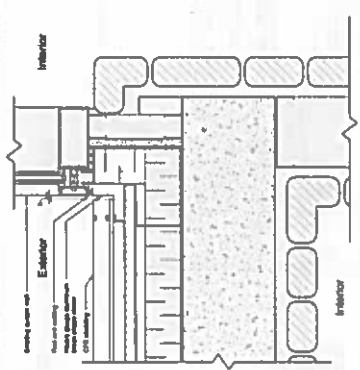
2. Plan Detail - Concrete Panel @ Door Jamb Typ. 1:1.5



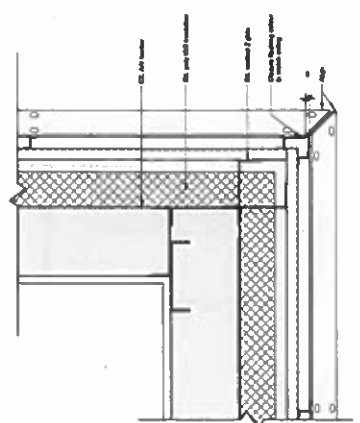
3. Elevating Detail - Concrete Panel @ Cornice Wall Jamb Typ. 1:1.5



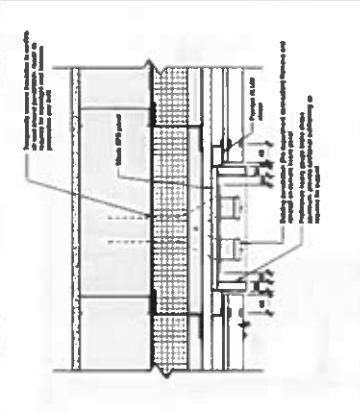
4. Girding Detail - Concrete Panel @ Window Jamb Typ. 1:1.5



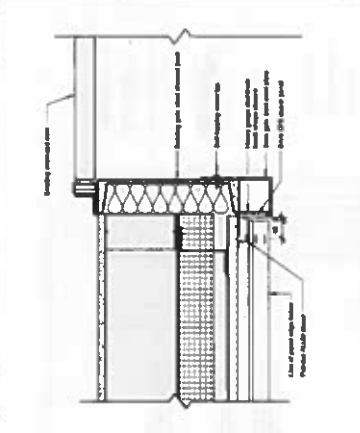
5. Plan Detail @ North Ventilation 1:1.5



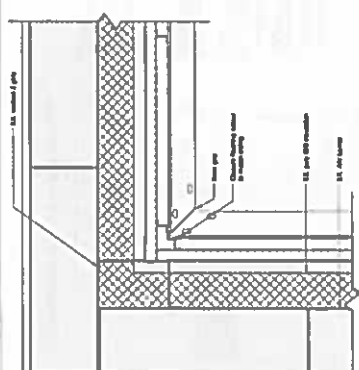
6. Wall Detail - Concrete Panel @ Outside Corner Typ. 1:1.5



7. Wall Detail - Concrete Panel Wall Penetration Typ. 1:1.5



8. Wall Detail - Concrete Panel @ Ex. Gutterside Corner Detail 1:1.5



9. Wall Detail - Concrete Panel @ Inside Corner Typ. 1:1.5



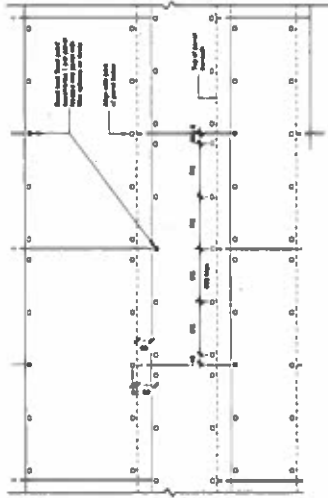
10. Plan Detail of Existing Cladding - Inside corner 1:1.5



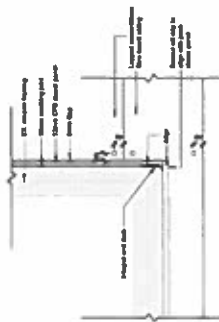
# GOW HASTINGS ARCHITECTS

1000 West 10th Street  
Suite 100  
Portland, OR 97204  
503.228.1234  
www.gowhastings.com

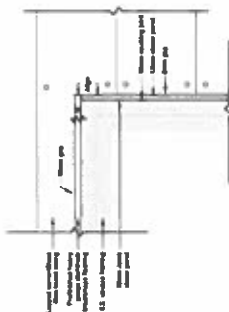
ARCHITECTS  
1000 West 10th Street  
Suite 100  
Portland, OR 97204  
503.228.1234  
www.gowhastings.com



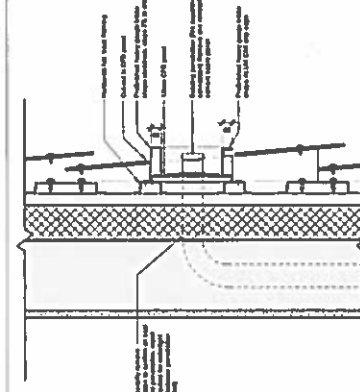
5 Wall Detail - Front Elevation Layout and Attachment Typ.  
1/10



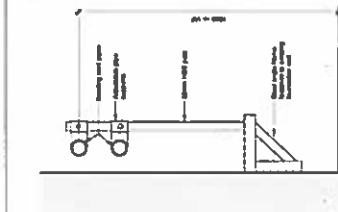
2 Glazing Detail - Sill Elevation Typ.  
1/10



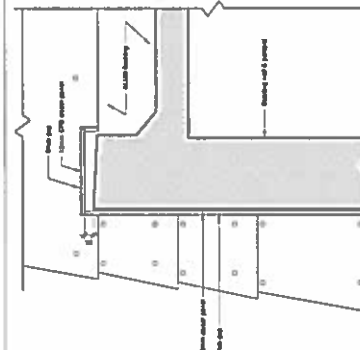
1 Glazing Detail - Head Flashing Elevation Typ.  
1/10



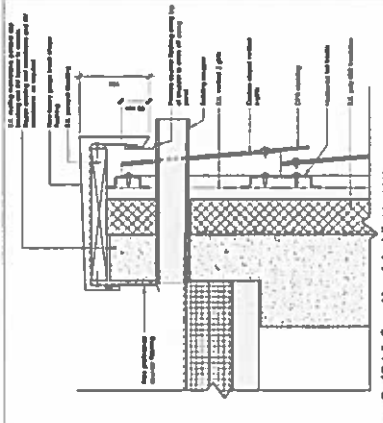
4 Wall Detail - Staircase Connection Penetration  
1/10



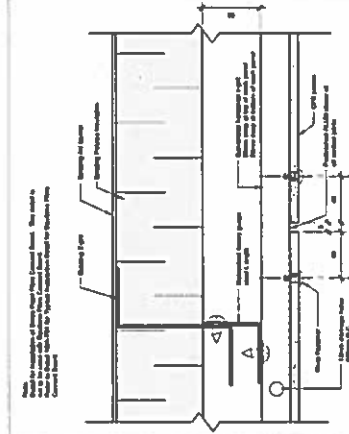
6 Section Detail @ Pipe Support  
1/10



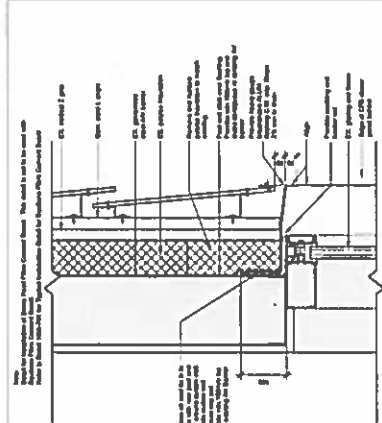
8 Elevation Detail - Corner @ Existing Parapet  
1/10



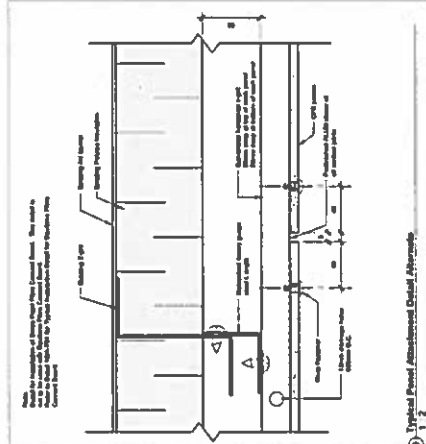
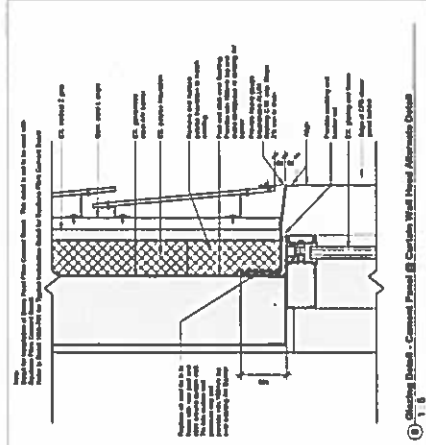
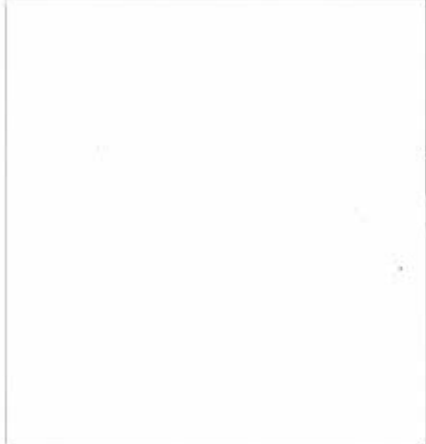
7 Roof Detail - Corroded Board at existing scupper  
1/10



3 Typical Front Attachment Detail Alternative  
1/10



9 Glazing Detail - Corroded Panel @ Existing Wall Head Alternative Detail  
1/10



No.	REVISIONS	DATE
1	Revised for Bid	10/01/10
2	100% Client Review	10/01/10

Planning College S Wing  
Renovation  
1000 West 10th Street  
Portland, OR 97204  
503.228.1234

Section and Elevation  
Details

Drawn By	Checked By
10/01/10	10/01/10

A-702

