



September 30, 2020

THE REGIONAL MUNICIPALITY OF YORK

ADDENDUM #3

T-20-122

FOR: Construction of a New Elevator and 2nd Floor AODA Washroom

LOCATION: 145 Harry Walker Parkway, Town of Newmarket, Ontario

CLOSING DATE: October 14, 2020, 1:00:00 P.M. (Eastern Time)

Bidders are requested to incorporate the changes/clarifications noted below to the above noted Bid Documents in your possession and be governed accordingly.

1. BIDDERS QUESTIONS (Q) AND REGION'S RESPONSES (A)

Q1. Is this job fully night time?

A1. Please refer to Supplementary Conditions – SC 1 Working Hours for Construction Contract

Q2. Is this job open for union and non-union trade?

A2. Yes

Q3 On Electrical Drawing E 101 Detail Shows LA1 Fixtures on Entire floor, and between Grid C ,D and 1X-1Y inter section shows E –(Existing), Are we replacing all light fixtures except shown E when replacing Ceiling tiles?

A3 Light fixtures and devices shown on E-101 with dashed lines are all existing, and to remain. Specific items to be removed/alterd are noted otherwise or with a 'D'.

Q4 There is transfer fan on equipment schedule on drawing, but It was not shown in the drawing where it will be installed.

A4 See detail 2 on drawing M101. Fan is within elevator machine room.

Q5 There is a new washroom with plumbing but not with exhaust system, is there any exhaust fan or duct for that washroom?

A5 See detail 4 on M101. New exhaust ductwork connected to existing exhaust fan.

Q6 There is some grilles and diffusers on schedule, but nowhere shown them in the drawings.

A6 Refer to drawing M101 for locations of grilles and diffusers.

Q7. Can you please provide the Construction Start, Substantial Completion and Total Completion Dates.

A7. Please refer to the Article A-3 Contract Time in the Tender Documents

Q8 Please include Earthtronics Specification Sheet

A8 Included in this addendum.

Q9 I am contacting you pertaining to this project with regards to electric hand dryers. I saw a reference to "hand dryer" on the drawings on page 461 but did not see any information regarding the specifications of such units. Please clarify

A9 There are no requirements for electric hand dryers for this project.

2. BIDDERS MEETING

In place of a Bidders meetings additional pictures have taken of the work areas on the first floor and Second floor.

Bidders shall acknowledge receipt of all addenda to this RFT prior to submitting their Bid. Bids that do not contain evidence of receipt of all addenda will be deemed to be "incomplete" and will not be accepted in the Bidding Website.

This addendum shall remain attached to and form part of the Contract Documents.

Yours truly,



Marie Kavanagh
Senior Purchasing Analyst
Procurement Office

Attachments: Additional Pictures of Work Area 1st First & 2nd Floor @ 145 Harry Walker Parkway
Earthtronics – from Addendum 2

LED Linear Tube

2200 Lumen T8 LED 4000K 48 inch Type A for Electronic Ballast - Coated



Electrical

Watt	15
Power Factor	> 0.90
Voltage	For use with electronic ballast
Base Type	G13
Operating Temperature Range	-20°C to 45°C

Light

Initial Lumens	2200
Lumens per Watt	147
Color Temperature	4000K
Color Rendering (CRI)	82
Beam Angle	300°

Agency Approvals

UL	Yes
DLC	Yes
RoHS	Yes
FCC	Yes, FCC 47 Part 18 CLASS A

Product Details

Warranty *	5 year (10 year limited)
Mercury Content	0
Diameter	1"
Nominal Length	48"
Rated Life	50,000 hours

PRODUCT DESCRIPTION

15 watt EarthBulb LED linear tube is available in 4000K with 300 degree beam angle. Great light output and perfect for replacement of T8 fluorescent tubes. This linear tube provides 2200 lumens and has a CRI of 82. This lamp is engineered for high lumen maintenance over its 50,000 hour rated. Simply "plug and play" on Instant Start electronic fluorescent ballasts. This product is shatterproof coated to conform to the Food Safety standards. Compatible with instant start, program start and rapid start T8 electronic ballast. Also compatible with fluorescent emergency ballasts. For use on Normal and Low Ballast Factor electronic ballasts only.*

PRODUCT FEATURES

- "Plug and play" on T8 systems utilizing Instant Start, program start and rapid start electronic ballast
- Easily retrofit T8, 4 foot tubes
- Provides 2200 lumens
- Chipset provides 4000K cool white light with a high color rendering rating of 82
- No Mercury, RoHS Certified
- Shatterproof coated to conform to the Food Safety standards

MODEL NUMBER: LT815840AG5C

ORDERING CODE: 10842

DLC PRODUCT ID: PLYUI1BE88K4

PACK SIZE: 25



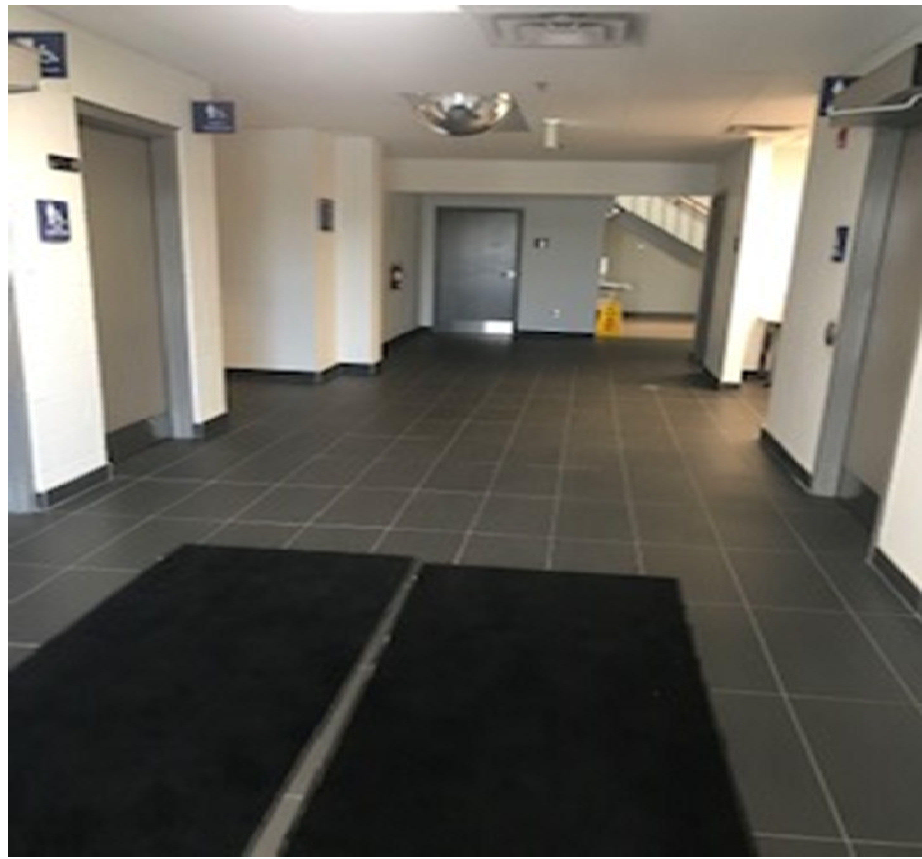
DIMENSIONS:

- Diameter: 1 inch
- Nominal Length: 48 inches

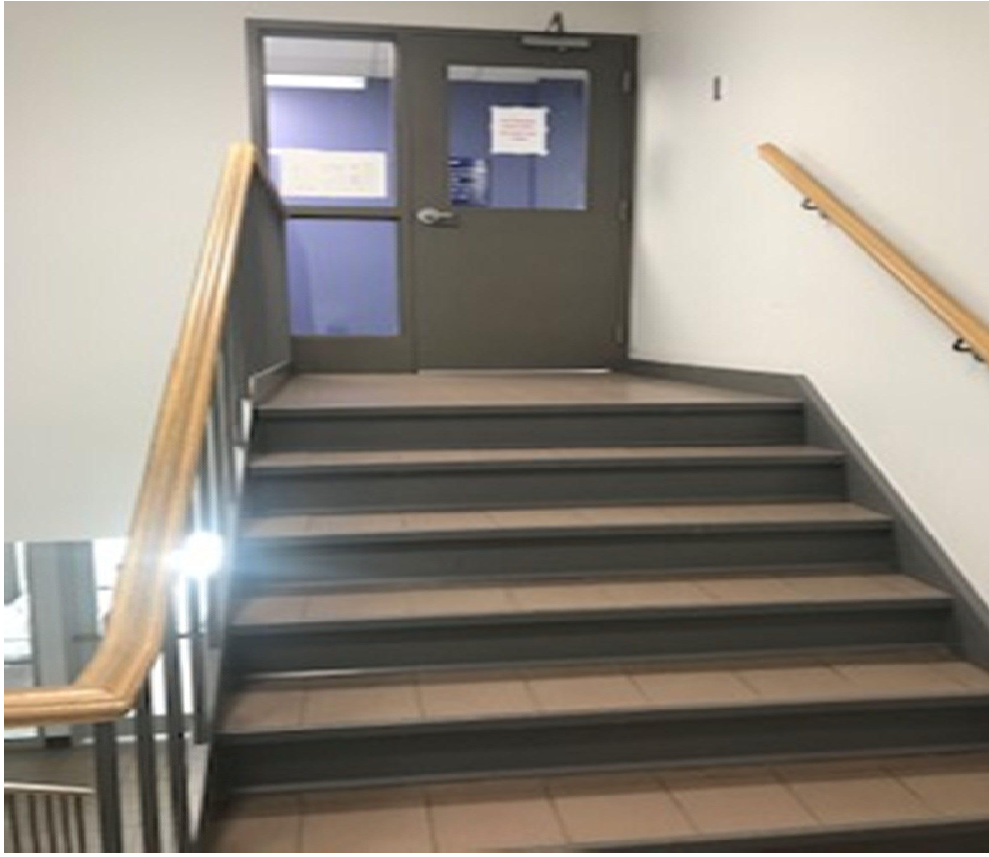
* Warranty void when lamp is used on high ballast factor electronics fluorescent ballast.

Corridor and Stairwells First Floor









Enclave on first floor Where Proposed Elevator to be located







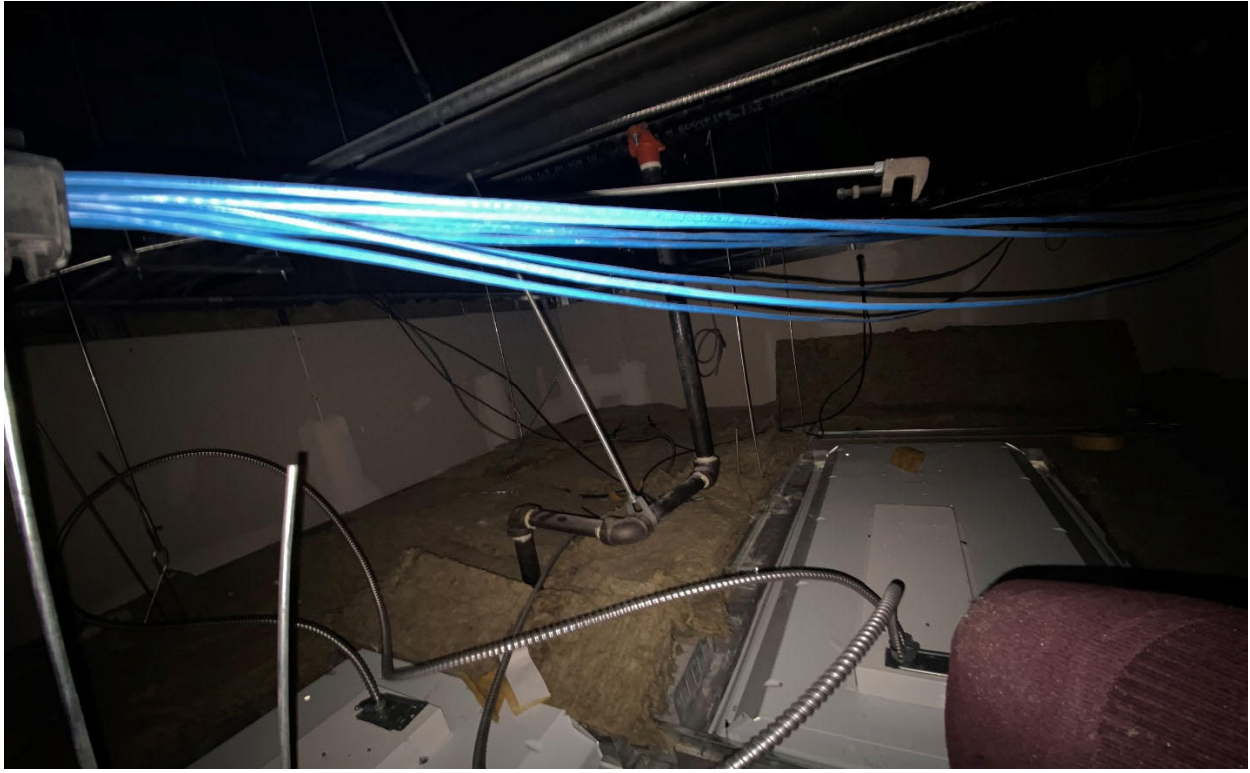
Area above Enclave ceiling on the first Floor where proposed elevator to be located











Wall in Second Floor Mechanical beside Enclave where Proposed Elevated Located





Men's Washroom Second Floor

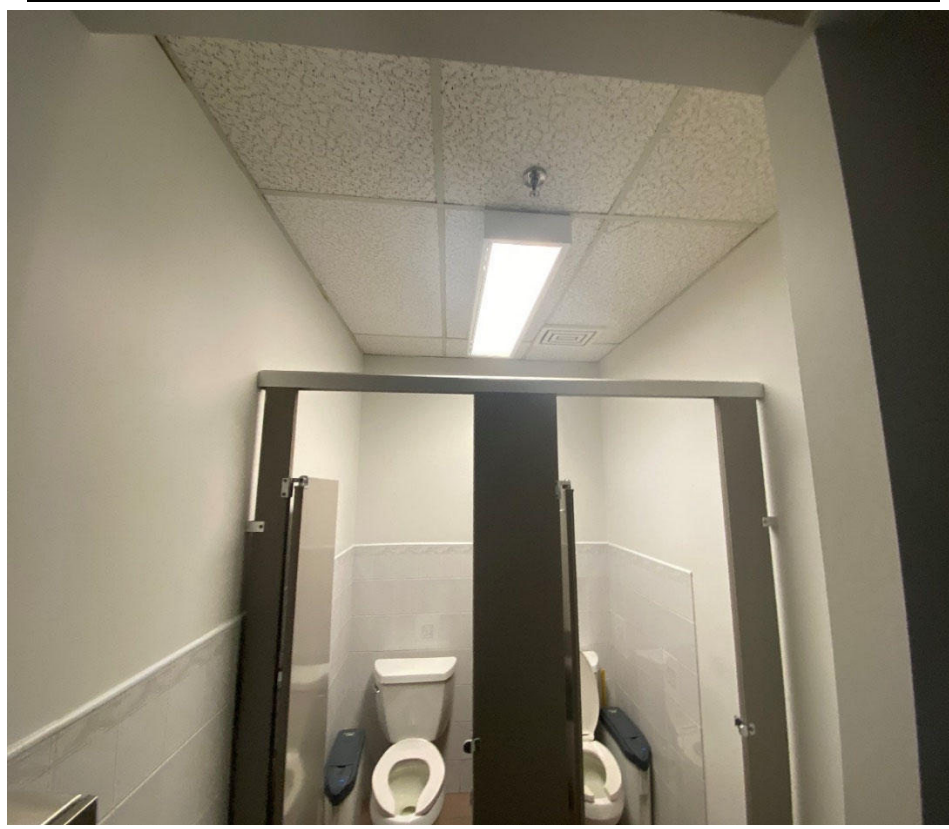








Women Washroom Second Floor







Corridor & Kitchenette Second Floor





