



**DURHAM CATHOLIC  
DISTRICT SCHOOL BOARD**  
*Learning and Living in Faith*

**Grandview Kids Centre**

**T19-02**

Issued by: Purchasing Services  
Durham Catholic District School Board  
652 Rossland Road West  
Oshawa, Ontario L1J 8M7

Complete and sign this document as indicated below to acknowledge the receipt of this Addendum and submit with Bid Documents.

Having carefully examined the Bid Documents for the above noted solicitation please be advised of the following clarification and/or additional information:

**Addendum Dated: April 29, 2019**

**Company Name:**

**Company Representative:**

**Signature:**

Grandview Kids

Tender # T19-02

HAA PROJECT NO. 19103

HOSSACK & ASSOCIATES ARCHITECTS

**ADDENDUM NO. 1**

**Issued by email April 29, 2019**

The following additions, deletions, modifications and clarifications issued herein are hereby an integral part of the Tender and Contract Documents. Minor Typographic or spelling mistakes in the Contract Documents which do not significantly affect the meaning of the sentence or phrase in which they occur may not necessarily be corrected by Addenda.

**GENERAL**

1. Ensure that all parties submitting bids are aware of this **Addendum No. 1** and its contents.
2. **Contents** Addendum No. 1 - in its entirety consists of the following:
  - .1 One (1) typed page of instructions.
  - .2 One (1) typed page Mechanical "Addendum" dated April 24, 2019 and One (1) reissued M-1 drawing issued by Moon-Matz Consulting Engineers.

**QUESTIONS & ANSWERS**

No Questions were received as of the question deadline on April 23, 2019

**MECHANICAL**

**Item 1: Mechanical**

- .1 Find attached One (1) typed page Mechanical "Addendum" dated April 24, 2019 and one (1) revised and reissued M-1 drawing issued by Moon-Matz Consulting Engineers.

**End of Addendum No. 1**



## **ADDENDUM**

Head Office: 1435 Hurontario Street, Mississauga, Ontario L5G 3H5 Tel: (905) 274-7556 Fax: (905) 274-5382

---

To: **Hossack & Associates Architects**  
**2150 Dunwin Drive, Unit 4**  
**Mississauga, ON**  
**L5L 5M8**

Ref. No.: **5820**

Date: **April 24, 2019**

**ADDENDUM NO. 01**

Attn: **Carolyn Smith**

[csmith@hossackarch.com](mailto:csmith@hossackarch.com)

From: **Milind Likhite**

Re: **GRANDVIEW KIDS CLINIC**  
**MONSIGNOR PAUL DWYER**  
**CATHOLIC HIGH SCHOOL**

---

This addendum refers to additions, deletions, modifications and clarifications which hereby become an integral part of the original Contract Documents and shall be read in conjunction with the same.

No consideration will be allowed for extras to the Contract due to the contractors, or sub-contractors, not being familiar with this Addendum. Acknowledgment of receipt of this Addendum is to be given in the space provided on the Tender form.

---

### **DESCRIPTION:**

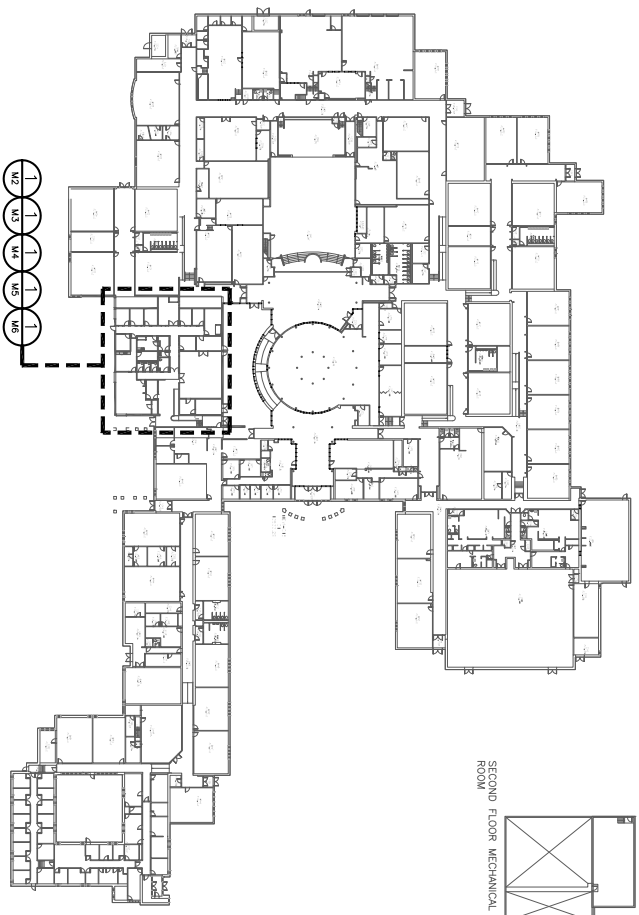
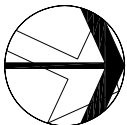
1. **BAS Monitoring & Control of proposed Split AC Units**  
**FC-5, FC-6, CU-1 and CU-2:**

Refer to revised mechanical drawing M-1. The existing school has a JCI Building Automation System (BAS).

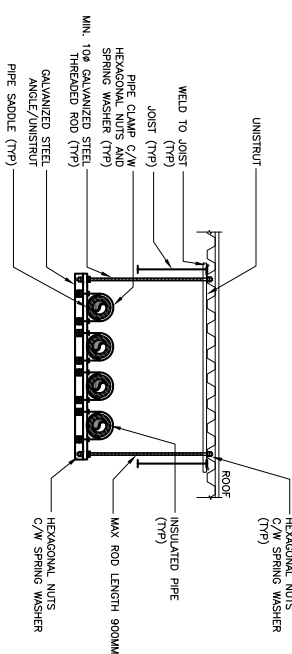
Integration of the 2 (two) new split type AC units specified for this project is required to provide the functionality as described below:

1. Remotely enable/disable of the unit from the BAS in addition to local room wired controller.
2. Scheduled start/stop from BAS.
3. Monitoring the operating status of the unit.
4. Failure alarms for each unit.
5. Monitoring the space air temperature.
6. Remote space temperature set point (adjustable) by BAS.
7. Include for a BACnet module for each split AC unit to allow transfer of all data points to BAS in future. This shall be supplied by the split AC system manufacturer and it shall be compatible for BACnet IP and/or BACnet MS/TP protocol.
8. All associated hardware, wiring and conduits to achieve the above design intent.

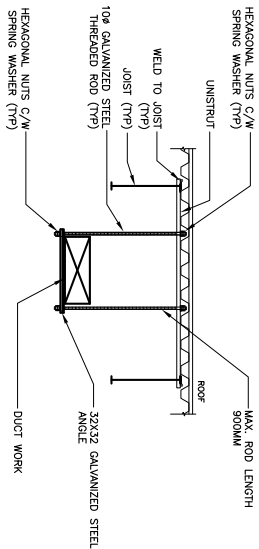
During construction phase, contractor shall coordinate exact control interface requirements with JCI prior to submission of shop drawings (for equipment and for the BAS work).



2  
M1  
KEY PLAN  
SCALE: NTS

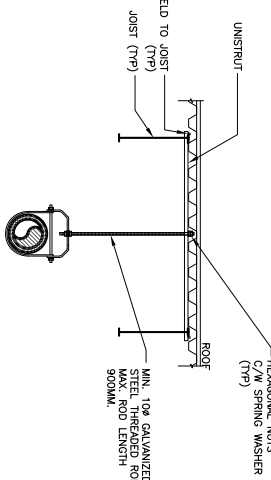


**NOTE:**  
PROVIDE ADDITIONAL STRUCTURAL MEMBERS AS REQUIRED TO  
SUIT SITE CONDITIONS. REFER TO PLANS FOR EXACT NUMBER OF  
PIPES.



**NOTE:** PROVIDE ADDITIONAL STRUCTURAL SUPPORT MEMBERS AS REQUIRED TO SUIT SITE CONDITIONS.

3 MULTIPLE PIPING INSTALLATION  
M1 SCALE: NTS



**NOTE:** PROVIDE ADDITIONAL STRUCTURAL MEMBERS AS REQUIRED TO SUIT SITE CONDITIONS. REFER TO PLANS FOR EXACT NUMBER OF PIPES

6 SINGLE PIPING INSTALLATION  
M1 SCALE: NTS

DIFFUSER AND GRILLE SCHEDULE				
TYPE NO.	TYPE	E.H.PRICE MODEL No.	FINISH	REMARKS
A	LINEAR BAR GRILLE	LBPM CORE 15A	ANODIZED ALUMINUM	
B	SUPPLY AIR DIFFUSER	SPD 300X300	POWER COATED PER ARCH REQUIREMENTS	
C	RETURN AIR GRILLE	SERIES 80	ANODIZED ALUMINUM	FRAME TO SUIT CEILING TYPE
D	SUPPLY AIR GRILLE	SERIES 0620	ANODIZED ALUMINUM	

1 SATELLITE MAP  
M1 SCALE: NTS



MECHANICAL DRAWING LIST	
DRAWING NO.	DRAWING TITLE
M1	MECHANICAL DRAWING LIST, LEGEND, SYMBOLS, KEY PLAN, DETAILS AND EQUIPMENT SCHEDULES
M2	GROUND FLOOR PLAN HVAC AND SPRINKLER DEMOLITION
M3	GROUND FLOOR PLAN HVAC AND SPRINKLER PROPOSED
M4	GROUND FLOOR PLAN PLUMBING, DRAINAGE AND GAS PIPING DEMOLITION
M5	GROUND FLOOR PLAN DRAINAGE PROPOSED
M6	GROUND FLOOR PLAN PLUMBING PROPOSED

**LEGEND**

- \*\*\*\*\* REMOVE EXISTING DUCTWORK/PIPING
- \_\_\_\_\_ EXISTING DUCTWORK/PIPING/EQUIPMENT
- \_\_\_\_\_ NEW DUCTWORK/PIPING/EQUIPMENT
- DOMESTIC HOT WATER RECIRCULATION
- DOMESTIC HOT WATER
- DOMESTIC COLD WATER
- PC— PUMPED CONDENSATE
- SP— SPRINKLER PIPE
- PENDANT SPRINKLER HEAD
- UPRIGHT SPRINKLER HEAD
- ⋈ GATE VALVE
- ⋈ GLOBE VALVE
- C/E CONNECT TO EXISTING
- C/FP CONNECT TO EXISTING PIPE
- FC FAN COIL
- BD BALANCING DAMPER
- E/A EXHAUST AIR
- EF EXHAUST FAN
- FD FLOOR DRAIN
- WC WATER CLOSET
- L LAVATORY
- MS MOP SINK
- FD FLOOR DRAIN
- F/D FIRE DAMPER
- C/W COMPLETE WITH
- DN DOWN
- EX EXISTING TO REMAIN
- CONTROL WIRING
- Ⓡ THERMOSTAT
- ACUSTIC INSULATION
- FFH FORCE FLOW HEATER
- CU CONDENSING UNIT
- A-200/220-200
- CFM
- SIZE
- TYPE

GENERAL NOTES:

1. THE DESIGN DOCUMENTS HAVE BEEN PREPARED ON THE BASIS OF INFORMATION OBTAINED FROM THE GENERAL SITE REVIEW AND FROM THE EXISTING DOCUMENTS. MAKE NECESSARY ADJUSTMENTS TO LOCATIONS OF EQUIPMENT, ADDITIONAL WORK, AND MATERIALS. UNDER THE CONDITIONS, MAKE ALLOWANCES FOR: ADDITIONAL, ELBOWS, FITTINGS, SUPPORTS, ETC., REQUIRED TO PROVIDE OFFSETS IN THE PIPING, ETC., TO SUIT EXISTING SITE CONDITIONS. NO EXTRAS WILL BE ALLOWED FOR THE INTENDED SCOPE OF WORK SHOWN IN THE TENDER DOCUMENTS.

2. PRIOR TO COMMENCING WORK, THOROUGHLY REVIEW AND VERIFY AT SITE SIZES AND DIMENSIONS OF ALL ELECTRICAL EQUIPMENT, POWER SUPPLY, AND ENSURE THAT THE NEW EQUIPMENT/COMPONENTS CAN BE INSTALLED TO PROVIDE A FULLY FUNCTIONAL, SAFE AND RELIABLE ELECTRICAL SYSTEM. CONSULTANTS OF DEFICIENCIES AFFECTING INTENDED EXECUTION OF WORK.
3. ADEQUATELY SUPPORT ALL EQUIPMENT AND DOWELWORK.
4. PROVIDE INSTALLATION TEMPORATION REPORT FROM MANUFACTURER/SUPPLIER.
5. ALLOW FOR ALL CUTTING/PATCHING/PAINTING AS REQUIRED TO FACILITATE THE WORK.
6. PRIOR TO EVOLUTION OF ANY ELECTRICALLY OPERATED MECHANICAL EQUIPMENT, OBTAIN THE POWER SAFETY. SEE WORK ON ELECTRICAL DRAWMANS.

NO.	DESCRIPTION	DATE	MOOD
1	RESULT FOR TENDER AND PERMIT		

**Moon-Matz Ltd.**  
Consulting Engineers  
2902 SOUTH SHERIDAN WAY,  
SUITE 300  
DRAVILL ON L6J 7L6  
TEL: (905) 274-7556  
FAX: (905) 274-5382  
E-Mail: [info@moon-mtz.com](mailto:info@moon-mtz.com)

GRANDVIEW KIDS CLINIC  
at Monsignor Paul Dwyer  
Catholic High School



**MECHANICAL DRAWING  
LIST, LEGEND, SYMBOLS,  
KEY PLAN, DETAILS AND  
EQUIPMENT SCHEDULES**

TENDER #:

**HOSSACK  
& ASSOCIATES  
ARCHITECTS**

NONE	19103
DATE	2010/03/16

DRAIN

CHECKED

PRINT DATE  
REVIT FILE