

**KAWARTHA PINE RIDGE DISTRICT SCHOOL BOARD**

**TENDER**

**PUR19-030-ITT**

**Kenner Collegiate Vocational Institute Science Room Upgrades**

**ADDENDUM NO. 2**

This addendum shall form an integral part of the Tender documents for the above noted Tender and shall be read in conjunction therewith. This addendum shall, however, take precedence over all requirements as it pertains to the particular and specific items noted below.

- |         |  |           |
|---------|--|-----------|
| 1. Add: | BBA – Addendum No. 1 – Dated April 9, 2019     | (2 Pages) |
|         | Mechanical/Electrical Addendum No. ME-1 by DES | (4 Pages) |

**END OF ADDENDUM NO. 2**



**BARRY BRYAN  
ASSOCIATES**

Architects  
Engineers  
Project Managers

Project No.: 18290  
Date: April 9, 2019  
Project: Kawartha Pine Ridge District School Board  
Kenner Collegiate Vocational Institute  
Science Upgrades  
633 Monaghan Road  
Peterborough, Ontario

The following information supplements and/or supersedes the original bid documents.

This Addendum forms part of the contract documents and is to be read, interpreted, and coordinated with all other parts. The cost of all contained herein is to be included in the contract sum. The following revisions supersede the information contained in the original drawings and specifications issued for the above-named project to the extent referenced and shall become part thereof.

## **0.0 General**

### **0.1 Notes:**

1. When adding the new Neutralizer Room, contractor is to protect the existing furniture and equipment in the adjacent Library Computer Room. Also, during construction of new door opening at Corridor outside Neutralizer Room, remove existing wall lighting and valence and reinstall. Patch and make good all finishes.

## **1.0 PUR19-030-ITT Invitation to Tender for Kenner Collegiate Vocational Institute, Science Room Upgrades:**

### **1.1 Appendix E- Science Room Specifications**

### **1.2 Section 06 20 00: Finish Carpentry:**

1. Under 1.2 Related Sections, delete ".2 Section 06 40 00 Architectural Woodwork." This section is not in the specifications, and is not required.

### **1.3 Section 10 11 16: Markerboards and Tackboards:**

1. Under 2.2 Products:
  1. Add "2.5 Interactive White Boards (IDEA Screens): .1 Legrand AV 9 (formerly Milestone AV Technologies), Da-Lite IDEA projection screens; wall mounted projection screen and marker board. Size shall be wide (16:10) format with viewing area 53" high x 84-3/4" wide, overall frame dimensions 55-3/4" x 85-1/2". The Interactive Dry Erase Application (IDEA) Screen surface consists of a proprietary projection surface permanently bonded to a magnetic substrate that allows use of dry erase markers, interactive stylus and touch interactivity. Projection surface to have gain of 2.5 and viewing half angle of 25 degrees. Frame will be 1" (25mm) thick with 3/8" (9.5mm) bezel in aluminum with a silver finish. Bezel thickness at the screen surface is 0.06" (1.5mm). IDEA screens include top mounting brackets, lower mounting brackets, 24" length marker tray, one set of dry erase markers, foam eraser, cleaning cloth and cleaning solution. Install as per manufacturer's instructions. Contact Legrand AV, 135 Bayfield Street, Suite 101C, Barrie, Ontario L4M 3B3, telephone: 1-877-345-4329, e-mail: [av.export@legrand.com](mailto:av.export@legrand.com).



250 Water Street,  
Suite 201  
Whitby, Ontario  
Canada  
L1N 0G5

Tele: 905-666-5252  
Toronto: 905-427-4495  
Fax: 905-666-5256  
Email: [bba@bba-archeng.com](mailto:bba@bba-archeng.com)  
[www.bba-archeng.com](http://www.bba-archeng.com)

**1.3 Section 10 11 16: Markerboards and Tackboards (Cont'd.):**

1. Under 2.2 Products (Cont'd.):

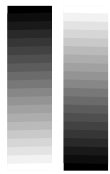
2. Add double sliding whiteboards, manufactured by ASI Visual Display Products. Double sliding whiteboards are Series 800 with 3/4" exposed metal frame in 4' high x 6' wide sizes, with 2" high horizontal line of cork display rail along the top. Provide continuous flat marker rail at bottom of whiteboards. Contact ASI Visual Display Products at 2210 Dunwin Drive, Mississauga, Ontario, L5L 1C7, telephone: 905-822-4287.

**2.0 Appendix F- Science Room Drawings**

**2.1 Mechanical/Electrical Addendum:**

1. See attached Mechanical/Electrical Addendum No. ME-1, from Durham Energy Specialist Limited.

END OF ADDENDUM NO. 1



# DES

## Durham Energy Specialist Limited

106-209 Dundas Street East, Whitby, Ontario L1N 7H8 905-430-7151 Fax: 905-430-7154  
Email: info@durhamenergy.com Web: www.durhamenergy.com

### Addendum No. ME-1

**Project Name:** KPRDSB Kenner CVI

**Date:** April 9, 2019

**Description:** Science Renovations

**From:** Luigi Conforti, P. Eng.  
Jeff Greer, P. Eng.

**Address:** 633 Monaghan Road  
Peterborough, ON

**DES Job No:** 19-222

**Client Contact:** John Moses, BBA

This addendum shall form an integral part of the TENDER.

#### Questions/Responses

- 1.1 **Question:** DWG E201 New Lighting Working Notes: Can you please verify the notes in regards to the new switches? Some of them don't match up with the notes assigned to them. For example: Biology lab 241 bottom left hand corner shows note 7 on symbol for 3 way dimmer switch but the note indicates it is a regular 3 way switch and preparation room 241A indicates note 5 on symbol for regular 3 way switch but note 5 says it is a dimmable 3 way switch.

**Response:** The intent is to provide one dimmable switch in the control panel with a regular 3-way at the other Entrance.

- 1.2 **Question:** DWG E201 New Lighting Working Notes: Note 2 indicates to provide new switches in control panel. Refer to control panel detail. Control panel detail on DWG E802 shows only (2) two switches inside the control panel but the control panel in physics lab 243 shows (4) four dimmer switches. Please verify quantity of switches in control panel. Please also confirm all dimmer switches whether single pole or three way are Leviton IP710-LFZ or alternate noted.

**Response:** Provide number of switches as per Floor Plan. Control panel shows general configuration of devices with the necessary mounting heights to meet Code. Correct, provide Leviton IP710-LFZ dimmer switches which can be wired as a 3-way switch with a regular style toggle switch.

#### Mechanical

- 1.3 Drawing M301

.1 Diffuser tag in Room 241A should read 2@ A-8"Ø-270 cfm

1.4 Drawing M801

- .1 Add the following sinks to accompany brass already identified in plumbing fixture schedule:
  - .1 LS-1: Orion (Watts) #ARLS-12 Single Bowl Lab Sink – molded virgin high density polyethylene – no ledge – 38 mm (1-1/2") integral molded threaded outlet. Nominal Dimensions 267mm (10-1/2") wide x 470mm (18-1/2") long x 279mm (11") high.
  - .2 LS-2: Orion (Watts) #ARLS-14-ADA Single Bowl Lab Sink – molded virgin high density polyethylene – no ledge – 38 mm (1-1/2") integral molded threaded outlet. Nominal Dimensions 375mm (14-3/4") wide x 527mm (20-3/4") long x 152mm (6") high.
  - .3 LS-3: Orion (Watts) #ARLS-13 Single Bowl Lab Sink – molded virgin high density polyethylene – no ledge – 38 mm (1-1/2") integral molded threaded outlet. Nominal Dimensions 470mm (18-1/2") wide x 470mm (18-1/2") long x 279mm (11") high.

**Electrical**

1.5 Drawing E201

- .1 Science Room 241 and 243
  - .1 Delete Working Note 11 as stated: No trench to be provided. All services to desks to be installed from below.
  - .2 Provide Panduit Pan-Way T45 10-foot raceway for video cable from Teacher's desk to ceiling. Provide conduit from Teacher's desk to wall from below and connect to Panduit raceway. Provide accessory for securing raceway through ceiling tile.
  - .3 Provide illuminated toggle switch for exhaust fan switch located at Teacher's desk.
  - .4 Provide separate emergency e-stop and keyed switch for panel to be mounted at Teacher's desk (items shall not be combined).
  - .5 Provide separate emergency e-stop and keyed switch for gas valve to be mounted at Teacher's desk (items shall not be combined).
  - .6 Provide power to smartboard from Panel H2 in lieu of dedicated Science Room panel.
- .2 Science Room 243
  - .1 Add 120V power to Exhaust Fan EF-11 complete with Working Note 13. Feed fan from Panel H2, Circuit 13.
- .3 Revise Working Note 13 to delete "one required for both fans". Provide dedicated junction box for each exhaust fan for controls interlock.

1.6 Drawing E801

- .1 Add exhaust fan switch to luminaire schedule. Equal to Hubbell HBL1201PL
- .2 Revise model of emergency e-stop button to compact model, twist to release, equal to ABB CE4T. Depth of e-stop shall not be greater than 30mm.
- .3 Provide keyed momentary switch with spring return for control of contactor. Equal to ABB M2SSK3-101 complete with MCBH-11.

1.7 Drawing E802

- .1 Refer to attached sketch for Classroom Control Panel Specification.

1.8 Drawing E803

- .1 Revise Circuit 13 from Panel H2 to indicate EF-11.
- .2 Provide two (2) 15A/1p breakers in Panel H2 at positions 16 and 18 for smartboard receptacles.

**Attachments: SK-E1 Classroom Control Panels Specification (1 - 8.5x11")**

TD: S/r: JLC

Cc:	John Moses	Barry Bryan Associates	jmoses@bba-archeng.com
	Nicholas Vallesterio	Barry Bryan Associates	nvallesterio@bba-archeng.com
	Earl Espinueva	Barry Bryan Associates	eespinueva@bba-archeng.com
	Nicole Bautista	Barry Bryan Associates	nbautista@bba-archeng.com

## CLASSROOM CONTROL PANELS

- .1 PROVIDE SURFACE MOUNTED MODULAR CONTROL PANELS AS DETAILED ON THE DRAWINGS AND SPECIFIED HEREIN AS MANUFACTURED BY INTERSPEC SYSTEM LIMITED, ROSEMONT, ONTARIO (705) 435-0294 AND REPRESENTED BY PP ENTERPRISES (416) 267-8484. SPECIFIED MANUFACTURER'S PRODUCTS ESTABLISH MINIMUM STANDARDS AND SHALL BE BASE BID; OTHER MANUFACTURER'S PRODUCTS SHALL BE BID AS AN ALTERNATIVE PRICE PROPOSAL BY THE CONTRACTOR.
- .2 MODULAR CONTROLS PANELS SHALL BE CONSTRUCTED OF STRUCTURALLY SOUND 6063 T5 ALLOY SATIN ANODIZED ALUMINUM FRAME. 0.80 MM (1/32") THICK; WITH HIGH PRESSURE PLASTIC LAMINATE FACED PANELS OF LIGHTWEIGHT PARTICLE CORE AND 0.50 MM (1/64") THICK PLASTIC LAMINATED BACKING SHEET. PLASTIC LAMINATE COLOUR AS SELECTED BY THE ARCHITECT FROM ARBORITE OR FORMICA, FURNITURE FINISH, FROM MANUFACTURER'S STANDARD COLOUR RANGE. COMPLETE ASSEMBLY TO MEET FLAME SPREAD RATINGS IN AREA USED.
- .3 UNITS TO BE COMPLETE WITH BACK BOXES FABRICATED FROM HEAVY GAUGE STAIN COAT STEEL WITH SUITABLE BARRIERS AND CONTINUOUS KNOCKOUTS. SATIN ANODIZED FACE PLATES SHALL BE PREPUNCHED TO ACCEPT DETAILED COMPONENTS.
- .4 ALL PANELS SHALL BE VANDAL RESISTANT AND REMOVABLE WITH SPECIAL TOOLS FOR SERVICE ACCESS.
- .5 FABRICATE UNITS IN ACCORDANCE WITH REVIEWED SHOP DRAWINGS WITH EXTRUDED ALUMINUM FRAMES AND SOLID PLASTICS LAMINATE FACE PANELS.
- .6 PANELS TO BE REMOVABLE FROM ALUMINUM FRAMES.
- .7 FRONT PANELS TO HAVE COLOUR FINISH SELECTED BY ARCHITECT.
- .8 PANELS TO HAVE ALL OPENINGS, MOUNTING HARDWARE, ETC., FOR SERVICES AS REQUIRED FOR INSTALLATION OF MECHANICAL AND ELECTRICAL SERVICES BY DIVISION 15 AND 16.
- .9 PANELS TO BE MOUNTED 100MM (4") ABOVE THE FLOOR AND EXTEND 100MM (4") ABOVE THE CEILING. SUBMIT TABLE WITH SHOP DRAWING SUBMISSION CONFIRMING PANEL HEIGHT FOR EACH ROOM. SUBMISSION SHALL ALSO INCLUDE DEVICES FOR EACH INDIVIDUAL PANEL.
- .10 ACCEPTABLE EQUAL IS AS FOLLOWS:
  - .1 ALSPEC (SISTER COMPANY OF INTERSPEC), 1-705-435-3780
  - .2 WOLFE ARCHITECTURAL  
WORKS 587 HANLAN ROAD  
WOODBIDGE, ONTARIO  
CANADA L4L 4R8  
TEL: 905-266-1010  
FAX: 905-266-1015  
M: 416-458-8895  
INFO@WOLFEWORKS.CA

DESIGN AND DETAILS SHOWN ON THIS DRAWING OR ASSOCIATED DOCUMENTATION ARE PRODUCED BY AND THE PROPERTY OF DURHAM ENERGY SPECIALIST LTD. COPY IN WHOLE OR PART IS PROHIBITED. THE CONTRACTOR MUST CHECK AND BE RESPONSIBLE FOR SITE CONDITIONS THAT MAY DIFFER FROM THESE PLANS AND NOTIFY DURHAM ENERGY SPECIALIST LTD. OF SAME.

### REVISIONS

No.	DESCRIPTION	DATE
1	ADDENDUM No. ME-1	APR 9 2019

 **DURHAM ENERGY  
SPECIALIST LIMITED**

**CONSULTING ENGINEERS**

PH:(905)430-7151 FAX:(905)430-7154  
106-209 DUNDAS STREET EAST, WHITBY ON  
info@durhamenergy.com / www.durhamenergy.com

KAWARTHA PINE RIDGE  
DISTRICT SCHOOL BOARD

### KENNER COLLEGIATE VOCATIONAL INSTITUTE SCIENCE UPGRADES

633 MONAGHAN ROAD  
PETERBOROUGH, ON

DATE:	APRIL 2019	SCALE:	NTS
DRAWN BY:	MRC	CHECKED BY:	LC
DES PROJECT NO.:	19-222	DES DWG NO.:	E802
NOTE:		SHEET SIZE:	A

CLASSROOM CONTROL PANELS  
SPECIFICATIONS

SK-E1