



**BARRY BRYAN
ASSOCIATES**

Architects
Engineers
Project Managers



201-250 Water Street,
Whitby, Ontario
Canada
L1N 0G5

Tele: 905-666-5252
Toronto: 905-427-4495
Fax: 905-666-5256
Email: bba@bba-archeng.com
www.bba-archeng.com

Addendum No. 2

Page 1 of 1

Project No.: 19037
Date: April 8, 2019
Project: Durham College Whitby Farming Expansion
1610 Champlain Ave, Whitby, Ontario

The following information supplements and/or supersedes the bid documents issued on March 19, 2019. This Addendum forms part of the contract documents and is to be read, interpreted, and coordinated with all other parts. The cost of all contained herein is to be included in the contract sum. The following revisions supersede the information contained in the original drawings and specifications issued for the above-named project to the extent referenced and shall become part thereof.

GENERAL ADDENDUM ITEMS

- 1.1 The following dates are outdoor events held at the Centre for Food (CFF). The awarded General Contractor is to ensure no work shall be going on during the following date and time. The site to be left tidy for these events.

May 23 from 6:00pm-11:00pm
June 7 from 2:00pm-11:00pm
June 11 from 11:00am-9:00pm

- 1.2 Revised Site Plan A102:
a) Additional new sanitary invert and main indicated on 1/A102, along with associated demolition as noted on 2/A102.
b) Site legend added for drawing clarity.

- 1.3 New Civil Site Plan drawing CV-1

SPECIFICATIONS

- 1.4 BASE BID

The Base Bid for this project includes the following:
All Utilities and Services
All Foundation work
All Site Restoration
Post Harvest Building

MECHANICAL/ELECTRICAL

- 1.5 Refer to MEI Addendum No. 1 date April 5 2019 attached outlining mechanical and electrical revisions to the contract documents.

END OF ADDENDUM NO. 2

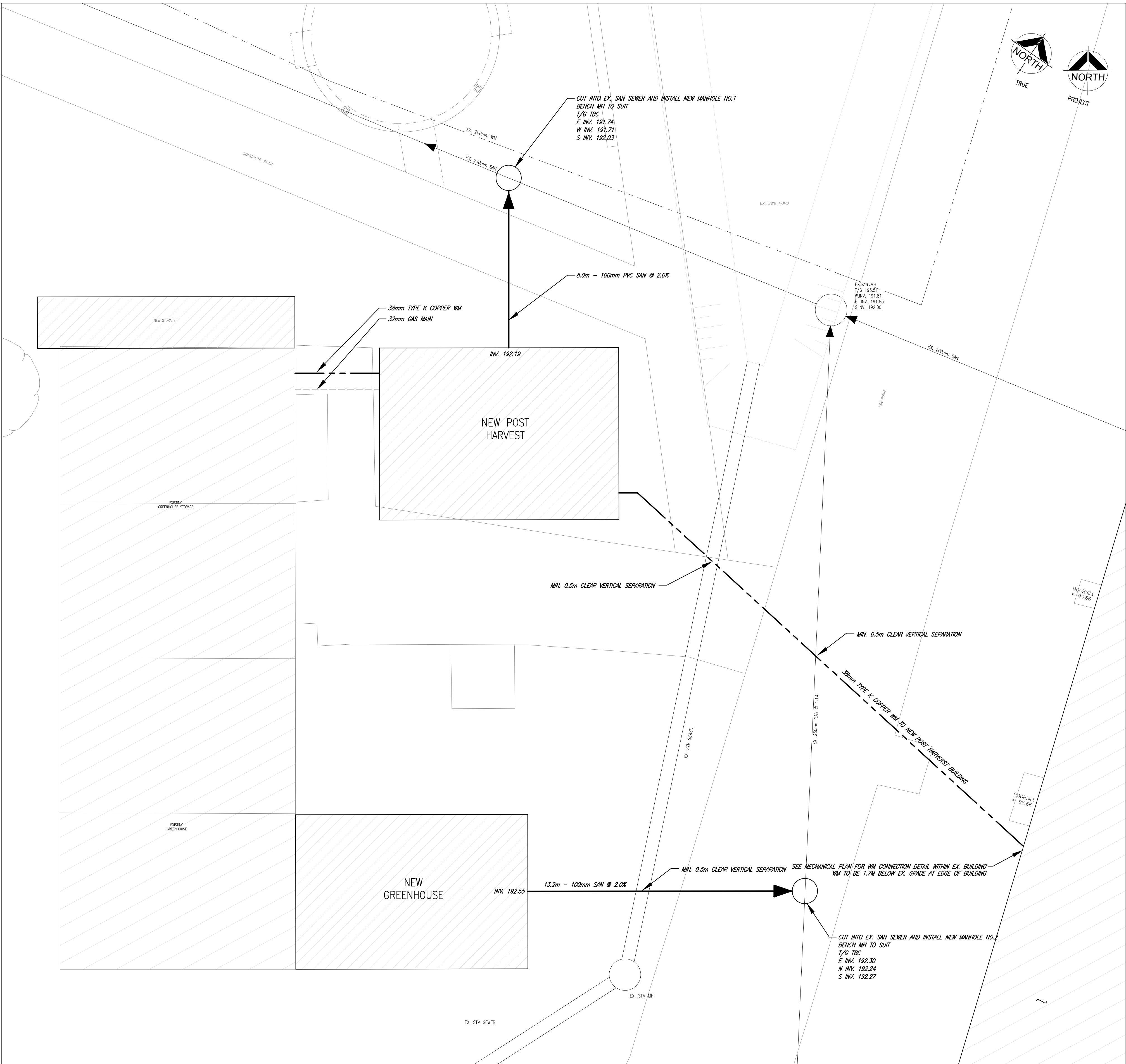
Barry Bryan Associates
Architects, Engineers, Project Managers

Crystal Gardner, OAA

CG/nb

Attachments: Drawings No. A102 and CV-1 (2 Pages)
MEI Addendum ADDM1 (2 Pages)

- NOTE:
CONTRACTOR TO CONTACT MGM CONSULTING INC. IMMEDIATELY SHOULD THERE BE ANY CONFLICTS BETWEEN EXISTING CONDITIONS AND PROPOSED GRADING AND/OR SERVICING DESIGN, OR CONFLICTS IN CONSTRUCTING THE WORK AS PER THE INTENT OF THE APPROVED DESIGN PRIOR TO CONSTRUCTION.
- NOTE:
1. ALL WORK TO CONFORM TO THE LATEST MUNICIPAL STANDARDS AND SPECIFICATIONS AS WELL AS THE LATEST ADOPTED ONTARIO PROVINCIAL STANDARD DRAWINGS AND SPECIFICATIONS.
2. ALL DISTURBED AREAS TO BE RESTORED TO ORIGINAL CONDITION OR BETTER TO SATISFACTION OF THE MUNICIPALITY AND MGM CONSULTING INC.
3. CONTRACTOR TO LOCATE AND PROTECT ALL EXISTING SERVICES AND UTILITIES PRIOR TO AND DURING CONSTRUCTION
4. CONTRACTOR TO LOCATE AND CONFIRM ALL EXISTING UTILITIES AND SERVICE INFORMATION PRIOR TO CONSTRUCTION
5. CONTRACTOR TO ENSURE ADEQUATE CLEARANCE FROM ALL EXISTING SERVICES AND UTILITIES
6. CONTRACTOR TO CONFIRM ALL EXISTING INVERTS PRIOR TO INTERNAL SERVICING.
7. CONTRACTOR TO CONFIRM THE PAVEMENT STRUCTURE THICKNESS' BASED ON THE GEOTECHNICAL REPORT.
8. WATERMAIN TO BE INSTALLED WITH A 1.8m MINIMUM COVER.
9. ALL SEWER AND WATERMAIN CROSSINGS TO HAVE A MINIMUM VERTICAL SEPARATION OF 0.5m.
10. SANITARY MANHOLES PER OPSD 701.010, GRATE PER OPSD 401.010.



DO NOT SCALE THE DRAWINGS
CHECK AND VERIFY ALL DIMENSIONS AT THE SITE.

ALL DRAWINGS, SPECIFICATIONS AND RELATED DOCUMENTS ARE THE COPYRIGHT PROPERTY OF THE CONSULTANT AND MUST BE RETURNED UPON REQUEST. REPRODUCTION OF DRAWINGS IN PART OR WHOLE WITHOUT THE PERMISSION OF THE CONSULTANT IS FORBIDDEN.

DRAWINGS ARE NOT TO BE USED FOR CONSTRUCTION UNTIL SIGNED AND SEALED BY THE CONSULTANT.

NO.	ISSUES	DATE	BY
1	ISSUED FOR PERMIT	29/03/19	JB
2	ISSUED FOR ADDENDUM 1	03/04/19	JB

NO.	REVISIONS	DATE	BY
-----	-----------	------	----

MGM
CONSULTING INC

Consulting Engineering & Project Management
400 Bronte Street South
Suite 201
Milton, Ontario
L9T 0H7

Tel: (905) 667-8878
Fax: (905) 875-1339
Email: mgm@mgm.on.ca
www.mgm.on.ca

GENERAL NOTES

- THIS DRAWING IS THE PROPERTY OF MADONNA ENGINEERING INC. AND CANNOT BE REPRODUCED WITHOUT WRITTEN PERMISSION.
- ALL MEASUREMENTS MUST BE VERIFIED ON SITE BY CONTRACTOR AND REPORT ANY DISCREPANCIES TO MADONNA ENGINEERING INC. BEFORE PROCEEDING WITH THE WORK.
- DO NOT SCALE DRAWINGS.
- THIS DRAWING SHALL NOT BE USED FOR CONSTRUCTION UNLESS NOTED AS "ISSUED FOR CONSTRUCTION" BELOW.

PROJECT:

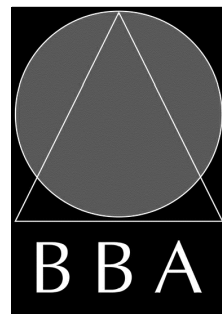
**Weston Farming
Expansion**

1610 CHAMPLAIN AVENUE
WHITBY, ONTARIO
L1N 9B2

DURHAM COLLEGE

DRAWING:

SERVICING PLAN



**BARRY BRYAN
ASSOCIATES**

Architects
Engineers
Project Managers

250 Water Street
Suite 201
Whitby, Ontario
L1N 0G5

Tel: (905) 666-5252
Fax: (905) 666-5256
e-mail: bba@bba-archeng.com



DESIGN BY:
JB

DOC CONTROL
DATE:

DRAWN BY:
JB

% COMPLETE

CHECKED BY:
JB

INITIAL

DATE:
MAR. 2019

SCALE:
1:150

FILE:

PROJECT NO:

2019-20

DRAWING NO:

CV-1

SITE LEGEND

- CB CATCH BASIN
- HP HYDRO POLE
- LS LIGHT STANDARD
- EXISTING BUILDING
- PROPOSED BUILDING
- MH MANHOLE

DEMOLITION NOTES

- 1 REMOVE EXISTING ASPHALT
- 2 SAWCUT - REMOVE ASPHALT UP TO THIS POINT; FOR 300mm BEYOND SAWCUT, GRIND AWAY ASPHALT TO A DEPTH OF 40mm FOR NEW ASPHALT LAP JOINT
- 3 REMOVE AND SALVAGE PAVING STONES FOR REUSE
- 4 REMOVE PAVING STONES UP TO THIS POINT
- 5 REMOVE AND SALVAGE PAVING STONES FOR REUSE; STORE AS DIRECTED BY COLLEGE
- 6 EXISTING GREENHOUSE TO BE REMOVED FOR REUSE BY COLLEGE; STORE ON SITE WHERE DIRECTED BY COLLEGE STAFF
- 7 EXISTING BOULDERS; TO BE MOVED AND REPLACED AS NECESSARY FOR SITE WORK
- 8 REMOVE EXISTING SOD AS REQUIRED FOR NEW CONSTRUCTION AND SITE WORK - SEE MECHANICAL AND ELECTRICAL DRAWINGS
- 9 CORE EXISTING CONCRETE SLAB ON GRADE FOR NEW WATER MAIN - SEE MECHANICAL DRAWINGS
- 10 CORE EXISTING CONCRETE SLAB ON GRADE FOR NEW ELECTRICAL CONNECTION - SEE ELECTRICAL DRAWINGS
- 11 REMOVE EXISTING ASPHALT(C/W SAWCUTS) THROUGH FIRE ROUTE AS REQUIRED FOR SITE WORK - SEE MECHANICAL AND ELECTRICAL DRAWINGS; EXCAVATION THROUGH FIRE ROUTE TO BE COMPLETED AFTER HOURS AND ACCESS MAINTAINED THROUGH WORKING HOURS

PROPOSED LAYOUT NOTES

1. REPLACE DAMAGED SOD AROUND NEW WORK
2. NEW ASPHALT TO LAP WITH EXISTING ASPHALT TO A LEVEL TRANSITION BETWEEN THE TWO
3. PRE-FAB SHIPPING CONTAINER BY FREIGHT FARM, ZIPGROW INC., OR APPROVED EQUIVALENT

DO NOT SCALE THE DRAWINGS
CHECK AND VERIFY ALL DIMENSIONS AT THE SITE.

ALL DRAWINGS, SPECIFICATIONS AND RELATED DOCUMENTS ARE THE
COPYRIGHT PROPERTY OF THE CONSULTANT AND MUST BE RETURNED
UPON REQUEST. REPRODUCTION OF DRAWINGS IN PART OR WHOLE
WITHOUT THE PERMISSION OF THE CONSULTANT IS FORBIDDEN.

DRAWINGS ARE NOT TO BE USED FOR CONSTRUCTION UNTIL SIGNED
AND SEALED BY THE CONSULTANT.



NO.	ISSUES	DATE	BY
1	80% CLIENT REVIEW	MAR 21 2019	BBA
2	ISSUED FOR PERMIT/TENDER	MAR 29 2019	BBA
3	ISSUED FOR ADDENDUM 1	APR 3 2019	BBA

NO.	REVISIONS	DATE	BY

PROJECT:

Weston Farming
Expansion

1610 CHAMPLAIN AVENUE
WHITBY, ONTARIO
L1N 9B2
DURHAM COLLEGE

DRAWING:

PART SITE PLANS
DEMO & NEW



BARRY BRYAN
ASSOCIATES

Architects
Engineers
Project Managers

250 Water Street
Suite 201
Whitby, Ontario
L1N 0G5

Tel: (905) 666-6252
Fax: (905) 666-6256
e-mail: bba@bba-archeng.com



DESIGN BY: CG	DOC CONTROL: DATE:
DRAWN BY: AF	% COMPLETE:
CHECKED BY: CM/CE/DM	INITIAL:

DATE:
MAR. 2019

SCALE:
AS NOTED

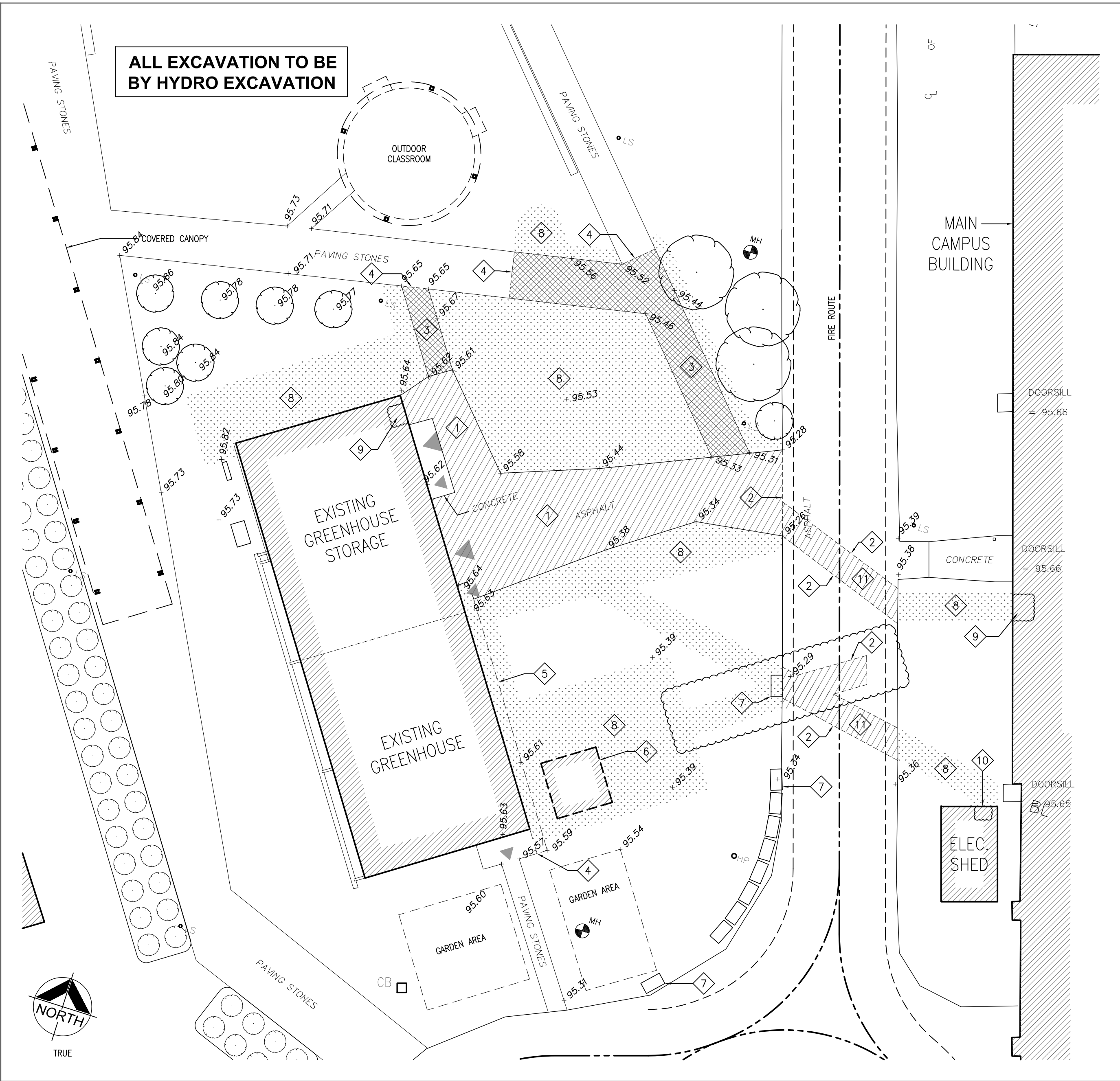
FILE:

PROJECT NO:

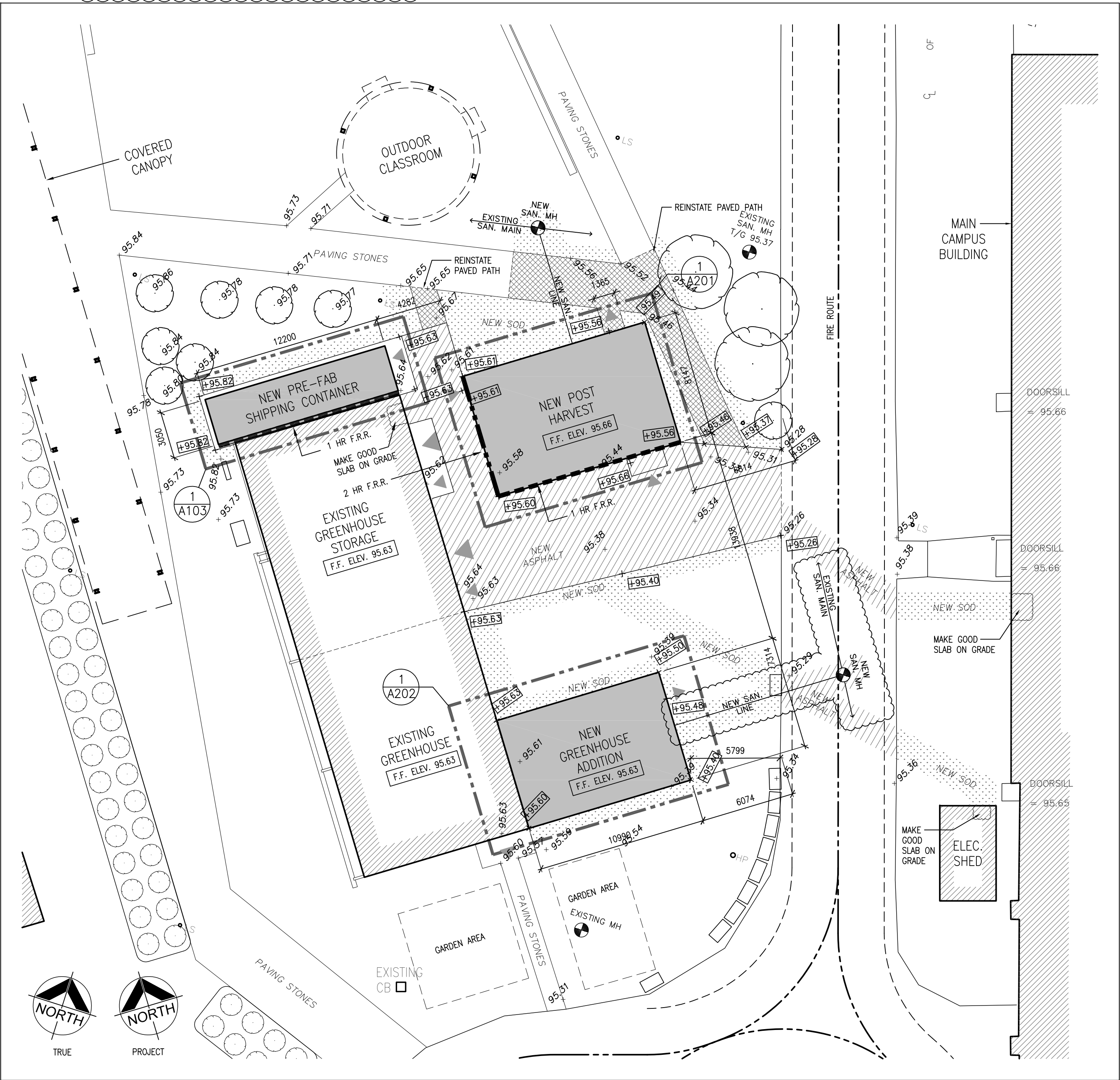
19037

DRAWING NO:

A102



2 PART SITE PLAN - DEMOLITION
A102 1:200



1 PART SITE PLAN - NEW
A102 1:200

Weston Farming Expansion
1610 Champlain Ave.
Whitby, ON
Addendum
ADDM1



MADONNA ENGINEERING INC.
93 Woodstream Blvd, Unit 10
Woodbridge, Ontario
L4L 7Y7

T: (905) 265-1911

F: (905) 265-1998

To: Barry Bryan Associates
250 Water St., Suite 201
Whitby, Ontario L1N 0G5

From: Madonna Engineering Inc.
Jeremy Hogan

Phone: 905-666-5252

Date: April 5, 2019

Re: ADDM1

CC: Anton Freundorfer

Attn: Crystal Gardner

Project No.: 19-0028

☐ URGENT

☒ FOR REVIEW

☐ PLEASE COMMENT

☐ PLEASE REPLY

☐ BY HAND

☒ BY EMAIL

☐ BY COURIER

☐ BY FAX

☐ BY PICK-UP

This Addendum ADDM1 forms part of the contract documents.

1. Reference

1. Drawing, M-6, Mechanical Schedules, Rev. 04, April 5, 2019. Not issued with this ADDM1. Refer to sketch SKM-ADDM1-M6.1.

2. Description

1. SKM-ADDM1-M6.1:

1. Addition of S2 and S3 to Plumbing Fixture Schedule.

3. Reason for Revision


1. Clarification.

End of ADDM1

PLUMBING FIXTURE SCHEDULE

SYMBOL	FIXTURES	PIPE CONNECTION					REF.
	SPECIFICATION	TRAP	COLD WATER	HOT WATER	DRAIN	VENT	
S1	<p>HAND SINK</p> <p>NOVANNI #7501-SH 711 X 711 MM (28 X 28") SINGLE STAINLESS STEEL UTILITY SINK ON LEGS, 711 X 711 MM (28 X 28 IN), 304 TYPE, 16 GAUGE, SATIN FINISH, COVED FRONT TO BACK, 203 MM (8 IN) BACKSPLASH, ROUNDED RIM, STAINLESS STEEL LEGS WITH ADJUSTABLE FEET, 89 MM (3 1/2 IN) CUP DRAIN ASSEMBLY SITUATED IN CENTER OF BOWL. PREDRILLED BACKSPLASH HAS SPECIFIED FAUCET.</p> <p>ZURN #Z841B4-XL WALL MOUNT, TWO HANDLE FAUCET, LOW LEAD, CAST BRASS BODY, LONG SWIVEL INLETS, 102 TO 213 MM (4 TO 8 3/8 IN) CENTER, CERAMIC DISC CARTRIDGES, POLISHED CHROME FINISH, 102 MM (4 IN) VANDAL-RESISTANT COLORCODED METAL WRIST BLADE HANDLES, 137 MM (5 3/8 IN) SWING/RIGID GOOSENECK WITH 8.3 L/MIN. (2.2 USGPM) PRESSURE COMPENSATING AERATOR, INCORPORATED CHECKSTOPS, 13 MM (1/2 IN) NPT FEMALE INLETS.</p> <p>ZURN #Z8702-9BD 38 MM (1 1/2") CAST BRASS ADJUSTABLE P-TRAP, 38 MM (1 1/2 IN) WITH CLEANOUT, DEEP SEAL FLANGE, POLISHED CHROME FINISH.</p>	1-1/2"Ø	1/2"Ø	1/2"Ø	1-1/2"Ø	1-1/4"Ø	ETX-1
4							NOTES
							1. INS
							2. INS
							RE
S2	<p>TRIPLE BASIN SINK</p> <p>NOVANNI #7511-SH 1915 X 700 MM (75-3/8" X 27-5/8") TRIPLE BOWL STAINLESS STEEL SCULLERY SINK ON LEGS, 304 TYPE, 16 GAUGE, SATIN FINISH, COVED FRONT TO BACK, 203 MM (8 IN) BACKSPLASH, ROUNDED RIM, STAINLESS STEEL LEGS WITH ADJUSTABLE FEET, 89 MM (3 1/2 IN) CUP DRAIN ASSEMBLY SITUATED IN CENTER OF BOWL. PREDRILLED BACKSPLASH HAS SPECIFIED FAUCET.</p> <p>ZURN #Z841B4-XL (QTY-3) WALL MOUNT, TWO HANDLE FAUCET, LOW LEAD, CAST BRASS BODY, LONG SWIVEL INLETS, 102 TO 213 MM (4 TO 8 3/8 IN) CENTER, CERAMIC DISC CARTRIDGES, POLISHED CHROME FINISH, 102 MM (4 IN) VANDAL-RESISTANT COLORCODED METAL WRIST BLADE HANDLES, 137 MM (5 3/8 IN) SWING/RIGID GOOSENECK WITH 8.3 L/MIN. (2.2 USGPM) PRESSURE COMPENSATING AERATOR, INCORPORATED CHECKSTOPS, 13 MM (1/2 IN) NPT FEMALE INLETS.</p> <p>ZURN #Z8702-9BD 38 MM (1 1/2") CAST BRASS ADJUSTABLE P-TRAP, 38 MM (1 1/2 IN) WITH CLEANOUT, DEEP SEAL FLANGE, POLISHED CHROME FINISH.</p>	1-1/2"Ø	1/2"Ø	1/2"Ø	1-1/2"Ø	1-1/4"Ø	EF
4							NOTES
							1. STA
S3	<p>SINGLE BASIN SINK</p> <p>NOVANNI #75SP752814-SH 1915 X 700 MM (75-3/8" X 27-5/8") SINGLE STAINLESS STEEL UTILITY SINK ON LEGS, 304 TYPE, 16 GAUGE, SATIN FINISH, COVED FRONT TO BACK, 203 MM (8 IN) BACKSPLASH, ROUNDED RIM, STAINLESS STEEL LEGS WITH ADJUSTABLE FEET, 89 MM (3 1/2 IN) CUP DRAIN ASSEMBLY SITUATED IN CENTER OF BOWL. PREDRILLED BACKSPLASH HAS SPECIFIED FAUCET.</p> <p>ZURN #Z841B4-XL WALL MOUNT, TWO HANDLE FAUCET, LOW LEAD, CAST BRASS BODY, LONG SWIVEL INLETS, 102 TO 213 MM (4 TO 8 3/8 IN) CENTER, CERAMIC DISC CARTRIDGES, POLISHED CHROME FINISH, 102 MM (4 IN) VANDAL-RESISTANT COLORCODED METAL WRIST BLADE HANDLES, 137 MM (5 3/8 IN) SWING/RIGID GOOSENECK WITH 8.3 L/MIN. (2.2 USGPM) PRESSURE COMPENSATING AERATOR, INCORPORATED CHECKSTOPS, 13 MM (1/2 IN) NPT FEMALE INLETS.</p> <p>ZURN #Z8702-9BD 38 MM (1 1/2") CAST BRASS ADJUSTABLE P-TRAP, 38 MM (1 1/2 IN) WITH CLEANOUT, DEEP SEAL FLANGE, POLISHED CHROME FINISH.</p>	1-1/2"Ø	1/2"Ø	1/2"Ø	1-1/2"Ø	1-1/4"Ø	
4							
FED	<p>FUNNEL FLOOR DRAIN</p> <p>ZURN #ZN415-BF-P CAST IRON FLOOR DRAIN FOR MEMBRANE WITH A 213 MM (8 3/8") IN DIAM., REVERSIBLE CLAMP COLLAR WITH LATERAL OPENINGS ON TOP BODY WITH A 102 MM (4") IN DIAM. THREADED THROAT TO RECEIVE ADJUSTABLE 127 MM (5") IN DIAM.</p>	4"Ø			4"Ø	1-1/2"Ø	UNIT

THIS SKETCH SHALL BE READ IN CONJUNCTION WITH DRAWING M-6 AND ADDM1

 <p>MADONNA ENGINEERING INC. 93 Woodstream Blvd Unit 10 Woodbridge, Ontario L4L 7Y7 Tel: (905) 265 1911 Fax: (905) 265 1998</p>	<p>WESTON FARMING EXPANSION 1610 CHAMPLAIN AVE. WHITBY, ON</p>	DRAWN JH	DATE 2019-04-05	<p>SKETCH No. SKM-ADDM1-M6.1</p>
		SCALE NTS	CHECKED AM	
		REVISED --	PROJECT NUMBER 19-0028	
PLUMBING FIXTURE SCHEDULE				