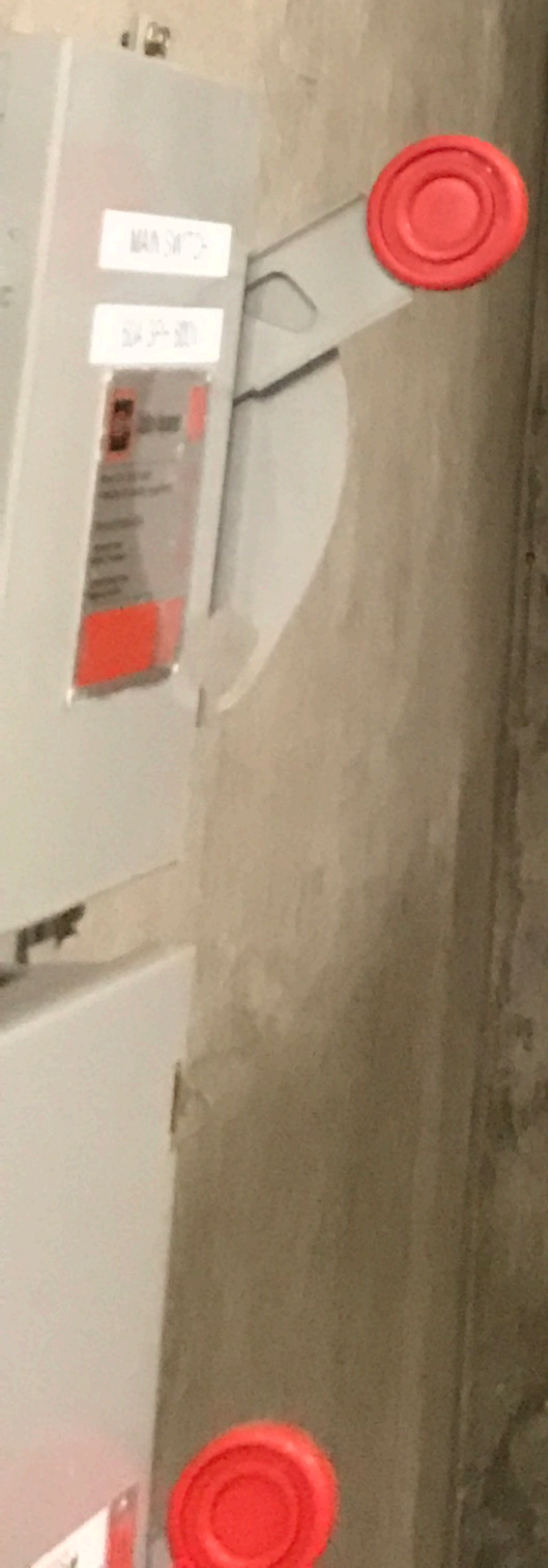
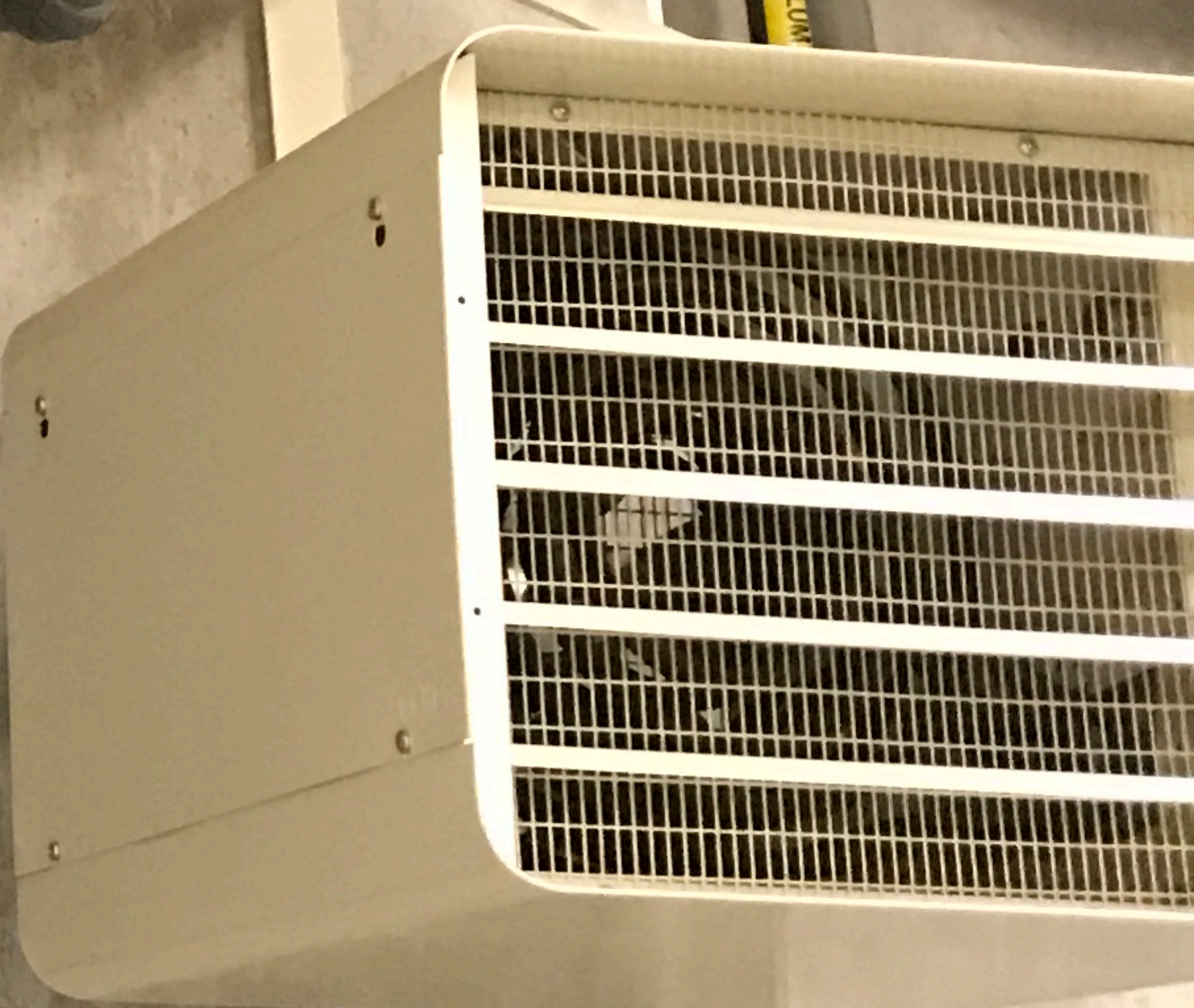
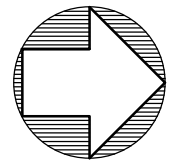


← RETURN ACTIVATED SLUDGE

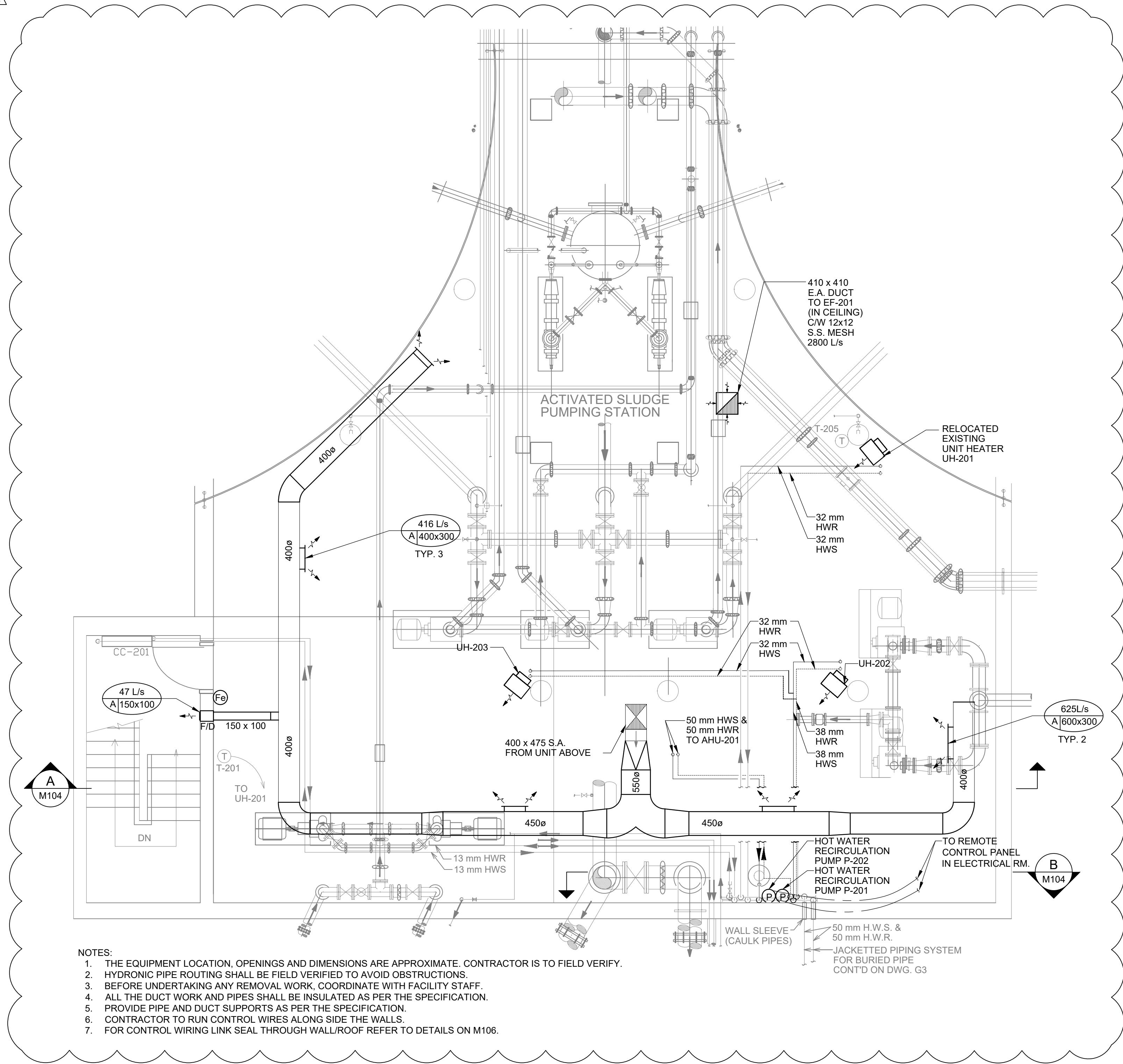
← AERATION TANK DRAIN RETURN







2



- NOTES:
1. THE EQUIPMENT LOCATION, OPENINGS AND DIMENSIONS ARE APPROXIMATE. CONTRACTOR IS TO FIELD VERIFY.
 2. HYDRONIC PIPE ROUTING SHALL BE FIELD VERIFIED TO AVOID OBSTRUCTIONS.
 3. BEFORE UNDERTAKING ANY REMOVAL WORK, COORDINATE WITH FACILITY STAFF.
 4. ALL THE DUCT WORK AND PIPES SHALL BE INSULATED AS PER THE SPECIFICATION.
 5. PROVIDE PIPE AND DUCT SUPPORTS AS PER THE SPECIFICATION.
 6. CONTRACTOR TO RUN CONTROL WIRES ALONG SIDE THE WALLS.
 7. FOR CONTROL WIRING LINK SEAL THROUGH WALL/ROOF REFER TO DETAILS ON M106.

1 PLAN ABOVE EL 233.080



KEY PLAN

CONSULTANT REVISIONS			
NO.	DATE	NAME	REVISIONS

PRIME CONSULTANT

arva

R.V. Anderson Associates Limited
engineering • environment • infrastructure

LICENSED PROFESSIONAL ENGINEER

B. J. MAJANO
100127673

PROVINCE OF ONTARIO

SUB-CONSULTANT

DESIGN BY:	TMT	SCALE:	AS SHOWN
DRAWN BY:	TMT	DATE:	2018-03-13
CHECKED BY:	BJM	CONSULTANT PROJECT NO.:	173766
APPROVED BY:	JDC		

CONTRACT REVISIONS			
NO.	DATE	NAME	REVISIONS

THE REGIONAL MUNICIPALITY
OF DURHAM

WORKS DEPARTMENT
DESIGN, CONSTRUCTION & ASSET MANAGEMENT

LAKE SIMCOE WPCP
AHU REPLACEMENT & DRAINAGE IMPROVEMENTS

MECHANICAL

ACTIVATED SLUDGE PUMPING STATION
HVAC & HYDRONIC - PLANS

PROPERTY NO.	WTP-B-006	BUILDING NO.	WTP-B122-0001
CONTRACT NO.	T-1008-2018	DRAWING NO.	M-103
		SHEET NO.	6 OF 12